

LAKE PEPIN LEGACY ALLIANCE

SAVING A DISAPPEARING LAKE ON THE MISSISSIPPI RIVER

Executive Director Note

ROOTING FOR CLEAN WATER

Pictured above is Kernza, a new perennial grain that can maximize water quality and farm profitability.

Lake Pepin Legacy Alliance (LPLA) is a grassroots organization started by local citizens witnessing the rapid loss of water depth at the head of Lake Pepin. Today, we represent everybody who loves Lake Pepin - in Minnesota, Wisconsin, & across the country - and use science, education, and collaboration with the public, non-profit organizations, and government agencies to improve Lake Pepin's ecosystem and accessibility.

"Rooting" for clean water has been a major focus of the past year and contains a dual meaning. "Plant roots" hold soil in place, alleviate erosive stream flows, and ultimately reduce the amount of sediment accumulating on Lake Pepin's riverbed. Similarly, "community roots" hold people together, strengthen advocacy efforts, and improve local resiliency to a threatened river.

Continuous living cover is a solution that gets at the "root" of the problem. It is based on a simple, but powerful, idea: green lands support blue waters. This year we have been working with partners to make it clear a major shift is needed across our landscape to protect Lake Pepin and the entire Upper Mississippi River.

The Lake Pepin community has ever-deepening roots that include conservationists, outdoor sportsmen, recreational users, business owners, farmers, artists, residents, vacationers, and more. These are the people who know the lake, love the lake, and are mobilizing for its protection. They are also LPLA's most valuable asset. Our community members remind us that we all have something to give, and it is easy to give when Lake Pepin gives so much back.



RYLEE HINCE
Executive Director



STAFF

RYLEE HINCE

Executive Director

ALEX KEILTY

Community Outreach Specialist

EMILY KRUMM

Member Engagement Coordinator

BOARD OF DIRECTORS

ABRA HOVGAARD

President

MISSI BLUE

Vice-President

ARLIN ALBRECHT

Treasurer

MARY ANNE WISE

Secretary

SCOTT JONES

DOUG NIEMELA

SCIENCE COMMITTEE

Missi Blue, Suzanne Blue,
Dr. Dick & Wendy Dart,
Micky Payne, Megan Smith

ROOTING FOR PERENNIAL GRAINS

Continuous living cover (CLC) relies on diversified crops to protect water during shoulder seasons when traditional agriculture leaves land bare and more susceptible to erosion (sending topsoil to Lake Pepin). As research develops commercially viable perennial and winter annual crops, CLC is becoming a scalable solution to our most pressing water quality challenges.

NEW ECONOMIC OPPORTUNITIES FOR GROWERS

With CLC, farmers don't need to stop growing corn and soybeans, but simply incorporate additional crops that can protect water and add profit during the spring and fall.

CLC crops currently available include perennials (alfalfa, clover, switchgrass) and winter annuals (pennycress, camelina). Researchers are also developing new perennial grains, like Kernza, that maximize water quality and farm profitability.



NEW SUSTAINABLE INGREDIENTS TO INDUSTRY

General Mills, Pepsi, and Patagonia Provisions are already using Kernza in products like cereal, bread, and beer. Many local bakeries and breweries are, too.

General Mills is seeking to utilize 18 million pounds of Kernza grain annually by 2025 to reduce their greenhouse gas emissions.

Early-adopter businesses and individual consumers can purchase the flour or grain online by visiting Perennial Pantry at perennial-pantry.com.



CRITICAL ECOSYSTEM SERVICES TO SOCIETY

Kernza is expected to dramatically change agriculture, making croplands multifunctional through the production of both food and ecosystem services.

With perennial soil cover, farmers stand to greatly reduce soil erosion (sending less soil to Lake Pepin), potentially turning agriculture into a soil-forming ecosystem, much like the natural ecosystems it replaced.

Kernza reduces nitrogen and phosphorus leaching into our waters, sequesters more carbon, and minimizes tillage needs and herbicide applications.



RIVER DAYS OF ACTION

The severity of the changes at the head of Lake Pepin are now impossible to ignore. LPLA organized a tour and community demonstration as part of the Mississippi River Network's River Days of Action to ensure decision-makers are part of the conversation and aware of needed solutions.

GUEST SPEAKERS



BRENDA KELLY

Wildlife Biologist
Wisconsin Department of
Natural Resources



COLIN CURETON

Director of Adoption and Scaling
University of Minnesota
Forever Green Initiative

On June 12th, dozens of LPLA's volunteers - wearing reflective vests and carrying tall flags - spread out across the exposed mudflat at the head of Lake Pepin. The goal was to help local, state, and U.S. elected officials visualize the vastness of Lake Pepin's disappearance. Low water levels offered an opportunity to showcase what is often just below the surface.

As these decision-makers drifted downstream in their pontoons, listening to our expert speakers discuss the severity of the threats to our river, connections were formed: connections to the physical reality of an often abstract problem; and connections between individuals with the power to create solutions.

ELECTED OFFICIALS IN ATTENDANCE

U.S. Representative Angie Craig
Staff for U.S. Representative Jim Hagedorn
Wisconsin State Senator Jeff Smith
Minnesota State Representative Barb Haley
Wisconsin State Representative Warren Petryk
Red Wing Mayor Mike Wilson
Bay City Village Board Member Jerry McConnell
Bay City Village Board Member Norm Baker

AND SPECIAL GUEST

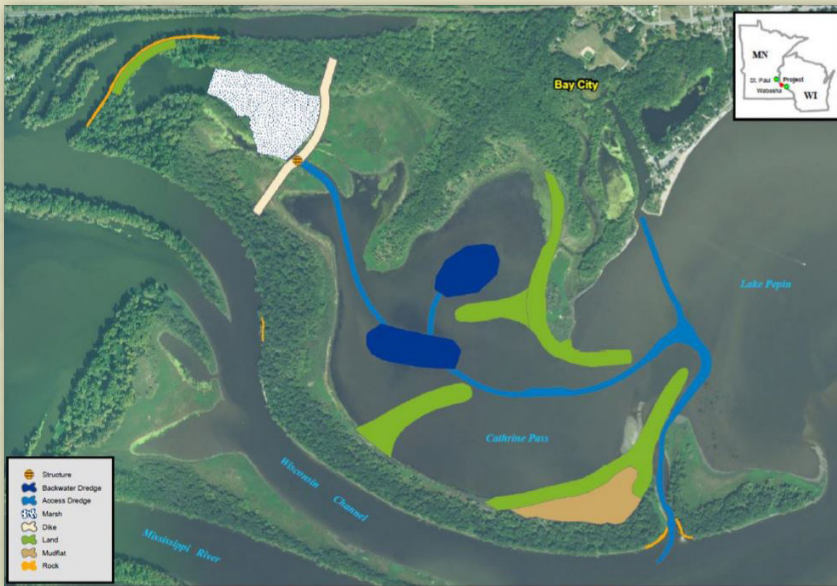
U.S. Army Corps of Engineers Colonel Karl Jansen



RESTORING LAKE PEPIN

Bay City, Wisconsin, has experienced the greatest ecological, social, and economic degradation from the rapidly accumulating sediment at the head of Lake Pepin. Restoring habitat for fish, waterfowl, and other shorebirds, and creating a new boat channel from the harbor to the lake is a huge step forward for this community and the Lake Pepin community as a whole.

PIERCE COUNTY ISLANDS HABITAT RESTORATION



MAIN FEATURES

- 4 Peninsulas
- 2 Backwater Pools
- 3 Areas of Shoreline Protection
- 1 Mudflat
- 1 Water Management Dike
- 1 Marsh
- Access Channels
- ★ Partial Closure

PRIMARY PARTNERS



U.S. Army Corps
of Engineers®



Earlier this year, LPLA successfully advocated the State of Wisconsin to approve a budget including \$3 million dedicated for Lake Pepin's habitat restoration project near Bay City, Wisconsin. This brings our total dollars raised to over \$4 million and is enough to leverage the full \$19 million of federal funding available to improve local conditions. A special thank you to the Wisconsin DNR for framing the initial request, Representative Warren Petryk for working with LPLA to champion the request, Governor Evers for signing the budget, and the many LPLA members and supporters who sent comments to Wisconsin's Joint Finance Committee.

TIMELINE TOWARD PROJECT COMPLETION

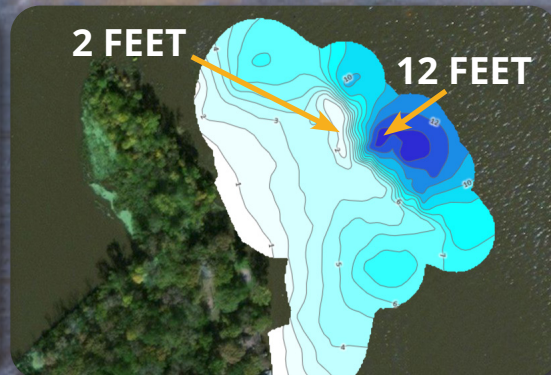
2023	Start Aquatic Construction
2022	Start Terrestrial Construction
2021	Wisconsin Approves \$3,000,000 Project Design & Engineering
2020	Feasibility Report Finalized
2019	Minnesota Approves \$750,000
2018	Local Municipalities Pledge \$117,500
2017	Wisconsin DNR Formalizes Partnership
2016	Corps of Engineers Selects Lake Pepin Project
2015	LPLA Requests Feasibility Study
2014	LPLA Drafts Problem Appraisal Report



100%

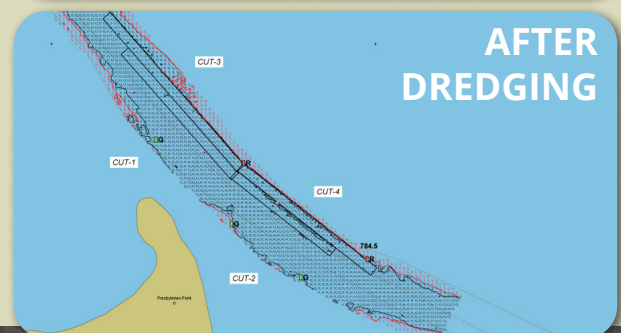
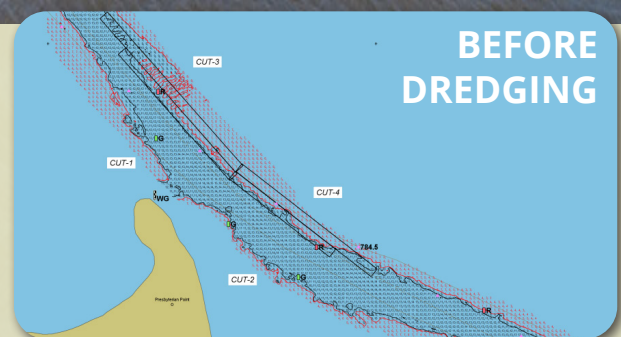
A NARROWING CHANNEL

Between Presbyterian and Freidrich Point [River Mile 784 - 785], the navigation channel is just half its authorized width. The U.S. Army Corps of Engineers has consistently notified commercial vessels to use extreme caution in this reach of the river. The amount of material needing to be dredged is double the total amount ever previously dredged in this location.



The most deceiving part of the river here is the dramatic change in depth between the maintained navigation channel and everything outside of it. As part of an ongoing effort to track the bottom depth conditions in Lake Pepin, and sediment movement over time, LPLA used a mapping technology to help warn recreational boaters of this hazard.

This summer's low water, combined with a narrowing channel, led to almost predictable boat groundings whenever a boater hugged the buoys to pass another vessel. Since last year's low water had similar safety concerns for boaters, LPLA has been actively advocating the Corps of Engineers and our U.S. legislators for improved channel conditions. In September, we saw some results when the Corps of Engineers dredged 26,000 cubic yards of material from this reach. While the channel is not yet at its fully authorized width, boat groundings are no longer a regular occurrence.



CHARTING AHEAD

LPLA is moving forward with a focus on local partnerships and broader collaboration along the Mississippi River. It is the people who use, love, and depend on Lake Pepin who are most equipped to speak on its behalf. LPLA is here to amplify your voice and ensure you have a seat at the table when it comes to decisions that affect not just Lake Pepin, but the entire Mississippi River.

"Lake Pepin is a critical resource and vital component of the Mississippi River system. It is a globally important bird area within the Mississippi River flyway and a go-to destination for fishing and sailing. These are just some of the reasons why LPLA receives support from across the nation and why we are working to ensure Lake Pepin's protection is a local, regional, and national priority."

*Rylee Hince,
LPLA Executive Director*



2022 EVENTS

1

Water conservation: in agriculture and industry, and at home

How we use groundwater in Minnesota (average year)

2

Green infrastructure: managing runoff in cities and towns

What we need

3

Farming practices that protect water: slowing down the flow

4

Living cover: filtering and reducing runoff

What is living cover?

WE ARE WATER EXHIBIT (LAKE CITY) APRIL 28-JUNE 20

SUMMER SOLSTICE KERNZA FESTIVAL (LAKE CITY) JUNE 18

LEGACY CONCERT (LIBERTY TREE FARM, STOCKHOLM) JULY 23

ANNUAL MEMBER MEETING (TBD) SEPTEMBER

LPLA MEMBERSHIPS AVAILABLE AT THE FOLLOWING LOCATIONS:

Broken Paddle Guiding Co. | Iris & Oak
Stockholm Pie and General Store | Indigo Swan



GIVING A BRIGHTER FUTURE TO LAKE PEPIN



WWW.LAKEPEPINLEGACYALLIANCE.ORG



\$10,000 MATCH

Give by cash, check, or credit by mail or online. All gifts will be matched dollar per dollar now through the end of the year by the Albrecht-Poss Family Foundation.



WORKPLACE MATCH

Check to see if your workplace matches employee donations.



DIRECT GIFT

Give by cash, check, or credit by mail or online anytime. All gifts \$50+ include a free shirt!

**COMING
SOON!**

2022
T-Shirt
Design

VOLUNTEER, ENGAGE, & TELL A FRIEND!

Do you love Lake Pepin? Spend a lot of time on the water? Enjoy taking pictures? Want to learn more about the issues? If you answered yes to any of these questions, we encourage you to engage with us online, tell your friends, and consider joining our team of volunteers next year!



Email: info@lakepepinlegacyalliance.org to discuss:



**LEGACY
GIVING**



**CHARITABLE
IRA ROLLOVERS**



**STOCK
DONATIONS**

Mail this form with contribution to: LPLA, P.O. Box 392, Red Wing, MN 55066

Full Name(s):

Mailing Address (Street, City, State, Zip)

Email

Phone

FREE 2022 MEMBER T-SHIRT WITH ANY \$50+ GIFT

● S ● M ● L ● XL

Contribution: \$

● Cash ● Check ● Credit Card

Credit Card Number

Exp. Date

CVC #

Signature