

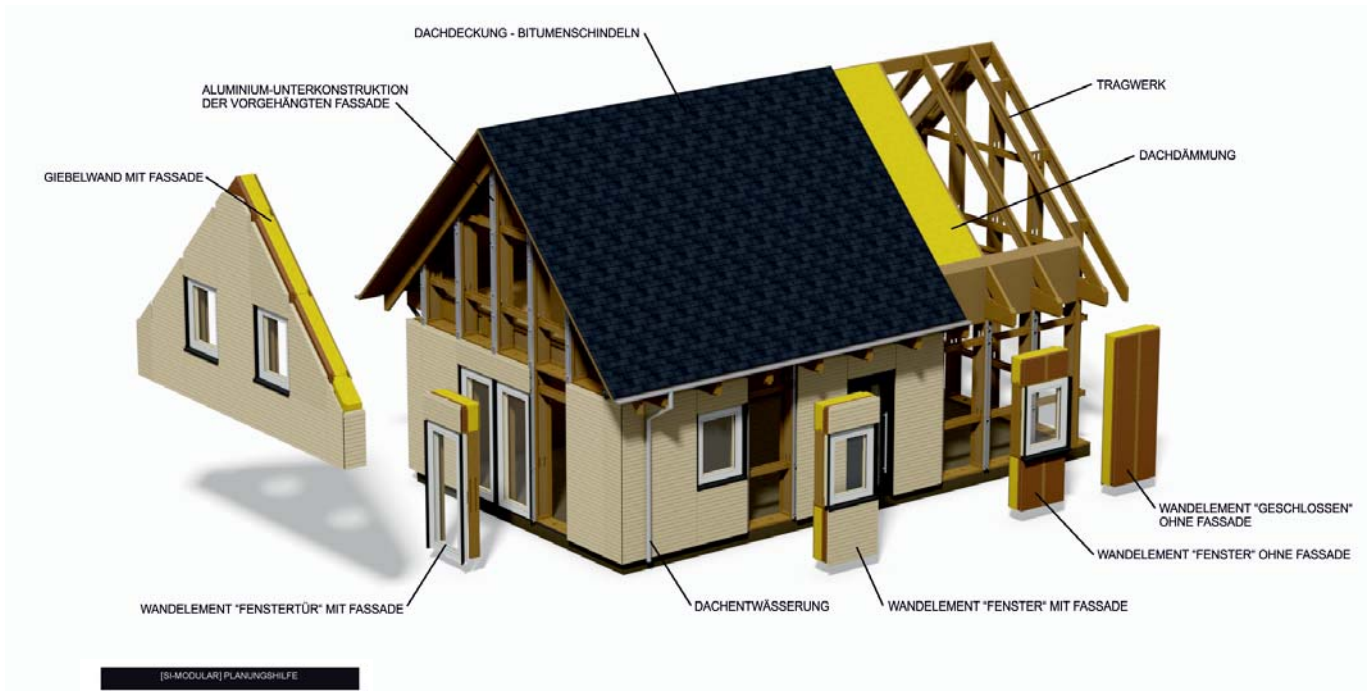


PRICELIST TYPE A

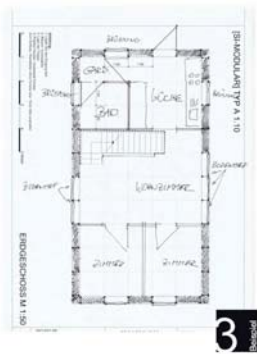
[SI-MODULAR][®]

Introduction

This price list makes it possible to easily calculate the costs for your individual [SI-MODULAR] house. On the following pages you will find prices and information on the individual categories. As a basis for cost calculation, we recommend our planning aids. These can be found on our homepage www.si-modular.net in the section "Planning".



[SI-MODULAR] PLANUNGSHILFE



With the help of your own planning, you can now simply count the required components or additional axes and calculate them. You only need to enter the required quantity into the corresponding field and multiply it by the appropriate unit price. At the end of each page you calculate the total of the each category.

Example:

UNIT PRICE
100,00 €

 x

QUANTITY
4

 =

TOTAL PRICE
400,00 €

For a better overview, we have prepared a small table on the last page of this price list, in which you can compile the previously calculated prices of the individual categories. Here you also calculate the total sum by adding up the respective amounts.

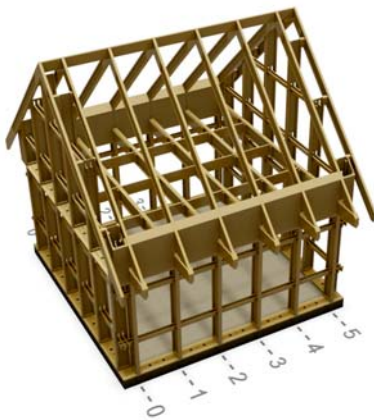
We wish you good luck and if you have any questions, of course we are at your disposal.

Your STELLINNOVATION GmbH Team

[SI-MODULAR] PREISLISTE TYP A	
Zusammenfassung	
<small>Für eine bessere Übersicht übertragen Sie nach die Geometrie der jeweiligen Kategorie in die dafür vorgesehenen Felder. Anschließend beschreiben Sie den Gesamtpreis.</small>	
 01 - Tragwerk	<input type="text"/>
 02 - Außenwand	<input type="text"/>
 03 - Fenst.	<input type="text"/>
GESAMT: <input type="text"/>	
<small>Wir würden uns freuen, wenn Ihnen unser System zusagt. Sollten Sie noch offene Fragen haben, besuchen Sie unsere Homepage unter www.si-modular.net oder schreiben uns eine Email. Unsere Kontaktdaten finden Sie auf der folgenden Seite.</small>	
<small> [SI] STELLINNOVATION GMBH T. +49 (0)2506-300 62 51 F. +49 (0)2506-300 62 52 </small>	

01 - Structure frame

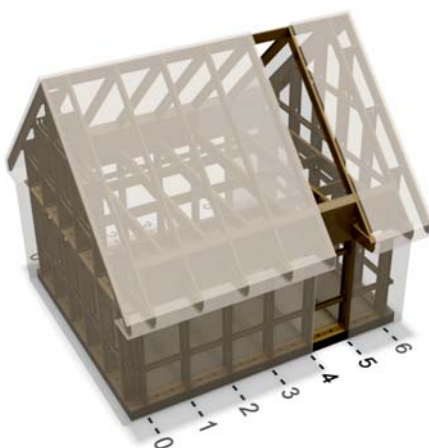
The structure frame builds the basic system of the modular component construction. It includes all necessary components, e.g. pillars, sill plates, floor girders and rafters, which are required for the assembly. The individual components are made of Kerto laminated veneer lumber and FJI beams (double-webbed beams). Due to their special construction, the FJI beams are specifically material-saving but still very load-bearing. They can additionally reduce the heat bridges with the small cross-section and have a lower energy consumption.



The basic kit of structure frame type A1.5 consists of pillars, floor girder and rafters made of FJI-beams, as well as sill plates and frames made of laminated veneer lumber, onesided paneling for the inserted ceiling and roof with 25 mm ESB-panels. Incl. all necessary materials for the assembly and the fastener on the base plate produced by the customer. A type structural analysis for the construction application and a detailed assembly instruction are included in the price.

UNIT PRICE
18.000,00 €

TOTAL PRICE
= 18.000,00 €



Additional axle for the basic kit of TYPE A1.5 described before. Incl. all construction parts and materials to extend the structural frame for 1,00 m.

UNIT PRICE
1.800,00 €

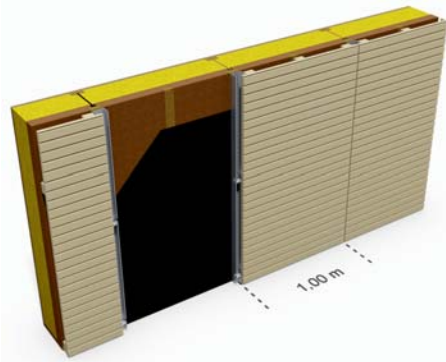
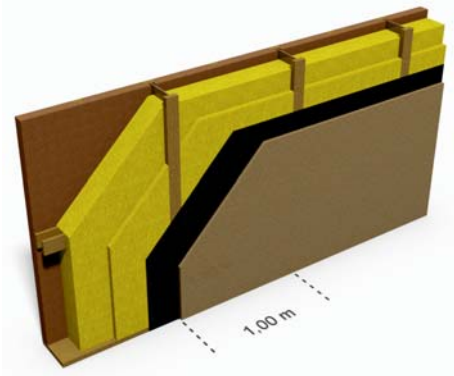
x QUANTITY

= TOTAL PRICE

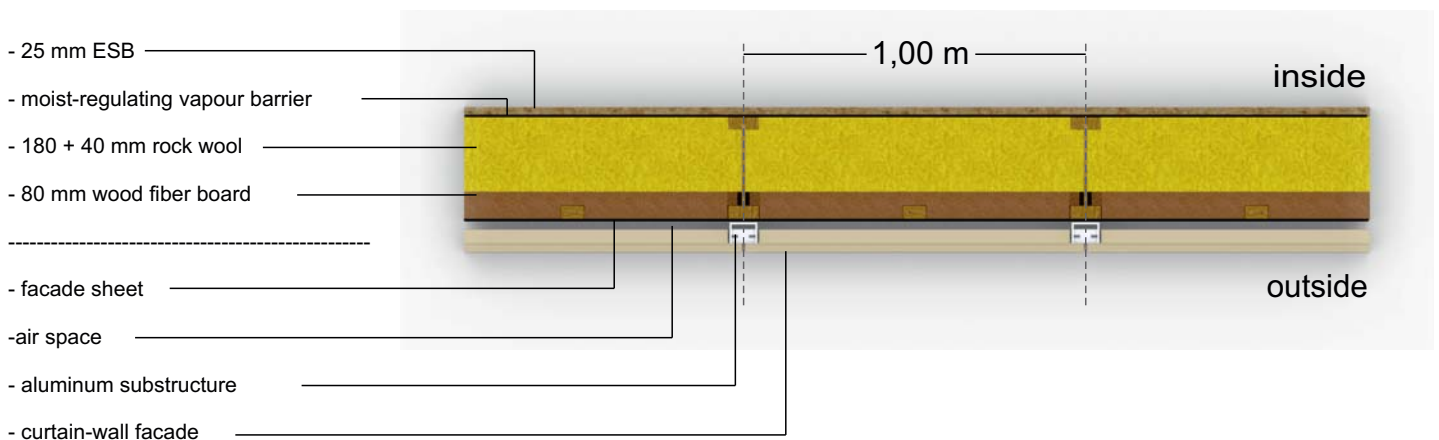
01.1 - STRUCTURAL FRAME TOTAL:

02 - Exterior wall (with and without facade)

The SI-MODULAR[®] structural frame system makes it possible to use the complete wall cross-section of 30 cm for the thermal insulation of the building. Our wall system also provides all necessary components to create a heat-insulated exterior wall quickly and easily. A 25 mm thick ESB panel constitutes the inside paneling, which braces the building at the same time. A moist-regulating vapour barrier contributes to a balanced room climate. The double-ply stone wool with a thickness of 220 mm forms the main part of the thermal insulation. The outer finishing consists of an 80 mm thick insulation panel made of wood fiber board. This board is matched exactly to the system and is placed in three parts from the inside between the pillars. Now you can create the house for example with plaster or clinker brick.

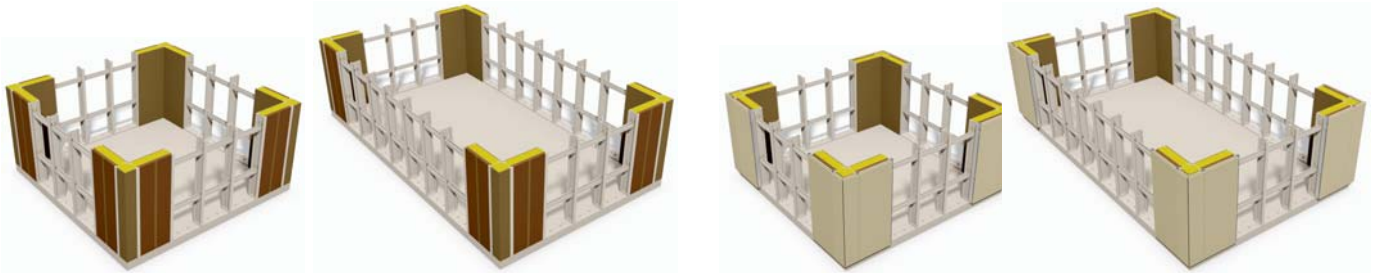


you can also access our modular facade system for a clip assembly. And that's how it works: After installing the thermal insulation, a wind- and water-repellent facade-sheet will be applied on the outside and an aluminum substructure will be screwed onto each pillars. On this substructure the finished mounted facade elements can be hung and aligned. The facade elements are optionally available with a surface of double rhombus profiles or with high-resistance colored HPL panels.

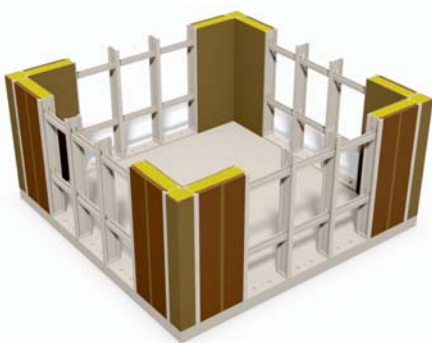


02.1 - Corners

Since it is a modular system, which must be constructed according to a same type statics, the modular component system is subject to some defined conditions. To ensure the stability the corner panels of each building must be closed (i.e., no windows or doors). In order to simplify the planning process, we have compiled a basic kit with the required 8 wall elements as well as 4 corner elements. Here you also have the choice between the insulated exterior wall or the wall including the facade.



No matter how many axes you choose, the corner elements always remain the same.



A basic kit for a heat insulated exterior wall consists of 8 wall elements, as well as 4 corner elements.

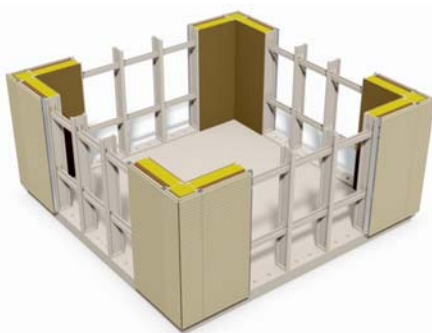
Without facade

UNIT PRICE

2.400,00 €

TOTAL PRICE

=



A basic kit for a heat insulated exterior wall **incl. curtain-wall facade** consists of 8 wall elements, as well as 4 corner elements.

With spruce facade

UNIT PRICE

10.160,00 €

TOTAL PRICE

=

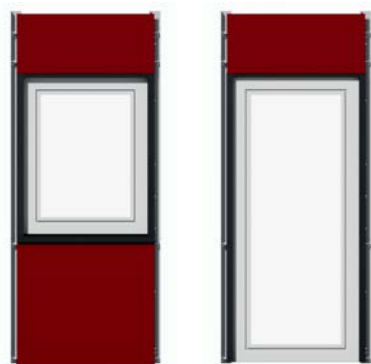
+

=

02.1 CORNERS TOTAL:

02.2 - Wall elements

In addition to the selected basic kit, you can fill the empty wall field with different elements. In addition to the closed wall elements, you can choose from two different window formats. The windows are made of high quality pinewood with aluminum covering on the outside guaranteeing a permanent protection from weather influences. Thanks to the triple glazing, the wood-aluminum windows offer a UW-value of 0.93W / m²K. This value highly exceeds the current requirements of the Energy Saving Regulation. Here you also have the choice between the heat-insulated exterior wall or the wall with curtain-wall facade.



Graphic with HPL-Facade



Graphic with Double-Rhombus-Facade

Depending on the window size, the facade elements are delivered in the appropriate sizes to ensure a uniform joint design.

Sizes:

Window: 901 x 1142 mm
Window door: 901 x 2066 mm



Because of the wide color palettes, the facade made of HPL panels (High Pressure Laminate) offers huge amount of design possibilities. The 10 mm thick material impresses with its high weather resistance and furthermore is scratch-proof, resistant to impacts and easy to clean. The panels are invisibly attached to the individual frame elements by undercut anchors.



The rhombus profiles with groove and tongue is made of technically dried whole wood from nordic spruce. With this profile you get a horizontally closed facade facing in rhombus optics. Before the assembly the wooden profiles are treated with a surface treatment to ensure long weather protection.

02.2 - Wall elements



Wall elements "closed" as closed element. Optionally with or without facade.

	UNIT PRICE		QUANTITY		TOTAL PRICE
Without facade	300,00 €	x		=	

	UNIT PRICE		QUANTITY		TOTAL PRICE
With spruce facade	950,00 €	x		=	



Wall element "Window" with a window element. Optionally with or without facade.

	UNIT PRICE		QUANTITY		TOTAL PRICE
Without facade	960,00 €	x		=	

	UNIT PRICE		QUANTITY		TOTAL PRICE
With spruce facade	1.375,00 €	x		=	

	UNIT PRICE		QUANTITY		TOTAL PRICE
Aluminum window surround	180,00 €	x		=	

+



Wall element "Window-door" with a window-door. Optionally with or without facade.

	UNIT PRICE		QUANTITY		TOTAL PRICE
Without facade	1.300,00 €	x		=	

	UNIT PRICE		QUANTITY		TOTAL PRICE
With spruce facade	1.550,00 €	x		=	

	UNIT PRICE		QUANTITY		TOTAL PRICE
Aluminum window surround	220,00 €	x		=	

+

=

02.2 WALL ELEMENTS TOTAL:

02.3 - Gable wall



Gable wall for the type A without window. Optionally with or without facade.

	UNIT PRICE		QUANTITY		TOTAL PRICE
Without facade	1.350,00 €	x		=	



	UNIT PRICE		QUANTITY		TOTAL PRICE
With spruce facade	5.070,00 €	x		=	

+



Gable wall for the type A with 1 window. The position of the window is variable. Optionally with or without facade.

	UNIT PRICE		QUANTITY		TOTAL PRICE
Without facade	2.110,00 €	x		=	



	UNIT PRICE		QUANTITY		TOTAL PRICE
With spruce facade	5.540,00 €	x		=	

	UNIT PRICE		QUANTITY		TOTAL PRICE
Aluminum window surround	180,00 €	x		=	

+



Gable wall for the type A with 2 windows. The positions of the windows are variable. Optionally with or without facade.

	UNIT PRICE		QUANTITY		TOTAL PRICE
Without facade	2.870,00 €	x		=	



	UNIT PRICE		QUANTITY		TOTAL PRICE
With spruce facade	6.020,00 €	x		=	

	UNIT PRICE		QUANTITY		TOTAL PRICE
Aluminum window surround 2 pcs.	360,00 €	x		=	

+



Gable wall for the type A with 3 windows. Optionally with or without facade.

	UNIT PRICE		QUANTITY		TOTAL PRICE
Without facade	3.630,00 €	x		=	



	UNIT PRICE		QUANTITY		TOTAL PRICE
With spruce facade	6.490,00 €	x		=	

	UNIT PRICE		QUANTITY		TOTAL PRICE
Aluminum window surround 3 pcs.	540,00 €	x		=	

=

02.3 GABLE WALL TOTAL:

03 - Roof

03.1 - Roof insulation



The roof insulation consists of rock wool for multilayer installation between the roof beams, as well as a humidity-regulating vapour barrier.

	UNIT PRICE		TOTAL PRICE
Basic kit	1600,00 €	=	

	UNIT PRICE	x	QUANTITY	TOTAL PRICE
Additional axle	350,00 €			

=

03.1 ROOF INSULATION TOTAL:

03.2 - Roof dewatering



The roof gutter package consisting of: a half round gutter made of steel, 2 fall pipes and bends, channel connectors, as well as all necessary materials for the assembly.

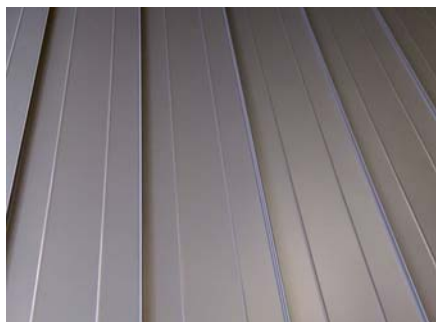
	UNIT PRICE		TOTAL PRICE
Basic kit	600,00 €	=	

	UNIT PRICE	x	QUANTITY	TOTAL PRICE
Additional axle	80,00 €			

=

03.2 ROOF DEWATERING TOTAL:

03.3 - Dachdeckung



Roof covering made of the DS Stahl - standing seam. Deck width 475 mm, incl. all necessary materials for the assembly.

	UNIT PRICE		TOTAL PRICE
Basic kit	7.300,00 €	=	

	UNIT PRICE		QUANTITY		TOTAL PRICE
Additional axle	730,00 €	x		=	



Roof covering made of high-quality bitumen shingles incl. all necessary materials for the assembly.

	UNIT PRICE		TOTAL PRICE
Basic kit	1.300,00 €	=	

	UNIT PRICE		QUANTITY		TOTAL PRICE
Additional axle	230,00 €	x		=	

Verfügbare Farben:

Anthrazit

Grün

Rot



03.3 Roof covering TOTAL:

Summary

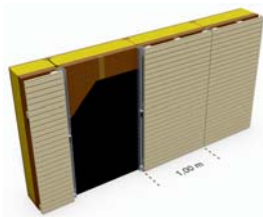
For a better overview, now you can compile the total prices of the individual categories into the provided fields and calculate afterwards the total price.



01 - Structural frame

01.1 Structural frame

+



02 - Exterior wall

02.1 Corners

02.2 Filling elements

02.3 Gable elements

+



03 - Roof

03.1 Roof insulation

03.2 Roof dewatering

03.3 Roof covering

=

TOTAL:

incl. VAT

We would be pleased if you liked our system. If you would like to have an offer or if you still have any questions, please visit our website at www.si-modular.net or write an e-mail. Our contact data can be found on the following page.

CONTACT:

STELLINNOVATION GmbH

Twenhövenweg 2
48167 Münster

T. +49 (0)2506-300 62 51

F. +49 (0)2506-300 62 52

M. info@stellinnovation.de

W. www.si-modular.net

Managing director:
Dipl.-Ing. Hans-Ludwig Stell

HRB 13875
Amtsgericht Münster
Steuer Nr.: 336/5725/4201



[SI-MODULAR][®]

Twenhövenweg 2
48167 Münster

Geschäftsführer:
Dipl.-Ing. Hans-Ludwig Stell

M. info@stellinnovation.de
W. www.stellinnovation.de

T. +49 (0)2506-300 62 51
F. +49 (0)2506-300 62 52

[SI]

STELLINNOVATION_{GMBH}

