

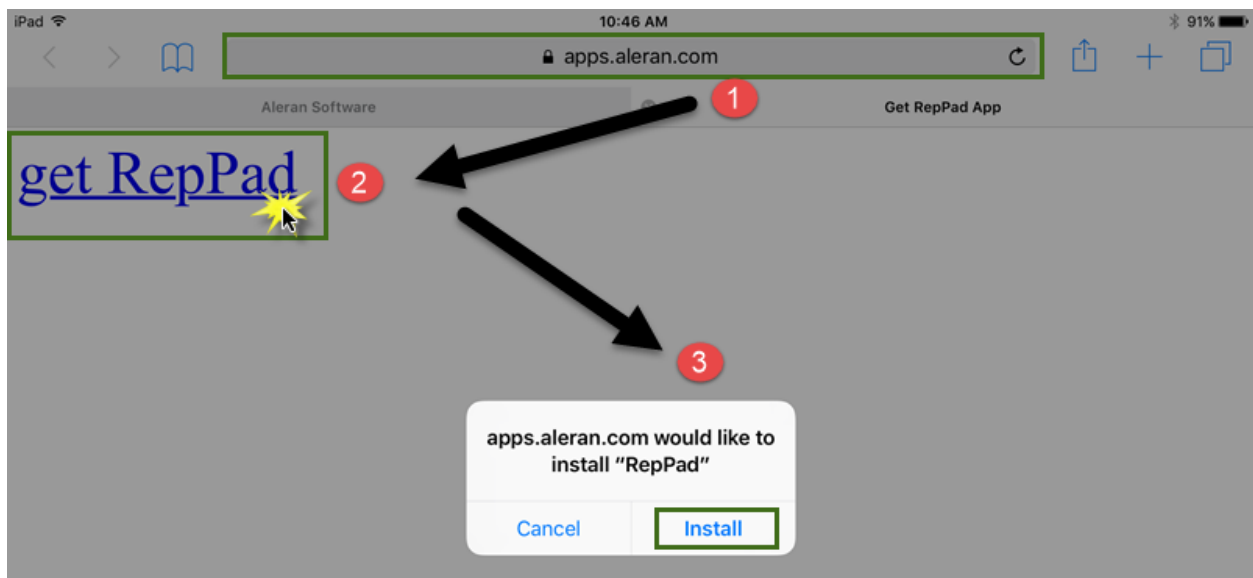
# Aleran RepPad

## How to download RepPad

Go to [www.aleran.com](http://www.aleran.com) > click **Download** (or) click on the direct link below.

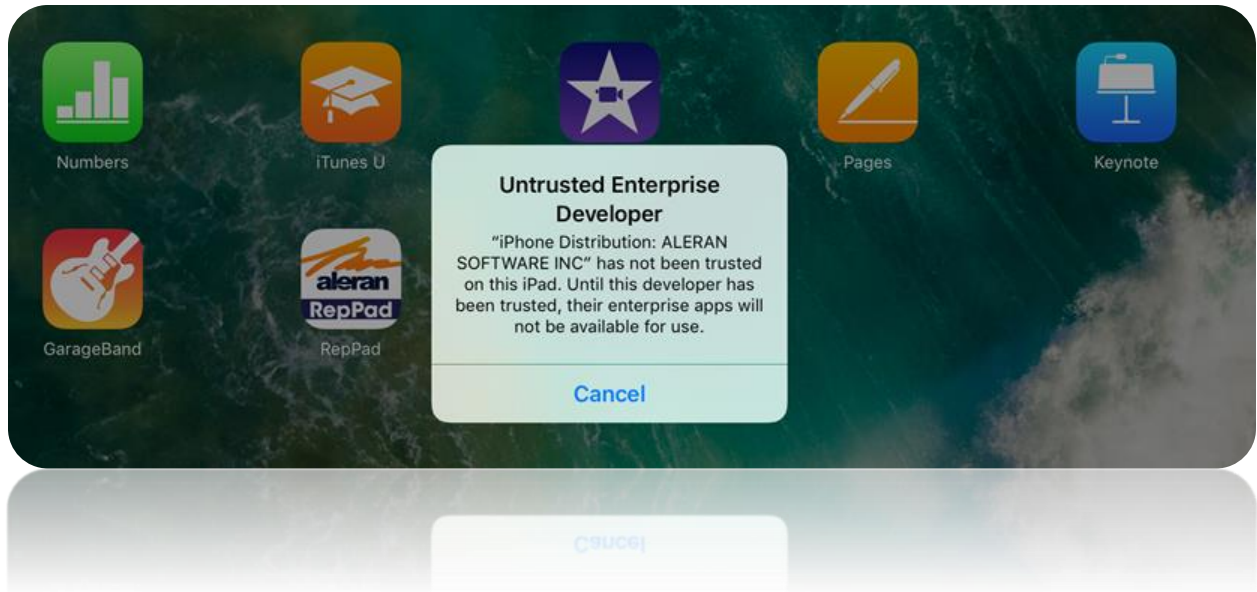
<http://apps.aleran.com/ipadapp/>

Click on **“Get RepPad”** then tap on **Install**.



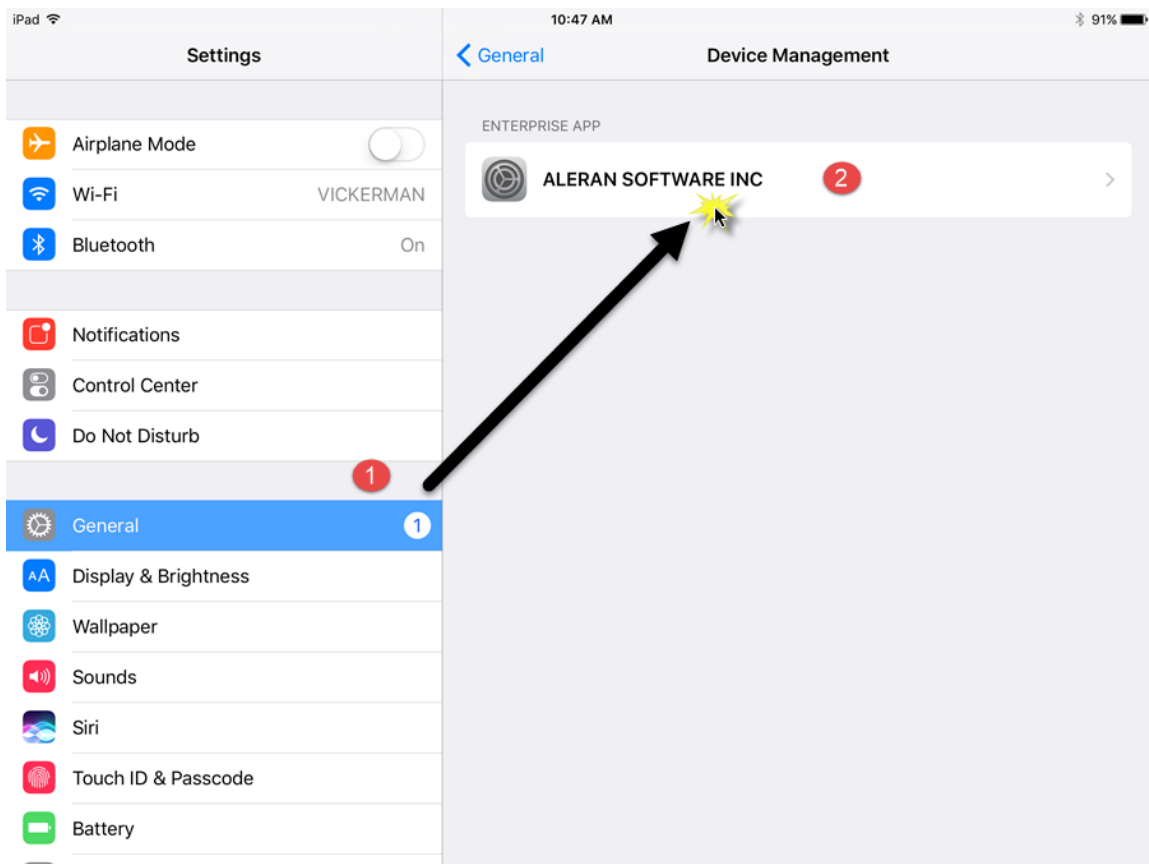
*\*The download will start downloading in the background\**

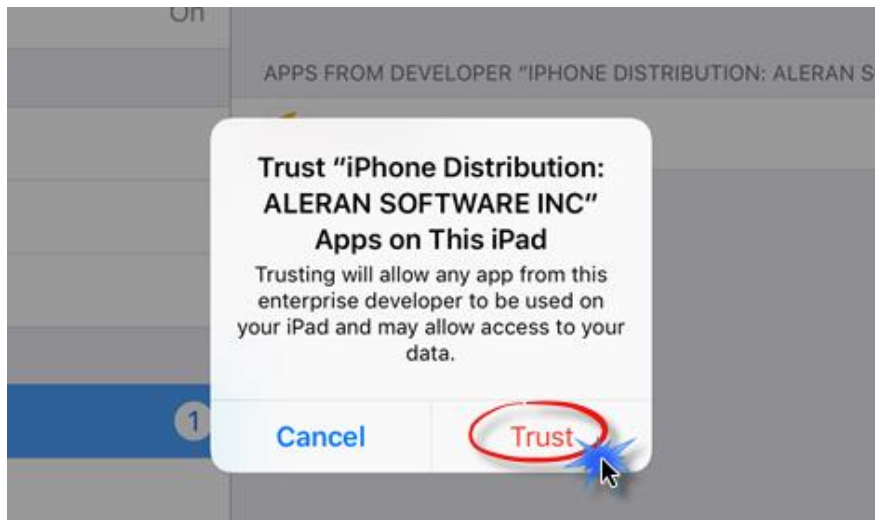
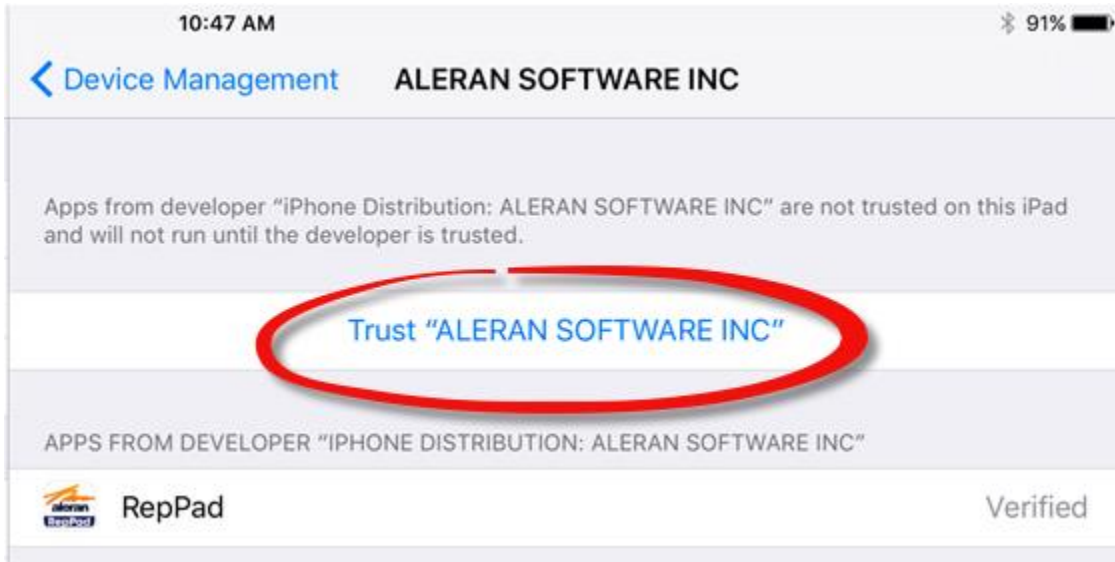




### Untrusted Enterprise Developer:

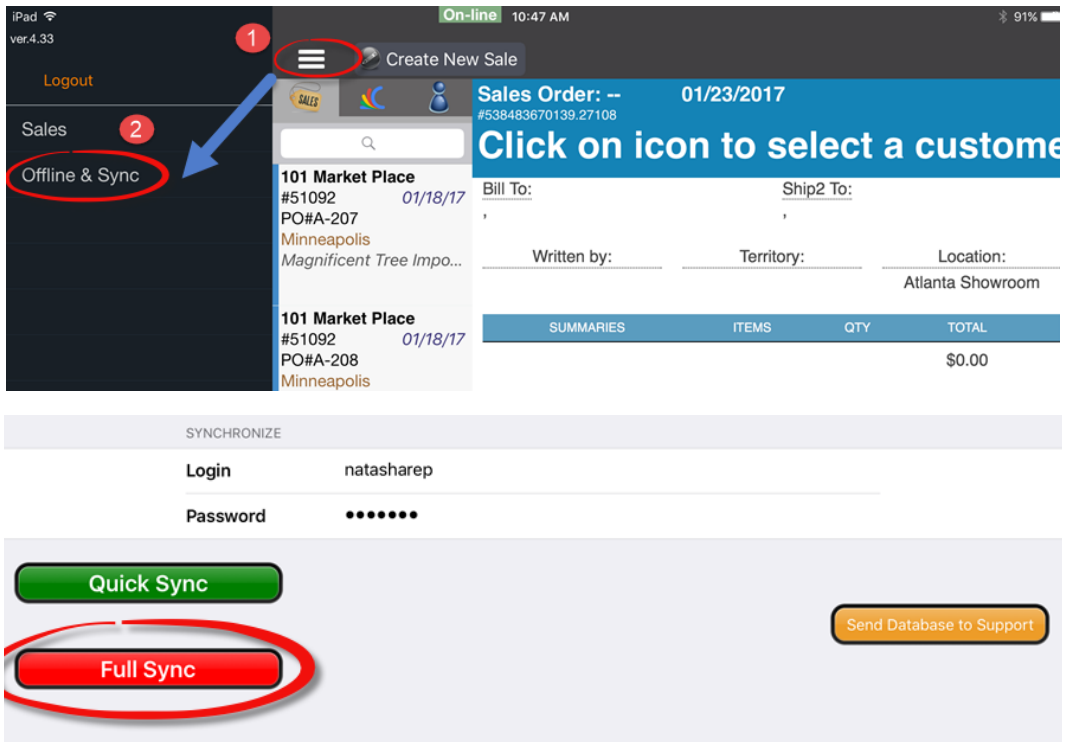
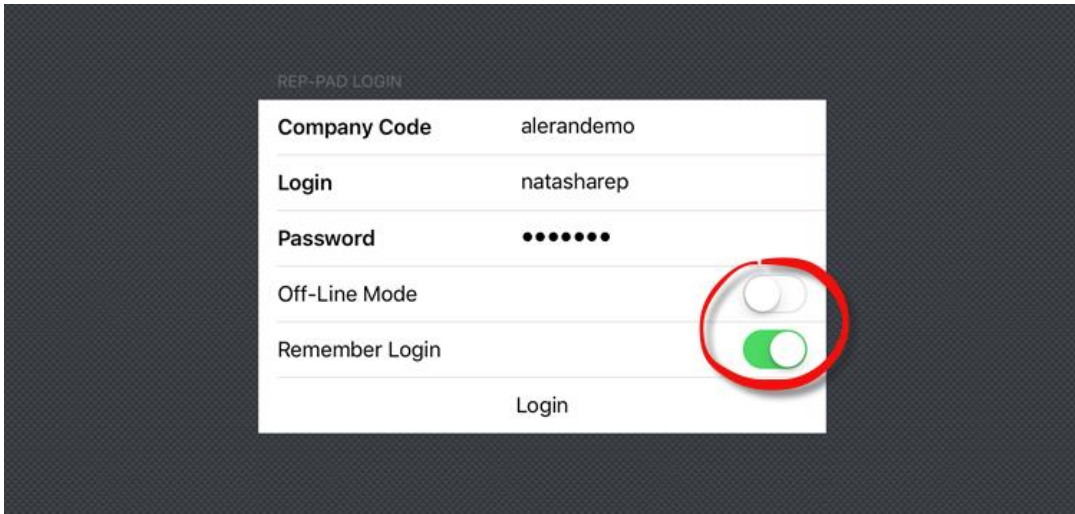
1. Go to iPad settings.
2. Tap on **General**.
3. Scroll down to **Device Management**.
4. Trust "Aleran Software Inc."





The first time logging into Aleran Software you must login in **Online Mode**.

- Login **Online Mode**.
- Tap the 3-line icon.
- Tap **Offline and Sync**.
- In the **Last Refresh** you will see off-line database is not available. *Indicates that no information has been pushed to the RepPad.*
  - Double check **Synchronize** is filled with your login information.
    - Click **Full Sync**.
  - Now you can re-login in **Offline Mode**.



***\*It is very important that you hit "ok" and then tap on done.\****

