

HOW IT WORKS

Enlist the strong support of the senior pastor and make the survey a top priority for your church.



Complete the survey order form, submit payment, and choose your survey start date.

Email a unique link to your congregation to provide access to the survey.



Sign up for "The Latest from REVEAL" webinar. This will prepare you for receiving reports and understanding the data behind the survey.

Promote it often prior to launch and while it's live.

During announcements, demo how to take the survey.

TIPS

Recruit volunteers to provide on-site weekend support.

Encourage participation by leveraging social media.



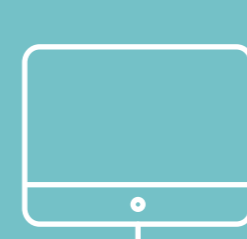
Receive regular updates on the number of surveys completed.

TWO WAYS YOUR CONGREGANTS CAN TAKE THE SURVEY:



Mobile App

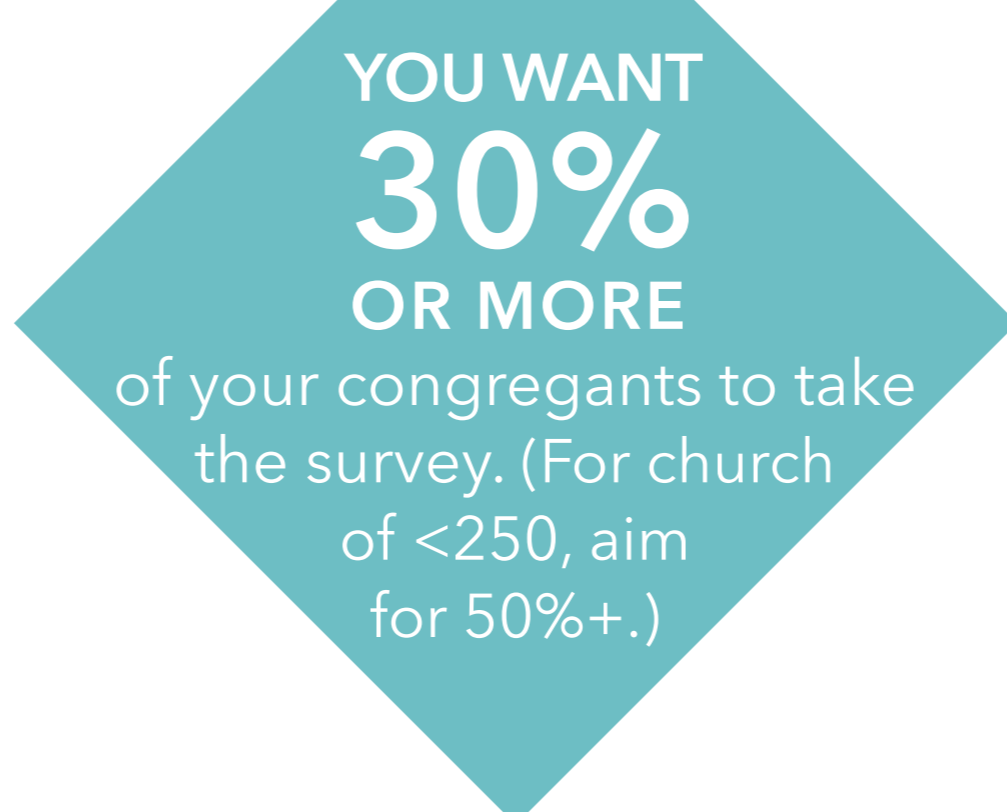
Accessing the link on their smartphone will prompt them to download the REVEAL-Spiritual Formation app. An email, username, and password are required.



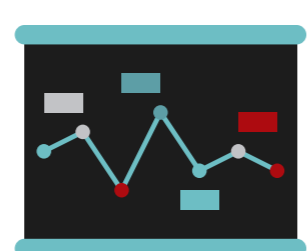
Computer

Access the link on a desktop or laptop, an email, username, and password is required. We recommend using chrome for this.

Know that a high response rate will yield survey results that reflect the voice of your entire congregation.



Monitor response rates while the survey is live and, if necessary, provide additional reminders.



RECEIVE REPORTS

Receive your reports the day after your close date.

Discover results that reflect the voice of your entire congregation, ultimately helping you and your church map out a journey toward spiritual transformation.

UNDERSTAND YOUR DATA

We offer a one-hour consultation call with Cally Parkinson & Nancy Scammacca Lews, where they focus on helping you understand your reports

GET COACHED

We partner with Navigators Coaching & Ascending Leaders Coaching.

BEGIN TAKING YOUR NEXT STEPS.

RETURN TO REVEAL TWO YEARS LATER

Feilding the survey every two years will allow you to gauge your churches spiritual growth longitudinally.