

# Hosting a Live Facebook Event

---

# Planning your Event

---

- ❖ **Why:** What is the goal?
- ❖ **Who:** MC / Tech & Speakers
- ❖ **Where:** Home? Office?
- ❖ **When:** Date / Time
- ❖ **What:** Content

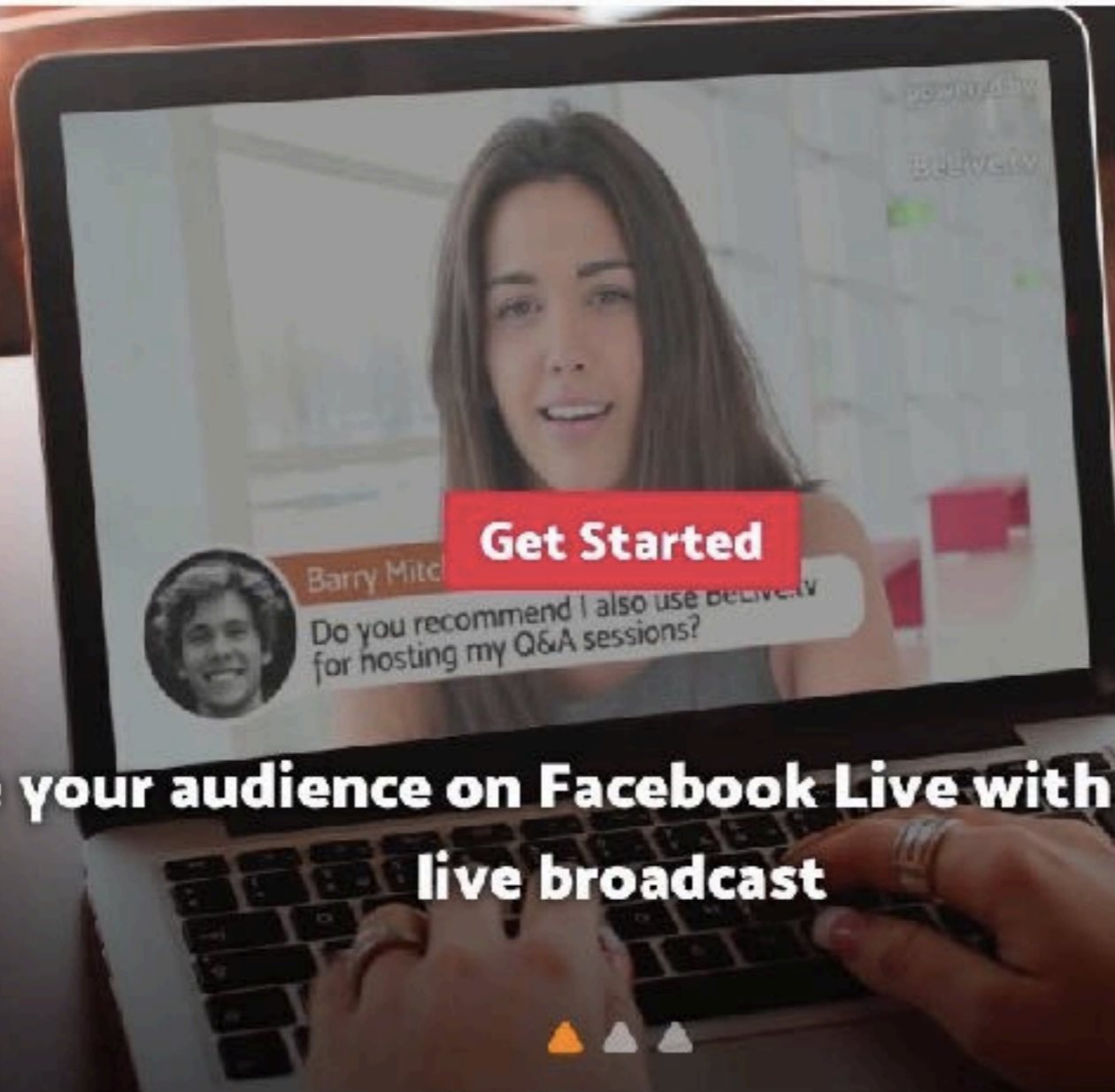


Welcome

Features

Case Studies

Log In



**Engage your audience on Facebook Live with an amazing live broadcast**

---

---

belive.tv

# Why BeLive?

---

- ❖ Facebook!
- ❖ Can have remote guests in broadcast
- ❖ Records broadcast and posts to your page
- ❖ Can download video for other uses
- ❖ Cool ways to interact with viewer comments

# Tech Stuff

---

- ❖ Must have admin control of agency Facebook page
- ❖ High speed internet, several laptops
- ❖ Belive is in beta
- ❖ Chrome only
- ❖ Free, for now...
- ❖ Test only option

# Types of Broadcasts

---

- ❖ QA
- ❖ Interview
- ❖ Talk Show

## Start your first Broadcast ✕

Choose broadcasting mode


Solo  Interview

Text to Share with the Broadcast

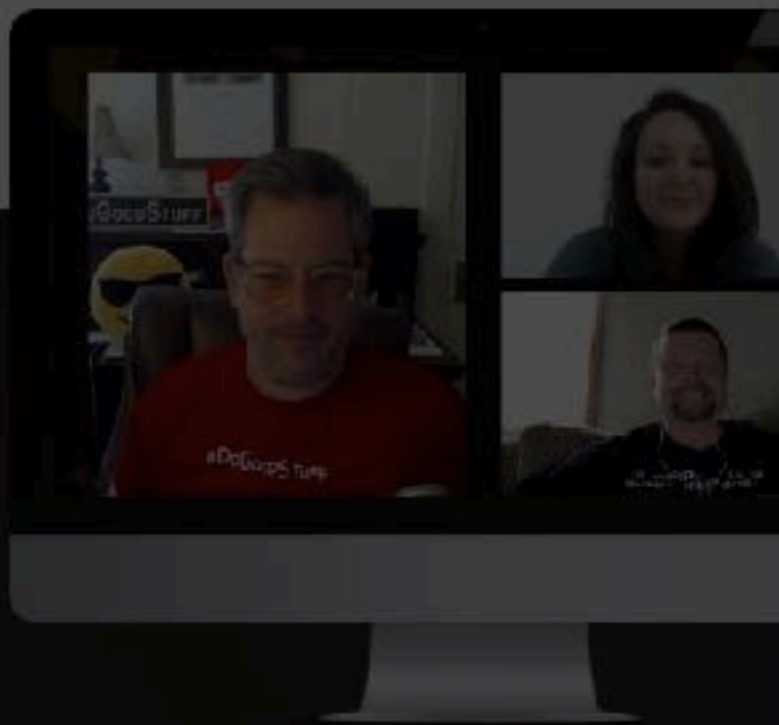
Your Email

Create a scheduled Facebook Live broadcast

Broadcast through Facebook Live

 [Connect with Facebook](#)

Engage your audience on Facebook Live with an amazing live broadcast



## Create Show Broadcast ✕

Text to Share with the Broadcast

Your Email

Broadcast Title (will not be shared) (required)


**Create a scheduled Facebook Live broadcast**

Choose where you want to post this live broadcast

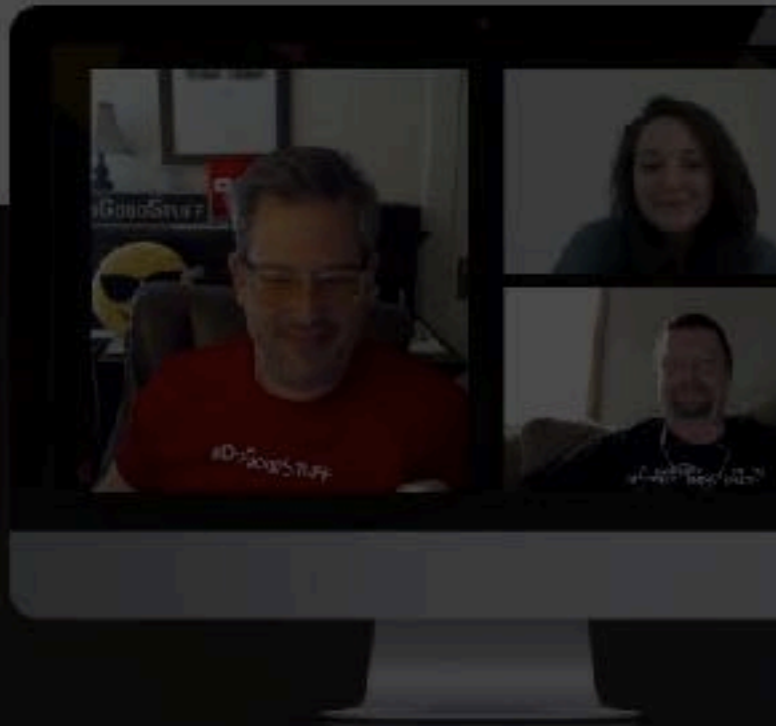
On your own timeline ▾

Receive broadcast details on Messenger

Send to  Messenger

 Amber Hodson [Not you?](#)





## Create Show Broadcast ✕

Text to Share with the Broadcast

Your Email

On your own timeline

On a page you manage

On a group you manage

On an event

Testing Only - Do not post

On your own timeline ▼

Receive broadcast details on  
Messenger

Send to  Messenger

 Amber Hodeon [Not you?](#)

**BeLive Team**

Inbox - AOL 9:54 AM

Your BeLive "Deaf Action Demo" Broadcast (#13)

To: Amber Hodson MSW, CI/CT

Thanks for creating a Talk Show broadcast with BeLive!

Your broadcast is available at [https://belive.tv/broadcasts/deaf-action-demo/show\\_host](https://belive.tv/broadcasts/deaf-action-demo/show_host)

Check out [the tutorials playlist on our page](#) if you have any questions.

We are here to help and answer any further questions you may have, just hit reply!

Have a great broadcast!

--



The BeLive Team

+ Create a Q&A Broadcast

+ Create a Face to Face Interview Broadcast

+ Create a Talk Show Broadcast

# Amber Hodson's Broadcasts

Title	Facebook Post	Image	Start Time	Broadcast Link (inactive until LIVE)	Broadcast
Face to Face			April 29, 2017 14:19	<a href="https://facebook.com/DeafHope/videos/545680172111622/">https://facebook.com/DeafHope/videos/545680172111622/</a>	<a href="#">Face to Face Page</a> delete
					

## Broadcast Section

Bring a guest into the broadcast from the lobby below

Bring a guest into the lobby b

## Lobby Section



Add a photo from albu

Connect Camera

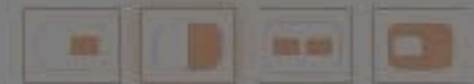
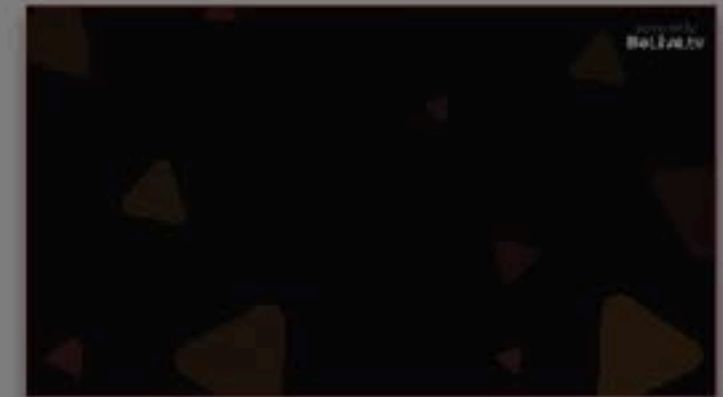


broadcast

3. Click "**Start Broadcasting**" in the sidebar to start the broadcast on Facebook Live
4. When you have more than one video in the broadcast, you can switch between different **layouts** using the selectors under the live video preview
5. Audience comments will show up in the sidebar. Click "Show" to **highlight a** comment, your viewers will appreciate it!
6. Greet your VCD viewers! Many of your viewers will watch the **recording** of your broadcast later, so use the beginning of the broadcast to introduce yourself and the topic of the broadcast.
7. Use the **Agenda** feature to prepare talking points and save On-Screen Updates
8. Have fun!

Start

## Live Broadcast Preview



START BROADCAST

This broadcast is set to "Testing Only". When you have a Facebook destination set, the button above lets you start your broadcast.

Agenda

Write On-Screen Updates

Show

## Live Comments



BeLive.tv production studio: Comments from the Facebook Live post appear on BeLive!

Show

09:55

Add Guests

Copy Link

Broadcast Section

Bring a guest into the broadcast from the lobby below

Bring a guest into the broadcast from the lobby below

Bring a guest into the broadcast from the lobby below

Lobby Section



Connect Camera

Add a photo from your Facebook albums

 Add

Add Guests

Copy Link

Live Broadcast Preview



START BROADCAST

This broadcast is set to "Testing Only". When you have a Facebook destination set, the button above lets you start your broadcast.

Agenda

Write On-Screen Updates

Show

Live Comments



BeLive.tv production studio: Comments from the Facebook live post appear on BeLive!

Show

09:55

Right side is control panel, not seen by viewers

Connect camera

Share link with guests

Change window panels on right side

Broadcast Section

Bring a guest into the broadcast from the lobby below

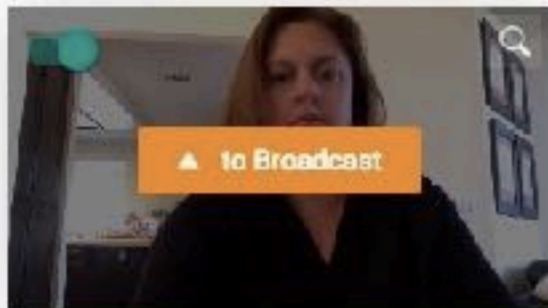
Bring a guest into the broadcast from the lobby below

Bring a guest into the broadcast from the lobby below

Lobby Section

1 guest is available  
(Only you can see the lobby)

Amber Hodson



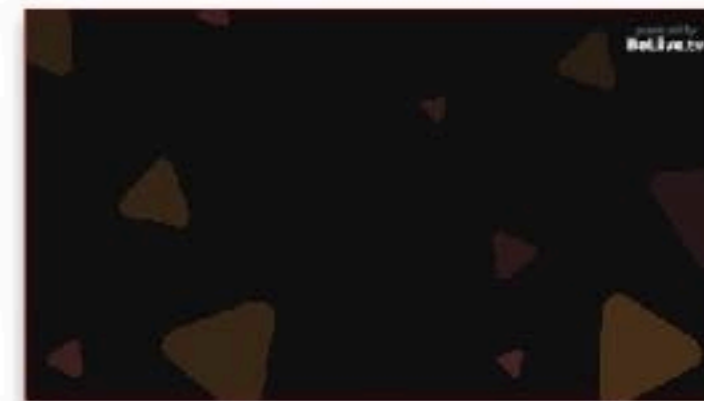
Add a photo from your Facebook albums



Add Guests

Copied to clipboard

Live Broadcast Preview



START BROADCAST

This broadcast is set to "Testing Only". When you have a Facebook destination set, the button above lets you start your broadcast.

Agenda

Write On-Screen Updates

Show

Live Comments



BeLive.tv production studio: Comments from the Facebook live post appear on BeLive!

Show

09:55

move video feed into to broadcast

Broadcast Section

Bring a guest into the broadcast from the lobby below

Bring a guest into the broadcast from the lobby below



Lobby Section

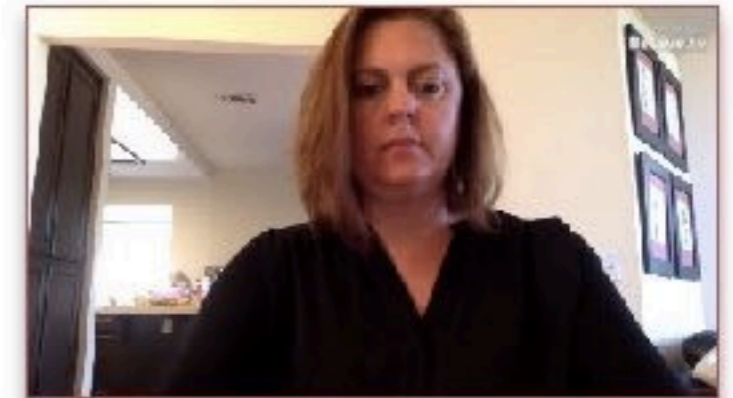
Add a photo from your Facebook albums



Add Guests

Copied to clipboard!

Live Broadcast Preview



START BROADCAST

This broadcast is set to 'Testing Only'. When you have a Facebook destination set, the button above lets you start your broadcast.

Agenda

Write On-Screen Updates

Show

Live Comments



BeLive.tv production studio: Comments from the Facebook live post appear on BeLive!

Show

09:55

use red arrow below video to remove from broadcast

Broadcast Section

Bring a guest into the broadcast from the lobby below

Bring a guest into the broadcast from the lobby below



Amber Hodson Show

  SCLC

Lobby Section

Add a photo from your Facebook albums

 Add

Add Guests

Copied to clipboard!

Live Broadcast Preview



Hello world!



START BROADCAST

This broadcast is set to "Testing Only". When you have a Facebook destination set, the button above lets you start your broadcast.

Agency Hello world! Hide

Live Comments

 BeLive.tv production studio: Comments from the Facebook live post appear on BeLive!

Show 09:56

type in text to appear at bottom of screen



Broadcast Section

Bring a guest into the broadcast from the lobby below

Bring a guest into the broadcast from the lobby below



Lobby Section

Add a photo from your Facebook albums  


Add Guests

Copied to clipboard!

Live Broadcast Preview



START BROADCAST

This broadcast is set to "Testing Only". When you have a Facebook destination set, the button above lets you start your broadcast.

Agenda

Write On-Screen Updates

Show

Live Comments

Hide Current Comment



BeLive.tv production studio: Comments from the Facebook live post appear on BeLive!

Hide

09:55

choose which viewer comment to appear on feed

# How'd we do?

---

- ❖ Fundraiser or Educational
- ❖ Reach: over 47,000
- ❖ Views: over 7,000
- ❖ What is the difference?

# What worked?

---

- ❖ Special guests
- ❖ Panel Discussions
- ❖ Games
- ❖ HUGE reach compared to usual events
- ❖ Content we can re-use for many purposes
- ❖ Managing comments on several laptops

# Challenges

---

- ❖ Server was overloaded!
- ❖ End Broadcast button - ack!
- ❖ Deaf-Blind access?
- ❖ Background / Setting
- ❖ 30 minutes per speaker

# After the Live Event

---

- ❖ Download
- ❖ Edit: cut, add links, more info
- ❖ Add descriptions / captions
- ❖ Youtube

Questions?

---