



2015

Regional Economic Growth Report

Presenting Sponsor:



birmingham
businessalliance
THE CHAMBER FOR REGIONAL PROSPERITY

REGIONAL ACCOLADES

Forbes



BIRMINGHAM IS AMERICA'S MOST AFFORDABLE CITY IN 2015

- Forbes, March 2015

BIRMINGHAM RANKED ONE OF THE BEST CITIES TO FIND A STARTUP JOB



 ZipRecruiter



Greater
Birmingham
is the **20th**
Best Metro Area for
STEM Professionals

HIGHLANDS BAR AND GRILL NAMED BEST RESTAURANT IN ALABAMA



 BUSINESS INSIDER



BIRMINGHAM IN TOP 10 CITIES WITH THE FRIENDLIEST LOCAL BUSINESSES



The World Games
Birmingham 2021

BIRMINGHAM TO HOST

2021 WORLD GAMES





birmingham
businessalliance
THE CHAMBER FOR REGIONAL PROSPERITY

www.birminghambusinessalliance.com

TABLE OF CONTENTS

A Message from the BBA.....	4
Blueprint Birmingham Metrics.....	5
Milestones & Accomplishments	6
Innovation & Technology.....	8
2014 New and Expanding Industry Map.....	10
2014 New and Expanding Industry List	12
2014 New and Expanding Industry Profiles.....	15
Data Appendix	29
BBA Executive Committee	36
BBA Board of Directors.....	37
BBA Staff.....	38

A MESSAGE FROM THE BIRMINGHAM BUSINESS ALLIANCE

The Birmingham Business Alliance is proud to present this 2015 Regional Economic Growth Report, which highlights the Birmingham region's economic growth and achievements during the past year. Here you will find the important metrics by which we measure our community's progress, accolades and accomplishments relative to the BBA's strategic growth plan, Blueprint Birmingham, and the official 2014 new and expanding industry report for the region.

Last year 3,011 new jobs and more than \$370 million in capital investment were announced in the Birmingham metropolitan area. It was a year of solid growth for our region. Most of the growth came from existing companies that utilized the resources available to them and took advantage of Birmingham's excellent transportation infrastructure, low cost of doing business, exceptional collaboration and support, superior workforce, and a strong technology and innovation ecosystem.

The 79 projects from new and expanding companies last year included the biotechnology, information technology, corporate, research and development, communications, manufacturing, transportation, mining, and distribution and logistics sectors, which collectively represent the diversity of the Birmingham regional economy.

The metrics section of this report includes supporting data for 15 performance categories, with Birmingham compared to 11 other metropolitan areas, Alabama and the U.S. Compared with the other metropolitan areas, Birmingham showed improvement in seven of the performance categories, while four were unchanged and four declined. Recently Forbes magazine ranked Birmingham America's "Most Affordable City," and Birmingham continues to have one of the best combinations of personal income and cost of living in the south.

Congratulations to the businesses, communities and employees that were part of a successful 2014 in economic development. The BBA also thanks our investors, community and state leaders and economic development partners who work with us to facilitate an effective economic development process for the Birmingham region.



Brian Hilson
President and CEO

Mark Crosswhite
Chairman of the Board
Chairman, President and CEO,
Alabama Power Co.

2014

**JOBS
ANNOUNCED**

3,011

**CAPITAL
INVESTMENT**

\$ 370,062,600

The Blueprint Birmingham Metrics table reveals metropolitan Birmingham’s status among 11 peer metropolitan statistical areas for rank base years 2001 to 2010 and 2010 to 2014 in key economic indicators, ranked by percentage change. The economic indicators are grouped in three categories: Economic Prosperity, Education and Workforce, and Community and Regional Stewardship. Metropolitan Birmingham’s rankings improved in seven of the 15 economic indicators. Four economic indicators show a decline; while four remained unchanged.

Birmingham’s Peer Metropolitan Areas:

- Atlanta, GA
- Mobile, AL
- Austin, TX
- Montgomery, AL
- Charlotte, NC
- Nashville, TN
- Huntsville, AL
- Oklahoma City, OK
- Louisville, KY
- Raleigh, NC
- Memphis, TN

Blueprint Birmingham Category	Rank Base year-2010	Rank 2010-2014	Status
Economic Prosperity			
Annual Average Labor Force	12	9	Improved
Real Gross Domestic Product	11	5	Improved
Annual Average Employment	12	8	Improved
Per Capita Personal Income	5	6 (tie)	Declined
Construction Investment	6	6	Unchanged
National Institutes of Health (NIH), Awards by Metropolitan Area	9	9	Unchanged
National Science Foundation Total Research and Development Expenditures, Awards by Metropolitan Area	8	9	Declined
Merchandise Export Totals by Metropolitan Area	1	8	Declined
Education and Workforce			
Population Age 25 or Older with Bachelor’s Degree	12	6	Improved
Population Age 25 or Older with Associate’s Degree	4	10	Declined
Population Age 25 or Older with High School Diploma	12	8 (tie)	Improved
Community and Regional Stewardship			
Population Estimate	11	9 (tie)	Improved
Cost of Living Annual Average Composite Index*	4 (2010)	4 (2014)	Unchanged
At-Risk-Youth, Population 16 to 19 Years Old That are Not a High School Graduate, are Not in Labor Force, are Unemployed	8	4	Improved
Violent Crime Rate per 100,000 Inhabitants	9	9	Unchanged

* The principal city is used for metropolitan areas with more than one composite index.

(Sources and Complete Appendix on pages 29-35)

The work of the Birmingham Business Alliance to grow jobs and capital investment and effectively market the region to the world is guided by a strategic plan that focuses on economic, community, regional and workforce development, as well as public and private leadership. The accomplishments, accolades and demographics on

the following pages are a snapshot of the progress made in the Birmingham region in 2014, which, along with the BBA's strategic plan, help unify the region to realize its full potential and strengthen its status as an economic leader in the Southeast.



Birmingham Accolades

Birmingham one of **“Top 10 Best Downtowns of 2014”** – *Livability.com*

Birmingham one of **Top 10 Hottest Housing Markets for 2014** – *CNNMoney*

Birmingham is America’s **Most Affordable City in 2015** – *Forbes*

Birmingham is America’s **Best City for 2014** – *Movoto*

Birmingham **No. 2** in the nation in **millennial homebuyer growth** – *Builder magazine*

Birmingham one of America’s **Best Cities for Global Trade** – *Global Trade magazine*

Birmingham in **Top 10 of ‘new industrial boomtowns’** – *Forbes*



STERIS Corp. chooses Birmingham for global HQ for specialty services, IMS



Oxford Pharmaceuticals to build \$29.4 million facility in Birmingham

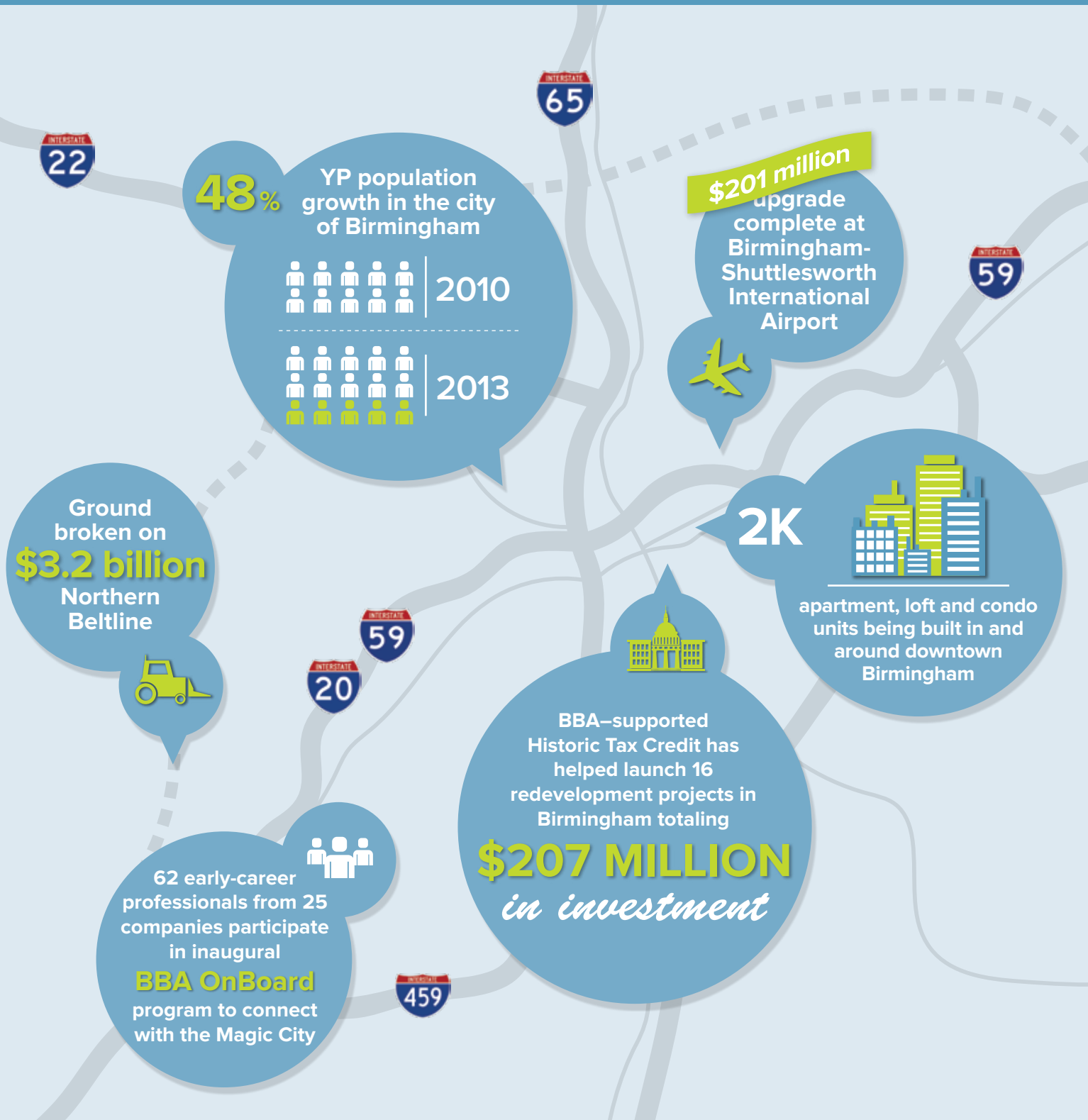


Evonik selects Birmingham for new R&D center



AIDT opens first Birmingham training center to focus on construction, manufacturing

MILESTONES & ACCOMPLISHMENTS



Additional Accomplishments

6 winners



1,000+ entrepreneurs and small business employees engaged in BBA minority- and small-business programming

\$40K GRANT awarded to BBA to further educational attainment in the region

Birmingham's thriving innovation and technology ecosystem touches every industry in our region. Here are some accomplishments and national attention our ecosystem received in 2014.

2014 BIRMINGHAM INNOVATION WEEK



2,112 PARTICIPANTS



77 SPEAKERS

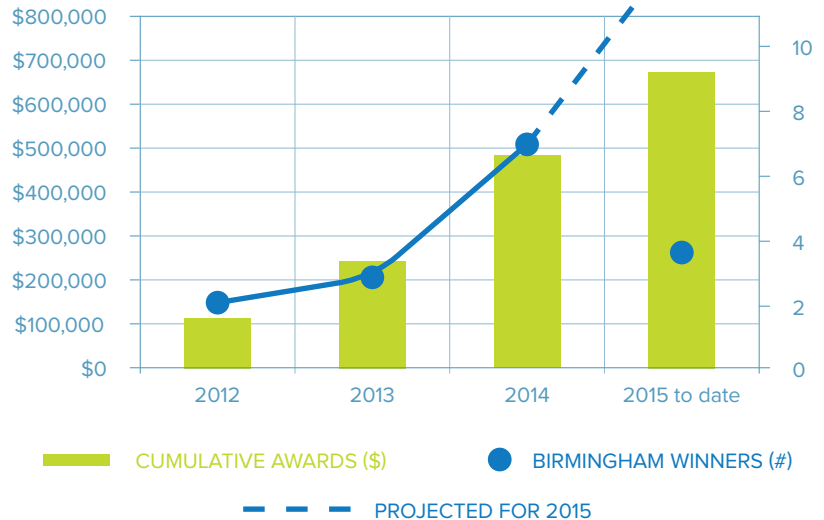
\$163,386 IN CASH AWARDS



1,812 PAGE VIEWS



BBA SPARK Coaching for ALABAMA Launchpad® Startup Competition



INNOVATION PARTNERSHIPS

Funding	Academia	Industry	Results
 \$650,000 Federal grants	 Knowledge that will change your world Nano-diamond Vascular grafts	 THE CHAMPION FOR REGIONAL PROSPERITY VISTA ENGINEERING Almax-easyLab SCIENCE UNDER STRESS ONYX Optics Inc VIVO BIOSCIENCES Bama Mine & Milling	Nano-diamond coated drill bits Microfabrication facility

Birmingham Accolades

Birmingham is one of the “Best Cities to Find a Startup Job” –ZipRecruiter

Birmingham ranks “No. 20 for best Metro Area for STEM Professionals” –WalletHub

Alabama ranks “8th for biopharma job creation” (led by Birmingham) –Site Selection magazine, March 2014

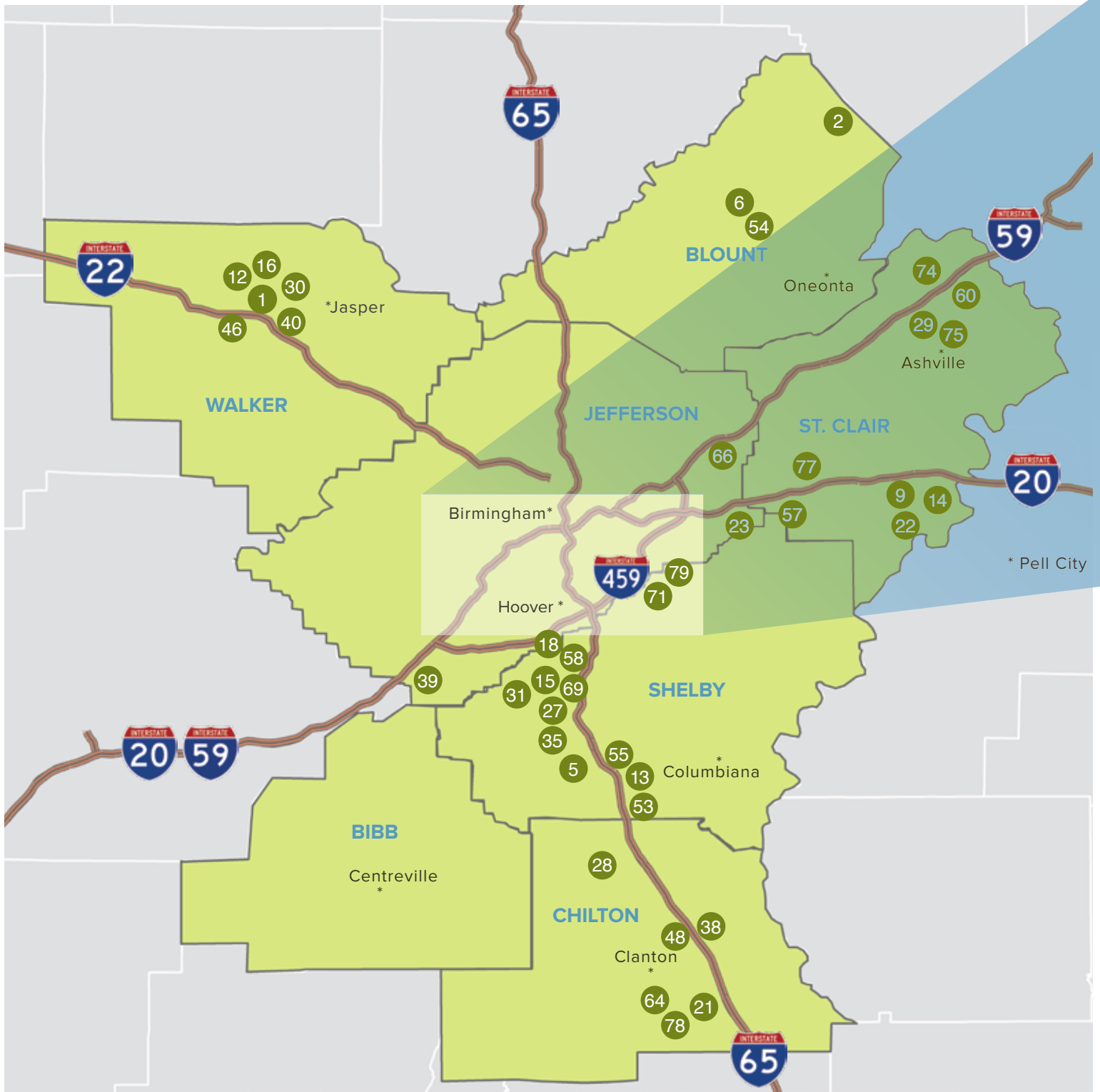
NEW AND NOTABLE IN 2014

Technology and innovation companies that turned heads and made headlines in 2014.

Bama Mine & Milling

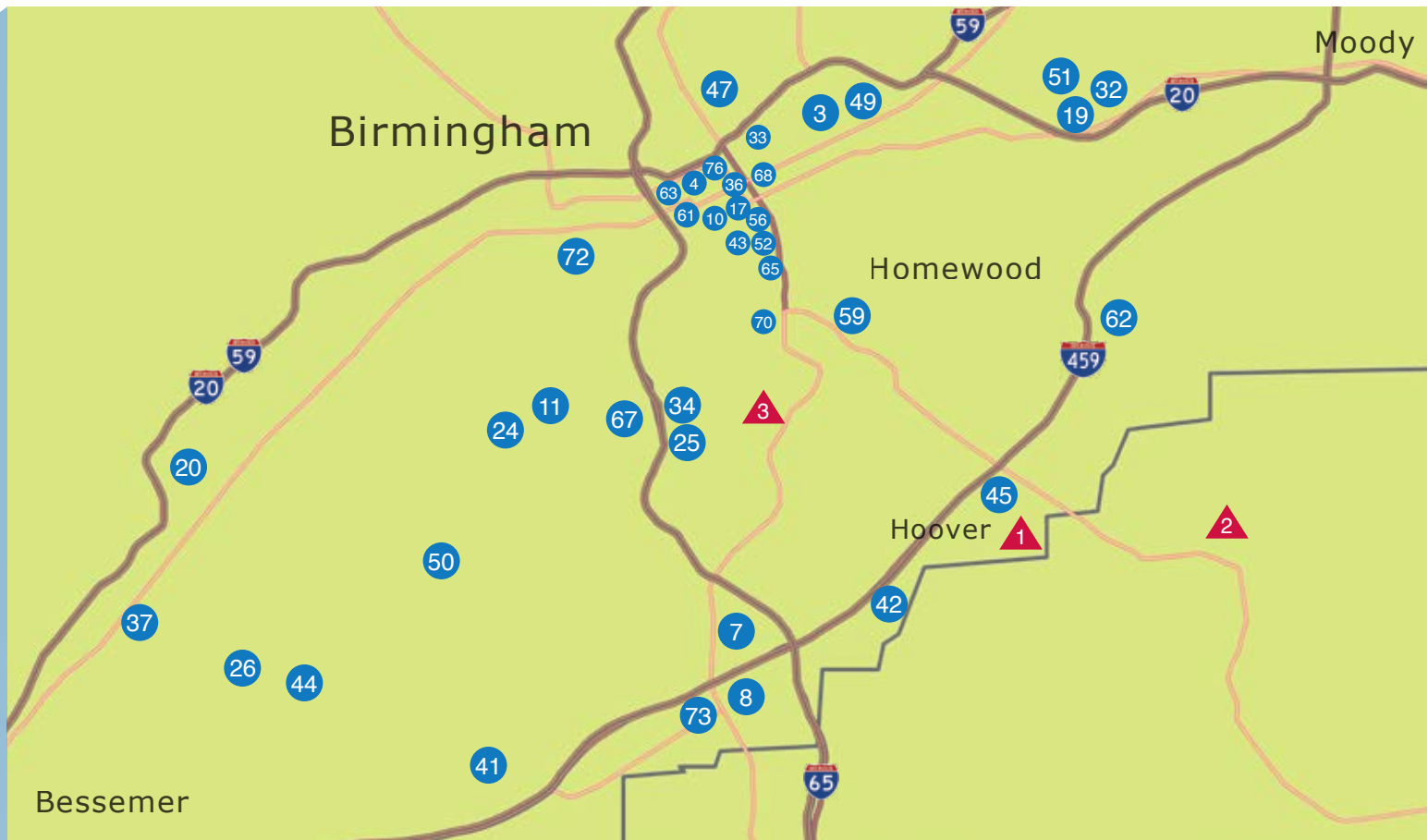


2014 NEW AND EXPANDING INDUSTRY MAP



The Birmingham region's 2014 economic growth: 79 companies announced 3,011 jobs and more than \$370,062,600 million in capital investment in the region's primary business sectors. Of the announced jobs and capital investment, 80 percent came from the expansion of existing companies.

COUNTY	ANNOUNCED JOBS	ANNOUNCED CAPITAL INVESTMENT
Bibb	0	-
Blount	18	\$1,500,000
Chilton	240	\$67,895,000
Jefferson	1,929	\$188,533,600
St. Clair	253	\$39,134,000
Shelby	426	\$63,600,000
Walker	145	\$9,400,000
Total	3,011	\$370,062,600



- 1. A & A Machine and Welding Inc.
 - 2. A & J Steel Products
 - 3. ABC Supply Co., Inc.
 - 4. Action Resources
 - 5. AGC Automotive Americas
 - 6. Alabama Guardrail, Inc
 - 7. Alfred International Corporation
 - 8. American Family Care, Inc.
 - 9. American Metal Technology
 - 10. Atlas RFID Solutions Inc.
 - 11. Buffalo Rock Company
 - 12. Central States Manufacturing, Inc.
 - 13. Charity Steel Corporation
 - 14. CMC Impact Metals
 - 15. Cutting Tool Engineers Inc.
 - 16. DAPA Products
 - 17. Dataperk
 - 18. Digital Marketing Services, Inc.
 - 19. Diversified Label Images
 - 20. Dunn Construction
 - 21. EBSCO (Wayne Industries)
 - 22. Eissmann Group Automotive North America
 - 23. Engineered Plastic Components, Inc.
 - 24. Evonik Corporation
 - 25. Expeditors International of Washington, Inc.
 - 26. Extec Industries (Crusher Works)
 - 27. Extruflex North America
 - 28. Georgia Pacific
 - 29. Grooms Aluminum Processing
 - 30. Hayashi Telemu North America
 - 31. Hydra-Power Systems, Inc.
 - 32. Imaging Business Machines, LLC.
 - 33. Induron Protective Coatings, LLC.
 - 34. Infomedia, Inc.
 - 35. Integracare Pharmacy
 - 36. IPG Photonics Corporation
 - 37. J.B. Processing
 - 38. Johnson Controls, Inc.
 - 39. Johnson Controls, Inc.
 - 40. Mar-Jac Poultry
 - 41. Material Systems, Inc.
 - 42. McLeod Software Corporation
 - 43. Meeting Street Graphics
 - 44. Milo's Tea Company, Inc.
 - 45. Morgan Stanley | Wealth Management
 - 46. Nitto Denko Corporation
 - 47. Nucor Steel Birmingham, Inc.
 - 48. O-Flex Automotive
 - 49. O'Neal Manufacturing Services
 - 50. Oxford Pharmaceuticals
 - 51. Peak Season, Inc.
 - 52. Pittman Financial Partners
 - 53. Plantation Patterns
 - 54. Power System Services
 - 55. PRADCO Outdoor Brands
 - 56. Precision High Voltage
 - 57. Processor's Choice
 - 58. ProctorU
 - 59. Protective Life Corporation
 - 60. Rain Bird
 - 61. Regions Financial Corporation
 - 62. Reliance Financial Group
 - 63. Renasant Bank
 - 64. South Coast Paper
 - 65. Spartan Value Investors
 - 66. SPOC Automation, Inc.
 - 67. State Farm Insurance Companies
 - 68. STERIS Corp. (IMS)
 - 69. Swagelok Alabama
 - 70. Technical Knock Out
 - 71. Temenos Group AG
 - 72. The Von Corporation
 - 73. T-Mobile Birmingham Financial Care Call Center
 - 74. Unipres Alabama
 - 75. Valmont Industries, Inc.
 - 76. Viva Health, Inc.
 - 77. Vulcan Industries
 - 78. West Frasier Lumber
 - 79. YP/LM Berry Company
- OTHER —————
- 1. Grandview Medical Center
 - 2. St. Vincent's 119
 - 3. Samford University

2014 NEW AND EXPANDING INDUSTRY LIST

	Company	County	City	New/ Exp.	Jobs	Investment	NAICS	Product Description
1	A & A Machine & Welding, Inc.	Walker	Jasper	E	10	\$-	332710	Manufacturing, machine shop and welding
2	A & J Steel Products	Blount	Snead	E	15	\$1,200,000	423510	Wholesale distribution, steel products
3	ABC Supply Co., Inc.	Jefferson	Birmingham	E	6	\$3,200,000	423390	Wholesale distribution, roofing supplies
4	Action Resources	Jefferson	Birmingham	N	40	\$3,200,000	484230	Transportation and logistics
5	AGC Automotive Americas	Shelby	Alabaster	E	0	\$3,000,000	327215	Manufacturing, automotive glass processing & sequencing
6	Alabama Guardrail, Inc	Blount	Cleveland	E	0	\$300,000	332322	Manufacturing, metal guardrails
7	Alfred International Corporation	Jefferson	Hoover	E	2	\$40,000	339999	Manufacturing, funeral and pet supplies, diverse business services
8	American Family Care, Inc.	Shelby	Hoover	E	51	\$35,000,000	551114	Corporate headquarters
9	American Metal Technology	St. Clair	Pell City	E	25	\$2,410,000	331314	Manufacturing, fabricated stainless steel and steel tubing
10	Atlas RFID Solutions Inc.	Jefferson	Birmingham	E	12	\$50,000	518210	IT, radio frequency tracking system
11	Buffalo Rock Company	Jefferson	Birmingham	E	0	\$9,500,000	312111	Manufacturing, soft drink beverages and food
12	Central States Manufacturing, Inc.	Walker	Jasper	E	10	\$400,000	423990	Manufacturing, distribution of building products
13	Charity Steel Corporation	Shelby	Calera	N	0	\$750,000	423510	Manufacturing, metals servicing
14	CMC Impact Metals	St. Clair	Pell City	E	20	\$4,000,000	331110	Manufacturing, structural steel bar heat treating
15	Cutting Tool Engineers Inc.	Shelby	Pelham	E	1	\$200,000	333517	Manufacturing, custom cutting tools for metal cutting
16	DAPA Products	Walker	Jasper	E	15	\$2,000,000	326199	Manufacturing, extruded plastics
17	Dataperk	Jefferson	Birmingham	E	12	\$2,200,000	518210	Information technology
18	Digital Marketing Services, Inc.	Shelby	Pelham	E	10	\$1,000,000	333244	Manufacturing, digital printing
19	Diversified Label Images	Jefferson	Irondale	E	16	\$3,854,600	323112	Manufacturing, commercial printing
20	Dunn Construction	Jefferson	Midfield	E	25	\$3,200,000	324121	Corporate headquarters, asphalt construction and material sales
21	EBSCO (Wayne Industries)	Chilton	Clanton	E	80	\$200,000	561499	Manufacturing, electric signs and displays
22	Eissmann Automotive North America	St. Clair	Pell City	E	120	\$2,500,000	336360	Manufacturing, leather components for automotive interiors
23	Engineered Plastic Components, Inc.	Jefferson	Leeds	N	110	\$7,300,000	326199	Manufacturing, automotive parts
24	Evonik Corporation	Jefferson	Birmingham	E	90	\$10,000,000	325199	Manufacturing, Pharmaceutical, R&D
25	Expeditors International of Washington, Inc.	Jefferson	Vestavia Hills	N	2	\$-	541614	Transportation and logistics
26	Extec Industries (Crusher Works)	Jefferson	Bessemer	Exp.	4	\$450,000	423810	Distribution and services, earth scalpers and screeners
27	Extruflex North America	Shelby	Pelham	New	10	\$750,000	326112	Manufacturing, PVC products
28	Georgia-Pacific	Chilton	Thorsby	Exp.	30	\$6,000,000	321214	Manufacturing, LVL laminated veneer lumber
29	Grooms Aluminum Processing	St. Clair	Ashville	New	10	\$1,000,000	331314	Manufacturing, metals processing
30	Hayashi Telemu North America	Walker	Jasper	Exp.	40	\$-	336390	Manufacturing, automotive interior components
31	Hydra-Power Systems, Inc.	Shelby	Pelham	New	8	\$900,000	423830	Manufacturing, hydraulic production

	Company	County	City	New/ Exp.	Jobs	Investment	NAICS	Product Description
32	Imaging Business Machines, LLC.	Jefferson	Irondale	Exp.	21	\$815,000	333318	Manufacturing, document Processing Equipment
33	Induron Protective Coatings, LLC	Jefferson	Birmingham	Exp.	1	\$20,000	325510	Manufacturing, industrial paint
34	Infomedia, Inc.	Jefferson	Vestavia Hills	Exp.	4	\$25,000	518210	IT, data processing, hosting and related services
35	Integracare Pharmacy	Shelby	Alabaster	New	5	\$800,000	621610	Distribution, packaging
36	IPG Photonics Corporation	Jefferson	Birmingham	Exp.	0	\$4,400,000	541712	Engineering, physics
37	J.B. Processing	Jefferson	Bessemer	Exp.	30	\$34,000,000	327991	Manufacturing, stone products
38	Johnson Controls, Inc.	Chilton	Clanton	Exp.	100	\$10,495,000	326100	Manufacturing, automobile seat adjuster systems
39	Johnson Controls, Inc.	Jefferson	McCalla	Exp.	100	\$10,000,000	326100	Manufacturing, automotive parts
40	Mar-Jac Poultry	Walker	Jasper	Exp.	50	\$7,000,000	31199	Manufacturing, food processing
41	Material Systems, Inc.	Jefferson	Bessemer	Exp.	3	\$550,000	488991	Transportation and logistics, supply chain
42	McLeod Software Corporation	Jefferson	Hoover	Exp.	92	\$796,000	541511	IT, dispatch and accounting, fleet management software
43	Meeting Street Graphics	Jefferson	Birmingham	Exp.	3	\$440,000	333244	Manufacturing, printing
44	Milo's Tea Company, Inc.	Jefferson	Bessemer	Exp.	29	\$13,100,000	312111	Manufacturing, tea bottling and distribution
45	Morgan Stanley Wealth Management	Jefferson	Birmingham	Exp.	7	\$-	523930	Financial services, investment advisory
46	Nitto Denko Corporation	Walker	Jasper	Exp.	20	\$-	335310	Manufacturing, automotive seals and gaskets
47	Nucor Steel Birmingham, Inc.	Jefferson	Birmingham	Exp.	0	\$5,800,000	331110	Manufacturing, carbon steel reinforcing bars
48	O-Flex Automotive	Chilton	Clanton	Exp.	20	\$200,000	331314	Manufacturing, metals processing
49	O'Neal Manufacturing Services	Jefferson	Birmingham	Exp.	48	\$5,100,000	331110	Manufacturing, metal products and processing services
50	Oxford Pharmaceuticals	Jefferson	Birmingham	New	200	\$29,400,000	325412	Manufacturing, Pharmaceutical, R&D
51	Peak Season, Inc.	Jefferson	Irondale	Exp.	15	\$4,500,000	337124	Manufacturing, outdoor furniture
52	Pittman Financial Partners	Jefferson	Birmingham	Exp.	8	\$-	523930	Financial services, investment advisory
53	Plantation Patterns	Shelby	Calera	New	50	\$6,000,000	423210	Distribution, outdoor furniture
54	Power System Services	Blount	Cleveland	Exp.	3	\$-	811310	Maintenance, electric service repair
55	PRADCO Outdoor Brands	Shelby	Calera	Exp.	0	\$7,000,000	423910	Distribution, hunting and fishing brands
56	Precision High Voltage	Jefferson	Birmingham	Exp.	20	\$4,000,000	333999	Manufacturing, industrial services
57	Processor's Choice	St. Clair	Moody	New	21	\$10,000,000	424490	Wholesale distribution
58	ProctorU	Shelby	Hoover	Exp.	77	\$-	611710	IT, data processing
59	Protective Life Corporation	Jefferson	Birmingham	Exp.	84	\$-	524113	Corporate headquarters
60	Rain Bird	St. Clair	Steele	Exp.	43	\$11,800,000	326122	Manufacturing, irrigation tubing products
61	Regions Financial Corporation	Jefferson/ Shelby	Birmingham/ Hoover	Exp.	195	\$18,630,000	522110	Financial services, back office operations
62	Reliance Financial Group	Jefferson	Vestavia Hills	Exp.	10	\$-	523930	Financial services, investment advisory, back office
63	Renasant Bank	Jefferson	Birmingham	Exp.	19	\$-	523930	Financial services, business operations

2014 NEW AND EXPANDING INDUSTRY LIST

	Company	County	City	New/ Exp.	Jobs	Investment	NAICS	Product Description
64	South Coast Paper	Chilton	Maplesville	Exp.	10	\$1,000,000	322230	Manufacturing, custom converter of cut size papers
65	Spartan Value Investors	Jefferson	Birmingham	Exp.	4	\$1,900,000	523930	Financial services, investment advisory
66	SPOC Automation, Inc.	Jefferson	Trussville	Exp.	35	\$2,000,000	335314	Manufacturing, relay and industrial control
67	State Farm Insurance Companies	Jefferson	Homewood	Exp.	238	\$-	524298	Insurance, Birmingham Operation Center
68	STERIS Corp. (IMS)	Jefferson	Birmingham	New	100	\$10,063,000	339112	Manufacturing, medical instruments
69	Swagelok Alabama	Shelby	Hoover	Exp.	0	\$3,500,000	423830	Distribution, fluid system components
70	Technical Knock Out	Jefferson	Homewood	Exp.	2	\$-	541511	IT, computer and electronic recycling
71	Temenos Group AG	Shelby	Hoover	New	49	\$3,000,000	541511	IT, software
72	The Von Corporation	Jefferson	Birmingham	Exp.	2	\$-	551114	Manufacturing, high voltage electric equipment
73	T-Mobile Birmingham Financial Care Call Center	Jefferson	Hoover	Exp.	100	\$-	561422	Telecommunications, cellular service - back office
74	Unipres Alabama	St. Clair	Steele	New	0	\$-	336370	Manufacturing, automotive parts
75	Valmont Industries, Inc.	St. Clair	Ashville	Exp.	7	\$2,300,000	332812	Manufacturing, hot dip galvanizing
76	Viva Health, Inc.	Jefferson	Birmingham	Exp.	240	\$-	551114	Insurance, corporate headquarters
77	Vulcan Industries	St. Clair	Moody	Exp.	7	\$5,124,000	337215	Manufacturing, custom store displays
78	West Frasier Lumber	Chilton	Maplesville	Exp.	0	\$50,000,000	321113	Manufacturing, lumber
79	YP/LM Berry Company	Shelby	Birmingham	Exp.	165	\$1,700,000	541511	IT, web applications
Total Metropolitan Birmingham New and Expanding Companies					79	3,011	\$370,062,600	

METROPOLITAN BIRMINGHAM 2014 NEW AND EXPANDING COMPANIES, OTHER CATEGORY

	Company	County	City	New/ Exp.	Jobs	Investment	NAICS	Product Description
1	Grandview Medical Center	Jefferson	Birmingham	E	0	\$107,000,000	621910	Health Care Services
2	St. Vincent's 119	Shelby	Birmingham	E	0	\$16,000,000	713940	Health care, personal services
3	Samford University	Jefferson	Homewood	E	27	\$10,110,284	611310	Education, post-secondary
Total Seven County New and Expanding Companies					27	\$133,110,284		

Profiled on these pages are the 79 companies, within the region's primary business sectors, that announced 3,011 jobs and \$370 million in capital investment in the Birmingham seven-county region during 2014. Their investments represent confidence in the regional business climate and the ability to sustain growth. Some are new to our community, while others have made the region their home for many years, but they all agree that Birmingham is a great place to grow their business.



A & J Steel Products

Expanding Industry: Wholesale distribution, steel products
Location: Snead, AL
of jobs announced in 2014: 15
Capital Investment: \$1,200,000
Headquarters: Snead, AL
Website: www.aandjsteel.net
NAICS: 423510



A&J Steel is a full-line steel distributor specializing in pipe and tubing. Its mission is to make steel buying easy for all of its customers.



Action Resources

New Industry: Transportation and Logistics
Location: Birmingham, AL
of jobs announced in 2014: 40
Capital Investment: \$3,200,000
Headquarters: Birmingham, AL
Website: www.action-resources.com
NAICS: 484230



Action Resources provides transportation services involving specialty chemicals and hazardous waste throughout the U.S. and Canada.



A&A Machine & Welding Inc.

Expanding Industry: Manufacturing, machine shop and welding
Location: Jasper, AL
of jobs announced in 2014: 10
Headquarters: Jasper, AL
Website: www.aamachine1.com
NAICS: 332710



A&A Machine and Welding Inc. began operations in 1978 and incorporated in 1982. Its facility in Jasper spans more than 70,000 square feet, allowing several large fabrication jobs in process concurrently. It has a staff with many combined years experience in both precision machinery and welding fabrication. Since its shop is operated as a job shop, it has experience in several areas of the machine and fabrication shop industry.



ABC Supply Co. Inc.

Expanding Industry: Wholesale distribution, roofing supplies
Location: Birmingham, AL
of jobs announced in 2014: 6
Capital investment: \$3,200,000
Headquarters: Beloit, WI
Website: www.abcsupply.com
NAICS: 423390



ABC Supply Co. Inc. is the largest wholesale distributor of roofing materials in the United States and one of the nation's largest distributors of siding, windows and other select exterior building products, tools and related supplies. Since its start in 1982, it has grown to become a national organization with more than 450 branches and other facilities in 44 states.



AGC Automotive Americas

Expanding Industry: Manufacturing, automotive glass processing & sequencing
Location: Alabaster, AL
Capital investment: \$3,000,000
Headquarters: Tokyo, Japan
Website: www.agc-automotive.com
NAICS: 327215



AGC Group is in global cooperation with Asahi Glass Co., Ltd. in the center of the group, and focuses on five business areas—automotive glass, flat glass, display, chemicals, and electronics & energy taking pride in its world-class core technologies with glass, fluorine chemistry, and other key areas. The automotive glass division of AGC Group, strives to provide quality products and services worldwide as an automotive glazing supplier under its unified global brand, 'AGC Automotive'. AGC Automotive mainly produces and sells automotive glass for new vehicles and aftermarket replacement glass, and has top global market share with the new vehicle market.



Alabama Guardrail Inc.

Expanding Industry: Manufacturing, metal guardrails
Location: Cleveland, AL
Capital investment: \$300,000
Headquarters: Cleveland, AL
NAICS: 332322

Manufactures metal guardrails



Alfred International Corp.

Expanding Industry: Manufacturing, funeral and pet supplies, diverse business services
Location: Hoover, AL
of jobs announced in 2014: 2
Capital investment: \$40,000
Headquarters: Hoover, AL
Website: <http://www.funeral3386.com/>
NAICS: 339999



Alfred International Corp.'s groups specialize in global importing/exporting trading, as well as joint venture into promising industries.



American Family Care Inc.

Expanding Industry: Corporate headquarters
Location: Hoover, AL
of jobs announced in 2014: 51
Capital investment: \$35,000,000
Headquarters: Birmingham, AL
Website: www.americanfamilycare.com
NAICS: 551114



American Family Care opened its first family care/urgent care clinic in Birmingham in 1982. Today, there are clinics in Alabama, Tennessee, Georgia, and Florida. The clinics utilize technologically advanced treatments and equipment such as digital X-rays, onsite labs, and electronic medical records. Our network of family care/urgent care clinics provides accessible primary care, urgent care for illnesses or injuries that are non-life threatening, family medicine to patients of all ages, and comprehensive occupational medicine to businesses and organizations of all sizes and scopes.



American Metal Technology

Expanding Industry: Manufacturing, fabricated stainless steel and steel tubing
Location: Pell City, AL
of jobs announced in 2014: 25
Capital investment: \$2,410,000
Headquarters: Pell City, AL
Website: www.amtechinc.net
NAICS: 331314



American Metal Technology manufactures products ranging from straight length tubing to highly engineered heat exchangers. State-of-the-art equipment ensures quality and consistency. World class manufacturing processes drive quality from design to final production.



Atlas RFID Solutions Inc.

Expanding Industry: IT, radio frequency tracking system
Location: Birmingham, AL
of jobs announced in 2014: 12
Capital investment: \$50,000
Headquarters: Birmingham, AL
Website: www.atlasrfid.com
NAICS: 518210



Atlas RFID Solutions, Inc. was founded in 2007 to bridge the gap between the capabilities of auto-ID technology and the commercial needs of efficiency-conscious firms. It develops and implements auto-ID based systems throughout the world, with over 50 deployments spanning more than five countries on three different continents.



Buffalo Rock Co.

Expanding Industry: Manufacturing, soft drink beverages and food
Location: Birmingham, AL
Capital investment: \$9,500,000
Headquarters: Birmingham, AL
Website: www.buffalorock.com
NAICS: 312111



Buffalo Rock Co. is a premier provider of beverages and food products. It has 10 divisions inclusive of 2,100 employee-partners. It is the largest independent single shareholder-owned Pepsi Bottler in the United States, the third largest Sunkist; the sixth largest Dr Pepper and the 10th largest Canada Dry bottler in the nation.



Central States Manufacturing Inc.

Expanding Industry: Manufacturing, distribution of building products

Location: Jasper, AL

of jobs announced in 2014: 10

Capital investment: \$400,000

Headquarters: Lowell, AR

Website: www.centralstatesmfg.com

NAICS: 423990



Central States manufactures four quality exposed fastener panels and a concealed fastener panel. It also provides trims, gutters, accessories and a variety of purlin profiles in red oxide and galvanized finishes, and produces and distributes trapezoidal standing seam products.



Charity Steel Corp.

New Industry: Manufacturing, metals servicing

Location: Calera, AL

Capital investment: \$750,000

Headquarters: Calera, AL

Website: www.charitysteel.com

NAICS: 423510



Aluminum, brass, CF carbon and alloy, ductile, HR carbon and alloy bar and stainless bar products; DOM, hot finished seamless, cold drawn seamless, chromed OD tubing, chromed ID tubing and hydraulic tubing; and band saw cutting mitre cutting, production cold saw.



CMC Impact Metals

Expanding Industry: Manufacturing, structural steel bar heat treating

Location: Pell City, AL

of jobs announced in 2014: 20

Capital investment: \$4,000,000

Headquarters: Irving, TX

Website: www.cmc.com

NAICS: 331110



CMC Impact Metals is a national leader in the production of heat treated specialty steel products. Our products – high strength steel, impact resistant steel, armor plate, precision steel – provide the strength and toughness required for demanding applications in the military equipment, transportation, energy, mining and construction markets.

Cutting Tool Engineers Inc.

Expanding Industry: Manufacturing, custom cutting tools for metal cutting

Location: Pelham, AL

of jobs announced in 2014: 1

Capital investment: \$200,000

Website: www.cuttingtoolengineers.com

NAICS: 333517



Cutting Tool Engineers was founded in 1979 with the purpose of providing a prompt and dependable source for quality cutting tool service. We have 32 grinders with appropriate inspection and support equipment. This allows us to minimize set-up and turn around time, with delivery time on most jobs is two to three weeks, which allows the flexibility to provide service for same day or next day rush jobs.



DAPA Products

Expanding Industry: Manufacturing, extruded plastics

Location: Jasper, AL

of jobs announced in 2014: 15

Capital investment: \$2,000,000

Headquarters: Jasper, AL

Website: www.dapaproducts.com

NAICS: 326199



DAPA Products was formed with the idea of creating a small family-owned business. For years its original founders had been involved in many areas of management and distribution. Competition on plastics products had become very strong and it seemed that the only way to remain successful was to become the manufacturer rather than the distributor. DAPA Products manufactures extruded plastic products - window, door, screen and upholstered furniture industry.



DataPerk

Expanding Industry: Information technology

Location: Birmingham, AL

of jobs announced in 2014: 12

Capital investment: \$2,200,000

Headquarters: Birmingham, AL

Website: www.dataperk.com

NAICS: 518210



From web design and hosting, to network design, cabling, and hardware/software support, DataPerk's experienced staff has the skills required to meet the technology needs of any business. DataPerk offers managed services and a host of other tools needed to survive in business today. Its existing customer base includes nonprofits and businesses from virtually all market sectors.



Digital Marketing Services Inc.

Expanding Industry: Manufacturing, digital printing
Location: Pelham, AL
of jobs announced in 2014: 10
Capital investment: \$1,000,000
Headquarters: Pelham, AL
Website: www.dmscolor.com
NAICS: 333244



Digital Marketing Services was founded in 2006 as a digital printing company and today is one of the largest web to print service providers in America, operating in a 12,000 square foot building.



Diversified Label Images

Expanding Industry: Manufacturing, commercial printing
Location: Irondale, AL
of jobs announced in 2014: 16
Capital investment: \$3,854,600
Headquarters: Irondale, AL
Website: www.diversifiedlabel.com
NAICS: 323112



Diversified Label Images offers the versatility and consistency of flexographic printing for both custom projects and ready-made materials. It partners with clients to create custom targeted solutions for specific needs.



Dunn Construction

Expanding Industry: Corporate headquarters, asphalt construction and material sales
Location: Midfield, AL
of jobs announced in 2014: 25
Capital investment: \$3,200,000
Headquarters: Birmingham, AL
Website: www.dunnconstruction.com
NAICS: 324121



Asphalt construction and material sales.



EBSCO (Wayne Industries)

Expanding Industry: Manufacturing, electric signs and displays
Location: Clanton, AL
of jobs announced in 2014: 80
Capital investment: \$200,000
Headquarters: Birmingham, AL
Website: www.ebscoind.com
NAICS: 561499



With more than 30 years in the sign-manufacturing industry, Wayne Industries has developed a reputation for creatively solving customers' challenges and delivering a high-quality product at a competitive price. Wayne Industries is the preferred manufacturer for several large, national multi-location retailers and franchisors, working in a variety of ways to meet rigorous corporate branding requirements and aggressive expansion plans.



Eissmann Automotive North America

Expanding Industry: Manufacturing, leather components for automotive interiors
Location: Pell City, Alabama
of jobs announced in 2014: 120
Capital investment: \$2,500,000
Headquarters: Bad Urach, Germany
Website: www.eissmann.com
NAICS: 336360



Eissmann Automotive North America is originally known throughout the automotive industry as a supplier of top-quality leather trim for vehicle interiors. Today it is a competent system supplier working in cooperation with almost all the big names in the world of automotive engineering.



Engineered Plastic Components Inc.

New Industry: Manufacturing, automotive parts
Location: Leeds, AL
of jobs announced in 2014: 110
Capital investment: \$7,300,000
Headquarters: Grinnell, IA
Website: www.epcmfg.com
NAICS: 326199



EPC has been supporting projects and manufacturing parts and assemblies for auto makers in America since it was founded. With its wide range of capabilities, EPC produces simple shoot-and-ship parts all the way to complete instrument panel (IP) assemblies for luxury and non-luxury lines, complete door panel assemblies, complete HVAC assemblies and many more interior and exterior parts.



Evonik Corp.

Expanding Industry: Manufacturing, Pharmaceutical, R&D
Location: Birmingham, AL
of jobs announced in 2014: 90
Capital investment: \$10,000,000
Headquarters: Essen, Germany
Website: www.evonik.com
NAICS: 325199

Evonik is one of the world's leading specialty chemicals companies.



Expeditors International of Washington Inc.

New Industry: Transportation and logistics
Location: Vestavia Hills, AL
of jobs announced in 2014: 2
Headquarters: Seattle, WA
Website: www.expeditors.com
NAICS: 541614



Expeditors is a Fortune 500 global logistics company that employs over 13,000 trained professionals in a worldwide network of over 250 locations across six continents. Expeditors satisfies the increasingly sophisticated needs of international trade through customized solutions and seamless, integrated information systems. Services include the consolidation and forwarding of air or ocean freight, customs brokerage, vendor consolidation, cargo insurance, time-definite transportation, order management, warehousing, distribution and customized logistics solutions.



Extex Industries (Crusher Works)

Expanding Industry: Distribution and services, earth scalpers and screeners
Location: Bessemer, AL
of jobs announced in 2014: 4
Capital investment: \$450,000
Headquarters: Bessemer, AL
Website: www.crusherworks.com
NAICS: 423810



Crusher Works sells and services aggregate machinery with products including crushers, screens, shredders, grinders, chippers and conveyors. It has a combined experience of over 30 years supporting a wide range of industries including recycling, sand and gravel, limestone quarries, coal mines, asphalt, concrete, demolition, top soil, mulch, and compost.



Extruflex North America

New Industry: Manufacturing, PVC products
Location: Pelham, AL
of jobs announced in 2014: 10
Capital investment: \$750,000
Headquarters: Levallois Perret, France
Website: www.extruflex.com
NAICS: 326112



For more than 45 years, Extruflex has been at the forefront in the world of flexible PVC production. From its formulation using only selected raw material for compounding to its final conversion into strips and sheets via the extrusion process. The total integration of compounding and extrusion techniques has ensured optimum quality and technical excellence over our whole product range.



Georgia-Pacific

Expanding Industry: Manufacturing, laminated veneer lumber
Location: Thorsby, AL
of jobs announced in 2014: 30
Capital investment: \$6,000,000
Headquarters: Atlanta, GA
Website: www.gp.com
NAICS: 321214



Georgia-Pacific is one of the world's leading makers of tissue, pulp, paper, packaging, building products and related chemicals.

Grooms Aluminum Processing

New Industry: Manufacturing, metals processing
Location: Ashville, AL
of jobs announced in 2014: 10
Capital investment: \$1,000,000
Headquarters: Ashville, AL
NAICS: 331314



Aluminum processing.



Hayashi Telemu North America

Expanding Industry: Manufacturing, automotive interior components
Location: Jasper, AL
of jobs announced in 2014: 40
Headquarters: Nagoya, Japan
Website: www.amtexna.com
NAICS: 336390



Hayashi Telemu North America provides innovative automotive interior products that create value to customers and communities through the practice of leading edge technology and continuous improvement.



Hydra-Power Systems Inc.

New Industry: Manufacturing, hydraulic production
Location: Pelham, AL
of jobs announced in 2014: 8
Capital investment: \$900,000
Headquarters: Portland, OR, & Birmingham, AL
Website: www.hpsx.com
NAICS: 423830



Since 1970, Hydra-Power Systems has specialized in distribution of quality hydraulic and pneumatic components, design and manufacturing of Hydraulic and Pneumatic Valve Manifolds, design and manufacturing of Hydraulic Power Units and Custom Hydraulic Equipment. HPS provides products and services to: OEM's, re-sellers, and users in all industries; Mobile-Industrial-Marine-Mining-Agriculture-Subsea-Construction-Forest Products and Entertainment Industries throughout North America and Internationally.



Imaging Business Machines LLC

Expanding Industry: Manufacturing, document processing equipment
Location: Irondale, AL
of jobs announced in 2014: 21
Capital investment: \$815,000
Headquarters: Birmingham, AL
Website: www.ibml.com
NAICS: 333318



ibml is a global provider of end-to-end information capture solutions, combining its ImageTrac® intelligent scanners and other scanners with our advanced capture software and services. It is information capture experts focused on solving the operational requirements and challenges of capturing content from documents, and providing the most accurate and complete data possible to back-end content management and enterprise applications.



Induron Protective Coatings LLC

Expanding Industry: Manufacturing, industrial paint
Location: Birmingham, AL
of jobs announced in 2014: 7
Capital investment: \$20,000
Headquarters: Birmingham, AL
Website: www.induron.com
NAICS: 325510



Manufacturer and distributor of industrial coatings and finishes.



Infomedia Inc.

Expanding Industry: IT, data processing, hosting and related services
Location: Vestavia Hills, AL
of jobs announced in 2014: 4
Capital investment: \$25,000
Headquarters: Vestavia Hills, AL
Website: www.infomedia.com
NAICS: 518210



Infomedia is a Birmingham-based web consulting firm with 20 years of experience in web design and website construction.



Integracare Pharmacy

New Industry: Distribution, packaging
Location: Alabaster, AL
of jobs announced in 2014: 5
Capital investment: \$800,000
Headquarters: Alabaster, AL
Website: www.integracare.biz
NAICS: 621610



IntegraCare Pharmacy specializes in handling all levels of resident care. Our goal is to make sure that the staff at your facility has everything they need to provide outstanding service to the residents under their care. The company packages medication in a variety of convenient systems that insure ease of administration for nursing staff.



IPG Photonics Corp.

Expanding Industry: Engineering, physics
Location: Birmingham, AL
Capital investment: \$4,400,000
Headquarters: Oxford, MA
Website: www.ipgphotonics.com
NAICS: 541712



IPG Photonics is the leading developer and manufacturer of high-performance fiber lasers and amplifiers for diverse applications in numerous markets. IPG Photonics' diverse lines of low, mid and high-power lasers and amplifiers are used in materials processing, communications, medical and advanced applications.

J.B. Processing

Expanding Industry: Manufacturing, stone products
Location: Bessemer AL
of jobs announced in 2014: 30
Capital investment: \$34,000,000
Headquarters: Bessemer AL
NAICS: 327991



J.B. Processing (Masonry Arts) is a 300-person, single-source specialty contractor installing masonry, architectural precast and stone. Masonry Arts has worked on projects in Europe, the Caribbean, Russia, the Middle East and throughout the United States. Other services include forensic investigations, budget and system analysis and emergency stabilization/dry-in measures for damaged, unstable or leaking masonry and stone exteriors, as well as historic restoration of both interior stone and exterior stone cladding.



Johnson Controls Inc.

Expanding Industry: Manufacturing, automobile seat adjuster systems
Location: Clanton, AL
of jobs announced in 2014: 100
Capital investment: \$10,495,000
Headquarters: Milwaukee, WI
Website: www.johnsoncontrols.com
NAICS: 326100



Johnson Controls Inc. is an American company globally offering products and services to optimize energy and operational efficiencies of buildings, automotive batteries, electronics and interior systems for automobiles.



Johnson Controls Inc.

Expanding Industry: Manufacturing, automotive parts
Location: McCalla, AL
of jobs announced in 2014: 100
Capital investment: \$10,000,000
Headquarters: Milwaukee, WI
Website: www.johnsoncontrols.com
NAICS: 326100



Johnson Controls Inc. is an American company globally offering products and services to optimize energy and operational efficiencies of buildings, automotive batteries, electronics and interior systems for automobiles.



Mar-Jac Poultry

Expanding Industry: Manufacturing, food processing
Location: Jasper, AL
of jobs announced in 2014: 50
Capital investment: \$7,000,000
Headquarters: Gainesville, GA
Website: www.marjacpoultry.com
NAICS: 31199



Mar-Jac Poultry is a fully integrated poultry processor committed to the food service industry. This integration affords total quality process control throughout the production process from the farm to the table.

Material Systems, Inc.

Material Systems Inc.

Expanding Industry: Transportation and logistics, supply chain
Location: Bessemer, AL
of jobs announced in 2014: 3
Capital investment: \$550,000
Headquarters: Bessemer, AL
Website: www.materialsys.com
NAICS: 488991



Material Systems Inc. provides design, build and servicing of custom returnable packaging for the Southeastern automotive manufacturing market. From shipping point, sequencing point, repacking center, to line placement, its experience in constraints, ergonomics, durability and part sensitivity provide for the ability to create lasting unique custom solutions.



McLeod Software Corp.

Expanding Industry: IT, dispatch and accounting, fleet management software
Location: Hoover, AL
of jobs announced in 2014: 92
Capital investment: \$796,000
Headquarters: Vestavia Hills, AL
Website: www.mcleodsoftware.com
NAICS: 541511



McLeod Software offers a variety of solutions to serve companies in trucking centric businesses, including trucking dispatch operations, brokerage solutions, freight management solutions, document management and workflow and operations excellence solutions.



Meeting Street Graphics

Expanding Industry: Manufacturing, printing
Location: Birmingham, AL
of jobs announced in 2014: 3
Capital investment: \$440,000
Headquarters: Birmingham, AL
Website: www.meetingstreetgraphics.com
NAICS: 333244



Since 1972, Simmons Nameplate & Design (Meeting Street Graphics) has provided graphics and custom printed items to a wide variety of industries, from custom graphics for finished products, to safety signs and decals, to banners, magnets and other printed items.



Milo's Tea Co. Inc.

Expanding Industry: Manufacturing, tea bottling and distribution
Location: Bessemer, AL
of jobs announced in 2014: 29
Capital investment: \$13,100,000
Headquarters: Birmingham, AL
Website: www.drinkmilos.com
NAICS: 312111



Brewer and distributor of Milo's Famous Sweet Tea.

Morgan Stanley

Morgan Stanley Wealth Management

Expanding Industry: Financial services, investment advisory
Location: Birmingham, AL
of jobs announced in 2014: 7
Headquarters: New York, NY
Website: www.morganstanley.com
NAICS: 523930



Financial and investment advisory services.



Nitto Denko Corp.

Expanding Industry: Manufacturing, automotive seals and gaskets
Location: Jasper, AL
of jobs announced in 2014: 20
Headquarters: Osaka, Japan
Website: www.nitto.com
NAICS: 335310



Nitto was founded in 1918 to produce electrical insulation materials and has grown to be a leader in the energy materials, industrial tapes, environmental solution, optronics and life sciences markets.



Nucor Steel Birmingham Inc.

Expanding Industry: Manufacturing, carbon steel reinforcing bars
Location: Birmingham, AL
Capital investment: \$5,800,000
Headquarters: Charlotte, NC
Website: www.nucor.com
NAICS: 331110



With a production capacity that exceeds 27 million tons, Nucor is the largest producer of steel in the United States. Nucor and affiliates are manufacturers of steel products, with operating facilities primarily in the U.S. and Canada. Products produced include: carbon and alloy steel – in bars, beams, sheet and plate; steel piling; steel joists and joist girders; steel deck; fabricated concrete reinforcing steel; cold finished steel; steel fasteners; metal building systems; steel grating and expanded metal; and wire and wire mesh.



O-Flex Automotive

Expanding Industry: Manufacturing, metals processing
Location: Clanton, AL
of jobs announced in 2014: 20
Capital investment: \$200,000
Headquarters: Tokyo, Japan
Website: www.oflex.com
NAICS: 331314



O-Flex Automotive's services include OEA Impact Tubing for vehicle occupant crash protection; OEEA Pedestrian Impact protection for front and rear bumper applications; Thermal Insulation protection for both sleeve and blanket applications; Fabricated Metal Tubing Products made to demanding customer design requirements.



O'Neal Manufacturing Services

Expanding Industry: Manufacturing, metal products and processing services
Location: Birmingham, AL
of jobs announced in 2014: 48
Capital investment: \$5,100,000
Headquarters: Birmingham, AL
Website: www.onealmfgservices.com
NAICS: 331110



O'Neal Manufacturing Services (OMS) offers unmatched supplier alignment for outsourced manufacturing of fabricated metal components and welded sub-assemblies. With 10 manufacturing facilities located throughout North America, OMS supports original equipment manufacturers who build their products in the U.S., supplying them with superior customer service and quality contract metal manufacturing, metal fabrication services, subassemblies and weldments. Its contract metal fabrication offerings include steel fabrication, tube processing, plasma cutting, laser cutting, metal forming, welding, machining and more to support OEMs in America.

Oxford Pharmaceuticals

Oxford Pharmaceuticals

New Industry: Manufacturing, Pharmaceutical, R&D
Location: Birmingham, AL
of jobs announced in 2014: 200
Capital investment: \$29,400,000
Headquarters: Oxford, England
NAICS: 325412



Pharmaceutical manufacturing.



Peak Season Inc.

Expanding Industry: Manufacturing, outdoor furniture
Location: Irondale, AL
of jobs announced in 2014: 15
Capital investment: \$4,500,000
Headquarters: Irondale, AL
Website: www.peakseasoninc.net
NAICS: 337124



Peak Season manufactures fine outdoor casual furnishings and items for the entire outdoor living marketplace.



Pittman Financial Partners

Expanding Industry: Financial services, investment advisory
Location: Birmingham, AL
of jobs announced in 2014: 8
Headquarters: Memphis, TN
Website: www.strategicfinancialpartners.com
NAICS: 523930



Pittman Financial Partners assists individuals, families, business owners and professionals throughout the Southeast by developing completely personalized financial strategies.



Plantation Patterns

New Industry: Distribution, outdoor furniture
Location: Calera, AL
of jobs announced in 2014: 50
Capital investment: \$6,000,000
Headquarters: Irondale, AL
Website: www.plantationpatterns.com
NAICS: 423210



Plantation Patterns is one of North America's leading manufacturers of cushions, pillows, umbrellas, outdoor decor and accessories.



Power System Services

Expanding Industry: Maintenance, electric service repair
Location: Cleveland, AL
of jobs announced in 2014: 3
Headquarters: Cleveland, AL
NAICS: 811310

Maintenance and electric service repair.



PRADCO Outdoor Brands

Expanding Industry: Distribution, hunting and fishing brands
Location: Calera, AL
Capital investment: \$7,000,000
Headquarters: Birmingham, AL
Website: www.pradcooutdoorbrands.com
NAICS: 423910



PRADCO Outdoor Brands is the largest company in the world that manufactures and markets major hunting and fishing brands and products under one parent organization. It is a leader in producing game calls, scents, attractants, game feeders, game cameras, tree stands and fishing lures.



Precision High Voltage

Expanding Industry: Manufacturing, industrial services
Location: Birmingham, AL
of jobs announced in 2014: 20
Capital investment: \$4,000,000
Headquarters: Birmingham, AL
Website: www.jayelectric.com
NAICS: 333999

Precision High Voltage (Jay Electric Company) is an industrial service and manufacturing business focused on quality on-time solutions in electric motor and controls sales and service headquarters.



Processor's Choice

New Industry: Wholesale distribution
Location: Moody, AL
of jobs announced in 2014: 21
Capital investment: \$10,000,000
Headquarters: Irondale, AL
Website: www.processorschoice.com
NAICS: 424490

Processors Choice is a full-service distributor and broker of quality industrial food ingredients, with experienced technical sales covering the Southeastern portion of United States.



ProctorU

Expanding Industry: IT, data processing
Location: Hoover, AL
of jobs announced in 2014: 77
Headquarters: Hoover, AL
Website: www.proctoru.com
NAICS: 611710

ProctorU provides live student identity management and proctoring services for higher education that allow institutions to securely identify and test students anywhere. As an extension of the institution, ProctorU helps ensure the academic integrity of not only colleges and universities, but also that of their students. Founded in 2008, ProctorU has administered one million exams for test-takers in 75 countries and works with more than 500 institutions.



Protective Life Corp.

Expanding Industry: Corporate headquarters
Location: Birmingham, AL
of jobs announced in 2014: 84
Headquarters: Birmingham, AL
Website: www.protective.com
NAICS: 524113

Protective Life Corporation helps provide financial services through the production, distribution and administration of insurance and investment products throughout the U.S. Protective is committed to tearing down the barriers that prevent people from enjoying the peace of mind and satisfaction that come from taking care of their future financial needs and the needs of those who depend on them. The company has annual revenues of approximately \$4.4 billion and as of December 31, 2014, had assets of approximately \$70.5 billion.





Rain Bird

Expanding Industry: Manufacturing, irrigation tubing products

Location: Steele, AL

of jobs announced in 2014: 43

Capital investment: \$11,800,000

Headquarters: Azusa, CA

Website: www.rainbird.com

NAICS: 326122



Rain Bird Corporation is a manufacturer and provider of irrigation products and services. Rain Bird offers a broad range of irrigation products for farms, golf courses, sports arenas, commercial developments and homes in more than 130 countries around the world.



Regions Financial Corp.

Expanding Industry: Financial services, back office operations

Location: Birmingham/Hoover, AL

of jobs announced in 2014: 195

Capital investment: \$18,630,000

Headquarters: Birmingham, AL

Website: www.regions.com

NAICS: 522110



Regions Financial Corporation (NYSE:RF), with \$120 billion in assets, is a member of the S&P 500 Index and is one of the nation's largest full-service providers of consumer and commercial banking, wealth management, mortgage, and insurance products and services. Regions serves customers in 16 states across the South, Midwest and Texas, and through its subsidiary, Regions Bank, operates approximately 1,650 banking offices and 2,000 ATMs.



Reliance Financial Group

Expanding Industry: Financial services, investment advisory, back office

Location: Vestavia Hills, AL

of jobs announced in 2014: 10

Headquarters: Vestavia Hills, AL

Website: www.rfgadvisory.com

NAICS: 523930



Reliance Financial Group is a financial investment advisory firm with a team-based approach to comprehensive wealth planning that provides access to more than 100 years of combined knowledge and experience in pursuing personal and business goals.



Renasant Bank

Expanding Industry: Financial services, business operations

Location: Birmingham, AL

of jobs announced in 2014: 19

Headquarters: Tupelo, MS

Website: www.renasantbank.com

NAICS: 523930



Financial institute whose parent company has assets of approximately \$5.8 billion and operates more than 120 banking, mortgage, financial services and insurance offices in Mississippi, Tennessee, Alabama and Georgia.



South Coast Paper

Expanding Industry: Manufacturing, custom converter of cut size papers

Location: Maplesville, AL

of jobs announced in 2014: 10

Capital investment: \$1,000,000

Headquarters: Columbia, SC

Website: www.southcoastpaper.com

NAICS: 322230



Headquartered in Columbia, SC, South Coast Paper is an independently owned paper converting and sales and marketing company offering a diverse line of high quality paper products. South Coast Paper's subsidiary, South Coast Solutions, provides paper and packaging solutions nationwide for corporations and commercial printing companies.



Spartan Value Investors

Expanding Industry: Financial services, investment advisory

Location: Birmingham, AL

of jobs announced in 2014: 4

Capital investment: \$1,900,000

Headquarters: Birmingham, AL

Website: www.spartanvalueinvestors.com

NAICS: 523930



Currently, Spartan Value Investors' investment portfolio consists primarily of distressed residential housing. Over 50 percent of its assets are allocated in the "Residential Resell" strategy where it purchases, renovates and resells distressed residential housing.



SPOC Automation Inc.

Expanding Industry: Manufacturing, relay and industrial control
Location: Trussville, AL
of jobs announced in 2014: 35
Capital investment: \$2,000,000
Headquarters: Trussville, AL
Website: www.spocautomation.com
NAICS: 335314



SPOC Automation builds world-class variable frequency drive (VFD) solutions for the oil and gas industry. SPOC engineers and packages artificial lift controls and automation technology that increases oil and gas production, lowers lifting costs and saves energy. As the largest independent artificial lift controls manufacturer in North America, SPOC applies decades of automation experience to equipment and processes to make products that help our customers produce more and spend less.

STERIS®



STERIS Corp. (IMS)

Expanding Industry: Manufacturing, medical instruments
Location: Birmingham, AL
of jobs announced in 2014: 100
Capital investment: \$10,063,000
Headquarters: Mentor, OH
Website: www.imsready.com
NAICS: 339112



STERIS is the world's pre-eminent infection prevention, decontamination, and surgical and critical care company, with a long list of first-to-market products and industry-leading service innovations and thousands of customers in more than 60 countries. Through a series of strategic acquisitions and continual innovation of new products, STERIS holds one of the broadest portfolios of products in the industry. It stands at the forefront of efforts to prevent infection and contamination in health care and pharmaceutical environments, and is broadening its reach with products to meet the needs of defense and industrial markets.



Technical Knock Out

Expanding Industry: IT, computer and electronic recycling
Location: Homewood, AL
of jobs announced in 2014: 2
Headquarters: Birmingham, AL
Website: www.technicalko.net
NAICS: 541511



Technical Knock Out specializes in the reclamation of electronics devices, with the exception of televisions. This includes computers and their components, copiers, scanners, telephones, cell phones and battery back-ups, as well as household items such as microwaves, washers, dryers, etc.



State Farm Insurance Companies

Expanding Industry: Insurance, Birmingham Operation Center
Location: Homewood, AL
of jobs announced in 2014: 238
Headquarters: Bloomington, IL
Website: www.statefarm.com
NAICS: 524298



State Farm is a group of insurance and financial services companies in the United States. The company also has operations in Canada.



Swagelok Alabama

Expanding Industry: Distribution, fluid system components
Location: Hoover, AL
Capital investment: \$3,500,000
Headquarters: Solon, Ohio
Website: www.swagelok.com
NAICS: 423830



Swagelok Company is a global developer and provider of high-quality and reliable fluid system solutions including products, assemblies and services for the research, instrumentation, process, oil and gas, power, petrochemical, alternative fuels, and semiconductor industries.



Temenos Group AG

New Industry: IT, software
Location: Hoover, AL
of jobs announced in 2014: 49
Capital investment: \$3,000,000
Headquarters: Geneva, Switzerland
Website: www.temenos.com
NAICS: 541511



Temenos works to rid the banking industry of its legacy software. It has invested more than \$1 billion in developing great banking solutions and grown its product set from core banking to payments, wealth management, business analytics and channels, offering a comprehensive solution set to meet the industry's needs. It has developed the largest network of partners in the industry to enable it to scale delivery, and Temenos has more than 1,600 installations in over 150 countries.



The Von Corp.

Expanding Industry: Manufacturing, high voltage electric equipment
Location: Birmingham, AL
of jobs announced in 2014: 2
Headquarters: Birmingham, AL
Website: www.voncorp.com
NAICS: 551114



The VON Corp. manufactures high-voltage electric equipment and provides underground cable fault locating and high voltage testing.



T-Mobile Birmingham Financial Care Call Center

Expanding Industry: Telecommunications, cellular service - back office
Location: Hoover, AL
of jobs announced in 2014: 100
Headquarters: Bellevue, WA
Website: www.t-mobile.com
NAICS: 561422



Back-office call center.



Unipres Alabama

New Industry: Manufacturing, automotive parts
Location: Steele, AL
Headquarters: Yokohama City, Japan
Website: www.unipres.com
NAICS: 336370



Unipres U.S.A. Inc. produces premium quality parts for the auto industry. Its capabilities include stamping; machining and assembly of metal parts for the main portions of automotive body structures; pressing molded components and precision automatic transmission parts; and helping customers create new parts. Our parent company, Unipres Corporation, has supplied Japanese auto and appliance makers for more than 50 years.



Valmont Industries Inc.

Expanding Industry: Manufacturing, hot dip galvanizing
Location: Ashville, AL
of jobs announced in 2014: 7
Capital investment: \$2,300,000
Headquarters: Valley, NB
Website: www.valmont.com
NAICS: 332812



Valmont Coatings is a global market and technical leader in Hot Dip Galvanizing. Its 30 galvanizing facilities, strategically positioned around the world, are combined with additional locations that offer Powder Coating, Anodizing, E-Coating and Liquid Painting services.



Viva Health Inc.

Expanding Industry: Insurance, corporate headquarters
Location: Birmingham, AL
of jobs announced in 2014: 240
Headquarters: Birmingham, AL
Website: www.vivahealth.com
NAICS: 551114



Viva Health Inc. is a health maintenance organization providing quality, accessible health care, and is also part of the renowned University of Alabama at Birmingham (UAB) Health System. Viva Health Administration LLC, is its sister company offering third party administration (TPA) services.



Vulcan Industries

Expanding Industry: Manufacturing, custom store displays
Location: Moody, AL
of jobs announced in 2014: 7
Capital investment: \$5,124,000
Headquarters: Birmingham, AL
Website: www.vulcanind.com
NAICS: 337215



Vulcan Industries provides merchandising display solutions to a diverse customer base of retailers and brand marketers. Through offices across the U.S. with domestic and international manufacturing capabilities, it offers expertise in concepting, designing, engineering, manufacturing, project management, and logistics. It also provides custom merchandising solutions in multiple mediums, from design to delivery.



West Frasier Lumber

Expanding Industry: Manufacturing, lumber

Location: Maplesville, AL

Capital investment: \$50,000,000

Headquarters: Vancouver, Canada

Website: www.westfraser.com

NAICS: 321113



An integrated North American wood products company, West Fraser operates 40 mills across Western Canada and the southern United States. The company's main product is lumber and southern yellow pine. West Fraser also produces panels, pulp, newsprint and wood chips.



YP/LM Berry Co.

Expanding Industry: IT, web applications

Location: Birmingham, AL

of jobs announced in 2014: 165

Capital investment: \$1,700,000

Headquarters: Tucker, GA

Website: www.yellowpages.com

NAICS: 541511



YP is a leading local marketing solutions provider dedicated to helping local businesses and communities grow. YP's flagship consumer brands include the popular YP app and YP.com, which are used by more than 80 million visitors each month in the U.S. and The Real Yellow Pages directory.

2014 OTHER NEW & EXPANDING PROFILES



GRANDVIEW MEDICAL CENTER

Grandview Medical Center

Expanding Industry: Health care services

Location: Birmingham, AL

Capital investment: \$107,000,000

Headquarters: Franklin, TN

Website: www.grandviewhealth.com

NAICS: 621910



Grandview Medical Center is a healing environment designed and built with the patient experience in mind. Medical teams are dedicated to clinical excellence and compassionate care.



One Nineteen

St. Vincent's 119

Expanding Industry: Health care, personal services

Location: Birmingham, AL

Capital investment: \$16,000,000

Headquarters: Hoover, AL

Website: www.onenineteen.com

NAICS: 713940



St. Vincent's One Nineteen is part of the St. Vincent's Health System and provides diagnostic imaging, physical therapy, fitness, spa and wellness services.



Samford University

Expanding Industry: Education, post-secondary

Location: Homewood, AL

Capital investment: \$10,110,284

of jobs announced in 2014: 27

Headquarters: Homewood, AL

Website: www.samford.edu

NAICS: 611310



Samford University is a private, coeducational university located in Homewood and founded in 1841.

Annual Average Labor Force

MSA	2001	2010	2011	2012	2013	01-10	10-13
Atlanta, GA	2,422,668	2,669,546	2,692,586	2,718,030	2,726,160	10.2%	2.1%
Austin, TX	749,966	922,499	946,507	970,434	1,005,336	23.0%	9.0%
Birmingham, AL	532,014	527,958	534,591	532,663	527,638	-0.8%	-0.1%
Charlotte, NC	751,465	888,693	900,846	919,600	925,101	18.3%	4.1%
Huntsville, AL	184,810	211,948	214,756	213,337	212,194	14.7%	0.1%
Louisville, KY	602,873	632,148	632,613	635,103	641,018	4.9%	1.4%
Memphis, TN	593,101	613,176	618,245	612,538	603,546	3.4%	-1.6%
Mobile, AL	185,365	190,790	191,910	186,841	183,177	2.9%	-4.0%
Montgomery, AL	164,983	171,755	170,549	168,637	166,692	4.1%	-2.9%
Nashville, TN	717,411	821,886	839,383	845,077	848,074	14.6%	3.2%
Oklahoma City, OK	561,150	576,315	582,696	590,853	605,187	2.7%	5.0%
Raleigh, NC	465,135	576,757	586,243	602,878	609,754	24.0%	5.7%
Alabama	2,134,845	2,178,219	2,189,650	2,163,035	2,138,048	2.0%	-1.8%
United States	143,734,000	153,889,000	153,617,000	154,975,000	155,389,000	7.1%	1.0%

Source: U.S. Bureau of Labor Statistics, Population 16 and above, place of residence, Feb 23, 2015

Real Gross Domestic Product

MSA	2001	2010	2011	2012	2013	01-10	10-13
Atlanta, GA	\$254,604	\$274,941	\$278,326	\$282,468	\$288,175	8.0%	4.8%
Austin, TX	\$59,931	\$86,546	\$90,380	\$96,035	\$98,126	44.4%	13.4%
Birmingham, AL	\$50,883	\$52,058	\$53,866	\$56,354	\$55,913	2.3%	7.4%
Charlotte, NC	\$92,934	\$115,229	\$120,092	\$125,714	\$130,318	24.0%	13.1%
Huntsville, AL	\$14,101	\$21,147	\$21,339	\$21,509	\$21,645	50.0%	2.4%
Louisville, KY	\$52,813	\$57,819	\$58,886	\$60,725	\$60,649	9.5%	4.9%
Memphis, TN	\$60,404	\$61,731	\$61,885	\$63,160	\$63,081	2.2%	2.2%
Mobile, AL	\$13,572	\$16,443	\$16,519	\$16,602	\$17,085	21.2%	3.9%
Montgomery, AL	\$13,846	\$15,289	\$15,398	\$15,449	\$15,489	10.4%	1.3%
Nashville, TN	\$68,824	\$84,572	\$88,170	\$93,360	\$95,124	22.9%	12.5%
Oklahoma City, OK	\$46,805	\$57,856	\$60,281	\$62,780	\$65,246	23.6%	12.8%
Raleigh, NC	\$43,992	\$58,938	\$59,036	\$60,260	\$62,758	34.0%	6.5%
Alabama	\$150,363	\$172,998	\$175,159	\$179,312	\$180,727	15.1%	4.5%
United States	\$12,682,200	\$14,783,800	\$15,020,600	\$15,369,200	\$15,710,300	16.6%	6.3%

Source: U.S. Bureau of Economic Analysis, Feb 24, 2015

Annual Average Employment

MSA	2001	2010	2011	2012	2013	2014	01-10	10-14
Atlanta, GA	2,310,500	2,275,600	2,311,200	2,353,600	2,413,400	2,501,600	-1.5%	9.9%
Austin, TX	680,600	779,900	806,300	838,600	878,100	914,200	14.6%	17.2%
Birmingham, AL	516,100	491,800	493,600	501,700	507,100	511,300	-4.7%	4.0%
Charlotte, NC	925,100	953,600	975,700	1,003,300	1,028,600	1,064,900	3.1%	11.7%
Huntsville, AL	186,200	208,600	208,600	210,400	214,100	215,800	12.0%	3.5%
Louisville, KY	599,100	580,300	585,100	599,500	614,000	627,900	-3.1%	8.2%
Memphis, TN	620,300	592,300	595,500	603,600	608,800	614,800	-4.5%	3.8%
Mobile, AL	178,800	175,000	174,600	173,000	173,300	174,900	-2.1%	-0.1%
Montgomery, AL	167,300	166,800	165,200	166,600	167,900	168,900	-0.3%	1.3%
Nashville, TN	728,400	762,500	786,100	816,400	846,100	876,400	4.7%	14.9%
Oklahoma City, OK	551,000	566,900	580,100	594,200	608,000	617,700	2.9%	9.0%
Raleigh, NC	441,200	500,100	509,600	525,500	540,400	559,700	13.3%	11.9%
Alabama	1,908,700	1,870,800	1,870,000	1,885,100	1,902,600	1,923,200	-2.0%	2.8%
United States	132,074,000	130,275,000	131,842,000	134,104,000	136,393,000	139,042,000	-1.4%	6.7%

Source: U.S. Bureau of Labor Statistics, March 18, 2015

APPENDIX

Per Capita Personal Income

MSA	2001	2010	2011	2012	2013	01-10	10-13
Atlanta, GA	\$34,501	\$37,493	\$39,826	\$40,738	\$41,307	8.7%	10.2%
Austin, TX	\$32,720	\$39,010	\$41,641	\$44,517	\$44,760	19.2%	14.7%
Birmingham, AL	\$30,341	\$38,556	\$40,262	\$42,124	\$42,570	27.1%	10.4%
Charlotte, NC	\$31,535	\$37,307	\$38,758	\$41,436	\$41,645	18.3%	11.6%
Huntsville, AL	\$28,983	\$39,574	\$41,054	\$41,588	\$41,899	36.5%	5.9%
Louisville, KY	\$31,225	\$37,561	\$39,094	\$41,404	\$41,477	20.3%	10.4%
Memphis, TN	\$31,399	\$36,931	\$38,552	\$40,630	\$40,987	17.6%	11.0%
Mobile, AL	\$22,815	\$31,333	\$32,622	\$32,631	\$32,843	37.3%	4.8%
Montgomery, AL	\$27,936	\$36,263	\$37,189	\$37,694	\$38,419	29.8%	5.9%
Nashville, TN	\$32,600	\$40,571	\$42,494	\$45,207	\$45,759	24.5%	12.8%
Oklahoma City, OK	\$29,126	\$38,261	\$41,673	\$43,843	\$44,280	31.4%	15.7%
Raleigh, NC	\$35,088	\$40,298	\$41,016	\$43,667	\$43,947	14.8%	9.1%
Alabama	\$25,547	\$33,894	\$35,010	\$35,942	\$36,481	32.7%	7.6%
United States	\$31,524	\$40,144	\$42,332	\$44,200	\$44,765	27.3%	11.5%

Source: U.S. Bureau of Economic Analysis, Feb 23, 2015

Construction Investment (\$millions)

MSA	2008	2010	2011	2012	2013	2014	08-10	10-14
Atlanta, GA	\$10,846,305,000	\$5,004,284,000	\$5,801,305,000	\$5,965,089,000	\$9,187,347,000	\$11,797,236,000	-53.9%	135.7%
Austin, TX	\$4,853,426,000	\$3,902,577,000	\$3,765,039,000	\$4,285,689,000	\$5,277,325,000	\$6,419,426,000	-19.6%	64.5%
Birmingham, AL	\$1,780,655,000	\$1,318,511,000	\$1,383,612,000	\$1,205,764,000	\$1,478,907,000	\$1,927,875,000	-26.0%	46.2%
Charlotte, NC	\$4,450,676,000	\$2,423,096,000	\$2,967,739,000	\$3,434,442,000	\$4,265,122,000	\$4,592,915,000	-45.6%	89.5%
Huntsville, AL	\$1,076,874,000	\$846,119,000	\$717,014,000	\$880,756,000	\$791,478,000	\$851,448,000	-21.4%	0.6%
Louisville, KY	\$1,874,599,000	\$1,264,012,000	\$1,459,487,000	\$2,076,371,000	\$4,108,135,000	\$1,801,330,000	-32.6%	42.5%
Memphis, TN	\$2,140,051,000	\$1,447,823,000	\$1,553,381,000	\$2,129,003,000	\$1,953,941,000	\$1,953,879,000	-32.3%	35.0%
Mobile, AL	\$4,523,378,000	\$1,418,612,000	\$582,459,000	\$453,863,000	\$638,126,000	\$468,106,000	-68.6%	-67.0%
Montgomery, AL	\$798,991,000	\$435,619,000	\$481,596,000	\$517,256,000	\$502,255,000	\$400,870,000	-45.5%	-8.0%
Nashville, TN	\$3,673,876,000	\$3,023,755,000	\$2,567,783,000	\$3,208,365,000	\$3,948,270,000	\$4,982,598,000	-17.7%	64.8%
Oklahoma City, OK	\$2,292,804,000	\$2,118,911,000	\$1,906,569,000	\$2,993,023,000	\$2,940,151,000	\$3,435,493,000	-7.6%	62.1%
Raleigh, NC	\$2,995,341,000	\$2,634,416,000	\$2,216,403,000	\$2,918,141,000	\$3,396,199,000	\$3,138,723,000	-12.0%	19.1%
Alabama	\$12,226,472,000	\$6,811,371,000	\$6,047,368,000	\$6,463,784,000	\$6,489,783,000	\$6,467,691,000	-44.3%	-5.0%
United States	\$556,688,000,000	\$433,697,000,000	\$443,772,000,000	\$490,305,000,000	\$536,442,000,000	\$581,508,000,000	-22.1%	34.1%

Source: McGraw Hill Construction, Research and Analytics, April 1, 2015

National Institutes of Health (NIH Grant), Awards by Metropolitan Area

MSA	2001	2010	2011	2012	2013	2014	01-10	10-14
Atlanta, GA	\$298,406,128	\$365,630,977	\$375,761,953	\$373,496,482	\$361,122,784	\$389,726,054	22.5%	6.6%
Austin, TX	\$56,951,498	\$63,479,249	\$69,456,113	\$65,965,086	\$63,963,635	\$68,664,613	11.5%	8.2%
Birmingham, AL	\$272,129,366	\$240,284,496	\$235,302,579	\$220,503,179	\$197,984,306	\$246,184,876	-11.7%	2.5%
Charlotte, NC	\$5,427,093	\$3,401,433	\$2,149,376	\$7,024,506	\$9,146,509	\$8,352,760	-37.3%	145.6%
Huntsville, AL	\$2,011,229	\$7,162,044	\$7,571,406	\$10,106,324	\$11,090,543	\$6,198,490	256.1%	-13.5%
Louisville, KY	\$78,540,883	\$51,580,408	\$60,512,633	\$64,950,512	\$56,829,509	\$55,663,567	-34.3%	7.9%
Memphis, TN	\$114,458,944	\$103,704,741	\$106,880,123	\$105,868,635	\$104,038,234	\$117,796,468	-9.4%	13.6%
Mobile, AL	\$11,702,513	\$10,642,586	\$10,216,441	\$12,462,512	\$8,981,444	\$9,142,301	-9.1%	-14.1%
Montgomery, AL	\$1,414,518	\$338,288	\$220,435	\$281,548	\$361,468	\$576,901	-76.1%	70.5%
Nashville, TN	\$300,620,003	\$356,382,478	\$355,776,085	\$358,832,770	\$337,692,528	\$330,819,643	18.5%	-7.2%
Oklahoma City, OK	\$76,326,262	\$74,750,707	\$76,183,262	\$79,537,467	\$80,559,446	\$80,359,693	-2.1%	7.5%
Raleigh - Durham, NC*	\$901,308,390	\$913,476,965	\$929,429,806	\$909,093,700	\$901,447,010	\$963,566,701	1.4%	5.5%
(Durham, NC)	\$847,398,794	\$891,984,016	\$886,219,884	\$880,308,332	\$878,455,746	\$943,540,446	5.3%	5.8%
Alabama	\$296,963,877	\$271,922,743	\$268,486,551	\$253,111,519	\$228,361,926	\$273,600,407	-8.4%	0.6%
United States	\$15,562,790,181	\$24,095,133,093	\$23,699,348,435	\$23,533,481,196	\$22,238,475,219	\$22,970,771,271	54.8%	-4.7%

Source: U.S. Department of Health and Human Services, Feb 27, 2015

* Durham is a separate metropolitan area from Raleigh; however, due to the unique location attributes of the Research Triangle, Durham and Raleigh's NIH Awards were combined

National Science Foundation Total Research and Development Expenditures, Awards by Metropolitan Area

MSA	2004	2010	2011	2012	2013	01-10	10-13
Atlanta, GA	\$837,565,000	\$1,280,561,000	\$1,353,961,000	\$1,410,863,000	\$1,484,142,000	52.9%	15.9%
Austin, TX	\$392,843,000	\$620,062,000	\$747,992,000	\$746,941,000	\$679,225,000	57.8%	9.5%
Birmingham, AL	\$311,746,000	\$489,845,000	\$503,698,000	\$453,779,000	\$443,590,000	57.1%	-9.4%
Charlotte, NC	\$19,519,000	\$33,307,000	\$29,510,000	\$26,541,000	\$27,101,000	70.6%	-18.6%
Huntsville, AL	\$67,663,000	\$106,180,000	\$107,787,000	\$120,424,000	\$131,900,000	56.9%	24.2%
Louisville, KY	\$119,156,000	\$189,090,000	\$197,638,000	\$196,842,000	\$186,772,000	58.7%	-1.2%
Memphis, TN	\$61,473,000	\$132,933,000	\$131,125,000	\$128,948,000	\$120,043,000	116.2%	-9.7%
Mobile, AL	\$20,096,000	\$35,500,000	\$42,233,000	\$40,172,000	\$40,590,000	76.7%	14.3%
Montgomery, AL	\$1,688,000	\$13,691,000	\$13,089,000	\$13,607,000	\$1,927,000	711.1%	-85.9%
Nashville, TN	\$373,543,000	\$556,885,000	\$618,372,000	\$612,630,000	\$632,453,000	49.1%	13.6%
Oklahoma City, OK	\$171,765,000	\$226,351,000	\$257,666,000	\$248,844,000	\$264,075,000	31.8%	16.7%
Raleigh - Durham, NC*	\$1,240,432,000	\$2,109,254,000	\$2,281,224,000	\$2,314,002,000	\$2,392,275,000	70.0%	13.4%
(Durham, NC)	\$947,712,000	\$1,745,443,000	\$1,900,877,000	\$1,907,589,000	\$1,974,807,000	84.2%	13.1%
Alabama	\$576,020,000	\$846,674,000	\$900,577,000	\$832,871,000	\$841,829,000	47.0%	-0.6%
United States	\$44,838,918,000	\$61,257,398,000	\$65,282,162,000	\$65,744,254,000	\$67,041,154,000	36.6%	9.4%

Source: National Science Foundation, March 16, 2015

* Durham is a separate metropolitan area from Raleigh; however, due to the unique location attributes of the Research Triangle, Durham and Raleigh's NSF expenditures were combined

Merchandise Export Totals by Metropolitan Area

MSA	2005	2010	2011	2012	2013	05-10	10-13
Atlanta, GA	\$11,063,036,735	\$15,009,697,170	\$17,229,096,733	\$18,169,075,027	\$18,827,866,222	35.7%	25.4%
Austin, TX	\$7,686,971,490	\$8,867,750,211	\$8,626,302,975	\$8,976,611,543	\$8,870,843,552	15.4%	0.0%
Birmingham, AL	\$796,241,450	\$1,687,778,234	\$2,383,254,089	\$1,939,217,017	\$1,865,268,570	112.0%	10.5%
Charlotte, NC	\$4,120,611,533	\$5,424,621,748	\$6,253,264,614	\$6,322,573,413	\$10,684,090,857	31.6%	97.0%
Huntsville, AL	\$1,104,774,745	\$986,821,859	\$1,293,323,257	\$1,491,533,592	\$1,518,688,622	-10.7%	53.9%
Louisville, KY	\$3,724,252,689	\$6,187,772,288	\$6,756,598,827	\$7,706,746,680	\$8,898,005,116	66.1%	43.8%
Memphis, TN	\$6,281,236,311	\$11,069,053,034	\$11,978,609,340	\$11,360,128,193	\$11,276,392,594	76.2%	1.9%
Mobile, AL	\$1,031,764,951	\$1,432,774,524	\$1,705,811,701	\$1,901,894,357	\$1,549,526,091	38.9%	8.1%
Montgomery, AL	\$817,829,627	\$1,520,136,752	\$1,647,286,509	\$1,770,151,074	\$1,673,075,727	85.9%	10.1%
Nashville, TN	\$5,020,576,960	\$5,748,505,522	\$5,878,661,947	\$6,402,109,822	\$8,702,830,825	14.5%	51.4%
Oklahoma City, OK	\$1,004,339,946	\$1,196,128,101	\$1,592,772,677	\$1,574,562,133	\$1,581,677,740	19.1%	32.2%
Raleigh, NC	\$974,832,168	\$1,912,390,725	\$2,254,387,295	\$2,308,052,342	\$2,280,555,122	96.2%	19.3%
Alabama	\$10,879,227,812	\$15,495,257,436	\$17,927,675,723	\$19,577,447,019	\$19,291,040,986	42.4%	24.5%
United States	\$901,081,812,545	\$1,278,494,525,839	\$1,482,507,755,226	\$1,545,703,253,743	\$1,579,592,865,783	41.9%	23.6%

Source: International Trade Administration March 12, 2015

APPENDIX

Population Age 25 or Older with Bachelor's Degree, Associate's Degree or High School Diploma

MSA	2005	2010	2011	2012	2013	05-10	10-13
Atlanta, GA							
Bachelor's Degree	1,065,184	1,161,379	1,193,064	1,243,122	1,259,961	9.0%	8.5%
Percentage Attainment	34.3%	34.1%	34.5%	35.3%	35.2%		
Associates Degree	197,365	237,296	232,227	247,379	264,488	20.2%	11.5%
Percentage Attainment	6.4%	7.0%	6.7%	7.0%	7.4%		
High School Diploma	2,691,945	2,977,435	3,008,695	3,091,638	3,159,981	10.6%	6.1%
Percentage Attainment	86.7%	87.5%	87.1%	87.8%	88.2%		
Austin, TX							
Bachelor's Degree	349,078	429,163	460,526	477,058	506,645	22.9%	18.1%
Percentage Attainment	39.1%	39.4%	40.6%	40.5%	41.5%		
Associates Degree	56,518	69,579	77,527	77,177	77,344	23.1%	11.2%
Percentage Attainment	6.3%	6.4%	6.8%	6.6%	6.3%		
High School Diploma	777,087	953,550	998,131	1,037,099	1,082,374	22.7%	13.5%
Percentage Attainment	87.0%	87.5%	87.9%	88.1%	88.6%		
Birmingham, AL							
Bachelor's Degree	184,819	198,856	206,853	214,201	220,197	7.6%	10.7%
Percentage Attainment	25.9%	26.3%	27.0%	27.9%	28.6%		
Associates Degree	44,148	55,794	58,429	58,354	56,814	26.4%	1.8%
Percentage Attainment	6.2%	7.4%	7.6%	7.6%	7.4%		
High School Diploma	601,999	640,611	648,986	663,931	668,949	6.4%	4.4%
Percentage Attainment	84.4%	84.6%	84.8%	86.6%	87.0%		
Charlotte, NC							
Bachelor's Degree	295,487	370,330	391,173	401,116	493,736	25.3%	33.3%
Percentage Attainment	30.3%	32.2%	33.3%	33.4%	32.0%		
Associates Degree	83,635	91,138	96,317	97,902	125,127	9.0%	37.3%
Percentage Attainment	8.6%	7.9%	8.2%	8.2%	8.1%		
High School Diploma	833,109	993,516	1,028,443	1,050,929	1,341,229	19.3%	35.0%
Percentage Attainment	85.5%	86.3%	87.6%	87.6%	86.9%		
Huntsville, AL							
Bachelor's Degree	86,347	95,899	93,287	106,764	106,851	11.1%	11.4%
Percentage Attainment	35.9%	34.4%	32.8%	36.9%	36.5%		
Associates Degree	15,353	19,982	21,552	19,721	26,024	30.2%	30.2%
Percentage Attainment	6.4%	7.2%	7.6%	6.8%	8.9%		
High School Diploma	206,555	241,722	251,964	258,455	259,623	17.0%	7.4%
Percentage Attainment	85.9%	86.7%	88.5%	89.3%	88.8%		
Louisville, KY							
Bachelor's Degree	184,425	224,392	223,227	233,566	232,345	21.7%	3.5%
Percentage Attainment	23.3%	25.8%	25.5%	26.5%	27.0%		
Associates Degree	55,151	61,149	65,399	67,643	69,659	10.9%	13.9%
Percentage Attainment	7.0%	7.0%	7.5%	7.7%	8.0%		
High School Diploma	671,449	754,696	762,910	775,334	760,120	12.4%	0.7%
Percentage Attainment	84.8%	86.9%	87.2%	88.1%	88.3%		
Memphis, TN							
Bachelor's Degree	185,823	209,987	224,139	222,813	227,642	13.0%	8.4%
Percentage Attainment	23.7%	25.1%	26.5%	26.1%	26.4%		
Associates Degree	50,201	60,049	50,393	60,569	59,182	19.6%	-1.4%
Percentage Attainment	6.4%	7.2%	6.0%	7.1%	6.9%		
High School Diploma	657,290	717,590	728,419	735,214	736,857	9.2%	2.7%
Percentage Attainment	84.0%	85.6%	86.2%	86.2%	86.2%		

Source: U.S. Census Bureau, American Community Survey, Feb 23, 2015

Note: ACS annual average data was not available until 2005

Population Age 25 or Older with Bachelor's Degree, Associate's Degree or High School Diploma

MSA	2005	2010	2011	2012	2013	05-10	10-13
Mobile, AL							
Bachelor's Degree	52,264	56,517	54,535	58,276	60,796	8.1%	7.6%
Percentage Attainment	20.7%	21.0%	20.2%	21.5%	22.3%		
Associates Degree	17,068	20,250	19,935	20,328	24,577	18.6%	21.4%
Percentage Attainment	6.8%	7.5%	7.4%	7.5%	9.0%		
High School Diploma	208,883	223,512	225,581	229,758	234,322	7.0%	4.8%
Percentage Attainment	82.7%	83.1%	83.8%	84.7%	85.8%		
Montgomery, AL							
Bachelor's Degree	58,519	67,147	65,141	65,802	63,509	14.7%	-5.4%
Percentage Attainment	26.9%	27.6%	26.6%	26.8%	25.9%		
Associates Degree	12,195	14,171	17,664	18,104	15,794	16.2%	11.5%
Percentage Attainment	5.6%	5.8%	7.2%	7.4%	6.4%		
High School Diploma	180,681	206,156	207,504	212,492	210,310	14.1%	2.0%
Percentage Attainment	83.1%	84.6%	84.6%	86.5%			
Nashville, TN							
Bachelor's Degree	261,059	311,696	329,028	355,630	376,236	19.4%	20.7%
Percentage Attainment	28.3%	29.7%	30.6%	32.6%	32.3%		
Associates Degree	54,198	70,830	64,931	66,260	78,154	30.7%	10.3%
Percentage Attainment	5.9%	6.7%	6.0%	6.1%	6.7%		
High School Diploma	833,460	903,376	938,229	962,116	1,027,872	8.4%	13.8%
Percentage Attainment	84.6%	86.0%	87.4%	88.2%	88.2%		
Oklahoma City, OK							
Bachelor's Degree	197,141	223,506	232,650	237,329	237,295	13.4%	6.2%
Percentage Attainment	27.0%	27.6%	28.2%	28.4%	27.9%		
Associates Degree	47,849	50,428	52,003	59,258	58,805	5.4%	16.6%
Percentage Attainment	6.5%	6.2%	6.3%	7.1%	6.9%		
High School Diploma	630,995	708,511	721,143	733,231	739,433	12.3%	4.4%
Percentage Attainment	86.4%	87.5%	87.5%	87.7%	86.8%		
Raleigh, NC							
Bachelor's Degree	249,805	301,012	311,789	324,318	346,472	20.5%	15.1%
Percentage Attainment	41.7%	41.0%	41.3%	42.0%	43.7%		
Associates Degree	49,267	67,070	65,417	67,137	66,235	36.1%	-1.2%
Percentage Attainment	8.2%	9.1%	8.7%	8.7%	8.4%		
High School Diploma	535,957	666,824	669,572	694,322	713,408	24.4%	7.0%
Percentage Attainment	89.4%	90.9%	88.7%	89.9%	90.0%		
Alabama							
Bachelor's Degree	630,608	692,695	710,532	747,159	756,953	9.8%	9.3%
Percentage Attainment	21.4%	21.9%	22.3%	23.3%	23.5%		
Associates Degree	196,856	225,382	236,162	238,555	258,110	14.5%	14.5%
Percentage Attainment	6.7%	7.1%	7.4%	7.4%	8.0%		
High School Diploma	2,363,728	2,596,645	2,641,332	2,695,189	2,726,799	9.9%	5.0%
Percentage Attainment	80.3%	82.1%	82.7%	84.0%	84.5%		
U.S.							
Bachelor's Degree	51,366,830	57,578,042	58,890,813	60,742,522	62,466,383	12.1%	8.5%
Percentage Attainment	27.2%	28.2%	28.5%	29.1%	29.6%		
Associates Degree	13,960,054	15,553,106	16,016,175	16,611,110	17,006,372	11.4%	9.3%
Percentage Attainment	7.4%	7.6%	7.8%	8.0%	8.1%		
High School Diploma	159,168,430	174,825,918	177,382,365	180,249,230	182,642,389	9.8%	4.5%
Percentage Attainment	84.2%	85.6%	85.9%	86.4%	86.6%		

Source: U.S. Census Bureau, American Community Survey, Feb 23, 2015

Note: ACS annual average data was not available until 2005

Population Estimate

MSA	2001	2010	2011	2012	2013	2014	01-10	10-14
Atlanta, GA	4,428,049	5,304,207	5,374,825	5,456,472	5,525,432	5,614,323	19.8%	5.8%
Austin, TX	1,321,516	1,727,743	1,782,089	1,836,149	1,885,803	1,943,299	30.7%	12.5%
Birmingham, AL	1,059,082	1,129,034	1,131,010	1,134,297	1,139,556	1,143,772	6.6%	1.3%
Charlotte, NC	1,769,476	2,223,894	2,257,149	2,295,879	2,337,339	2,380,314	25.7%	7.0%
Huntsville, AL	348,453	419,418	425,248	430,231	435,997	441,086	20.4%	5.2%
Louisville, KY	1,132,204	1,237,778	1,244,938	1,251,870	1,262,244	1,269,702	9.3%	2.6%
Memphis, TN	1,224,627	1,326,580	1,332,790	1,340,755	1,341,710	1,343,230	8.3%	1.3%
Mobile, AL	400,129	413,432	413,154	413,955	414,560	415,123	3.3%	0.4%
Montgomery, AL	348,725	375,208	377,960	375,874	373,945	373,141	7.6%	-0.6%
Nashville, TN	1,409,191	1,675,913	1,698,288	1,727,153	1,758,577	1,792,649	18.9%	7.0%
Oklahoma City, OK	1,108,860	1,257,888	1,276,858	1,297,886	1,320,585	1,336,767	13.4%	6.3%
Raleigh, NC	833,100	1,137,346	1,163,203	1,189,075	1,215,299	1,242,974	36.5%	9.3%
Alabama	4,464,034	4,785,822	4,801,695	4,817,484	4,833,996	4,849,377	7.2%	1.0%
United States	285,081,556	309,347,057	311,721,632	314,112,078	316,497,531	318,857,056	8.5%	2.3%

Source: U.S. Census Bureau, March 27, 2015

Note: Estimates are based on 2013 metropolitan definitions as defined by the Office of Management and Budget (OMB)

Cost of Living Annual Average Composite Index

MSA	2007	2010	2011	2012	2013	2014
Atlanta	*	*	*	*	*	*
Atlanta	98.0	95.5	97.3	96.9	95.3	99.6
Fayette Co.	*	*	*	*	94.5	95.2
Marietta	*	94.7	96.7	98.5	99.8	96.8
Austin, TX	*	*	*	*	*	*
Austin	95.7	95.5	92.7	95.6	93.2	94.6
Round Rock	93.4	89.7	88.6	92.4	90.6	94.6
San Marcos	91.1	*	90.4	87.6	88.3	86.0
Birmingham	90.8	90.8	88.6	88.5	87.7	91.5
Charlotte	*	93.2	*	*	*	*
Charlotte	92.6	93.2	93.3	94.7	95.7	95.0
Gastonia	87.7	*	92.9	91.8	*	*
Huntsville	94.3	91.2	93.6	93.1	94.6	94.4
Louisville	96.7	87.6	91.7	90.8	91.4	91.9
Memphis	88.2	88.2	85.9	86.0	85.4	85.6
Mobile	93.1	92.7	92.0	93.2	91.6	92.6
Montgomery	97.2	99.2	97.3	95.8	94.7	94.7
Nashville	*	*	*	*	*	
Nashville, Franklin	88.1	88.9	90.2	88.9	91.2	90.2
Murfreesboro	92.5	88.1	88.2	90.2	87.6	
Oklahoma City	*	*	*	*	*	*
Oklahoma City	87.4	91.7	90.5	90.8	90.3	90.1
Edmond	88.5	91.6	92.5	95.2	95.4	95.9
Norman	*	94.4	91.5	85.6	83.8	83.7
Raleigh, NC	99.1	98.1	93.8	90.8	93.6	93.3
Alabama	*	*	*	*	*	*
United States	100.0	100.0	100.0	100.0	100.0	100.0

Source: C2ER, The Council for Community and Economic Research, Feb 27, 2015

At-Risk-Youth, Population 16 to 19 Years Old That are Not a High School Graduate, are Not in Labor Force, are Unemployed

MSA	2005	2010	2011	2012	2013	05-10	10-13
Atlanta, GA	13,154	14,609	14,294	11,692	12,494	11.1%	-14.5%
Austin, TX	3,671	2,664	3,763	2,454	3,113	-27.4%	16.9%
Birmingham, AL	2,885	3,585	3,388	2,864	2,095	24.3%	-41.6%
Charlotte, NC	3,437	4,540	3,946	1,337	1,946	32.1%	-57.1%
Huntsville, AL	885	993	1,429	334	808	12.2%	-18.6%
Louisville, KY	3,315	2,643	1,731	1,571	1,946	-20.3%	-26.4%
Memphis, TN	3,294	4,211	2,816	2,995	2,226	27.8%	-47.1%
Mobile, AL	945	2,540	1,963	1,815	1,317	168.8%	-48.1%
Montgomery, AL	766	1,327	2,027	1,189	897	73.2%	-32.4%
Nashville, TN	3,625	2,092	1,536	1,881	2,358	-42.3%	12.7%
Oklahoma City, OK	3,392	2,102	3,011	2,684	2,602	-38.0%	23.8%
Raleigh, NC	1,732	1,634	1,315	1,638	1,468	-5.7%	-10.2%
Alabama	13,962	16,313	14,843	12,306	10,663	16.8%	-34.6%
United States	665,518	717,276	639,031	565,675	524,201	7.8%	-26.9%

Source: U.S. Census Bureau, American Community Survey, March 17, 2015

Note: ACS annual average data was not available until 2005

Violent Crime Rate per 100,000 Inhabitants

MSA	2001	2010	2011	2012	2013	01-10 Average	10-13 Average
Atlanta, GA	570.1	413.8	400.9	408.6	389.1	500.3	403.1
Austin, TX	364.4	327.9	287.1	292.7	271.3	350.0	294.8
Birmingham, AL	556.1	*	524.2	565.1	529.8	563.0	539.7
Charlotte, NC	*	*	428.1	*	404.4	702.0	416.3
Huntsville, AL	395.4	398.0	501.9	521.5	483.5	452.7	476.2
Louisville, KY	405.2	395.2	419.0	425.3	*	411.9	413.2
Memphis, TN	1104.4	1006.8	980.4	1056.8	993.4	1128.4	1009.4
Mobile, AL	535.8	534.1	608.2	552.1	585.9	503.6	570.1
Montgomery, AL	581.4	341.3	297.9	352.8	*	464.7	330.7
Nashville, TN	970.9	643.2	650.8	665.9	596.1	826.7	639.0
Oklahoma City, OK	548.1	*	528.2	548.6	503.0	540.7	526.6
Raleigh, NC	497.7	242.6	243.3	247.0	219.3	363.7	238.1
Alabama	438.6	377.8	420.1	449.9	430.8	432.4	419.7
United States	504.5	404.5	387.1	387.8	367.9	465.3	386.8

Source: U.S. Federal Bureau of Investigations (FBI), Feb 24, 2015

NOTE: The asterisk denotes the year Violent Crime Rates are unavailable. The 2012 - 2013 Average Violent Crime Rates are calculated by summing the metropolitan Violent Crime Rate for each year (2012 and 2013) and dividing the sum by two.



2015 BBA EXECUTIVE COMMITTEE

William A. Bell Sr.
City of Birmingham

Neal Berte
President Emeritus,
Birmingham-Southern College

Robert O. Burton
Hoar Construction LLC

Leigh Collier
Wells Fargo

Judge Ralph D. Cook
City of Birmingham

Mark A. Crosswhite
Alabama Power Co.

Garry Neil Drummond
Drummond Co. Inc.

Ann D. Florie
Leadership Birmingham

George T. French Jr.
Miles College

Nancy C. Goedecke
Mayer Electric Supply

M. James Gorrie
Brasfield & Gorrie LLC

Jay Grinney
HealthSouth Corp.

O. B. Grayson Hall Jr.
Regions Financial Corp.

Herschell L. Hamilton
BLOC Global Group

Raymond J. Harbert
Harbert Management Corp.

Jason Hoff
Mercedes-Benz U.S.
International Inc.

Donald M. James
Vulcan Materials Co.

John D. Johns
Protective Life Corp.

Terry Kellogg
Blue Cross & Blue Shield
of Alabama

Sandy Killion
Vulcan Industrial
Contractors Co. LLC

James C. Lee III
Buffalo Rock Co.

Jesse J. Lewis Sr.
The Lewis Group

Don Logan
Birmingham Barons LLC

Fred McCallum
AT&T Alabama

John J. McMahon Jr.
Ligon Industries

James T. McManus II
Energen Corp.

C. Phillip McWane
McWane Inc.

Bill Morton
Robins & Morton

Claude B. Nielsen
Coca-Cola Bottling Co.
United Inc.

Henry Craft O'Neal
O'Neal Industries

Mike Oatridge
Honda Manufacturing
of Alabama LLC

Judge Nyya Parson-Hudson
City of Birmingham

Suzanne Sitherwood
The Laclede Group Inc.

Lee Smith Jr.
BBVA Compass Bancshares Inc.

W. Stancil Starnes
ProAssurance Corp.

Lee J. Styslinger III
Altec Industries Inc.

Michael D. Thompson
Thompson Tractor Co. Inc.

Senator J.T. "Jabo" Waggoner
Alabama Legislature

Ray L. Watts
University of Alabama
at Birmingham

Dontá L. Wilson
BB&T

2015 BBA BOARD OF DIRECTORS

- Leroy Abrahams**, Regions Bank
Charles Ash, EDPM Inc.
Johnathan Austin, Birmingham City Council*
Charles Ball Jr., Regional Planning Commission of Greater Birmingham*
Jeffrey A. Bayer, Bayer Properties LLC
Nelson S. Bean, First Commercial Bank
John G. Beard, Alacare Home Health & Hospice
William A. Bell, City of Birmingham
Neal Berte, Birmingham-Southern College
William A. Bowron Jr., Red Diamond Inc.
David Bowsher, Adams and Reese LLP
Tim Breen, Motion Industries Inc.
Thomas Brigham, ARC Realty
Brian Bucher, PNC Bank
Robert O. Burton, Hoar Construction LLC
Allen Caton, Chilton County Commission*
Leigh Collier, Wells Fargo
Ralph D. Cook, City of Birmingham
John H. Cooper, Sirote & Permutt PC
Mark A. Crosswhite, Alabama Power Co.
A. Fox deFuniak III, Cadence Bank
Al Denson, Birmingham Airport Authority*
David Dickson, SYSCO Food Services of Central Alabama
Walton C. Doster, Doster Construction Co. Inc.
Felix M. Drennen III, Cobbs Allen & Hall
Mark Drew, Maynard Cooper & Gale PC
Garry Neil Drummond, Drummond Co. Inc.
Alex Edgeworth, B.L. Harbert International LLC
David Fleming, REV Birmingham*
Ann D. Florie, Leadership Birmingham
George T. French Jr., Miles College
Will French, Dunn Investment Co.
Jonathan Geisen, Baker Donelson Bearman Caldwell & Berkowitz
David K. Germany, Regions Bank
Nancy C. Goedecke, Mayer Electric Supply
M. James Gorrie, Brasfield & Gorrie LLC
Keith Granger, Trinity Medical Center
Jerry Grant, National Association of Office and Industrial Properties*
Chris Green, Blount County Commission*
Steve Greenwalt, NCP Solutions
John B. "Beau" Grenier, Bradley Arant Boulton Cummings LLP
Michael Grim, Norfolk Southern Corp.
Jay Grinney, HealthSouth Corp.
O. B. Grayson Hall Jr., Regions Bank
Gene Hallman, Alabama Sports Foundation Inc.*
Herschell L. Hamilton, BLOC Global Group
Raymond J. Harbert, Harbert Management Corp.
Jason Hoff, Mercedes-Benz U.S. International Inc.
Scott Horne, Bright House Networks
Bill Horton, Regions Bank
Gary Ivey, City of Hoover*
Donald M. James, Vulcan Materials Co.
John D. Johns, Protective Life Corp.
Randall W. Jordan, Bryant Bank
Terry Kellogg, Blue Cross and Blue Shield of Alabama
James Kelly, Bibb County Commission*
Sandy Killion, Vulcan Industrial Contractors Co. LLC
Barbara J. Knight, Alabama Power Co.
Charles C. Krulak, Birmingham-Southern College
Dennis Lathem, Birmingham-Jefferson Convention Complex*
James C. Lee III, Buffalo Rock Co.
Jesse J. Lewis Sr., The Lewis Group
Timothy A. Lewis, TALA Professional Services
Bruce Limbaugh, Limbaugh Toyota
Don Logan, Birmingham Barons
Jim Lowery, Jefferson County Mayor's Association*
Marcus Lundy, Birmingham City Council*
David Luoma, Belk Inc.
Billy Luster, Walker County Commission*
Paul Manning, St. Clair County Commission*
Edgar B. Marx, Marx Brothers Inc.
Keri Till Massey, Protective Life Corp.
Fred McCallum, AT&T Alabama
Burton McDonald, BB&T
John J. McMahan Jr., Ligon Industries
James T. McManus II, Energen Corp.
C. Phillip McWane, McWane Inc.
Charles M. Miller Jr., Barber Cos. Inc.
Bill Morton, Robins & Morton
Claude B. Nielsen, Coca-Cola Bottling Co. United Inc.
Henry Craft O'Neal, O'Neal Industries
Mike Oatridge, Honda Manufacturing of Alabama LLC
Daniel Pahos, Home Instead Senior Care
Harlan Parrish, Aliant Bank
Keith Parrott, Baptist Health System
Nyya Parson-Hudson, City of Birmingham
Charles K. Porter, Porter White & Co. Inc.
Hernán Prado, Hola Latino
David Proctor, Burr & Forman LLP
William D. Ritter, Regions Bank
David Roberson, Environmental Guidance Corp.
John H. Roberts, Bhatte Environmental Associates Inc.
Alan T. Rogers, Balch & Bingham LLP
Brad Sandidge, Graham Commercial Properties
Matt Sharp, The Birmingham News/AL.com
Rick Shepherd, Shelby County Commission*
David Sher, AmSher Receivables Management
Robert A. Simon, Corporate Realty Associates Inc.
Sanjay Singh, Computer Technology Solutions Inc.
Thomas Sisson, Warren Averett LLC
Suzanne Sitherwood, The Laclede Group Inc.
Deborah Alley Smith, Christian & Small LLP
Hatton C.V. Smith, Royal Cup Inc.
Lee Smith Jr., BBVA Compass
Zeke Smith, Alabama Power Co.
James Smither, Greater Birmingham Convention & Visitors Bureau *
Steve Spencer, Alabama Power Co.
W. Stancil Starnes, ProAssurance
James A. Stephens, Jefferson County Commission*
John Stewart, University of Montevallo
Lee J. Styslinger III, Altec Industries Inc.
Michael D. Thompson, Thompson Tractor Co. Inc.
W. Lee Thuston, Burr & Forman LLP
T. Charles Tickle, Daniel Corp.
Mac Underwood, Birmingham Water Works
José Antonio Valencia, Valencia Ventures
Fernando Valentin, The Trinity Design Group LLC
Paul E. Vercher, U.S. Steel Corp.
J.T. "Jabo" Waggoner, Alabama Legislature
Perry W. Ward, Lawson State Community College
W. Michael Warren Jr., Children's of Alabama
Ray L. Watts, University of Alabama at Birmingham
Joel Welker, Birmingham Business Journal
Andrew Westmoreland, Samford University
Dontá L. Wilson, BB&T

* denotes Ex-Officio



Nan Baldwin
Vice President,
Regional
Development



Ryan Boswell
Graphic Designer



Laura Patterson
Boyles
Director, Investor
Relations



Mark Brown
Vice President,
Business Retention
and Expansion



Victor Brown
Vice President,
Minority Business
and Small Business
Development



Myla E. Calhoun
General Counsel
and Senior Vice
President, Regional
Development and
Public Policy



Steven Ceulemans
Vice President,
Innovation and
Technology



John Cook
Vice President,
Finance



Lauren Cooper
Vice President,
Communications



Rick Davis
Senior Vice
President, Economic
Development



Brian Hilson
President and CEO



Alison Howell
Vice President,
Public Policy



Waymond Jackson
Vice President,
Workforce
Development



Matt McKenzie
Director, Information
Technology



Suzanna McKinney
Manager, Public
Policy



Alan Reeves
Project Manager,
Economic
Development



Michael Shattuck
Director, Research



Brittney R. Smith
Manager, Talent
and Workforce
Development



Lisa Swanger
Administrative
Assistant, Billing
Clerk/Database
Management



Niki Anthony Tarver
Manager, Finance



Loren Traylor
Vice President,
Investor Relations



Jefferson Traywick
Senior Project
Manager, Economic
Development



Chris Williams
Account Executive,
Investor Relations



Tracy Woods
Administrative
Assistant

REGIONAL ACCOLADES



Birmingham is one of
America's Best Cities
for **Global Trade**

- November 2014



BIRMINGHAM ONE OF THE
Top 10
hottest housing
markets for 2014

CNNMoney

- JANUARY 2014



BIRMINGHAM ONE OF THE
Top 10
Cities for Banking

nerdwallet

- JANUARY 2014



BIRMINGHAM ONE OF THE
Top 10
Best Downtowns

LIVABILITY

- MARCH 2014



Top **10** **Happiest**
Cities To Work In

- January 2015



Birmingham ranked
America's Best City
for 2014

Good things come to those who wait.



And the wait is almost over.

A healing environment designed and built with the patient experience in mind.
Medical teams dedicated to clinical excellence and compassionate care.
Convenience and easy access to all the health services you need.



GRANDVIEW
MEDICAL CENTER

OPENING OCTOBER 2015

www.grandviewhealth.com