

MAKE IT YOURS
DESIGNED BY YOU,
FOR YOU

5704 N WILKINSON ROAD, PARADISE VALLEY, AZ

5704

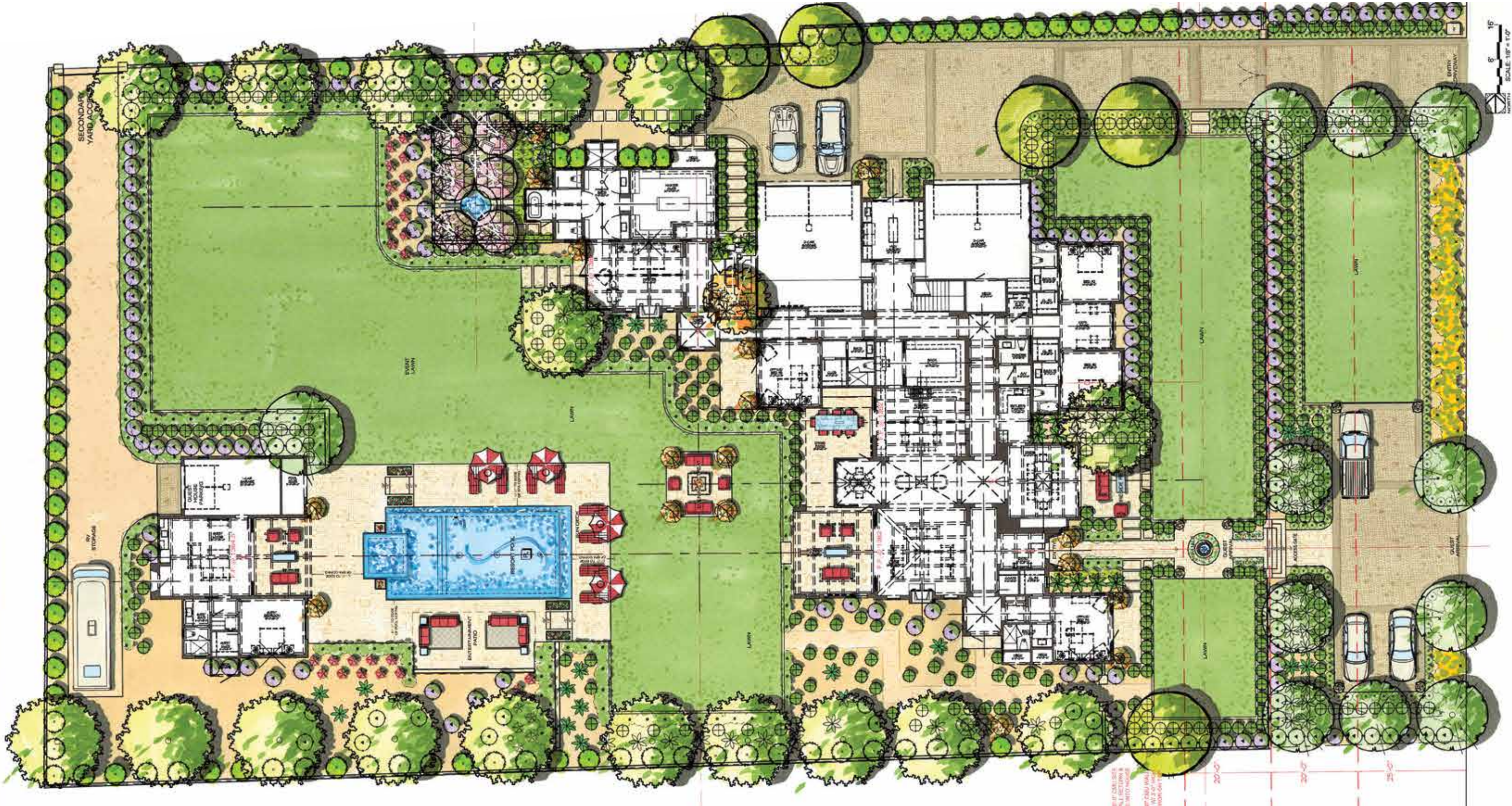
WITH A PREMIUM ADDRESS AT THE DOORSTEP OF PARADISE VALLEY'S FINE LIVING, 5704 WILKINSON IS A PRIVATE GATED ESTATE READY TO BE BUILT. WHERE EXCEPTIONAL QUALITY OF LIFE MINGLES WITH A FINE PROPERTY INVESTMENT. CAPTIVATING VIEWS OF BOTH CAMELBACK MOUNTAIN AND THE PRAYING MONK, PARADISE VALLEY'S CROWN JEWEL.

your way

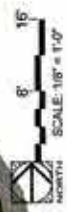
We create intelligent architecture and build with integrity to complement modern lifestyles and establish comfortable, yet sophisticated environments personally designed for each of our client's needs. From concept to completion, your partners--Candelaria Design and West Construction--will be there every step of the way.



SITE PLAN



IF YOU SEE THIS
IT MEANS
IT IS NOT TO BE
CONSIDERED
AS PART OF THE
DESIGN



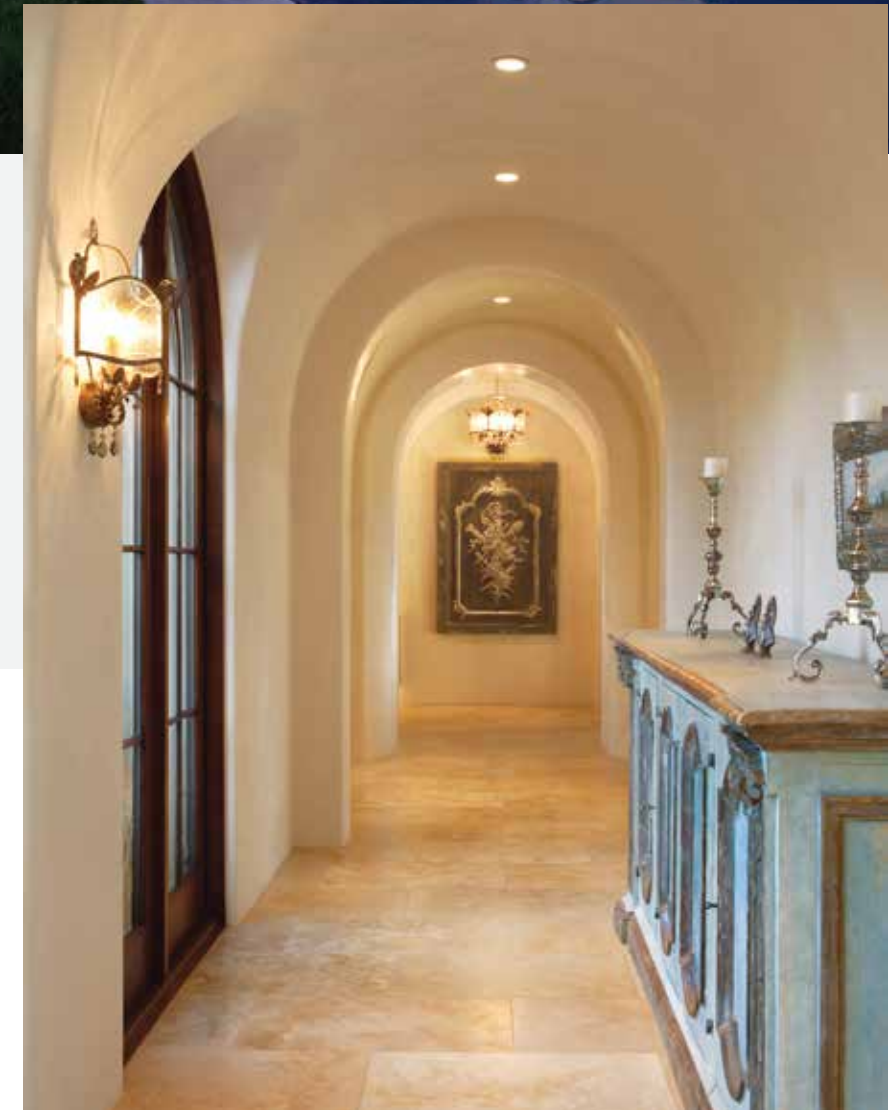


*classic
santa barbara*



A PLACE TO RISE AND SHINE. WHERE
INDOORS MEETS OUTDOORS.
DECADENTLY SPACIOUS.

From a project's inception, we keep clients up-to-date on their home progress through desktop and mobile applications that expedite collaborative input and allow real-time engagement through each stage of the architecture, construction, and design process.



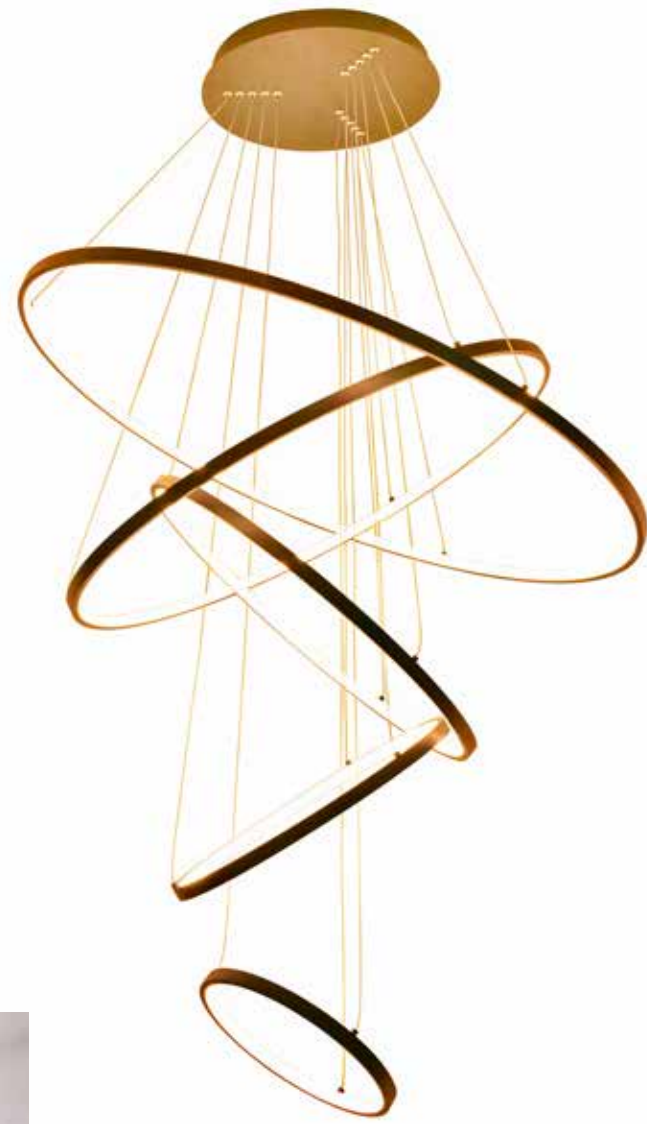


*sleek
contemporary*



A DEFINITE DESIGN STATEMENT.
LUXURY IS A DAILY AFFAIR.
FILLED WITH BESPOKE DETAILS.

West Construction creates spaces that honor each clients' lifestyle and vision. From function and flow to facades and finishes, we collaborate with our clients on the necessities and nuances of their dream home.





*modern
farmhouse*



AFFORDING THE ULTIMATE IN LUXURY LIVING.
REFLECTING TODAY'S LIFESTYLE.
LUSH GROUNDS AND ORANGE BLOSSOMS.

You will be able to tailor your own home around your needs, desires and lifestyle. We think your new home should offer a warm welcome with a proper 'threshold' moment, a front door that is reassuringly solid, a door handle that's a pleasure to touch and a fire at its heart.



Follow The Story

LUXLIVINGAZ.COM/5704-WILKINSON

We hope you enjoy looking through this brochure and that each page inspires you to dream, plan and imagine how fulfilling your life can be at 5704 Wilkinson in Paradise Valley.

Contact us today with any inquiries. Our team would be delighted to meet and create your vision.

Tricia Cormie 602.359.6988

Russ
Lyon



Sotheby's
INTERNATIONAL REALTY



CANDELARIA[®]
ARCHITECTURE + LIFESTYLE



enhancing your lifestyle
WWW.CANDELARIADESIGN.COM
800.808.0001