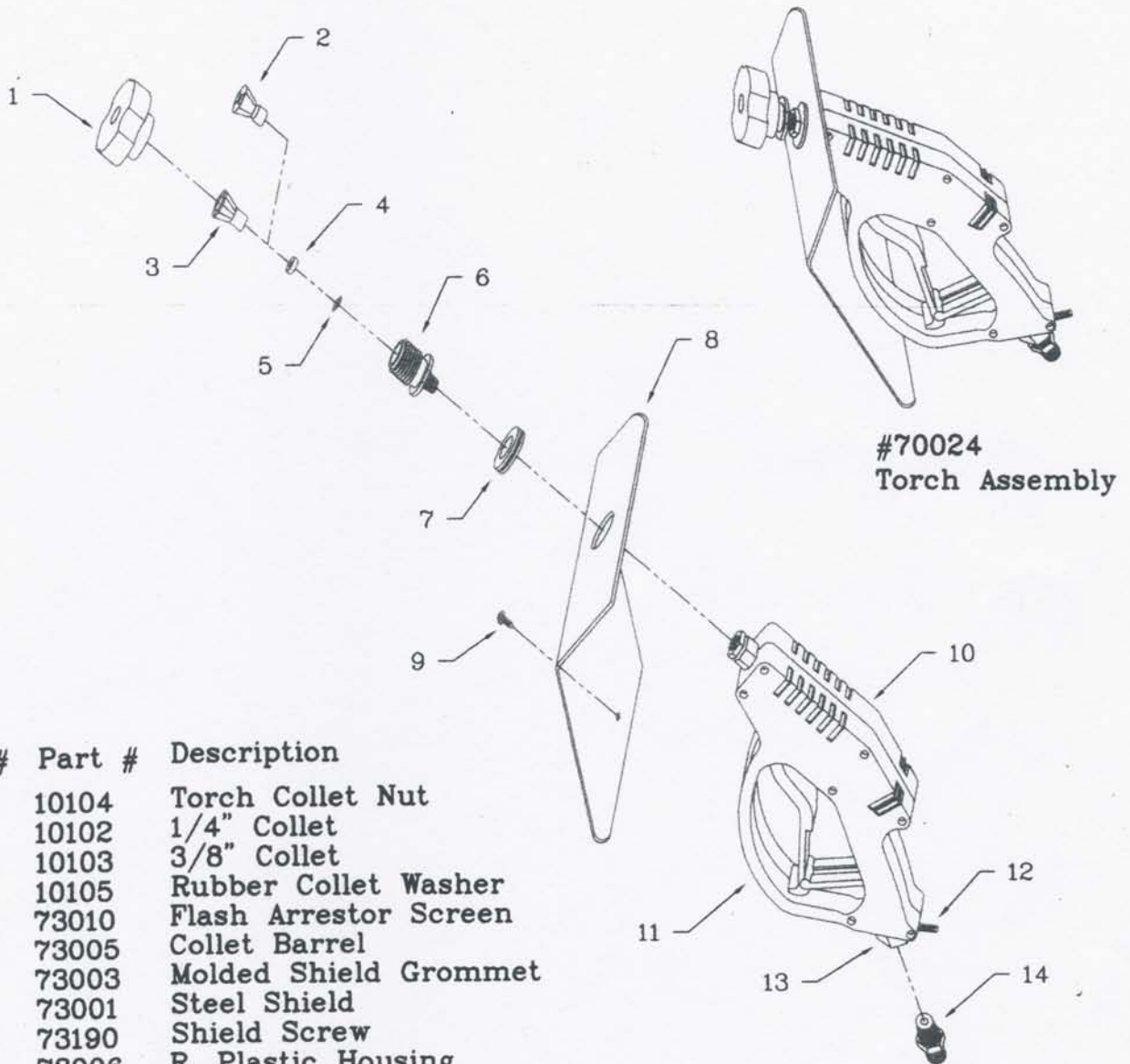


# Symex

## Hot Rod Torch



#70024  
Torch Assembly

| Item # | Part # | Description           |
|--------|--------|-----------------------|
| 1      | 10104  | Torch Collet Nut      |
| 2      | 10102  | 1/4" Collet           |
| 3      | 10103  | 3/8" Collet           |
| 4      | 10105  | Rubber Collet Washer  |
| 5      | 73010  | Flash Arrestor Screen |
| 6      | 73005  | Collet Barrel         |
| 7      | 73003  | Molded Shield Grommet |
| 8      | 73001  | Steel Shield          |
| 9      | 73190  | Shield Screw          |
| 10     | 73006  | R. Plastic Housing    |
| 11     | 73007  | L. Plastic Housing    |
| 12     | 73008  | Brass Stud            |
| 13     | 73009  | Brass Nut             |
| 14     | 73002  | Male Oxygen Inlet     |

C.H. SYMINGTON & COMPANY, INC.

6063 Frantz Rd. Suite 103, Dublin, Ohio 43017

Ph. #

614-766-2602

Fax #

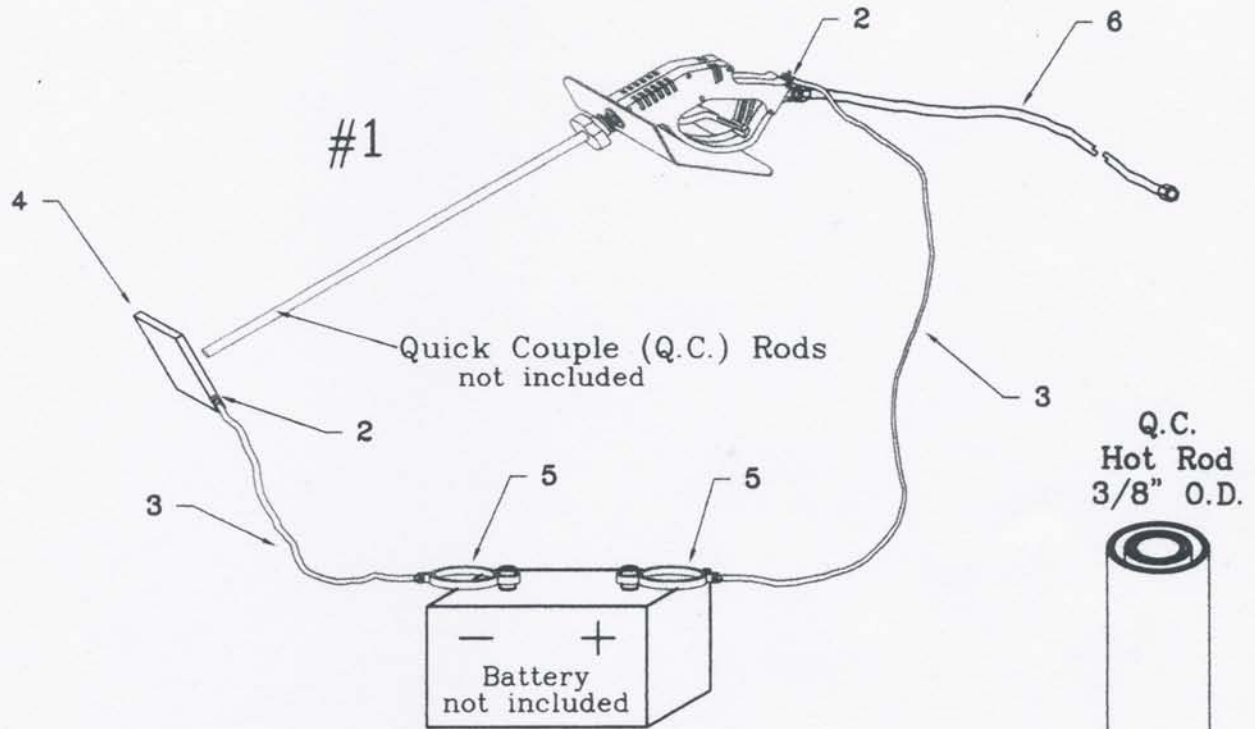
614-766-2715

Email address

symex@aol.com

# Symex

## Hot Rod Torch



| Item # | Part # | Description                 |
|--------|--------|-----------------------------|
| 1      | 70034  | Torch, 10' Cable & Hose Kit |
| <hr/>  |        |                             |
|        | 20760  | Kit Includes the following: |
| 2      | 73182  | T68 Lug                     |
| 3      | 73183  | #4 Welding Cable            |
| 4      | 73184  | Copper Striker Plate        |
| 5      | 73185  | 100 Amp Clip                |
| 6      | 73186  | Green Oxygen Hose, 1/4"     |

use

**Symex**

Exclusive

Quick Couple (Q.C.) Rods  
(24", 36" & 48" Length Rods)

C.H. SYMINGTON & COMPANY, INC.

6063 Frantz Rd. Suite 103, Dublin, Ohio 43017

Ph. #

614-766-2602

Fax #

614-766-2715

Email address

symex@aol.com