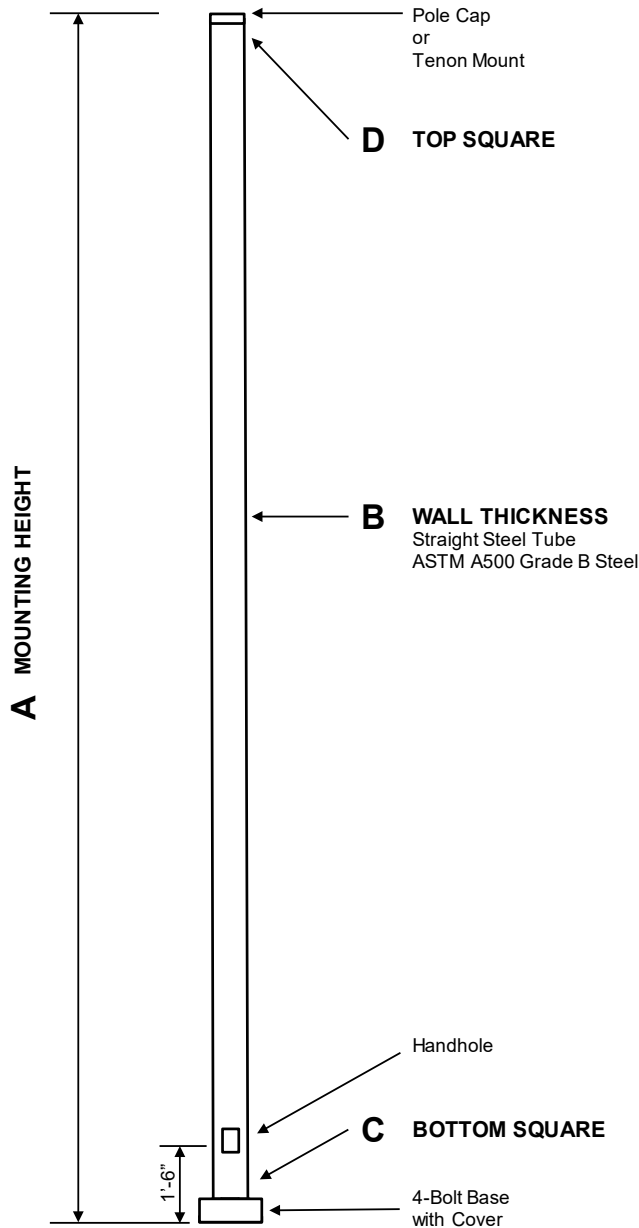


## QS-SSS Quick Ship Square Straight Steel Pole Anchor Base



### POLE

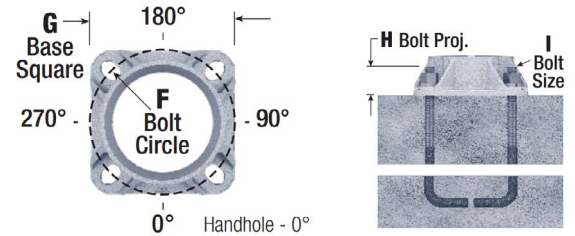
Pole shaft shall be weldable-grade, cold-rolled, commercial quality carbon steel tubing conforming to ASTM A500 Grade B.

### BASE STYLE

4-Bolt Steel Base Plate of fabricated hot rolled carbon steel conforming to ASTM A36 or equivalent with 2-piece Base Cover and attaching hardware.

### ANCHORAGE

Anchorage Kit will include four (4) L-shaped Steel Anchor Bolts conforming to AASHTO M314-90 Grade 55. Ten inches (10") of threaded end will be galvanized per ASTM A153. Kits will contain eight (8) Hex Nuts, four (4) Lock Washers, and eight (8) Flat Washers (all components Galvanized Steel). A bolt circle template will be provided.



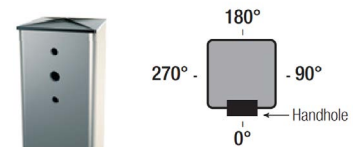
### HANDHOLE

Reinforced 3" x 5" Handhole with cover, stainless steel screw and backbar. A grounding provision incorporating a tapped 1/2"-13NC hole will be provided.

### MOUNTING

#### Side Drill Mount

Luminaire type, quantity, and orientation information must be provided for Side Drill Mount applications. A luminaire drilling template must also be supplied at time of order.



#### Tenon Mount

For Tenon Mount applications specify both Tenon diameter and length required.



A MTG HGT	B WALL GAUGE	C BUTT SQ.	D TOP SQ.	F BOLT CIR. DIA.	G BASE SQ.	H BOLT PROJ.	I BOLT SIZE	MAXIMUM EPA					ORDER NUMBER	
								70	80	100	110	120		
10	11	4	4	8.27 - 11.42	11	3	.79 x 19.69 x 3.94	25.2	23.5	20.3	19.4	17.3	15.6	SON-QS-SSS10B4-BM-T
15	11	4	4	8.27 - 11.42	11	3	.79 x 19.69 x 3.94	15.2	13.5	11.1	9.5	7.9	6.8	SON-QS-SSS15B4-BM-T
20	11	4	4	8.27 - 11.42	11	3	.79 x 19.69 x 3.94	10.2	9.3	7.5	6.2	4.2	3.6	SON-QS-SSS20B4-BM-T
25	11	4	4	8.27 - 11.42	11	3	.79 x 19.69 x 3.94	8.9	6.9	5.7	4.1	3.6	2.2	SON-QS-SSS25B4-BM-T
30	11	5	5	9.86 - 11.42	11	3	.95 x 35.74 x 3.94	9.6	7.4	6.1	5.8	4.6	3.8	SON-QS-SSS30B5-BM-T