

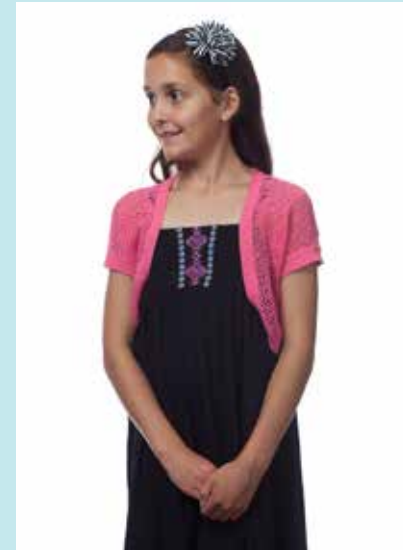
A Promise Kept



“ This was once a dream. This is now a promise.”

In embarking on this campaign, we knew that girls would need more than dreams to thrive in the future. Then as now, they faced a future of unimaginable change. The world would need all that they have to offer. To be ready, girls needed our all. At a truly historic moment, *Promise* was our answer. In breaking ground, we set out to realize a bold vision for a building and program that will endure for generations to come. Together, in fulfilling our dream for Winsor's future, we have kept our promise to the girls. Looking to the future, they will see opportunity in every challenge. They'll be confident that whatever they face in life, they are up to it. They will have you to thank.







A Message from the President of the Corporation

Dear Winsor Friends,

As we look back on *The Winsor Promise* campaign, I want to express once again my most profound gratitude to all of you for sharing our vision and stepping forward with us to usher in a new chapter in Winsor's history. I am thrilled to report the final record totals for the campaign. In all, more than 3,500 donors contributed gifts and pledges of \$82.2 million.

That's phenomenal—but not surprising. Knowing the resolve of this community, the Trustees and the campaign leadership confidently set our sights high. In the end, thanks to you, we have exceeded our very ambitious goals both in participation and dollars.

When we launched this unprecedented effort, we set out to anchor Winsor on this historic campus on Pilgrim Road for generations to come. Moreover, we set out to ensure that this great school would always be here for promising girls.

Beyond sustaining Winsor's excellence long into the future, your gifts have already reshaped girls' daily experience. The impact of your support is all around us. Since opening in spring 2015, the campaign's spectacular centerpiece, the Lubin-O'Donnell Center, has added much needed space for performing arts and for athletics and wellness.

With the opening of the exciting new academic spaces in December 2015, the new facilities are securing Winsor's place among the best schools in the country.

Fittingly, the added classroom spaces and renovated art studios in the school's circa-1910 building are now part of the newly named Rachel Friis Stettler Hall, honoring her inspired leadership and vision of an integrated learning environment.

Last fall when Rachel passed the torch to Winsor's eighth head of school, Sarah Pelmas, the transition reminded us all how the school we love is built on the shoulders of a succession of strong Winsor leaders.

“Beyond sustaining Winsor's excellence long into the future, your gifts have already reshaped girls' daily experience.”

The success of this effort depended on leadership from many corners: Nancy Gardiner P'04, '09 and Linda Thomas P'02, '06, who preceded me as chair of the Trustees and Corporation president; Bill Elfers P'14, '17 as treasurer; Bart Mitchell P'09, '11, and Jordan Warshaw P'14 as chairs of the Facilities Committee, and all those who served on the Board of Trustees throughout the campaign and through the years of campus planning in which it was rooted. These leaders and their committees expertly planned and executed the beautiful result we all enjoy today on campus.

At the same time, the impetus for this campaign was “A 21st-Century Education for Girls.” The Winsor faculty's work on a strategic plan for teaching and learning dovetailed with the plans for the building and campus. They articulated a clear vision for educational excellence and continue to bring it to life within the new spaces.

In closing, I would like to thank the exceptionally talented and committed members of the Campaign Steering Committee who, throughout the campaign period, shared my belief that this was a defining moment in Winsor's history. From the start, they recognized the unprecedented opportunity for us as leaders and supporters of this school.

I am delighted to share this final report as one more way to celebrate your commitment to our students and your confidence in Winsor. We have so much to celebrate! None of this would have been possible without your extraordinary support and generosity. Thank you!

With Gratitude,

Allison Kaneb Pellegrino '89, P'21, '22
President, The Winsor School Corporation

History in the Making

We are Winsor, and the school's future will be what we make it.

In September 2013, that clear message ran through the energizing kickoff event launching *The Winsor Promise*, the school's largest fund-raising campaign ever.

That May, students had crowded into the May P. Fogg Gymnasium one last time as the school symbolically broke ground on a project years in the making. After grappling with space constraints for decades, Winsor's Trustees and Corporators boldly set in motion what was by far the most significant construction project at Winsor since the school's original move in 1910 from Back Bay to the Longwood area.

The forward-thinking campus plan—and the equally unprecedented campaign—addressed both the challenges of the future and the school's most pressing needs. The design integrated the learning environment in a way that mirrors our vision of a 21st-century education for girls.

In the first months after the *Promise* kickoff, the bustling construction site provided a daily reminder of the dream taking shape. By the first day of school in 2014, the "skin" of the building had begun to wrap the steel framework, with the first panels of glass hinting at the light-filled spaces seen in architect's early renderings.

That fall, in unveiling the name of the Lubin-O'Donnell Center, Joseph O'Donnell P'05,'07, and Richard Lubin P'91, '97, spoke on behalf of their families about the thrill of coming together in support of a "spectacular, campus-altering project."

When Winsor students just months later streamed into the extraordinary new building for the first time, the facilities took their breath away.

By the October 2016 closing celebration, "historic" was an oft-repeated word in describing the enduring impact. In surpassing the campaign goal with \$82.2 million in gifts and pledges, *Promise* donors had not only made possible the transformative new facilities but also contributed more than \$25 million in core support of the endowment and annual giving.

In keeping our promise to the girls, we have fulfilled a dream for Winsor's future.

SEPTEMBER 2013 Campaign Kickoff



\$82.2 million

TOTAL CONTRIBUTIONS TO
THE WINSOR PROMISE CAMPAIGN

MAY 2013 Groundbreaking





140,000

ADDITIONAL SQUARE FOOTAGE OF
NEW FACILITIES, DOUBLING WINSOR'S
EDUCATIONAL SPACE



Rachel Friis Stettler Hall

In December 2015, the opening of the spectacular new Condon-Hynes Innovation Lab, four new classrooms and the renovated art studios heralded the completion of the historic construction project made possible by *Promise*. In the spring, with the naming of Rachel Friis Stettler Hall, a new overarching designation unified these spaces at the heart of the school and honored Rachel's "visionary leadership." Alumnae Commons, the welcoming new space at the crossroads of the old and new, recognizes the generosity of Winsor alumnae.



Alumnae Commons



Condon-Hynes Innovation Lab



Helen Schultz Classroom



The Diane Bezan Lounge



Cerulli Volunteers Room



Weldon Classroom

The Nancy and Richard Lubin Center for Performing Arts

With the new spaces of the Nancy and Richard Lubin Center for Performing Arts, Winsor has built on longstanding traditions in choral music and drama and introduced exciting new programs for dance and orchestra. From their spring 2015 opening, the facilities have allowed “opportunities for creativity and leadership to explode.” Students and faculty have taken full advantage of state-of-the-art light and sound systems, expanded scenery workshops, dressing and makeup rooms, and the Mars Costume Shop. The Goel Theater regularly showcases girls’ talents in every realm of the arts.



Clark Tandon Drama Studio



David E. and Stacey L. Goel Theater



View from Lempres Balcony of Goel Theater



Okamura Music Room



Koppel-Haynes Music Lab



Mars Costume Shop



Baldwin Recital Hall

The O'Donnell Center for Athletics and Wellness

The expansive new spaces of the O'Donnell Center for Athletics and Wellness have opened new horizons for the Wildcats. In the fitness room, athletes look out on the Winsor fields as they work out on adaptive motion trainers or build strength with weights and cross-fit equipment. The double-court Brock-Wilson Gymnasium has meant Winsor's basketball teams finally play on campus. The new five-court squash complex has created a home for that burgeoning program.



Doran Court

right: Brock-Wilson Gymnasium





Wilson Training Lobby



Epker-Sinha Wildcat Room

Community Spaces

In the earliest campus planning sessions, students and alumnae alike described how the intimate niches of the original building created essential gathering places. By design, the common spaces of the Lubin-O'Donnell Center and Rachel Friis Stettler Hall preserve and enhance that feeling of community. A light-filled connector links the old and new, creating the "school under one roof" imagined at groundbreaking. The lobbies, lounges and terraces welcome girls throughout the school day and serve as spaces for celebrations and showcases. Everyone has her favorite spot.



Elfers Lounge and Terrace



Below and above, Traquina Lobby and Terrace





Evans Arts Lobby



The Conway Room



Macomber Lobby



Pannell-Currier Lobby

Rising to Every Challenge

Examples abound of the burgeoning culture of philanthropy inspired by *Promise*. Two separate \$3 million challenges offer wonderful cases in point. The initiatives energized Winsor parents and alumnae, adding the incentive of a dollar-for-dollar match to make campaign gifts doubly meaningful.

Early in 2014, the goals of *Promise* inspired 14 parents to come together to create a \$3 million **Parent Challenge**. Fellow parents rose to the occasion with \$3 million in gifts of their own, allowing Winsor to realize all matching funds pledged by the Challengers.

An incredibly generous group of Winsor women stepped up with a joint pledge to create a \$3 million **Alumnae Challenge**. Julia Livingston '66, P'85, '07, for one, saw it as an opportunity for everyone "to feel great to be part of this important moment in Winsor's history." At Alumnae Weekend 2016, the school celebrated the success of the effort with the dedication of Alumnae Commons, a beautiful space at the crossroads of the old and new.

Parent Challengers

Mary McAvity Cerulli and Kurt Cerulli P'12, '16
Emily Cho and Julian Chun P'16
Melissa Ciana and Tom Copeman P'20
So-June and Liam Donohue P'20, '21
Jean and Davis Fulkerson P'17, '18, '21
Brenda Haynes and Adam Koppel P'16
Jean Hynes and Mark Condon, P'16, '18, '21

Alumnae Challengers*

Evelyn Hollingsworth Doran '57
Laurie Healy Ewald '91
Audrey McAdams Fenton '93
Elizabeth Perry Harrison '91
Julia Livingston '66
Martha Rappaport Meyers '70
Allison Kaneb Pellegrino '89
Anne Swinton Ruggles '85
Marion Pantazelos Russell '91
Emily Smith '03
Lee Thorndike Sprague '58
Grace Vanner Steward '59
*Five anonymous challengers
in classes: '41, '49, '54, '56, '66



“Take Your Seat”

Home to student assemblies, seasonal concerts, class plays, guest speakers and more, the school’s new Goel Theater is a community gathering space where traditions connect students to the past and empower them for the future.

Throughout the theater, nearly 50 bench plaques earned through the “Take Your Seat” Bench Recognition Program serve as a lasting reminder of how strongly the community came together to support Winsor’s future.



The “Take Your Seat” program rallied classes and highlighted the importance of every gift. Together, the plaques celebrate the new heights of participation reached by alumnae, parents, and faculty and staff during the campaign.

In all, 44 alumnae classes topped 60 percent participation by June 30, 2016, earning the privilege of having a bench named in their honor. The program also inspired parents of eight Winsor classes and 100 percent of Winsor’s faculty and staff to join in the effort!

In honor of the Class of 1932 The Winsor Promise	In honor of the Class of 1958 The Winsor Promise	In honor of the Class of 1987 The Winsor Promise	In honor of the Class of 2001 The Winsor Promise
In honor of the Class of 1935 The Winsor Promise	In honor of the Class of 1960 The Winsor Promise	In honor of the Class of 1988 The Winsor Promise	In honor of the Class of 2002 The Winsor Promise
In honor of the Class of 1936 The Winsor Promise	In honor of the Class of 1964 The Winsor Promise	In honor of the Class of 1989 The Winsor Promise	In honor of the Class of 2003 The Winsor Promise
In honor of the Class of 1938 The Winsor Promise	In honor of the Class of 1966 The Winsor Promise	In honor of the Class of 1990 The Winsor Promise	In honor of the Class of 2004 The Winsor Promise
In honor of the Class of 1940 The Winsor Promise	In honor of the Class of 1973 The Winsor Promise	In honor of the Class of 1991 The Winsor Promise	In honor of the Class of 2005 The Winsor Promise
In honor of the Class of 1942 The Winsor Promise	In honor of the Class of 1974 The Winsor Promise	In honor of the Class of 1992 The Winsor Promise	In honor of the Class of 2006 In memory of Nina Boylan The Winsor Promise
In honor of the Class of 1944 The Winsor Promise	In honor of the Class of 1975 The Winsor Promise	In honor of the Class of 1994 The Winsor Promise	In honor of the Class of 2007 The Winsor Promise
In honor of the Class of 1946 The Winsor Promise	In honor of the Class of 1976 The Winsor Promise	In honor of the Class of 1995 The Winsor Promise	In honor of the Class of 2010 The Winsor Promise
In honor of the Class of 1950 The Winsor Promise	In honor of the Class of 1980 The Winsor Promise	In honor of the Class of 1996 The Winsor Promise	In honor of the Class of 2016 The Winsor Promise
In honor of the Class of 1951 The Winsor Promise	In honor of the Class of 1983 The Winsor Promise	In honor of the Class of 2000 The Winsor Promise	In honor of families in the Class of 2016 The Winsor Promise
In honor of the Class of 1952 The Winsor Promise	In honor of the Class of 1986 The Winsor Promise		In honor of families in the Class of 2019 The Winsor Promise
In honor of the Class of 1954 The Winsor Promise			In honor of families in the Class of 2023 The Winsor Promise
In honor of the Class of 1956 The Winsor Promise			In honor of families in the Classes of 2017, 2018, 2020, 2021, 2022 The Winsor Promise
In honor of the Class of 1957 The Winsor Promise			In honor of Faculty and Staff The Winsor Promise

The Winsor Promise

SUMMARY OF CAMPAIGN CONTRIBUTIONS

Campaign Needs	Total
New Facilities	\$52.3 MILLION
Endowment for Financial Aid and Faculty Support	\$7.9 MILLION
Annual Giving—Five-Year Total	\$17.5 MILLION
Turf Fields/Building Renovations (completed 2008)	\$4.5 MILLION
Total*	\$82.2 MILLION

HISTORIC PARTICIPATION

3,513

total donors

17% increase in donors from previous campaign

69%

alumnae participation

98%

parent participation

HISTORIC GENEROSITY

21

donors of \$1 million or more

\$1M+ donors contributed \$47,481,098 or 58% of total dollars

117

donors of \$100,000 or more

\$100k+ donors contributed \$71,838,304 or 87% of total dollars

2.5X

Contributions totaled more than 2½ times the previous record for a Winsor campaign

HISTORIC SUPPORT

71%

Increase in annual giving since the end of previous campaign

4.1%

Compounded annual growth rate of annual giving since 2004

ANNUAL GIVING – Final Year of Campaign

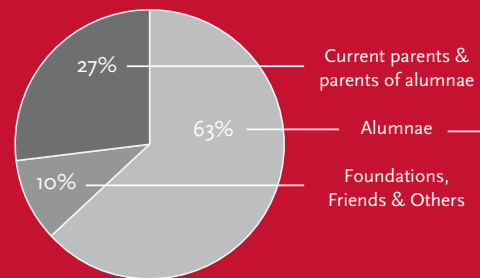
The Essential Winsor As of June 30, 2003

\$1,800,524

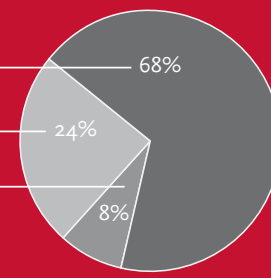
The Winsor Promise As of June 30, 2016

\$3,075,446

DONORS by Constituency



DOLLARS by Constituency







A Message from the Campaign Co-Chairs

Dear Winsor supporters,

As leaders of the Campaign Steering Committee, we have had the privilege of working with an incredibly loyal and visionary group of people who believed in Winsor's students and teachers and devoted themselves to revitalizing Winsor's campus for the 21st century and beyond.



This groundbreaking effort could not have succeeded without the generous volunteers and donors who contributed their time and more than \$82 million to support *The Winsor Promise* campaign.

Hundreds of people deserve our thanks: the scores of passionate volunteers who gave their time and energy on behalf of *Promise* to make the case for support across every segment of the community, including all of the Annual Fund co-chairs, Class VIII co-chairs, and alumnae and parent challengers; the enormously talented members of Winsor's faculty and staff, especially those who helped to create the spaces needed for the performing and visual arts and for athletics and wellness to flourish as integral parts of girls' educational experience; the Advancement and the Business Office teams who worked for years behind the scenes to make this a reality; and the architects, designers and contractors whose dedication to the project and to our school was unmatched. In short, we thank the entire Winsor family for believing in the extraordinary potential of the girls and our school and joining together to make this dream come true.

Above all, our success came from the overwhelming philanthropic support of *you*—our alumnae, parents, parents of alumnae, grandparents, faculty and staff, and friends of Winsor. Together, in keeping your promise to the girls, you have fulfilled a dream for Winsor's future.

Promise asked us all to stretch far, and you stretched even farther. We hope as you read through this report, you will take great pride in your role in this historic achievement for Winsor. We thank each and every one of you for your support.

Best Regards,

Jane Brock-Wilson P'07, '11

Joe O'Donnell P'05, '07

Nancy Gardiner P'04, '09

Allison Kaneb Pellegrino '89, P'21, '22

Jean Hynes P'16, '18, '21

“To us, the *Promise* campaign is about so much more than just a building. It’s investing in Winsor for the future just like Winsor is investing in our daughters for the future. Our daughter will only get to enjoy the new facility for a moment, but her time at Winsor, what she’s learned, the opportunities she’s had in and out of the classroom, will be with her forever. It’s in her DNA. How long does a girl stay at Winsor—6, 7, 8 years? But how long does Winsor stay with a girl? A lifetime. When you think about it that way, how can you not give?”

Mary McAvity Cerulli and Kurt Cerulli P'12,'16

Volunteer Recognition

This campaign report honors not only financial contributions but also the invaluable gifts of time, energy and wisdom. In addition to the leadership volunteers recognized here, countless others across the Winsor community made the case for *Promise*. Every year, the school’s most passionate advocates and supporters stepped up as chairs of parent, alumnae and faculty/staff giving, parent volunteers, alumnae class liaisons, and in any role needed.

CAMPAIGN STEERING COMMITTEE

Co-chairs

Jane Brock-Wilson P'07, '11
Nancy B. Gardiner P'04, '09
Jean M. Hynes P'16, '18, '21
Joseph J. O'Donnell P'05, '07
Allison Kaneb Pellegrino '89 P'21, '22

Committee Members

David Belluck P'17, '19
John R. Egan P'09, '13
William R. Elfers P'14, '17
Liz Lempres P'17
Sarah Pelmas
Rachel Friis Stettler
Linda H. Thomas P'02, '06
Nancy Sullivan Skinner

LEADERSHIP GIFTS COMMITTEE

Co-chairs

Mary McAvity Cerulli P'12, '16
Sean Collins P'12, '18
Pamela Smith Henrikson '58
Adrienne Penta Lissner '96

Committee Members

Martina Albright P'17
Hillary Brown '80, P'17
Michael Cronin P'07
Jeffrey Drucker P'18
Bridgitt Evans P'09, '11
Bruce Evans P'09, '11
Peggy O'Brien Eysenbach '81, P'10, '16
Winnie Faust P'17
Audrey McAdams Fenton '93
Davis Fulkerson P'17, '18, '21
Mary Gallagher '94

Brenda Haynes P'16
Elizabeth Partridge Heald '57, P'87, GP'18, '20, '21
William Heald P'18, '21
Ashley Jacobs P'17
Adam Koppel P'16
Angela Koutoulakis P'17
Marlyn McGrath '66, P'96, '03
Anne McNay P'16
Anne Swinton Ruggles '85, P'14
Lynda Spence '57, P'90
Lee Thorndike Sprague '58



The Winsor Promise Honor Roll of All Donors to the Campaign

The Winsor School extends its deepest appreciation to the following alumnae, parents and friends who have generously supported the Winsor Promise campaign. Contributions are the sum of gifts and pledges for capital and endowment purposes *plus* all gifts and pledges to the Annual Fund during the five-year campaign period (2012–2016).

FOUNDER'S CIRCLE

\$5,000,000+

David E. and Stacey L. Goel P'23
Nancy Kurson Lubin '64 and
Richard Lubin P'91, '97
Katherine and Joseph O'Donnell P'05, '07

HEAD OF SCHOOL'S CIRCLE

\$2,500,000+

Anonymous
A.W. Baldwin Charitable Foundation, Inc.
Jane Brock-Wilson P'07, '11
Jean M. Hynes and Mark Joseph Condon
P'16, '18, '18, '21
Perry and Robin Traquina P'09, '13

CHAMPIONS

\$1,000,000+

Anonymous (2)
David Belluck P'17, '19
Jocelyn Belluck P'17, '19
Karen and Brian Conway P'10
Evelyn Hollingsworth Doran '57 and
Robert Doran
Pamela and Jack Egan P'09, '13
Deborah and William R. Elfers P'14, '17
Medha Sinha and Bart Epker P'13
Bridgitt and Bruce Evans P'09, '11
Ann Leonard Macomber '47 and
George Macomber*
The Mars Family P'19, GP'19
Andrea Okamura '72 and
Jeffrey T. Chambers
Saul J. Pannell and Sally W. Currier P'07
Karen Clark and Pankaj Tandon
P'05, '08, '10

GUARDIANS

\$500,000+

Anonymous
Mary McAvity Cerulli and Kurt Cerulli
P'12, '16
Emily Cho and Julian Chun P'16, '23
Linda Wisnewski and William P. Collatos
P'03, '05, '09
Winifred and Thomas Faust P'17
Jean and Davis Fulkerson P'17, '18, '21
Andrea and Frederick Hoff P'18, '22
Paul D. Kazilionis P'19
Brenda Haynes and Adam Koppel P'16
Liz and Marty Lempres P'17
Karen and Warren McFarlan P'92
Poonam Patni P'98
Kenneth and E. Pixley Schiciano P'13
Meghan and Kent Weldon P'16
Janet Doerr Wilson '70 and
Steven R. Wilson

ADVOCATES

\$250,000+

Anonymous (2)
Marc and Todd Abbrecht P'21
Hope Lincoln Baker '62
The Charles A. Dana Foundation
The Cronin Family P'07
John H. Deknatel and Carol M. Taylor
P'88, '01
Dorothy Melcher Sneath '18
Scholarship Foundation
Hilary Bacon Gabrieli '78 and
Christopher Gabrieli P'13, '15, '16
Anika Agarwal and Amit Gupta P'13
Elizabeth Partridge Heald '57, P'87, GP'18,
'20, '21~
Kimberly Heald Krawshuk '87 and
Michael Krawshuk P'20~
Catherine and William Heald P'18, '21~
The JOR Family Charitable Lead
Annuity Trust
Emily Smith Magruder '03

Rebecca and Scott McGrath P'13
Anne and Colin McNay P'16
Dianne and Timothy O'Connor P'17, '21
Allison Kaneb Pellegrino '89 and
Stephen J. Pellegrino P'21, '22
The Ruggles Family
Marion Pantazelos Russell '91 and
Mark Russell P'22
Kristin and Roger Servison P'07
Susan and John Simon P'16
Forbes Singer '72 and David Modest
Lynda Spence '57, P'90
Frances Bland Youngblood '56*

* Deceased

~ Family Gift



**“I sincerely believe that Winsor is producing the leaders
of the next generation, that among these girls are
future presidents and justices of the Supreme Court.
They have the intellect, the passion, the sense of duty.
And our world will be a better place for it.”**

Hilary Bacon Gabrieli '78, P'13, '15, '16

PARTNERS

\$100,000+

Anonymous (4)
Anna Gunnarson-Afeyan and
Noubar Afeyan P'08, '10, '13
Kathryn and Ajay Agarwal P'20, '23
Lee Lawrence Albright '57 and
Nile Albright P'88, GP'17~
Martina Albright and Jon Bernstein P'17~
Cheryl and Rand Alexander P'09
Julie and John Barker P'21, '23
Penelope Parkman Biggs '54 and
John Biggs
Rose Busk Bloom '48 and John C. Bloom
Anita and Stephen Blyth P'19, '20
Robert and Patricia Brace P'73
Emily and Vincent Camacho, II P'15
Alison Coolidge '76 and Tom Boreiko
Melissa Ciana and Thomas Copeman
P'20, '24
Abigail Crozier Nestlehatt '87~
Prudence S. Crozier '92~
Prudence S. and William M. Crozier, Jr.
P'87, '92~
So-June and Liam Donohue P'21
June and Walter Downey P'80, GP'15~
Alicia L. Downey '80, P'15~

Margaret and Michael Elizondo P'17
Laurie Healy Ewald '91 and Michael
Ewald P'23
Angela Koutoulakis Farina and
Joseph C. Farina P'17
Corinne and Tim C. Ferguson P'05, '07,
'09, '11
Susan Dymecki and Jason Fisherman
P'20, '21
Susan Alexander and James Gammill
P'03, '05, '08
Nancy and Nat Gardiner P'04, '09
Laurie and Richard Gliklich P'17
Elizabeth Perry Harrison '91 and
Justin Harrison P'22 '24
Leigh and Charles Hebard P'24
Pamela Smith Henrikson '58
Lee Bigelow Herter '50
Donna and Christian Hoffman P'88,
'89, GP'22
Ashley and Bruce Jacobs P'17
Ann and Ed Kania P'11, '14, '18
Amanda and Sam Kennedy P'23
Kingsbury Road Charitable Foundation
Charlotte and Charles L. Kline P'10, '13
Ellen and Ernest Kornmehl P'19

Patricia Perrin Lawrence '46 and
Robert A. Lawrence P'72
Lisa and Daniel Lehan P'18
Julia C. Livingston '66, P'85, '07
Martha Rappaport Meyers '70
Mary Lou and Anthony Monaco P'86,
GP'16, '19~
Lisa S. and Christopher Monaco P'16, '19~
Lisa O. Monaco '86~
A. Peter Monaco, Jr.~
Inna and Mark Moore P'22
Anne Lyman Powers '40, P'76
Luanne Selk and Jon Skillman P'12
Lee Thorndike Sprague '58
Kimberly and Troy Stanfield P'15, '20
Grace Vanner Steward '59* and
Campbell Steward P'88
Jennifer and Seth Stier P'19
Marjorie and Dan Sullivan P'01, '03, '07
Louise Sunderland '66
Jeffrey S. Thomas P'02, '06
Linda H. Thomas P'02, '06
Nancy and Michael Tooke P'98~
Katherine Tooke '98~
Margaret Goodhue Whitman '39*
Ralph R. Willard P'09

LEADERS

\$50,000+

Anonymous (3)
The Baldwin Foundation
Stacie and David Barnes P'20, '22
Margaret and Thomas Bridge P'10, '13
Eleanor Lewis Campbell '46 and
Levin H. Campbell GP'15
Raymond Chung and Diane
Abraczinskas P'18, '21
Roberta and Lawrence H. Cohn* P'81,
'89, GP'09 '11~
Leslie Cohn Bernstein '81 and
Stephen Bernstein P'09, '11~
Jennifer Cohn '89~
Mary B. Comstock '52
Wendy and Travis Connors P'20, '22~
Maria and William Spears GP'20, '22~
Sara Rowbotham Cornell '81, P'13, '15
Jennifer and Jeffrey Drucker P'18
Audrey McAdams Fenton '93 and
Colin Fenton
Reva and Eric Fischman P'15
John N. Fulham, III P'10

Margot Gerrity Finley '63 and
John H. Finley P'91~
Cassie Gerrity '01~
Charlotte Finley Maynard '91 and
Todd Maynard P'21~
Ruth Gerrity Timme '70~
Heidi Wyle and David Gifford P'17
Abby Minot Gross '42
Luciana Aquino-Hagedorn and
Charles Hagedorn P'22
Paul Hummel and Jessica Greenfield P'20
Beth Johnson P'17
Mr. and Mrs. Paul D. Kaneb P'89
Robert Ketterson P'17
Joan Goodwin Kinne '50
Katharine Lawrence '47*
Jill and William Leisman P'95, '98, '00~
Jennifer Leisman Dessert '95~
Christiane Leisman Tolley '98~
Katherine Leisman '00~
Adrienne Penta Lissner '96 and
Daniel Lissner~
Louise Penta P'96~

Jane Cox MacElree '47
Susan and Eric Marandett P'16
Sarah Mars P'19
Karen Gordon Mills '71 and Barry Mills
Peter Neumann P'15
Monica Chandra and Nitin Nohria P'15
Laurie and Krishna Palepu P'21
Caroline and Fred Scherneck P'17, '20
Jennifer and Michael Skoler P'20
Elizabeth Riley and Daniel Smith P'03
Jeanne and Donald Stanton P'93, '97
John L. Thorndike GP'19
Yun Soo and Adrian Vermeule P'20
Kajal and Stephen Vicinelli P'14, '17
Ming Hui Chen and Christopher
Walsh P'13, '16
Anne Wardwell '49*
Sydney and Jonathan Winthrop P'09, '12

BENEFACTORS

\$25,000+

Anonymous (3)
Megan Weeks Adams P'21
Warren Adams P'21
The Adelard A. and Valeda Lea Roy
Foundation
Lauren Alexander '09
Eman and Essam Ansari P'20, '24
Christiana and Oliver Bardon P'18
Laura and Scott Beebe P'16
Sarah Higginson Begley '45
Winnie K. Wong and Peter Belina P'14, '18
Josephine Hornor Belknap '48
Ellen Dunnell Bennett '48*
Barbara Doerr Benson '69 and
Andrew Benson
Brant Binder P'20
Allie Flather Blodgett '52
Sarah Beatty Buller '84
Anjum and Nadeem Butte P'17
Nicole Simourian Chapman '84
and Marc Chapman P'17, '19
Clara B. Winthrop 1894 Charitable Trust
Margaret Jackson Clowes '32 P'69
Lauren Budding and Pieter Cohen P'21
John Dubrow and Andrew Compaine P'20
Christina Spagnuolo Condrone '92
Stefanie and Douglas Cronin P'17

Lee and John Englert P'20, '22
Wendy Colten Finnerty '64 and
Richard Finnerty P'92
Elizabeth and Thomas Fries P'19
Kristin Ganong '91
Olivia Garfield '76
Ellen and John Giannuzzi P'09, '12
Colleen and Paul Gustafson P'15
Martin Hall and Sarita Uribe P'21
Charlotte B. Heartt P'75*
Jennifer Inker '83
Dorothy Jenney '43*
Abigail and Edward Johnson P'21
The Johnson Family
John T. Lee and Andrea K. Ng P'21
Chian Jiang and Beirong Liang P'14
Michele and David Livingston P'15
Eleanor Trumbull Lowell '40, P'69, '77*
Leslie C. Lucchina and Thomas E.
MacGillivray P'15
Tamara Nikuradse and
Scott Matthews P'17
Rachel Mayer Judlowe '95 and
Michael Judlowe~
Erica Mayer '91 and Douglas Drachman~
Jane and Robert Mayer P'91, '95~
Susan Lillian Mazur '92 and Scott Mazur

Rebecca and Michael McDonald P'16
Harriet Williams Nicol '51
Pauline Bray Nutting '57 and
William Nutting
Anne Phillips Ogilby '76 and
Henry Ogilby P'08
Mary Byrd Platt '49
Lauri Union and Stanley Rosenzweig P'19
Susan Stobaugh Samuelson '70, P'00
Christina Capodilupo Schwefel '97
and Harry Schwefel
Sandee and Peter Simshauser P'17, '20
Elizabeth Skates '88
Rachel Friis Stettler and David Stettler
Mary Ann Dexter Streeter '50
Suzanne and John M. Westcott, Jr. P'90
Lynda Sperry and William Wiberg P'13
William E. Schrafft and Bertha E. Schrafft
Charitable Trust
Natalie and Hugo Williams P'14, '17
Emily Woods '91
Marcia and Hugo Yamada P'14, '17
Erin Xie and Xiaotian Zhu P'18

* Deceased

~ Family Gift



“We need more competent, responsible, generous-minded women running this city and involved in this country and this world, and this is a way to help do that. So I hope every alumna will step up and realize... it’s our job to secure that future for them.”

Anne Phillips Ogilby '76, P'08

PATRONS

\$10,000+

Anonymous
Abigail Casner Ackerman '86 and
Jeffrey Ackerman P'21
Holly and David Ambler P'15
Anju Nohria and Bharat Anand P'22
Charlotte Horwood Armstrong '45
Andrea and David Attisani P'15
Katharine T. Baker-Carr '80
Rajeev and Rachna Balakrishna P'21
Joan and Robert Barsamian P'14
Judy and Matthew Beecher P'21
Mimi and George Bennett P'89
Joan Feinberg Berns '66
Allan Bezan, M.D.
Henriette Pennypacker Binswanger '52
Ann-Elisa Wetherald Black '51
Deborah Hill Bornheimer '62, P'87, '92
Alice Hedge Brewer '42, P'70, '72
Gloria and David Brewster P'14
Hillary S. Brown '80 and
Michael Grill P'17
Ellen Berkman and David Bryant P'21
Debra and William Bulkeley P'10, '17
Mary Mullen and Harold Burstein P'18
Elizabeth Bennett Carroll '89 and
John A. Carroll, III
James Carroll and Claire Masinton P'20
Sally Williams Casey '56
June Song and John Chang P'19

Dawn Ding and Liu-Er Chen P'19
Patricia and John Chory P'13
Linda Cies '74
Carnzu Clark '32*
Edith Clowes '69
Gabiella and Lawrence Coburn P'78, '82
Wendy and Gordon Cromwell P'21
Caitlin Crowe '89
Joan Dunphy Curwen '42*
Edith LaCroix Dabney '48 and
Lewis Dabney P'72, '77
Jennifer and Kevin DaSilva P'15
Heather Oppenheim Davidson '88
and Christopher Davidson P'22
Laura Knapp Davidson '86 and
Simon Davidson P'21
Ann Merrifield and Wayne Davis P'06
Carol Deane P'07
Barbara Ginn Deely '44*
The Plante Family P'16
Anandi and William Ebsworth P'09, '12
Janet Rich-Edwards and
Mark A. Edwards P'11, '14
Joan Howell and Timothy G. Egan P'18
Peggy O'Brien Eysenbach '81 and
Mac Eysenbach P'10, '16
Atsuko and Lawrence Fish P'99, '05
Audrey Flannery
Valerie Glauber Fleishman '88

Rebecca and Robert Forrester P'14, '16
Elizabeth Frick P'14
Joanna and Charles Fuchs P'16
Daniel T. Gallagher and Mimi Fong P'20
Susan Mabrey Gaud '64
Claire Pasternack Goldsmith '01
Carolyn Cline and Marcus Gordon P'16
Jamie Scarborough and Daniel Green
P'15, '17, '19
Annette and Donald E. Green P'17
Amelia Rogers Guise '48
Liliane Wong and Daniel Halston P'18
Major General Robert A. Harding and
Lieutenant Colonel Lisa M. Tucker
P'20
Ainsley Rose Hayes '95
Zhiqiang He and Linyun Chen P'18
Nancy Hooe Holmes '42*
Laura Georgaklis Hopkins '75
Peter and Holly LeCraw Howe P'14
Jessie Williams Howland '60
Maureen Connolly and Edward Hoyt
P'08, '14
William Hudson
Matthew C. Hurley
Anne Becker and Eric Isselbacher P'18
Virginia and Eric Jacobsen P'16, '18, '23
Carrie Jenks '94 and J. Michael Rubel

PATRONS (continued)

\$10,000+

Jane Hunnewell Kaplan '80 and Harold Kaplan P'17, '19
Kathy Keeler P'13
Emilie Kaulbach Kendall '78 and Andrew Kendall
Patrice and Robert Kester P'13, '19
Christine and Ravi Khanna P'16
Nathalie Boileau and Ramin Khorasani P'13, '16
Alison Killilea '94
Rebecca and David King P'20
Paula Hayden Knier '62 and Frederick Knier P'89
Tyler Knowles and Lawrence Flood
Janet Spero Kouroubacalis '78 and Steven Kouroubacalis
Kim and Matthew Kozol P'18
Debby and Paul Kuenstner P'08
Persis Gleason Laverack '45
Joan Trumbull Leighton '64
Elizabeth M. Lewis '96
Xiaojun Li and Hongyu Jiang P'21
Michele Norman and Steve Loose P'20 '22
Fangli Chen and Yu Lu P'17
Kate Lubin '97
Lucia and Matthew Matule P'19
Rebecca May '91 and Fernando Rivas
Marlyn E. McGrath '66, P'96, '03
Mary and Robert W. McNamara GP'09, '13
Nancy and Mark Michalowski P'11, '18
Susan Siebert and Bartholomew J. Mitchell P'09, '11
Marianne and Richard Moscicki P'14
Kristen and Brian Mullaney P'19
Maureen and John Nahill P'07, '10, '12, '16
Eleanor Tripp November '54
Stephen O'Brien and Jonette Nagai P'16
Arden O'Connor '96
Nell O'Donnell '81
Virginia Lavelle Ogden '53
Lori Holik and Charles Ognibene P'14
Holly Oh and Robert Park P'19, '24
Nancy Hill Payne '36*
Roberta and Joseph Pellegrino P'15, '18
Antonia and Patrick Perry P'18, '22
Carolyn and Georges Peter
Diana Walcott Phillips '59*
Elizabeth Hood Pigford '48



“Our family was so glad to honor one of our daughters’ favorite teachers by dedicating a classroom to Helen Schultz. She has been incredibly supportive and truly inspired our daughter with her love for language and learning. Her passion will always remain with her.”

Emily Cho and Julian Chun P'16, '23

Whitney Connaughton and Aaron Pressman P'17, '22
Sheila and Kevin Quinn P'19
Nancy Rappaport '78 and Colin Flavin P'08, '13
Louise Crowninshield Riemer '46, P'71, '74
Anne Newell Robertson '57
Keziah Robinson '96
Linda Robinson P'96, '98
Ann and Anthony Ryan P'12
Kristen Hoffman Ryan '88 and Patrick Ryan P'22
Phyllis and Len Schlesinger P'98, '01
Elizabeth Schueler '81
Elizabeth McFarlan Scott '92
Amita Sharma and Avinash Shukla P'17
Francesca and Mat Sibble P'20
Joan Swartz Siff '84 and Lawrence Siff P'15
Nancy Sullivan Skinner and Rod Skinner
Kevin F. Smith and Molly B. Jenks P'94
Jill and Matthew Smith P'21
Sarah Enders Steffian '50
Arline and Harvey Steinberg GP'05
Lisa and Gregg Stone P'03

Margaret Winsor Stubbs '48, P'70, '73
Sara Oliver Swaim '75 and Peter Swaim P'05
Aurora Swithenbank '93
Squeakie Thompson '72 and the Estate of Rosamond Higgins Thompson '38
Rosemary and Stewart Thomsen P'12
Julia Tobey '61
Susannah Tobin '96
Carolyn Kimball Tolles '58
Julia Topalian '96
Margaret Brush Vandermade '38*
Kasumi and Greg Verdine P'07, '12
Elizabeth Gwin Vestner '55
Nicole de Lisle and Jordan Warshaw P'14
Deborah Jackson Weiss '64
Sylvia and Christoph Westphal P'18
Ling Zhang and Patrick Weyer P'17
Sally Wilkins '58
Nora and Samuel H. Wolcott GP'14
Barbara and Kevin Wrenn P'18
Giang and James Wyner P'19
Elizabeth Yntema '76
Bryn Zeckhauser '89 and Carlton Jones P'24

* Deceased

~ Family Gift

“ One of the most remarkable things about providing resources to young people is that they will always surprise you. Winsor girls are going to write books, cure diseases, start technology companies, and lead movements for change. They are alive with ideas. When it comes to parents, there is probably nothing more incredible than watching your daughters grow—in their curiosity, their creativity, and their capacity to think and rethink about information presented to them. As parents, we know that our daughter will leave Winsor years from now as a far different, far better person. As stewards, we want to make sure we leave Winsor better off than when we began our service to the school.”

David and Stacey Goel P'23

SUPPORTERS

UNDER \$10,000

Anonymous (34)
Maureen and Joseph Abate P'81, '83,
GP'21
Michele and Joseph Abate P'21
Maura Abate '81
Whitney Tibolt and David Abbott P'22
Nadia Abdulrazak '96
Emily Perlman Abedon '86
Mehitable Mackay-Smith Abeles '49
Caroline Abernethy
Jon Abrams P'11
Leah Abrams '11
Taylor F. Abrams '05
Hala Abu-Eid '06
Ashley Ackerman '84 and
Sean Rynne P'24
Margaret and Robert W. Ackerman P'84
Elizabeth Adam '87
Anna Mack Adams '63
Julianne Adams '10
Nancy Motley Adams '44
Lauren Parkhill Adey '89
Armine Afeyan '08
Lena Afeyan '13
Taleen Afeyan '10
Alice Agoos '71
Maria Moreno and Jaime Aguilar P'17
Irina Lutskaia Aguirre '91
Rahimah Ahmad P'19
Nancy Allman Ainsworth '60*
Victoria B. Aisenberg '05
Elizabeth Albert
Michael Albert and
Dorothee Rozenberg P'20
Ann Shepler Albright '57
Anne Alden '74
Patricia Livingston Aldrich '73
Grace Tyler Alexander '60
Guy Alexander*
Cory and James Alexandre P'18
Catherine Curtis Allard '43 and
Hebert Allard
Anne Claflin Allen '47*
Gertrude Allen P'64*
Kate Allen
Melody Allen '64
Kim Alleyne '88
Anne Allison '93
Bryn Woll Allpress '93
Amalia A. Almada '05
Rebecca Alper '05
Roberta Isberg and Seth Alper P'05
Emily Leadbetter Althausen '58 P'88
Andrea Alvarez '16
Yeseny and Jaime Alvarez P'16
Carolina Ruiz and Sergio Alvarez P'17
Elizabeth Motley Ames '37

* Deceased

~ Family Gift



“It’s a really key moment because the future starts now. As alumnae, we need to support Winsor in its mission to put forth amazing women and leaders.”

Rachel Casseus '02

Tiffany and Joseph Amorosino P'20
Sally Thacher Amory '43
Peter Amram
Suma Anand '13
Bob F. Anderson
April and Bryan Anderson P'23
Melody and Colin Anderson P'94, '97
Patricia Edwards Anderson '60
Emily Schmidt Andrews '76
Joyce Bisbee Andrews '49*
Alva Hood Angle '45
Deborah Mattison Angotti '66
Barbara Beatley Anthony '46
Sara Finnerty Anton '89
Laura I. Antuna
Junnat Anwar '16
Salma Batool-Anwar and
Waqar Anwar P'16, '19
Sally Rubin and Arthur Applbaum P'15
Sophia Applbaum '15
Norma Appleyard
Paula and Sheldon P. Apsell P'98
Mr. and Mrs. Edward Aptaker GP'09, '16
Denise Aranoff-Brown '83
Jennifer Dalsimer Archer '82
Katharine Aretz '03
Andrea Haywood Armstrong '94
Jasmine Raynor Arnold and
Walter Arnold P'12
Hope Green Arns '62
Courtney Arrington '85
Jacquelyne Arrington P'85
Robyn Gibson Asenso '06
Mihret Asfaw P'21
Arlean and Joel Ashman P'20

Sara-Kate Astrove '07
Florence Gallup Atkins '45
Louisa Dineen Attenborough '79
Clayre Attisani '15
Merritt Strieder Atwood '60
Colette and Saint Aufranc P'20
Emily Ausubel '08
Stephanie Bird and
Frederick Ausubel P'08
Katrina Hanson Avery '57
Hilary Siegel Axam '88
Sarah Luehrman Axelrod '04
Angel Ayres
Fatima Aziz '06
Enke Myagmarjav and Dagva Baatar P'19
Victoria Plimpton Babcock '74
Averill Babson '69
Barbara Bach '52
Mr. and Mrs. Irving A. Backman P'74, '78
A. Smoki Bacon and Richard Concannon
P'76, '78, GP'13, '15, '16
Alexandra Bacon '79
Beth Abate Bacon '83
Hannah Lefkowitz Bahl '86
Barbara Bailey
Alliston Baker '59
Barry Baker
Caroline Baker '04
Jennifer Baker
Louise Hollingsworth Baker '73
and William R. Baker P'04
Meghan Baker '91
Prema M. Santosh and
Santosh Balagopalan P'19
Noor Balbaky '09

Dorothy Hovey Baldini '45*
Elizabeth Perry Ball '47
Raquel Balmelli
Taruna and Bhaskar Banerjee P'22
Joya Banerjee '00
Rachael Schneider Barabell '75
Anne King Barbour '48
Priscilla Baybutt Barlow '74
Megan M. Barnard '02
Mary Barnes '71
Michaela Barsamian '14
Diana Bartenstein '08
Sarah Bartlett '66
Anna Bartow '57
Susannah Baruch '87
Grace Winsor Bates '65
Madeline Batt '15
Laura and Martin Batt P'15
Annabelle Batten '12
Margaret and Mark Batten P'10, '12
Christina Baudis
Suzanne Baumann
Jocelyn Smith Baumgarten '46
Emily Beal '02
Margaret Cross Bean '39*
Paige Beaton '08
Gale and Thomas Beaton P'08
Breana Beaudreault '15
Lydia and Gerald Beaudreault P'15
Alanna and Howard Beber P'20
Erica Panis Becker '01
Valerie J. Becker
Judith and William Becker
Caroline Gardner Beckjord '49*
Elizabeth Schrader Bedell '76 and
James Bedell
June and Terence W. Bedford P'92
Judy and David Beebe GP'16
Eliza Beebe '16
Sandra Ross Behrens '54
Morgan Belina '14
Catherine Fitch Bell '60
Cynthia and Christopher Bell
Margaret and James B. Bell P'14
Connor Bell '07
Peter Bell P'07
Sarah Bell '14
Susan and Steven Bellerose
Meredith Benedict '88
Gordon Benett P'10
Jonathan Benjamin GP'11
Joyce Benjamin GP'11
Rebekah Benjamin-Pollak '11
Elizabeth T. Bennett
Kimberly Balfour-Bennett and
Hugh Bennett P'08
John T. Bennett, Jr.
Victoria Bennett '08
Rose Bigelow Bensen '68

Linda D. Bentley P'88
Marjorie Bullitt Bequette '90
Jean and Solomon Berg P'77, '81, '85
Mary Lee Berger-Hughes '67
Kristina Berglund '98
Helga and Milton Berglund P'98, '00
Eve Berman '81
Lynne Bornstein Belmont '92
Richard and Lyn Bernasco
Carly Bernstein '09
Rachel Bernstein '11
Jacqueline Berthet '74
Lexie Berwick '08
Carol Shearer-Best and Joseph Best P'13
Zenzele Best '13
Mary Bethoney '86
Christopher Bettencourt
Mary Winsor Beyer '50*
Ariella Bezan
Jayme Bezan
Mary and Robert Bickart GP'16
Beatrice Biebuyck and
Marco Farsheed P'21
Liliana Bierer '14
Elizabeth and Michael Bierer P'14
Deborah Ellis Bigelow '57
Patricia Higginson Biggar '56
Margaret Biller and Jeffrey Rosenberg
Leslie Gaynor Billingsley '62
Elizabeth Harding Binney '82
Eleanor Birch
Lisa Mirabile and Giles Birch P'13
Pamela Hill Biren '54
Hilary Birmingham '85
Ann Stouffer Bisconti '58
Dia Black '93
Julie Black '00
Katharine Cohen Black '62 and
Peter M. Black P'93
Linda Cabot Black '47
Barbara Appignani and
Stephen Blacklow P'17
Camilla Cunningham Blackman '48
Lydia Pratt Blackshaw '48
Josephine Swan Blagden '49
Amanda Blakeley '83
Kathleen Nahill Blanchard '07
Chuckie Raye Blaney '55
Perry Blank '07
Patricia and Timothy Blank P'07
Jessica and Marc Blaustein P'15
Ellen and Mordy Blaustein GP'15
Kaitlin Bleier '99
Lindsay Bleier '94
Amanda Blicharz
Emily Bloch '12
Roslyn Bloch GP'91, '95
Sara Singer and Gordon Bloom P'17
Nancy Bloom '72

Emily Bloomfield '78
Martha Aladjem Bloomfield '69
Mary Hoyt Blum '44*
Claire Blumenson '02
Rachel Bobruff '96
Rebecca Kornblatt and Harvey Bock
Duschia and Paul Bodet P'16
Gail Awad Bogle '74
Susan Dusenbery and Daniel Bohl P'22
Christiane and Guy Boileau GP'13, '16
Julia Bojanowski P'19
Melissa Bond '00
Monica Bond '03
Karen Kaufman and Kelly Bonnevie P'19
Katherine Birmingham Bontekoe '87
Charlotte Borden '15
Hanna Borgstedt '16
Robin and Mats Borgstedt P'16
Irina Kogan and Serguei Borkov P'15
Elizabeth Bornheimer '92
Lauren Fine Bornstein '07
Steven Borowka
Kate D. Borrero '02
Sarah Bothe '91
Susannah Bothe '93
Karin Bothwell '06
Judith Botsford '67
Joanne Dwinell Bovey '56
Dorian Bowman
Kathleen and Sean Bracken P'20
Christine and Donald Bradley P'16
Jane W. Bradley*
Robin Bradley '00
Felicia Brady-Lopez
Elizabeth Bragg '52
Nathalie Hubbard Bramson '59
Anne Briggs Branch '93
Judy and Bradley Brasher P'18
William M. Braucher P'93
Linda Abrams Braun '56 and Peter Braun
Rebecca Braun '89
Martha Franklin Braunstein '73
Laura Bravo Melguizo
Julian and Ayanna Braxton
Nan Leonard and Cesar Brea P'13
Katherine Brea '13
Susan and William Breed
Sandy and Eric Brenman P'05
Stephanie Brenman '05
Hannah Brennan '05
Kerry P. Brennan
Lisa and Tom Brennan P'18
Virginia O'Brien Brennan '77
Patricia Bresky '69
Holly Breuer '14
Meghan and Stefan Breuer P'14
Gale Brewer '69
Marion Brewer '70

SUPPORTERS (continued)

UNDER \$10,000

Elizabeth Brewster '14
Elizabeth Leonard Breyman '46
Amy W. Bridge '10
Eleanor Bridge '13
Sarah Melvoin Bridich '96
F. Gorham Brigham* and
Amy B. Brigham P'60
Kelly Brilliant
Casey Brock-Wilson '07
Stephanie Brock-Wilson '11
Ailiki Hasiotis Broderick '93 and
Edward Broderick P'19
Caroline Broderick P'19
Lisa Kennard Broderick '57*
Barbara Colten Brody '65
Razan and Robert Brooker P'19
Ruth Dumaine Brooking '50
Alison Brooks '61
Deborah Gannett Brooks '65
Hester Moore Brooks '55
Kimberly Brooks '89
Virginia Woodworth Brooks '66
Alexis Broome '86
L. Meredith Broome '89
Carolyn and Jonathan Brougham
Joseph Broughton
Pat Brouillette
Julie Harding Brousseau '74
Chevahn Brown '10
Constance Brown '67
Elizabeth Young Brown '56
Elizabeth Brown '87
Ellen Morse Brown '57
Dawne and Fitzroy Brown P'10
Haley Brown
Helen Brown '62
Jean Brown '92
Jenifer Brown '04
Liese Fritze Brown '96
Mary Lanman Brown '46
Judy E. Garber and Myles A. Brown P'04
Sandra DeJong and Stuart Brown P'12
Annette Browne '69
Juliet Browne '80
Katherine Ann Brucker
Cynthia Coull and Martin Brunswick P'21
Eliza Hawkey Buck '94
Casey O'Donnell Buckley '07
Adele Sage Budovsky '98 and
Justin Budovsky
Jean Fitz Buffum '41*
Sydney Hinkle Buffum '48
Diane Buhl
Katherine Bulger '11
Zoe Bulger '11
Marisa Bulkeley '10

Ethel Bullitt '93 and
Colin Devonshire P'23
Louisa de Roethth Burdette '87
Cailin Burke '99
Caroline Burke '07
Jessica Burke '07
Catherine and Matthew Burke P'07
Mary and William F. Burke, Jr. P'99
Amy Winsor Burnes '69
Louisa Burnham '82
Gertrude Trumbull Burr '41
Jody Burr '88
Ellen Burrows '66
Sarah Burrows '74 and Daniel Borden
Mary Curtis Burrus '40
Daphne Burt '74
Bernadette Schepens Butler '63
Ann Shocket Buxbaum '50
Alice Byrd '52
Elizabeth Byrne '10
Susan Hockfield and Thomas Byrne P'10
Sara and Tim Cabot P'19
Victoria Thaler Cabot '83
Elizabeth Wilder Cady '48
Victoria Field Cahill '72
Amy Cahners '73
Mary Lane Connolly Cairns '52
Erin Calamari
Anne Caldera
Saveria Spagnuolo Callagy '90
Jacqueline Callahan '15
Susan and Joseph Callahan P'11, '15
Kayla Camacho '15
Mary Cameron
Ann Welch Campbell '56
Tessa Campbell '07
Elizabeth Bartow Campen '54
Teresa M. Canavan P'03
Elizabeth Canavan-Palermo '03
Corinne Candilis '13
Maura Shannon and Philip Candilis P'13
Penelope Greenough Caponigro '46
Miriam C. Carlisle P'91, '93, '99
Mary Jimenez and John Caro P'22
Mary and Edmund M. Carpenter GP'15
Lisa Sibert Carr '86 and Peter A. Carr P'19
Rosamond Whitney Carr '49
Julia Carrizosa '09
Dorothy E. Carroll GP'06, '08
Grace Carroll '14
Catherine and John Carroll P'14
Allison Carter '12
Jennifer Carter P'12
Patricia and Joseph P. Cascio
Susan and Michael Cashton
Kate Caspar
Anna Coquillete Caspersen '88
Wendy Cass '89

Rachel Casseus '02
Sarah Casseus '96
Julianna Castro '15
Laura Castro P'15*
Carla Cataldo '80
Meredith Catchings '15
Roberta and Phillip Catchings P'15
Catherine Counselman Catucci '94
Mary Lindsay Cerulli '12
Nicole Cerulli '16
Elizabeth Cornish Chamberlain '95
Denise Chamberland
Liz desCognets Champagne '75
Jennifer and Andrew Chan P'23
Margaret Cutler Chandler '61
Ellen and Yan Chang P'19, '22
David Chapin P'08
Elizabeth Chapin '62
Emily R. Chapin
Kinne Chapin '08
Jane Chaplin '82
Margaret Chaplin '80
Carolyn MacDuffie Chapman '92
Judith Chapman '59
Marie Pierce Charles '49
Terry and Christopher Charron P'17
Andrea Chase
Jane Money and Christopher Chase P'08
Gillian Chase '08
Lavinia Bosworth Chase '64 and
Edith Springer P'96
Nupur Chaudhury '01
Candace Cheatham P'21
Catherine and Edward Chen P'17
Xiaochun Liu and Jian Chen P'13
Joanna Chen '16
Mary and Jonathan Chen P'19
Kelly Chen '13
Li Chen and Cindy Gao P'16
Ling Xu and Tong Chen P'18
Brittany Chenenko
Martine Cherau '62
Yanick and Alex Cherenfant P'13, '16
Chelsea Cherenfant '13
Diana Prout Cherot '58
Chestnut Hill School
Elizabeth Perry Chick '64, P'89, '92
Peter C. Chick P'92
William Childs
Justine Chilvers-Fang '04
Yan Huang Chen and See Jun Chin P'11
Victor Chin and Stella Lee P'19
Kara Chisholm '96
Kasia Chmielinski '02
Tsun and Robert Chmielinski P'02
Jane Harte Choate '37
Meshal Kirmani Chohan '92
Teresa and Douglas Chope P'16
Margaret Chory '13

Sara Christensen '92
Margaret Raye Christmas '57
Catherine Chu '03
Indu Chugani
Chaeyoung Chun '16
Ann Chapman Churchill '56
Jennifer Ciccarelli and Chad Perry
Lucia Cies '66
Meghan Gallery Civiello '02
Sarah Morris Clanton '83
Alexandra Clark '08
Elizabeth Clark '68
David Clarke
Julia Clarkson '88
Elena Isabel Claro '11
Lee Ann and Francis Claro P'11
Anne T. Cleary and Robert B. Cleary* P'96
Hannah Coolidge Clements '53
Laura Wolkoff Clote '04
Anne Garmey Clutz '82
Barbara Fitch Cobb '66
Alexandra Coburn '82
John F. Coburn, III P'04
Julia Coburn '04
James Cochener P'22
Sarah Meigs Cody '42 P'65*
Fiona McNiff Coffey '98
Eleanor Edmonds Cogswell '52
Eleanor Cogswell '50
Erin Cohee '12
Teri and Kevin Cohee P'12
Peter Cohee
Anne Cohen '57
Laura Cohen
Virginia Baerst Colamarino '02
Connaught O'Donnell Colbert '85
Barbara Draper Cole '53
Kathy Cole and Jim Geisman
Sarah Coleman '11
Shelley Coleman '69
Laura and Steven Coleman P'11, '16
Adrienne Collatos '05
Alexis Collatos '03
Catherine Collins '68
Honora Collins '96
Mr. and Mrs. John Collins GP'09, '13
Lucy Collins '60
Lorraine Hanlon Comanor '62
Anne Morss Combs '54
Erin Daoust Comella '92
Kirstin Yogg Comerchero '95
Marilyn Como
Sarah Condon '16
Rita Platt Coney '50
Priscilla Nash Conger '40
Lindsey Conkey '07
Elizabeth Driscoll Conklin '75
Brianna Connolly '04
Caitlin Connolly '01

Katie Connolly '96 and Sander Cohan
Anne and John P. Connolly P'96, '97
Julianna Connolly '97
Lynda and Michael Connolly P'97
Susan Connors GP'20, '22
Wendy Burns Conquest '65
Deirdre Conroy '95
Joshua Constant
Norma Massarotti and
Maurizio Contini P'19
Anastasia Contos '94
Maureen Duane Convery '51
Alison Conway '10
Maeve Conway-Pearson '15
Lauren Conway-Russell
Adrienne Conza '16
Alexandra Conza '14
Teresa and Michael Conza P'14, '16
Anne Calkins Cook '41*
Eleanor Kerns Cook '33*
Justine Jacoby Cook '78*
Sarah Chamberlin Cook '42
Sheila Gamble Cook '37
Georgina Coolidge '04
Mary H. Coolidge '73
Angela Coombs '06
Gloria W. Coren P'03
Eleanor Cornell '15
James Cornell P'13, '15
Schuyler Cornell '13
Emily Agoos Corpuz '68
Ann Curtis Corte '54
Ann F. Cote P'83
Emily Geanacopulos Coughlin '80
Karen Cowperthwaite '81



“I feel such a personal connection and such a deep feeling of gratitude toward Winsor. More than any other place, this is where I was nourished and challenged and supported. And when you're given the most incredible gift you just need to give back.”

Claire Pasternack Goldsmith '01

Jane Jewell Coxe '46
Dorothy Mixer Crabb '61
Gabriella Cramer '14
Donna and George Cramer P'14
Lauren Crasco '89
Carter Crawford '56
Kim and Keith Crawford P'16
Margaret Harding Crawford '89
Kathleen Creel '05
Sally Murray Crissman '55
Gertrude Shaw Crittenden '39
Courtney Cronin '07
Lauren Bianchi Cronin '91
Ruth Cunningham Cross '44
Meghan Crowe '90
Sara Crowe '94
Ariane Cruz '95
North Lyman Cunningham '66
Nicola Cuoco '07
L. Adrienne Cupples and
John E. Cupples P'91, '98
Amy Cupples-Rubiano '91
Margaret Thompson Curtis '89
Sandra Adams Curtis '65
Suzanne Cote Curtiss '83
Margaret Cushing '59
Ann Hornor Cutter '45
Nancy and Frederick Cyker P'14
Adeline Johnson D'Amonville '46
Bonnie Fendrock and Alan D'Andrea P'12
Erika D'Andrea '12
Alison D'Angelo
Fay Dabney '46
Lilly Dagdigian '04
Christine Dailey '89

* Deceased

SUPPORTERS (continued)

UNDER \$10,000

Susan Dodge Daiss '68
 Amy Daley '88
 Suzanne Daley '92
 Katherine Dallow '90
 Ceronne and George Daly P'19
 Lydia Damon '06
 Maria Damon '73
 Marcia and Peter T. Damon P'04, '06
 Jane Danahy '83
 Suzanne Noel and Bob Danahy P'83
 Elizabeth Dane '58
 Nina Danforth '68
 Faith Danglo '15
 Jeff Danglo P'15
 Cynthia Darling-Fisher '67
 Kathleen Emmet Darman '60
 Lauren DaSilva '15
 Ariadne Daskalakis '87
 Martha Davenport '77
 Elaine and Carl David
 Julie Lin and Frank David P'22
 Anna Davidge '16
 Katharine Davidge and
 John Dorfman P'16
 Alethea Davis '92
 Caroline Davis '06
 Lisa and Daniel Davis P'12
 Elizabeth Canham Davis '60
 Pauline H. Davis
 Zoe Davis '12
 Abigail Cole Dawkins '56
 Marilyn Dawson '71
 Abigail Day '96
 Caroline Day '92
 Christina Whelton De Castro '87
 Rina Castillo and Ted de Castro P'19
 Anne Batchelor De Grazia '52
 Barbara Rowe de Marneffe '48
 Gabi and Roberto de Oliveira Castro P'22
 Leah Fish de Sacerdote '99
 Giovanna De Vito '16
 Lisa and Joseph De Vito P'16, '18, '23
 Anne Deane '07
 Josefina Bondoc DeBaere '75
 Barbara Deck P'09
 Irays Santamaria-Dehni and
 Walid Dehni P'21
 Anna Deknatel '01
 Erin Delaney '94
 Helaine Weisberg Delphin '63
 Camille DeMarco
 Leah Demetri '09
 Alice Chick Dempsey '89
 Laura Denman '08
 Stephanie Plent and
 William Denman P'08
 Andrea Cherkerzian Dennigan '96
 Vanessa Roskothen Dennison '87

Kelsey Derby
 Prarthna Desai '07
 Robin Deutsch P'01
 Jane and Stephen Deutsch P'07
 Bruce Devon and
 Veronica Nanagas-Devon P'94, '99
 Octavia Devon '94
 Leslie Dewan '02
 Shenbagam Dewar and Rajan Dewar P'19
 Meredith and Terry DeWitt P'21
 Mary Ann Dexter '64
 Meera Mahalingam and
 Jagdish Dhingra P'14
 Kirstin DiCecca '04
 Christine Monahan DiCenso '88
 Aaron Dickson '98
 Brian J. Didier
 Subba Digumarthy and
 Nagamani Peri P'20
 Donald Bloch and Lisa Diller Bloch P'12
 Irene and Meyer Diller GP'10, '12
 Susan Dillon '07
 Maria Scott DiMaggio '81
 Verlinda and Stephen DiMarino P'17
 Maura Driscoll Dinan '83
 Adrienne Lee Dinh '03
 Julie and Ousmane Diop P'22
 Anne DiSalvo '03
 Katherine DiSanto '09
 Charlotte Reece Disston '73
 Martha Young DoByns '87

Nancy Dodson '52
 Kathryn E. Doebler '06
 Alice Williams Doherty '54
 Maggie Doherty '08
 Kathleen and William T. Dolan
 Sheila Donahue P'83
 Kristen Shea Donahue '90
 Katherine Donham '10
 Abigail Donovan '94
 Catharine-Mary Donovan '51
 James and Cornelia Donovan P'87, '94
 Susan and Michael Donovan P'19
 Erin Dorokhin
 Eleanor Jones Dorsey '42
 Hadley Morash Douglas '92
 Elizabeth Harwood Dow '64
 Catherine and Sean Dowd P'18, '20
 Laura Shapiro Dowling '68
 Regis Downes
 Mairead and Christopher Downey P'15
 Robin Jordan Downey '83
 Laurie and Christopher J. Doyle P'00
 Ellen and David Drachman GP'15
 Joy Drachman '88
 Eliza Hurd Drake '99
 Virginia Draper '60
 Margaret Lawrence Drinker '51
 Erin Driscoll '10
 George F. Driscoll and
 Mary Jane Houlihan P'10
 Lisa and Timothy Driver P'16



“I know with certainty that it was my education at Winsor that allowed my authentic self and voice to develop. In this environment, my self-concept flourished, my sense of self was nourished, and I was empowered. This shaped my understanding of what girls and women are capable of.”

Christina Capodilupo Schwefel '97

Elizabeth Drolet
 Marjorie and Gerard Drucker GP'18
 Mary and David Dubosky
 Katherine and Brian Duckworth P'17
 Ada Frances Risley Duffus '45
 Amanda Duffy '05
 Janet Duggan
 Jacqueline Dumornay '15
 Yvonne and Louis Dumornay P'15
 Anastasia Thannhauser Dunau '37
 David Duncan and Jill Carrier P'08
 Sarah Duncan '08
 Penny Fisher Duncklee '55
 Helen Dunn*
 Karen O'Brien and Ian Dunn P'19
 Patricia Green Dunn '71 and
 Stephen Dunn P'98
 Diana Dunnan
 Anne Stack and Timothy Dunnbier P'14
 William W. Dunnell, III
 Sarah Dunworth '06
 Janet B. Duval P'19
 Deborah and Daniel Dwight P'10
 Susanna Dwinell '89
 Kristin Dwyer '94
 Eastern Bank Charitable Foundation
 Melinda Hall Eaton '62
 Elizabeth Eavey '98
 M. Sheila Desmond and
 Roland D. Eavey P'98
 Maya Ebsworth '12
 Nancy Tuck Echlov '70
 Harriett Eckstein P'80, '84
 Ann Epstein and Bernard Edelstein P'13
 Charlotte Edelstein '13
 Beatrice Hallowell Edgar '59
 Campbell Edlund P'14
 Jessen Edlund '14
 Iris and William Edlund GP'14
 Zoe Edmonds '09
 Nichole Edraos '87
 Amina Edwards '11
 Gail and George Edwards GP'13
 Amanda Egan '09
 Kathleen Egan '13
 Neva Egloff '01
 Martha Matson Ehlers '64
 Nancy Donovan and Elliot Ehrich P'12
 Fiona Ehrich '12
 Bettina and Arnout Eikeboom P'23
 Suzy Shuster Eisen '90
 Lisa and David Eisenbud P'17, '19
 Patricia Schneider Ekman '74
 Katherine Elfers '14
 Bethany Elliott '02
 Tamsin Elliott '76*
 Priscilla Ellis '61
 Helen Harding Elmer '42



“The essential core of what makes Winsor great has remained unaltered. It is a school that gives girls the confidence to go forward in life just being themselves, that encourages them to follow their curiosity, that teaches them the value of hard work, of the need to take social and personal responsibility.”

Karen Clark and Pankaj Tandon P'05, '08, '10

Anne Wallace Elvins '55
 Anne Johnston Elwell GP'11, '18
 Penelope Greeley Elwell '58
 Christine Emello '12
 Deborah and Paul Emello P'12
 Anne Emerson '64, P'88, '91
 Ann Badger Emery '55*
 Diane Neal Emmons '51
 Kristin Wise Emy '86
 Eleanor Morss English '36
 Eva Epker '13
 Karla Ericson '86
 Sarah Ernst '07
 Katherine Stevens Ertel '01
 Adela Esposito '07
 Kathryn Estes '01
 Trisha Cunningham Estill '92
 Bitu Tabesh and Carlos Estrada P'21
 Chloe Evans '11
 Hannah Evans '13
 Molly Evans '12
 Taylor Evans '09
 Donna and Thomas Evans P'12, '13, '17
 Theresa Evenson
 EverTrue
 Caroline Busk Everts '42
 Margaret Howe Ewing '47
 Laura Ewing-Mahoney
 Grace Eysenbach '16
 Lindsay Eysenbach '10
 Darlene Eyster '72
 Christiane F. Fabricant

Cassandra Fach '10
 Gail and Randall Fach P'10
 Lorena Brigham Faerber '60
 Stephanie Quinn Fallon '89
 Elizabeth Moore Faria '76
 Nancy Faris '87
 Caroline Farkas '11
 Mark Farrell
 Christina Spiliou Farren '95
 Ruth and Louis Farrugia P'99
 Lynn Farrugia '99
 Grace Faturoti '02
 William Fausek
 Amory Fay '62
 Christine Fazzone P'18
 Nichole and Malcolm Fearon P'20
 Linzee Amory Feigenbaum '01
 Elizabeth Nickrenz Fein '95
 Stephanie Shemin Feingold '97
 Alexandra Feldberg '04
 Kirsten B. Feldman
 Leigh Feldmann '09
 Alix Mackie Fellows '49
 Joyce Narins Fensterstock '66
 Chantal Ferguson '09
 Emi Ferguson '05
 Jean Dwinell Ferguson '55
 Miranda Loveman Ferguson '94
 Sophia Ferguson '07
 Emilia Ferrara '15
 Jan and Joseph Ferrara P'11, '15
 Windsor Rose Ferrara '90

* Deceased

~ Family Gift

SUPPORTERS (continued)

UNDER \$10,000

Allen Ferrell and Rose Zhao P'21
Lea Trumbull Ferris
Patience Ferris-Sandrof '66
Ashley Ferullo '01
Marguerite and William Ferullo P'97, '01
Sharon Hartridge Fettus '55
Ana Timas Fidalgo P'07, '14
Janice Fidalgo '14
Joceline Fidalgo '07
Jodi and Samuel Figler P'18
Danielle Figueira
Emma Finder '12
Michele A. Souda and Joseph Finder P'12
Carol Rosenberg and Alan Fine P'13, '15
Leslie and David Fine P'07
Eva Fine '15
Isabel Fine '13
Elizabeth-Anne Finn '94
Paul W. Finnegan P'93
Jill Galvani Finnerty '90
Phoebe Fischer-Groban '02
Hallie Fischman '15
Laura Fischman '87
Nancy and Steven Fischman P'87
Emily Fish '05
Jacqueline Fishbein '02
Dana Marshall Fisher '97
Martha Potts Fishman '80
Frances Fitch '68
Priscilla Fitch '62
Mary-Louise Dewey Fitzgerald '75
Barbara and Paul Fitzgerald
Reid Fitzgerald '04
Ann O'Meara and Bernard Flanagan P'93
Thomas Flanagan
Caroline Simonson Flanagan '03
Zoe Flavin '13
Mary and Francis Fleming P'08
Madeleine Fleming '08
Madeleine De Gogorza Fletcher '56
Emily Flier '00
Lydia Flier '07
Sarah Flier '96
Katherine Flynn '96
Elisabeth Green Fogarty '58
Kimberly and Kenneth Fogarty P'19
Marjorie Folkman '87
Nancy Smith Foote '39
Anne Forbes '36
Diana Forbes '50
Lorna Forbes '65
Marjorie Forbes '52
Pamela Forbes '60
Susannah Ford '06
Christina Forde '03
Janel Forde '97
Deborah Banks Forrest '87

Claudia Forrester '14
Iona Forrester '16
Courtney and Michael Forrester P'23
Joan Jackson Forte '42
Mary and Mark Forti P'19
Barbara Butler Foster '72
Daphne Strong Foster '75
Les Ryburn Foster '71
Mary Gould Warren Foster '50
Gretchen and Barry C. Fougere P'14
Madeline Fougere '14
Floyd Fowler, Jr. P'89
Anne Fox '10
Emma Fox '07
Jocelyn Fox '02
Celia Francis '83
Elissa Gordet Franco '80
Deborah Wait Fraser '52
Sharon Wasserman Freeman '91
Carol Stokes Fremont-Smith '63
Courtney French '94
Bessie Frias '14
Elsa Cruz and Hector Frias P'14
Channing Frick '14
Shirley Rozen Fried '60
Elizabeth Friedman '87
Mark Friedman and Carolyn Gideon P'20
Alexa Friedman-Cohen '01
Judy Bishop Friend '58
Kelly and Andrew Friendly P'21, '23
Jennifer Harding Fritz '96
Cynthia Frost '73
Pollie Thompson Frothingham '50
Hailey Fuchs '16
Anne Fulginiti '77
Margaret Fulham '10
Nancy Stevens Fuller '50
Karen Funkenstein P'99
Julia Furman '01
Mary-Louise Howard Fye '66
Abigail Gabrieli '13
Karin Gaensler '73
Shirnett and Krishnaswamy Gajaraj P'13
Rohini Gajaraj '13
Jessica Bloom Galen '03
Erin Gallery '04
Jill and Bob Gallery P'02, '04
Amy Gallese '99
Anne Laverack Gallivan '67
Carol Weston Galloway '52
Sheila and Paul Galvani P'90, '94
Susan Galvani '94
Fay Gambee
Elizabeth and Edmund B. Games, Jr. P'81
Caroline Gammill '03
Lydia Gammill '08
Margaret Gammill '05

Cecilia Gandolfo '78
Julia Gangemi '14
Lyle Gangemi '11
Martha and Michael Gangemi P'11, '14
Elizabeth Ennen and
Randall Ganiban P'18
Dalia Ganz '01
Charlotte Gardiner '09
Janet Gardiner
Mary Short Gardiner '58*
Josephine Perry Gardner '37*
Deborah and Philip Gardner P'21
Tamson Gardner '65
Anne Garfield '73
Mr. and Mrs. Ronald Garmey P'82, '84
Gisele and Levi Garraway P'23
Claudine Madras Gartenberg '92
Cecelia Gassner '90
Kaitlin Yaremchuk Gastrock '00
and Darren Gastrock
Cara McLaughlin Gavin '92
Chloe Gavin '72
Amy Gaylord '08
Deborah Zuckerman and
David Gendelman P'09
Hannah Gendelman '09
Denise Pelletier and
Lawrence Gennari P'22
Dianne Georgian-Smith '74
Janice Gepner
Sophia Gergely '63
Karen Geromini
Marianne Gersdorf '67
Ara Gershengorn '89
Sarah Gessner '92
Deborah H. Gevalt P'98
Alison Butler Geyer '75
Rhea Ghosh '05
Kim Giangrasso
Abigail Giannuzzi '12
Elizabeth Giannuzzi '09
Margaret and Robert Gibbons P'06
Vera Converse Gibbons '51
Nicole Gibran '77
Elaine Gibson P'06, '08
Elizabeth DeFriez Gibson '69
Thatiana and Matthew Gibson P'21
Reann Gibson '08
Alexandra Giese '04
Caroline Giese '07
Anne Gifford '03
Barbara Benedict Gifford '44*
Enid Fessenden Gifford '42
Nelson S. Gifford P'83
Edes P. Gilbert P'78, GP'06
Margaret Ray Gilbert '64
Whitney Hallagan Gilchrist '99

Susan Greer Gildar '73
Allison Broome Gile '87
Emma Gillespie '05
Gail Hugenberger Gillies '60
Frank Gillon GP'12, '13
Liesl Cracknell Gilman '88
Jane C. Gilman P'88, '89, '93
Alice Gilmore '06
Ann Smith Gilmore '37*
Andrea and David Gilmore P'03, '06
Emma Gilmore '02
Julia Loscalzo Giordano '93
Meghan Sullivan Girard '01
Anne White Girian '85
Lorna Pier Giron '79
Constance Girvan '07
John and Diane Gittinger P'92, '97
Rebecca Waters Glavin '03
Tavia Glenn P'20
Laurie Glimcher '68
Ann and Damien Glynn P'23, '24
Katherine F. J. Glynn '00
Janet and Henry Goddard P'22
Julie Anne Decker Goetze '54
David E. Golan and Laura C. Green P'01
Amy Sheiber Gold '87
Elizabeth Janeway Gold '56
Lesley Gold '89
Hayley Goldbach '05
Sydney Resendez and
David Goldberg P'20
Kristin and Brian Golden P'19
Gayle Zelmeyer Golden '61
Ruth and Irving Goldenberg GP'12
Anna M. Goldenheim '02
Robin and Richard Goldenson P'19, '21
Reeve and Samuel Goldhaber P'99
Eiblis Goldings '81
Anne Ipsen Goldman '52
Lauren Goldstein '07
Sandra Ziman Goldstein '69
Molly Gibbons Golinvaux '06
Evie Golomb-Leavitt '12
Alina Gomes '02
Antonia Gomes P'19
Haitao Gong and Susan Zhou P'20
Luisa and Raymond Gonzalez P'11
Mary-Margaret Lyman Goodale '44
Trelawney Nichols Goodell '57
Janet and Michael Goodman P'14
Sarah Goodman '14
Anne Chick Goodrich '92
Annie Goodridge '14
Hillary Goodridge P'14
Julie Goodridge P'14
Sophie Thomas Goodwillie '95
Kathleen Goodwin '08
Carol and Jack Goralnik

Sharon Gorberg and
John Holohan P'06, '09
Dorienne Gordon '14
Ellen Gordon P'70, '71, '75, '87, GP'13
Maya Gordon '16
Michelle Gordon P'14
Naomi Gordon '14
Natasha Gordon '08
Wendy Gordon '75 and Larry Rowe P'13
Victoria M. Griffith and
Vinicius Gorgati P'14, '17
Roger B. Gorham
Sandra and Scott Gorham P'21
H. Jessica and Andrew Gosman P'13
Sabrina Gosman '13
Deborah Lotterman and
Gordon Gossage P'18
Vinita Goswami '97
Melinda Gottesman '97
Kevin Grady
Nancy Webster Grady '44*
Gretchen Bauer Graef '57 P'99
Jennifer G. Graham
Olivia Graham '15
Maira Sullivan and Richard Graham P'15
Sherren Granese
Kate Grant
Helen Grassi
Amy Gray '92



“Whenever I come back there is always something that reconnects me with a higher sense of purpose. I feel that is something uniquely Winsor that has stayed with me — that question of what kind of woman are you going to be in the world. How do you use your intelligence and your character and your voice to make your community and the broader world a better place?”

Meredith Benedict '88

Frances Pratt Gray '48
William Grealish
Mary Laura Tanner-Greely '79 and
Grant I. Greely
Betty and Alan Green GP'15, '17, '19
Elisabeth McSherry Green '56
Elise Green '12
Jennifer Stone and
Jonathan B. Green P'12
Lisa Sharf Green '80
Melissa Greenberg '08
Rosalind Segal and
Michael Greenberg P'07
Anne Frank Greene '66
Virginia King Greenwood '71
Nancy Greep '62
Alison Greer '83
Nancy and Gordon Greer* P'83
Laura Gregory
Sarah Donahue Greiner '83
Gerry Grice P'96
David Griffin
Sophia Griffith-Gorgati '14
Lucy Lowell Grimm '47
Gretchen Grimshaw
Joan Griscom '48
Beth and Joel Gross P'14
Katherine Gross '14
Debra Grossman '04

* Deceased

~ Family Gift

SUPPORTERS (continued)

UNDER \$10,000

Patrick McVay and Kathryn Grossman
Margot Sullivan Grosvenor '48
Connie Gu '11
Felix Guadalupe
Gianna Guarino '11
Viola Guarino GP'11
Erin Sousa Guden '96
Anny Guerra
Ernesto Guerra and Paola Uccelli P'16
Isabella Guerra Uccelli '16
Kristine Guleserian '86
Cynthia Madras Gumbert '87
Anushree Gupta '13
Jenna Gustafson '15
Cathy Guttentag '84
Catherine Guydan '01
Elizabeth and David Guydan P'01
Constance Walker Haddleton '47
Cheryl Hagan '13
Patricia Cleaver Hager
Alyssa Moskos Haggerty '94
Michelle and John A. Haigh P'16
Jessica Vasconcellos Haire '01
Melina Hale '88
Mia and Mark Halfman P'23
Caroline Hurlbut Hall '62
Caroline Hall '01
Jane and Gary Hall P'01
Amy Linenthal Halliday '81
Julia Kosasky Hallisey '79
Elizabeth Stuart Hallowell '68
Natascha Simpkins Halpert '53
Danielle Le Hals '03
Ethel McFarlan Hamann '58
Katherine Hamblet
Cynthia Peterson Hamblett '85 and
Frank Hamblett P'18
Meghan Cleary Hamilton '96
Bard and Richard Hamlen P'82, '85
Sara Hamlen '82
Becky and David Hamlin P'10
Marguerite Hamlin '10
Rosamond Greeley Hamlin '54
Sylvia Hammer
Sarah Graves Hammerness '54
Catherine Hammond '61
Corinna Finley Hammond '57
Juliet Young Hancock '61
Maria and Peter Handrinos P'22
Edith Stetson Hankins '55
Lyra Ward Hankins '76
Hollis Hanley '09
Gabrielle Hanna '77
Grace Hanrahan '14
Lynn and John Hanrahan P'11, '14
Mary Aidan Hanrahan '11



**“From my first day as a Winsor student,
I began developing a network of love, loyalty and
support that remains with me to this day. We all have
our own stories, our own individual connections
to Winsor that drive our desire to give back.
As alumnae, I believe we give so generously
because Winsor is family.”**

Mary Gallagher '94

Linda Hansen
Nancy Hansen '58
Lilyann Pearlman Harder '00
Louise Dickson Hardie '48
Katherine Harding '85
Danielle Haroon '02
Virginia Balch Harlan '50
Marla Capozzi and Timothy Harned P'23
Kimberley Harol '83
Jessica Harrelson '01
Lawrie Ryerson Harris '60
Lynn Harris '86
Mary Hill Gilbert Harris '56
Susan and P. R. Harris, Jr. GP'12
Stephanie Towle Harris '95
Rabbi Susan Harris P'03, '05
Eliza Cope Harrison '54
Julia Wells Harrison '77
Michele and Jack Hart P'15, '17, '19, '22
Lynne Kiefer Hartell '57
Birgit Hartje P'15
Anika Hartje Brissot '15
Edith Churchill Hartshorne '55
Claire Harvey '07
Daphne Harwood '58
Ann Elwell Haslett '53
Sally A. Hatcher
Caroline Haussermann
Frances Tripp Hawkey '64 and
Michael Hawkey P'94, '97

Yvette and John Hawkins P'22
Clare Hawthorne '02
Emily Haydock '02
Judy Hayes '88
Barbara and Samuel Hayes, III P'88
Meghan Hazard
Elizabeth Berman Hazen '72 and
Edward Hazen
Ji He
Elisabeth Healy '88
Elizabeth Sutton Healy '61
Anne and Gerald B. Healy P'88,
'91, GP'23
Mary and Michael Hearle P'18
Sarah Lincoln Heartt '75
Sarah Stevens Heckscher '53
Nancy Heer GP'18
Angela and Paul Heffernan P'82, '83
Prudence Law Heilner '73
Alison Hower Heins '58
Heidi Hellmann '86
Emily Bulian Helmes '74
Kristiana Helmick '87
Edith Fitz Hemenway '44
Hannah Bradley Henderson '45
Roberta Henderson-Horn '76
Courtney Walker Hendricson '94
Beth and Gregory Herbster
Jeannette Herrmann '75
John Herron, Jr.

Virginia C. Hesel
Mary Jo Moore Heyl '70
Joan Hiam '77
Allison Holgate Hibbs
Hope Potter Hickok '46
Ellen Monks Higgins '45
Devon Whitmore Hildreth '63
Kaitlyn Hill '15
Marci Hill '89
Susan and Mark Hill P'15
Nancy Moore Hill '54*
Mathilda Hills '50
Barbara Smith Hilty '36
Macie Finkelstein Himmel '80
Elizabeth Barrett Hinkle '57
Sarah Ropes Hinkle '58
Carolyn and James T. Hintlian, Jr. P'15
Katherine Hintlian '15
Claudia Cottle Hinz '86
Elizabeth Hiss '13
Mary and Robert Hiss P'13
Natasha Hochberg '92
Jacqueline O. Hodge P'18, '22
Joanna Bailey Hodgman '50
Alexander Hoerman
Jennifer Hoffman '89
Margaret Connolly Hoffman '47
Perry Hoffman
Joan and Peter Hoffman P'00
Louise Greep Hogan '53 and
William Hogan P'83
Laura Banfield Hoguet '60
Frances Hiam Holbrook '54
Sarah Cannon Holden '62 and
Lawrence T Holden P'97
Sarah Holden '79
Susan Conant Holden '49, P'79, '82
Nicholas Holekamp
Carol F. Feeny and
Adam Holland P'18, '22
Ann-Marie Holland
Ann Hollingsworth '77 and Harry Hanson
Caroline Hollingsworth '70
Elizabeth Parker Hollister '63
Kris and James Holmes
Molly Morse Holmes '61
Olivia Holmes '62
Janelle Holmes-Green
Elizabeth Holohan '09
Audrey Holt '12
Carol and Dexter Holt P'12
Carolyn Holthouse '13
Jennifer Holthouse '12
Marilyn Holthouse GP'12, '13
Cynthia and Mark Holthouse P'12, '13
Elizabeth Holtzman '06
Susan Holzman '67
Edith Homans '69

Elizabeth Flint Hooker '95
Elizabeth Eames Hooper '46
Belinda Walters and
Donald Hootstein P'16
Erica Hootstein '16
Anne Hopkins '48
Caroline Parker Hoppin '55, GP'09
Elizabeth Landy Horak '93
Harriet Hornblower '64
Hannah Horobin '13
Joanna Horobin P'13
Alexandra Horvitz '11
Martha Paton and H. Robert Horvitz P'11
Sherry Thomas and Derek Hosea P'22
Susan Hedge Hossfeld '38*
Helen-Anne Babiy and Brian Host P'23
Cindy Chen and James Hou P'22
Natalie Houghton '64
Sylvia Houghton '63
Laura R. Houlette
Taylor Houston '15
Tonia Bentley-Houston and
William Houston P'15
Cynthia Russell Howe '63
Eunice Howe '65
James Howe
Teresa Masterson-Howe and
John Howe P'10
Susannah Howe '14
Willa Howe '10
Margaret Howland '62
Hannah Hoyt '08
Helen Hoyt '14
Phoebe Hoyt '72
James S. Hoyte P'86
Kirsten Hoyte '86
Scotia Ryer Huang '92
Katharine Hubbell '39
Priscilla Hudson '66*
Jeannette Huey
Christine Hughes
Kathrine Ranere Hughes '97
Lisa McNamara Hughes '83
Michele Aristegui Huie '89
Kristine Hung '90
Elizabeth Hunnewell P'84, '89
Evelyn Byrd Hunnewell '89
Edith and H. Hollis Hunnewell P'76
Luisa Hunnewell '71
Maria Luisa Hunnewell P'71, '80,
GP'17, '19
Janice and Roger Hunt P'73, '76, '84
Victoria Wells Hunt '56
Annie Huntoon
Louise Wright Huntoon '67
Meilyn Huq '13
Cristina Chan and Nazmul Huq P'13, '15
Nancy Gannett Hurlbut '56

Blair Hurley '05
Deirdre Hurley '14
Mary Bulger Hurley '84 and
Michael Hurley P'14
Anne Hutchinson '62
Georgie Sawyer Hutton '63
Sobin and James Hwang P'21, '23
One Kim Hwang '00
Julie Danforth Hyde '64
Nanda Hydrisko
Alice Merrill Hyland '65
Emily Hyman '09
Julia Hyman '11
Barbara Bierer and
Steven Hyman P'09, '11
Akiko Ichikawa '90
Sandrine Colson-Inam and
Arun Inam P'11, '14
Sonia Inam '14
Abigail Ingalls '05
Margaret and Edmund Ingalls P'05
Judith Innes '59
Deborah Kittredge Irving '79 and
Bruce Irving P'12, '15
Emily Irving '12
Sara Irwin '70
Josephine Barnes Iselin '53
Alesdair Ittelson '04
Amelia Iverson
Katherine Caldwell Ives '64, P'94, '99
Allison Peters Jablonko '54
Lisa and Alden Jackson P'23
Christina Converse Jackson '59
Courtney C. Jackson
Martha Turner Jackson '40
Mary Eliot Jackson '58, P'00
Barbara and Steven L. Jackson P'99
Adriana Jacobsen '16
Beth Limon Jacobson '92
Jane Hollingsworth Jacobson '87
Mary Lee Jamieson GP'20, '22
Anne Janeway '54
Charleen Onanian Janian '94
Alicja and Pawel Januszewicz P'19
Jaques & Company
William Jaques
Sandra Jarrett P'09
Maya Jay '14
Gina and Hilaire Jean-Gilles P'21
Lindsay Mullen Jeanloz '00
Julie Roy Jeffrey '58
Eugenie Uhlmann Jeffries '83
Patricia Hurlbut Jenkins '60
James Jer-Don
Katherine Harper Jerstad '98
Natalie and Todd T. Jesdale P'87, '91
Aurora Jin '11
Yuanxin Xu and Ping Jin P'11

* Deceased

SUPPORTERS (continued)

UNDER \$10,000

Danielle Johns '05
Alexandra Johnson '07
Cara Grayer Johnson '93
Doris and Donald Johnson GP'15
Fionnuala Johnson '15
Laura Johnson '72
Joanne and Philip L. Johnson P'93
Priscilla Dwinell Johnson '65
Suzanne and Scott Johnson
Marion Ware Jolliffe '42
Elizabeth Higgins Jonas '03
Elizabeth Goodrich and
Andrew Jones P'17
Anstiss Dana Jones '38*
Cynthia Gruener Jones '48
Dorothy-Lee Jones '46
Ileana Jones
Janet Wright Jones '52
Jeremiah and Louisa Jones
Lorraine A. Jones
Lucy Wales Jones '55
Brett Jordan '08
Suzanne Joskow '01
Maren Judd '63
Melanie Kahn '95
Mary Webster Kampf '52
Dr. and Mrs. Charles F. Kane GP'03
Gwendolyn Kane-Wanger '80 and
David Wanger P'09
Lucy Kaneb '15
Elsa Kania '11
Louisa Kania '14
Martha Kanter '66
Craig Kaplan
Danielle Dwyer Kaplan '93
Virginia and Steven Kapner P'18
Mata Dova and Apostolos Karafillis P'13
Pavlina Karafillis '13
Joo Kim and Kamau Karanja P'20, '23
Alyssa Karbel '16
JoAnn and Howard Karbel P'16
Inger and Stefan Karlsson
Julia Karol '00
Dr. and Mrs. P.H. Kasarjian GP'14
Piya Kashyap
Nicole Kassissieh '91
Nancy and Frank J. Kaszynski P'92
Sabre Kaszynski '92
Pamela Blake Kates '76
Lisa and George Katz P'12
Gillian Katz '12
Mary Fainsod Katzenstein '62
Meara Kauffman
Caroline Gottesman Kaufman '01
Melissa Kaufman '05
Chris A. Kauth
Yuriko Isomura Kawagishi '72
Mary and David Kaye P'18

Jacqueline A. Kazarian
Amy Kean '88
Barbara Kean '82
Alix Miller Keating '91
Reed Keefe '02
Whitney Kufe Keefe '04
Frances Lawrence Keene '72
Andrea and Henry Keene
Frances Keyes Keidel '60
Christine and Terry Keigher P'18
Janet Reid Keller '57
Gail Kelley '76
Deanne Kelley-Halvorsen '86
Anina Terry Kellman '98
Betsy Kelly
Joan Quinn and Brian Kelly
Bruce Kelly P'12
Julia Kelly '05
Maura Kelly '10
Jacqueline and Robert Kelly
Christine and Sean Kelly P'10
Sophie Kelly '12
Mary Strekalovsky Kelsey '54
Anna Kendrick '05
Anna Kennedy '12
Andrea and Bradley Kennedy P'12
Mary Strange Kennedy '60
Nora Kennedy '07
Joan and Richard Kennedy GP'12
Annmarie and William F. Kennedy P'07
Marisa G. Kenney '02

Anya Keomurjian '16
Aline and George Keomurjian P'16
Andrea Dow Keough '81
Jodi S. Kerble
Kimberley Burke Kercheval '77
Kenidi Kern '08
Katherine Kester '13
Barbara and George Key P'90
Robin and Amin Khadduri P'17
Sara Khan '04
Sonya Khan '00
Tanya Khan '05
Sirena Khanna '16
Ruhi and Tarun Khanna P'18
Anuja Khettry '04
Sarah Khorasani '13
Sophie Khorasani '16
Emma Rose Kiefer '05
Elizabeth Kieff '91
Sheila and John Kilday
Meg Kiley '04
Marion Dusser de Barenne Kilson '54
Jasmine Kim
Johanne Kim '89
Eunha Jeong and Sang-Jin Kim P'17
Myung In and Woo Shik Kim P'13
Anna Kimble
Chloe King '05
Delancey King '14
L. Chloe King
Lillian King '03



“Miss Winsor saw the potential of educating young women, and I think Winsor is seeing how to do it even better every year. It’s always been on the cutting edge of education for young women, and I think it will continue to be with this really wonderful facility.”

Andy Leonard Macomber '47

Madeline King '07
Rachel King '81
Elizabeth and Rufus King P'03, '05, '07
Stephanie and Timothy D. King P'14
Sheila and William B. King P'81
Tara Kini '92
Artemis and John Kirk P'99
Rebecca Palmer Kirk '72
Joanna Madsen Kirtley '03
Shannon Kirwan
Steven and Sarah Kish P'20
Lillian Kivel '08
Nancy Morgan Kivel '78 and
George Kivel P'08, '12
Olivia Kivel '12
Michael Klagsbrun P'08
Nancy Germeshausen Klavans '67
Chloe Kliman-Silver '12
India Kline '13
S. Penny Windle Kline '87
Sommers Kline '10
Ruth Chute Knapp '60 and
Whitman Knapp P'86, GP'21
Ariella Knight '09
Andreea Stefanescu Knudson '00
Joyce Ho and Bing Ko P'17
Harriet Woodworth Koch '53
Lydia Walsh Kogler '96
Sarah Fink Kokko '01
Elizabeth Kokot '06
Laura Kokotailo '11
Sally and Philip Kokotailo P'11
Amy and Bill Kolb P'21
Hilary Kolman '89
Kimberly Shapiro Konigsberg '86
Sarah Knoff Konter '97
Rena Koopman P'99
Martha Lynch Kopanon '90
Dina Mesbah and Jonathan Koplos P'21
Rebecca Koppel '16
Donald and Joan Korb P'87
Lynne Cohen Koreman '86
Sarah Kornfeld '99
Anu and Rishikesh Kothari P'19
David A. Kourtz
Dorothy Edmonds Koval '62
Andrea Kozol '77
Stephanie Kozol P'77, GP'18
Ann Nowell Kramer '48*
Elisabeth Kramer '05
Jessica Krane '88
Julie S. Krathen '02
Alissa Goldhaber Krause '99
Tracy Cope Krawczyk '80
Sarah Kreckel '88
Lisa Krinsky '81
Renu and Jay Krishnamurthy P'16, '19



“We’ve reached a time in history when women are taking the lead to support their own institutions. My Winsor teachers taught me to stand up for what I believe in. And I believe very strongly in Winsor. It was in Winsor classrooms and on Winsor fields that I learned what it means to work hard, to challenge myself, to be part of a community, to be curious, to be a leader, to take responsibility, and to be generous-minded.”

Emily Smith Magruder '03

Pallavi Krishnamurthy '16
Jennifer and Adam Krueckeberg P'22
Katherine Krugman '03
Barbara and Edward Krupat
Barbara J. Katz and Francis Kubala P'06
Juhi Kuchroo '08
Elizabeth Kuentner '08
Hillary Mankin-Kufe and
Donald Kufe P'02, '04
Alexandra Kulich '15
Marianne and Ronald Kulich P'15
Margarida and Prem Kumar P'13
Sonia Kumar '13
Allison Walsh Kurian '91
Margery Geilich Kurtz '50
Zoe Kurtz '12
Belinda and Barry Kussman P'18
Jacqueline Kustan '06
Moon Kwoun and Jeannie Min P'20
Deborah Welch La Gorce '59
Rebecca Nixon Laberrenne '97
Denise C. Labieniec
Elizabeth Gittinger Lachance '92
Carolyn Lackey '79
Sarah Adam Lacombe '89
Maija Lahteenmaki '62
Julie Grant Laing '72

Mara Laird '93
Anne Channing Lamb '66
Ellen Zetzel Lambert '58
Joseph F. Lambert
Paul Lamontagne
Cynthia LaMothe
Margaret Seif and William Land P'18
Samuel Landau '83
Cye Landy*
Sylvia and Gene Landy P'93
Ilene Lang P'99
Nicola Lang '93
Penelope Lang '99
Sarah Lang '95
Victoire Keane Lang '84
Roy Langenberg
Ellory Laning '14
Annette and Mark Laning P'14
Cornelia Wheeler Lanou '48
Carol Johnson Laquer '67*
Maggie Larkin '12
Amy Neale and Timothy Larkin P'12
Lucinda Young Larson '69
Kendall LaSane '05
Elizabeth Adams Lasser and
Clifford Lasser
Catherine Coolidge Lastavica '49

* Deceased

~ Family Gift

SUPPORTERS (continued)

UNDER \$10,000

Rebecca and Dan Latimore P'17, '20
 Ann-Marie and Matthew Lawlor P'19
 Frederica Williams Lawrence '49
 Jane Burgin Lawrence '57
 Penelope Demos Lawrence '56
 Samantha Lawson '03
 Amy Le '10
 Nang Le and Manh Duong P'03, '10
 Jeffrey I. Leavitt P'10, '12
 Alice Lee '96
 Anissa Lee '14
 Caroline and David Lee P'14, '17
 Lucinda and David Lee P'96
 Deborah Lee '08
 Eleanor Motley Lee '39
 Hallie Stephenson Lee '69
 Helen Lee '89
 Yong Cho and Sang Lee P'19
 Susan Lee '86
 Joan McLaughlin and John Leeman P'22
 Robert and Ann Lees P'83, '85
 Sarah Lees '83
 Nancy Snow Leeson '41*
 Arabella Leet '83*
 Rachel Lefkowitz '82
 Katharine Leggat '73
 Patsy and Dick Leggat P'73, '75
 Sarah Leggat '75
 Evangeline Choe Lehr '97
 Janet Dorman Leighton '73
 Elizabeth and Kai Leissner P'22
 Karen Leiter '83
 Jessica Carroll Lemos '08
 Bonnie Downes Leonard '55
 Virginia Leonard GP'13
 Deborah and Scott Leone P'22
 Kenneth Leonetti and Susan Amster P'20
 Martha Lepcio
 Anne Lesburg '94
 Christine Lukacs-Lesburg and
 Charles Lesburg P'21
 Susan and Michael Lesburg P'94, GP'21
 Charles Lester P'19
 Vicki Lester P'19
 Carol and Mark Lev P'11
 Debra Leven P'15
 Suzanne Connolly Levere '76
 Caroline Morse Leverette '69
 Yamini and Benjamin Levitzky P'23
 Sarah Levy '89
 Jennifer Lewin '90
 Norah Lewin '03
 Alexandra Lewis '14
 Anne Lewis '03
 Joan Lewis '64
 Rose A. Lewis P'14
 Hui Wang and Chen Li P'22

Erina Li '13
 Helen Li P'18
 Anita and Hong Li P'13
 Linda Li '02
 Miranda Liang '14
 Brigitte Libby '00
 Beryl Benacerraf and Peter Libby P'00
 Beatriz Lichauco '15
 Trishia and Tomas Lichauco P'15
 Amy Lieberman
 Carol Friedman Lieberman P'85, '87
 Treacy Brine Liebich '86
 Patricia Calkins Lightbody '37
 Gail M. Lima
 Giselle Limentani '74
 Grace Lin '08
 Mesou Lai and Jarshen Lin P'15, '19
 Jessica Lin '15
 Sharon Lin '95
 Sharon Wei Zhang and Yong Lin P'18
 Hillary Rose Lincoln '02
 Margaret Simonds Lincoln '60
 and Richard K. Lincoln P'90
 Anna Lindel '03
 Tanya Lindsay '03
 Nancy Astwood Lindsey '62
 Natalia Lindsey '16
 Sue and Byron Lingeman P'82, '85
 Deborah Shaw Link '51

Hilary Lieberman Link '87
 Felicia Eckstein Lipson '80
 Amy Lister '80
 Jennifer Lister-Oldfield '86
 Ariana Littauer '02
 Ellen Minot Little '47*
 Jayne Trachman and Brett Litz P'16
 Emily Litz '16
 Yan Xu and Chibing Liu P'17
 Katherine Wang and Kan Liu P'22
 Susan Deland Livesay '65
 Catherine Livingston '15
 Catherine Livingston '83
 Jacqueline Livingston P'83
 Heather Lochridge '98
 Linda L. Logan P'89
 Eugenia Lombard '57
 Natalie Lombard '62
 Catherine Mannick and
 Enrico Lorenzini P'14
 Veronica Lorenzini '14
 Giuliana Loukas '03
 Elena and Ronald Loukas P'03
 Keely Lowe '01
 Joan MacDuffie Lowell '43
 Mary Lowell '69
 Alice Lu '12
 Jessica Lu '04
 Jie Lu P'14



“The building is going to continue to grow so that the Winsor community itself can also grow. But I also feel that what makes Winsor special is the aura, the community, that vibe you get when you first walk through its doors. It’s something that won’t change no matter how Winsor expands; that’s something Winsor will always have.”

Daria Crawford '16

Sylvia Lin and Michael Lu P'04, '11, '15
 Ying Pan and Tao Lu P'12
 Amanda Lubin '03
 Nicole Lubin '01
 Kylie Lucas '10
 Ruth Chick Lucas '74
 Eleanor Sutherland Lukens '53
 Heather Luntz '03
 Lisa Luo '11
 Chan and Xiao Luo P'11
 Marisa and Cagen Luse P'14
 Caiana Luse '14
 Honor Lydon '92
 Sarah Lydon '86
 Ishbel Keefer Lyle '51
 Lesley Merriman Lyman '63
 Lorraine Lyman '46
 Lydia Lyman '34
 Kevin Lynch
 Olivia Lynch '10
 Stephanie Lynch '07
 Karen and Sean Lynn-Jones P'14
 Taylor Lynn-Jones '14
 Alison Lyons '75
 Marjorie Rosenthal Lyons '94
 Julie and Robert Lyons P'17
 Clare Martin and Terrence Lyons P'15, '17
 Victoria Lyons '15
 Emily Ma '04
 Jill Hornor and Yo-Yo Ma P'04
 Sarah A. Mabel-Skillin
 Alysia Contas Macaulay '85
 and Angus Macaulay P'21
 Sara Macaulay
 Mary Bigelow Macbride '48
 Sandylee Weille Maccoby '51
 Allison Woodward MacCormick '83
 Constance Macdonald '46
 Hope Wilkinson MacDonald '65
 Lisel and Mark Macenka P'17, '21, '23
 Anne Bigelow MacFarlane '73
 Caroline MacGillivray '15
 Owen Mack and Kerry Nugent-Wells P'18
 Shalewa Mackall '86
 Sheila O'Brien MacKeigan '90
 Eleanore MacLean '11
 Grace and John MacLean P'11, '13
 Katherine MacLean '13
 Helen Cutter MacLennan '53
 Julia Irvine Madore '79
 Peter and Bertha Madras P'87, '92
 Sally Madsen '97
 Heather Johnson Magnan '93
 Ananya Mahalingam-Dhingra '14
 Meaghan Mahoney '98
 Nancy Strange Maitland '58
 Allegra Devon Maletz '99

Ruth and Russell Mallett P'10
 Judy Rappaport Maloney '73
 Kit Maloney '99
 Lily Maltz '01
 Alicia Bothwell Mancini '95
 Joyce Mandell '81
 Marian F. Mandell P'81
 Catherine Mankiw '10
 Deborah and Greg Mankiw P'10
 Kara Mann '01
 Darcie B. Manning
 Alecia and Frank Manning P'13
 Rebecca L. Manning
 Jennifer Mannis '92
 Abigail Adams Manny '53
 Lisa Manoogian '06
 Nancy Kaplan Mansbach '64
 Joan Fenno Mansfield '69 and
 Frederick Mansfield
 Julia Mansfield '01
 Porter and Richard J. W. Mansfield P'01
 Elizabeth Manson '83
 Mary L. Manson P'79, '83*
 Rachel Marandett '16
 Lisa Margulies '01
 Jane Starkman and Thomas Margulis
 Ann Mariano
 Gillian Marino '05
 Kimberly O'Keefe Markelewicz '98
 Ridie Markens
 Ashley Marlenga '01
 Sandra Marques and Jay Houston P'19
 Carolyn Pratt Marshall '51
 Clarissa Marshall
 Dana Martin
 John Martin and Paula Martin GP'14
 Helen Glotzer and Ken Martin P'22
 Lauren E. Martin P'14
 Jennifer and Middleton Martin P'20
 Pamela Finnerty Martin '92
 Stephanie Martinez '07
 Claire Altschuler Marx '69
 Chaia Crystal Mascall '15
 Elaine and Dareen Mascall P'15
 Sarah Mascioli '06
 Kathleen and Kenneth Masotti P'17
 Massachusetts Bar Foundation
 Elena M. Massarotti
 Amelia Bothwell Massimini '01
 Carl Mastandrea P'17, '22
 Lorianne Masuoka P'20
 Maura Mathieu '06
 Eileen Haley Mathieu and
 Owen R. Mathieu P'06
 Sarah Barrett Matisse '52
 Blanche Davis Matthews '52*
 Andrea Mautner '95

Alison May '92
 Anne Powning Mayer '54
 Gale Smith Mayfield '47
 Margaret Mazzucco
 Gayle and Paul McAdams P'93
 Maxine and John McAvity GP'12 '16
 Wendy Adams McCain '55
 Cheryl and Jack McCallion P'13
 Laura McCallion '13
 Mary Rhinelander McCarl '57 P'86
 Caitlin McCarthy '07
 Laura and Conor McCarthy P'15
 Lian McCarthy '15
 Sarah McColl '92
 Katherine McCord '02
 Elisabeth and Michael McCord P'02
 Hope Griswold McCrum '48
 Kathryn Young McCullough '97
 Sharon and James W. McCune, Jr.
 Katherine Russell McCurdy '72
 Craig McCurley and Sarah Abbott P'21
 Ann McDonald '16
 Joan McDonald '83
 Sara McDonald
 Catherine McDonough '95
 Victoria Tilney McDonough '83
 Dina Hasiotis McEvoy '97
 Martha Brace McEvoy '73
 Grace McGeoch '00
 Ursula McGeoch '94
 Victoria McGeoch '03
 Margaret Quine McGovern '71
 Deborah Field McGrath '66
 Hannah McGrath '13
 Jillian Campbell McGrath '02
 Allison McGuirk '15
 Patricia and Timothy McGuirk P'15
 Maeve and Peter McHenry P'96, '98
 Francesca Smith McInerney '87
 Linda McIntosh
 Josephine Hernandez and
 Lee McIntyre P'12
 Louisa McIntyre '12
 Janet Monahan McKeeney '84
 Abbie McKeon '01
 Janet Feldstein McKillop '90
 Carey McKinley
 Timothy McLaughlin
 Evan Joy McLaurin '12
 Pamela Parks McLaurin '71 and
 William McLaurin P'12
 Joan Marshall McLean '52
 Cynthia Webster McLean-Greeley '57
 Kristin McNally '00
 Elizabeth McNamara '13
 Kelley McNamara '09
 Mary and Robert McNamara P'09, '13

* Deceased

SUPPORTERS (continued)

UNDER \$10,000

Eliza McNay '16
Lucy Stone McNeece '58
Carroll Brugler McNeill '63
Ceara McNiff '92
Alexandra McPeck '83
Cornelia Hurley McPeck '58, P'83
Daniel Meagher GP'22
Danielle and Kevin Meagher P'22
Pamela Webb Mearsheimer '86
Carol Lyman Meckfessel '62
Mira Mehta '02
Martha Meigs '52
Robin Meisner '94
Riikka Melartin P'18
Karen Smith Melican '60 and
Thomas Melican P'93
Alison Ross Mellon '95
Raquel Melo '88
Laura Finnerty Melsheimer '93
Meagan Grealish Melville '92
Joan B. Melvin
Barbara and Richard Melvoin P'96
Johanna Mendillo '96
Ruth and Carlos Mendoza P'09, '15
W. Walter Menninger
George Mercer P'98
Helen Swan Merrill '47
Kate Merritt '65
Anne Isaacs Merwin '74
Barbara Smith Metcalf '49
Jane and Jonathan Metcalf P'10
Linnea Metcalf '10
Abigail Drescher Meyer '90
Clara Chan and Eric Meyer P'17
Molly D'Ambra Michael '96
Mr. and Mrs. Stephen Michalowski
GP'11, '18
Alexandra Pearlman Michel '96
Anjali Midha '98
Monica Midha '03
Caitlin P. Miles
Danielle Miley '00
Dana Miller '05
Arlene and Gary Miller P'03, '05
Jessica and James Miller P'23
Lee Miller GP'03, '05
Wallis Miller '78
Cyndi Suarez and Yawu Miller P'17
Joan Wakefield Millspaugh '53
Catherine Bedford Minor '92
Katherine Minton '04
Jacqueline Mitchell '92
Madeleine Mitchell '09
Mary Brown Mitchell '80
Alexandra Mitropoulos '08
Arielle Mitropoulos '15
Nayla and Nicholas Mitropoulos P'08, '15

Eleanor Shaw Mittendorf '33*
Martha Stevens Molloy '55
Jessica Monaco '16
Theresa M. Monahan P'84, '88
Lindsley Lowell Monfort '87
Julie de Neufville Monier '04
Millicent Sprague Monks '52
Karen Dusseault Monroe '85
and Michael Monroe P'17, '23
Mary Kae LaRose and
Marc Montagner P'18, '21
Graciela Monteagudo
Minda Monteagudo '10
Sally Montgomery '57
Eve Stewart Moody '91
Laura Uyterhoeven Moon '84
Amanda Stumm Mooradian '97
Alicia Hills Moore '48
Gwendalyn Moore '09
Louise Tilney Moore '80
Marcie Gross Moore '53
Penelope Percival Moore '58
Sandra Winsor Moore '65
Jill and P.J. Morelli P'22
Anshi Moreno Jimenez '15
Maria and Olger Moreno P'15
Francesca Morgan '86
Rose Converse Morgan '54
Anna Moriarty '05
Katherine Morison '07
Betty Morningstar '70
Donald J. Morris and
Suzanne G. Pender P'06
Ingrid and Jeffrey Morris P'18
Anna Morrow '16
Michaela Morrow '13
Patricia and Scott Morrow P'13, '16
Caroline Morse P'69
Lindsey Morse '08
Emily Morton '12
Cynthia and William Morton P'12
Olivia Moscicki '14
Sarah Dean Moses '56
Frederic Mosher P'20
Sara Mossman '90
Catharine Little Motley '37, P'65
Priscilla Olive Motley '71
Lamia and Ziad Moukheiber P'19
Ann and Benjamin Moulton P'11
Haley Moulton '11
Meredith Micala Mueller '91
Melita Mullen '90
Margaret and Albert G. Mulley, Jr. P'01
Katherine Mulley '01
Lydia Mullin '14
Mary Ann and Thomas Mullin P'14
Itayi Mungah P'22

Ruth Blake Munson '62
Judith Towvim Murad '57
Stephen Murdock
Caitlin Murphy '96
Courtney Murphy '07
Kanakano and David Murphy P'18
Maria Martignetti Murphy '83
Patricia Murphy P'96
Jeanine and Douglas Murphy P'21
Hannah Murray '11
Kathy Smith and Joseph Murray P'11, '16
Curtin Myers
David L. Myers
Beth and Marc Myers P'08
Kelli and Jeff Nace P'21
Alisa Nagano '98
Patricia Murray Nagano '58 and
Tamotsu Nagano P'98
Jessica Nahigian '10
Caroline Nahill '16
Mary Theresa Nahill '12
Tara Nahill '10
Amy Simonds Naimi '52
Ingrid Solberg Nappellio '92
Surya Narayanan-Pandit '15
Paula Martin and Adam Narva P'19
Elizabeth Coolidge Nassikas '88
Adrija Navarro '11
Katherine Nazemi '13
Ashley and Said Nazemi P'13
Stephanie Bigelow Neal '54
Marlissa Brigggett and
Peter Necheles P'14, '17
Shea Necheles '14
Arthur Nelson P'77, '78*
Vivian Nelson
Julia Neumann '15
Alison Newman '08
Elyse Newman '04
Sarah Newton '92
Susan Nichols '65
Katya Nick '03
Gail Herman Niederhoffer '60
Whitney Mechem Nieman '63
Jessica Power Nieto '92
Barbara Elliott Niles '56
Judith and Clyde Niles P'00
June Hodgdon Nimick '44
Abigail Nixon '95
Katharine and Ralph A. Nixon P'95, '97
Mary Bartol Noble '56
Susan Reidy Noftsker '63
Ambika Nohria '15
Lillian Balboni Nolan '63
Jane and David Noonan P'05, '07, '13
Kerry Noonan '07
Regina Noonan '13

Suzanne Ranere Norris '94
Amanda McColl Nugent '91
Lauren Connolly Nussbaum '97
Eileen and Kevin O'Boy P'16
Marisa Murphy O'Boyle '00
Caroline O'Brien P'77, '81, GP'10
Kathleen Phelps and
Robert O'Connor P'22
Kate O'Donnell '05
Thomas O'Donnell P'71
Ethlyn O'Garro P'16, '19
Colleen O'Gorman '13
Mary O'Gorman '12
Rhonda and Geoffrey O'Hara P'19
Nancy Mahoney O'Leary '86
and John O'Leary
Sara McLeod O'Malley '72
Allison O'Neil '91
Jennifer O'Neil '93
Frazer Gimber O'Neill '62
Siobhán O'Riordan '83
Gen Obata
Grace Ogilby '08
Lydia Ogilby P'75
Caroline Ognibene '14
Nancy Okamura '70
Catherine Olian '68
Martha Carmichael Oliphant '53
Natalie Olivares '15
Constance Gibbs Oliver '49 and
Peter Oliver P'75, '76, '78, GP'05
Nancy Daniels Oliver '49
Robin Oliver '76
Diana Olney '75
Eugenia Eacker Olson '49 and Bill Olson
Tommasina and John Olson P'11
Galia Ontiveros P'16
Victoria Ontiveros '16
Mona Zutshi Opubor '91
Margaretta Keyes Orbegoso '58
Safa Osmani '08
Mina Ellis Otis '52
Jane Hoeffel Otte '57 and
L. David Otte P'84, '86
Mary Otto
Anne Doyle Oudersluys '00
Emily M. Overend '02
Elizabeth Hamilton Owen '00
Astrid Pacini '12
Alexandra and Stefano Pacini P'12
Valentina I. Paez
Susan Simonds Page '40
Chrissa Pagitsas '96
Urboshi Pal '09
John Palermo P'03
Alexandra Palmer '13
Anne King Palmer '55

Laura Drubach and Edwin Palmer P'13
Jennifer Palmer '89
Catherine Chen and Feng Pan P'17
Hema Narayanan and
Vivek Pandit P'15, '18
Madeleine Pannell '07
Sabrina Coletta Paradis '88
Tamecka Parham '94
Isobel Parke '44
Abigail Parker '13
Amy Parker '04
Elizabeth Chick Parker '44
Joan Falvey Parker '50*
Nancy Paige Parker '52
Olivia Hood Parker '59
Rosalind Clark Parkinson '65
Mary Simonds Parkman '51
Erica Payson Parra '47
Byron Parrish
Elizabeth Wright Parrot '65
Elisabeth Parsley
Ann Parson '68
Christina Balboni Patterson '65
Christina Patterson '07
Diana Patterson '04
Marcia and Everton Patterson P'20
Frances Walker Patterson '45
Julie Rockett Paulick '92
Lucia McClintock Payne '61
Elizabeth Storer Paynter '47, P'83
Summer Payton '14
Pamela Rowe Peabody '53
Maya Arai and David Peak P'22



“The world has changed a great deal since 1994 when our oldest started at Winsor. And Winsor reflects and embraces those changes in a healthy way. *Promise is laying the foundation for whatever the future is going to bring, both at the school and globally.*”

Susan Alexander and Jim Gammill P'03, '05, '08

Ann Conway and Edward Pearson P'15
Caroline Scoville Pease '91
Julia Benton Pease '95
Carolina Peisch '07
Emilia and Richard Peisch P'07, '10
Stella Peisch '10
Jessica Pellegrini '07
Elizabeth Pendergast '02
Sarah Boardman Pendergast '96
Gail Pendleton '76
Luisa Perez Lacera '16
PHEME PERKINS '63
Laura Lyman Perrine '55
A. Taft Perry '73
Alice Perry '66
Barbara Morgan Perry '80
Cary Peabody Perry '63
Velura Fifield Perry '61, P'92
Katherine Gergely Pessin '64
Evonne and Mark Peters P'12
Michelle Peters '12
Anne Wade Peterson '92
Barbara Peterson P'80, '85, '90,
GP'11, '17, '18, '20
Deborah Stevenson Peterson '52
Elisabeth Peterson Smith '80 and
Joseph Smith P'11
Mitzi Peterson '90, P'17, '20
Gianna Petrillo '15
Laura and Richard Petrillo P'15, '18
Dina Petringa '86
Augusta Henderson Petrone '54
Annie Pfaff

* Deceased

~ Family Gift

SUPPORTERS (continued)

UNDER \$10,000

Elizabeth Moss Phillips '52
Margaret Whitney Phillips '49*
Sydney Watkins Phillips '44
Perry and William Phinney P'77
Susanne LaCroix Phippen '44*
Sybil Carey and Richard Piazza P'10
Katharine Pickering '62
Donald S. Pierce P'85
Virginia Knight Pierson '54
Emose Voltaire-Piou and
Jean-Eugene Piou P'18
Nancy and Peter Pitarys P'94, '96
Nancy and Calvin Place P'20
Penelope Griswold Place '42
Anne Althausen Plante '88
Samantha Plante '16
Elizabeth King Platt '47
Christopher Player
Wendy Shattuck and Sam Plimpton P'03
Sophie Plimpton '03
Anna Podolsky '06
Bonnie Baker Pohlig '88
Adeline Bradlee Polese '51
Emelia Benjamin and David Pollak P'11
Charlotte Pollard '16
Mary Fritze Pollard '85 and
Charles Pollard P'16, '19
Dorothy Paynter Pollock '83
Odallys Pomaes P'20
Eugene H. Pool
Lia and William Poorvu P'77
Julia Osborne Porrazzo '85
Patricia Porter '63
Joanne Koch Potee '50
Laura Potter '10
Patricia Potter '69
Tina and Alvin Poussaint P'18
Colleen Walsh Powell
Samantha Powell '01
Eleanor Powers '76
Nancy Israel and Lonnie Powers P'17
Sarah Marlenga Powers '05
Tracy Powers
Nancy Gardner Powlison '67
Berit Pratt '72 and Betsy Smith P'10
Cornelia Pratt '64
Elisabeth Merrill Pratt '70
Fanny Little Pratt '43, P'64, '66, '71
Nina Pratt '66
Patricia Ross Pratt '47 and
Herbert Pratt* P'72, GP'10
Harold Prenatt
Ellen Preston '61
Reverend Emily Preston '57
Deborah Price
Grace Price '06
J. Thomas Price P'06

Mary Beecher Price '58
Sarah Prickett '13
Elizabeth and William Prickett P'13
Barrie Rosenberg Prinz '89
Hillary Procknow '04
Pauline Feng and William Pu P'20
Orla O'Riordan Pujado '85
Bridgett Purcell '16
Christine B. Purcell P'16
Elizabeth Bernhardt and
Paul Puzanghera P'17
Hope Auerbach Pym '67
Baoyinq Qiu
Kendall C. Quackenbos
Simeen and A. Shaheen Quader P'15
Kamala Harrington Questel '92
Jennifer and Marcus Quigley P'21
Elizabeth Quinn '00
Mary and John Quinn P'07
Mary Catherine Quinn '07
Patricia M. Quinn P'02
Carolyn Quirk '03
Kathryn Quirk '05
Mary Noonan Quirk '05
Donna and Tom Quirk P'03, '05
Ayesha Khalid and
Sadeq Quraishi P'17, '21
Frances Carter Rademaekers '50
Stephanie Kluter Rael '93
Karina Rahardja '06
Inam and Mira Rahman, GP'11 '14

Anne Raish '92
Geetha Jay and Jay Ramadorai P'14
Meera Ramakrishnan '14
Shanthi and Navalpakkam
Ramakrishnan P'14
Kimberly M. Ramos
Anupama and Pramod Rana P'14
Priyokti Rana '14
Emily Swaim Ranaghan '05
Lynn McFarlan Randall and
Christopher Randall P'09
Rebecca Randall '09
Barbara Rappaport P'70, '71, '73, '78,
'82, '84, GP'08, '13
Leah Rappaport '03
Sarah Graham Rarback '58
Julie Rath '95
Tonya Rawlings
Mary-Caitlin Ray '05
Marchelle and James Raynor GP'12
Maia Raynor-French '12
Razoo Foundation
Catherine Rea '09
Charlotte Brooks Read '38
Clair and James Read P'19
Susannah Kay Read '83 and
Brooks Read P'18
Jennifer Reardon
Denee Reaves '07
Susan and Jeff Reaves
Elizabeth Bucklin Reddy '75



“It wasn’t until I went off to college that I truly began to appreciate what an outstanding education I had received at Winsor, and how rare that was for a woman at that time. Where did I get my education? I really got it at Winsor. With *Promise*, we are keeping Winsor vibrant for future generations”

Lee Thorndike Sprague '58

Elizabeth Riemer Reece '74
Ann Soule Reed '35
Lauren Oresman Regardie '90
Mairead Reilly '09
Lisa Rein '80
Amy Remensnyder '78
Anne and John Renneburg P'13
Carol Renneburg '13
Laura Gaylord Resch '06
Audrey Reuman '16
Carolyn Lamb and
Jonathan Reuman P'16
Caroline Isber Reuter '58
Lisa M. Reynolds
Nicholas Reynolds
Susan Rice '75
Tiffany Rice
Sharon Rich and Nancy Reed P'09
Sophie Rich '09
Berry G. Richards GP'99
Diana Beebe Richardson '45
Eleanor Motley Richardson '65
Heidi Richardson '68
Juliet Richardson '74
Margaret Richardson '47
Mary Richardson '12
Rebekah Ketchum Richardson '52
Kari and Sam Richardson P'12
Alisa Kahn Ridruejo '93
Louise Riemer '71
Lisa Riffelmacher '01
Michelle Riffelmacher '99
Jan and William Riggs
Leslie Foster Rigney '62
Brigid Riley
Cesar and Nila Rivera P'15
Kathryn Robb and Laura Burton P'20
Brett Robbins P'06
Helen Robbins '81
Judith Robbins
Kelsey Robbins '06
Andrée Robert '76
Laird V. Elting and Jean M. Robert P'18
Caroline Roberts '90
Adrian Robertson '15
Bettina von Goetz and
John Robertson P'15
Alexandra Robinson '88
Marla Altschuler Robinson '75
Pamela Hubbell Robinson '63
Barbara and Francis X. Rockett P'92
Alison and Dana Rodin P'00
Elizabeth Roe '16
Ann and Justin Roe P'09, '16
Ava Rofougaran '14
Mahkameh and Nicolas Rofougaran P'14
Brooke Richie Rogers '95



“Winsor produces girls with a clear identity and sense of self—emotionally confident young women who are able to navigate the world and speak with an authentic voice. I cannot emphasize enough how important that is, not just for me as a parent, but for society.”

Andrew Compaine P'20

Kristina Cunningham Rogers '66
Margo Field Rogers '69
Patricia Rogers '64
Nancy Nichols Roggeveen '38
Jasmine Rollins '08
Georgina Ropes '64
Ann Marie and R. Scott Rosa P'08
Lacey Janet Rose '06
Jane Rose '64
Vanessa Rose '00
Ann Underhill Rosenbaum '51
Debra Rosenberg Rosenbaum '91
Kimberly Johnson Rosenbaum '84
Susan and Robert Rosenberg P'12
Anne Ehrlich Rosenfeld '61
Joan Morse Rosengard '55
Erica Rosenthal '15
Linda and Marc Rosenthal P'94
Marci and Richard Rosenthal P'15
Susan and Charles Ross P'21
Joan Binney Ross '55
Carolyn Parkhurst Rosser '88
Elizabeth Rossin '01
Sylvia Davison Rost '53
Veronica Rotemberg '02
Claire Stuart Roth '70
Nancy Adams Roth '66
Sabine Rothman '86
Pamela and Michael Rothmeier P'05
Elizabeth Rothrauff '83
Catherine Rowbotham '92
Barbara and Frank Rowbotham P'92, '96

Marisa Timmins Rowe '92
Stephanie Davis Rowe '87, P'24
Maria Pope Rowley '75
Pat and Tony Rubbico
Arlene Rubin
Ellen MacVeagh Rublee '50
Nancy Turtle Rucker '54
Katherine Rudich '00
Sophie Ruehr '14
Lindsey Ruggles '14
Meredith Ruhl
Kristen Russell '02
Patty Jewell Russell '48
Victoria Russell '62
Susanna Kenney Russo '70
Lowell Rutkove and Edith Rutkove GP'14
Elena Ruehr and Seward Rutkove P'14
Robert Ruxin and Margaret Shukur P'16
Talia Ruxin '16
Anne Kennard Ryan '54
Robin Ryan
Margaret Ryan '12*
Naomi Ryan '03
Susanna Ryan and Gordon Harvey P'18
Beverly Ryburn P'71
Maria Ryerson '59
Rachel Safran '00
Daphnah and Jay Sage P'98
Sarah O'Hare Sage '88
Kitty and Mustafa Sahin P'22, '24
Leila Sales '02
Margaret Bean Salgado '89

* Deceased

~ Family Gift

SUPPORTERS (continued)

UNDER \$10,000

Beverly Salhanick '76
Sarah Sallan '05
Darlene and Stephen Sallan P'05
Elizabeth Morse Salot '53
Elizabeth Samet '87
Margaret Allyn Sammons '49
Mary Abbott Samp '37
Brittney Sampson '06
Vinita Leslie and Manesh Samtani P'19
Elizabeth Sandman '95
Lindsey Miller Santiago '03
Margaret Santry '45
Catherine Frankl Sarkis '82 and
Ramzi A. Sarkis P'23
Jennifer Eby Satterthwaite '90 and
James D. Satterthwaite P'23
Megan Savage '06
Bettina Townsend Sawhill '41
Penelope Potter Saxe '54
Natalie Sayegh '15
Priscilla Slanetz and Raja Sayegh P'15, '17
Ann Scanlon '76
Courtney Schendorf Schacht '94
Pamela Johnson Scheinman '62
Hester Garfield Schepens '62
E. Christina Schiciano '13
Abigail Schiff '06
Emily Schlesinger '98
Katharine Schlesinger '01
Mary Wheatland Schley '44
Marlayna Schmitt '80
Brigitte Schmittlein '16
Theresa and Carl Schmittlein GP'16
Barbara Bickart and
David Schmittlein P'16
Barbara Abrams Schneider '62
Nancy Wasserman Schneider '66
Mary Schnoor '06
Karen Scholz and Heidi Bright P'14
Rachel Scholz-Bright '14
Suzannah Saltonstall Schroeder '54
Karen Schulman '67
Helen O. Schultz
Rebecca Schwartz '03
Susan Khurshudyan Schwartz '04
Helen Fletcher Schwarz-Lawton '60
Harry Scott
Katherine T. Scott
Bailey Scott '12
Diana and Ron Scott P'12
Sheila and Wayne Scott P'23
Whitney Scott
Faith Greeley Scovel '51
Krista and Roger Scoville P'91
Nina Harrison Scribner '58
Anne Sebestyen '74
Esther and Fredrick Séguin P'16

Isabel Séguin '16
Grace and Marcel Seiler P'86, '96
Kimberly Selkoe '93
Laura Sen P'06
Diana Senechal '81
Margo Servison '07
Morgan Sessoms '02
Elizabeth and Michael Shade P'17
Elizabeth Shanahan
Eleanor Canham Shanley '60
Stacey Dogan and Gregg Shapiro P'18
Rachel Shapiro '86
Patricia Jamison Sharpe '60
Priscilla Kingsley Sharpless '52
Eleanore Beale Shaver '65
Sandy and Bruce Shaw
Carolyn Shea '95
Mr. and Mrs. Horace Shearer GP'13
Alison Maguire Sheffield '89
Cynthia Shelmerdine '66
Susan Shelmerdine '72
Jennifer Hughes and David Sherman P'20
Martha Weeks Sherrill '40*
Sonal Pandya and Sunil Sheth P'22
Yang Shi and Joy Qiu P'19
Elizabeth Shields '99
Harriet Haffenreffer Shields '64
Gayle M. Merling and
James D. Shields P'06
Janice and Thomas Shields P'99
Jan Gochberg Shifren '80
Rebecca Shingleton '02 and
Kevin Koslosky
Polly Steele and Parker Shipton P'10
Susannah Shipton '10
Emily Shire '05
Samantha R. Shirley
Antonia Colby Shoham '52
Linda R. Shoolman P'93
Medb Mahony Sichko '74 and
Samuel Sichko P'10
Stassja Sichko '10
Carter Woodworth Siegel '85
Lydia Siegel '89
Jane Frank Siewers '72
Emily Siff '15
Shirley and Robert GP'15
Marlene Kliman and
Bernard Silver P'09, '12
Jean S. Silver P'74, GP'14
Svetlana and Eric Silverman P'13
Lila and Gilbert Silverman GP'13
Katarina Silverman '13
Lauren Crothers Simard '89
Muriel Medard and
John Simmons P'11, '17
Abigail Simon '16

Ann Bainbridge Simonds '66
and Robert Simonds
Patricia and Eric Simonson P'03
Juliet Sincoff
Emily Apsell Singer '98
Priya and Aneesh Singhal P'16
Karina Singhal '16
Sandra Gordon and Carl Singletary P'19
Rudy Sirochman
Eleanor Arnold Sisson '47
Mariah Sieber Sixkiller '95
Elizabeth Skates '88
Jennifer Slingerland Skeele '71
and Charles Skeele P'98, '02
Susan C. Skelley and
Daniel B. Green P'06
Elizabeth Skelton
Kristen Skillman '12
Kimberley Russell Slate '86
Alexandra Slater '14
Julia Slater '12
Kim Slater P'12, '14
Nancy Morrisroe and Mark Slater P'22
Martha Tyson Slayman '60
Jessica Sloman '95
Samantha Slotnick
Elizabeth Bradley Sluder '39
Joyce Carr Small '57
Alexandra Smith '99
Allison Smith '02
Anne Briggs Smith '68
Camilla Smith '58
Christine Paterson Smith '74
Ruth Smith P'58, '60, GP'93*
Gloria Smith P'13
Jessica Smith '11
Laura Levinson Smith '68
Leslie H. Smith
Nancy Spencer Smith '59
Nancy Bassett Smith '56
Robin Smith '74
Sidra Smith '88
Tatiana Gardner Smith '73 and
Earl T. Smith, Jr. P'02
Tatiana Smith '02
Wendy Spinney Smith '78
Jaime Stahler Smoller '93
Isabella Leighton Smyth '45
Kristen Sanders Smyth '82
William N. Smyth P'96
Myjah Snape '12
Diane Sneider
Jennifer Revis Snider '87
Mary Brown Snow '46
Anne Carter Snyder '53
Polly Minifie Snyder '88
Society For Science & The Public
Erika Solberg '88

Richard Solit P'16
Lisa Soltani
Gloria Sonnabend GP'12, '14
Katherine Stone Sonnenborn '96
Cynthia Sortwell '71
Barbara Sossen '68
Arlene Kasarjian and
Dean Soultanian P'14
Diane Souvaine '71
Kimberly and Kenneth Sovie P'12
Madeline Sovie '12
Augusta Otte Sparks '86
Rebecca Sparks '67
Frances Chick Spaulding '72
Michelle and Lawrence Specht P'19
Joanne Ripley Spencer '52
Louisa Clark Spencer '42
Deborah Sperling '02
Allys and Christopher J. Spilios P'95, '97
Linda Murphy and David Spillane P'15
Nuala Spillane '15
Phyllis and Paul Spinale P'17
Adelbert L. Spitzer and
Diane Young-Spitzer P'03, '07
Allison Spitzer '03
Carey Spitzer '07
Rosamond Kent Sprague '40
Elinor Springer '96
Chafen Lu and Timothy Springer P'22
Shoshi Spurlock '12
Anuradha Annaswamy and
M. Srinivasan P'13
Emily Stack '14
Mary and Thomas Stack P'14
Hannah Stack-Dunbier '14
Karen and Bernard Stalilonis
Martha Stanbury '65
Gabrielle Stanfield '15
Sarah Stanford
Elizabeth Stanton '97
Laura Stanton '93
Dinah Starr '62
Martha Houghton Starr '46
Melinda B. Starr
Victoria Starr '58*
Sandra Steele '65
Cristina Stefanescu '04
Dan C. Stefanescu and
Eva Kampits P'00, '04
Albert Steg
Roberta Steinberg
Valerie Clair Stelling '53 and John Stelling
Eliza Gardiner Stensland '04
Yvette Stenzel
Elizabeth Stephanopoulos '03
Alice F. Stern
Julia Stern '07
Laura Folkman Steuer '82

Mary Fyffe Stevens '56
Rebecca Stevens '05
Sylvia Stevens '56
Anne Stevenson '97
Heather Stevenson '02
Caroline Stewart '99
Jennifer Stewart '88
Molly Stiffler '10
Deborah Goldberg Stinnett '59
Genevra Stone '03
Lauren Stone '13
Laura and Lee Stone P'17
Marion Stone GP'03, '12
Roberta Simpkins Stoneman '52
Sally Birnie Stoops '51 and William Stoops
Sage Stossel '89
Suzanne Ellis Stoyer '53
Elizabeth Strakhov '02
Leigh Strauss '92
Julia Streuli '08
Danielle Dana Strickman '62
Alison Strieder '57
Helen Strieder '58
Lisa Stringfellow
Barbara Zahner Stromsted '48
Daina Stankevics Strong '84
Mary Ray Struthers '61 and
Harvey Struthers
Lorella and Peter Struzzi
Kristen Samuelson Stuart '98
Anne Stubbs '73

Mary Fyffe Stevens '56
Liyuan Ma and Ming Su P'19
Kriti Subramanyam '11
Lesli Suggs P'18
Caitlin Sullivan '03
Katharine Sullivan '07
Patricia Sullivan '58
Tanisha Jorsling Sullivan '92
Tara Sullivan '03
Susan Albrecht Sumeraj '87
Mary Louise Sunderland P'66, '68, '74
Rachel Polonsky Sundet '99
Courtney Sung '06
Sunset Tower Family Dentistry
Rosamond Pugh Swain '51*
Freda Theopold Swan '53
Ariel Swartley '64
Linda Swartz P'84, GP'15
Carol Fletcher Sweet '66
Roberta and James Swenson P'82, '86
Katherine Swenson '86
Louise Macy Sylvester '66
Lindsay Symes '01
Margaret and John Symington
T. L. C. Inc.
Rozita and Shahin Tabatabaei P'18
Sally Hale Taggart '54
Lisa Taillacq
Carol Sawyer Tallino '66
Katharine and Tony Tam P'19
Liliana Tandon '10
Olivia Tandon '05



“At Winsor, I was able to take for granted that women were the leaders, women were the smartest, most talented and hardest-working ones. Heading to college, I took with me core values of Winsor— independent thinking, intellectual humility, and the confidence to ask questions and get answers.”

Liane Young '00

* Deceased

SUPPORTERS (continued)

UNDER \$10,000

Nancy Hollingsworth Taplin '60
Anne Tappan '64
Olivia Tappan '60
Joan and Bill M. Tarkulich P'08, '14
Suzanne Tarkulich '14
Isabel Taube '88
Elizabeth Tauro '80
Elizabeth Taylor P'08
Christine Taylor-McKenna
Cecilia DeAndrade and
Salomao Teixeira P'20
Kelly Tellis-Warren '06
Elizabeth Tennican '86
Marie Gourgue and Pierre Tessono P'17
Cynthia Thorndike Thackara '40
The Emery Bag
The Steppingstone Foundation
Alexandra Theall '15
Kathy Theall and Matthew Theall P'15
Keranie Theodosiou '08
Maria Theophilis '87
Judith Thoft P'82, '85, '86
John Thoman
Alyssa Thomas '09
Carolyn Thomas '06
Jeannine Pinto and David Thomas P'21
Lindsay Thomas '02
Margaret Gay Thomas '46
Marjorie Prince Thomas '37
Martha Elwell Thomas '56 and
H. Emerson Thomas, Jr.
Polly Hoppin and Robert Thomas P'09
Rosamond Hamlin Thomas '37*
Elena Wethers Thompson '87
Melinda Thompson '94
Rosamond Higgins Thompson '38, P'72*
Mary Ellen and George Thomsen GP'12
Sarah Thomsen '12
Sarah Walker Thomson '52
Mary and Jack Thorndike P'19
Emma Thorne '05
Marian Francis Thornton '51
Naomi Powers Thornton '52
Rosamond Wheeler Thorp '53
Antra and Elliott Thrasher P'93
Hilary Thrasher '02
Robert and Shari Thurer P'95
Sarah Thurer '95
Jennifer Tierney
Julia Tierney '99
Juliet Tierney '08
Marilyn and Philip Tierney P'03, '08
Nesrin Garan Tift '99
Eleanor Tillinghast '74
Elizabeth Tillinghast '75
Pamela Tillinghast '79
Elizabeth Tillman '83
Rebecca Tilney '78



“Philanthropy is a lifelong endeavor, and I believe strongly in the importance of education. We’ve had someone attending Winsor under three of its eight heads of school. Giving is a tangible way to say thank you to all that Winsor has given to our family.”

F. Warren McFarlan P'92

Elizabeth Tobey '89
Solace and Philip Tobey P'89
Sarah G. Toce '02
Allison R. Toman '05
Jennifer L. Toon
Adrienne Torf '73
Flor Rivera-Torres and
Edgar Torres P'19, '22
Stephanie Condakes Torski '72
Kezia Toth '00
Angela H. Toussaint '82
Margaret Clark Towle '64, P'91, '95
Anne Petrasch Townsend '98
Elizabeth Townsend '87
Katharine Townsend '86
Lee Townsend '63
Elizabeth Henry Tracey '49
Meghan Tracey
Martha Hallett and Charles Tracy P'12
Charlotte Tracy '12
Dorothy Tran '13
Kim Pham and Minh Tran P'13
Katherine Traquina '13
Meredith Traquina '09
Sue Tredennick '62
Virginia Triant '92
Caroline Moore Tripp '62
Helen Angier Trumbull '49
Amy Colantuoni and David Tsai P'19
Lindsey Tucker '97
Sasha Polonsky Tulgan '96
Matthew Tupper
Rosine Vance Turner '56

Weslie Turner '06
Judith Prien Turzanski '57
Julia Twarog '01
Susan and Stanley Twarog P'01, '04
Susanna Twarog '04
Robin Tweedy P'21
Haroldine and Edward Tyler P'89
Julianne Tylko '06
Elena Ubeda '16
Marion and Mariano Ubeda P'16
Sarah Baker Uhle '53
Angelique Uhlmann '86
Elizabeth Umlas '83
Meg and James Umlas P'22
Evelyn and Joel Umlas P'83
Dehlia Umunna P'20
Katharine Lawrence Unger '61
Janet Green Vaillant '54
Eleanor Steward van Alen '88
Aneiage Van Bean
Elizabeth Prince Van Buren '43
Gwo-Shu Lee and Lex Van der Ploeg P'15
Sea-Jay Van der Ploeg '15
Mieko and Pascal van Haeren P'23
Ernestine Van Schaik '62
Jen and Tim Vanech
Laura Vantine
Naazanene Vatan '16
Roya and Pirooz Vatan P'16
Anne Thompson Vaughan '60
Rebecca Yates Velander '85 and
Frederik Velander
Charlotte and Edward Vena P'97

Grace Venezia '12
Mark Venezia P'12
Carolyn Lattin and
Venkat Venkatraman P'18
Tamsin Venn '68
Erika Verdine '12
Blake Vermeule '84
Nora Ross-Johnson Vernazza '97
Leila Vicinelli '14
Alice Smith Victor '58
Zamile Vilakazi '96
Rhea Villamin '03
Alexandra and Frantz Vilmenay P'22
Lydia Cohen Vine '63
Louisa Hunnewell von Clemm '55*
Janet Graham von Gumpfenberg '56
Elise Cutler von Koschembahr '60
Anne Luther von Rosenberg '58
Myra Tillotson von Turkovich '74
Lucia Rogers Vorys '44
Ngoc-Tran Vu '06
Nguyet-Vy Vu '02
Jane Wachtmeister '03
Barbara Wade P'87, '89, '92
Richard Waite
Judith Winslow Walcott '59
Julia Walcott '03
Barbara M. Bilder and
Daniel J. Waldman P'10, '12
Danielle Waldman '10
Lauren Waldman '12
Martha Dineen Wales '75
Naomi Walker
Suzanne Walker '62
Lee Culver Wallace '62
Anne and Monte Wallace P'79
Phoebe Fitz Wallace '37*
Caroline Abdulrazak Walsh '90
Catherine Walsh '12
Lori and Fraser Walsh P'96, '12
Jennifer Walsh '13
Mary Walsh GP'05, '07, '13*
Michelle Walsh '16
Robert J. Walsh, Jr.
Emily Brassard Walt '95
Tracy Walters '89
Nancy Motley Walton '72 and
Bruce Walton P'04
Nancy Walton '04
Joan Zhong and Charles Wang P'14
Clara Wang '15
Tiffany and Frank Wang P'15
Christine Qian and James Wang P'17
Yixian Zhang and Jian Wang P'18
Jing and Jiang Wang P'14
Ming Wang '14
Angela Lee and Stanley Wang P'22
Stephanie Wang '14
Yan Ni and Ying Wang P'21

Betsy Wanger '81
Amy and David Wanger P'01
Emily Wanger '09
Nancy Wanger P'81, GP'09
Amanda Ward '97
Carolyn Osteen Ward '85
Gerty and Eric Ward
Maslen Ward '16
Ann Williams Wardwell '41
Faith Killiam Warner '40
Gwendolyn Warren '00
Margaret Otte Warren '84
Maxine Warren '03
Tiffany R. Warren '92
Vanessa Warshaw '14
Whitney Washington '07
Alison Hall Watkins '62
Miwa A. Watkins '83
Stacey Watson '85
Anne Sturgis Watt '55
Kathleen Bulger Webb '85
Emily Docken Webster '92
Marion Ryder Webster '81
Priscilla Little Webster '36*
Amy Weed P'13
Mr. and Mrs. Barry Weed GP'13
Catherine Weed '13
Richard Weed P'13
Emma Weeks '07
Meghan Weeks '04
Julia and Sinclair Weeks P'07
Mary and Stephen Weeks P'04
Dianne Isaacs Weil '52
Joanne Nicklas and Eric Weinberger P'23
David Weingarten and Liora Beer P'08, '12
Liza Weingarten '08
Genna Weinstein '97
Lisa Simmons Weinstein '82
Leah Weintraub '02
Christina Weir '88
Alexandra Weiss '04
Odile Weissenborn '88
Elisabeth Swan Weitzel '54 and
John Weitzel P'84
Nancy Venator Weizman '87
Virginia Bridge Welch '51
Hope Weld '62
Sharon Weld '66
Caitlin Weldon '16
Cynthia Korb Wellington '87
Alice Wheatland Wellman '49
and Bradford S. Wellman
Carlotta Wells '76
Rebekah Porter Wells '51
Mary and Scott Wells P'22
Thomas Wensink
Valerie Westcott '90
Marilyn Augustyn and
George Westerman P'19

Sarah Foster Wetstone '77
Anne Robertson Wheeler '57
and Thomas Wheeler
Anne Hotchkiss Wheeler '52
Emlen Lowell Wheeler '43
Jennifer Wheeler '88
Nancy Snedeker Wheeler '53
Alexandra Adams Wheelock '91
Juliet Whitcomb '77 and Elliot J. Schrage
Lauren and Matthew Whitcomb
Alix White '72
Chayla White '03
Constance V. R. White P'72, '73
Edith White '73
Elaine White P'83*
Hilary White '94
Norah McCormick White '93
Phyllis Darling White '42
Susannah White '58
Wendy White '64
Mariama White-Hammond '96
Margaret Hall Whitfield '51
Jill Johnson Whiting '52
Eleanor Toumey Whitman '49
Molly Butler Whitney '73
Wendy Wiberg '13
Valeria C. Wicker
Joan Ryder Wickersham '52
Cheryl Wilcox '64
Charlotte Wilder '07
Merrill Bunce Wilder '38*
Rebecca Willard '09
Gale Gryska Willauer '73
Caroline Williams '87
Edith Knowles Williams '72
Emily Young Williams '96
Esther Chute Williams '54, P'80
Georgia Williams '14
Hadley Williams '12
Jessie Marshall Williams '35, P'60,
'62, '66, GP'93*
Julia Williams GP'13
Patricia and Larry Williams P'13
Meryl Leboff and Mark Williams P'04
Jennifer Smith-Williams and
Martin Williams P'13
Midlaine S. Williams
Nancy Tobey Williams '49*
Rebecca Williams '13
Susan and Stephen Williams P'12
Susan Williams '66
Avery LeBoff Williams-Vafai '04
Anne Wilson '66*
Anne Sears Wilson '49
Catherine Wilson '86
Christine Glynn Wilson '83
Christopher L. Wilson P'06
Curry Wilson '06
Linda and Kenneth Wilson P'04

* Deceased

~ Family Gift

SUPPORTERS (continued)

UNDER \$10,000

Sarah Wilson '71
Sarah Wilson '78
Scott Wilson and Anne Allan P'19
Yvette Laneres Wilson '40
Elizabeth Schwarz Wing '51
Virginia Wing
Deborah Winkler '85
Amy and Edward Winslow P'21
Mary Winslow '47
Miriam Winslow '52*
Maxine Winston '10
Alexis Hasiotis Wintersteen '91
Augusta Winthrop '12
Hilary Smyth Wirtz '96
Amey Witbeck Witherbee '74
Sara Withington '55
Angella Witter P'16
Kiara Witter '16
Sarah Wolf
Jennifer Hurvitz Wolff '92
Katharine Wolff '62
Sarah Minifie Wolfgang '88
Ann Williams Woll '62
Peggy L. Wolman
Rebekah Wolman
Sofia Wolman '07
Connie Wong '86
Mary and David Wong P'18
Fay Wong '80
Ken Wonoski
Elisabete and Wilson Woo P'20, '22
Diana Newton Wood '75
Joan Perrin Wood '42*
Mel Wood
Linda Mixer Woodard '64
Caitlin A. Woodburn '06
Lucia Hedge Woods '40*
Merrill Robbins Woodworth '76
Marie MacLean Riley Woollacott '94
Genevieve Alice Woolverton '08
Theresa and William Woolverton P'08
Robina Gregg Worcester '52
Sherburne Reidy Worthen '54
Corinne Zimmerman and
Paul Worthington P'15
Stephanie Wratten
Caroline Wright '63*
Eleanor Witte Wright '53
Judy and Paul Wright GP'16
Angela and Paul Wright P'16
Taylor Wright '16
Bin Wu and Yuhong Yang P'20, '24
Elise Wu '15
Jessica Wu '13
Linda and Po-Hsi Wu P'13
Amy Xie and Wen-Shu Wu P'15
Julia Wucherpfennig '08

* Deceased

~ Family Gift



“This is my school. It will always be my school. Even if it looks different—it has this great new building, different programs, different teachers—this is always a space that I can come back to, and that matters to me. We all can play a really important role in making the school what it’s going to be next.”

Lauren Alexander '09

Abigail Wyckoff '83
Valerie Wyckoff P'79, '83
Moiria Wylie '56
P. Margaret Wylie '63
Anne Wyman '48*
Tiffany Xie '13
Wen Hong Yang and Yong Hui Xie P'13
Xiaoqiang Xu and Yanping Wen P'20
Jessica Yamada '14
Angela Yang '14
Veronica Yang '14
Yibing Yang P'14
Yijing Yang '04
Hong Xu and Yingfei Yang P'14, '18
Zhongfa Yang and Jie Jiao P'20
Bei Zhang and Dongdong Yao P'18
Madeleine Yardley '08
Marilynn and Michael Yaremchuk P'00
Cynthia and Tsunehiro Yasuda P'97
Laura Yee '97
Davis Yetman P'16
Hailey Yetman '16
Laura Ma and Kevin Yin P'22
Susan Glazer Yospin '94
Lisa Yost
Carolina Young '14
Eve Young '02
Hollis McCown Young '58
Joan Young '93
Liane Young '00

Shalise and Marcus Young P'21
Mary DeLong and Robert Young P'14
Tiffany J. Young
Helen Yu '11
Krishna Butaney Zahos '90
Alisa Barrett Zalosh '90
Mary Zane '73
Parinaz Zartoshty '86
Patricia Zelee '04
Whitney Zelee '06
Zhuge Zeng and Guangjia Zhang P'21
Joyce Zhang '13
Sherry Cao and Wenhua Zhang P'19
Wei Li and Xiaochun Zhang P'13
Xiaodong Zhao and Jun Yang P'04
May and Jim Zhou P'14
Sara Zhou '14
Hua Hua and Zheng Zhou P'18
Andrea Zhu '13
Wendy Qui and Andrew Zhu P'13
Ping Shi and Qifu Zhu P'18
Diane Campbell Ziener '57
Randi Silverman Zifrony '81
Carlotta Zilliax and John Zilliax
Katherine Mallett Zimmermann '10
Margaret Ferris Zimmermann '63
Rhonda Shapiro Zinner '61*
Cornelia Perkins Zinsser '48
Julia Hunt Zylstra '76

The Winsor Promise Designated Gifts

The following donors designated their gifts to aid in the funding of the school's annual operating budget. Annual Fund gifts designated to financial aid and faculty support are recognized in the full donor honor roll.

A HISTORY OF THE WINSOR SCHOOL

Lee Lawrence Albright '57 and
Nile Albright P'88, GP'17
Katrina Hanson Avery '57
Anna Bartow '57
Anne Cohen '57
Evelyn Hollingsworth Doran '57 and
Robert Doran
Trelawney Nichols Goodell '57
Elizabeth Partridge Heald '57, P'87,
GP'18, '20, '21
Sally Montgomery '57
Jane Hoeffel Otte '57 and
L. David Otte P'84, '86
Lynda Spence '57, P'90

ARCHIVES

William W. Dunnell, III

ARTS

Susan and William Breed
The Cronin Family P'07
John H. Deknatel and
Carol M. Taylor P'88, '01
The Emery Bag
Andrea and Henry Keene
Molly Stifler '10

ATHLETICS

Anonymous
Robyn Gibson Asenso '06, *in memory of Nina Boylan '06*
Sara Singer and Gordon Bloom P'17
Karin Bothwell '06, *in memory of Nina Boylan '06*
Maura Shannon and Philip Candilis P'13
Stefanie and Douglas Cronin P'17
Susannah Ford '06, *in memory of Nina Boylan '06*
Molly Gibbons Golinvaux '06,
in memory of Nina Boylan '06
William Hudson, *in memory of Reginald D. Hudson*
Anne Hutchinson '62
Emma Johnson '06, *in memory of Nina Boylan '06*
Maura Mathieu '06, *in memory of Nina Boylan '06*
Lori Holik and Charles Ognibene P'14
Christine B. Purcell P'16
Karina Rahardja '06, *in memory of Nina Boylan '06*
Laura Gaylord Resch '06, *in memory of Nina Boylan '06*
Lacey Janet Rose '06, *in memory of Nina Boylan '06*
Tatiana Smith '02
Molly Stifler '10
Courtney Sung '06, *in memory of Nina Boylan '06*
Sally Wilkins '58
Curry Wilson '06, *in memory of Nina Boylan '06*

LIBRARY

Pamela Johnson Scheinman '62

SCIENCE

Brant Binder P'20
GE Foundation
Harriet Hornblower '64
Society For Science & The Public
Jane Wachtmeister '03

STUDENT LIFE

Anonymous
Eastern Bank Charitable Foundation
Tyler Knowles
Massachusetts Bar Foundation
Brenda Haynes and Adam Koppel P'16
Nancy Venator Weizman '87

TECHNOLOGY

The Adelard A. and
Valeda Lea Roy Foundation
The Charles A. Dana Foundation

WELLNESS

Ann and Sean Collins P'12, '18

WORLD LANGUAGES

Lucy Lowell Grimm '47
Susan and Michael Lesburg P'94, GP'21

The Winsor Promise New Named Endowed Funds

Winsor's endowment is a collection of more than a century of gifts from generous alumnae, parents and friends. The following endowed funds, established by donors to the campaign, will provide an enduring reminder of *Promise's* impact. Income from these vital new sources will enhance all aspects of school life.

CAROLINE ABERNETHY SCHOLARSHIP FUND

Established in 2009 by Linda Wisnewski and William Collatos in appreciation for the outstanding education, mentorship and nurturing their daughter Caroline Collatos '09 received from Ms. Abernethy. Income from the fund will provide tuition assistance to students in need of financial aid.

ALICE C. JENCKES MEMORIAL SCHOLARSHIP

Established in October 2014 by Frances B. Youngblood '56 in memory of Winsor history teacher, Alice C. Jenckes. Income from this fund will provide tuition assistance to students in need of financial aid.

TYLER KNOWLES SCHOLARSHIP FUND

Established in 2009 by Linda Wisnewski and William Collatos in appreciation for the outstanding education, mentorship and nurturing their daughter Alexis Collatos '03 received from Ms. Knowles. Income from the fund will provide tuition assistance to students in need of financial aid.

THE MARTINA BRANDEGEE LAWRENCE FORUM

Established in 2012, Winsor's annual speaker's forum honors the memory of Martina Brandegee Lawrence, Class of 1925, whose intellectual curiosity, determination and integrity are hallmarks of a quintessential Winsor woman.

THE MINKOFF-KELLY FUND

Established in 2013 in memory of beloved teacher Mimi Minkoff P'12 to ensure that an international experience is accessible to all Winsor students. The fund honors Mimi's love of travel and embrace of other cultures, languages and people.

THE PATNI FAMILY GLOBAL FUND

Established in 2016 by the Patni family to support Winsor's global programs, including but not limited to the Global Forum, the Independent Learning Experience, and student and faculty travel. Income from the fund will provide faculty salaries, financial aid, and curriculum development related to global programs.

SLOAN SABLE SCHOLARSHIP FUND

Established in 2009 by Linda Wisnewski and William Collatos in appreciation for the outstanding education, mentorship and nurturing their daughter Adrienne (Class of 2005) received from Ms Sable. Income from the fund will provide tuition assistance to students in need of financial aid.

THE SCHICIANO FAMILY SCHOLARSHIP FUND

Established in June 2014 by the Schiciano Family, the fund recognizes the importance of financial aid in maintaining access to an excellent education. Income from the fund will provide one deserving student with annual tuition assistance.

THE SKEELE SCHOLARSHIP FUND

Established in June 2013 by an anonymous donor to recognize Jennie Skeele's extensive service both to Winsor and to community service in Boston, the fund celebrates excellent, accessible education and the important role of financial aid at Winsor. Income from the fund is used to provide two deserving students with annual tuition assistance, with preference given to students who are in the Steppingstone Foundation or similar programs.

THE WINSOR PROMISE ENDOWMENT FUNDS

Established during the Winsor Promise campaign from 2012–2016. Income from the funds supports faculty salaries, financial aid and other critical school needs as determined by the Trustees.

THE WINSOR PROMISE STEM FUND

Established in 2015 in recognition of Winsor's STEM initiatives and the teaching of design thinking and problem solving. The fund will support a future STEM Coordinator position.

The Winsor Promise Lamp of Learning Society

Throughout the campaign, a focus on the enduring impact of gifts inspired many alumnae, parents and friends to consider ways to sustain Winsor's excellence long into the future. Established in 1990, the Lamp of Learning Society honors those who provide for generations of Winsor students to come by naming the school in their wills, pension plans, insurance policies and life-income gifts. The society welcomed the following new members during Promise. We also celebrate the memory of those generous society members whose planned gifts were realized during the campaign years.

NEW MEMBERS

Elizabeth Bennett Carroll '89
and John A. Carroll, III
Alexandra Coburn '82
John Dubrow and
Andrew Compaine P'20
Sara Rowbotham Cornell '81, P'13, '15
Patience Crozier '92
Joan Dunphy Curwen '42
Fay Dabney '46
Betsy and Mike Feldmann P'09
Robert S. Flynn P'84
Roger B. Gorham
Clare Hawthorne '02
Sylvia Houghton '63
Suzanne Joskow '01
Sharon Lin '95

Tamara Nikuradse and
Scott Matthews P'17
Karen and Warren McFarlan P'92
Kate Merritt '65
Pauline Bray Nutting '57
Mary Byrd Platt '49
Anne Lyman Powers '40, P'76
Keziah Robinson '96
Leila Sales '02
Tatiana Smith '02
Lynda Spence '57, P'90
Mary Ann Dexter Streeter '50
Louise Sunderland '66
Isabel Taube '88
Rebecca Tilney '78

REALIZED PLANNED GIFTS

Anonymous
Guy Alexander
Dorothy Hovey Baldini '45
Sarah Higginson Begley '45
Ellen Dunnell Bennett '48
Carnzu Clark '32
Anne Calkins Cook '41
Joan Dunphy Curwen '42
Barbara Ginn Deely '44
Charlotte B. Heartt P'75
Nancy Hooe Holmes '42
Susan Hedge Hossfeld '38
Dorothy Jenney '43
Ann Nowell Kramer '48
Katharine Lawrence '47
Nancy Hill Payne '36
Martha Weeks Sherrill '40
Margaret Brush Vandermade '38
Margaret Goodhue Whitman '39
Frances Bland Youngblood '56



“The expectation that I would always work for excellence. That’s what I love most about Winsor and what I really think I took away from it. Winsor was the beginning of a lifelong interest in teaching and learning. The faculty was, and still is, so engaged and dedicated. I had such spectacular professional role models—Miss Holman, Miss Hamilton, Miss Littlefield. So Winsor is the cause to which I give most generously. I’m delighted that the *Promise* campaign ensures that Winsor will stay in Boston. Being in this hugely intellectual community on the edge of the city is one of Winsor’s greatest assets. And now this is where it will stay for the next 100 years.”

Jo Hornor Belknap '48





The Winsor School
Pilgrim Road
Boston, Massachusetts
02215

ADDRESS SERVICE REQUESTED

NONPROFIT ORG
US POSTAGE
PAID
AUGUSTA, ME
PERMIT NO 121