

WHY

Say Yes

to GS?



GEORGE  
SCHOOL

**AT GEORGE SCHOOL, WE'RE ALL ABOUT QUESTIONS. A THINKUBATOR THAT NURTURES INQUIRY IN ALL FORMS: WHO? WHAT? WHERE? AND ESPECIALLY HOW? WHY? AND WHY NOT? IF YOU HAVE TO ASK, GS IS THE SCHOOL FOR YOU.**



**Here we welcome the curious and the opportunity to make you curiouiser.** Find an answer? Great. Now go deeper or broader. Question your assumptions and conclusions. Don't just think outside the box. Blast it to pieces.

**You'll find curiosity and its sibling, creativity, everywhere at George School.** From the welcome-to-the-community immersion of New Student Orientation to the most rigorous AP and IB courses. In signature programs from the arts to robotics. In our Quaker heritage, which inspires us to embrace people

of all faiths and encourage them to ask questions (Friends call them queries) on their own spiritual journey.

**We ask a lot of our students.** We want you to work hard, learn loads, have fun, act with integrity, make connections, and keep an open mind and an open heart. You will be enriched by living with people from diverse backgrounds, just as you will be energized by learning—and thinking—across disciplines.



**Yes, we'll ask a lot of you at George School, and you will find the answers.** You'll leave with valuable skills, a changed perspective, and plenty of confidence, with lifelong friends and lasting memories, with precious knowledge and a thirst for more. And you'll have answered the most important question of all: Who will I become @ GS?



George School Admission Office • 215.579.6547 or [admission@georgeschool.org](mailto:admission@georgeschool.org) • [georgeschool.org](http://georgeschool.org)

**Come to George School. Become your best self.**



WHAT

---

Should I

---

Know

---

about GS?

---



GEORGE  
SCHOOL

## SO YOU WANT TO LEARN MORE ABOUT GEORGE SCHOOL? LET'S START WITH THE NUMBERS.

### BY THE NUMBERS

#### 540 students

50% boarding/50% day  
40% US students of color  
28% intl, 37 countries



#### 75 faculty

75% w/advanced degrees  
1:7 faculty-student ratio

#### 240-acre campus

20 mi from Princeton  
30 mi from Philadelphia  
80 mi from NYC



#### ∞ opportunities

16 sports  
44 teams  
14 visual/performing arts  
44 arts classes



#### 95% IB Diploma completion rate

THAT'S HELPFUL BUT HARDLY THE FULL STORY, BECAUSE NOTHING GETS REDUCED TO NUMBERS HERE—EVEN OUR AWESOME MATH PROGRAM.

### BEYOND THE NUMBERS

Thanks to our diverse student body, you'll learn about the world from your peers as well as our global curriculum.



More than educated and experienced, our teachers view mentoring students as their calling. And speaking of calling, we all go by first names, reflecting our commitment to equality and community.

How big is 240 acres? Big enough to lose yourself (figuratively) in the drop-dead gorgeousness.



There are enough sports and arts for everyone to participate, and we all do. Maybe you'll love soccer or equestrian (yes, we have horses), wind ensemble or woodworking.



The challenging IB program can lead to college credit and admission to the most selective universities worldwide. We also offer AP, electives, and lots of other courses to make your GS journey your own.



Of course, there *are* important numbers, like application deadlines (go to [georgeschool.org/apply](https://www.georgeschool.org/apply) for all the details), but first, let's get acquainted. Go online or schedule an interview.



GEORGE SCHOOL

George School Admission Office • 215.579.6547 or [admission@georgeschool.org](mailto:admission@georgeschool.org) • [georgeschool.org](https://www.georgeschool.org)

# Come to George School. Grow exponentially.

SAY  
YES TO GS!



[www.georgeschool.org](http://www.georgeschool.org)



CAN

My Family

Afford GS?

HINT:  
THE ANSWER  
IS YES.



GEORGE  
SCHOOL

## A GEORGE SCHOOL EDUCATION IS PRICELESS, BUT IT MAY SEEM EXPENSIVE. MANY FAMILIES WONDER IF THEY CAN AFFORD IT. HERE'S WHY WE THINK YOU CAN:

**We meet the full demonstrated financial need of our families** as determined by NAIS best practices. And we do it with \$10+ million in grants—not loans—so you won't have debt after graduation.

**More than half of our students receive financial aid**, including many considered middle income. It's our mission to work with people at all income levels, so don't assume you won't qualify.



**In addition to need-based aid, we offer \$1,000–\$15,000 merit awards** (renewed annually) for students who demonstrate exceptional intelligence, optimism, curiosity, and leadership. Everyone who meets the admission application deadline is considered. No need to apply separately.

### THE PROCESS

Applying for financial aid at George School is straightforward.

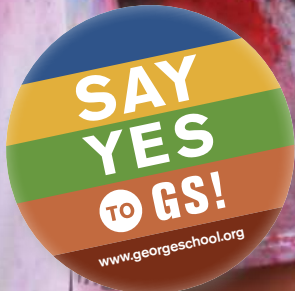
- 1 **Submit a financial aid application to School and Student Services (SSS) by January 15. Materials include the Parents' Financial Statement (PFS), W-2 forms, and tax returns (personal and, if applicable, corporate) with all schedules and statements.**
- 2 **Receive notification of financial aid status as determined by best practices with the admission decision on March 10.**

**A George School education is an investment in the future**, one that has paid huge dividends for thousands of graduates. We invite you to talk to our financial aid officers to better understand GS affordability.



George School Admission Office • 215.579.6547 or [financialaid@georgeschool.org](mailto:financialaid@georgeschool.org) • [georgeschool.org](http://georgeschool.org)

# Come to George School. Invest in yourself.



HOW

---

Can I Go

---

Global

---

@ GS?

---



GEORGE  
SCHOOL

**WANT TO STUDY GLOBAL POLITICS WITH INTERNATIONAL CLASSMATES, LEARN CHINESE, OR DO SERVICE LEARNING IN RWANDA? YOU'VE COME TO THE RIGHT PLACE. AT GEORGE SCHOOL, WE THINK GLOBALLY, AND YOU WILL, TOO.**



**Here you will learn about the languages and cultures of your friends**, who represent nearly 40 countries and share their heritage with our inclusive community.

**You will approach your studies with a global perspective**—not just in courses like economics and world religions, but in statistics, environmental science, and robotics, too. George School students are guided to make connections across disciplines and across cultures, gaining a nuanced understanding of diverse topics and synthesizing divergent viewpoints.

**You will learn a second (or third) language** through our excellent language program, which promotes appreciation for other cultures while teaching vital communication skills for a multicultural world. We offer four languages, with intensive, IB, AP, and seminar options.

**And you will have the opportunity to learn while traveling—and serving—abroad.** Taking part in our service learning trips may polish your language skills while broadening your horizons and changing your life.



George School Admission Office • 215.579.6547 or  
admission@georgeschool.org • [georgeschool.org](http://georgeschool.org)



### **GEORGE SCHOOL LANGUAGES**

**Español  
(Spanish)**

**Français  
(French)**

**Lingua Latina  
(Latin)**

**中文  
(Chinese)**

**Come to George School. Experience the world.**



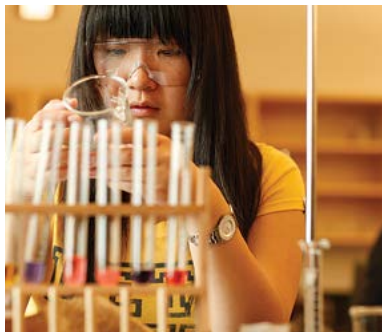


HOW  
Can I Be  
Challenged  
by the IB  
@ GS?



GEORGE  
SCHOOL

**WANT TO USE YOUR  
CURIOSITY AND CREATIVITY  
IN AN INTELLECTUAL,  
INTERCULTURAL, AND  
INTERDISCIPLINARY  
PROGRAM LEADING TO  
COLLEGE CREDIT? MEET  
THE INTERNATIONAL  
BACCALAUREATE (IB)  
PROGRAM.**



**The IB is designed for “inquiring, knowledgeable, and caring young people who are motivated to succeed.”** Just like George School. Its heart is the IB Diploma, a program for juniors and seniors that includes rigorous classes across six broad subject areas—half Higher Level and half Standard Level—plus Theory of Knowledge, which will get you thinking critically about, well, thinking. Successful completion results in a second, globally recognized diploma.

Here IB is not just studied. It’s “lived.” Assessments go beyond a single exam to include self-designed experiments, portfolios, and research. Creativity, activity, and service components add to a 360-degree approach that’s as well-rounded as you are.

**Or you can take individual IB courses to earn IB certificates.** Just combine them with any of our many non-IB classes, including AP. The beauty of our bespoke experience is that you can tailor it to your needs.

Regardless of your path through George School, taking IB courses will open your eyes and your mind. To paraphrase Descartes, “IB, therefore I think!”



George School Admission Office • 215.579.6547 or  
admission@georgeschool.org • [georgeschool.org](http://georgeschool.org)



**FROM '85 TO 95%**

**GS has a 95%  
IB Diploma  
completion  
rate—among the  
world’s best. Since  
we’ve offered the  
program for 35+  
years, we’re very  
good at it.**



**Come to George School. Make learning incredIBle.**



WHAT  
Is Student  
Life Like

@ GS?



GEORGE  
SCHOOL

**THERE'S MORE TO  
GEORGE SCHOOL  
THAN THE "SCHOOL"  
PART. LIFE OUTSIDE  
ACADEMICS IS JAM-  
PACKED WITH WAYS TO  
EXPLORE INTERESTS  
AND TALENTS AND  
SHARE THEM WITH THE  
COMMUNITY.  
PLUS, IT'S FUN!**



**As a boarding school, we're doing, learning, and living 24/7** (though we sleep, too). Weekend events, for day students as well as boarders, include off-campus trips and on-campus festivals, kayaking and cooking. We celebrate our diverse cultures, cheer each other on, and have a great time.

**We also put our hearts into clubs,** from the serious issues addressed in Model UN and affinity groups to the entertainment put on by Art for Relief

and Goldfish 'n Java. (Don't worry: No animals are harmed in the live music staged by this group.) Pastimes become passions when shared with friends.

**As a community of trust and high expectations, we take leadership seriously** (though we manage to laugh, too). Take on a role with a lot of responsibility, like peer counselor, international student mentor, or prefect. Join Student Council, the Discipline Committee, or even the Board of Trustees! You'll learn leadership skills by practicing the real thing.

Student life at GS isn't just extracurricular. It's extraordinary.



George School Admission Office • 215.579.6547 or  
admission@georgeschool.org • [georgeschool.org](http://georgeschool.org)



## **GS LIFE WITH A GS SPIN**

**We don't have room to list all the opportunities at George School—many unique to GS—but check them out on our website or invent them yourself.**



**Come to George School. Bring student life to life.**



HOW  
Can I Be  
Amazed  
by Math

@ GS?



GEORGE  
SCHOOL

**AT GS, WE BELIEVE IN THE ABSOLUTE VALUE OF MATH. YOU'LL LEARN TO THINK LOGICALLY AND IMAGINATIVELY, ANALYZE, SYNTHESIZE, PROVE, DISPROVE, AND ACQUIRE OTHER MATH-Y SKILLS APPLICABLE TO ALL SUBJECTS AND TO LIFE.**



**George School offers a variety of math classes and pathways**, which meet you where you are and take you as far as you want to go. Courses include advanced, intensive, AP, and IB options covering the usual subjects (algebra, trig, geometry, calculus) plus computer science, robotics, and statistics. It's all part of developing the numerical acumen needed in a complex world.

**Those wanting the ultimate—make that penultimate—math challenge** can take IB Higher Level Math or AP BC Calculus. But if you want to go still further, there's Further Math, covering topics like linear algebra, discrete mathematics, and number theory. If you're a math person—and everyone is in their own way (typical GS!)—you can take it all in and be supremely prepared when you leave.



**But math at GS isn't limited to the classroom.** Members of our Math Team not only do the math; they do it justice. Routinely shining in interscholastic tournaments, they demonstrate the potential of problem-solving, the elegance of reasoning, and the excitement that's possible with math.

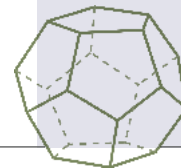


George School Admission Office • 215.579.6547 or [admission@georgeschool.org](mailto:admission@georgeschool.org) • [georgeschool.org](http://georgeschool.org)



## ELITE MATHLETICS

Last year our Math Team placed 21st in the Purple Comet competition (880+ teams worldwide) and 1st in the Philadelphia Math League—outstanding results any way you figure it.



# Come to George School. Feel the power of math.



WHERE

---

Can Science

---

Take Me

---

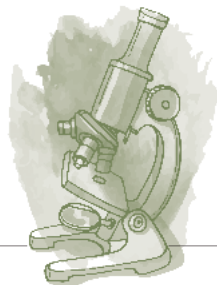
@ GS?

---



GEORGE  
SCHOOL

**THE PURPOSE OF SCIENCE AT GEORGE SCHOOL ISN'T JUST TO UNDERSTAND KINETICS, KINEMATICS, AND THE KREBS CYCLE. IT'S TO UNDERSTAND THE WORLD.**



**Here curious students become astute (and still curious) graduates**—as engineers, doctors, or science-savvy citizens. We start by planting firm roots in chemistry, biology, and physics, with intensive options in each.

**With a strong STEM foundation, you can take the science(s) that speak to you.** Dig deeper into the scientific trinity via IB or AP, or branch off into cognitive neurology, animal behavior, robotics, or environmental science. The environment is important to us—not only in class, but in our actions and discussions. “Faithful

stewardship of the earth” is even in our mission statement.

**GS science teaches us to question**, experiment, analyze evidence, refine hypotheses, get messy (safely!) through lab and field work, and address problems. (Imagine your bio class pivoting to study COVID right after it upended the world.) The IB Science Symposium is emblematic. Culminating an upper-level project, students design their own experiments, work collaboratively, and present results to the community like real scientists—because they are.



### **NOBELUMNI**

**GS boasts two Nobel laureates: theoretical physicist Kenneth Wilson '52 and molecular geneticist Mario Capecchi '56, who inspires today's students when he returns to campus.**



George School Admission Office • 215.579.6547 or [admission@georgeschool.org](mailto:admission@georgeschool.org) • [georgeschool.org](http://georgeschool.org)

**Come to George School. Dare to wonder.**





WHERE

Can I Go

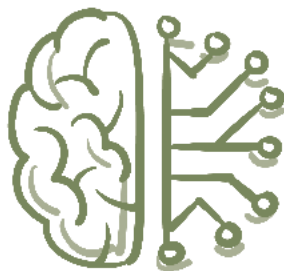
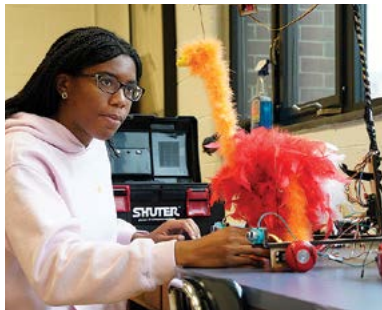
with Robotics  
& Computing

@ GS?



GEORGE  
SCHOOL

**GS PROGRAMMING AND ROBOTICS DEFIES LABELS. MIXING MATH/SCIENCE WITH ART/DESIGN, THE THEORETICAL AND HANDS-ON, AND ARTIFICIAL INTELLIGENCE WITH THE REAL THING, IT'S "STEAM" ROLLED INTO ONE SUBJECT.**



**Your knowledge—like your very own robot—is created from the ground up** through a cross-disciplinary, integrated, project-based approach that toggles between coding, robotics, and electronics. You'll learn a new language (Arduino C) while expressing who you are through the intelligent machines you program. Will yours play soccer, graph math functions, navigate a maze, or sing?

**After Physical Computing and Robotics,** you can study AP computer science, advanced programming

(microcontroller, Java), and artificial intelligence, a college-level curriculum covering Nash equilibria, propositional logic, genetic algorithms, and neural networks. Got all that? You will.

**While you build circuits and connections across skill sets, you'll also have fun.** We take part—and excel—in interschool competitions, like the International Fire Fighting Home Robot Contest and our Annual Robotics Invitational, a hackathon we host on campus. At year-end, we hold an open house to delight the community with our sumo-wrestling, poetry-writing, truly amazing robots.



George School Admission Office • 215.579.6547 or [admission@georgeschool.org](mailto:admission@georgeschool.org) • [georgeschool.org](http://georgeschool.org)

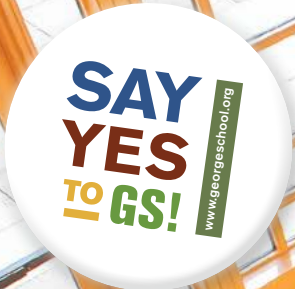


### **IN THE TOOLBOX**

**Boss laser cutter**  
**3D printers**  
**CAD software**  
**Industrial arm**  
**Plus microcontrollers, motherboards, battery packs, sensors, actuators...**



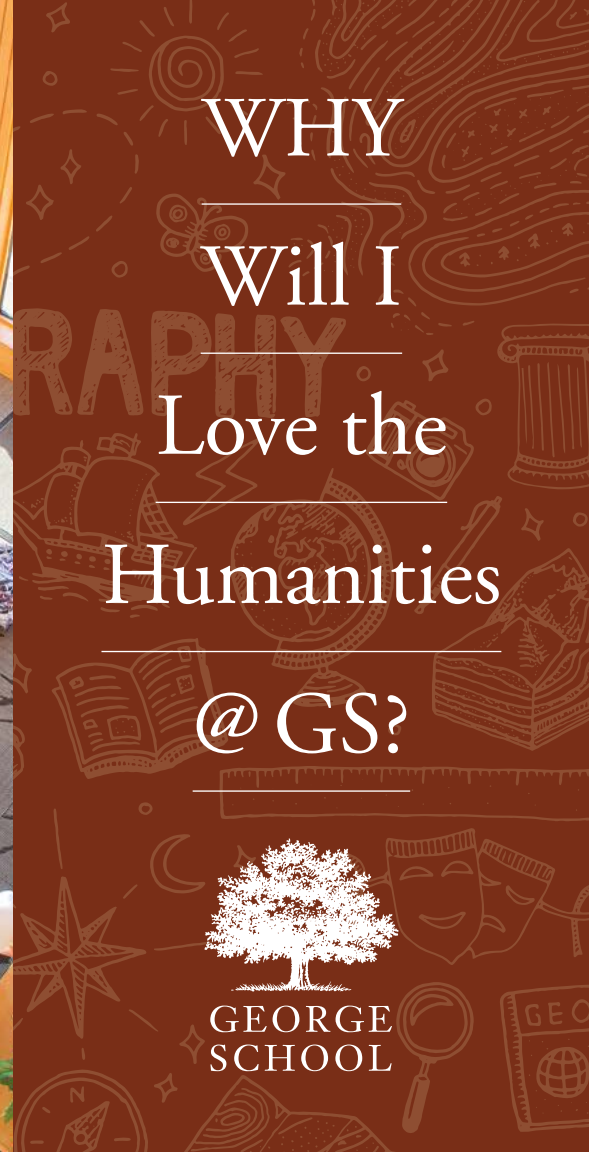
**Come to George School. Pick up STEAM.**



WHY  
Will I  
Love the  
Humanities  
@ GS?



GEORGE  
SCHOOL



**GS HUMANITIES DEPARTMENTS TEACH MORE THAN WHAT'S IN THEIR NAMES. THEIR REAL FOCUS IS HUMANITY ITSELF. BY LOOKING AT ART, LITERATURE, FAITHS, FOLLIES, PAST, AND PRESENT, YOU'LL SEE THE BIG PICTURE.**



**History goes beyond dates and dead guys** to explore broader context and long-lasting significance. And it goes beyond traditional history, too. In courses on human geography, government, politics, economics, psychology, and even media literacy, you'll address fundamental questions like "How did we get here?" from varied angles.

**Naturally, English will teach you to read insightfully and write incisively**—as well as creatively—but it will also build your analysis, synthesis, and

critical-thinking muscles. Religion covers the world's faith traditions (including Quakerism) plus social justice, personal development, and lesser-known ologies like cosmology and epistemology. There's something for everyone, including languages, art, and the challenge of IB and AP.

**We believe in breaking down barriers in both curriculum and approach.** You'll make as many connections between subjects as you will within them, and find your voice by hearing so many others. Don't be surprised if when you leave, you have a new perspective on being human.

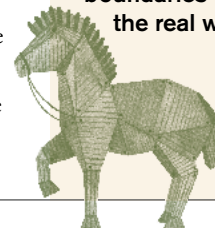


George School Admission Office • 215.579.6547 or  
admission@georgeschool.org • [georgeschool.org](http://georgeschool.org)



### **MANY ANGLES ON MEDIA**

**Typical of our interdisciplinary approach, our media literacy course looks at media historically and artistically, as consumers and makers, crossing boundaries like the real world.**



# Come to George School. Get to know people.



HOW  
Will I Win

with  
Athletics

@ GS?



GEORGE  
SCHOOL

**AT GS, WE ARE ALL SCHOLAR-ATHLETES. OUR LEARNING COMMUNITY IS ALSO A PLAYING COMMUNITY, WHERE EVERY STUDENT TAKES PART, BUILDS SKILLS, STAYS FIT, MAKES FRIENDS, AND HAS A BALL.**



**With 44 teams across 16 sports at four levels** (varsity, JV, 3rd, and developmental), there is plenty to challenge experienced competitors and newcomers alike. You'll hone your athletic abilities while developing discipline, teamwork, confidence, and lasting memories. You'll play hard for yourself and your teammates, while the Cougar-loving community cheers you on (sometimes with face paint and music). You'll learn from experienced coaches in impressive facilities,

including our 100,000-square-foot fitness center—with pool, gyms, strength and conditioning center, wrestling room, even a yoga studio—10 playing fields, all-weather track, tennis courts, and equestrian center.

**You can also learn about athletic training or choose a PE class** from aerobics to weight training, gardening to yoga. Like our teams, there are options that suit any interest and that foster the wellness essential to a full, rich GS experience.

## SPORTS

<b>Baseball</b>	<b>Golf</b>
<b>Basketball</b>	<b>Lacrosse</b>
<b>Cheerleading</b>	<b>Soccer</b>
<b>Cross Country</b>	<b>Softball</b>
<b>Equestrian</b>	<b>Swimming</b>
<b>Field Hockey</b>	<b>Tennis</b>
<b>Football</b>	<b>Track</b>
	<b>Volleyball</b>
	<b>Wrestling</b>



George School Admission Office • 215.579.6547 or [admission@georgeschool.org](mailto:admission@georgeschool.org) • [georgeschool.org](http://georgeschool.org)

**Come to George School. Play your heart out.**



WHAT

Can I

Create

in the Arts

@ GS?



GEORGE SCHOOL

**AT GS, OUR LOVE OF ART IS DISPLAYED EVERYWHERE. IN GALLERIES AND STUDIOS, ON STAGE AND SCREEN, THROUGH ALMOST 50 COURSES AND 12 FACULTY (ALL PROFESSIONAL ARTISTS), AND IN THE CREATIVITY OF OUR STUDENTS.**



**There are so many artistic choices**—like whether to dance or direct or design furniture from GS trees. Extensive course options let you dive deep into one art or make a mosaic out of several. Outside class, you can put your art and soul into groups like *Argo* (art and literary magazine) and Art for Relief (charity arts event), and with 13 annual exhibits and performances, we regularly share our talents as a community.

**We also share those talents with the world, and they notice.** Students have performed at Carnegie Hall and been

honored at the Tribeca Film Festival. Their work is routinely selected for local exhibits and scholastic arts prizes. GS was even named Outstanding Visual Arts Community by the PA Art Education Association.

**But the rewards of making art at GS go beyond laurels and beyond the art itself.**

The real prize is what you can become through art: creative, to be sure, but also focused, disciplined, collaborative, open-minded, observant, self-expressive, and very confident.



George School Admission Office • 215.579.6547 or [admission@georgeschool.org](mailto:admission@georgeschool.org) • [georgeschool.org](http://georgeschool.org)



## PERFORMING ARTS

**Dance**

**Film, Media Literacy**

**Music: audio recording, instrumental, vocal**

**Theater: acting & directing, design & production, performance classes**

## VISUAL ARTS

**Art History**

**Ceramics**

**Digital Imaging**

**Graphic Design**

**Painting & Drawing**

**Photography**

**Sculpture**

**Woodworking**

**Come to George School. Create some magic.**