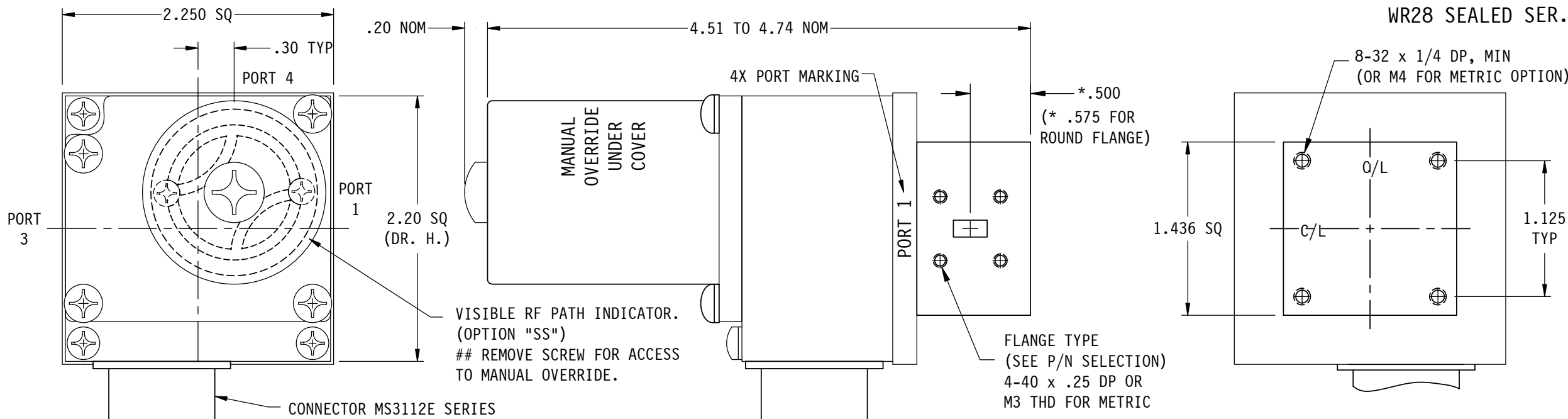


WR28 SEALED SER.



VISIBLE RF PATH INDICATOR. (OPTION "SS")
REMOVE SCREW FOR ACCESS TO MANUAL OVERRIDE.

SPECIFICATIONS;
 FREQ RANGE (GHz) — 26.5 - 40.0
 VSWR — 1.15 : 1 MAX, 1.10 : 1 TYP
 INSERTION LOSS — 0.15 db, MAX
 ISOLATION — 55 db, MIN
 SWITCHING TIME — 50 mSec, TYP
 PRESSURE — TO 30 PSIG (R-F HEAD)
 FINISH — IRIDITE ON FLANGES, SATIN BLACK ENAMEL ON BODY.

- NOTES:
 1. ** MANUAL SWITCH DOES NOT INCLUDE RECEPTACLE.
 2. BLUE BOXES ARE REQUIRED FIELDS.
 3. !! IF OPTION IS NOT REQUIRED, LEAVE (GOLD BOX) BLANK

VOLTAGE	AMPS	CODE
+22 TO +32	0.9	A
-22 TO -32	0.9	B
+10 TO +14	1.5	C
-10 TO -14	1.5	D
+44 TO +54	0.5	E
-44 TO -54	0.5	F
117VAC	0.5	H
235VAC	0.5	K
MANUAL **		M

PART NO. SELECTION

CODE	FLANGE
P	PLAIN
C	CHOKE
O	O-RING
R	ROUND

CODE	!! OPTION
M	METRIC THREAD

CODE	ENVIRONMENTAL
S	SEALED
SS	## SEALED WITH REMOVABLE SCREW

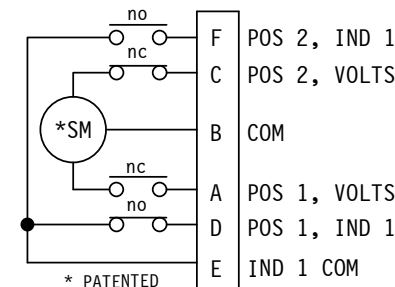
!! OPTION	CODE
SPDT	1

V			
PART NO. SERIES	V CODE	FAILSAFE !! OPTION	F CODE

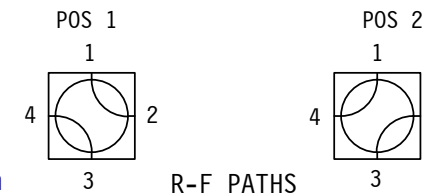
PART NO. EX.: VAOS3

WR28 LATCHING WG SWITCH, +28VDC, O-RING FLANGE (SQUARE), SEALED, CIRCUIT #3.

TOP EXTERIOR SCREW CAN BE REMOVED ALLOWING ACCESS TO MANUAL OVERRIDE. No. 1 PHILLIPS SCREWDRIVER REQUIRED.



STD. ELECTRICAL CKT. Shown in Position 1 ONE FORM C



!! ELECTRICAL CIRCUIT (IF OTHER THAN STD.) SEE SCHEMATIC PAGE

WEB SITE: www.sectormicrowave.com

ZONE	LTR	DESCRIPTION	APV	DATE	TOLERANCES:	DRAWN	AC	7/25/06	SECTOR MICROWAVE IND., INC.			
	B	UPDATED VSWR SPEC	RR	6/24/09	DECIMALS	CHECKED			WR28 WG SW. : SEALED SERIES			
	A	RELEASED.	TN	7/25/06	2 PLACES: +/- .03	APVD	RR	7/25/06	WR28 SEALED SER.			
					3 PLACES: +/- .010	APVD			SCALE: NONE	UNIT WT.	SHEET 1 OF 1	B
					FRACTIONS: +/- 1/32							REV.
					ANGLES: +/- 1/2 deg.							