

U-xx SHELTERED SER.

SPECIFICATIONS:

- FREQ RANGE (GHz) — 12.4 TO 18.0
- VSWR (MAX) — 1.10 : 1 (1.08:1 TYP)
- INS. LOSS (MAX) — 0.10 db
- ISOLATION (MIN) — 60 db
- SWITCHING TIME — 50mSec, TYP
- LIFE — 100,000 CYCLES, MIN
- VOLTAGE — SEE P/N SELECTION
- PRESSURE — TO 30 PSIG
- FINISH — IRIDITE ON FLANGES, SATIN BLACK FINISH REST OF BODY.

VOLTAGE	AMPS	CODE
+22 TO +32	0.9	A
-22 TO -32	0.9	B
+10 TO +14	1.5	C
-10 TO -14	1.5	D
+44 TO +54	0.5	E
-44 TO -54	0.5	F
117VAC	0.5	H
235VAC	0.5	K
MANUAL **		M

PART NO. SELECTION

CODE	FLANGE
P	PLAIN
C	CHOKE
O	O-RING

CODE	!! OPTION
M	METRIC THREAD

(USED IN A SHELTERED ENVIRONMENT)

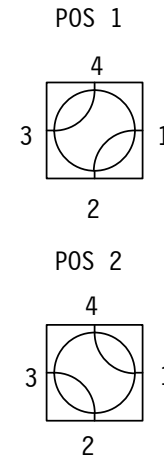
CODE	ENVIRONMENTAL
W	SHELTERED

FOR OTHER ELECT CKT'S SEE SCHEMATIC PAGE.

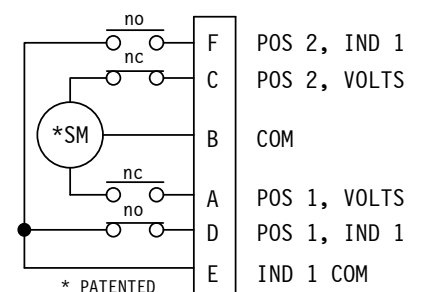
U-	SPDT	1	!! ELECTRICAL CIRCUIT (IF OTHER THAN STD.)
PART NO. SERIES	U-	CODE	

PART NO. EX.: U-APW2

WR62 WG SWITCH, +28VDC, PLAIN FLANGE, SHELTERED, CKT #2



R-F PATHS



STANDARD ELECT CKT

Shown in Pos 1 ONE FORM C

NOTES:

1. ** MANUAL SWITCH DOES NOT INCLUDE RECEPTACLE.
2. BLUE BOXES ARE REQUIRED FIELDS.
3. !! IF OPTION IS NOT REQUIRED, LEAVE (GOLD BOX) BLANK

WEB SITE: www.sectormicrowave.com

ZONE	LTR	DESCRIPTION	APV	DATE
	A	RELEASED.	RR	1/28/04
REVISIONS				

TOLERANCES: DECIMALS 2 PLACES: +/- .03 3 PLACES: +/- .010 FRACTIONS: +/- 1/32 ANGLES: +/- 1/2 deg.	DRAWN	AC	1/28/04
	CHECKED		
	APVD	RR	1/28/04
	APVD		

SECTOR MICROWAVE IND., INC.			
WR62 SHELTERED SERIES WITH DR. HOUSING			
SIZE	L	CAGE CODE	53263
		U-xx SHELTERED SER.	A
SCALE: FULL	UNIT WT.	SHEET 1 OF 1	REV.