



LUXURY LIFESTYLE LONDON

👑 *The Xpander Prestige Group*



Shore House

Qatar

A refined and delicate landscape intervention characterizes the outdoor area of the Shore House: the design created a harmonious balance, in materials and natural essences, with the surrounding context. Landscape wisely defines the different areas of the outdoor life, their relationship with the shore, with the sky and with the horizon.

The LLL system of sound modules perfectly blends with the concept that outlined the landscape project, both in terms of materials and shapes.

The walnut travertine Cylinders vanish into the bamboo hedges, the sonic Pergolas blend with the shading structure, the travertine Spheres integrate the lawn, the Cubes establish a relationship with the architecture in their volumes and with the landscape in their materiality.

Such a sensibly defined sound space adds a magical dimension to the space, where the whole landscape becomes a single resonant system.



MODULES



4 x **Small Helmet**
5, 7, 9, 11



4 x **Cube**
4, 6, 8, 10



2 x **Sphere 470**
1, 12



2 x **Cylinder**
2, 3

SPECIFICATIONS

Project

Shore House

Location

Doha, Qatar

Area

2900 mq

Modules

n° 16

Typology

Outdoor



Kolghassi Residence

Jordan

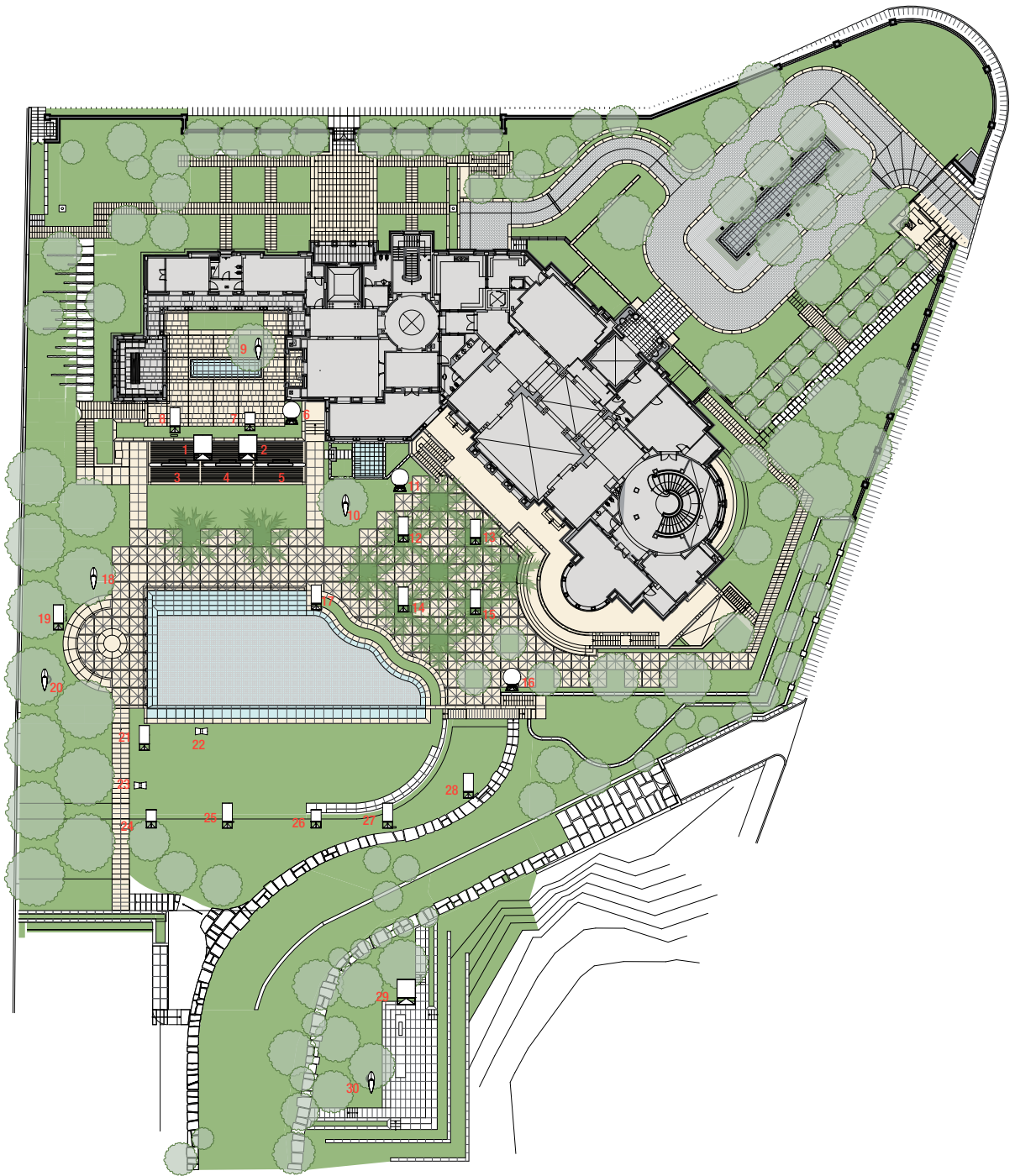
In each project landscape architect Vladimir Djurovic seeks to capture the essence of the place and the spirit of the surrounding landscape; embracing the five senses as the means to reach the soul, every space and every garden are imbued with a sense of delicate and ephemeral grace that makes them timeless.

The ephemeral and the eternal are both essential to his composition of spaces: shadow, light, petals, leaves, sound, water in motion are complemented by the solidity and purity of created forms.

In the project for the Kolghassi residence private garden a skillful balance of clear geometry and natural spontaneity, of ephemeral and eternal in terms of shapes and materials, managed to capture the essence of a traditional Islamic garden and translate it into an expression that reflects its context and contemporary age.

The sound design of the garden was certainly a fundamental element of this sensorial approach to landscape design; it was also one of the largest projects undertaken by Luxury Lifestyle London.

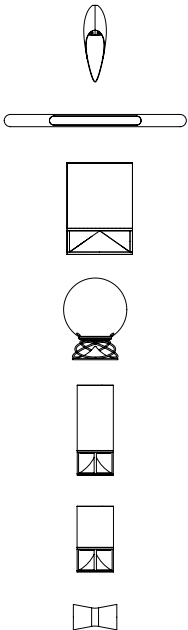
The travertine stone used around the mansion is also used for the sound modules establishing a connection with the materiality of the house (Cubes and Spheres), while Cylinders are in black granite, so to disappear in the shadows of the shrubs and plants, turning the solid material into an ephemeral element that dissolves into nature. In the main part of the garden, 3 carbon-fiber Pergola speakers and 2 travertine Cubes help creating an outstanding clarity and level of sound underneath the overhanging pergola, supported by Tall Cylinders, Sphere 470 in Travertine and Small Drops all in synergy creating a truly multidimensional and amazing sound environment.





MODULES

SPECIFICATIONS



5 x **Small Drop**
9, 10, 18, 20, 30

3 x **Pergola**
3, 4, 5

3 x **Cube**
1, 2, 29

3 x **Sphere 470**
6, 11, 16

11 x **Cylinder**
8, 12, 13, 14, 15, 17, 19,
25, 26, 27, 28

3 x **Small Cylinder**
7, 24, 26

2 x **Yoyo**
22, 23

Project
Kolghassi Residence

Location
Amman, Jordan

Area
5500 mq

Modules
n° 30

Typology
Outdoor







Multiplicity

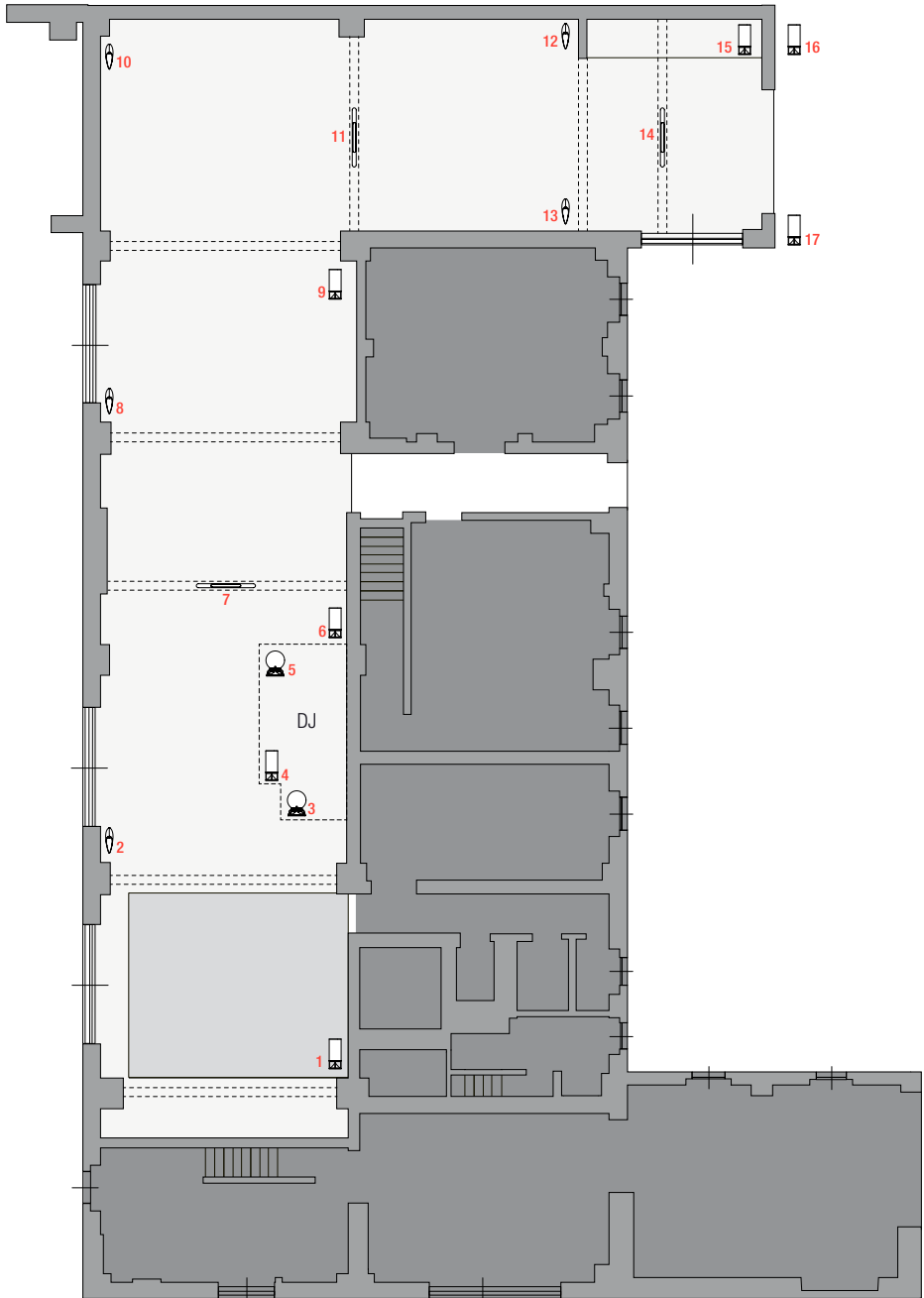
Italy

Zaha Hadid's living forms at the Fonderia Napoleonica have inspired LLL to design a site specific sound space, conceived and dedicated to the presence of the Hadid's new seating collections and to their peculiar attitude to inhabit, mediate and transfigure any human habitat into an pure aesthetic and multi-perspective experience.

LLL goal has been to translate their presence into a "dedicated soundscape", structurally and sonically: an immersive sound space design, characterized by the combination of suspended and floor-standing electroacoustic diffusors, with different directional properties.

The sonic elements were chosen from the AS collection to perfectly fit the installation, being materially coherent and almost fading into the existing structure in order to enhance the architectural space and free its vivid human and formal relational power.







MODULES

5 x **Small Drop**
2, 8, 10, 12, 13

3 x **Pergola**
7, 11, 14

2 x **Sphere 360 sub**
3, 5

7 x **Cylinder**
1, 4, 6, 9, 15, 16, 17

SPECIFICATIONS

Project
Multiplicity

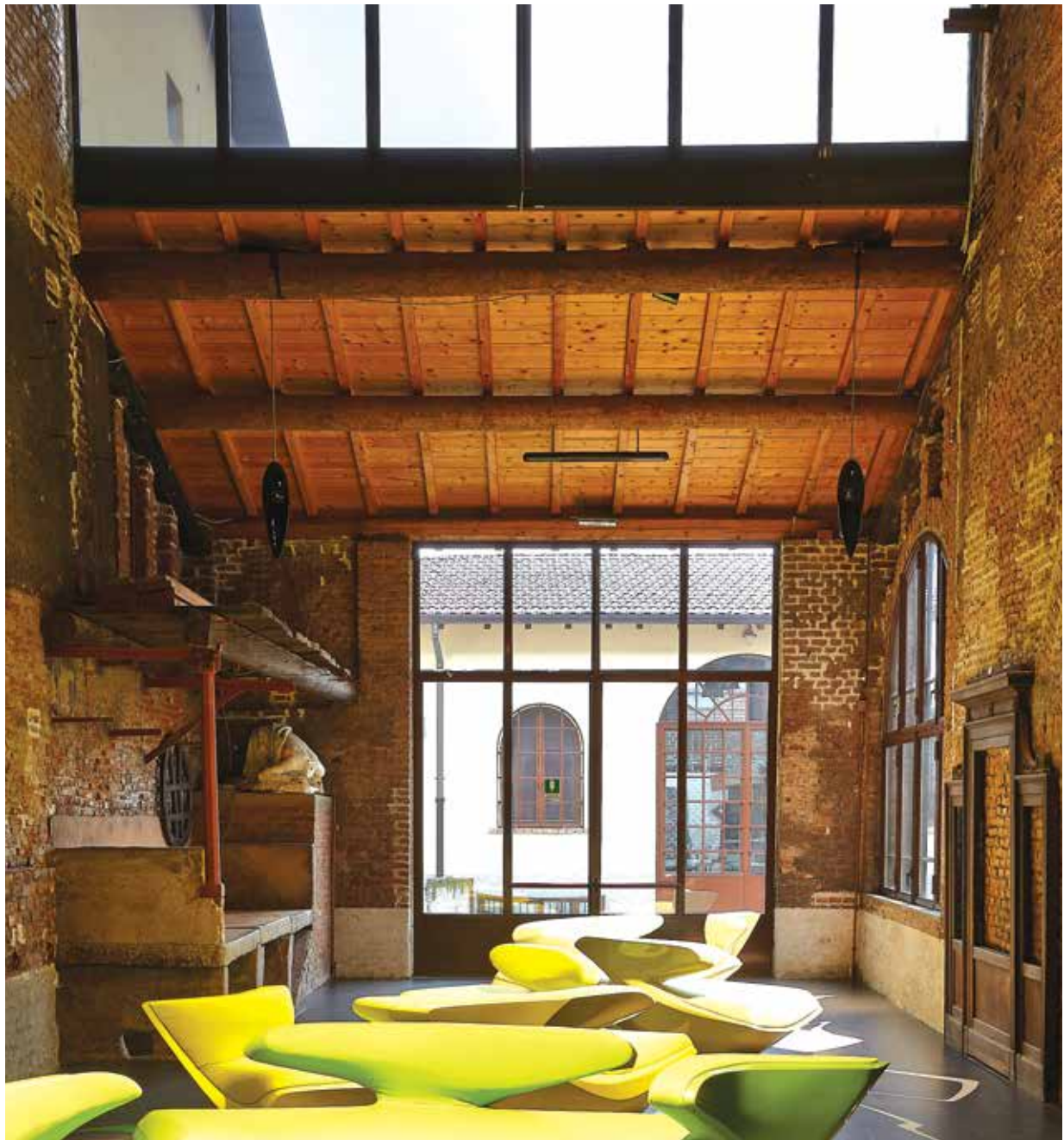
Location
Fonderia Napoleonica, Milan, IT

Area
300 mq

Modules
n° 17

Typology
Indoor









Nota Menu

| Colazione | Pranzo | Merenda | Bevande |
|---|--|--|--|
| • Croissant & marmellata - 1,00€ • Muffin cioccolato - 0,80€ • Cioccolato con mandorle - 1,20€ • Cioccolato al latte - 1,00€ • Cioccolato bianco - 1,00€ • Cioccolato al cacao - 1,00€ • Cioccolato al latte - 1,00€ • Cioccolato al cacao - 1,00€ | • Pasta - 1,50€ • Hamburger - 2,50€ • Sandwich - 1,50€ • Panino - 1,50€ • Pizza - 2,50€ • Pasta - 1,50€ • Hamburger - 2,50€ • Sandwich - 1,50€ • Panino - 1,50€ • Pizza - 2,50€ | • Cioccolato - 1,00€ • Muffin - 0,80€ • Cioccolato - 1,00€ • Muffin - 0,80€ • Cioccolato - 1,00€ • Muffin - 0,80€ • Cioccolato - 1,00€ • Muffin - 0,80€ | • Caffè - 0,80€ • Tè - 0,80€ • Succo - 1,50€ • Acqua - 0,50€ • Caffè - 0,80€ • Tè - 0,80€ • Succo - 1,50€ • Acqua - 0,50€ |



Dawawine Cultural Center

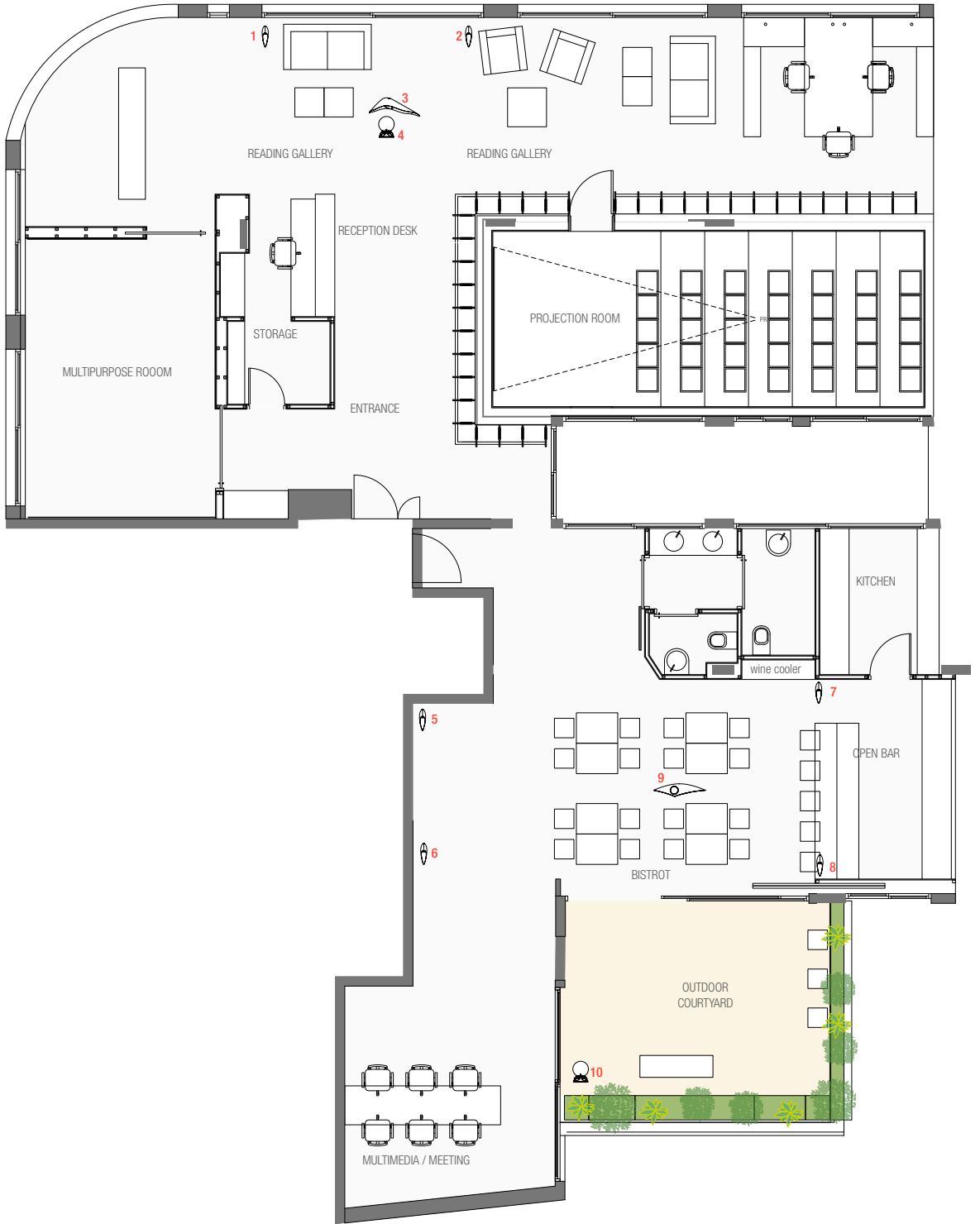
Lebanon

The Dawawine, “espace des arts de la scène, du son, et de l’image”, is the newest cultural center in Beirut where performance, music and cinema finally meet.

Designed by architect Jihad Kiamé, the nonprofit space is light and spacious, a modern, second-floor space in a modernist building in the Gemmayzeh district, strongly characterized by the elegantly curved, floor-to-ceiling bookshelves that defines a central volume “hiding” an intimate 32-seat movie theater with a state-of-the-art sound system. In addition to the cinema, it houses a bistro, serving excellent coffee and food, a library and bookshop specializing in books on film, dance, theater and music, and a conference room, which can be rented out by groups or individuals looking for a quiet, private space to work. Sleek and streamlined, it is still relaxed and cozy, peppered with squashy sofas where visitors can park themselves to chat or peruse the impressive collection of books.

A distinctive feature of this amazing space, where sound plays such a central role, is the Luxury Lifestyle London’s sound space design developed by our partner 21dB, arranged specifically for the various spaces in order to be flexible with the center’s needs and to accommodate various kind of events, from live sound performances to poetry, from conference to various music sessions.

The choice of different AS modules made possible to perfectly tailor sound to the use of each space and to make each space unique, from the outdoor terrace, to the bistro, to the reading gallery.





MODULES



1 x **Dolphin**
4



1 x **Shark**
14



6 x **Small Drop**
1, 2, 5, 6, 7, 8



2 x **Sphere 470**
9, 10

SPECIFICATIONS

Project

Dawawine Cultural Center

Location

Gemmayzeh, Beirut, Lebanon

Area

300 mq

Modules

n° 10

Typology

Indoor









Casa Cubo

Switzerland

The “Casa Cubo” is nestled in a hillside, in a leading and wonderful location, overlooking the alpine mountain range.

A great eye over the landscape, the house is a volume that dematerializes so to be perceived in all its lightness despite the materiality that characterizes it. The designer has been able to skillfully balance physical and immaterial elements, wood and stone light and sound.

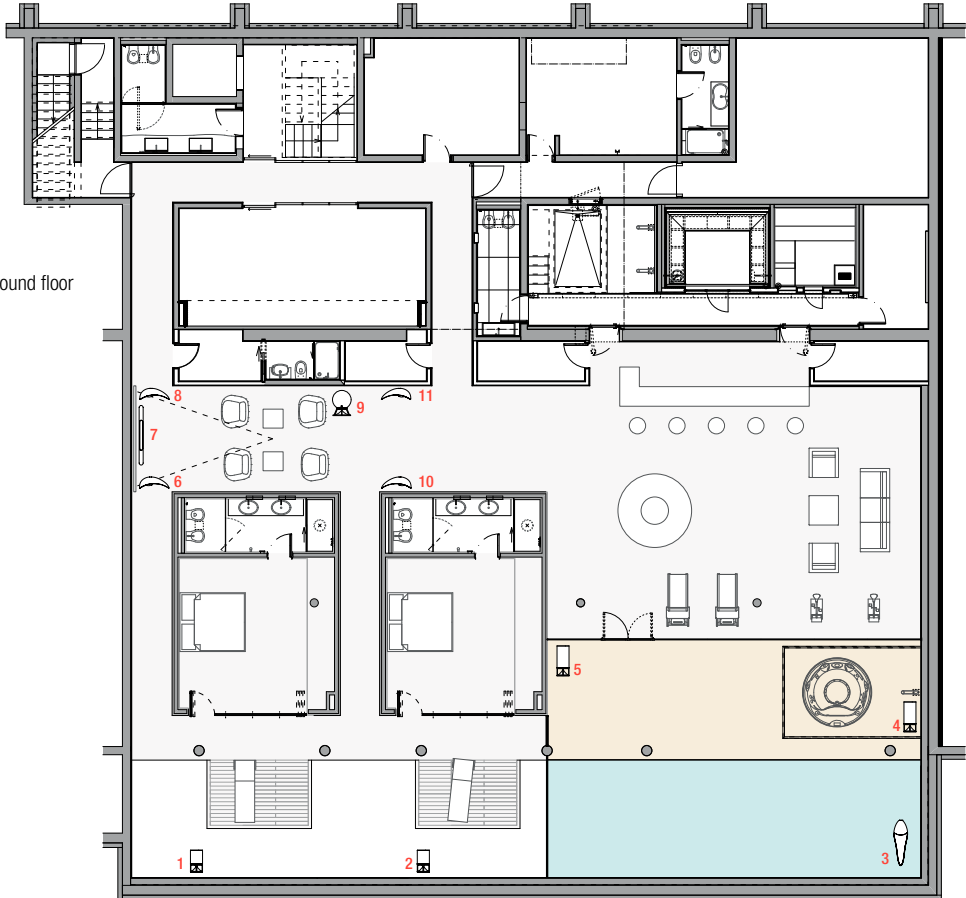
The interior spaces, cozy through the use of stone and wood have plenty of natural light and they frame extensive views over the landscape. The sound element plays a key role as well, both in its materiality, with the travertine Spheres in the living room, and in its immateriality, defining a bubble of sound around the home-cinema area by using the Small Helmets, AS highly directional sound modules.

The wellness-solarium area, despite being underground, is pervaded with natural light through large skylights emerging from the snow; the combination of the Cylinder directional modules in Zebrino marble and of the Drop over the pool defines a highly natural sound space that helps creating the feeling of actually being sunbathing outdoor.

basement



ground floor





MODULES



4 x **Small Helmet**
6, 8, 10, 11



1 x **Drop**
3



1 x **Pergola**
7



3 x **Sphere 360**
9, 13, 14



4 x **Cylinder**
4, 5, 12, 15



2 x **Small Cylinder**
1, 2

SPECIFICATIONS

Project

Casa Cubo

Location

Saint Moritz, CH

Area

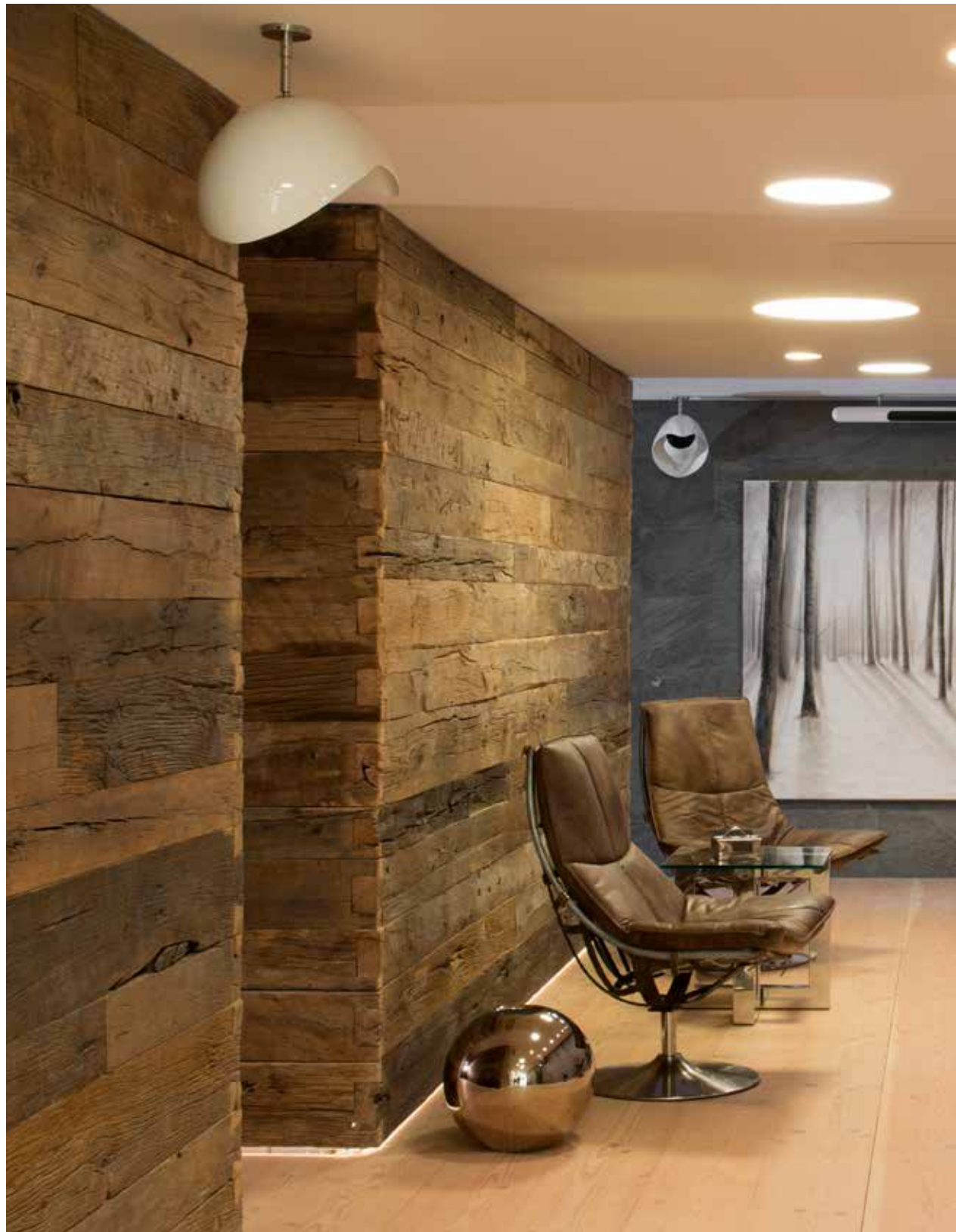
980 mq

Modules

n° 15

Typology

Indoor









Eden Beach Club

Palm Island - Dubai

An escape from the city within the city. A place to switch off. A destination to take you away from the rush. This is the EDEN Beach Club, located on the famous Palm Island in Dubai, one of the most exclusive strip of land in the world.

Beautifully designed to reflect the architectural spirit of the Mediterranean, EDEN Beach Club combines an inspirational space with a compelling vibe that completely disconnect guests from the outside world; it is truly the definition of laid-back luxury, offering guests a combination of relaxation, recreation, and entertainment.

During the day guests can take in the comfort of the poolside dotted with sun loungers and private cabanas, the serenity of the beach with its private bungalows and the indulgence of the restaurant, the bar and the beach bar.

But the experience doesn't end with the sunset. As the sun makes its way to the horizon and as the moon takes its place, EDEN Beach Club transitions into evenings that lose themselves in the upbeat tunes of the resident DJ, unique and exciting dinner shows and cocktails perfected by their talented mixologists.

To create such a Paradise the Eden crew could rely on an LLLs sonic solution skillfully developed by our friends from 21dB, a system comprising terracotta Spheres_360 directly on the beach, Tall Cylinders in travertine in the bungalows and around the pool and suspended Snail modules to add a vertical dimension to the immersive sound space.





MODULES



3 x Snail
25, 26, 27



14 x Sphere 360
11, 12, 13, 14, 15, 16, 17, 18,
19, 20, 21, 22, 23, 24



10 x Cylinder
1, 2, 3, 4, 5, 6, 7, 8, 9, 10

SPECIFICATIONS

Project

Eden Beach Club

Location

Palm Island, Dubai, UAE

Area

2350 mq

Modules

n° 27

Typology

Outdoor









Spazio A

Italy

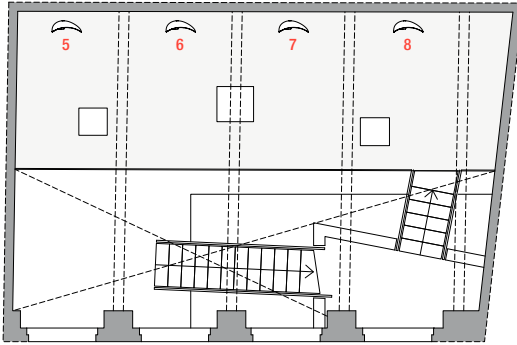
Spazio_A, design by Archea, strives to be a place of dialogue where different disciplines, cultural worlds and arts can meet, embracing architecture, design, photography, film, literature and the full gamut of artistic and creative forms.

The spatial configuration of the structure defines a highly versatile space ideal to host exhibitions, events, presentations, show cooking, as well as talks, lectures, conferences and other opportunities for dialogue with a curious public interested in the topics and eager to discover an open place of dialogue and cultural learning in the center of Florence.

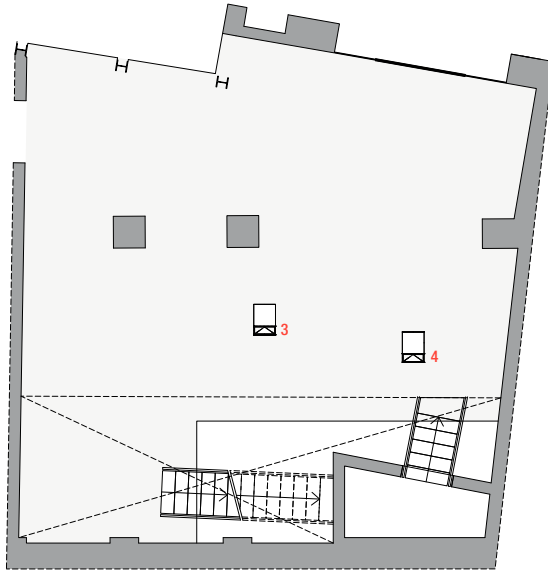
Four large windows open up the space space to the city, letting passers-by have a glimpse of the double-height space and making it permeable, even metaphorically, to the people so that it is perceived as accessible cultural reference. The large windows also establish a relationship with the Arno River, real backbone structuring the city of Florence.

The dynamic spatiality of the gallery is enriched by an LLL's audio system and control, characterizing each area in a different way, and configured to diffuse synchronized sound in the whole space or independently in each of the three levels.

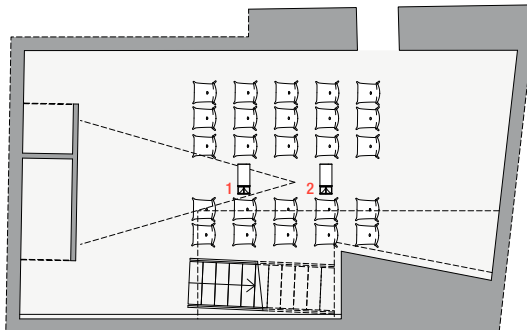
mezzanine



ground floor



basement





MODULES

4 x **Small Helmet**
5, 6, 7, 8



2 x **Cube**
3, 4



2 x **Cylinder**
1, 2

SPECIFICATIONS

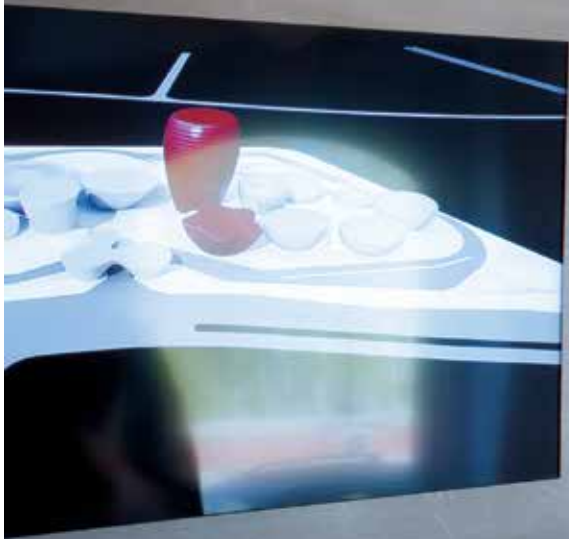
Project
Spazio_A

Location
Firenze, IT

Area
190 mq

Modules
n° 8

Typology
Indoor







Cappellini SOHO

New York

Giulio Cappellini is an architect, art director and widely-recognized taste-maker in international design. Time magazine even hailed him as one of the top 10 trendsetters of our time and as one of the most charismatic leaders in the field of design. Cappellini produces innovative and high quality furnishings that has become synonymous with contemporary, avant-garde design.

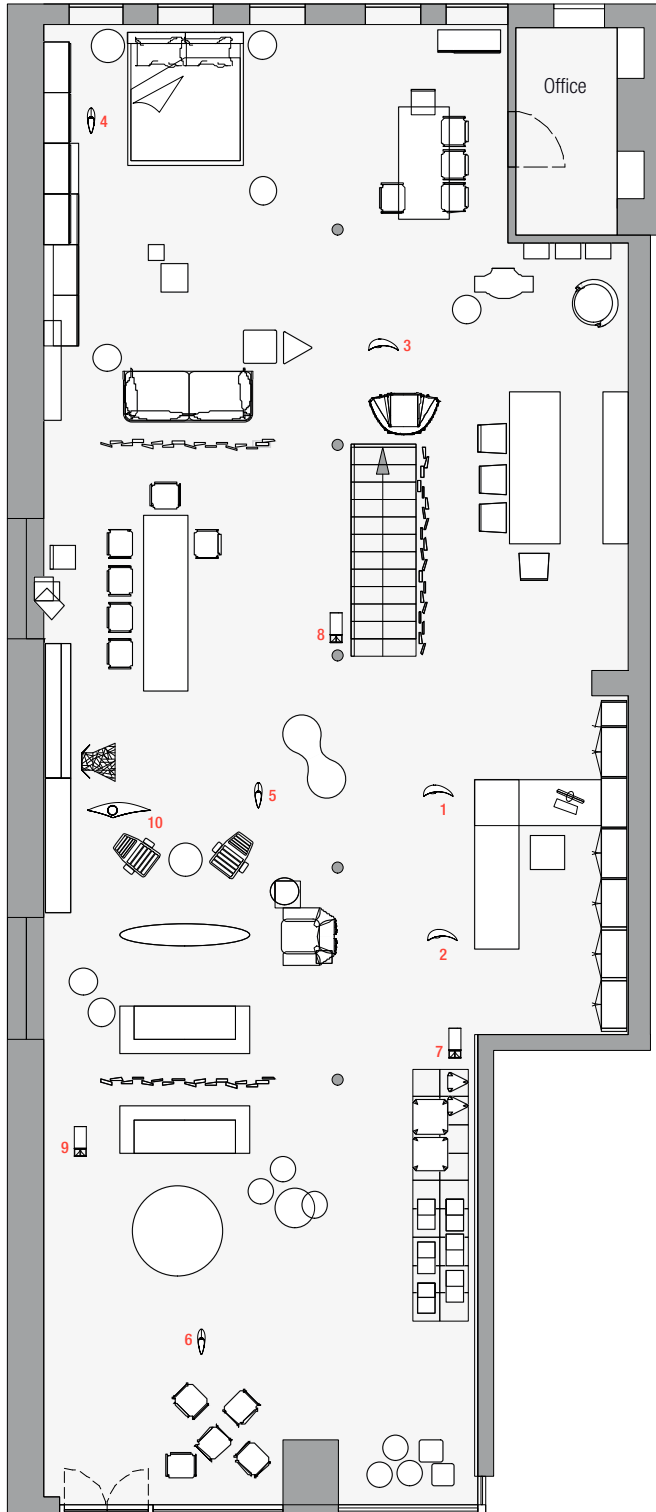
Over the years he has launched some of the world's greatest designers, such as Jasper Morrison, Marcel Wanders, the Bouroullec brothers, Nendo, and Tom Dixon; many of the Cappellini-designed products have become iconic pieces and are exhibited in museums around the world: Victoria & Albert in London, MoMA in New York and the Pompidou Centre in Paris.

Cappellini hates the term "mono-culture", he works very much on the idea of 'contamination', setting end users free to mix products made by different people, created in different periods by different companies from different parts of the world.

In this perspective falls his choice to have an LL's system for their amazing red showroom in the heart of the Soho design district in New York:

Luxury Lifestyle London means innovation, great design, excellent sound quality and freedom to listen to music moving through space. A system of different AS sound modules, suspended and floor-standing, are arranged around the space, in a flexible layout for the changing display needs of a showroom, creating an always different and truly multidimensional sound environment.







MODULES



1 x Shark
10



3 x Small Helmet
1, 2, 3



3 x Small Drop
4, 5, 6



3 x Cylinder
7, 8, 9

SPECIFICATIONS

Project

Cappellini Showroom SOHO

Location

New York, USA

Area

250 mq

Modules

n° 10

Typology

Indoor



LUXURY LIFESTYLE LONDON

 *The Xander Prestige Group*