



Gemstones Quilt

Designed by flaurie & finch

Featuring the Blossom Batiks Geodes collection from RJR Fabrics



Finished quilt measures 50" x 60"

Note: This quilt is a digital representation. Your finished quilt may vary slightly.



Gemstones Quilt Color Card (1 of 2)
Blossom Batik Geodes fabric collection

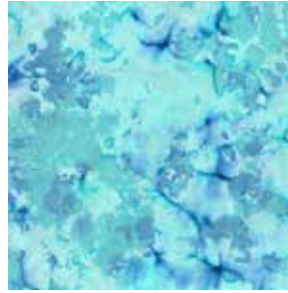
Fabric A
#2930_006



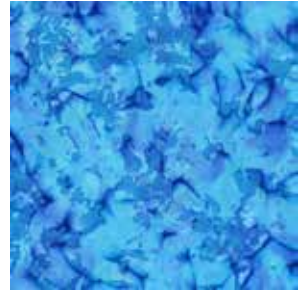
Fabric B
#2930_011



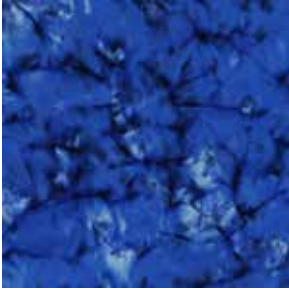
Fabric C
#2930_012



Fabric D
#2930_013



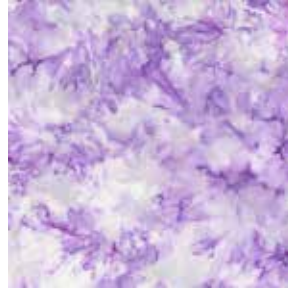
Fabric E
#2930_014



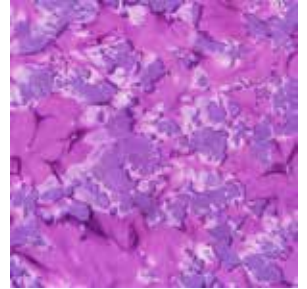
Fabric F
#2930_010



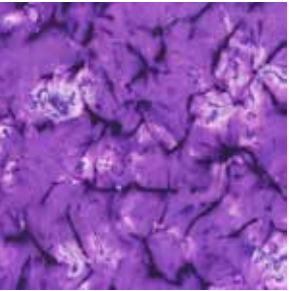
Fabric G
#2930_016



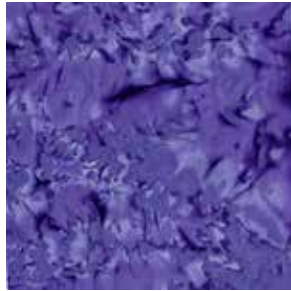
Fabric H
#2930_017



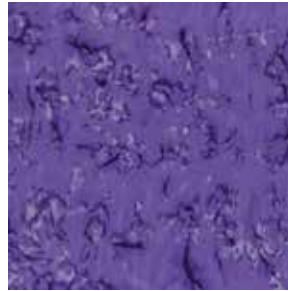
Fabric I
#2891_018



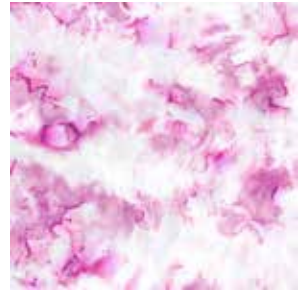
Fabric J
#2930_009



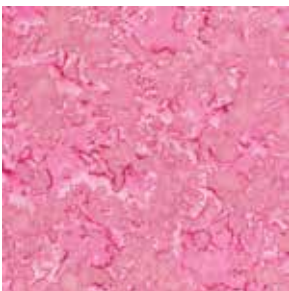
Fabric K
#2930_015



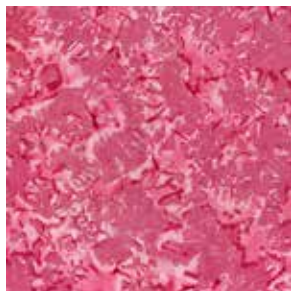
Fabric L
#2930_019



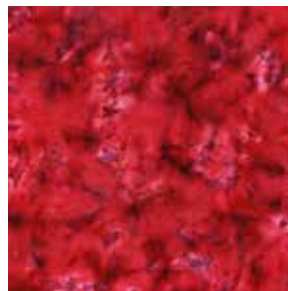
Fabric M
#2930_020



Fabric N
#2930_021



Fabric O
#2930_022

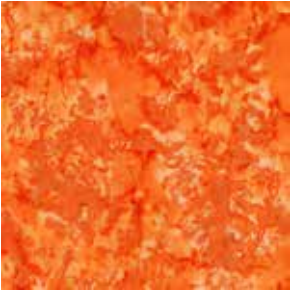


Fabric P
#2930_023



Gemstones Quilt Color Card (2 of 2)
Blossom Batik Geodes fabric collection

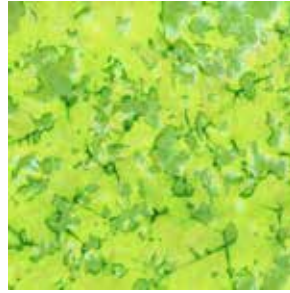
Fabric Q
#2930_024



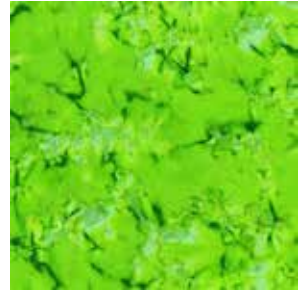
Fabric R
#2930_025



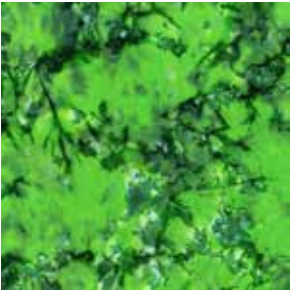
Fabric S
#2930_026



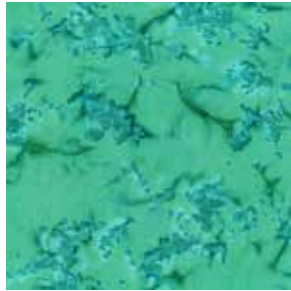
Fabric T
#2930_027



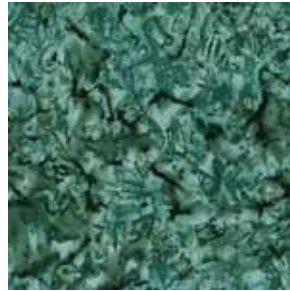
Fabric U
#2930_028



Fabric V
#2930_030



Fabric W
#2930_031



Fabric X
#2891_011



Yardage Requirements

(Blossom Batiks Geode collection)

Fat eighth each:

Fabric C - #2930_012
Fabric D - #2930_013
Fabric F - #2930_010
Fabric G - #2930_016
Fabric H - #2930_017
Fabric I - #2891_018
Fabric J - #2930_009
Fabric K - #2930_015
Fabric L - #2930_019
Fabric M - #2930_020
Fabric N - #2930_021
Fabric O - #2930_022
Fabric P - #2930_023
Fabric Q - #2930_024
Fabric R - #2930_025
Fabric S - #2930_026
Fabric T - #2930_027
Fabric U - #2930_028
Fabric V - #2930_030
Fabric W #2930_031

Fat quarter of Fabric E - #2930_014

1-1/2 yards of Fabric A - #2930_006

7/8 yard of Fabric B - #2930_011

2-1/2 yards of Fabric X - #2891_011, includes binding

4 yards backing fabric

58" x 68" piece of batting

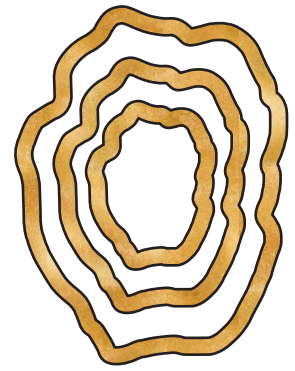
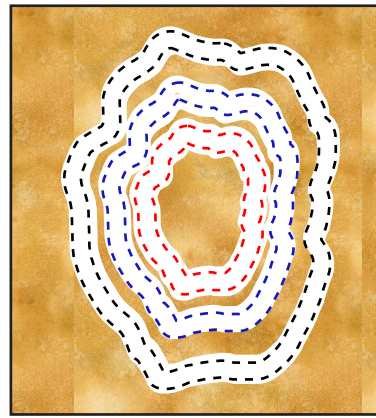
Fusible web

Basic sewing supplies

Preparation and Cutting

Trace three of each solid line template shape onto the paper side of fusible web. Cut out each shape approximately 1/4" past the drawn line. Following manufacturer's directions, fuse onto the appropriate fabric and cut out on the drawn line. Label each piece.

To create the gold outlines for the shapes, use the window applique method to reduce bulk. Trace three of each dotted line template shape onto the paper side of fusible web, keeping the dotted shapes nested as on the template page for efficient use of fabric. Cut out each shape approximately 1/4" on the outside of the outer and on the inside of the inner dotted line to create a hollow shape. Fuse onto the wrong side of Fabric X and cut out on both dotted lines. Label each piece.



From Fabric A, cut:

One 40-1/2" x 50-1/2" piece

From Fabric B, cut:

Five 3-1/2" x 42" strips

One each shape 2L and 2S

From Fabric C, cut:

Four 3-1/2" squares

One each shape 5M and 5S

From Fabric D, cut:

One each shape 2S, 3M, 3S and 4M

From Fabric E, cut:

One each shape 1L, 1M, and 2L

From Fabric F, cut:

One each shape 3S, 4L, and 4S

From Fabric G, cut:

Two shape 1S and one shape 5L

From Fabric H, cut:

One each shape 1M and 2M

From Fabric I, cut:

One each shape 2L and 3M

From Fabric J, cut:

One each shape 1L and 6M

From Fabric K, cut:

One each shape 3S and 6L

From Fabric L, cut:

One each shape 3L and 6M

From Fabric M, cut:

One each shape 1M and 4M

From Fabric N, cut:

One each shape 4S and 6L

Preparation and Cutting continued

From Fabric O, cut:

One each shape 5L, 5M and 6S

From Fabric P, cut:

One each shape 3M and 4L

From Fabric Q, cut:

One each shape 3L and 5S

From Fabric R, cut:

One each shape 2M, 2S and 4S

From Fabric S, cut:

One each shape 4L, 6L and 6S

From Fabric T, cut:

One each shape 5L and 5M

From Fabric U, cut:

One each shape 1L, 4M and 5S

From Fabric V, cut:

One each shape 3L and 6S

From Fabric W, cut:

One each shape 1S, 2M and 6M

From Fabric X, cut:

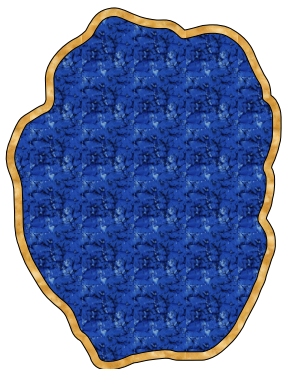
Six 2-1/4" x 42" strips for binding

Eleven 1-1/2" x 42" strips

Three each shape 1S-L, 2S-L, 3S-L, 4S-L, 5S-L, and 6S-L

Assembling the Quilt Top

1. Fuse each shape to its corresponding size and shape Fabric X outline.



2. Referring to the Applique Placement Diagram on p. 5, lay out the shapes as indicated on the 40-1/2" x 50-1/2" Fabric A piece. **Tip:** Use small dots of fabric glue or basting spray to temporarily adhere shapes in place as you build the quilt.

3. When you're satisfied with the layout, fuse the

shapes in place. Trim the quilt top to remove pieces of the shapes that hang off of the background. Stitch around each shape with a decorative stitch to secure.

4. Refer to the Quilt Assembly Diagram on p. 6 as you add the borders. Sew the eleven 1-1/2" x 42" Fabric X strips short ends together into one long strip. Cut two 58-1/2", four 50-1/2", and two 42-1/2" lengths. Sew 1-1/2" x 50-1/2" Fabric X strips to the sides of the quilt top. Sew 1-1/2" x 42-1/2" Fabric X strips to the top and bottom.

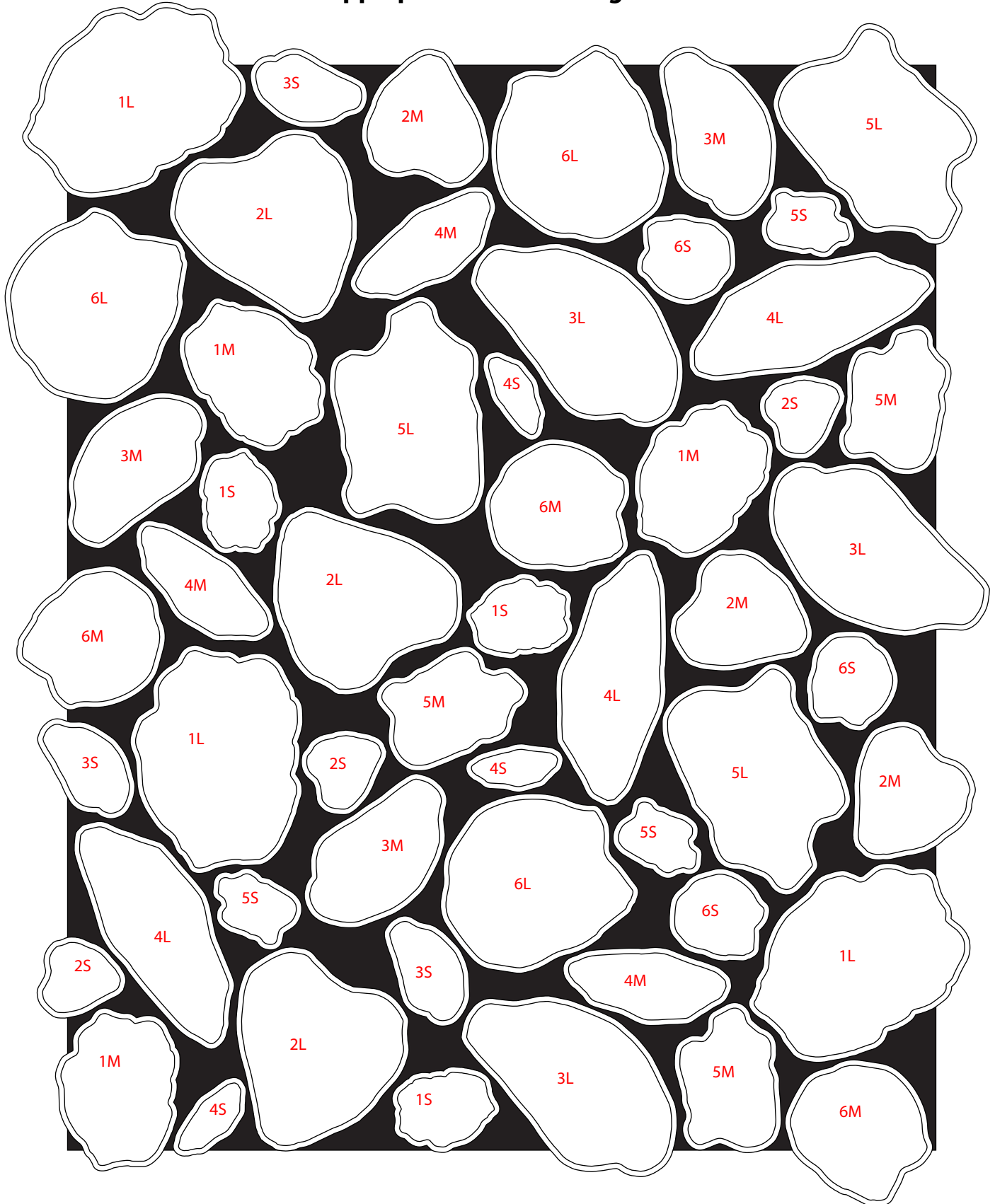
5. In the same manner, sew five 3-1/2" x 42" Fabric B strips short ends together into one long strip. Cut two 52-1/2" lengths and two 42-1/2" lengths. Sew 3-1/2" x 52-1/2" Fabric B strips to the sides of the quilt top. Sew 3-1/2" Fabric C squares to opposite ends of the 3-1/2" x 42-1/2" Fabric B strips. Sew these pieced borders to the top and bottom of the quilt.

6. Sew 1-1/2" x 58-1/2" Fabric X strips to the sides of the quilt top. Sew 1-1/2" x 50-1/2" Fabric X strips to the top and bottom of the quilt.

Finishing

Lay the backing right side down, batting, and quilt top right side up. Baste the layers together and quilt as desired. Use the six 2-1/4" x 42" Fabric X strips to bind the quilt.

Applique Placement Diagram

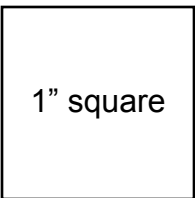
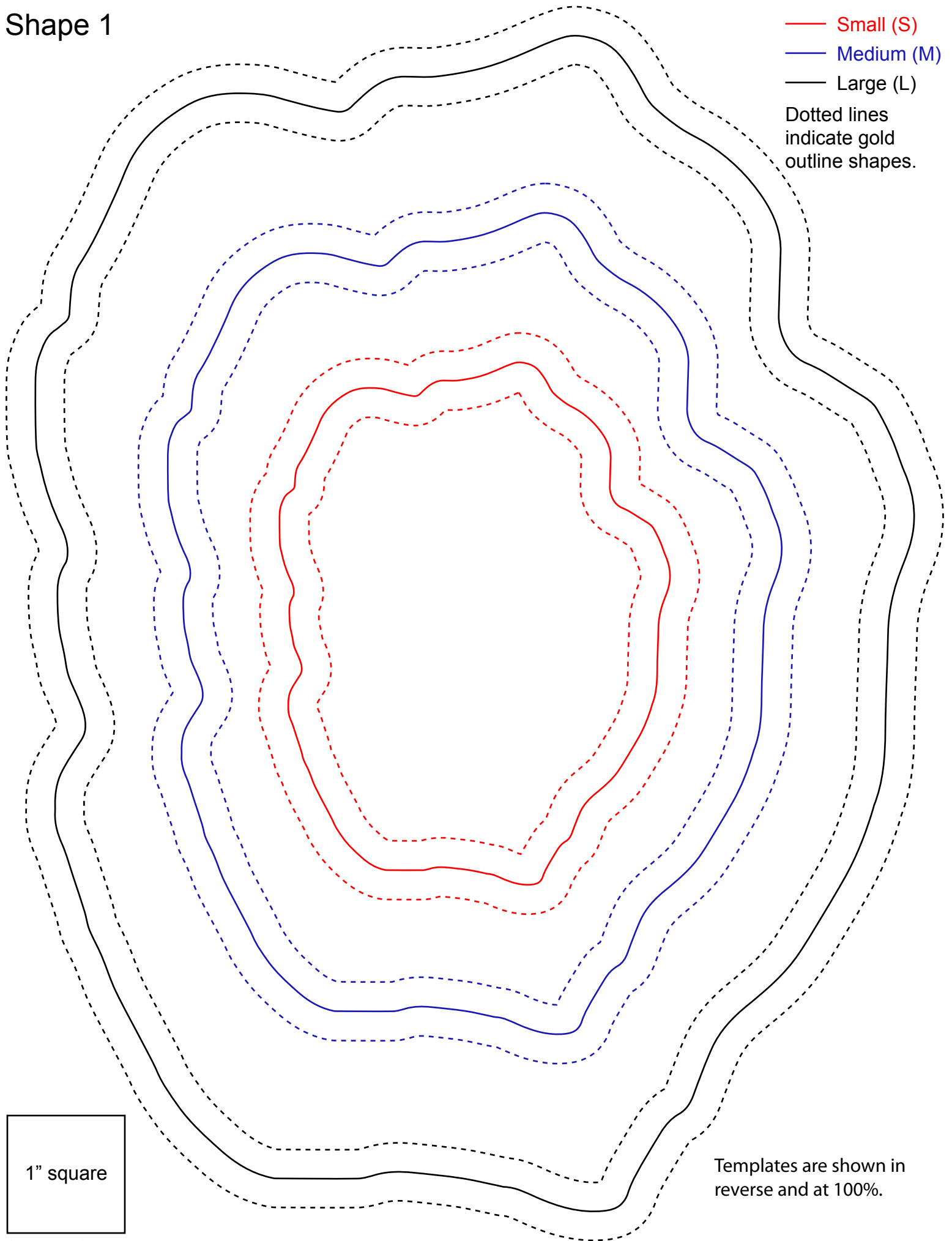


Quilt Layout Diagram



Shape 1

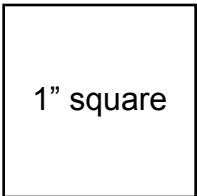
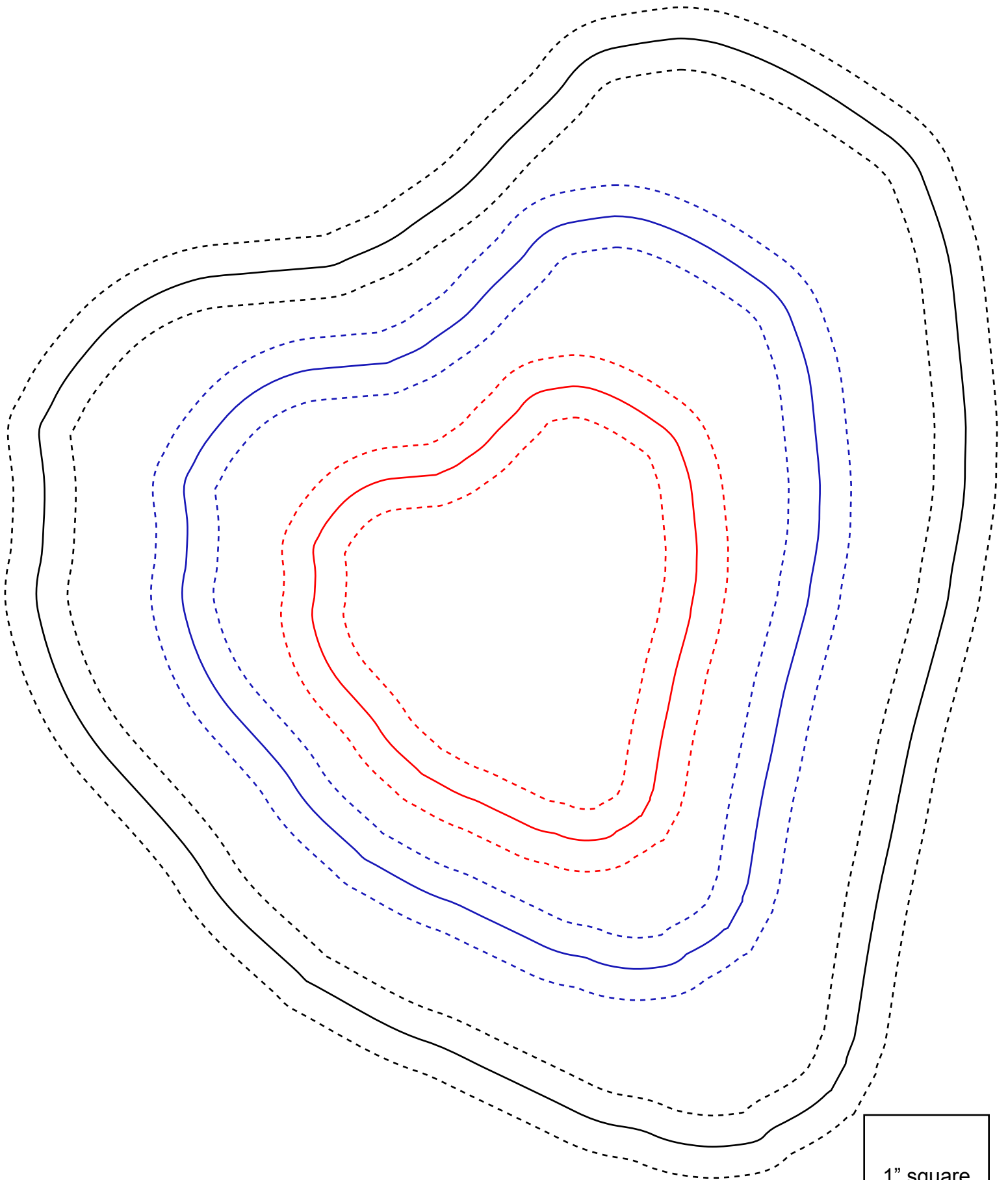
- Small (S)
 - Medium (M)
 - Large (L)
- Dotted lines indicate gold outline shapes.



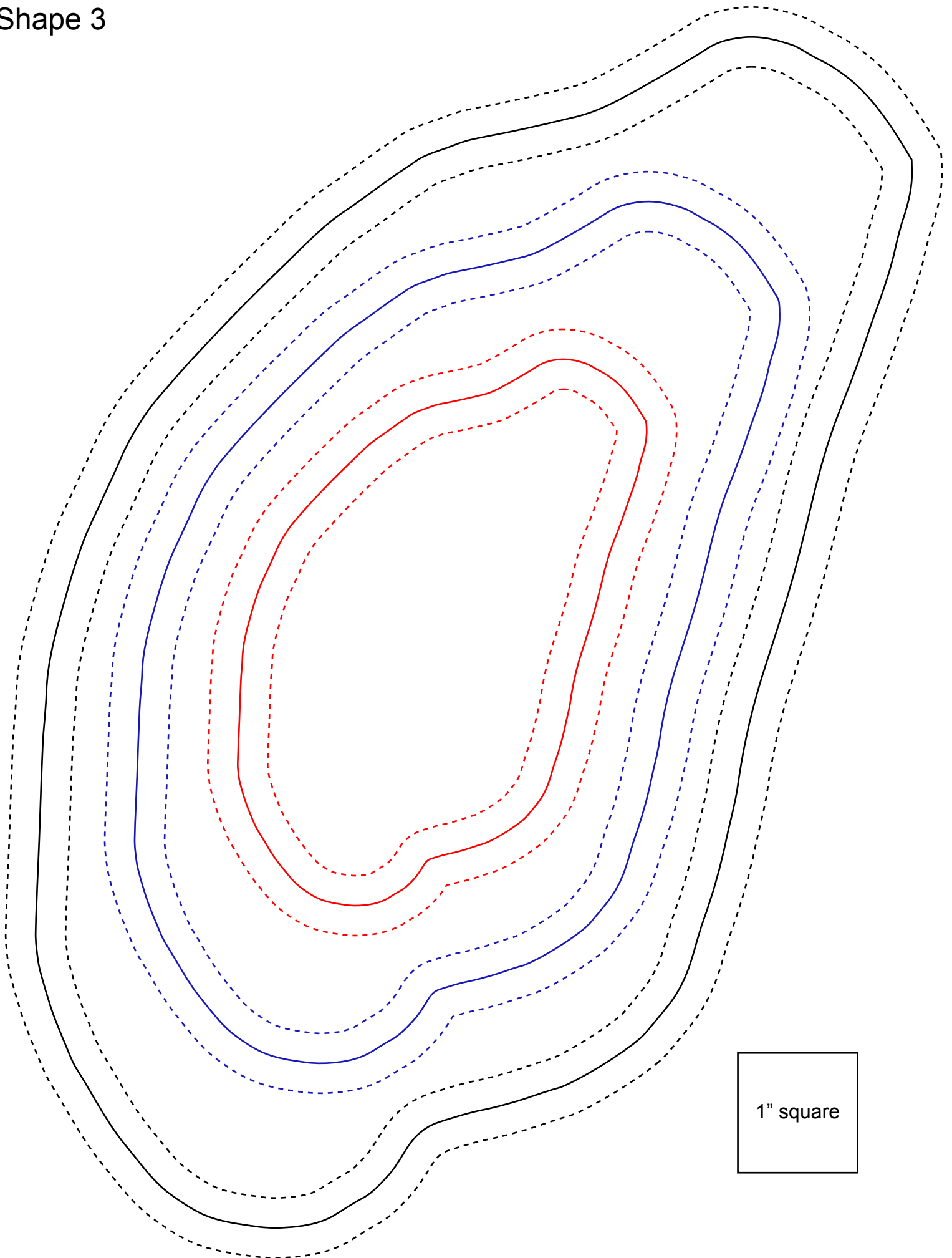
1" square

Templates are shown in reverse and at 100%.

Shape 2

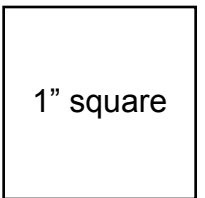
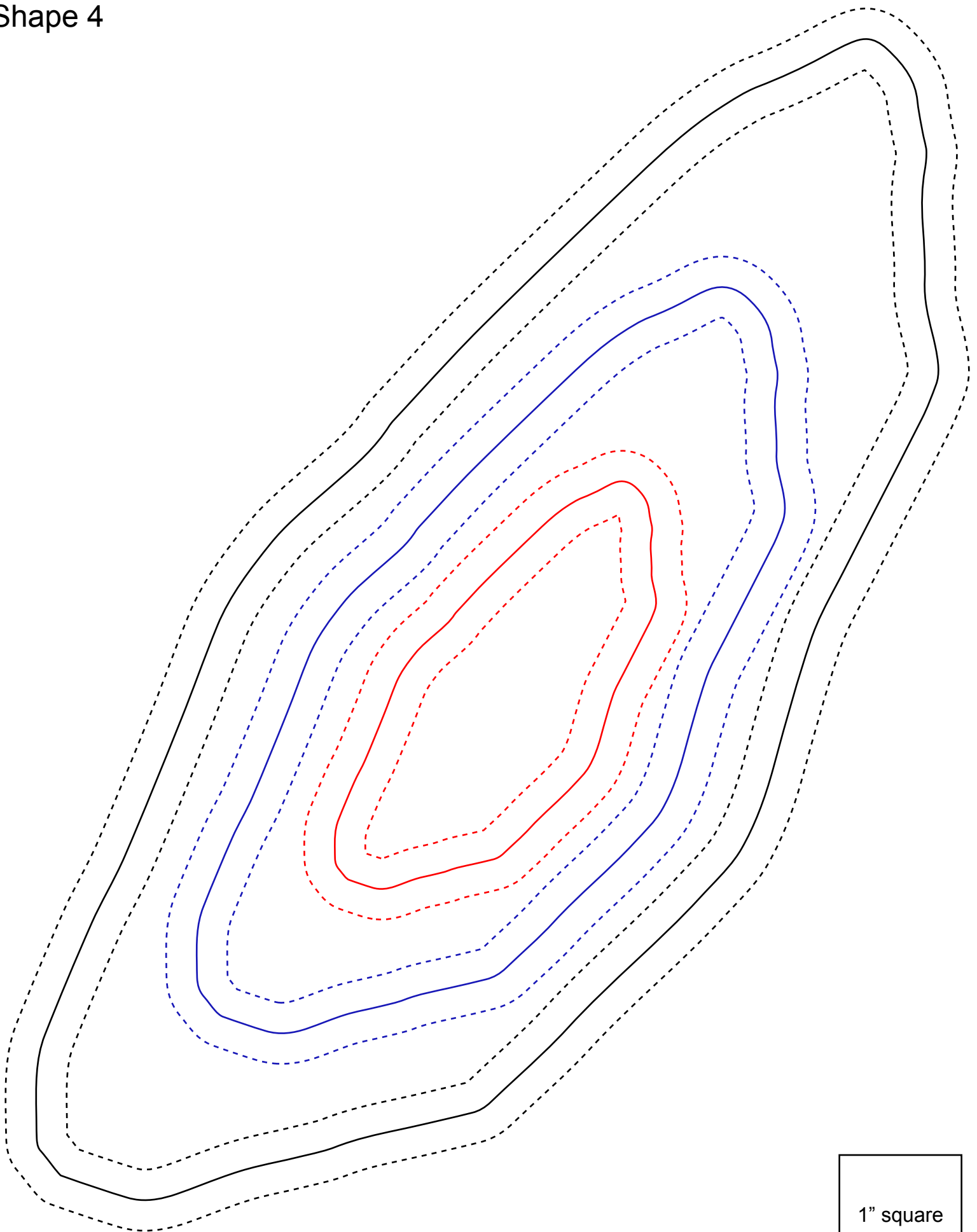


Shape 3

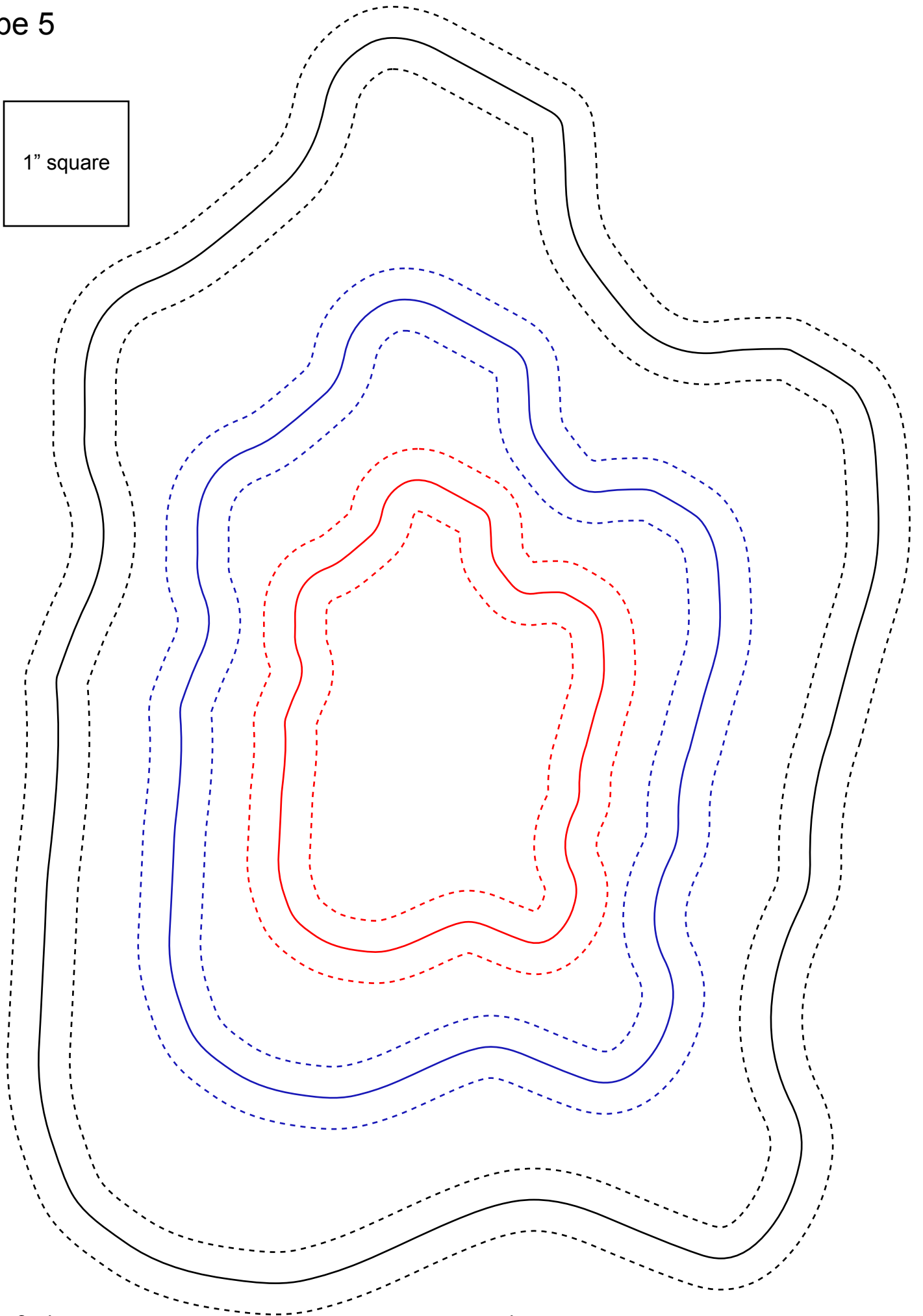
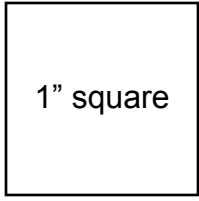


1" square

Shape 4



Shape 5



Shape 6

