

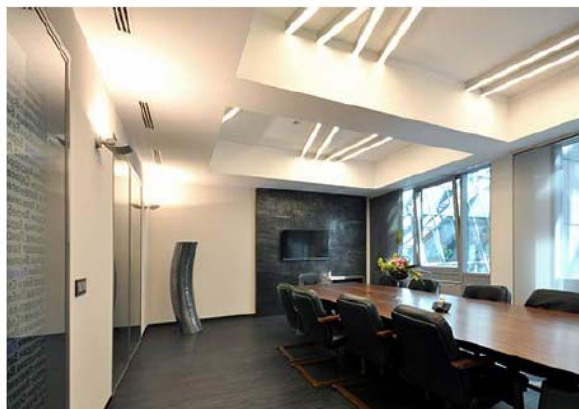
LED Light Tech™ Line Voltage T5 LED Tube

2, 3 and 4 foot LED Line Voltage replacement for T5 luminaries. Easy to install, Simple ballast bypass!



SPECIFICATIONS:

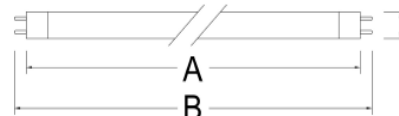
- Wattage:
 - 2 foot is 8 Watts
 - 3 foot is 12 Watts
 - 4 foot is 14 Watts
- Input Voltage: 110-277VAC
- Base: T5 Miniature Bipin
- Reliability Life: 40,000 hours
- Lumen Efficacy: 90Lm/W (4000 and 5500K)
- Color Temperature: 3000K, 4000K and 5000K
- CRI>80
- 5 year warranty
- Environmental friendly, RoHS compliant, no heavy metals/poisonous gases, no UV, no IR and no noise



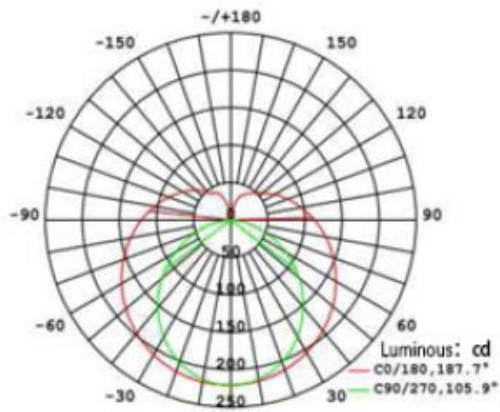
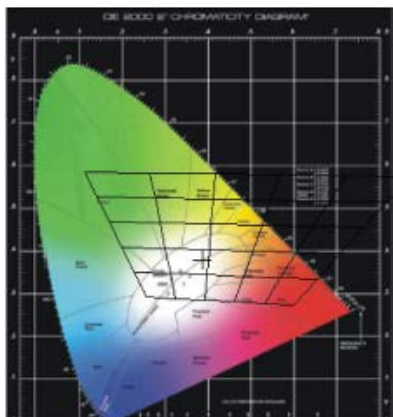
•Product Dimensions

Base Face to Base Face	A	589mm
Overall Length	B	602mm
Diameter	C	26mm

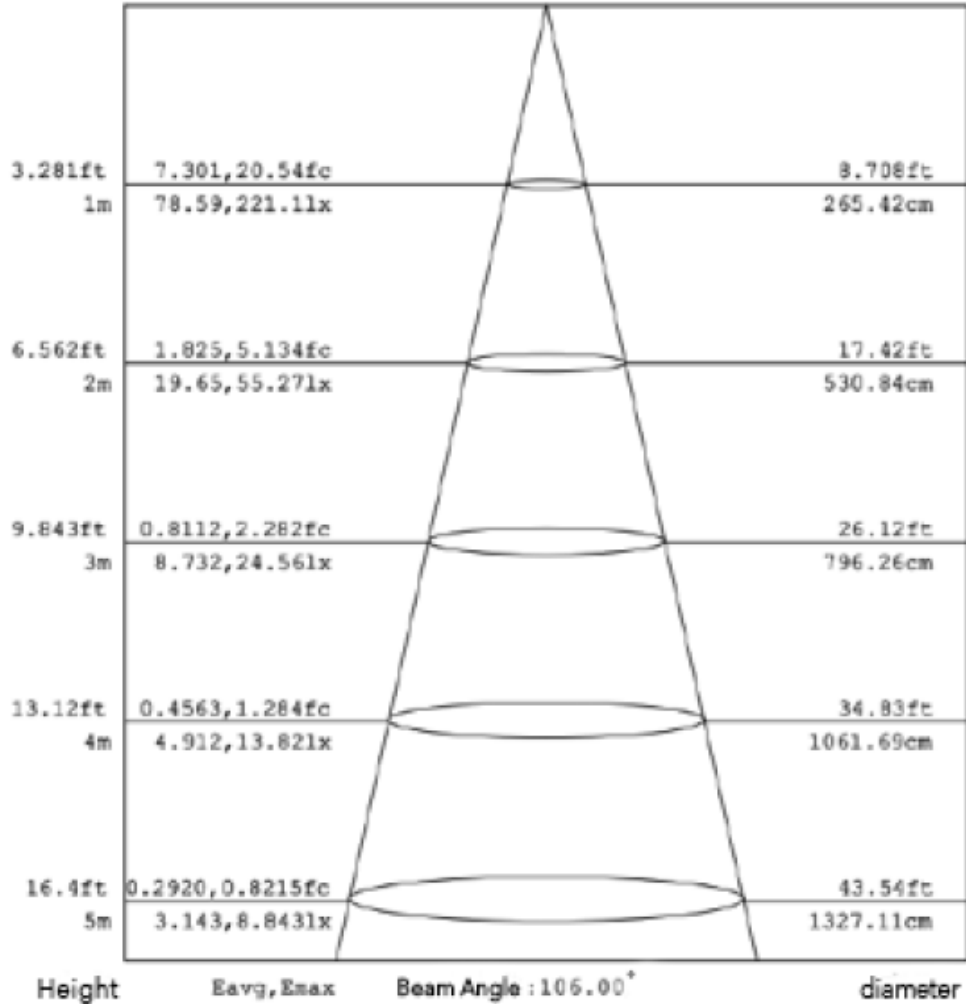
1198 mm
1212 mm
26mm



LI



16



PRODUCT ORDER CODE:

Product Order Code Example: LLT-41-LVT52-9-4-F

LLT	41	LVT5				
			Length	Watts	CCT	Diffuser
			2	8	3=3000	F=Frosted
			3	12	4=4000	C=Clear
			4	14	5=5500	

