

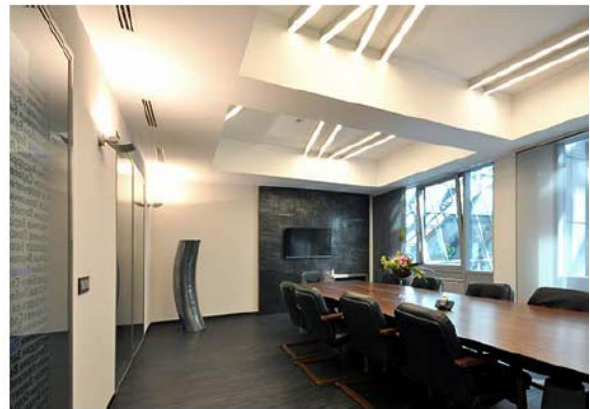
# LED Light Tech™ Plug and Play T5 LED Tube

2, 3 and 4 foot LED Plug 'n Play replacement for electronic ballast T5 luminaries. Easy to install, no wiring changes!

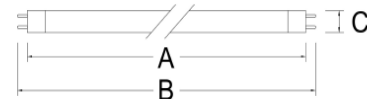


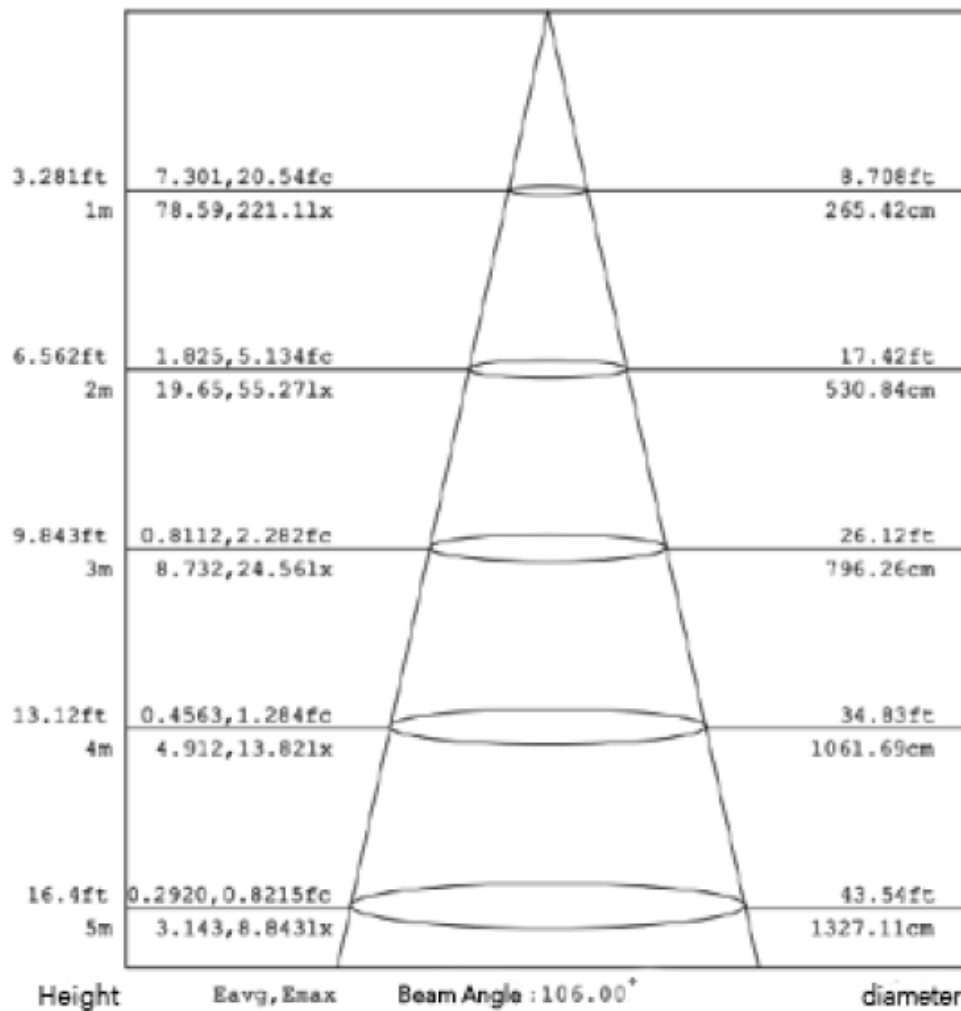
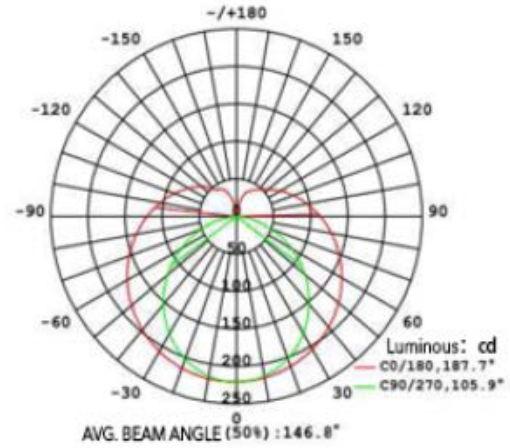
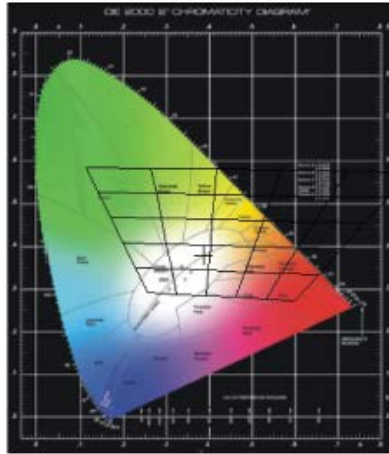
**SPECIFICATIONS:**

- Watts:
  - 2 foot is 8 Watt
  - 3 foot is 12 Watts
  - 4 foot is 14 Watts
- Input Voltage: Tubes are compatible with electronic ballast
- Base: T5 Miniature Bipin
- Reliability Life: 40,000 hours
- Available in 2 or 4 foot lengths
- Lumen Efficacy: 90Lm/W (4000 and 5500K)
- Color Temperature: 3000K, 4000K and 5000K are available
- CRI>80
- High quality Epistar LEDs
- Certificates/Ratings
  - RoHS compliant
- 5 year warranty
- Environmental friendly, no heavy metals/poisonous gases, no UV, no IR and no noise



•Product Dimensions			
Base Face to Base Face	A	589mm	1198 mm
Overall Length	B	602mm	1212 mm
Diameter	C	26mm	26mm





**PRODUCT ORDER CODE:**

Product Order Code Example: LLT-41-T52-P&P-8-120-E-4-F

LLT	41	T5		P&P					
			Length		Watts	Ballast Voltage	Ballast Type	CCT	Diffuser
			2		8	120=120V	I=Inductive	3=3000	F=Frosted
			4		14	277=277V	E=Electronic	4=4000	C=Clear
							A=Electronic bi-volt	5=5500	

