

Training and placement cell is an integral part of the institute. The institute has provided complete infrastructure for effective functioning of the cell. Training activities are organized throughout the year in an effort towards preparing the prospective students for the campus selection programmes. The cell keeps on inviting various hospitality sectors for campus recruitment. It modules the hotel management grades to young corporals. The cell is sensitized to function all through the year towards generating placement and training opportunities for the students.

Placement Cell

The Placement Cell at SHM provides a set of services focused at assisting students in their career planning process such as:

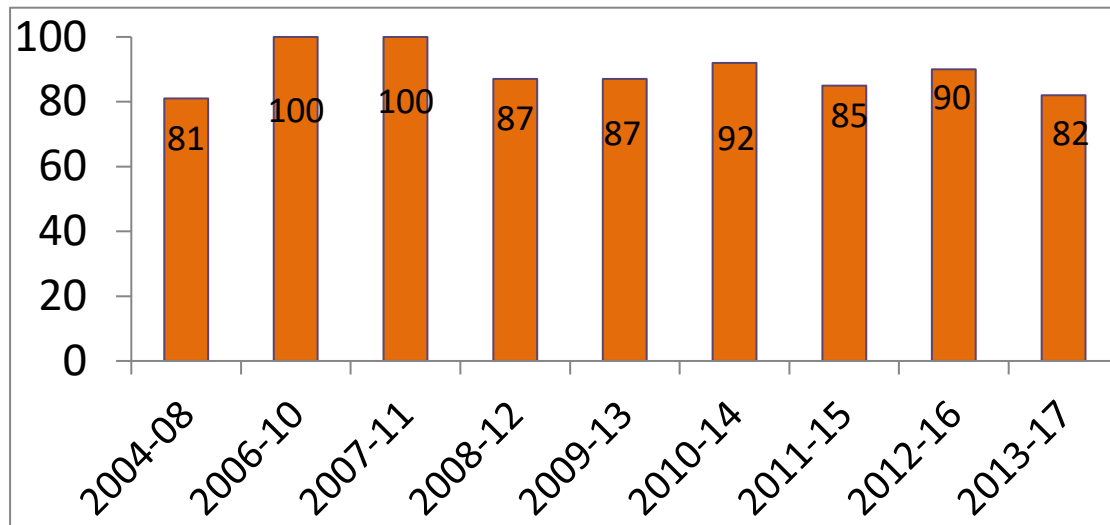
- ❖ Career Counseling
- ❖ Researching the organizations
- ❖ Mock GD & PI
- ❖ Full Dress Rehearsal

Goal: To provide assistance and guidance to students for making their career and placement opportunities.

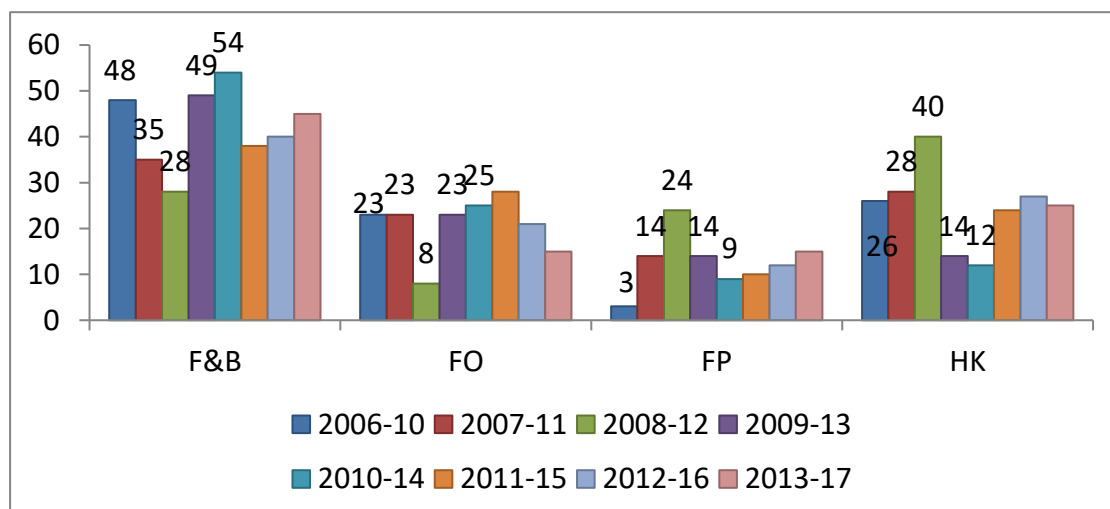
Objectives:

- To help students make appropriate and realistic career choices and career direction
- To help students prepare for interview and develop their communication skills
- To organize various activities like outdoor catering, training etc.

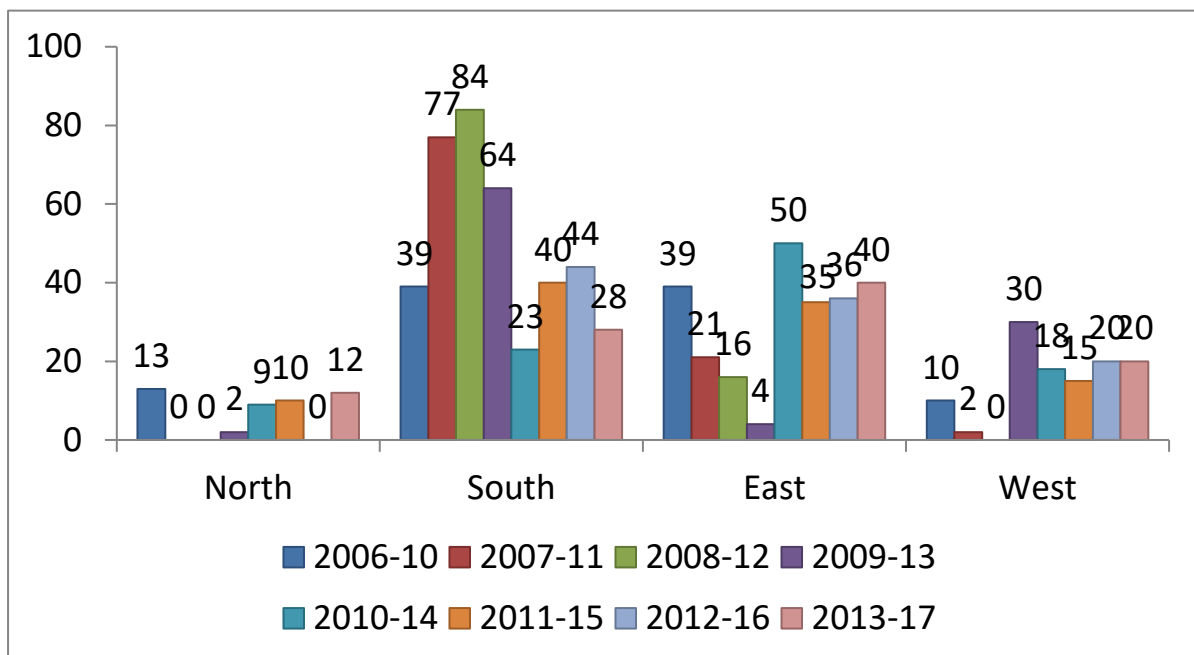
Placement Records year wise Comparative Analysis



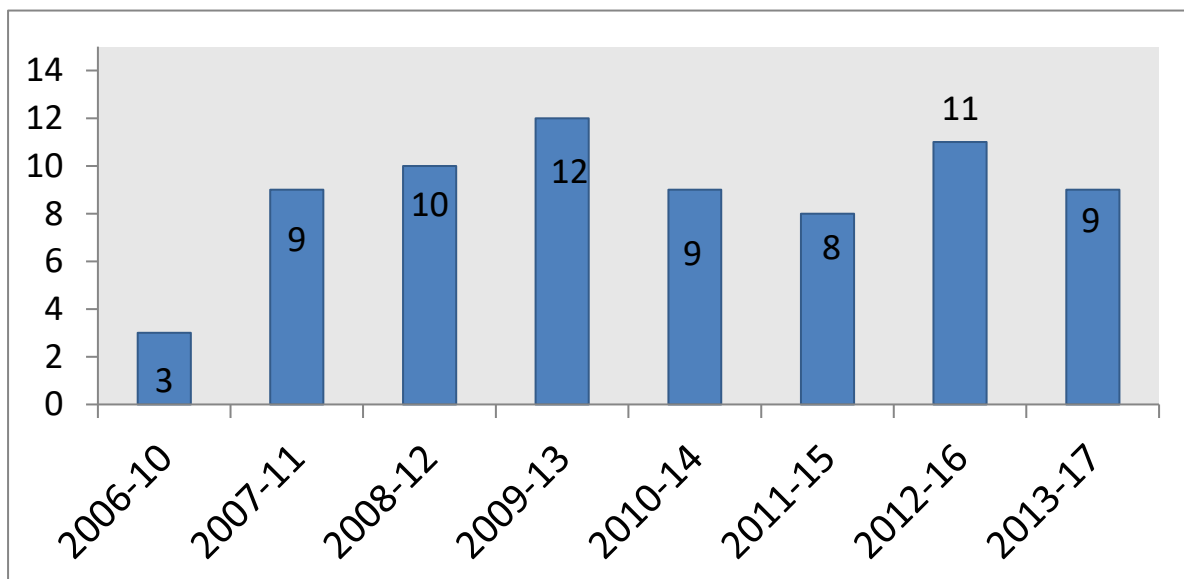
Placement Records Department wise Comparative Analysis



Placement Records Region wise Comparative Analysis



No. of Companies visiting the Campus



Abroad Internship - 2017



Various Hospitality Companies visited for Campus Recruitment



