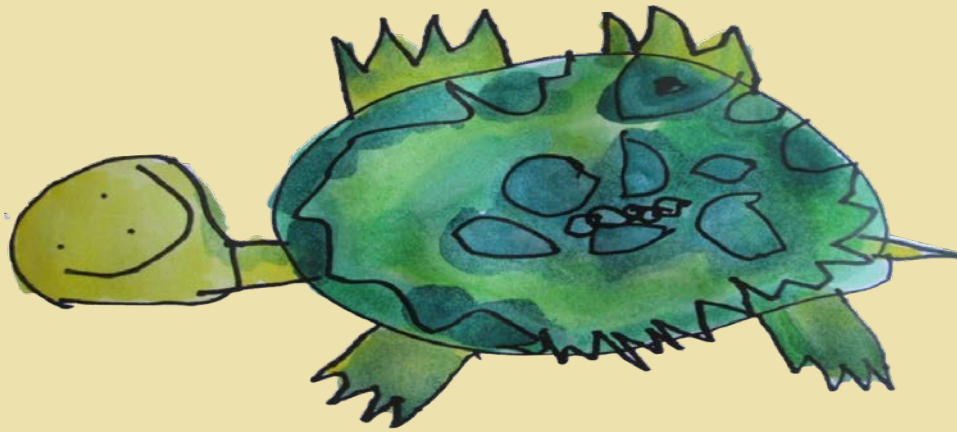


---

# PINNACLE PRESBYTERIAN PRESCHOOL



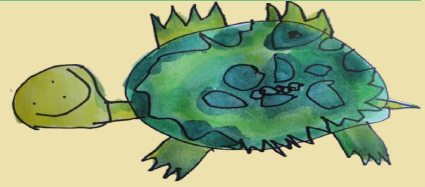
A PATH FOR OUR RETURN TO PINNACLE  
2020-2021

---

---

# INTRODUCTION

---



Pinnacle Families,

We cannot wait until our hearts return to Pinnacle! We are committed with plans to open the campus for students in September 2020 - our 25th year of preschool. While we are eager to return, we are just as determined to make wise decisions based on information from the science and medical fields. Over the past few months, a Pandemic Task Force of educators, medical personnel, parents and Pinnacle Church staff has met to review these recommendations from the various resources.

Recognizing that the highest priority is the health and well-being of our community, this fluid document is a road map of plans based on information we currently have:

- COVID-19 response return phases
- Establishing and ensuring rigorous health and safety precautions
- Focusing on child's learning environment and well-being
- Focusing on educating faculty with pertinent professional development
- Evaluating financial and operational implications

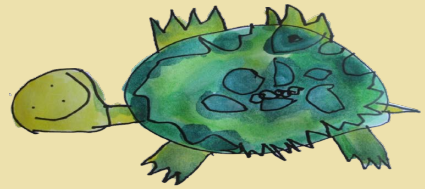
We will begin school in September with more aggressive guidelines as outlined in Phase Two. There is not a complete solution to everything at this time, as each day we obtain and evaluate new information and are still solving some areas. We will provide updates as needed.

Yes, we have plans to prioritize health and safety, however, all of us have to take personal responsibility to follow the new health guidelines for the well-being of our community. It is imperative that each one of us takes this with the utmost responsibility.

Thank you for your willingness to partner with us on this journey. We know that each family is unique, and we remain committed to listening and working together to make the 2020-2021 school year a success.

Sabrina Ball  
[sball@pinnaclepres.org](mailto:sball@pinnaclepres.org)  
480-585-9448

# RETURN PLAN



The Preschool is looking at a host of new precautionary measures to mitigate the spread of COVID-19. The reopening plan is guided by research from the science and medical fields along with government recommendations.

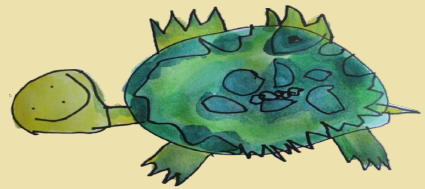
We are creating an environment with new operating procedures, policies, training and standards of hygiene.

When we return, our families and staff can continue the trust that they have always had with Pinnacle.

Plans and procedures will continue to be refined and evaluated.



# RETURN PLAN



## PHASE ONE

- Mandated shelter in place
- Virtual Learning via Zoom by Classroom Teachers
- Professional Development for staff

## PHASE TWO

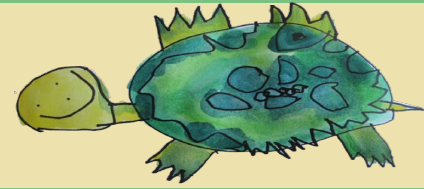
- Staggered arrival/departure
- Staggered calendar for the first days of school
- Temperature checks before entering the Preschool
- Children bring their own snack/lunch
- No outside visitors - families, prospective parents, teachers' children
- Playground and outdoor classroom utilized for social distancing
- Consistent grouping of children - children stay with their classmates during the regular school day
- Extended day offered with a small, consistent group; no drop-in options
- Ongoing cleaning and sanitizing of spaces and materials
- Restrictions on the size of group in classrooms, walkways, restrooms, playground, and outdoor classroom (Social distancing by classroom; not by an individual)
- Adults wear face masks
- Increased professional development for staff on health, safety and well-being



AT THIS TIME, WE PLAN TO BEGIN THE SCHOOL YEAR IN PHASE TWO.



# RETURN PLAN



## PHASE THREE

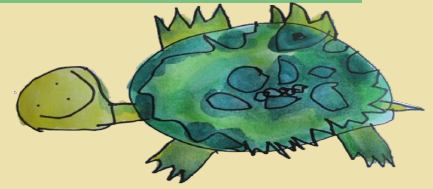
- Begin small gatherings
- Little Lambs Chapel with limited classes
- Small groups of adult volunteers in classrooms
- Class “parties”
- Children bring their own food
- Evaluate face mask procedures for adults
- Auxiliary spaces open
- Increased professional development for staff on health, safety, and well-being

## PHASE FOUR

- Full Little Lambs Chapel resumes
- Typical playground and outdoor classroom schedules resume
- Freely moving volunteers
- No daily health check-ins for staff/children/families

WE WILL BE INFORMED BY CDC,  
FEDERAL, STATE AND LOCAL  
GUIDELINES WHEN MOVING FROM  
ONE PHASE TO ANOTHER.

# HEALTH AND SAFETY



## OBJECTIVE

The strength of the mission, vision, and innovative approach to learning of the Preschool is the relationship between children and teachers, learning and playing in school together. Like you, we are eager to return in, but we have to be diligent in our approach to ensure health and safety.

As a community, we all play a role in keeping children and families safe, and we are counting on everyone to contribute by ensuring health and safety guidelines are met.

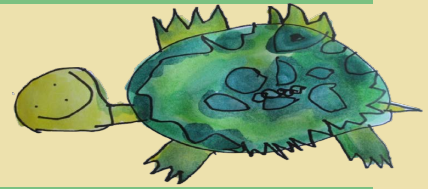
There are six key areas the Preschool is evaluating as we open the new school year:

## 1. PROMOTING DAILY HYGIENE

- Hygiene practices (coughing/sneezing etiquette, hand washing, wiping down tables, chairs, and equipment) will be promoted consistently
- All will be required to use sanitizing stations by the Preschool
- Staff will teach and support hand washing strategies including washing with soap and water for at least 20 seconds, especially after going to the restroom; before eating; and after blowing the nose, coughing, or sneezing
- Ongoing sanitizing of spaces and materials
- Adults wear face masks at all times
- All food will be brought from home



# HEALTH AND SAFETY



## 2. MONITORING ILLNESS

- Daily temperature and symptom checks for staff and children prior to entry into the building
- Any child or staff member with a temperature of 100.4 or higher will be sent home
- Adhere to CDC guidelines if child, staff, or family member tests positive for the virus
- Isolate sick individuals
- Any individual exposed to the virus must remain home; parents/guardians will promptly notify the Preschool and share medical advice of family physician

## 3. EVALUATING RESTRICTIONS

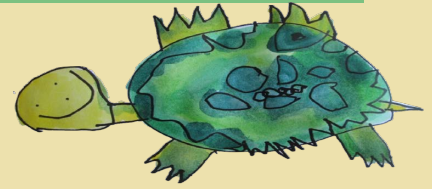
- Protocols for face masks
- Protocols for families, substitute teachers, and visitors in the Preschool
- Protocols for group gatherings
- Protocols for shared spaces

## 4. PROMOTING WELL-BEING

- Social, emotional, and spiritual health is a priority
- Teachers are prepared to support children and families as we return
- Creation of digital social stories to support children and families entering into new experiences such as teachers wearing masks and washing hands
- Little Lambs Chapel remains grounded in the values of love, joy, peace, patience, kindness, goodness, faith, gentleness, and self-control



# HEALTH AND SAFETY



## 5. MONITORING FACILITIES AND SUPPLIES

- Clean, sanitize, and disinfect frequently touched surfaces multiple times a day
- Verify and affirm that all ventilation systems continue to operate properly
- Ensure the safe and correct application of disinfectants and keep products away from children
- Maintain a minimum reserve of a recommended 30-day supply of soap, disinfectant spray, hand sanitizer, masks and paper products
- Evaluate the seating at tables to gain more distance between children

## 6. PROFESSIONAL DEVELOPMENT

- Mandatory first aid, CPR, and COVID-19 specific training for all staff
- Increased offerings focused on the social-emotional ramifications of distance learning, COVID-19, and current life changes
- Expanded offerings in collaborative settings focused on the Reggio Emilia Approach- implications from virtual learning

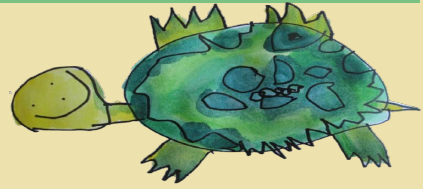




---

# OPERATIONS

---



The impact of COVID-19 is significant in many facets of our lives — and the long-term financial ramifications have yet to be fully realized. The administration continues to take a prudent and mission-driven approach to navigate the operational aspects of the school. The greatest resource is the faculty and the vast majority of the budget supports this through salaries and professional learning. The Preschool has remained stable through careful cost and cash management strategies for operational financial stability.

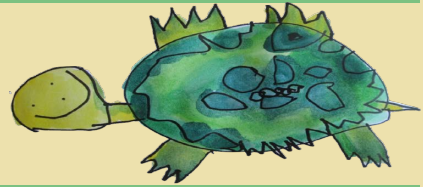
The Preschool will continue to keep our students actively engaged in the event we are closed because of a mandated shelter in place or similar events that may require distance learning. In order to sustain the quality of education you've come to expect, we must continue to support our faculty, cover all of our other expenses and invest in innovative ways to deliver the curriculum to the children. The school has invested in additional operating expenses associated with adopting and implementing online learning tools that are robust. The Preschool Board of Directors met on August 18 and voted on the following:

*Pinnacle Presbyterian Preschool is committed to providing an early childhood program of the highest quality but like all non-profit organizations the vast majority of the budget is the investment in faculty and staff. For the 2020-2021 school year, we have made significant cuts to non-essential operating costs and significant investments in PPE and other health and safety measures. Due to these factors and in order to retain the faculty, the Preschool does not anticipate being able to offer a tuition refund should distance learning be mandated by the State of Arizona or similar events that may require distance learning. .*

---

# DISTANCE LEARNING

---



If a mandated shelter-in-place order goes into effect during the school year (Phase One), we are determined to meet and go beyond expectations based on recent experience, feedback, and research. The inspiration gained from the continued study of the Reggio Approach is that we remain dedicated to designing learning experiences worthy of your children and to grow professionally in innovative approaches to learning with young children.



CONNECTING AND ENGAGING  
WITH  
CHILDREN AND  
FAMILIES IS OUR TOP  
PRIORITY.



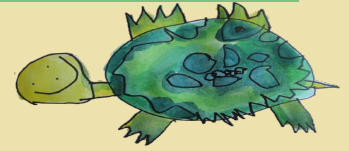
While the needs and experiences of children and families are varied, we are in the process of analyzing and designing an improved off-campus learning experience that focuses on supporting connections between classmates, deeper relationships with children and families, and an increased social/emotional focus for families. In addition, we are looking at appropriate platforms and screen time, learning experiences content, and pacing of experiences across the age levels.

We recognize that ongoing communication with families is imperative, especially when we are mandated to stay apart; therefore, we will do our best to deliver clear, concise, and detailed communication throughout a shelter-in-place order.

---

# FREQUENTLY ASKED QUESTIONS

---



Although many elements of the Preschool year will be consistent with other years, we know that parents will have lots of questions. We will be holding Zoom meetings for parents and caregivers to discuss our health and safety guidelines with each set of classroom teachers and parents.

***As information develops and changes regarding COVID-19, some of these answers may also change. We will update if / when that happens.***

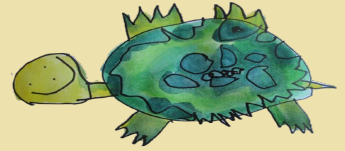
What is the Preschool's approach to cleaning and sanitizing?

Every morning before Preschool and after Preschool, sanitizing products will be used on all tabletops, chairs, surfaces, counters, and doorknobs. Children have individual cubbies in classrooms, and these will also be sanitized every day. Surface cleaning of materials such as blocks, books, puzzles and washing of soft items such as stuffed animals and pillows will happen throughout the day.

---

# FREQUENTLY ASKED QUESTIONS

---



Where and how will temperatures be taken?

Temperature check-in stations will be located at the Preschool entry gates and other entry points to be determined. We are also asking parents to take child's temperature at home prior to arriving to school.

In what phase does temperature taking stop?

The Preschool will implement appropriate policies, in accordance with federal, state, and local regulations and guidance, and informed by CDC guidelines regarding temperature taking. We anticipate temperature checks to halt in Phase Four.

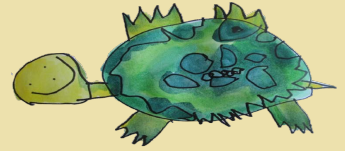
How often will children be washing hands?

Children and adults will be required to sanitize hands with hand sanitizer before entering the classroom. Children will wash hands before and after eating, after toileting, and of course after any messy activity. We are in the process of creating social stories to support children and families in the increased focus on good hand washing hygiene.

---

# FREQUENTLY ASKED QUESTIONS

---



My child has allergies. With everyone bringing their own snack, how can I be confident that my child won't be exposed to something they are allergic to?

The Preschool will continue to adhere to food restrictions in classrooms where a child has a food allergy. Teachers will communicate the food restrictions prior to the start of school. Pinnacle will remain a peanut and tree nut free school.

Can I walk my child into the building for arrival and departure?

Parents and caregivers will be asked to wear a face mask while dropping their child off at the Preschool gate. Teachers will escort children to the individual classrooms during Phase 2. Parents and caregivers will also pickup children at dismissal at the front gate.

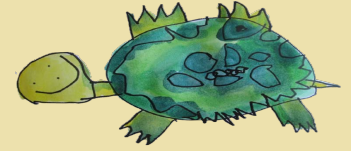
Will children be allowed to wear masks?

The Preschool is not requiring children to wear face masks at school as children frequently touch their face when wearing masks, increasing the possibility of germ spread. However, families may elect for their child to wear a mask.

---

# FREQUENTLY ASKED QUESTIONS

---



Will there be Extended Day in the 2020-2021  
Preschool year?

Yes. In order to keep groups small and consistent, prior registration is required. During Phase Two, Extended Day will be in individual classrooms with their teachers.

What if I am not comfortable sending my child to  
Preschool?

Regardless of the re-entry plan, our goal is to serve the entire preschool population. If classes are scheduled on campus and a family isn't comfortable sending students back to campus, we will work together to develop a teaching and learning plan.

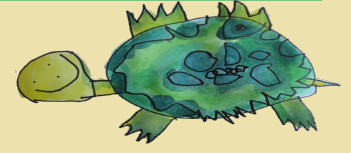
What happens if there is a pandemic resurgence?

If there is a resurgence of the virus, we will make decisions based on the health and safety of our students, faculty, and staff following the CDC, federal, state, and local guidelines - likely resulting in a period of shelter in place with remote learning or a blended learning scenario.

---

# FREQUENTLY ASKED QUESTIONS

---



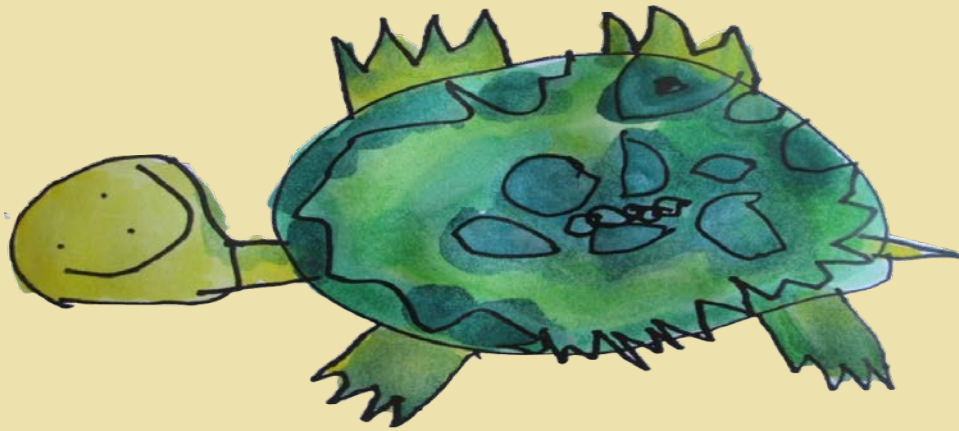
What is the protocol for a teacher or child who has tested positive for COVID-19?

- Identify an isolated area for anyone who exhibits COVID-like symptoms during hours of operation and call the family to ensure transport home
- Close off areas used by any sick person and do not use them until they have been disinfected.
- Advise the child's family and/or staff members not to return until they have met CDC criteria to discontinue home isolation
- Notify local health officials, staff, and families immediately of any possible case of COVID-19 while maintaining privacy and confidentiality
- Inform anyone exposed to a person diagnosed with COVID-19 to stay home and monitor for symptoms and to follow CDC guidance if symptoms develop.
- Defer to local health officials to determine a course of action and potential closure of school, campus, or building.

What is the protocol for a teacher or child who has a family member that resides with them who tests positive for COVID-19?

It is important to remember that anyone who has close contact with someone with COVID-19 should stay home for 10 days after exposure based on the time it takes to develop the illness. If this occurs, please contact the school as soon as possible.

Communication will be sent to the families in the class, maintaining privacy and support for those affected.



“

WHEN THE CHILD COMES TO THE  
DOORSTEP OF SCHOOL, WE  
WELCOME ALL OF HIM AND  
EVERYTHING HE BRINGS.

”

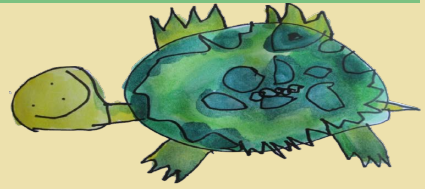
*celebrating excellence in early childhood education*

**25** YEARS

*early childhood education*



# RESOURCES



CENTERS FOR DISEASE  
CONTROL

<https://www.cdc.gov/>

AMERICAN ACADEMY OF  
PEDIATRICS

<https://services.aap.org/en/>

THE STATE OF ARIZONA

<https://azgovernor.govexecutive-orders>

ARIZONA DEPARTMENT OF  
HEALTH SERVICES

<https://www.azdhs.gov/>

MARICOPA COUNTY OF HEALTH  
SERVICES

[https://www.maricopa.gov/5493/  
K-12-Schools-and-Childcare-](https://www.maricopa.gov/5493/K-12-Schools-and-Childcare-)



