

COAT PEG

RAW BRONZE, 1969



This bronze coat-peg was conceived like a sculpture. Two hooks are placed on each side of a slightly concave oval.

Designed circa 1969 and edited by General Decoration, this original creation is of an exceptional beauty. Designers rarely use noble materials, and generous rounded shapes to design a coat-peg. Jules Wabbes stands out again with this piece of work.

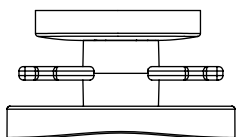
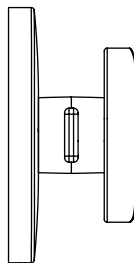
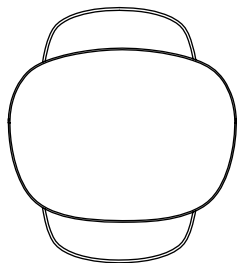
Multiple copies of this model decorated the vaults room of the former Générale de Banque in Brussels.

INFO@GENERALDECORATION.COM
WWW.GENERALDECORATION.COM

GEDE

COAT PEG

RAW BRONZE, 1969



DIMENSIONS (MM)			WEIGHT	FINISHES
LENGHT	WIDTH	HEIGHT	4,8 Kg	Raw Bronze
150	82	170		
GENERALDECORATION			SPRL GENERAL DECORATION 20 ROUTE DE BEAUMONT 1380 LASNE	