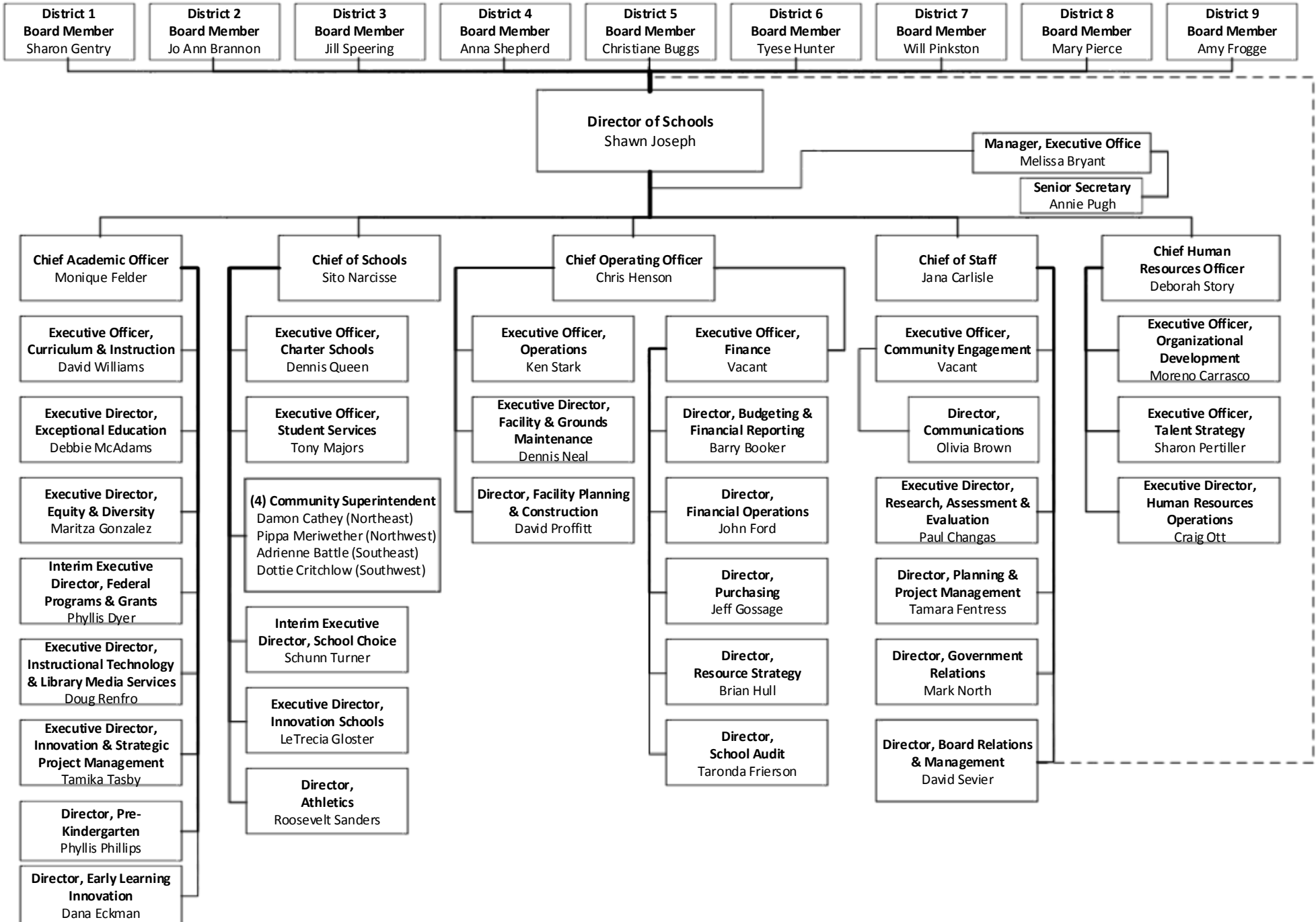
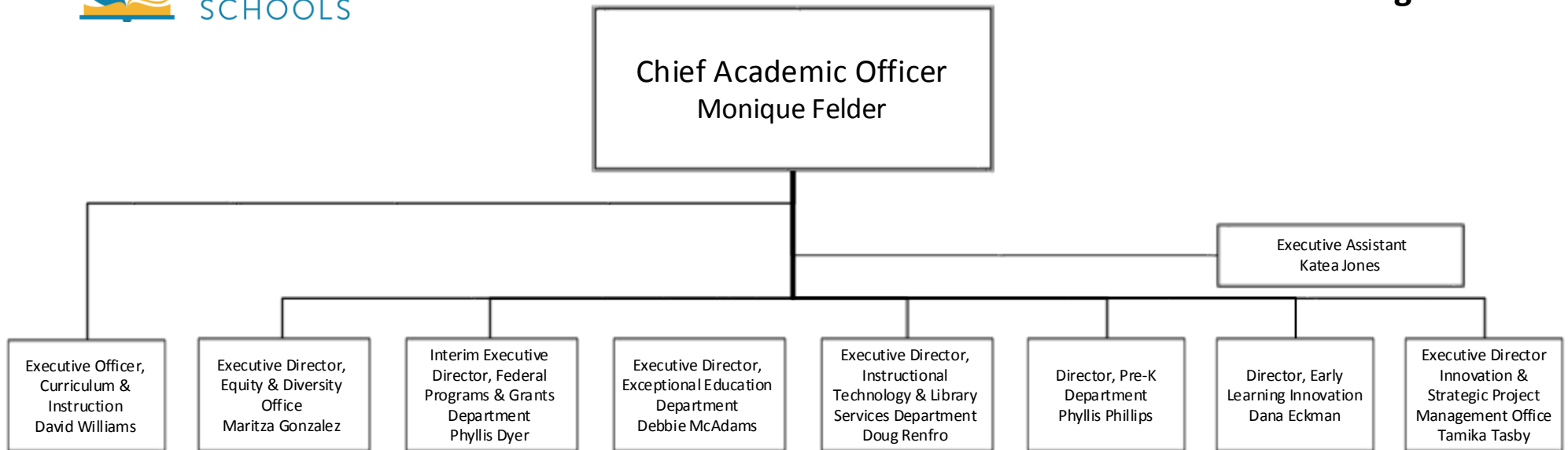




MNPS ORGANIZATIONAL STRUCTURE

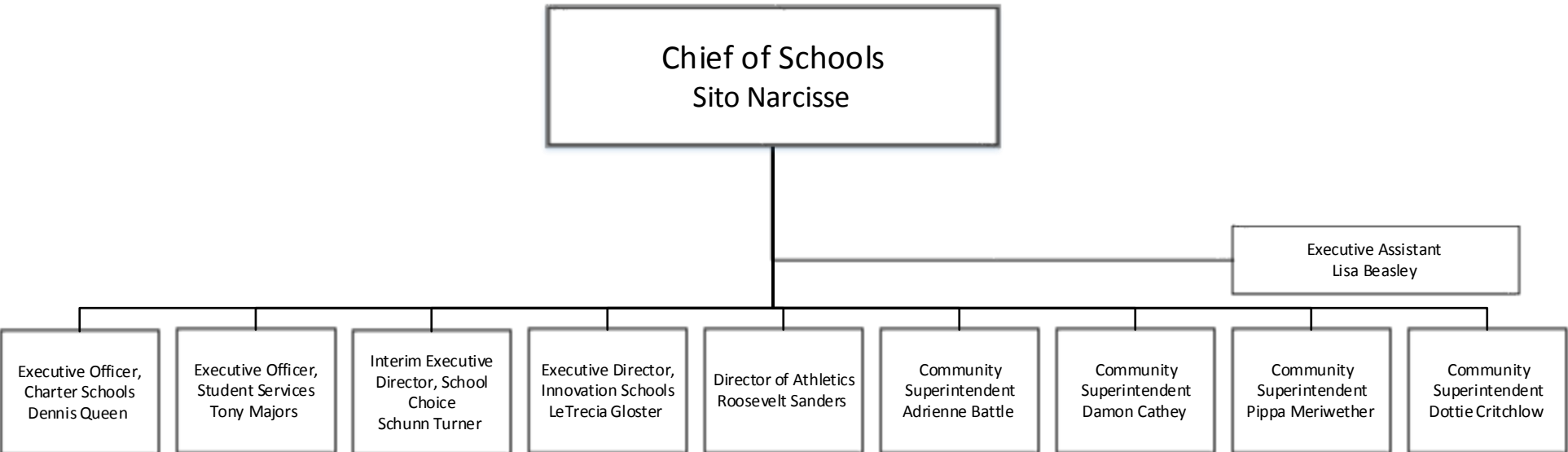


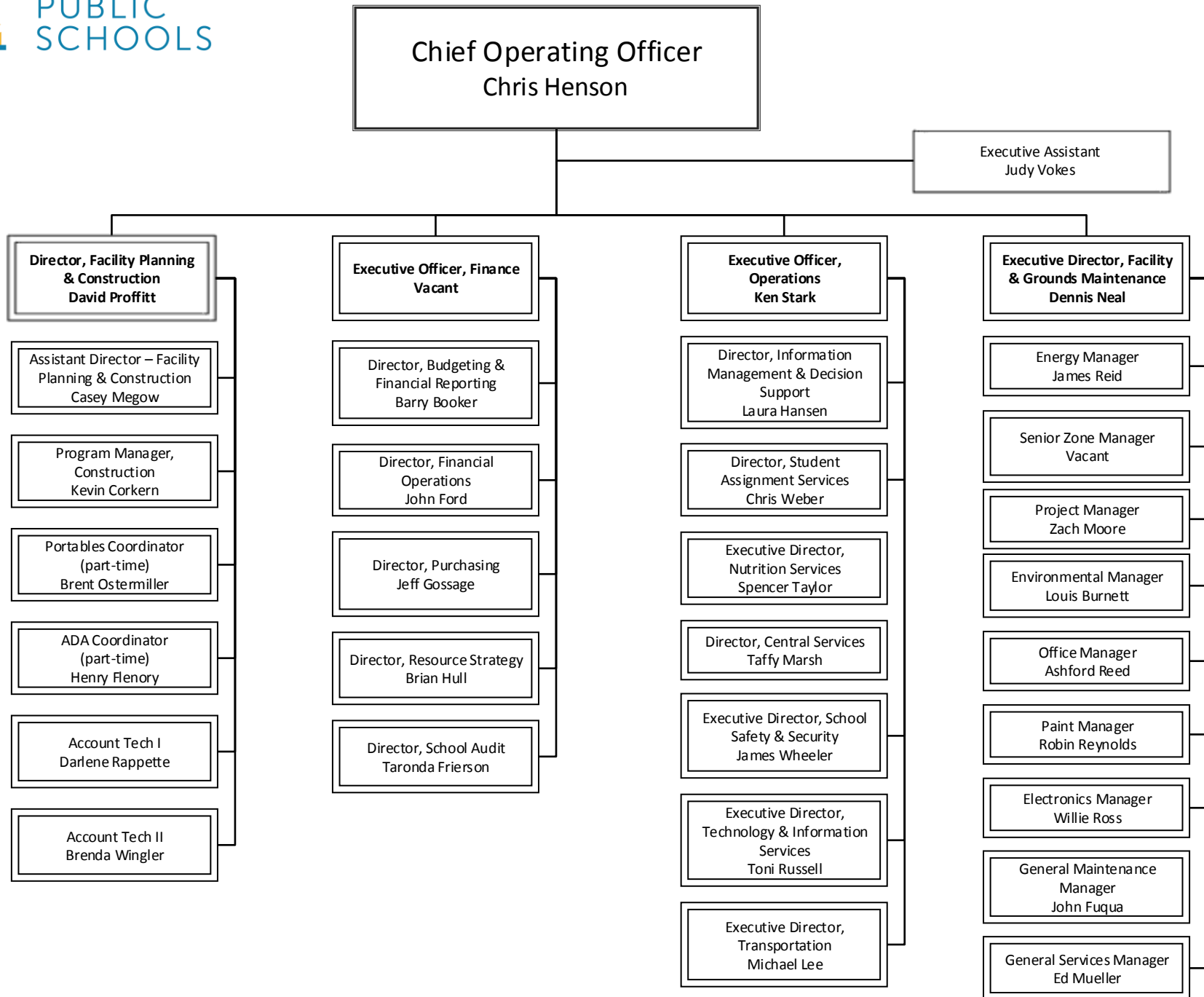
Division of Teaching & Learning





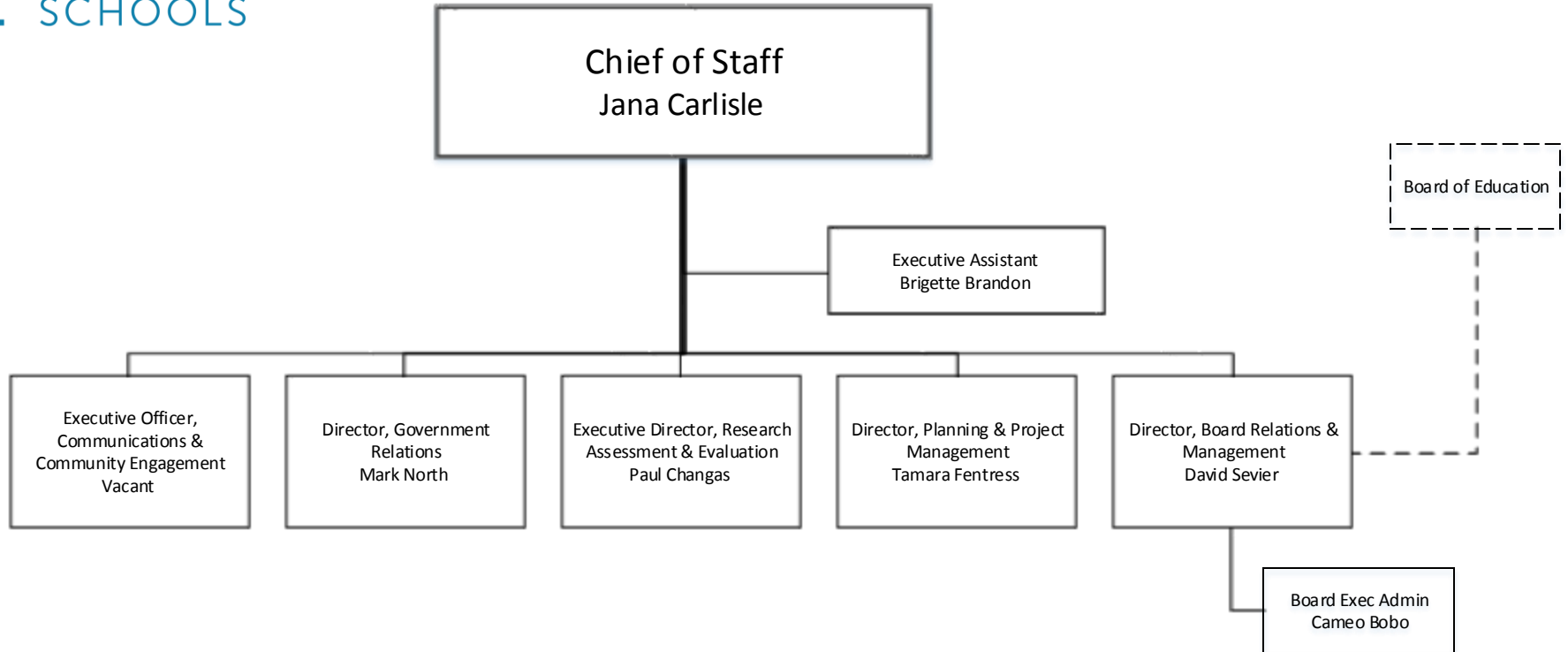
Chief of Schools

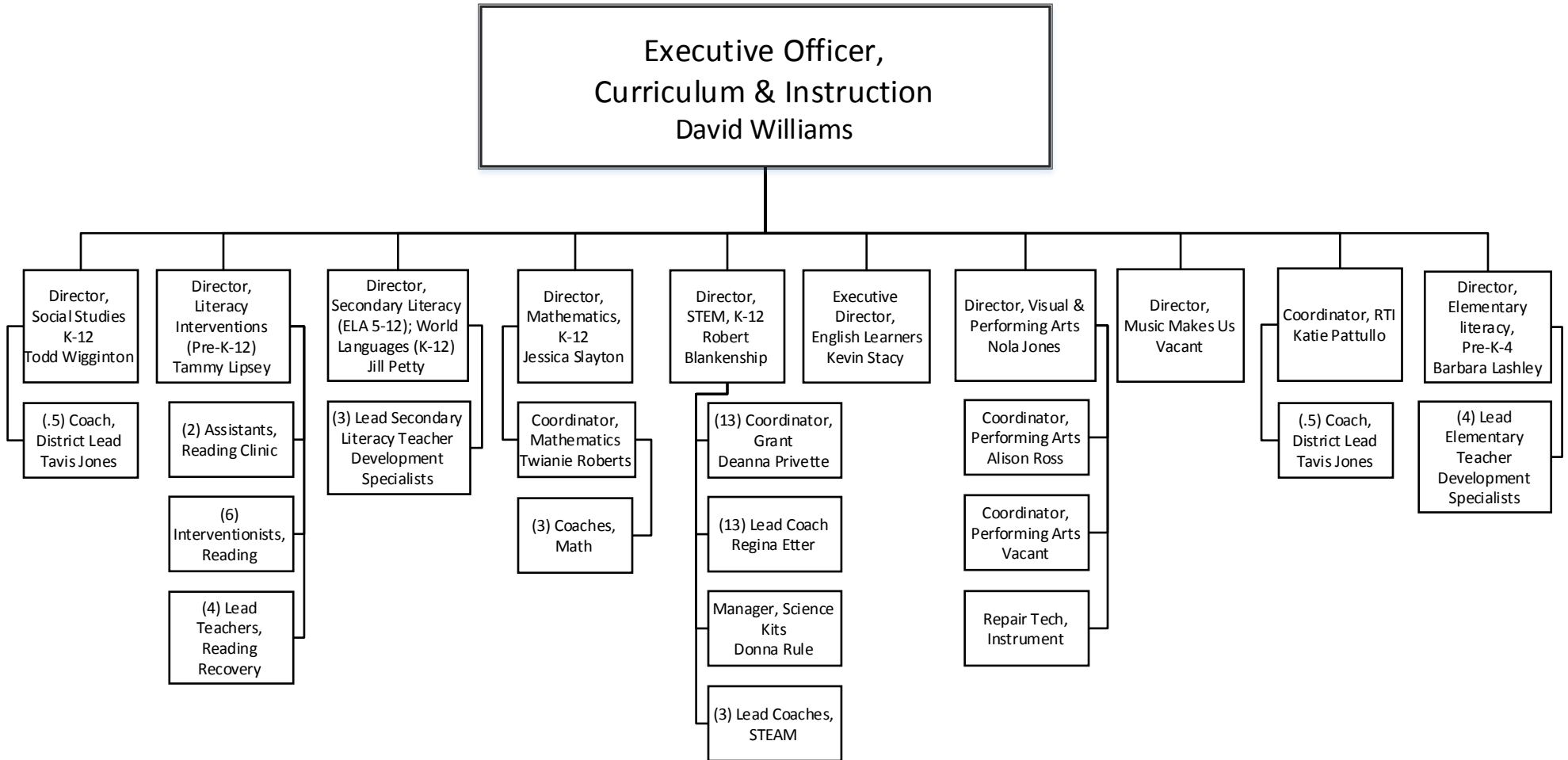


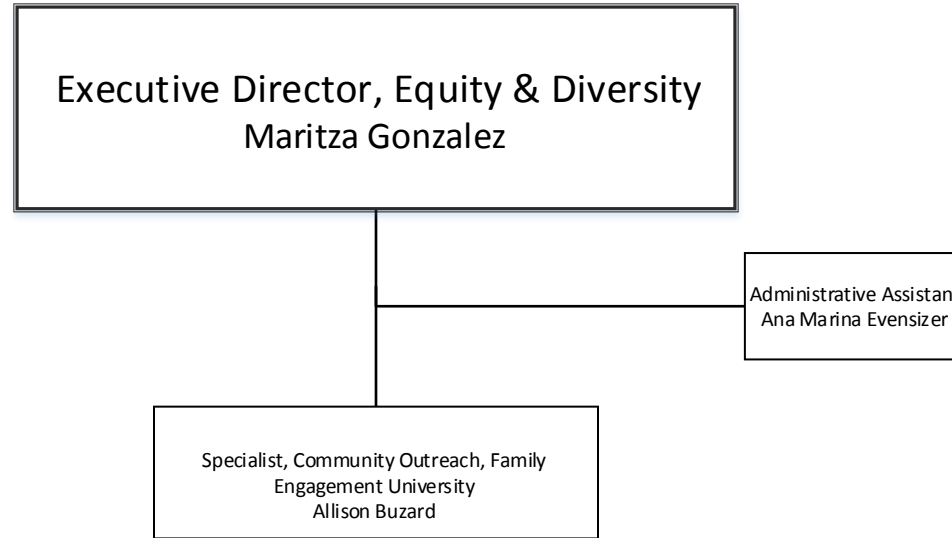




Chief of Staff



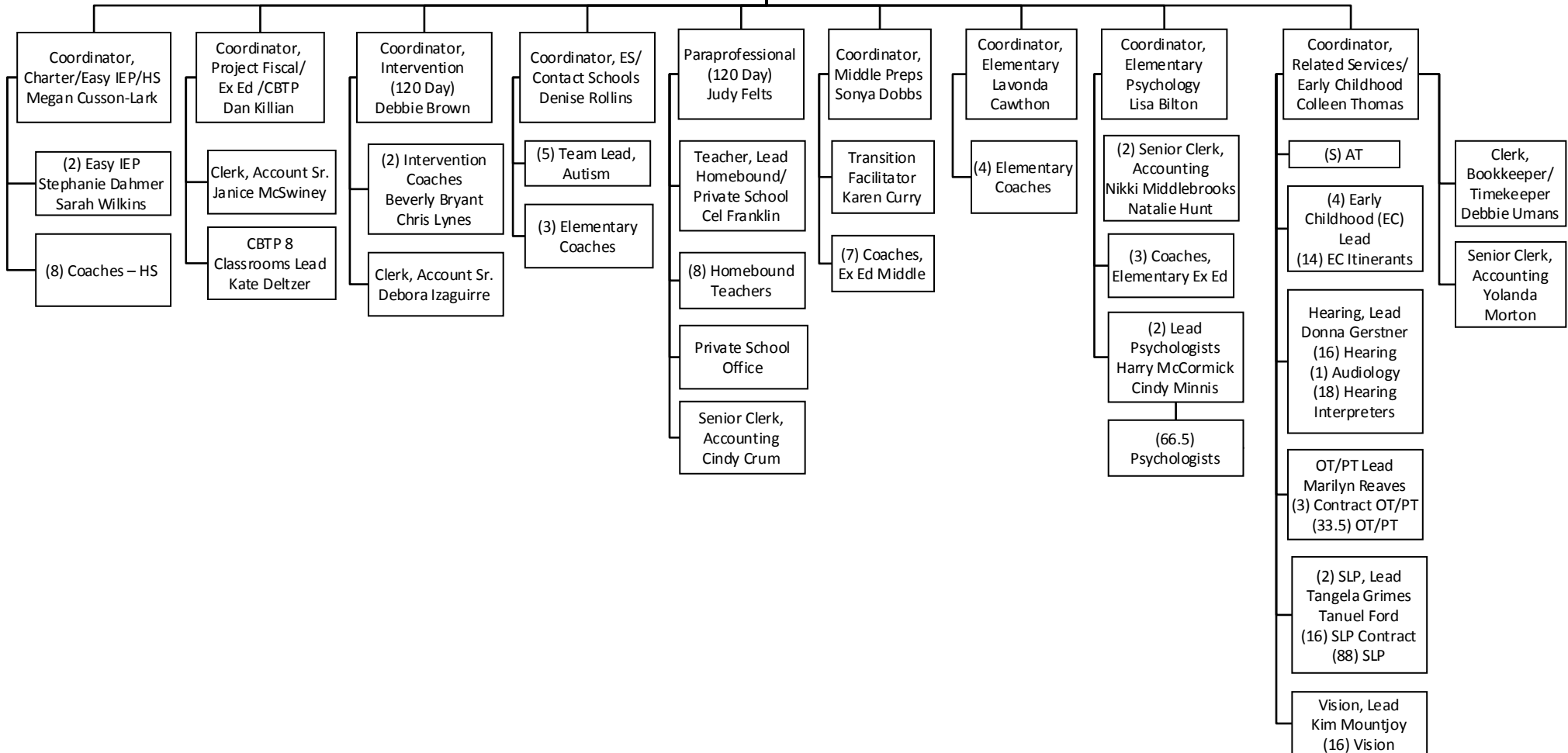


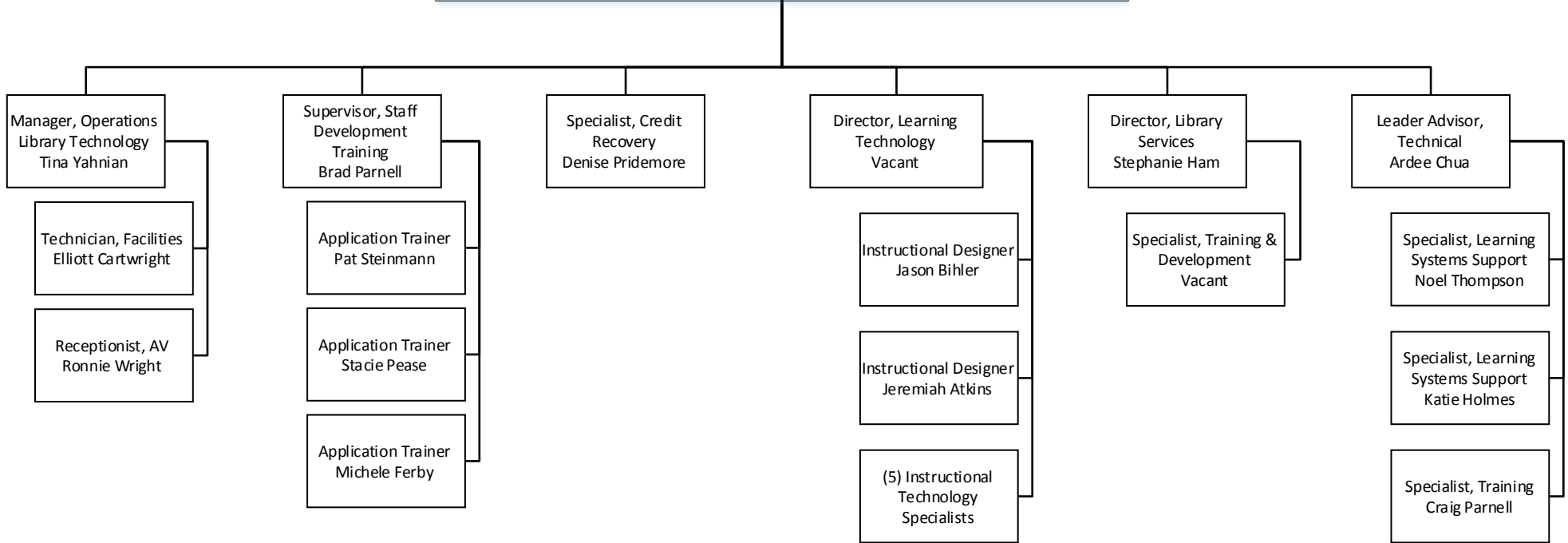
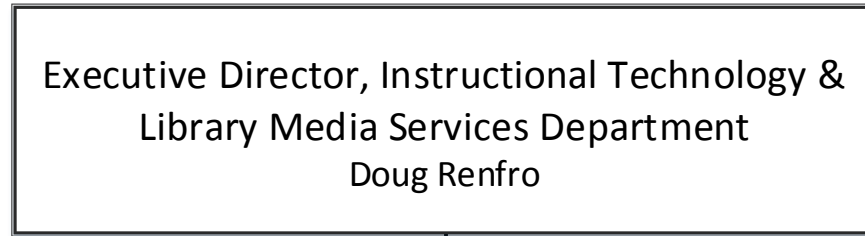


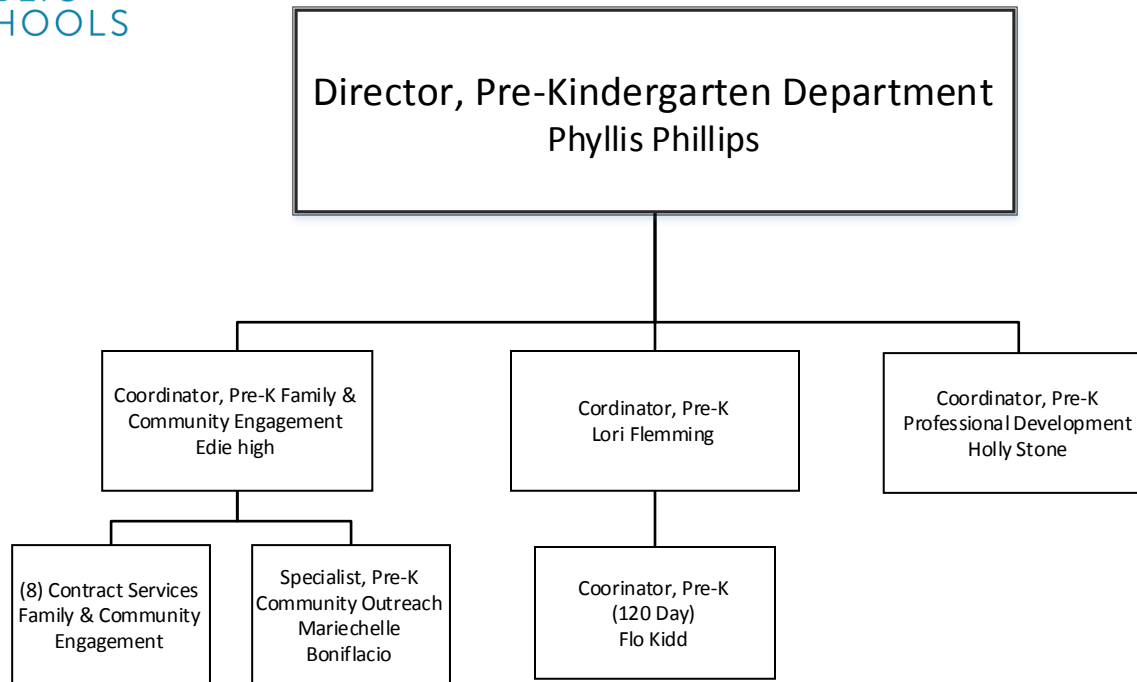
Executive Director – Exceptional Education
Debbie McAdams

Assistant, Program
Charlene Comer

Director of Exceptional
Education
Tiewasa (Tie)
Hodack







Interim Executive Director, Federal Programs & Grants Management
Phyllis Dyer

Senior Secretary
Vacant

Director, School Improvement
Clarissa Zellers

Director, Grants Development/
Management
Merrie Clark

Assistant, Program
Lateasha Johnson

Specialists, Grants
Simone Johnson-Jones

Coordinator,
Priority Schools
Francis White

Charter School Team
John Thomas
Shereka Roby-Grant
Beth Luken
Ernestine Wilson

Priority Schools Team
(Pearl Cohn)
Karen Johnson
(Hunters Lane)
Michael White
(Stratford)
Kinita Dollar
(Whites Creek)
Karen Flowers
(Maplewood)

Focus Schools
Team (Overton)
Carla Richards
(Hillwood)
Abigail Reynolds
(Antioch)
Melissa Meadow
(McGavock)

Coordinator,
Compliance
Phyllis Dyer

Grant Specialist II
Vicki Magsby

Manager, Fiscal
Kay Simpson

Manager, Grants
Laura Nichols

Specialist, Grants
Michelle Williams

Overton, Focus
School Lead
Kimberly
Covington

Pearl Cohn,
Priority School
Lead
Jeanine Renfro

Specialist,
Grants
Maya Young

Analyst, Fiscal
Kori Lyons

Specialist,
Contracts
Brenda Stone

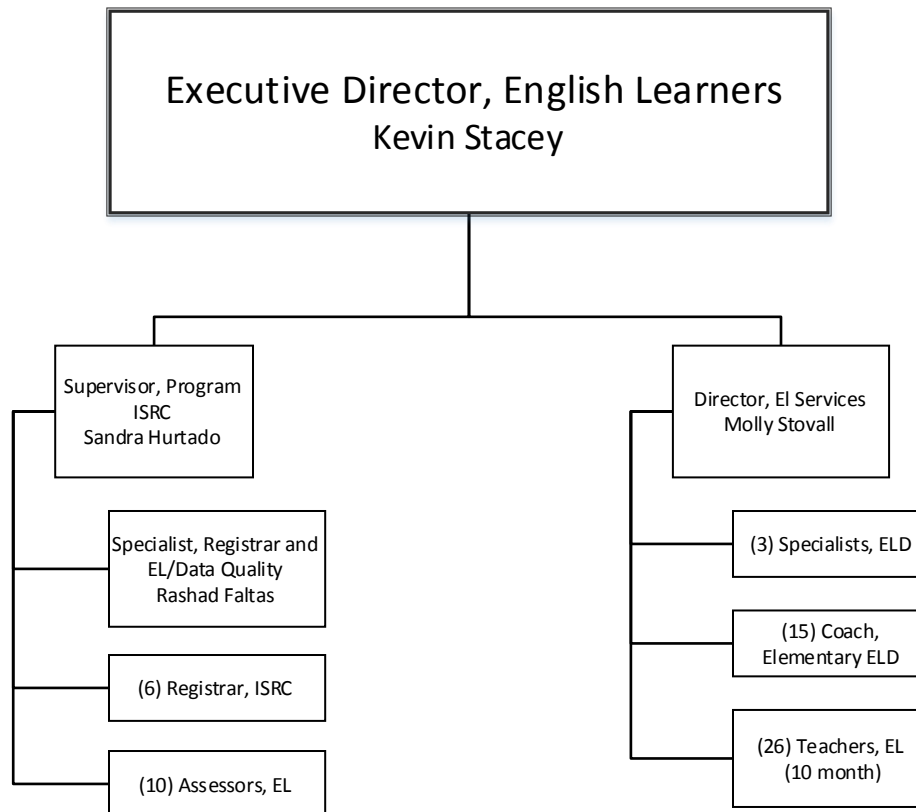
Assistant, Grants
Management
Sandra Britten

Pre-K Grant
Manager
Tracy Harper

Non-Public Liaison,
Susan Badgley

Consultant,
Grants
(120 Day)
Kat Manier

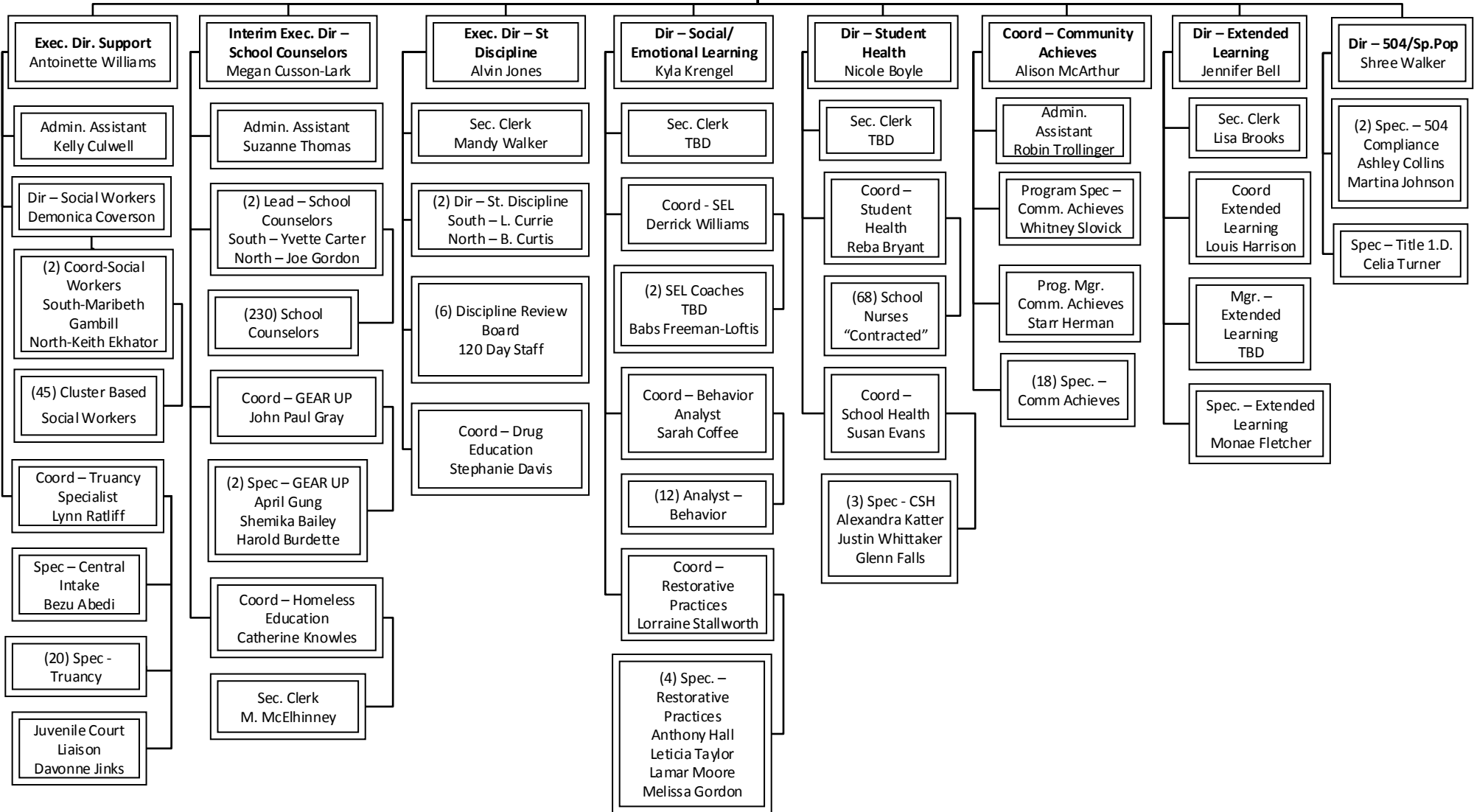
Assistant,
Grants
Shannon Gluck

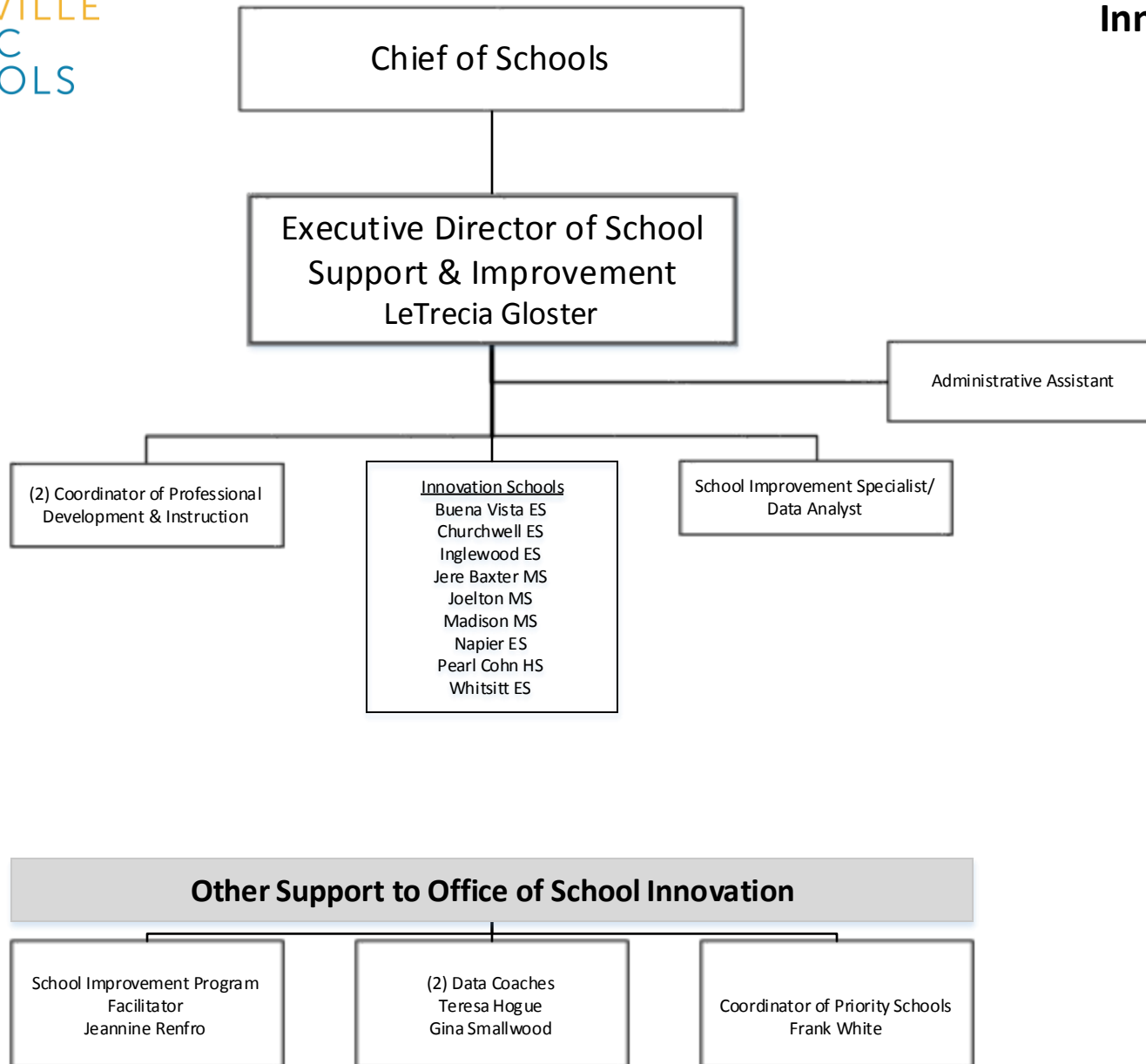


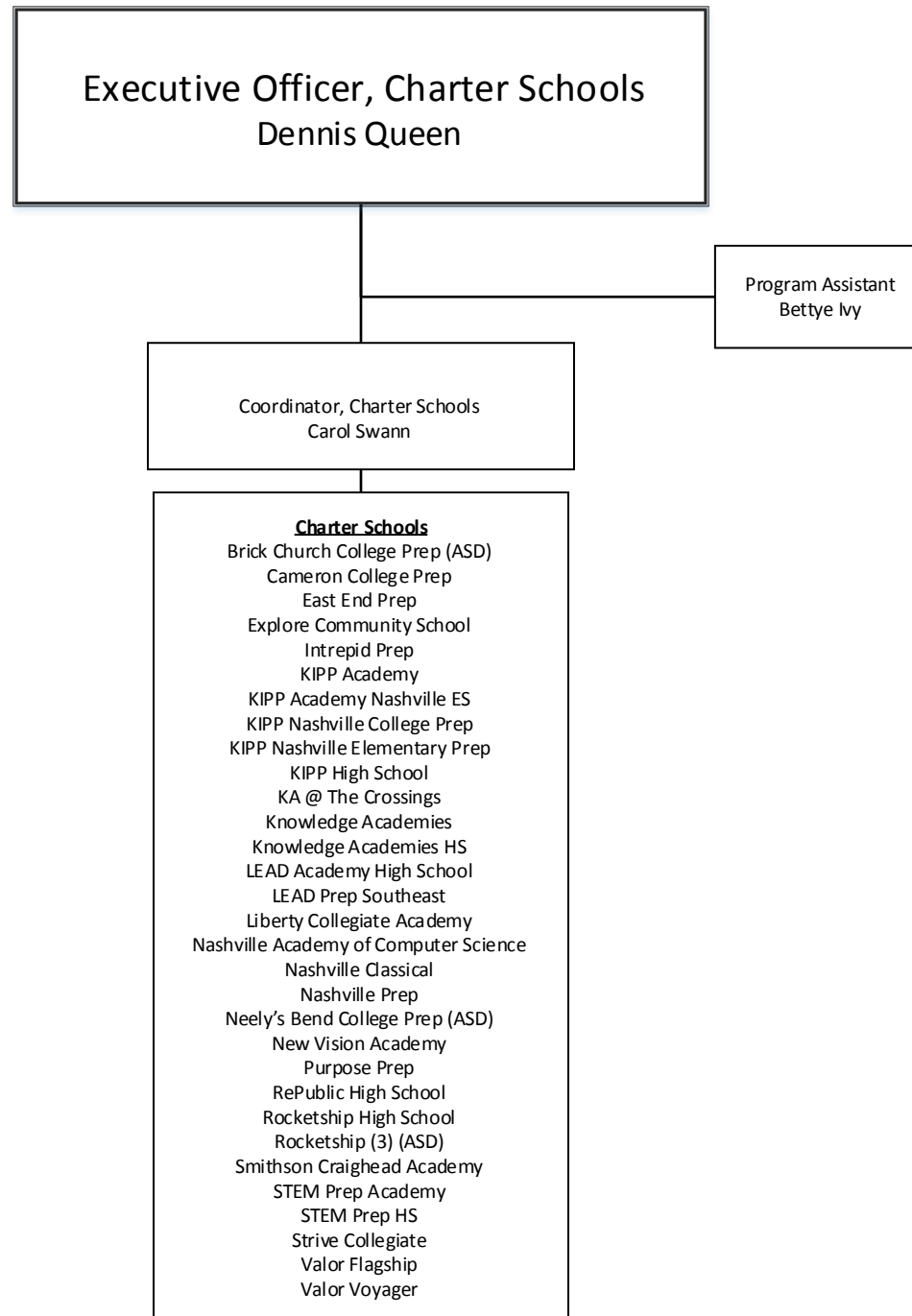
Executive Officer – Student Services Tony Majors

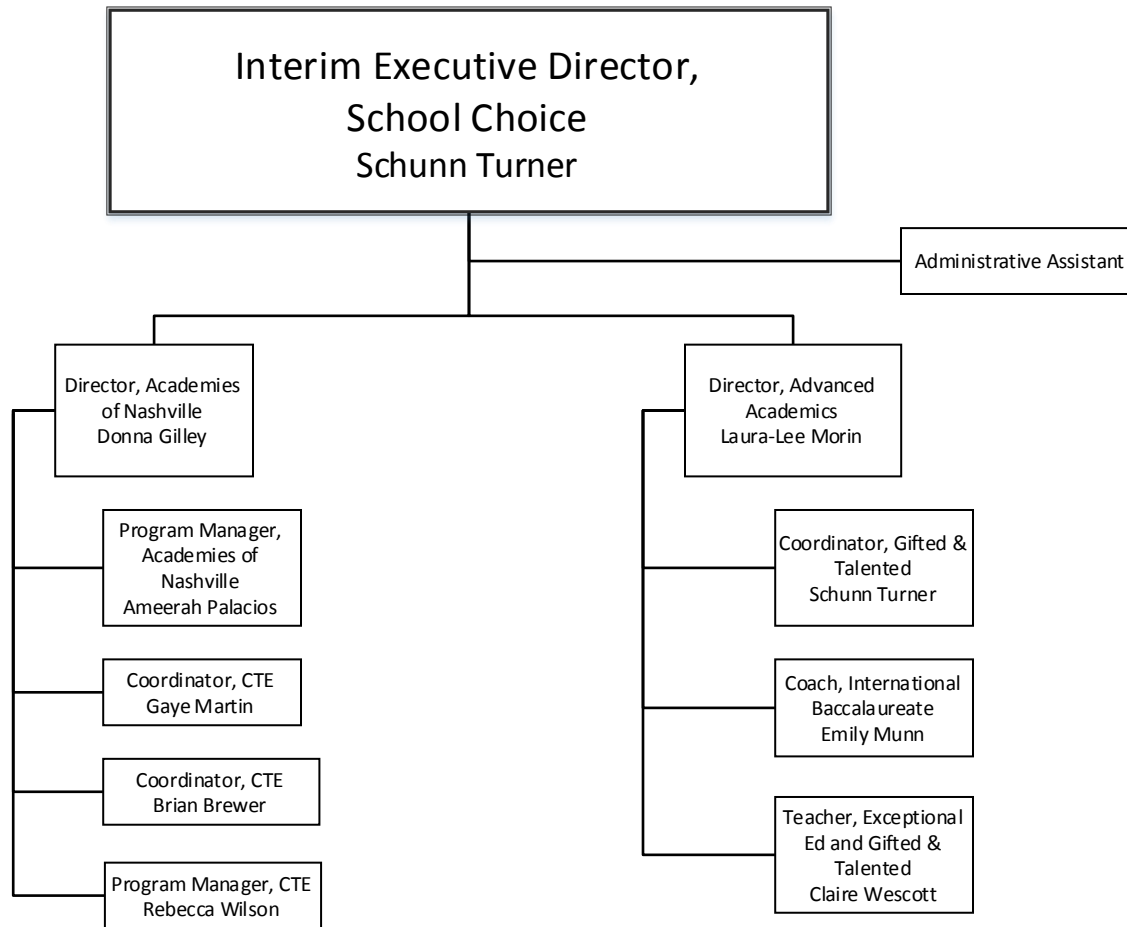
Coord – Student Services
Program Results
Bradley Redmond

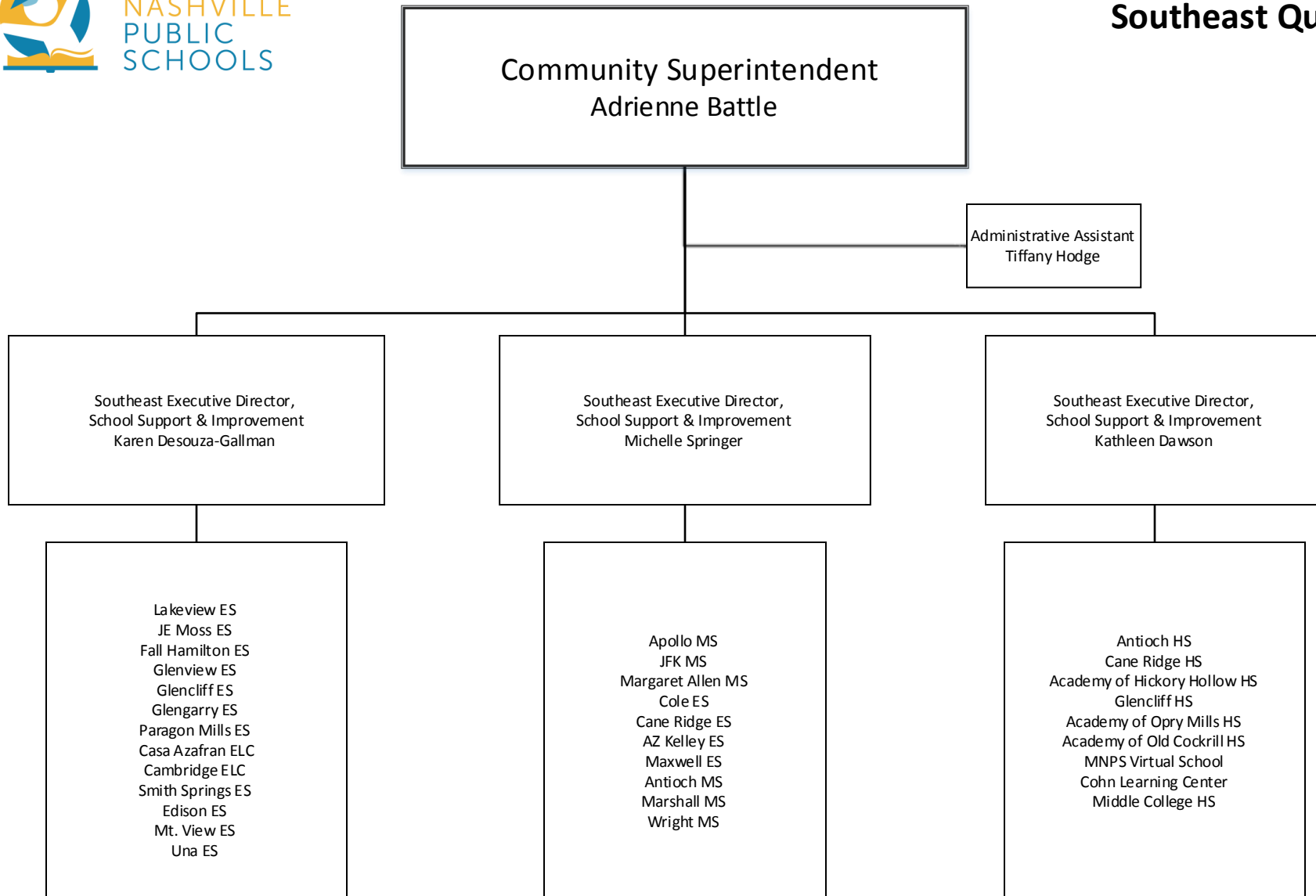
Admin. Assistant
Amanda Crutchfield

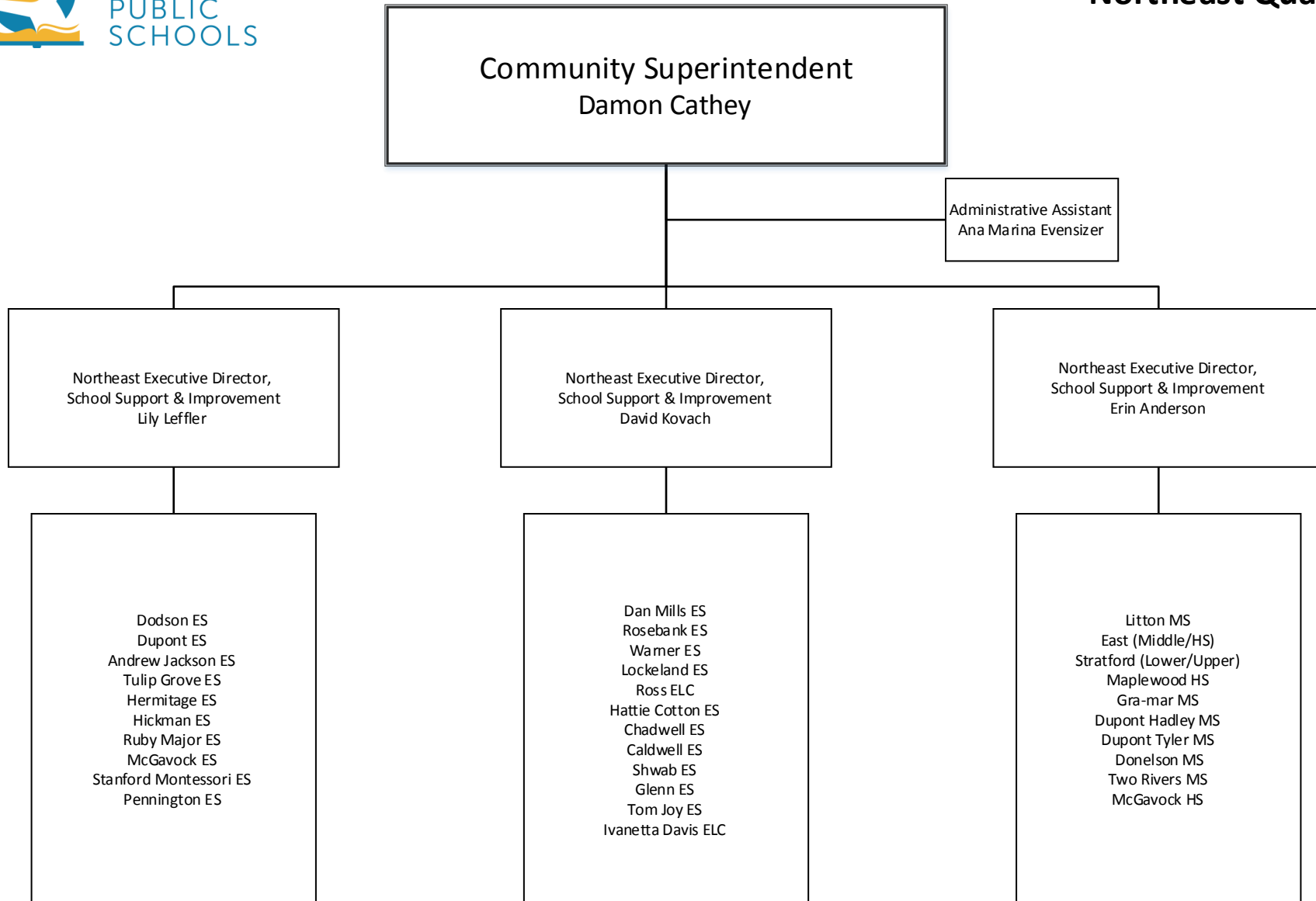


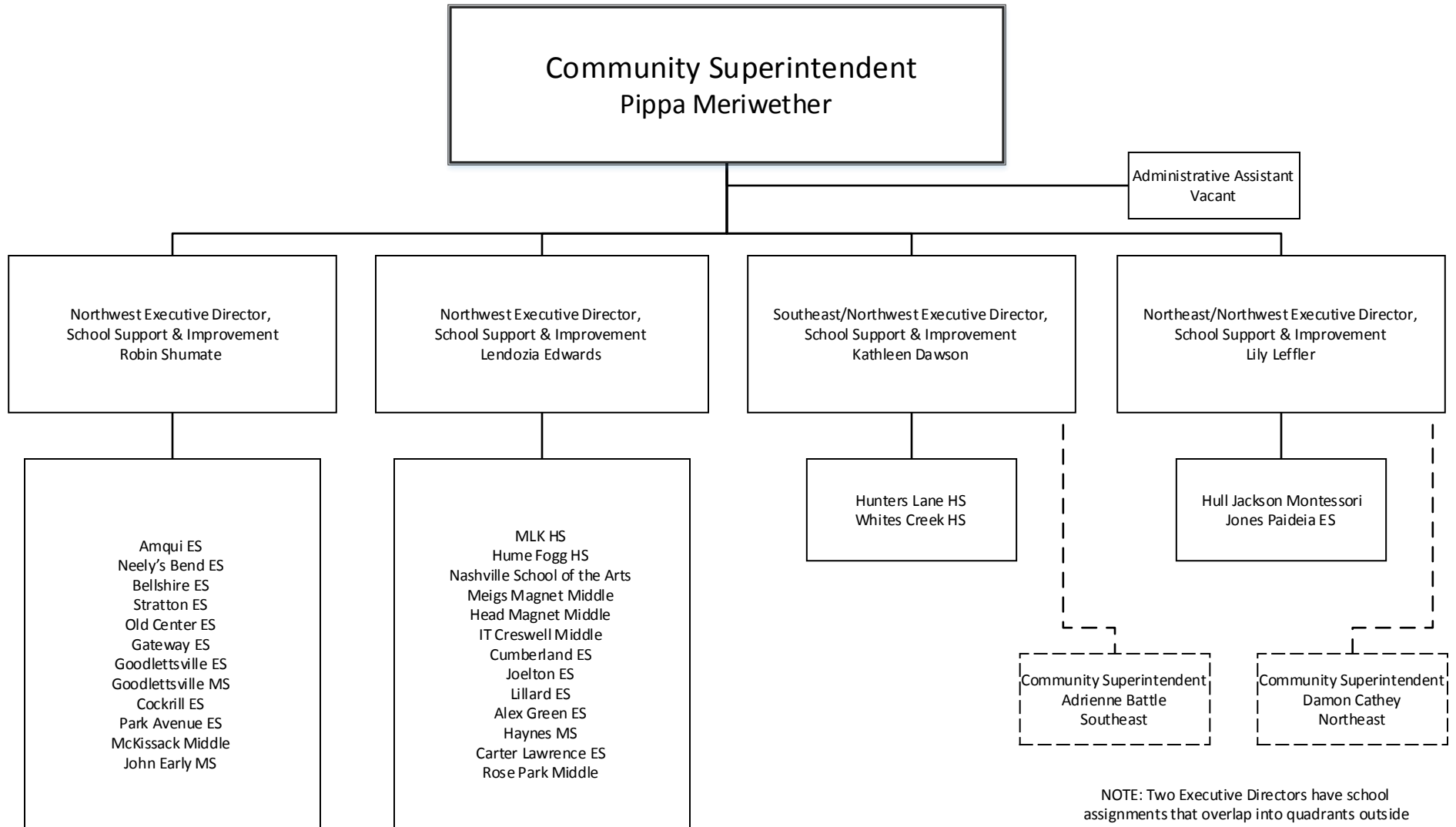




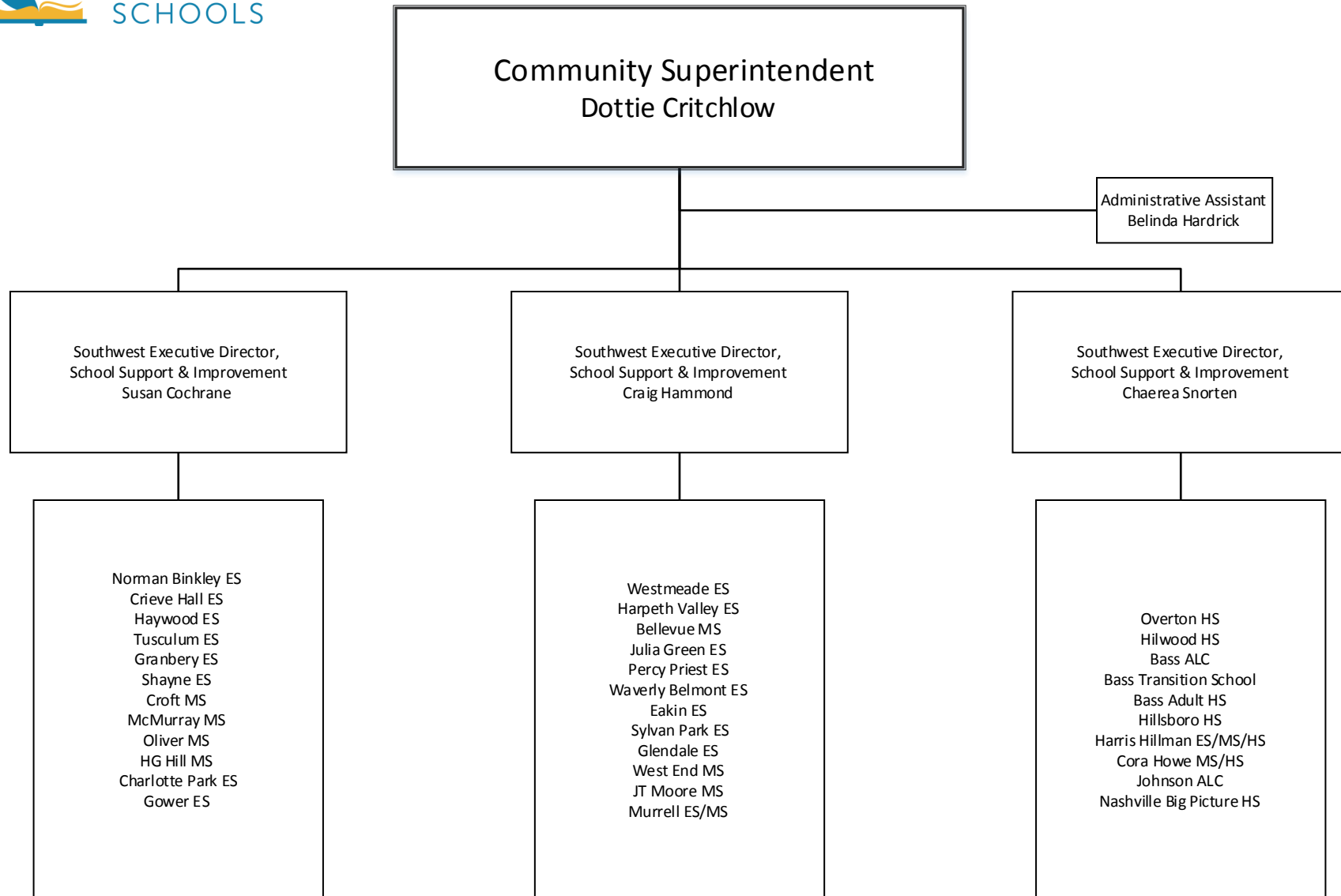


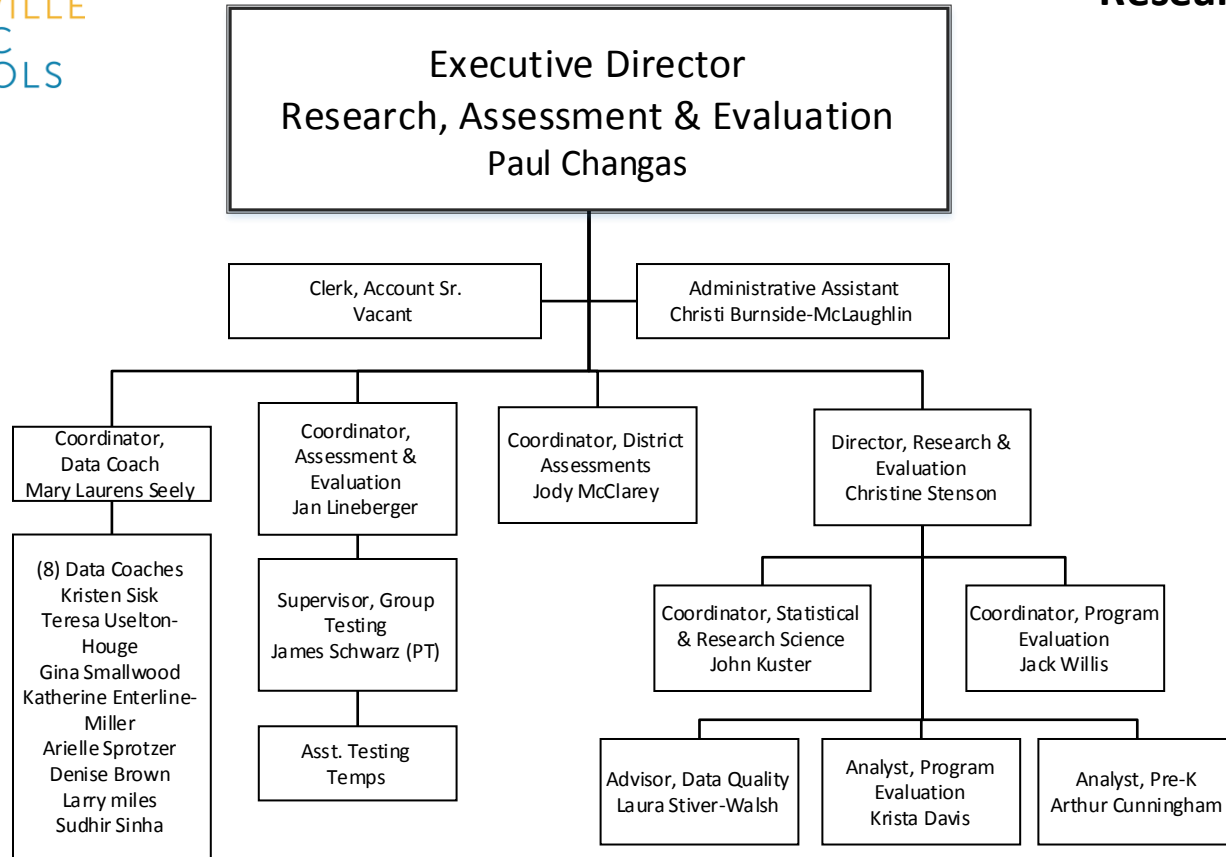






NOTE: Two Executive Directors have school assignments that overlap into quadrants outside their primary areas of responsibility. Their additional school assignments are displayed on the respective individual organizational charts.





Communications & Community Engagement

