

# MARZONI

LOOKBOOK

FALL · WINTER 2023

MADE FOR YOU  
*-- Su Misura --*



PURE NEW WOOL  
30000069

[www.MARZONI.it](http://www.MARZONI.it)





629 - 502 / 900

84% Wool  
16% Mohair  
150cm  
260g  
Off White



602 - 975 / 900

58% Viscose  
42% Wool  
150cm  
290g  
White



614 - 342 / 500

97% Supima Cotton  
3% Lycra  
145cm  
290g  
White





723 - 069 / 1200

100% Wool  
150cm  
270g  
White  
Super 130's



723 - 070 / 1200

100% Wool  
150cm  
270g  
Black  
Super 130's



723 - 071 / 1200

100% Wool  
150cm  
270g  
Blue  
Super 130's





607 - 816 / 900

100% Wool  
150cm  
260g  
Black



609 - 978 / 900

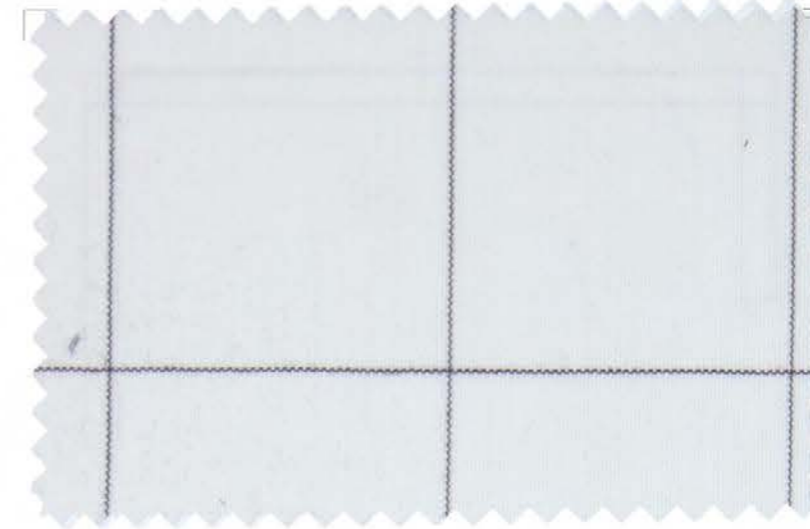
100% Wool  
150cm  
300g  
Black



609 - 420 / 1000

100% Wool  
150cm  
260g  
Black  
Super 130's





723 - 022 / 1200

100% Wool  
150cm  
270g  
White / Navy  
Super 130's



609 - 962 / 1200

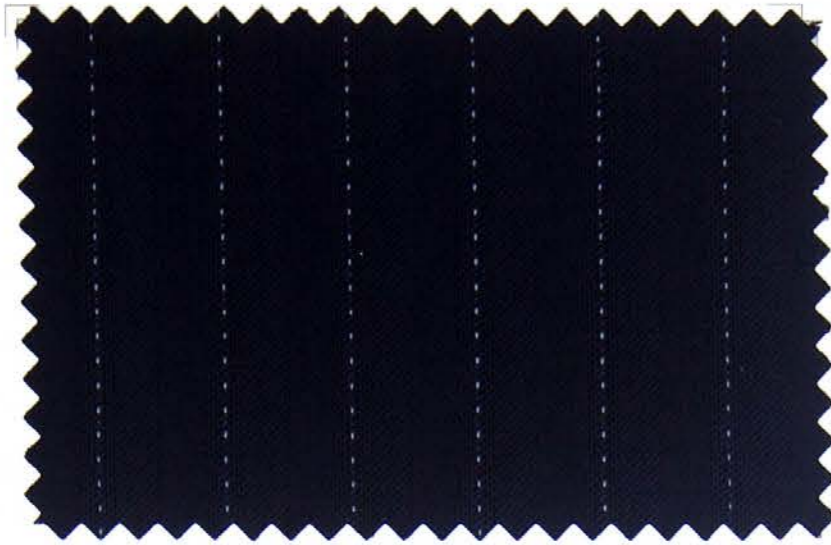
100% Wool  
150cm  
270g  
Dark Navy  
Super 150's



723 - 032 / 1200

100% Wool  
150cm  
270g  
Dark Navy  
Super 130's





606 - 343 / 800

100% Wool  
150cm  
260g  
Dark Navy / White



621 - 117 / 900

100% Wool  
150cm  
260g  
Dark Navy



621 - 118 / 900

100% Wool  
150cm  
260g  
Black





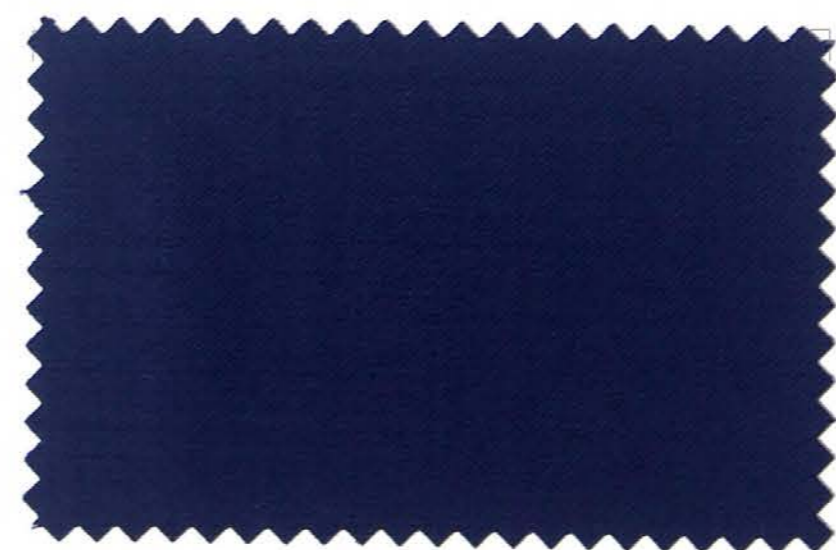
MARZONI



607 - 793 / 1000  
 100% Wool  
 150cm  
 255g  
 Blue



607 - 790 / 1000  
 100% Wool  
 150cm  
 255g  
 Navy / Blue



620 - 797 / 700  
 100% Wool  
 150cm  
 270g  
 Dark Blue





607 - 814 / 1200

100% Wool  
150cm  
310g  
Navy / Blue



607 - 820 / 900

100% Wool  
150cm  
240g  
Black



620 - 798 / 700

100% Wool  
150cm  
270g  
Navy







607 - 822 / 1200  
2% Polyamide  
98% Wool  
150cm  
275g  
Grey



607 - 830 / 1000  
95% Wool  
5% Polyester  
150cm  
250g  
Grey



620 - 915 / 900  
100% Wool  
150cm  
330g  
Navy





607 - 834 / 1000

89% Wool  
6% Polyester  
5% Polyamide  
150cm  
255g  
Blue



607 - 833 / 1000

89% Wool  
6% Polyester  
5% Polyamide  
150cm  
255g  
Grey



620 - 771 / 700

100% Wool  
150cm  
260g  
Black





609 - 442 / 1000

100% Wool  
150cm  
250g  
Light Grey  
Super 130's



609 - 387 / 1500

89% Wool  
6% Polyester  
5% Polyamide  
150cm  
240g  
Black



609 - 990 / 900

100% Wool  
150cm  
280g  
Black  
Super 150's





609 - 451 / 900

100% Wool  
150cm  
270g  
Blue  
Super 130's



609 - 436 / 1000

100% Wool  
150cm  
250g  
Blue  
Super 130's



600 - 126 / 700

100% Wool  
150cm  
250g  
Royal Blue  
Water Repellent





614 - 018 / 900

65% Wool  
35% Polyester  
150cm  
220g  
Blue



609 - 388 / 1500

89% Wool  
6% Polyester  
5% Polyamide  
150cm  
240g  
Navy



620 - 913 / 900

100% Wool  
150cm  
330g  
Royal Blue





609 - 444 / 1000

100% Wool  
150cm  
250g  
Bluish Grey  
Super 130's



609 - 389 / 1500

92% Wool  
4% Polyamide  
3% Polyester  
1% Elastane  
150cm  
290g  
Black



620 - 918 / 900

100% Wool  
150cm  
330g  
Black





607 - 805 / 1200

100% Wool  
150cm  
265g  
Blue



609 - 390 / 1500

92% Wool  
4% Polyamide  
3% Polyester  
1% Elastane  
150cm  
290g  
Silver



609 - 983 / 900

100% Wool  
150cm  
270g  
Charcoal  
Super 150's





612 - 008 / 1000

55% Wool  
45% Polyester  
150cm  
255g  
Navy



609 - 391 / 1500

92% Wool  
4% Polyamide  
3% Polyester  
1% Elastane  
150cm  
290g  
Navy



620 - 917 / 900

100% Wool  
150cm  
330g  
Navy







609 - 683 / 900

100% Wool  
150cm  
270g  
Dark Navy  
Super 130's



609 - 392 / 1500

92% Wool  
4% Polyamide  
3% Polyester  
1% Elastane  
150cm  
290g  
Navy



609 - 991 / 900

100% Wool  
150cm  
280g  
Navy  
Super 150's





609 - 466 / 900

72% Wool  
28% Polyester  
150cm  
280g  
Gold



609 - 393 / 1500

92% Wool  
4% Polyamide  
3% Polyester  
1% Elastane  
150cm  
290g  
Beige



620 - 778 / 700

100% Wool  
150cm  
270g  
Brown





MARZONI



609 - 439 / 1000

100% Wool  
150cm  
250g  
Green  
Super 130's



609 - 394 / 1500

92% Wool  
4% Polyamide  
3% Polyester  
1% Elastane  
150cm  
290g  
Beige



620 - 779 / 700

100% Wool  
150cm  
270g  
Camel





609 - 438 / 1000

100% Wool  
150cm  
260g  
Navy  
Super 130's



609 - 396 / 1500

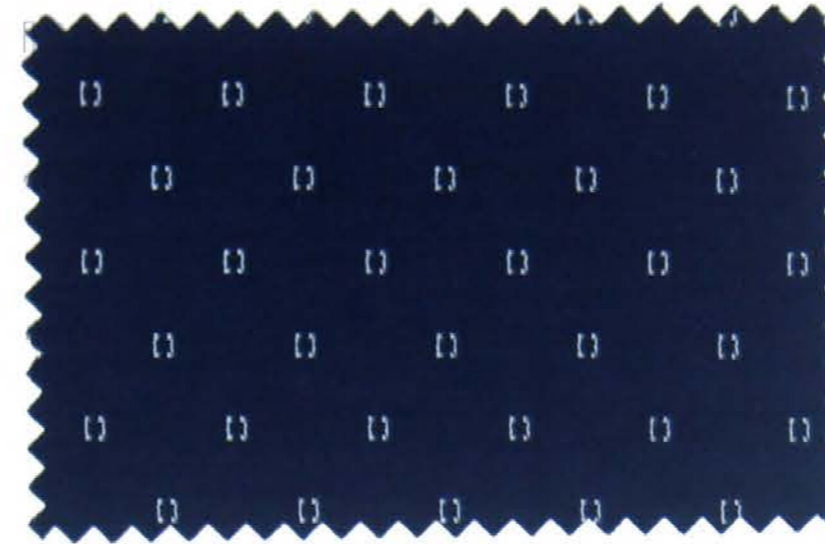
92% Wool  
4% Polyamide  
3% Polyester  
1% Elastane  
150cm  
290g  
Navy



600 - 109 / 700

100% Wool  
150cm  
240g  
Dark Bronze  
Water Repellent





614 - 006 / 900

59% Wool  
35% Polyester  
6% Silk  
150cm  
230g  
Navy



609 - 395 / 1500

92% Wool  
4% Polyamide  
3% Polyester  
1% Elastane  
150cm  
290g  
Black



600 - 124 / 700

100% Wool  
150cm  
250g  
Black  
Water Repellent





609 - 419 / 1000

100% Wool  
150cm  
260g  
Navy  
Super 130's



609 - 397 / 1500

92% Wool  
4% Polyamide  
3% Polyester  
1% Elastane  
150cm  
290g  
Navy



609 - 978 / 900

100% Wool  
150cm  
300g  
Black



MARZONI



MARZONI



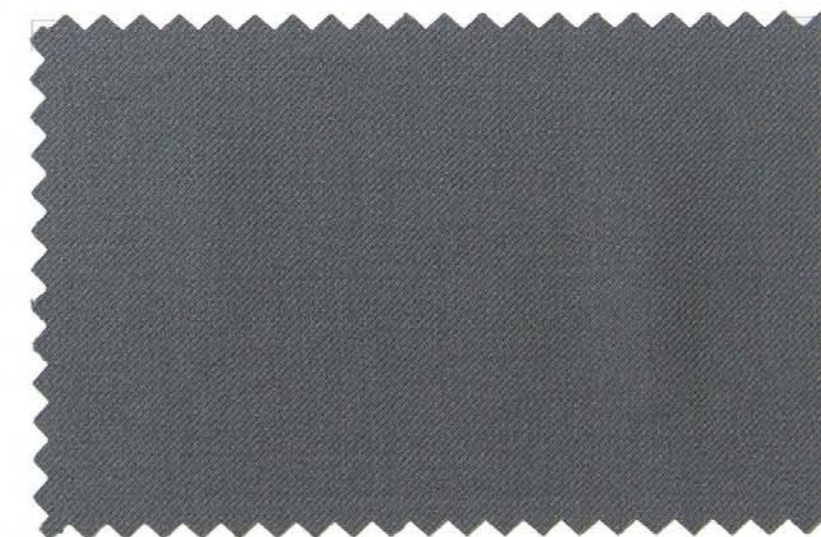
609 - 429 / 1000

100% Wool  
150cm  
260g  
Blue  
Super 130's



609 - 398 / 1500

92% Wool  
4% Polyamide  
3% Polyester  
1% Elastane  
150cm  
290g  
Blue



620 - 773 / 700

100% Wool  
150cm  
270g  
Grey





609 - 227 / 1200

90% Wool  
10% Silk  
150cm  
270g  
Sky Blue / Beige



609 - 399 / 1500

92% Wool  
4% Polyamide  
3% Polyester  
1% Elastane  
150cm  
290g  
Silver



609 - 982 / 900

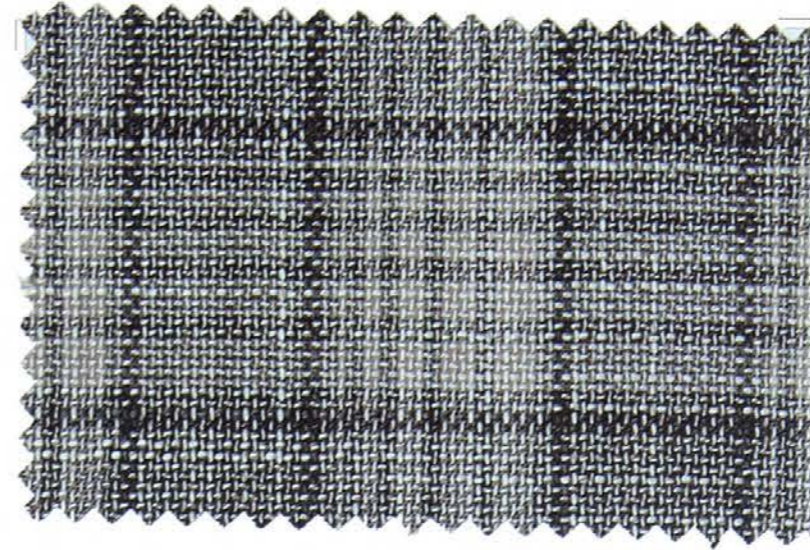
100% Wool  
150cm  
270g  
Gray  
Super 150's







MARZONI



609 - 228 / 1200

90% Wool  
10% Silk  
150cm  
270g  
Beige / Brown



609 - 400 / 1500

92% Wool  
4% Polyamide  
3% Polyester  
1% Elastane  
150cm  
290g  
Beige



609 - 978 / 900

100% Wool  
150cm  
300g  
Black





609 - 434 / 1000

100% Wool  
150cm  
260g  
Blue / Navy  
Super 130's



609 - 401 / 1500

92% Wool  
4% Polyamide  
3% Polyester  
1% Elastane  
150cm  
290g  
Navy



620 - 798 / 700

100% Wool  
150cm  
270g  
Navy



MARZONI



609 - 424 / 1000

100% Wool  
150cm  
260g  
Navy  
Super 130's



609 - 402 / 1500

92% Wool  
4% Polyamide  
3% Polyester  
1% Elastane  
150cm  
290g  
Navy



620 - 745 / 700

100% Wool  
150cm  
260g  
Denim





607 - 818 / 900

100% Wool  
150cm  
240g  
Black



609 - 403 / 1500

91% Wool  
5% Polyester  
4% Polyamide  
150cm  
250g  
Black



609 - 715 / 900

100% Wool  
150cm  
270g  
Black  
Super 150's





MARZONI



607 - 817 / 900  
100% Wool  
150cm  
240g  
Black / Blue



609 - 404 / 1500  
91% Wool  
5% Polyester  
4% Polyamide  
150cm  
250g  
Navy



620 - 750 / 700  
100% Wool  
150cm  
270g  
Navy





609 - 641 / 900

100% Wool  
150cm  
260g  
Blue  
Super 130's



612 - 012 / 1000

96% Wool  
3% Polyamide  
1% Elastine  
150cm  
270g  
Navy



607 - 529 / 900

100% Wool  
150cm  
270g  
Blue





607 - 807 / 900

100% Wool  
150cm  
240g  
Black



612 - 021 / 1200

51% Wool  
49% Viscose  
150cm  
260g  
Black



721 - 017 / 900

100% Wool  
150cm  
260g  
Black





609 - 455 / 900

100% Wool  
150cm  
270g  
Black  
Super 130's



612 - 022 / 1200

51% Wool  
49% Viscose  
150cm  
260g  
White



721 - 018 / 900

100% Wool  
150cm  
260g  
White



MARZONI





MARZONI



607 - 791 / 1000

100% Wool  
150cm  
255g  
Green



612 - 023 / 1200

51% Wool  
49% Viscose  
150cm  
260g  
Black



609 - 715 / 900

100% Wool  
150cm  
270g  
Black  
Super 150's





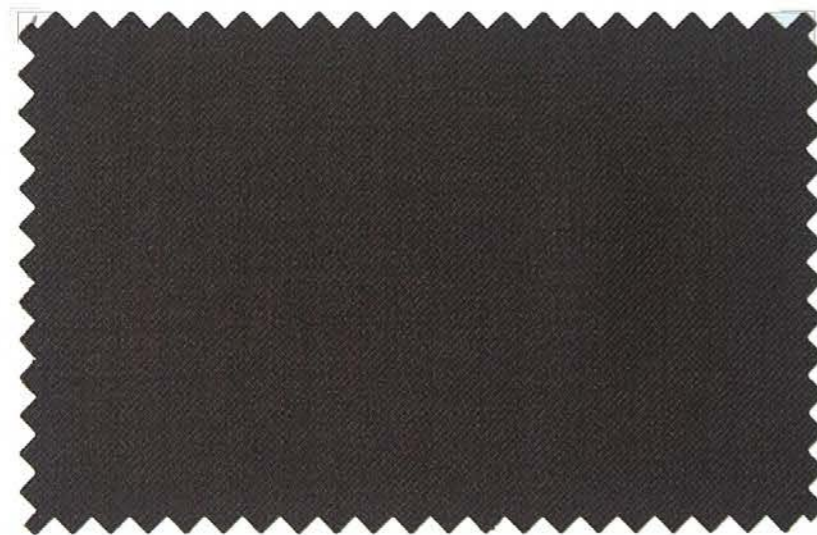
609 - 654 / 900

100% Wool  
150cm  
260g  
Maroon  
Super 130's



612 - 024 / 1200

51% Wool  
49% Viscose  
150cm  
260g  
Maroon



620 - 780 / 700

100% Wool  
150cm  
270g  
Brown





MARZONI



612 - 033 / 1200

51% Wool  
49% Viscose  
150cm  
260g  
Black



612 - 025 / 1200

51% Wool  
49% Viscose  
150cm  
260g  
Black



600 - 124 / 700

100% Wool  
150cm  
250g  
Black  
Water Repellent





609 - 682 / 900

100% Wool  
150cm  
270g  
Charcoal  
Super 130'



612 - 026 / 1200

51% Wool  
49% Viscose  
150cm  
260g  
Navy



607 - 531 / 900

100% Wool  
150cm  
270g  
Navy



MARZONI



612 - 029 / 1200

51% Wool  
49% Viscose  
150cm  
260g  
Green



612 - 027 / 1200

51% Wool  
49% Viscose  
150cm  
260g  
Green



620 - 919 / 900

100% Wool  
150cm  
330g  
Olive





614 - 019 / 900

65% Wool  
35% Polyester  
150cm  
220g  
Navy



612 - 028 / 1200

51% Wool  
49% Viscose  
150cm  
260g  
Navy



620 - 750 / 700

100% Wool  
150cm  
270g  
Navy

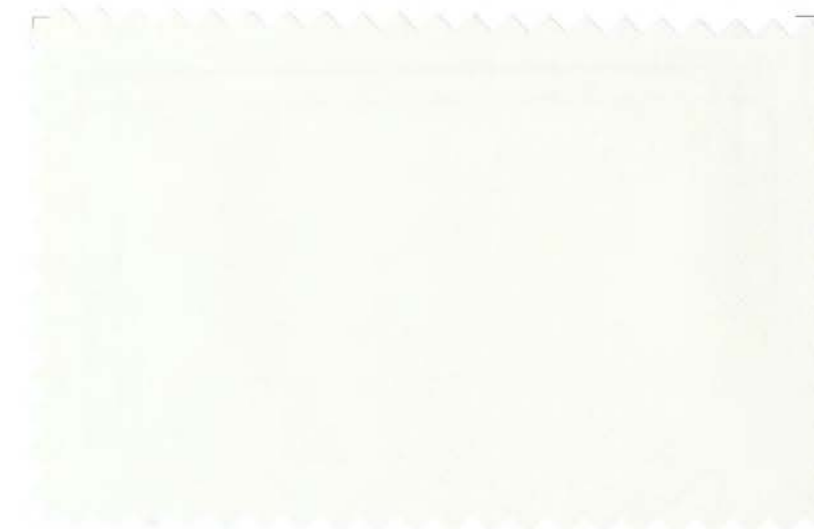




607 - 806 / 1200  
100% Wool  
150cm  
310g  
Grey



612 - 030 / 1200  
51% Wool  
49% Viscose  
150cm  
260g  
Black



620 - 772 / 700  
100% Wool  
150cm  
270g  
Cream





609 - 441 / 1000

100% Wool  
150cm  
250g  
Maroon / Blue  
Super 130's



612 - 031 / 1200

51% Wool  
49% Viscose  
150cm  
260g  
Maroon



620 - 785 / 700

100% Wool  
150cm  
260g  
Maroon







MARZONI

612 - 018 / 1000

53% Viscose  
47% Wool  
150cm  
280g  
Black



612 - 032 / 1200

51% Wool  
49% Viscose  
150cm  
260g  
Navy



620 - 751 / 700

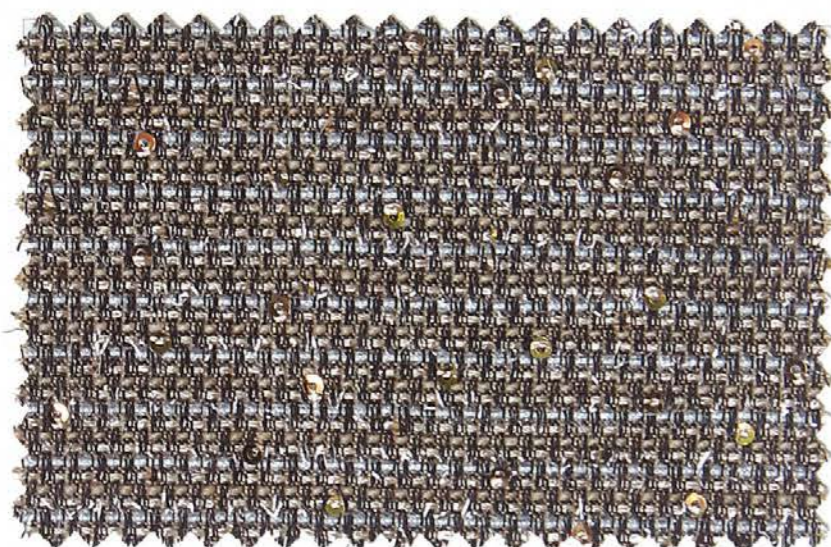
100% Wool  
150cm  
270g  
Navy





609 - 446 / 1000

100% Wool  
150cm  
260g  
Dark Navy  
Super 130's



612 - 034 / 1500

61% Wool  
25% Polyester  
13% Polyamide  
1% Lycra  
150cm  
350g  
Gold



620 - 779 / 700

100% Wool  
150cm  
270g  
Camel





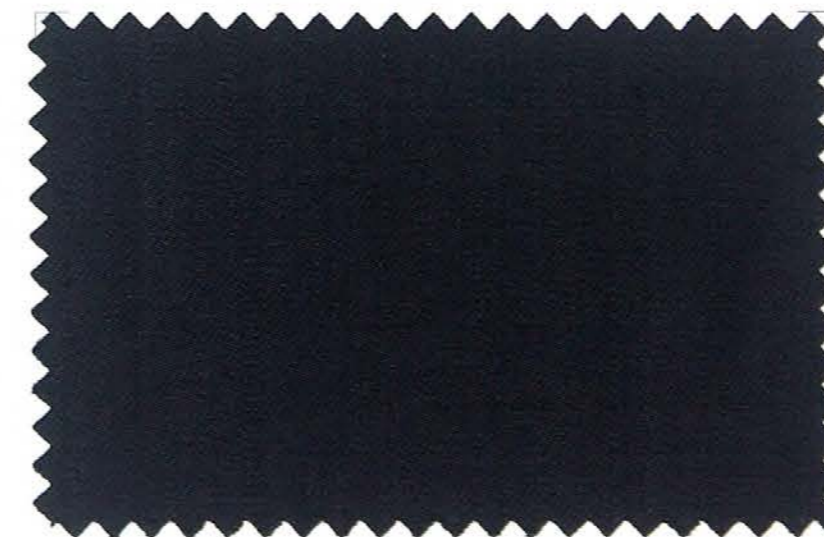
609 - 459 / 900

100% Wool  
150cm  
270g  
Navy  
Super 130's



612 - 035 / 1500

61% Wool  
25% Polyester  
13% Polyamide  
1% Lycra  
150cm  
350g  
Black



628 - 710 / 1200

92% Wool  
8% Cashmere  
150cm  
290g  
Black  
Super 140's





605 - 306 / 900

100% Cotton  
150cm  
330g  
Blue



605 - 305 / 900

100% Cotton  
150cm  
330g  
Green



620 - 937 / 900

100% Wool  
150cm  
260g  
Black





MARZONI



605 - 309 / 900  
100% Cotton  
150cm  
330g  
Maroon



605 - 308 / 900  
100% Cotton  
150cm  
330g  
Light Purple



620 - 862 / 900  
100% Wool  
150cm  
360g  
Orchid





605 - 295 / 900

100% Cotton  
150cm  
470g  
Red



605 - 311 / 900

100% Cotton  
150cm  
330g  
Black



620 - 771 / 700

100% Wool  
150cm  
260g  
Black





605 - 315 / 900  
100% Cotton  
150cm  
330g  
Dark Burgundy



605 - 313 / 900  
100% Cotton  
150cm  
330g  
Violet



620 - 888 / 900  
100% Wool  
150cm  
340g  
Purple





605 - 297 / 900

100% Cotton  
150cm  
470g  
Olive



605 - 317 / 900

100% Cotton  
150cm  
330g  
Golden



620 - 831 / 900

100% Wool  
150cm  
340g  
Brown







MARZONI



605 - 299 / 900

100% Cotton  
150cm  
470g  
Lime



605 - 318 / 900

100% Cotton  
150cm  
330g  
Navy



620 - 877 / 900

100% Wool  
150cm  
340g  
Royal Blue





MARZONI

MARZONI

*all rights reserved*