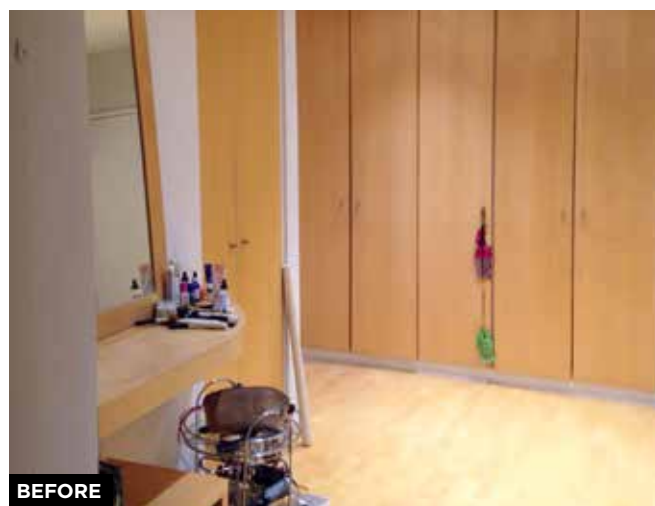


DATED LOOK
Right With its yellowing laminate flooring and old-fashioned wardrobes, the old bedroom was in need of a modern makeover



BEFORE

Real Homes
CASE STUDY

MODERN BEDROOM MAKEOVER

Julia Boiko gave a tired bedroom and dressing area a new lease of life with pops of colour and pattern

WORDS SARAH WARWICK PHOTOGRAPHS RICHARD GADSBY

After having the same style in my bedroom for many years, I was fed up with the look of it,' says Julia. 'Both the birch doors of the wardrobes and the wooden floor had gone yellow, and I just couldn't stand to look at it anymore. One day, I woke up and called my builder to get started on a brand-new look. It was a snap decision but I'd spent months wondering what I could do with the space.'

Creating a stylish master bedroom had been part of Julia's renovation plans ever since the house was first extended 12 years ago to create extra space on the top floor. Previously, the master bedroom was where a dressing room and en suite are now located, and extending meant the couple could have a more spacious room. However, time had taken its toll on the extension, the walls were cracked and the space needed redecorating.

As well as the builder, Julia contacted interior designer Elena Romanova, both of whom she'd met through friends. Elena had previously worked with Julia on the downstairs of her house and the pair had talked about a full home makeover, but it hadn't happened. 'I told Elena I was starting on the bedroom and that we should think about how it could look,' say Julia. 'She was shocked that I'd finally decided to go for it!' Without a moment to



SLEEK STORAGE

Above Julia is delighted she used accents of bold colour in her bedroom. Chair and mirror, both Wayfair. Throw, Marks & Spencer

THE OWNERS

Julia Boiko lives here with her husband, Pavel, who works in the fruit business

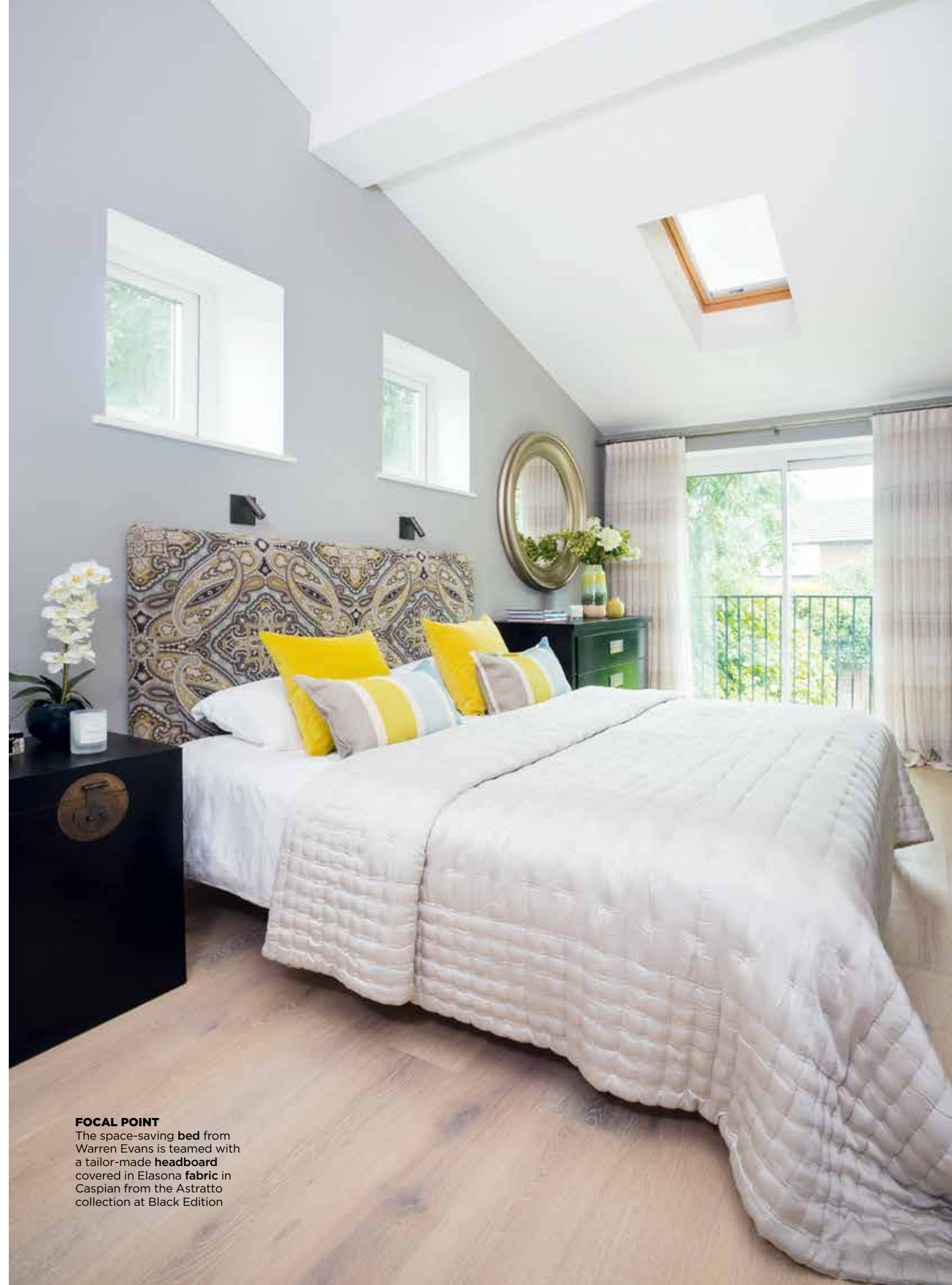
THE PROPERTY

A four-bedroom, detached 1960s house in north London

JULIA LOVES

Shopping at Wayfair
The colour chartreuse
60 Minute Makeover
Visiting bustling British towns
The designer Kit Kemp
Relaxing in her new master bedroom
The film *It's Complicated*

TOTAL PROJECT COST
£7,053



FOCAL POINT

The space-saving bed from Warren Evans is teamed with a tailor-made headboard covered in Elasona fabric in Caspian from the Astratto collection at Black Edition



LONG VIEW

Left Using French Grey – Dark from Little Greene on the walls keeps the bedroom feeling warm, while white on the ceiling emphasises the room's generous height. The colour scheme is completed with punchier accent shades brought in through accessories. **Flooring**, Wood & Beyond

THE COSTS AND CONTACTS

Decoration, including plastering and painting, wardrobe renovation and floor laying

£1,500

Chests of drawers

£1,079

Electrical work

£1,000

Flooring

£500

Bed

£500

Mirrors

£459

Headboard and fabric

£450

Lighting

£435

Curtains

£400

Bedside chests

£295

Armchair

£228

Ming stool

£108

Ladder

£99

TOTAL

£7,053

interior design Elena Romanova Interiors, 07990 560264, elenainteriors.co.uk

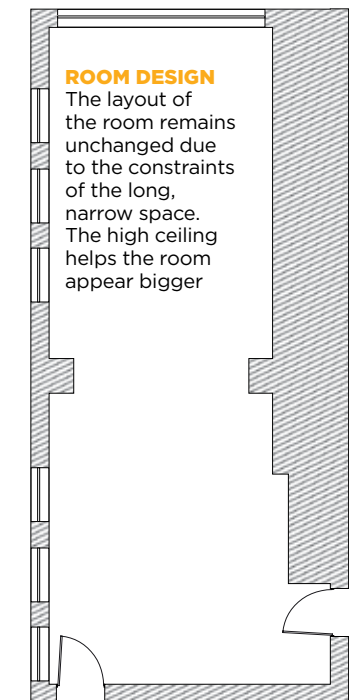
Plastering and decorating DP Art Decor, 07450 965804

Electrics Alex Bilodid, 07535 203876

Flooring Wood & Beyond

ROOM DESIGN

The layout of the room remains unchanged due to the constraints of the long, narrow space. The high ceiling helps the room appear bigger



STORAGE SPACE

Below Low drawers in a white finish, bought at Ikea, work alongside the existing wardrobes, which were revamped with white paint and handles from Zara

lose, the builder repaired the walls and revamped the wardrobe doors in the dressing area. 'I was going to replace them, but found they're no longer available in that size,' Julia explains. 'So I had them sanded down and repainted instead, which saved some money.' The yellowed flooring was then replaced with engineered wood in both the bedroom and dressing area, linking the two zones.

Aside from basic repairs, no structural work was required, so once the first fix was finished, including laying the new flooring, Julia and Elena could start piecing together the final scheme. As Julia didn't have a specific look in mind, the colour palette and style evolved over time, with Elena sending lots of photographs so that Julia could say what she liked. 'I loved a particular picture that showed a dark, classic-style piece of furniture combined with contemporary pieces and light fabrics,' says Julia.

For the walls, Elena showed Julia different shades of grey to gauge her reaction. 'We realised that I preferred those without a blue tone to them,' Julia remembers. 'Elena then persuaded me to introduce a bolder shade as well – I definitely needed an expert to make me colour confident.'

Having previously been attracted to muted tones inspired by Scandinavian interiors, Julia felt she was ready for a more sophisticated look, including both colour and pattern, so the new scheme includes pops of chartreuse and

blue alongside accessories in softer white and grey. The biggest hit of pattern comes in the form of a bespoke headboard, which Julia was initially set against, fearing that it might get dusty. Luckily, Elena convinced her it would make a fabulous feature. 'I fell in love with the fabric for cushions,' she explains. 'It's so lovely, that I realised it made sense to create more of a statement of it in a bigger area.' With just 2.5 metres of the material required for the headboard, the design added wow factor and proved to be an affordable addition. 'I couldn't imagine the bedroom without it now,' says Julia.

With her love for natural materials, Julia chose cotton for the headboard, a combination of linen and jute for the striped cushions, and then dressed the bed with a silk spread. For the window, she chose sheers made from linen, giving a simple, barely-there appearance.

Although creating the scheme was a straightforward and enjoyable process, the dimensions of the bedroom proved to be a challenge, as the original extension had a limited width in line with planning constraints, meaning it was difficult to move the position of furniture. It meant Julia had to update her old bed to a more compact design as, in the less-than-generous proportions of the room, she'd found herself knocking into it frequently. Improved lighting was also on the to-do list, including new fittings by

STYLISH COMBINATION

Right Contrasting with the white wardrobes in the dressing area, a chest of drawers from Lombok adds a classic look. **Mirror**, Laura Ashley. **Faux Hydrangea** and **Berry Bunch**, Oka. Find a similar vase at Habitat



the dressing room mirror and wall lights above the bed, instead of bedside lamps. The project cost a little more than Julia anticipated because extra plastering was needed but, although the work was disruptive, she was able to move into another bedroom for the duration of the makeover. Overall, the transformation took around 10 weeks, with the only delays occurring when waiting for furniture to be delivered, but the finished result makes the wait worthwhile. 'I'm so pleased I finally went ahead with the redesign, I just love it and it's now my favourite room in the house,' she says. 🍷

