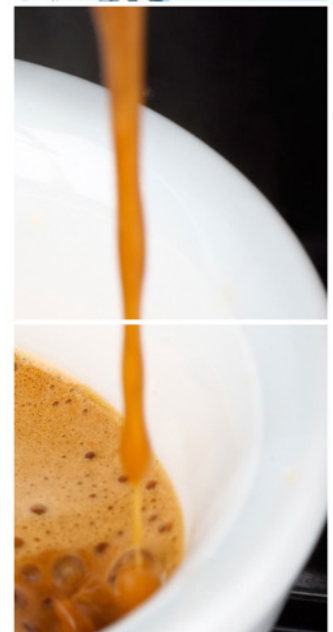


# Nio 20.3 [a] CoEx® bean2cup double bean



Product

Information



reddot award 2014  
winner

## Key features

## Options

- Visible beans & ingredient canisters
- CoEx® brewer & 2 whole bean grinders
- 10.4" high res full color touch screen
- Keyless cleaning & operation
- Aluminum housing
- LED illuminated ingredient canisters
- Separate hot water outlet

- Branding and/or customized colors
- On-screen communication options
- Connect.Me® [online monitoring]
- Base cabinet [with condiment trays]
- Increased capacities
- Waste guide & drain
- Table between base and machine

# Nio 20.3 [a] CoEx® bean2cup double bean



## Dimensions inch

Machine	h	23.6
	w	18.1
	d	21.3
Base Cabinet	h	33.5
	w	18.1
	d	21.3
Weight		77 lb

## Selections

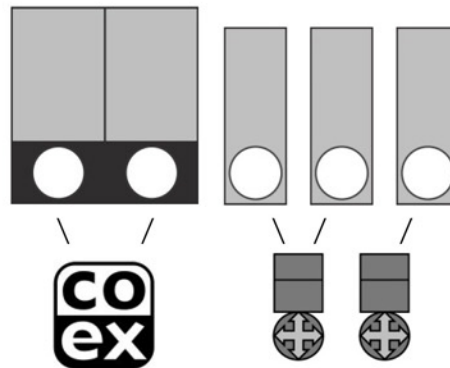
Whole Bean Coffee I	Hot Chocolate
Espresso	Chocomilk
Double Espresso	Espresschoc
Whole Bean Coffee II	Cappuccino I
Espresso II	Cappuccino II
Double Espresso II	Cafe au Lait
Latte Macchiato	Cafe Latte
Customized recipes**	Hot water
Chilled [sparkling] water **	

\*\* optional, ask for details & conditions

## Specifications

- MoVeC-ICEq® & USB upload
- 10,4" resolution : 800x600
- User Interface : DJD/Nio
- Menu structure or direct start
- Connection for payment systems [MDB]
- Cleaning pill entrance
- Multiple languages possible
- Cup-sensors
- Strength selections menus
- Number selection
- Boiler : 2x 0.4L
- Pressure : max 12 Bar

## Canisters



## Capacities

	#	lbs
Whole Bean Coffee I	1	2.43
Whole Bean Coffee II	2	2.43
Chocolate	3	2.40
Milktopping	4	2.40
French Vanilla	5	2.40

Waste bucket [accessible from outside] ≥ 100  
 Number of cups may vary depending on settings

## Connections

- 100-120 Volt AC
- 50/60 Hz
- 1200 Watt
- ¾" BSP [15 mm] mains
- waterfilter & waterlock recommended
- USB [outside access]
- LAN or Wifi

