

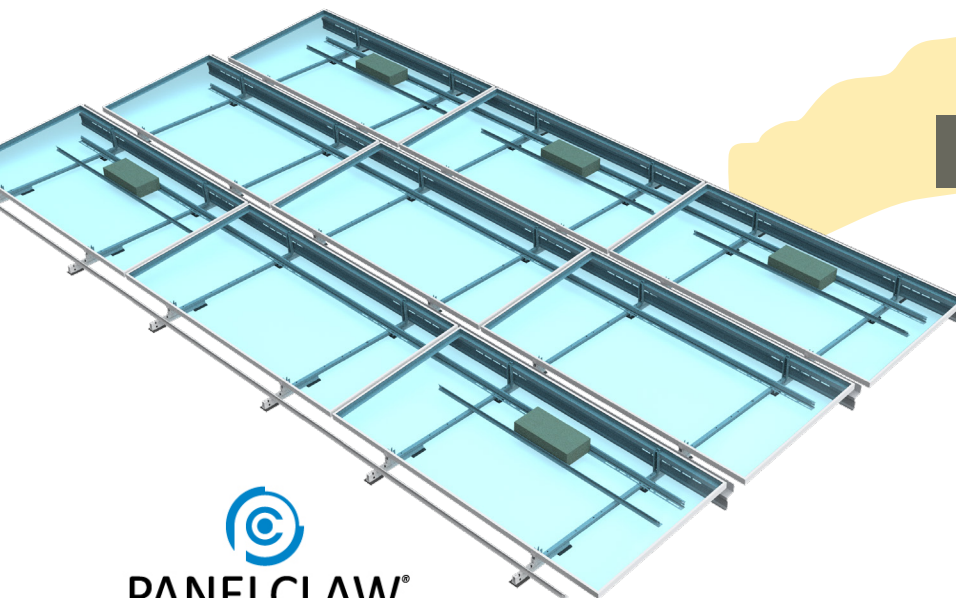
clawFR®

5



Flat Roof Racking Specialists

PanelClaw® is the only major racking provider in North America focused exclusively on flat roof racking. Our 11+ years of focus on flat roof result in a competitive advantage for our partners. No one knows more about flat roof racking than PanelClaw; no one delivers a more thoroughly tested and reliable platform; and no one matches our level of service. Our mission is to accelerate the deployment of flat roof PV and the best way to do this is to continue to lower its life-cycle cost while maintaining the highest levels of reliability. The clawFR platform is the result of this experience and commitment to flat roof.




PANELCLAW®

Engineered for Speed

- Single M6 bold hardware kit
- No tool module attachment method
- 90 degree single-module tilt-up feature
- Flexible order of operations installation process allows for optimized coordination of building trades on the roof
- Integrated roof protection pads
- 6.9"+ access ways between modules
- Only 1 ground lug required per array

SYSTEM COMPONENTS

Base



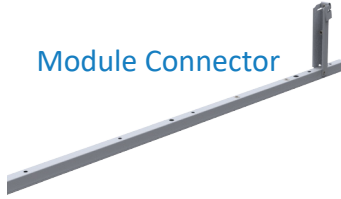
Universal Rail



M6 Bolt



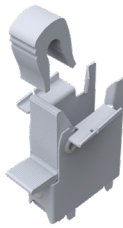
Module Connector



Deflector



Cam Bracket w/ Cam Claw



Applications

< 5° slope flat roofs (up to 7° possible w/engineering review)

Roof Type Compatibility

Membrane, tar and gravel, ballasted, BUR, concrete, asphalt (not compatible with metal roofs)

2 Shade Ratio Options

2.0:1 | 2.5:1

Platform Load

~ 2.3 - ~ 8.0 psf

Module Orientation

Landscape

Module Attachment

Airy point flange mounted

Basic Wind Speed

Up to 190 mph
(>190 mph by approval)

Wind Exposure Category

B and C (D required engineering review)

USGS Seismic Categories

A, B, C, D (others require engineering review)

Building Height

No building height limitations

Corrosion Resistance

ZAM coating provides 5x better resistance than G90

Warranty and Certifications

25 year warranty

ANSI/UL 2703-2015 Listed

System Fire Rating

Class A with Type 1 and Type 2 modules

Intelligent Component Design

- A single Ballast Rail part number covers all compatible 60 and 72 cell modules
- The Base does not change with module changes
- The wind deflector has 2 part numbers that cover all 72 cell module lengths
- The Module Connector and Deflector each have 2 part numbers have cover all compatible 72 cell modules

O&M Features

Construction designed specifically for O&M, and to assist providers

- Recessed Deflector allows for visual inspection of module connections and optimizer equipment
- ZAM coating with 5x better corrosion resistance than G90
- If mechanical roof attachments are needed, they are always placed in the North/South module gaps for simplified O&M inspection

Safety and Reliability

clawFR has been tested well beyond code requirements in the US. In addition to wind tunnel testing and ANSI/UL 2703-2015 listing, we have completed a battery of reliability and performance tests which can all be found at panelclaw.com.



PANELCLAW®

(978) 688.4900 | sales@panelclaw.com

panelclaw.com



Made in USA

clawFR®

5°