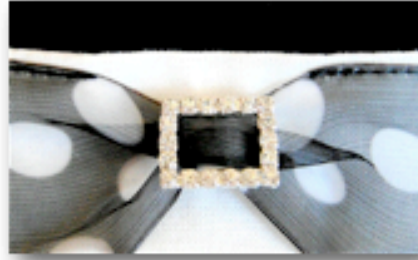


# Audrey Hepburn Girlie Apron

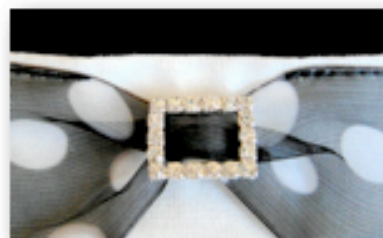


This celebrity apron has all the feminine touches of the legend herself. Little details like the sheer bordered bottom, the polka dots, and the rhinestone neckline accent will make you feel a star in the kitchen. Wash all the elements before making the apron to insure it won't shrink with later washings. We made two changes in the pattern: the straight neckline and a three inch straight cut trim on the hem. Serging the edge of the sheer fabric with the rolled hem feature, resulted in a ruffled look edge. We airbrushed the image on the apron but you can also paint it on with a brush or sponge.

## DIRECTIONS

**BEFORE PAINTING, ALWAYS WASH AND DRY FABRIC (WITHOUT FABRIC SOFTENER) AND COVER EXPOSED FABRIC TO PREVENT ACCIDENTAL OVER SPRAY DURING PAINTING.**

1. Cut out all pattern pieces being sure to cut straight across the top of the apron. Trace fabric to create a matching interfacing.
2. Press a soft crease in the apron from the neckline to the hem to mark the center.
3. Prepare the fabric for painting by slipping cardboard under it. Spray adhesive on the back of the stencil then center it on the bib portion of the apron. The top of the image should be about three inches down from the top edge of the fabric.



*Step # 6*


4. Spray the stencil. When paint is completely dry, remove the stencil. With a protective cloth over the ironing board, press the back of the painted fabric for 30-45 seconds to set the paint.
5. Sew the facing onto the top of the apron. Press the facing to the wrong side.
6. Thread the ribbon through the rhinestone buckle. Pull the ribbon taught across the top of the apron and pin in place. Sew both edges of the ribbon to the apron stopping about one inch from the center.
7. Sew the sheer fabric across the bottom of the apron and finish off the seam with zig zag stitching or a serger.
8. Align the ribbon to the seam where the sheer and white fabrics meet and pin in place. Stitch across both ribbon edges.
9. Using a rolled hem on the serger machine, stitch across the raw edge of the sheer fabric. If you don't have a serger you can use a close zig zag stitch or some other decorative stitch.
10. Continue making the apron per the pattern instructions.

Note:

Not all paints can be set in the same way. Be sure to read the directions on the paint you choose.



*Steps # 8 & 9*



### What You'll Need

- 2 yds. white fabric
- 1/3 yd. sheer fabric
- 1 1/3 yard polka dot ribbon 1.5" wide
- rhinestone buckle
- sewing notions
- See & Sew Apron Pattern B5125
- painters tape
- paper towels
- airbrush kit
- Black Tie paint color pouch
- stencil
- repositionable adhesive stencil spray

### Where We Bought it /What We Paid

- white fabric - Joann's \$6
- Sheer fabric - JoAnn's \$1
- ribbon - JoAnn's \$1
- apron pattern - JoAnn's \$3
- air brush tools and paint - see top of page
- Hepburn stencil - [Stencil Library](#) \$15
- rhinestone buckle - local craft shop \$1
- stencil adhesive spray JoAnn's \$7

*These instructions are static screenshots of our web page and contain dead links. Return to our website to click on functional links.*

*www.Domestic-Divaonline.com*

© Instructions and photos are offered for personal use only, not for resale. All are the property and the copyright of Domestic Diva Online, 2011.