

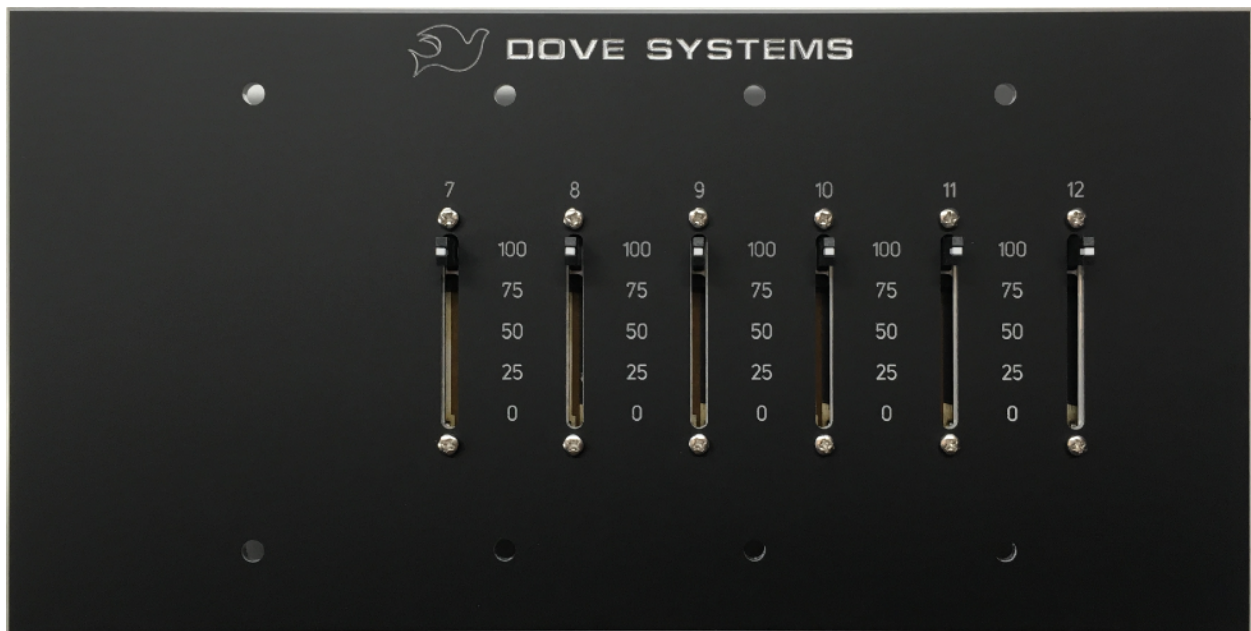


DOVE SYSTEMS

HLC-Ex Addendum

House Light Control Channel Extender

Installation Notes



Introduction

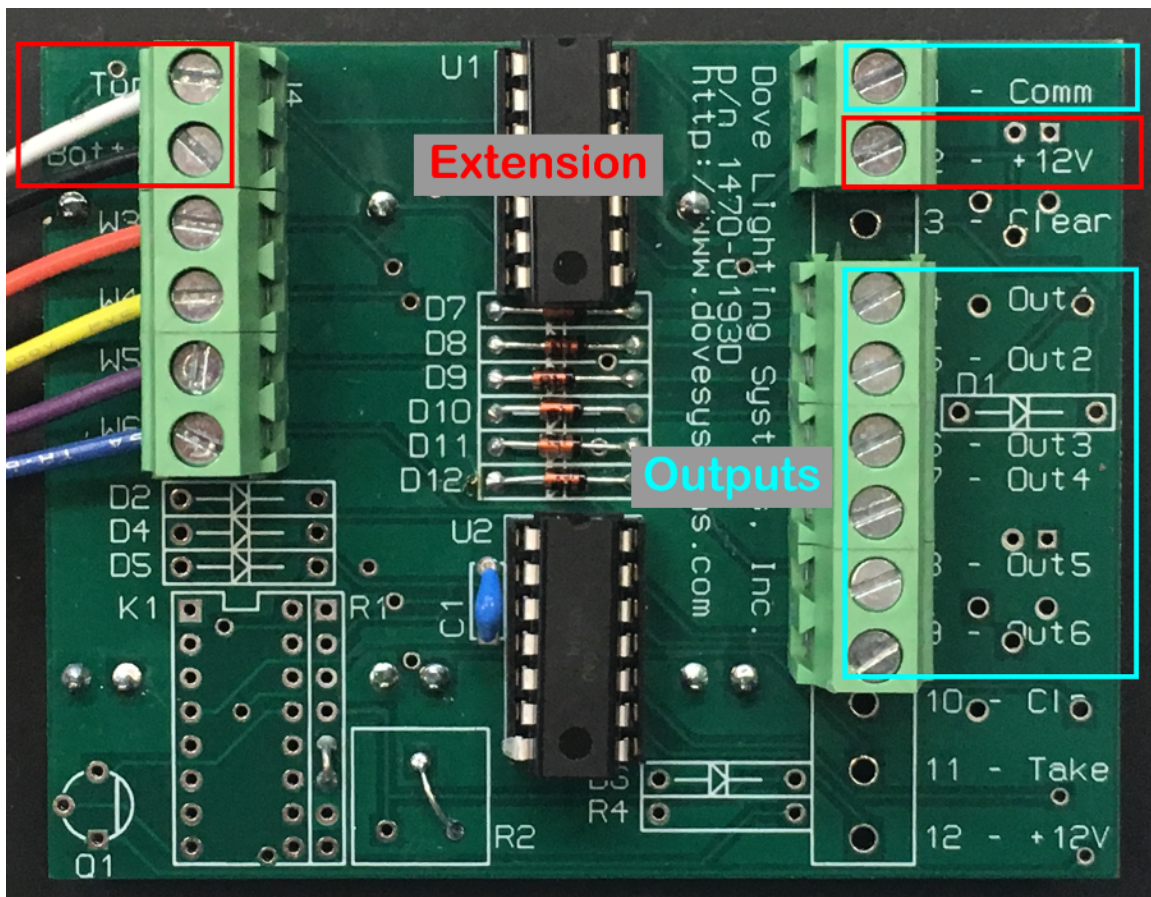
The HLC-Ex is an add-on to the HLC Series House Light Controllers which add 6 additional channels to another HLC unit using its Master channel and power via a three-wire connection. It is intended to be mounted in a standard 4-Gang electrical box near its “Master” HLC. Multiple HLC-Ex units may be used for systems in excess of 12 channels. This addendum is meant to be used in conjunction with the original HLC Owner’s Manual.

The starting channel on the front panel is specified when ordering. For example, the panel pictured above is an HLC-E7 and would be used with an HLC-6.

Wiring Connections

Three wires must be used to connect the Top, Bottom, and +12V terminals on the HLC-x and HLC-Ex boards. Take care when connecting the Top and Bottom signals not to dislodge the existing connections to the sliders. The extension board's outputs work just like the outputs of the "Master" HLC board in that the Comm connection is also needed to drive the dimmers, please see the main manual for details.

The Clear and Take connections are not used on the HLC-Ex.



Example 8 channel dimmer system wiring with three control stations: The HLC-2 & HLC-E3 control all 8 channels. Taking control at the HLC-4 or HLC-0 stations will control channels 1-4 and turn off 5-8. The HLC-0 station is a remote preset application where the levels on HLC-4 are used:

