



# **An Overview of the Latest Climate Science for Policymakers**

**First published February 2019  
Updated November 2019**

## **An Overview of the Latest Climate Science for Policymakers**

### **Summary**

This paper provides a brief overview of the latest Climate Science, compiled by the ICSF for the information of the Irish Government in the context of its *“Climate Action Plan 2019 to Tackle Climate Breakdown”* and many other interested stakeholders in Ireland and abroad.

It is a compilation of the latest climate research and observations by independent scientists worldwide. The summary does not claim to be scientifically rigorous in every aspect, but hopefully encapsulates the key facts and trends in this rapidly-evolving field.

The latest research and observations indicate that while there is an anthropogenic Green-House Gas (GHG) influence, it is considerably less than depicted by the IPCC. More is also now understood about solar and other natural climate influences, weather events and many physical observations.

Extrapolation of current observations would indicate only about 1°C further temperature rise and about 25cm sea level rise by 2100, neither of which point to a “climate emergency”, but which do however suggest ongoing prudent mitigation and adaptation.

Therefore the ICSF proposes that climate policy should be based on ongoing energy innovation, efficiency and conservation measures compatible with continued growth and well-being, rather than imposing unnecessary economically or socially-regressive measures.

### **The Irish Climate Science Forum**

The Irish Climate Science Forum (ICSF) was founded in 2016 and is composed of a small group of Irish scientists, engineers and other professions. The ICSF is committed to identifying and disseminating the latest climate science. Its members are characterized by an open and enquiring mind on the science, driven by the imperative of objectivity.

The ICSF seeks a sustainable future for Ireland and its people. It aims to better inform national energy and climate-related policymaking in the best long-term national interest. It therefore arranges invited lectures by distinguished international climate scientists. It also engages in public consultations and has formed links with like-minded groups globally.

ICSF operates to a very modest budget and is entirely self-funded. It has no vested interests other than disseminating the latest climate science in the best public interest. To learn more about the ICSF, please see [www.ICSF.ie](http://www.ICSF.ie).

©Jim O’Brien, Chair, ICSF.

Contact: [jimbriencsr@gmail.com](mailto:jimbriencsr@gmail.com).

## **An Overview of the Latest Climate Science for Policymakers**

### **List of Contents:**

<b>Section</b>	<b>Content</b>	<b>Page</b>
<b>1</b>	<b>Evidence that the IPCC Models are “Overheated”</b>	<b>4</b>
1.1	Global Temperature Trends lie below IPCC projections	4
1.2	Recent Research shows low Climate Sensitivity	4
1.3	Agricultural Emissions have low GHG Influence	6
1.4	Satellite-Era Temperatures Indicate Natural Variability and Gradual Warming	6
1.5	Sea Surface Temperatures exhibit non-GHG Influences	7
1.6	Evidence of Discrepancies in Temperature Databases	8
1.7	Significant Deficiencies evident in 3 recent IPCC Special Reports	9
<b>2</b>	<b>Climate Observations do not indicate a Planetary Crisis</b>	<b>10</b>
2.1	Arctic Sea Ice has been relatively stable since 2007	10
2.2	Greenland also continues to be relatively stable	11
2.3	The Antarctic has regional variations, but is stable overall	12
2.4	Global Sea Levels continue to rise at about 1-3mm/year	13
2.5	Recent “Extreme” Weather Events are not unprecedented, nor is there a proven link with anthropogenic GHG emissions	14
	2.5.1 Wild Fires	14
	2.5.2 Droughts	15
	2.5.3 Hurricanes and Tornados	17
	2.5.4 Floods	18
	2.5.5 Coral Bleaching	19
	2.5.6 Heatwaves	19
	2.5.7 Irish Weather Events	21
<b>3</b>	<b>Understanding Solar and other Natural Influences</b>	<b>23</b>
3.1	Influence of the Sun, Cosmic Rays on Clouds and Climate	23
3.2	Possible Influence of Interplanetary Oscillations on Climate	24
3.3	Longer term Solar Influence and possible Global Cooling	25
<b>4</b>	<b>Lessons from Paleoclimate, recent Millennia and Centuries</b>	<b>27</b>
4.1	Warming and Cooling Episodes in Paleoclimate	27
4.2	Warming and Cooling Episodes in recent Millennia	29
4.3	Warming and Cooling Episodes in recent Centuries	30
<b>5</b>	<b>Increasing CO<sub>2</sub> Levels are beneficial to Greening of the Planet</b>	<b>31</b>
	<b>Appendix: List of References</b>	<b>32</b>

**1. Evidence that the IPCC Models are “Overheated”**

**1.1. Global Temperature Trends continue below IPCC Model Predictions**

The IPCC (Intergovernmental Panel on Climate Change) Fifth Assessment Report (AR5) [Ref 1] was published in 2013, followed by its Special Report SR1.5 [97] in 2018. Since 2000, actual tropical mid-tropospheric temperature trends, even with the peak of the naturally-occurring 2015/17 El Niño, are lying well below the prediction of the IPCC models [2,3], as illustrated in Figure 1. Tropical mid-tropospheric temperatures are referenced in that this is the region where the GHG warming “hot-spot” should have occurred according the IPCC global climate models. Both facts demonstrate that the IPCC models are “overheated”.

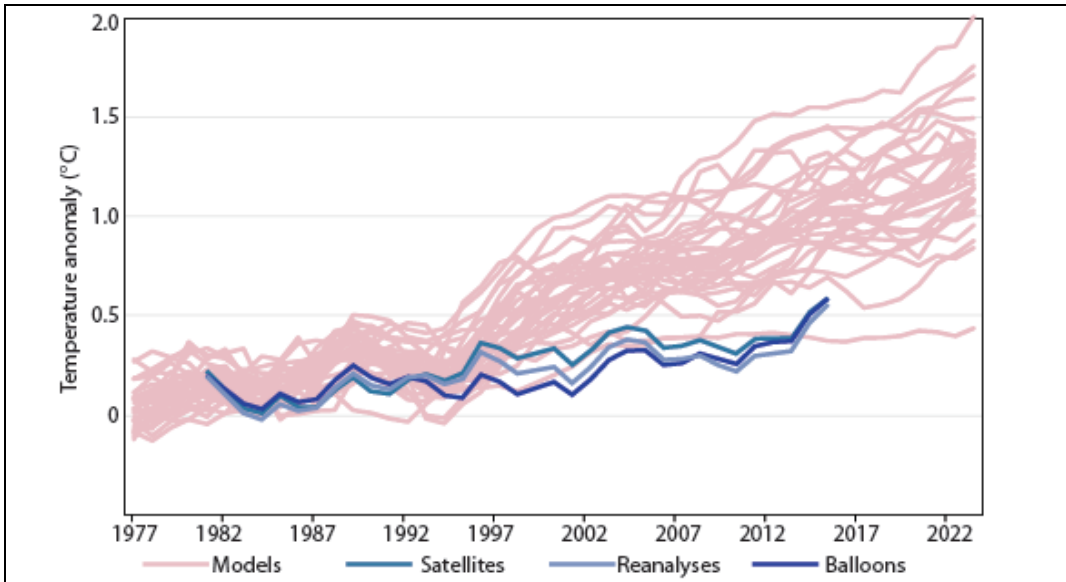


Figure 1: This graph demonstrates that tropical mid-troposphere temperatures, based on various observational datasets (in blue), now lie about 0.5°C below the mean of all IPCC AR5 model projections (in pink), and the divergence continues to widen. Source: Dr John Christy [2,87].

**1.2. Recent Research shows lower Climate Sensitivity than estimated by IPCC**

The “Climate Sensitivity” is the amount of global warming in degrees Celsius that is expected to occur from a doubling of atmospheric Carbon Dioxide (CO<sub>2</sub>). The IPCC AR5 climate models calculated that this value is somewhere in the range 1.5°C to 4.5°C, which range the IPCC has not been able to narrow over the last 40 years.

However recent independent research [4] has produced successively lower limits of climate sensitivity, as in Figures 2 and 3. The current view is that climate sensitivity due to GHG (Green House Gases) is only about 1°C or less. In particular, the 2016 paper by Prof Ray Bates [5] demonstrates climate sensitivity of the order of 1°C, similar to that previously estimated by Lindzen and Choi in 2011 [7,26]. Serious questions are also beginning to arise in the scientific literature [6,8,9] about the tuning procedures for the sub-grid scale physical processes used in the IPCC Global Climate Models. The average global temperature rise since 1880 to now is 1°C, though IPCC AR5 did not attribute all warming to GHGs. Extrapolation of observations (as in Figure 1 above) would indicate less than 1°C further rise by 2100.

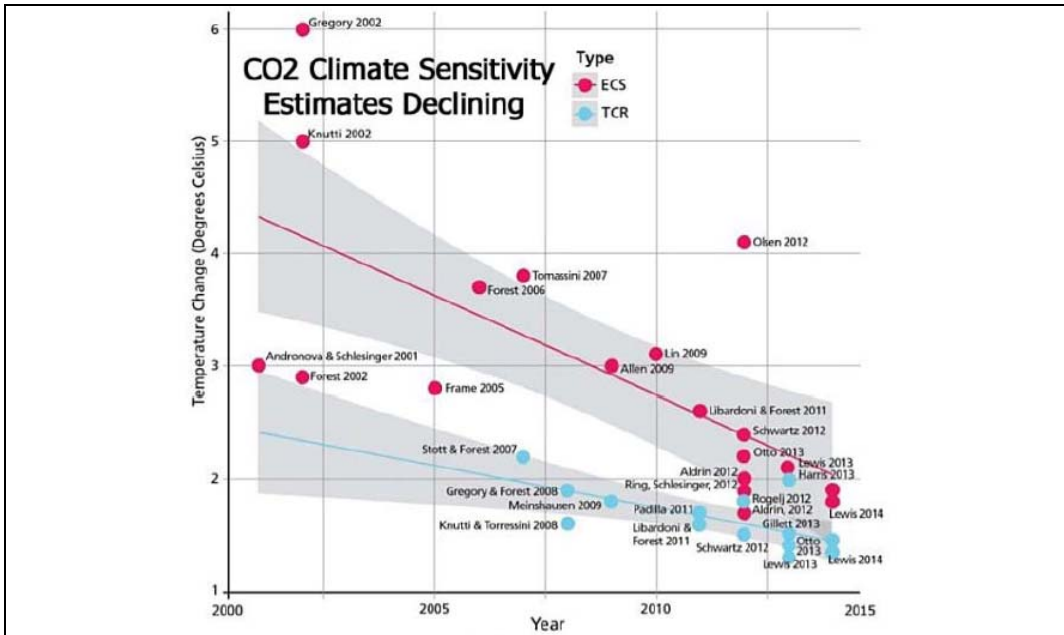


Figure 2: Compilation of published Transient Climate Response (TCR) and Equilibrium Climate Sensitivity (ECS) values to atmospheric CO<sub>2</sub> doubling. Source [72].

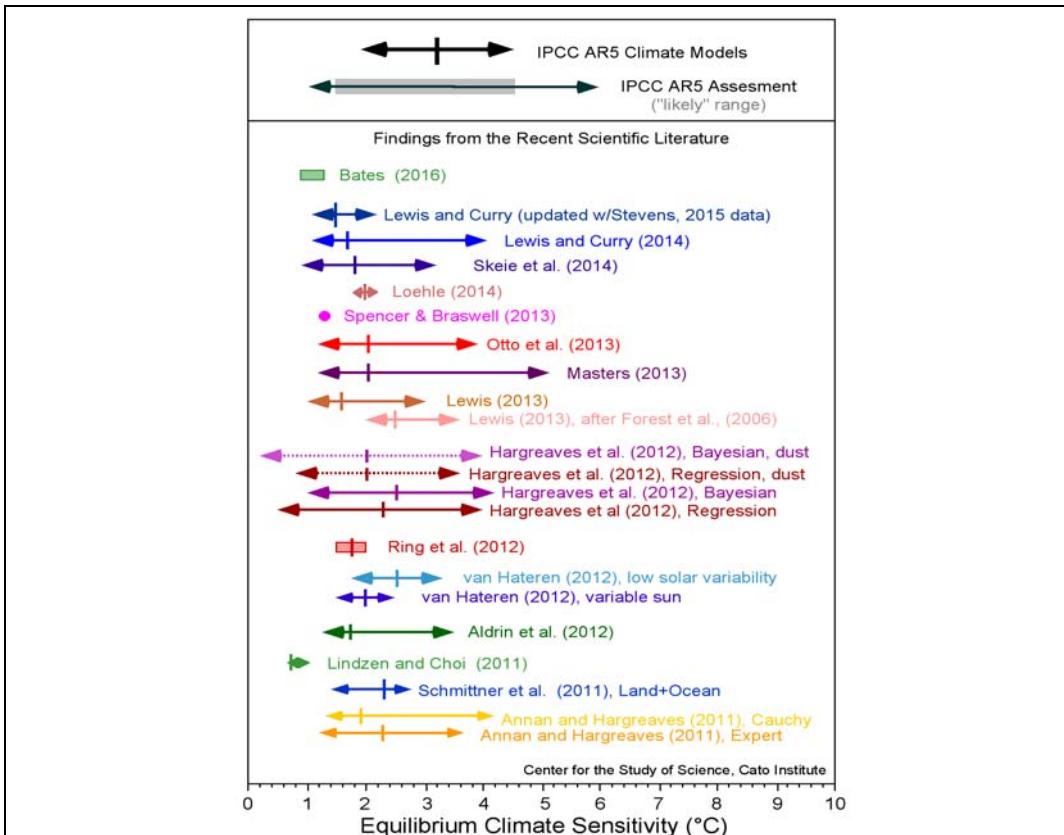


Figure 3: A more recent comparative chart of estimated Equilibrium Climate Sensitivity (ECS) for doubling of atmospheric CO<sub>2</sub>, illustrating those of Lindzen and Choi (2011) and Bates (2016) being in the region of only 1°C. Source [86].

In October 2016, an article by Voosen [11] appeared in Science Magazine under the title “Climate scientists open up their black boxes to scrutiny”. This has been followed by an article with lead author Hourdin [10] in the March 2017 issue of the Bulletin of the American Meteorological Society entitled “The art and science of climate model tuning”. Until recently, it had been assumed that the climate sensitivity given by the GCMs was determined by the physics of the models, but it now appears that these were tuned by the modelers to give a climate sensitivity that lay in “an anticipated acceptable range”. Prof Ray Bates has further described these modeling deficiencies in SR1.5 in his recent paper [98].

**1.3. Agricultural Emissions have lower GHG influence than estimated by IPCC**

Another significant update in climate since AR5 is that the actual GHG influence of Methane (CH<sub>4</sub>) and Nitrous Oxide (N<sub>2</sub>O), typical agricultural emissions, is significantly less than estimated by IPCC [12,13], another significant error in its modelling.

This is because, in the real life situation, the absorption bands of both CH<sub>4</sub> and N<sub>2</sub>O overlap with those of the dominant greenhouse gases, water vapour (H<sub>2</sub>O) and Carbon Dioxide (CO<sub>2</sub>). This limits how much radiative forcing can be caused by CH<sub>4</sub> and N<sub>2</sub>O, as shown in Figure 4 below. Accordingly, both CH<sub>4</sub> and N<sub>2</sub>O make miniscule contributions to radiative forcing (and hence on global warming) in comparison to H<sub>2</sub>O and CO<sub>2</sub>. This key new research is shortly to be published by Professors William Happer and William van Wijngaarden [99].

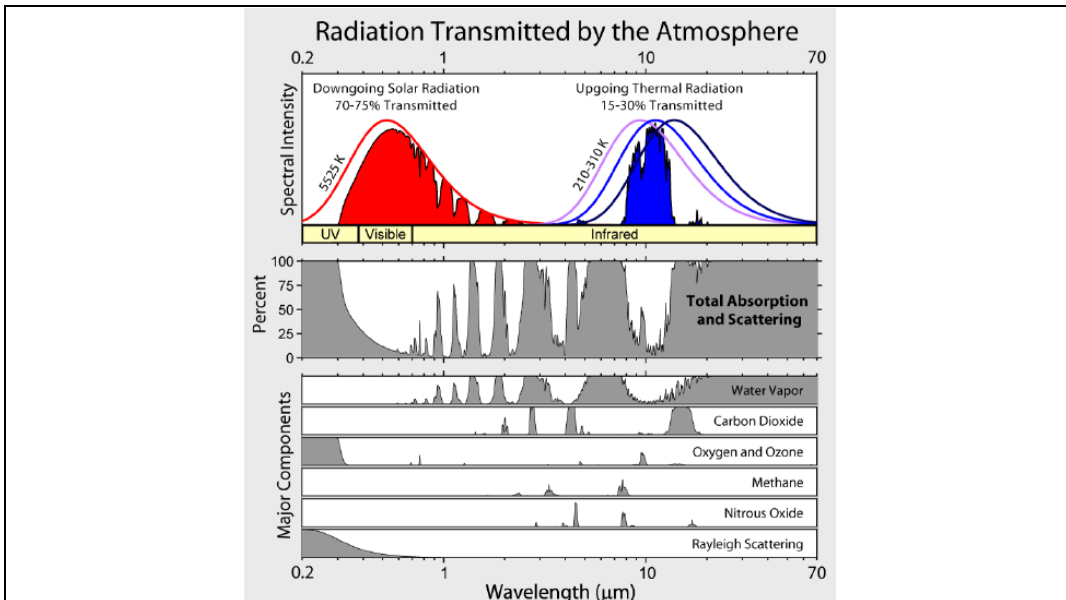


Figure 4: This graph demonstrates the overlapping absorption bands of methane and nitrous oxide compared to CO<sub>2</sub> and water vapour. Source [12].

**1.4. Satellite-Era Temperatures Indicate Natural Variability and Gradual Warming**

Monthly satellite observations since 1979 (see Figure 5) confirm a high degree of natural variability, most prominently in the naturally-occurring El Niño peaks [14,15] of 1998 and 2015/16. These observations, now spanning 40 years, indicate average warming of just under 0.1°C per decade. Extrapolation of this trend would indicate less than 1°C further warming by 2100, again providing no evidence of a “climate emergency”.

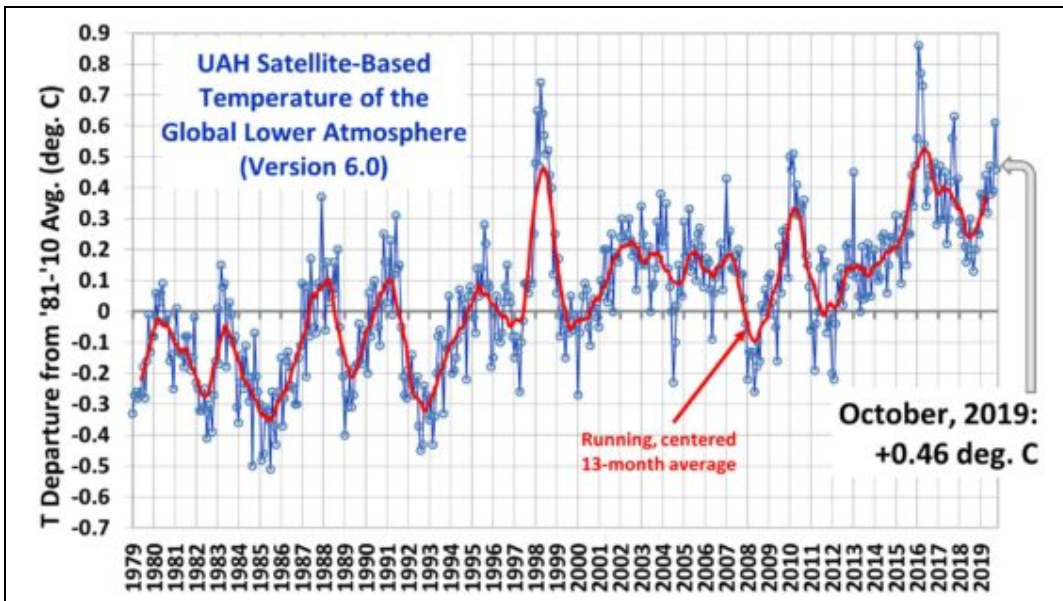


Figure 5: Global average tropospheric temperatures, based on satellite data since 1979, illustrating marked natural variability and effectively a temperature hiatus during the last 20 years since the El Niño peak of 1998 until after to the recent El Niño of 2015/16. Source [15].

**1.5. Sea Surface Temperatures since 1850 illustrate non-GHG influence**

Sea Surface Temperatures (SST) for the period 1850-2018 are based on thousands of measurements across the globe (the sea being 71% of the global surface).

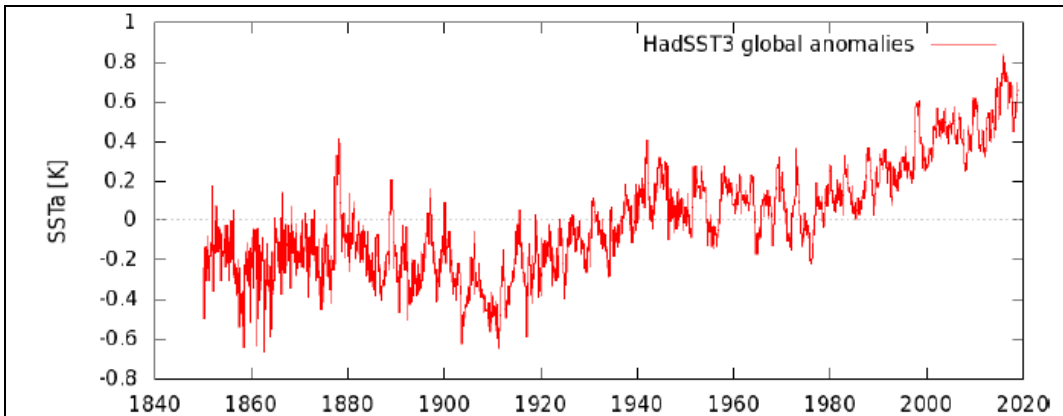


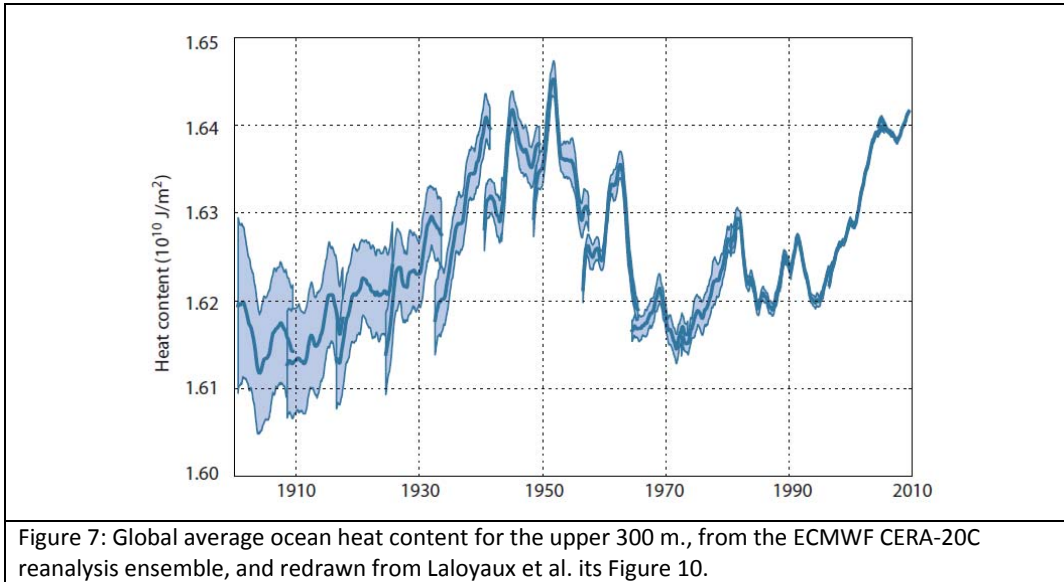
Figure 6: HadSST3 global temperature anomalies from 1850 to 2018. Source [Royal Netherlands Meteorological Institute/Global Temperatures (Ocean only)]

The graph of SST (Figure 6) shows the following points clearly:

- The spike in warming in late 2015/early 2016 has given way to a period of cooling; monthly SST anomalies are now about 0.2°C below the 2015-2016 El Niño spike.
- The average SST for the period 2000-2014 (before the onset of the El Niño) was only about 0.4°C above the average for the period 1936-1950; this very slow rate of warming is entirely consistent with low climate sensitivity, and again is not indicative of any “climate emergency”.



- Looking at the 20<sup>th</sup> century as a whole, the period of strongest warming was 1910-1945, during which period the global SST increased by about 0.6°C. This was preceded by a cooling period from 1880 to 1910, with another cooling from 1945 to 1978. These varying temperature trends clearly demonstrate influences (namely solar and natural) other than anthropogenic greenhouse gas influence.



Recently, results of an extensive ocean data study carried out at the 34-nation (including Ireland) European Centre for Medium Range Weather Forecasts (ECMWF) have been published [27,28]. The study involved rescuing over two million station-days of surface data and importing them into the most up-to-date data-assimilation system. The results for the upper ocean heat content (OHC, top 300m) for the period 1900–2010 are shown in Figure 7. This figure shows that the OHC (0-300m) reached values during the period 1945–1955 that exceed any reached during the period 2000–2010. These results clearly suggest the possibility that the natural variability of OHC (0-300m), and hence of the closely related global SST, is greater than had previously been estimated.

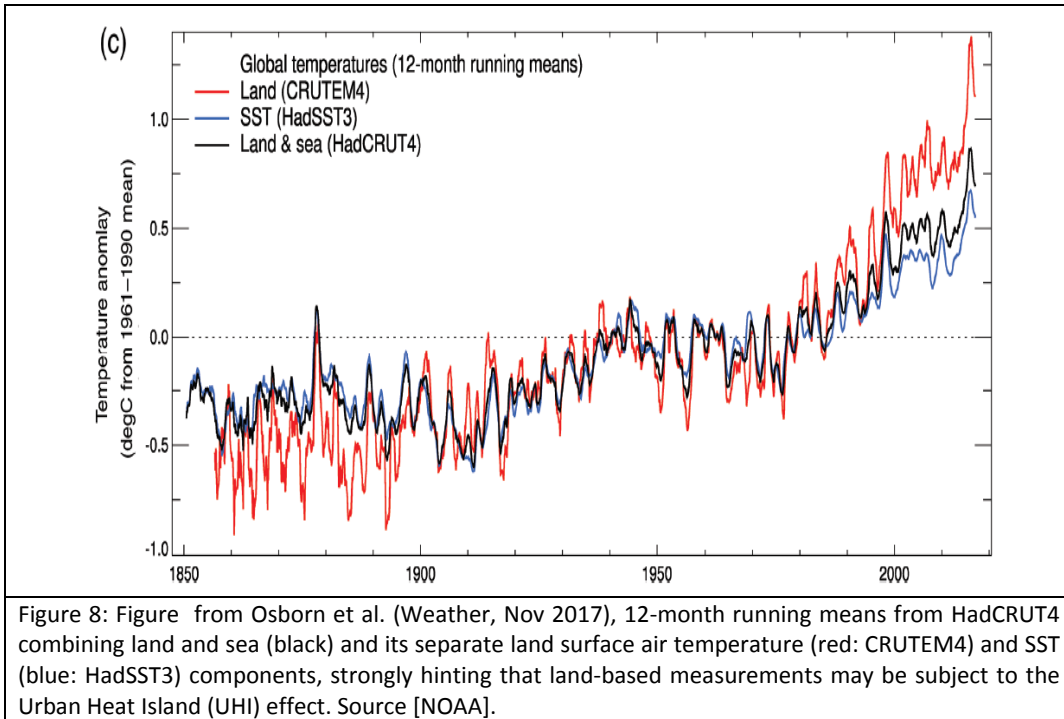
### 1.6. There is Evidence of Discrepancies in Global Temperature Databases

There are questions over the accuracy of adjustments that have been applied to global land temperature datasets, some of which have tended to introduce spurious warming effects [16,17,18,19,41]. These were again investigated in a paper by Christy, Spencer, et al [87], indicating a lower global warming trend of only  $+0.10 \pm 0.03^\circ\text{C}/\text{decade}$ .

There is also likely significant warming bias introduced by the Urban Heat Island (UHI) effect, the most plausible explanation for recent apparently elevated land temperatures (Figure 8). All datasets spiked during 2015/2016 due to the powerful El Niño, leading to spurious “hottest year ever” claims, with a declining temperature trend since then.

A recent report by Wallace, D’Aleo and Idso [18] tested if the NOAA, NASA and Hadley CRU Surface Temperature datasets provided sufficiently credible estimates of global average temperatures to be relied upon for climate modeling and policy analysis purposes.





In this research report, the most important surface data adjustment issues were identified and past changes in the previously reported historical data were quantified. It was found that each new version of Global Average Surface Temperature (GAST) has nearly always exhibited a steeper warming linear trend over its entire history. And, it was nearly always accomplished by systematically removing the previously existing cyclical temperature pattern. This was true for all three entities providing GAST data measurement, NOAA, NASA and Hadley CRU.

The conclusive findings of this research were that the three GAST data sets are not a valid representation of reality. In fact, the magnitude of their historical data adjustments, that removed their cyclical temperature patterns, is inconsistent with published and credible US and other temperature data. Another audit of HadCRUT4 data by Maclean found multiple database errors that seriously undermined their reliable use in IPCC climate modeling.

### 1.7 Significant Deficiencies evident in the three recent IPCC Special Reports

In 2018, IPCC published a Special Report on the impacts of global warming of 1.5°C, quoting an increased sense of planetary emergency in the absence of drastic mitigation. Prof Ray Bates found that this Report to be deficient scientifically in ignoring research and observation since AR5, and in particular in its climate models [98].

Deficiencies were also evident in its mid-2019 Special Report on Land-Use. The third of these Special IPCC Reports on Oceans was based on a paper that was found to be statistically flawed, and which had to be subsequently retracted [103].

All three Special Reports have not bolstered confidence in IPCC's scientific reputation.

## 2. Climate Observations do not indicate a Planetary Crisis

### 2.1 Arctic Sea Ice continues to be relatively stable since 2007

Reducing Arctic sea ice extent is viewed by many as the clearest demonstrating of global warming, with predictions of its demise before 2050. Arctic sea-ice extent and volume have declined since 1979, but are effectively at a standstill since 2007 (Figures 9 & 10).

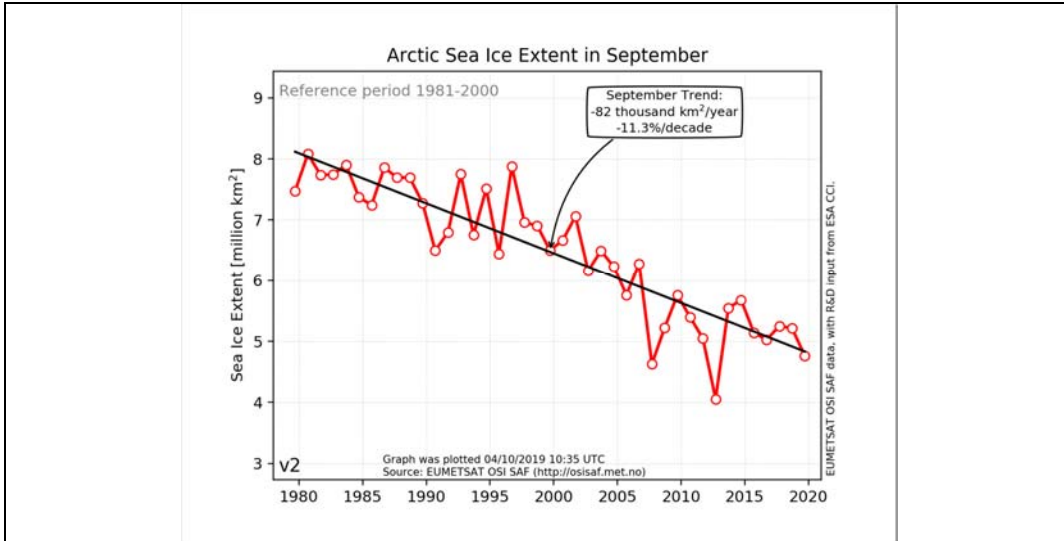


Figure 9: Arctic Sea Ice September low extents since satellite records began in 1979, demonstrating stabilisation since 2007 [Source: DMI, [http://ocean.dmi.dk/arctic/icecover\\_30y.uk.php](http://ocean.dmi.dk/arctic/icecover_30y.uk.php)].

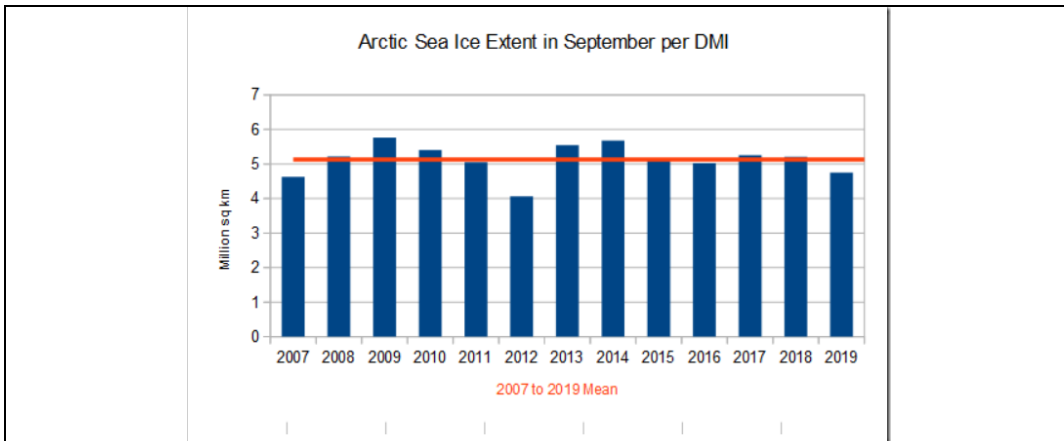


Fig 10: Arctic sea ice extent in September, again showing stabilisation since 2007, source: [http://ocean.dmi.dk/arctic/sie\\_monthmean.uk.php](http://ocean.dmi.dk/arctic/sie_monthmean.uk.php)

Recent studies have interpolated a similar warmer Arctic temperature anomaly in the 1930-1940s, followed by cooler anomalies from 1945 to 1978, during which two episodes Arctic sea ice is inferred to have shrunk and grown again respectively (Figure 11). It is notable that the current shrinking began in 1979 coincident with the advent of satellite measurement. On a short-term basis, there can be significant short-term temperature anomalies in the Arctic; the recent anomalies are not unprecedented in that similar occurred in 1976 [32].

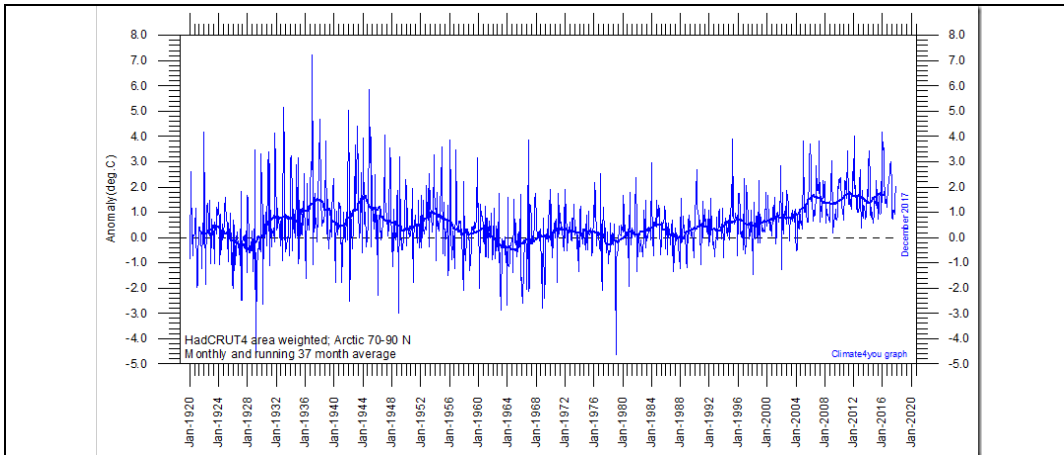


Figure 11: Recent arctic temperature anomalies are similar to those of the 1930-40s, the cycle being likely connected with the AMO [Source: <http://climate4you.com/>]

Recent reports by Susan Crockford [30,31] indicate that global polar bear numbers have been stable or risen slightly since 2005. Abundant prey and adequate sea ice in spring and early summer since 2007 appear to explain why global polar bear numbers have not declined, as might have been expected as a result of low summer sea ice levels. Some studies show bears are lighter in weight than they were in the 1980s, but none showed an increase in the number of individuals starving to death or too thin to reproduce.

## 2.2 Greenland also continues to be relatively stable

Not unsurprisingly, Greenland shows a similar historical temperature trend, with a previous warmer period in the 1930-1940s (Figure 12), again the last time the AMO was in warm phase, as it presently is.

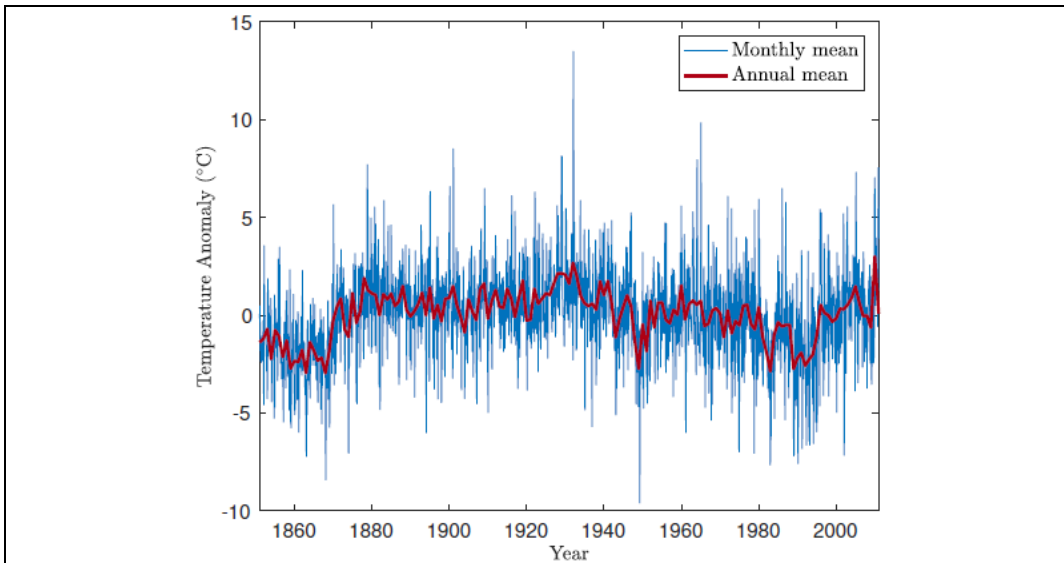


Figure 12: Observed fluctuations in Greenland's temperatures since 1851, based on re-analysis by KNMI, showing current temperatures to be similar to those as far back as the 1880s. [Source: <https://www.the-cryosphere.net/12/39/2018/tc-12-39-2018-supplement.pdf>].

### 2.3 The Antarctic exhibits some regional variations, but is also relatively stable

IPCC AR5 indicated that while there had been some recent loss of sea ice from the Antarctic Peninsula and the Amundsen Sea Sector of the East Antarctic, however the annual mean Antarctic sea ice had increased at a rate of 1.2%-1.8% per decade between 1979 and 2012.

More recent research indicates that the Antarctic went through a 1,900-year cooling trend before slight warming in the last century. Ice core reconstruction of Antarctic temperatures over the past two millennia confirmed a significant cooling trend from 0 to 1900 AD across all Antarctic regions where records extend back into the 1st millennium, with the exception of the Wilkes Land coast and Weddell Sea coast regions (Figure 13). The study [33] also found that the warmest period occurred between 300 and 1000 AD, and the coldest interval occurred from 1200 to 1900 AD, suggesting that today's slightly warmer Antarctic temperatures are not unprecedented. The warming might be related to activity of the 91 geothermal hotspots recently discovered under the West Antarctic ice.

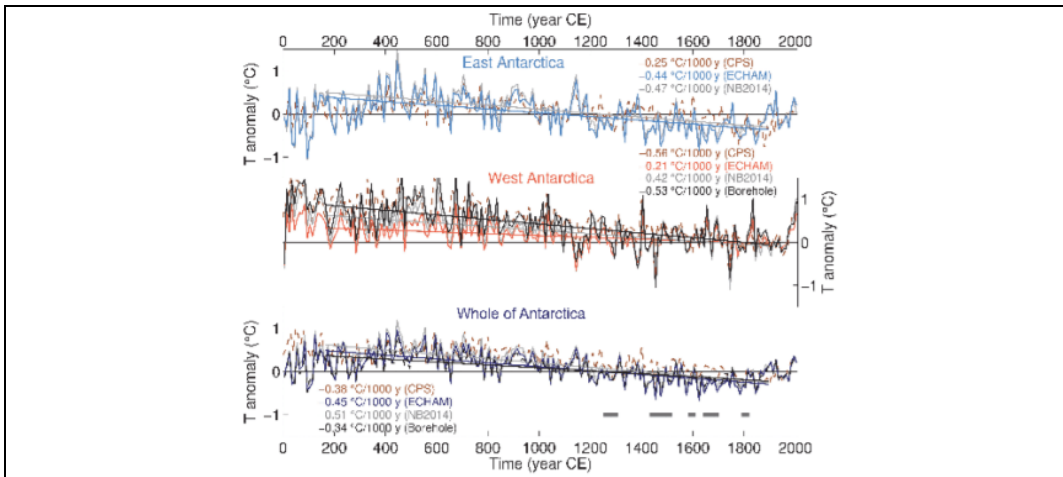


Figure 13: A 2000-year reconstruction of Antarctic temperatures shows a warm period from 300-1000AD, and a cool period from 1200-1900AD; the current slight warming is not unprecedented. [Source: [www.clim-past.net/13/1609/2017/cp-13-1609-2017.pdf](http://www.clim-past.net/13/1609/2017/cp-13-1609-2017.pdf)]

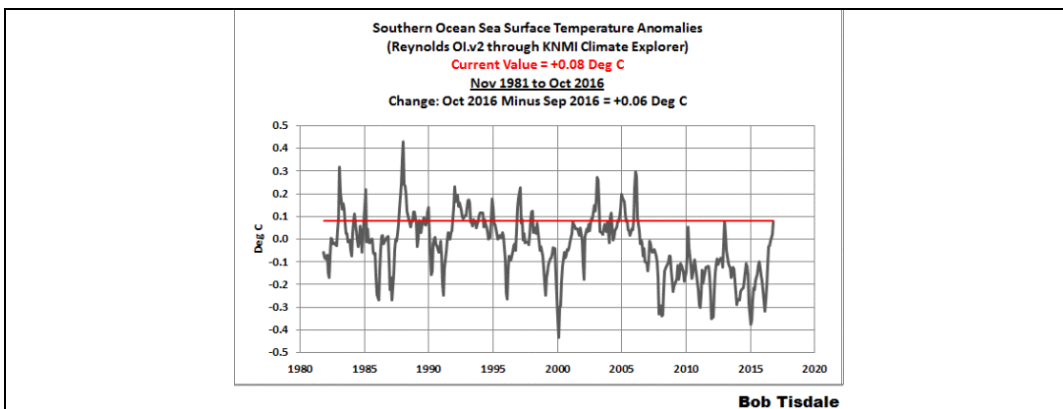


Figure 14: Southern Ocean SSTs have been dropping since 1980, and currently are below the long term mean. <https://bobtisdale.wordpress.com/2016/11/08/october-2016-sea-surface-temperature-sst-anomaly-update/>.

A recent paper [89] claimed that the Antarctic Ice Sheet had lost 2.7 trillion tonnes of ice between 1992 and 2017, however this represents only 0.01% of its total ice mass and therefore lies within the bounds of natural variability. It is also notable that Southern Ocean SSTs have been cooling since 1980 (Figure 14).

**2.4. Global Sea Levels continue to rise at about 1-3mm/year**

Global sea level has been rising gradually for thousands of years (refer Figure 38). The key issue is whether the rate of global mean sea level rise (GMSLR) is accelerating owing to anthropogenic global warming. However Gregory [38] et al. (2013) found that “the rate of GMSLR was not much greater during the last 50 years than during the 20<sup>th</sup> century as a whole, despite the increasing anthropogenic forcing”.

Data from tide gauges from all over the world since the Little Ice Age (which ended about 1850) suggest an average global sea-level increase of 1-2mm a year, while satellite records demonstrate a rise of 3-3.4mm a year, the difference between the two sets of measurements being unexplained. At local levels, higher or lower variances can occur due to ongoing tectonic land level shifts. There also appears to be some correlation with solar cycles [34,35,36,37].

While a recent paper by Nerem et al [84] detects a minor acceleration in the last 25 years, most studies exhibit no significant acceleration of sea-level rise, contradicting claims that rapid sea-level rise could occur this century (Figure 15). GMSL is therefore unlikely to rise by more than 25cm by 2100, again confirming the lack of any “climate emergency”.

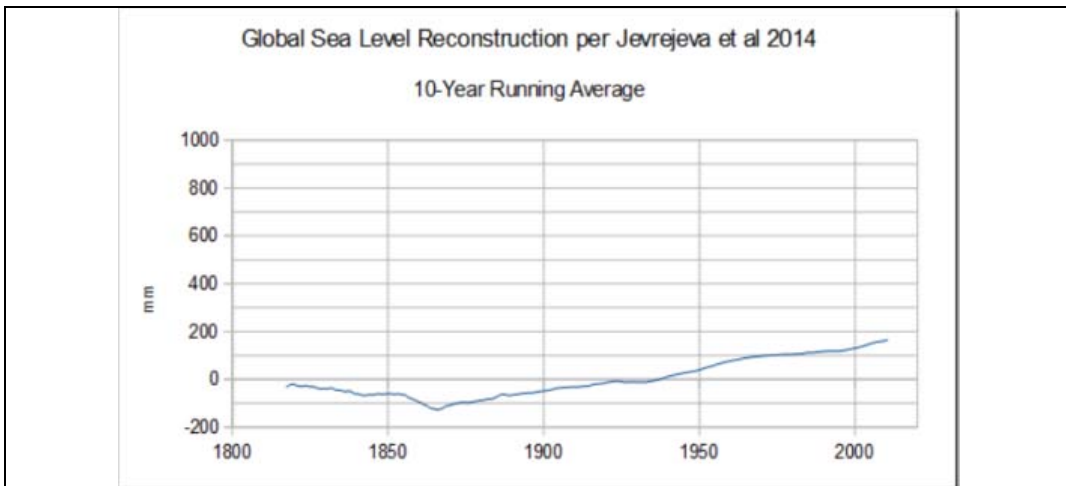


Figure 15: Reconstructed global sea levels, showing a gradual rising trend since about 1860, with no signs of acceleration as predicted by some. Source [34].

A recent report by Judith Curry [96] found a gradual creep in sea level rise in the last 150 years of about 18cm. It concluded that this gradual recent rise in sea level was within the range of natural sea level variability seen over the past several thousand years. The study found no convincing fingerprint relating this gradual rise to human-caused global warming.

In Ireland, sea level increases of 6-7mm/year have recently been quoted, however close analysis by Peter O’Neill indicates those figures to be erroneous [104]

**2.5. Recent “Extreme” Weather Events are generally not unprecedented, nor is there a proven link to anthropogenic GHG emissions**

IPCC AR5 [1] found little evidence that the frequency of extreme weather events is related to gradual recent global warming. In almost every case of a reported “extreme event”, a careful review of historic records shows that the data reported may be unrepresentative (for example due to Urban Heat Island effect) and that it is not unprecedented [92].

IPCC in its 2012 Extreme Events Report [93] indicated that any signal in climate variability will be small compared with natural weather variability for decades to come. It is notable that HH Lamb [21,90] documented extreme weather events in the global cooling period of the 1960s and 1970s. A recent paper by Kelly [43] found strong evidence that the first half of the 20<sup>th</sup> century had more extreme weather than the second half, despite the claim that anthropogenic global warming leads to more weather extremes. Taking some specific areas:

**2.5.1 Wild Fires**

Media reports linked the incidence of summer wild fires in Europe in 2017/18 to global warming, but the historical record [45] shows that there were more wild fires in the 1990s, while the trend in burnt area is actually declining, see Figure 16.

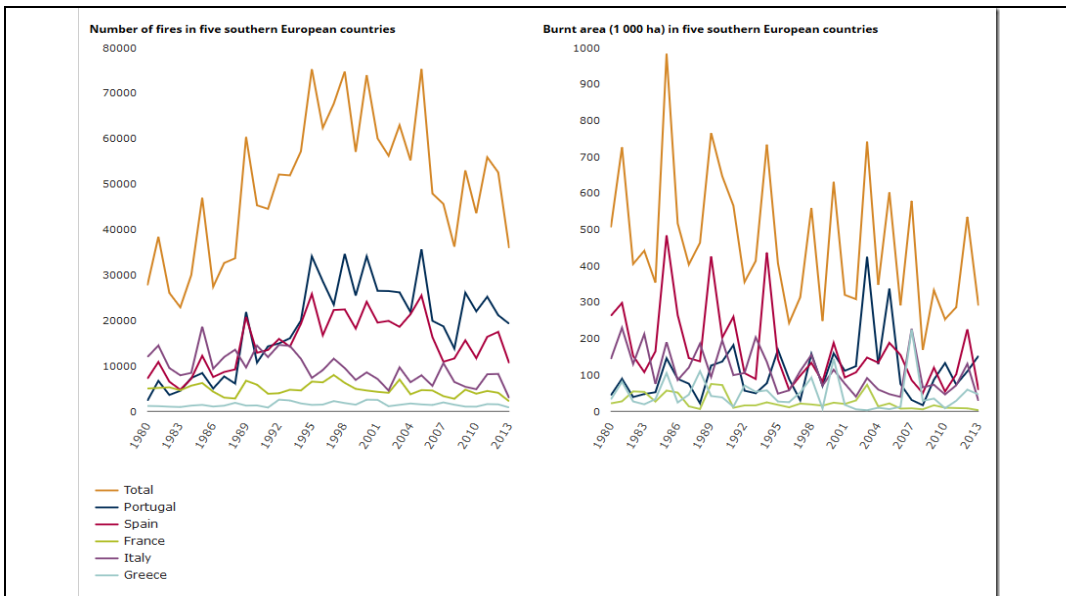


Figure 16: The number of forest fires in Europe since 1980 peaked in the 1990s, and have been relatively low in the last few years (left); the trend on burnt acreage is even more stark (right), showing consistent decline since the 1980s. Source [45].

Parallel historical data for California indicates that the number of wild fires in California has actually declined since the decade of the 1970s to 1990s, see Figure 17.

The recent fires in California, when objectively analysed, were not attributable to climate change, see <http://cliffmass.blogspot.com/2018/11/was-global-warming-significant-factor.html> [101].

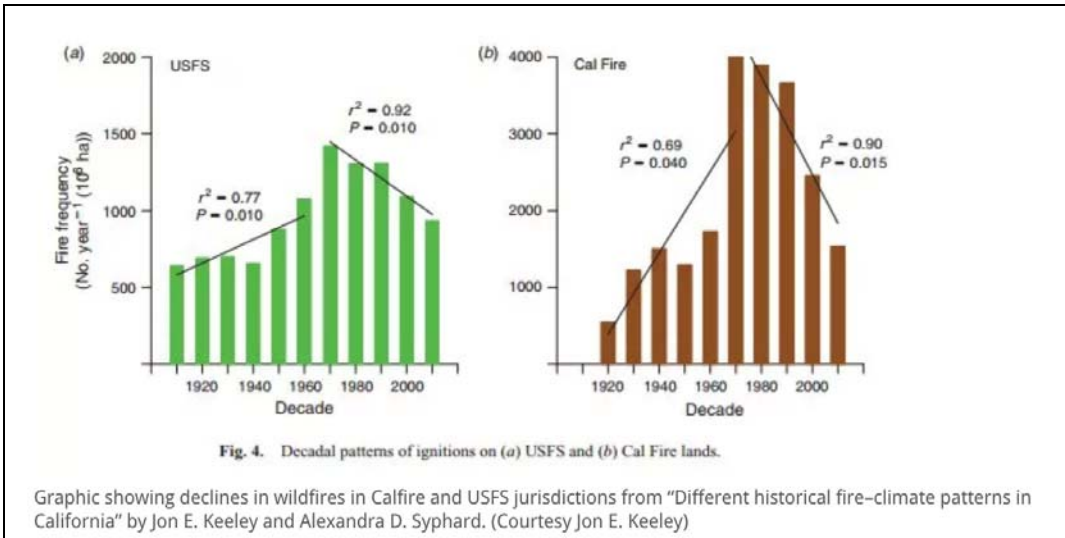


Figure 17: Graphic showing declines in wild fires in California, which peaked in the 1970s to 1990s. Source: “Different historical fire-climate patterns in California” by JE Keeley and AD Syphard, 2018.

### 2.5.2 Droughts

As another example, the recent water shortage in Cape Town was alleged to be due to climate change. In fact, the recent rainfall pattern is not unprecedented except for 2015 (Figure 18), the main difference being the 10-fold increase in the city’s population since 1900 and lack of system investment and maintenance [48]. HH Lamb [21,90] and others [22] document a long history of droughts in Africa.

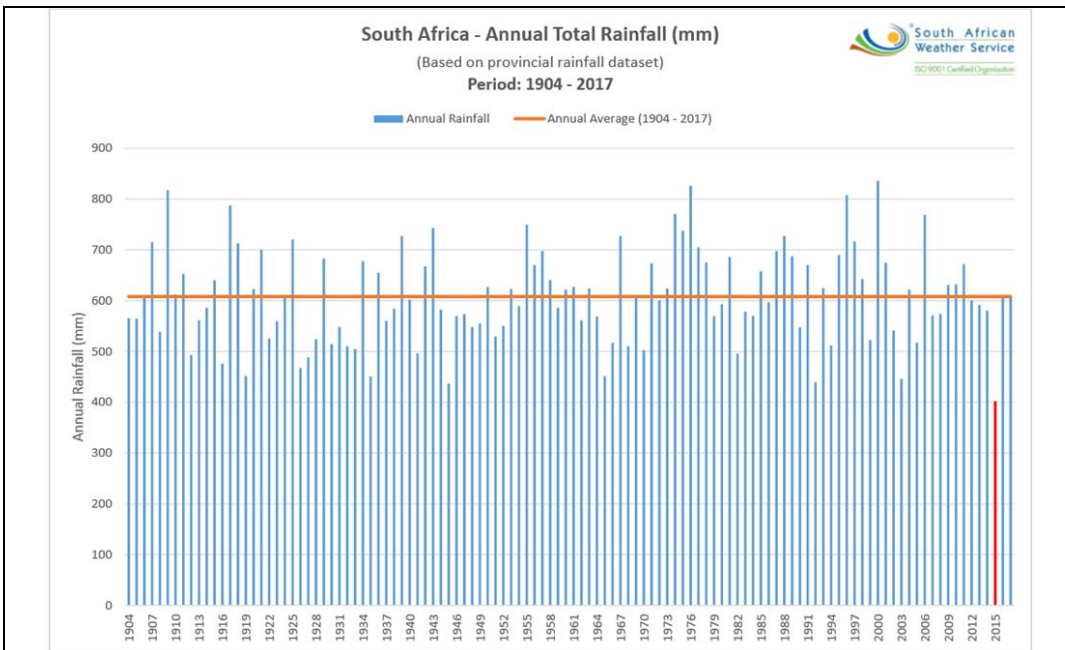


Figure 18: South Africa annual rainfall data from 1904 to 2017, indicating that despite the exceptionally low rainfall in 2015, the longest drought periods were in fact from 1930 to 1933 and from 1944 to 1949. Source [48].



A recent study by Heim [85], confirms that 21<sup>st</sup> century droughts in the US were less severe than those of the 1930s and similar to those of the 1950s, see Figure 19.

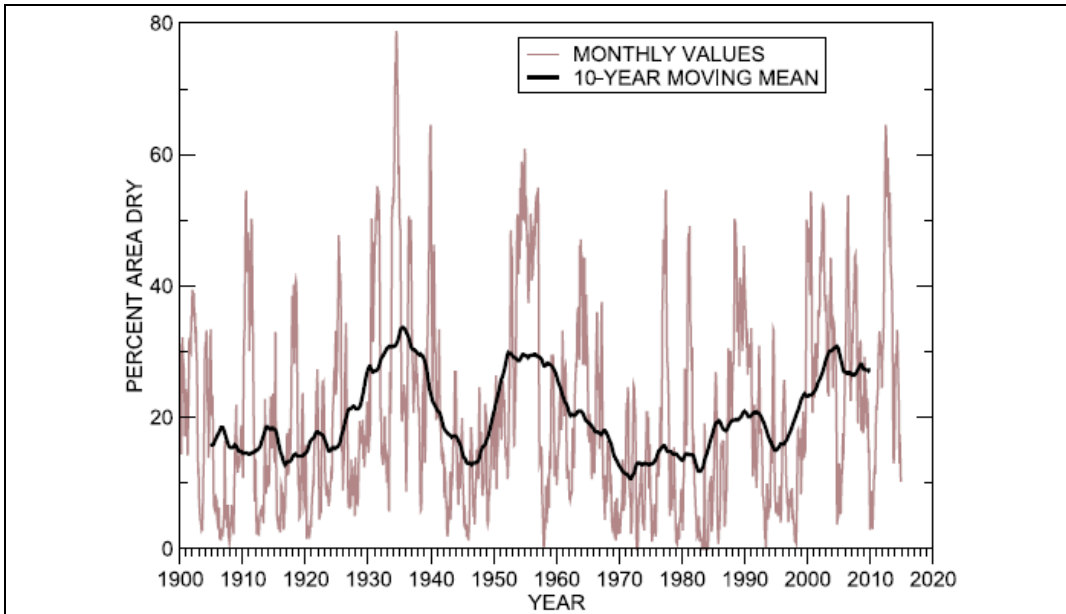


Figure 19: Percent area of the contiguous US experiencing moderate to extreme drought conditions from Jan 1900-Dec 2014, where the black curve is the 10-year moving-mean filter. Source [85].

Recent analysis confirms a long history of drought in Australia, see Figure 20.

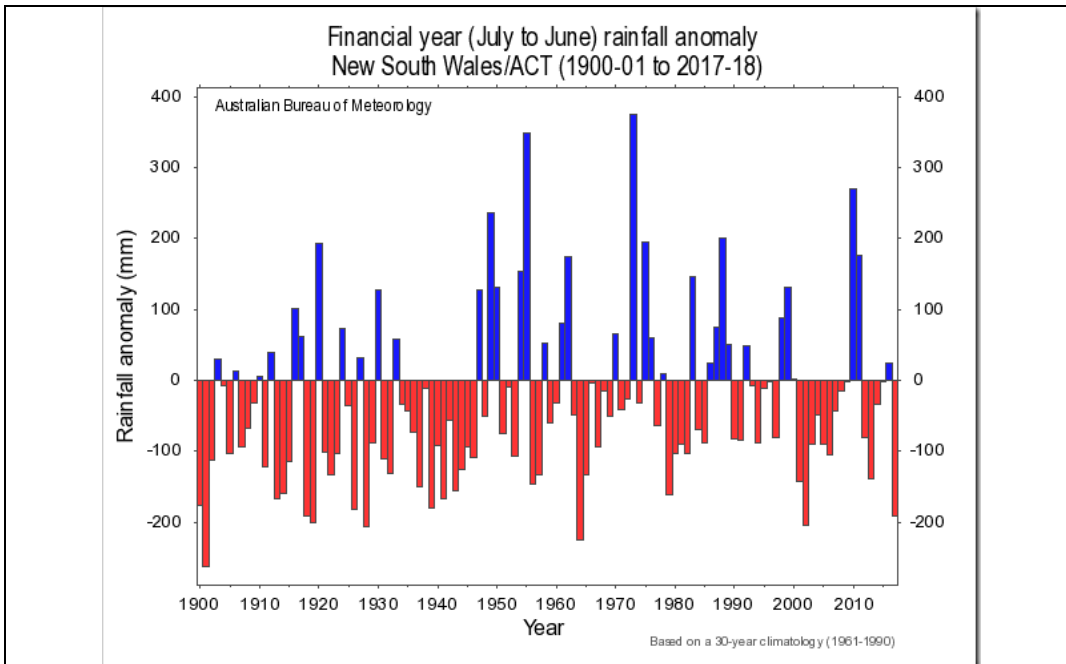


Figure 20: Rainfall Anomaly 1900-2017 for New South Wales indicating high prevalence of droughts, [http://www.bom.gov.au/climate/change/index.shtml#tabs=Tracker&tracker=timeseries&tQ=graph%3Drranom%26area%3Dnsw%26season%3D0706%26ave\\_yr%3D0](http://www.bom.gov.au/climate/change/index.shtml#tabs=Tracker&tracker=timeseries&tQ=graph%3Drranom%26area%3Dnsw%26season%3D0706%26ave_yr%3D0)

**2.5.3 Hurricanes and Tornadoes:**

As yet another example, it is alleged that the number of North Atlantic hurricanes, including Hurricane Ophelia, is evidence of climate change. As Figure 21 shows [49], there were 10 hurricanes in 2017, equalled or beaten on 14 previous occasions. There were 6 major hurricanes of Category 3 and over in 2017, well below the record of 8 set in 1950. There were 2 Category 5 hurricanes in 2017 (Irma and Maria), but with similar occurrences in 1932, 1933, 1961, 2005 and 2007. In terms of accumulated cyclone energy, 1933 was the highest.

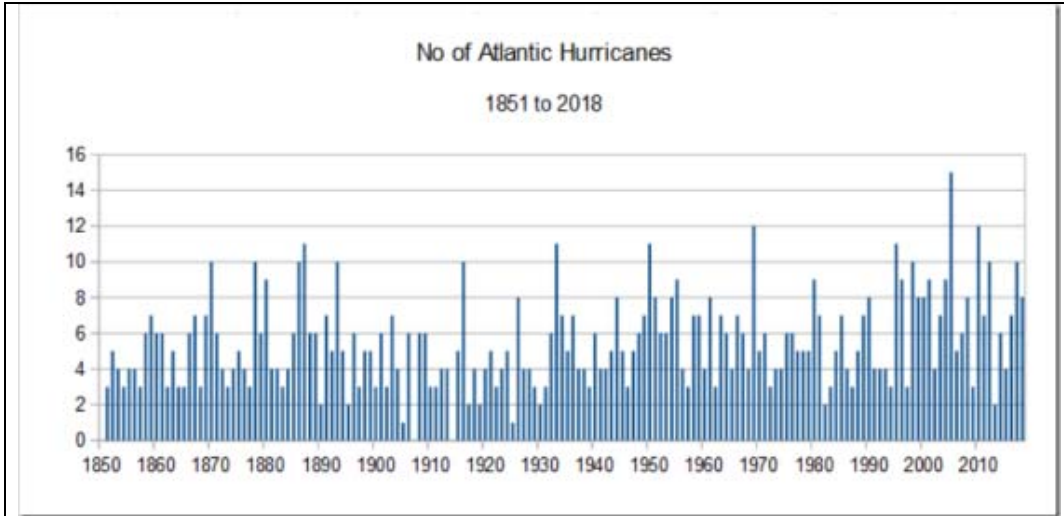


Figure 21: Numbers of Atlantic Hurricanes 1852-2017 (though data prior to 1966 is very likely to have been underestimated number and strength of earlier cyclones). Source [49].

On a global level, Figure 22 shows that hurricane activity peaked in the 1990s.

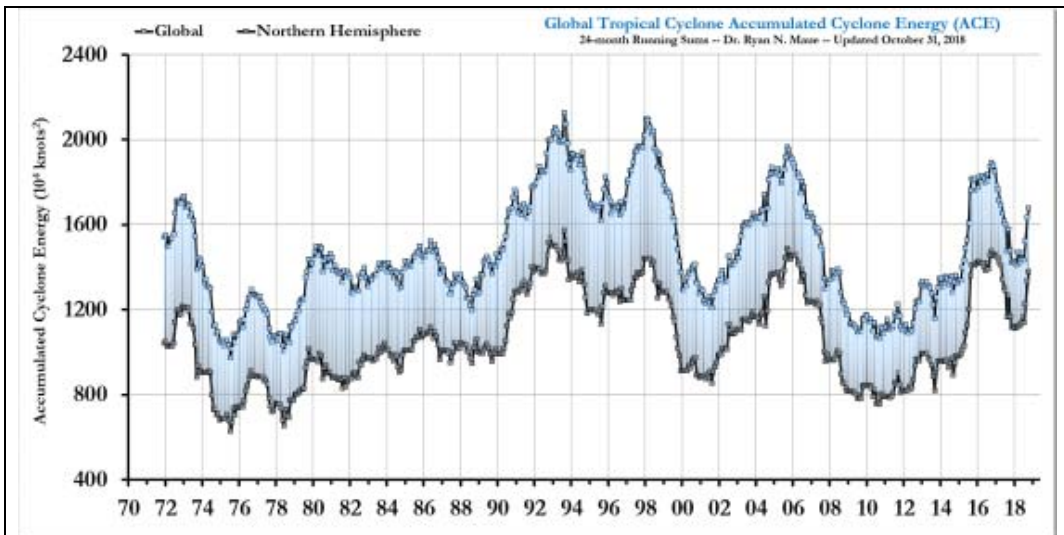


Figure 22: Trend of global accumulated cyclone energy peaked in the 1990s, source: <http://www.policlimate.com/tropical/>

In terms of tornados, 2018 was the first year since records began in 1950 that there were no violent tornados in the USA, see Figure 23.

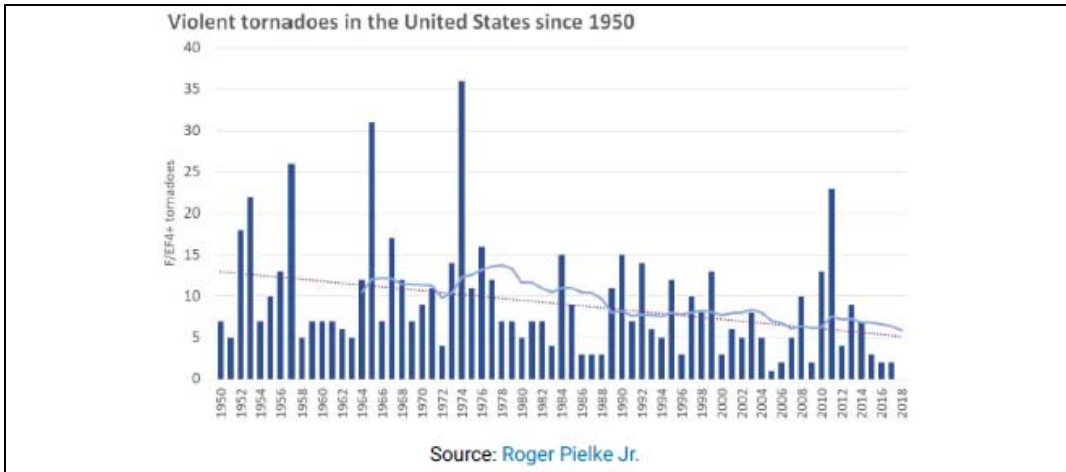


Figure 23: Trend in US violent tornados (those ranked in category 4 and 5), showing none in 2018, for the first time since systematic records began in 1950, with a generally declining trend.

**2.5.4 Floods:**

According to IPCC AR5 [1], “there continues to be a lack of evidence and thus low confidence regarding the sign of trend in the magnitude and/or frequency of floods on a global scale over the instrumental record.” A recent paper [44] (Hodgkins et al., 2017) concluded that, over the past 80 years, “the number of significant trends in major-flood occurrence across North America and Europe was approximately the number expected due to chance alone. Changes over time in the occurrence of major floods were dominated by multi-decadal variability rather than by long-term trends.” Other studies broadly concur [29,46,47]. The long-term UK rainfall trends would seem to be in agreement, see Figure 24.

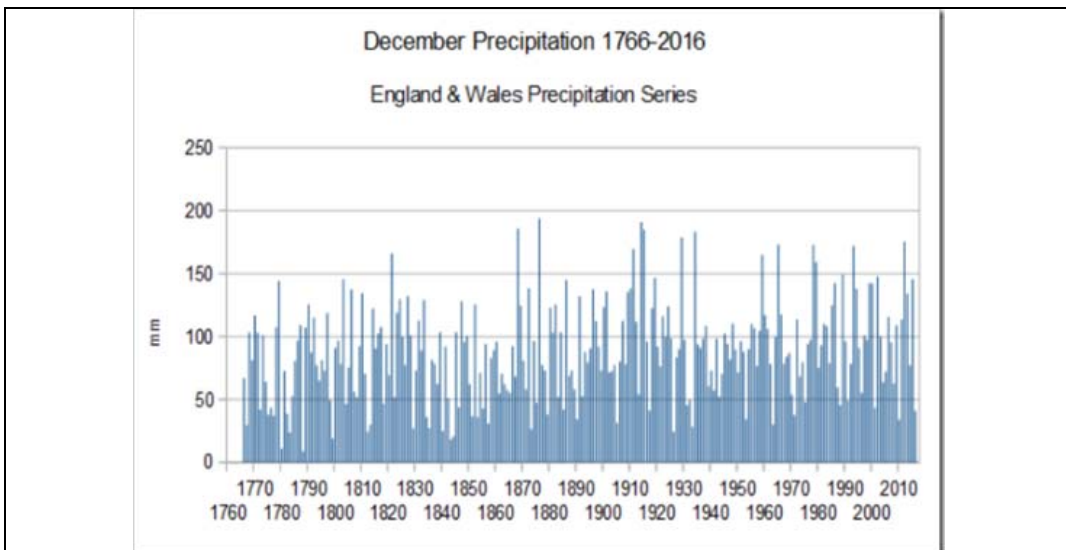


Figure 24: December rainfall trends in the UK since 1766, where the driest was December 2012 and the wettest was December 1876.

### 2.5.5 Coral Bleaching:

A recent reconstruction [95] of four centuries of temperature-induced coral bleaching in the Great Barrier Reef found that the frequency of bleaching was significantly higher in the 1890s and 1750s, see Figure 25, confirming that coral bleaching recovers naturally.

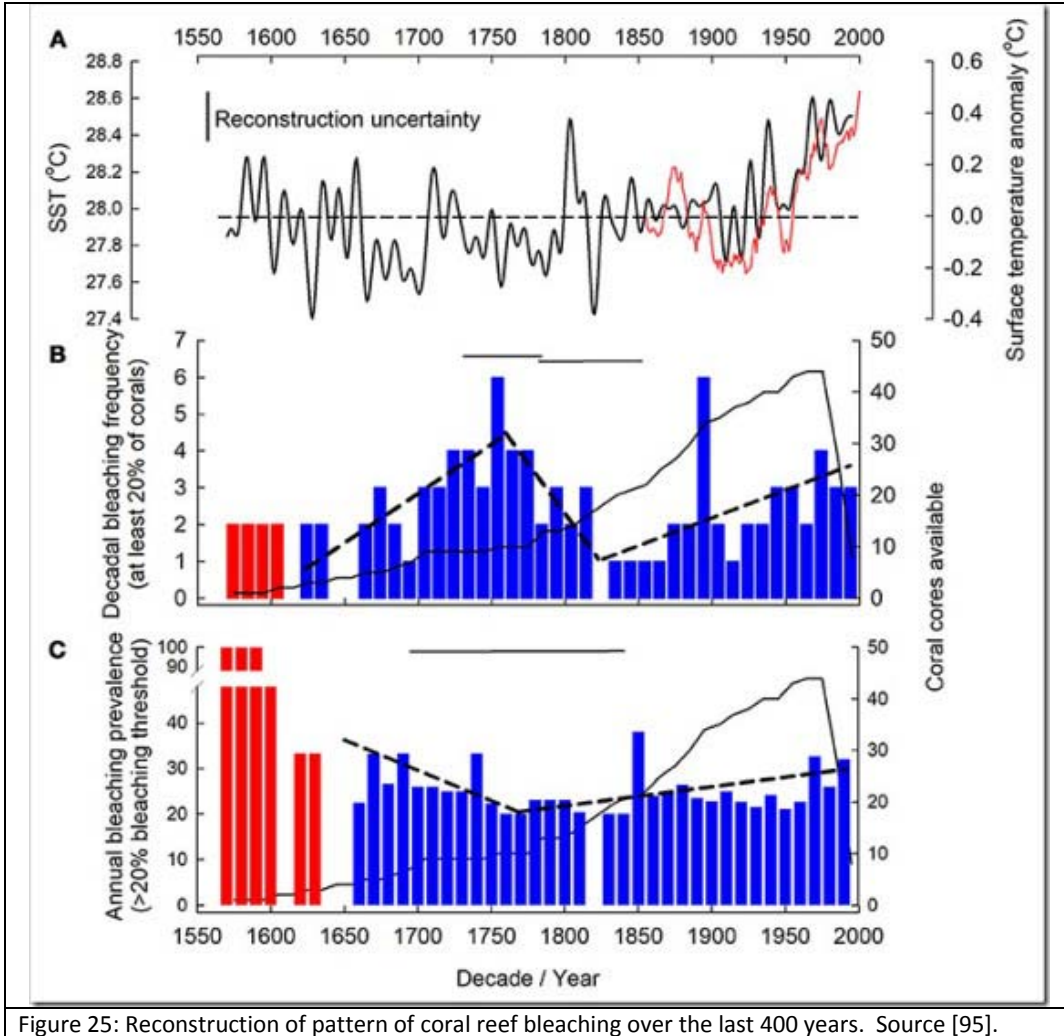


Figure 25: Reconstruction of pattern of coral reef bleaching over the last 400 years. Source [95].

### 2.5.6 Heatwaves

In particular, in summer 2018, a persistent high pressure anomaly over Scandinavia caused high temperature and drought anomalies in Northern Europe from May to July, while Southern Europe was unusually wet.

The 2018 summer's 32.1C in Sodankyla, northern Finland (inside the Arctic Circle), is not totally unprecedented in that it compares with 31.7C in 1914 and 31.5C in 1934 (see Figure 26).

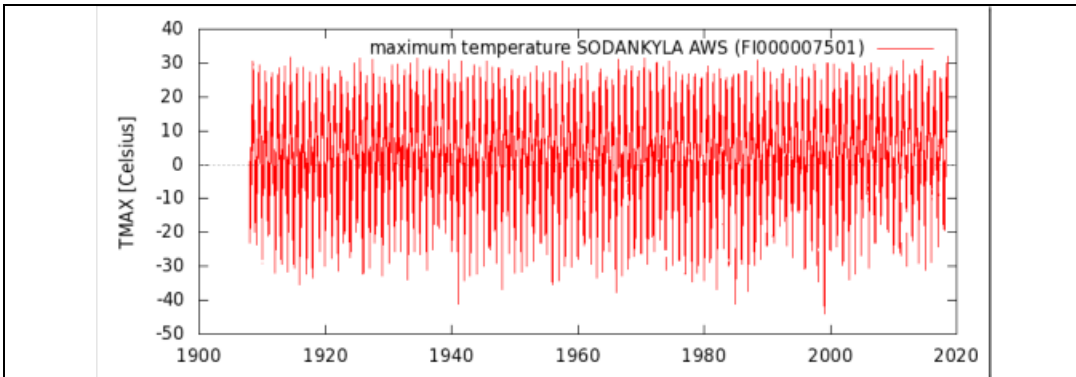


Figure 26: Maximum temperature trends in Sodankyla in Northern Finland , which is inside the Arctic Circle, illustrating that above 30°C is not uncommon as these northerly altitudes, see [http://climexp.knmi.nl/gdcntmax.cgi?id=someone@somewhere&WMO=FI000007501&STATION=SODANKYLA\\_AWS&extraargs=](http://climexp.knmi.nl/gdcntmax.cgi?id=someone@somewhere&WMO=FI000007501&STATION=SODANKYLA_AWS&extraargs=).

Media frequently report “hottest ever” summers, citing climate change as the cause. Satellite data indicates a slightly increasing trend, but that these temperature anomalies can be linked to the El Niño/La Niña cycles, as in Figure 27 below:

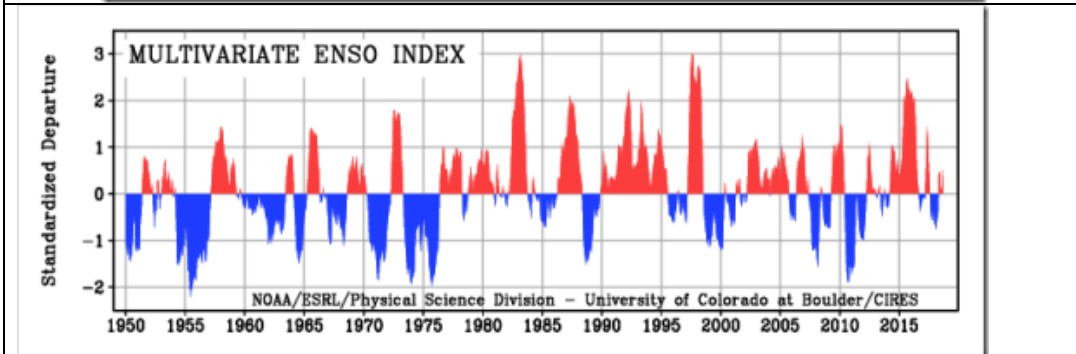
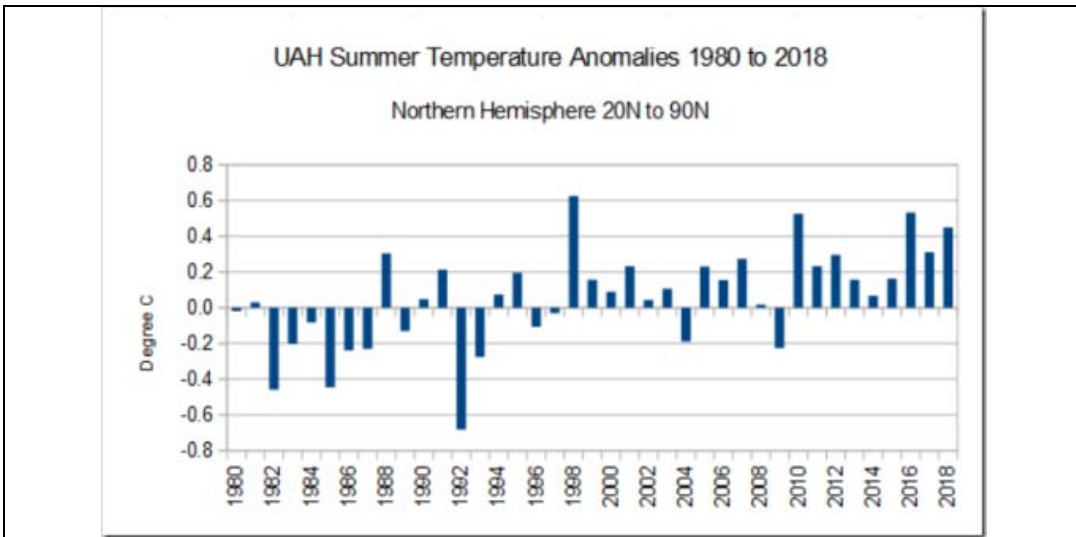


Figure 27: demonstrating that hot summers in the northern hemisphere are closely linked with El Niño and La Niña activity, sources: [https://www.nsstc.uah.edu/data/msu/v6.0/tlt/uahncdc\\_lt\\_6.0.txt](https://www.nsstc.uah.edu/data/msu/v6.0/tlt/uahncdc_lt_6.0.txt) and <https://www.esrl.noaa.gov/psd/enso/mei/>.

**2.5.7 Some Further Observations on Weather Events in the Irish Context**

According to Met Eireann records [39], the highest air temperature ever recorded in Ireland was 33.3°C, recorded at Kilkenny Castle on June 26, 1887, with the lowest air temperature recorded as -19.1°C at Markree Castle on January 16, 1881.

National temperature records indicate an average increase of 0.8°C in the last 110 years, however if only rural station data is used (eliminating the urban heat island effect), this reduces to only 0.4°C [17,41]. Over the period January 1942 to December 2018, the measured maximum daily temperature increase at Valentia was only 0.28°C, while that at Dublin Airport was 0.84°C, three times higher [40]. An analysis of cold days at Dublin Airport with temperatures of less than or equal to 0°C over the same time period indicated slightly more frost days in 1980-2018 than in 1942-1980, though the opposite was true of Valentia.

The national temperature records indicate cooling 1869-1892, warming 1892-1945, cooling 1945-1973 and warming 1975-2013. The warming and cooling episodes do not correlate with linearly-increasing GHG levels.

Ocean temperatures have been found to influence the Irish climate [42], particularly the Atlantic Multi-decadal Oscillation (AMO), with a frequency of about 60 years in the 20<sup>th</sup> century; it can explain the warmer period of the 1930-1940s and of the 1990s. The AMO is now entering a cooling period.

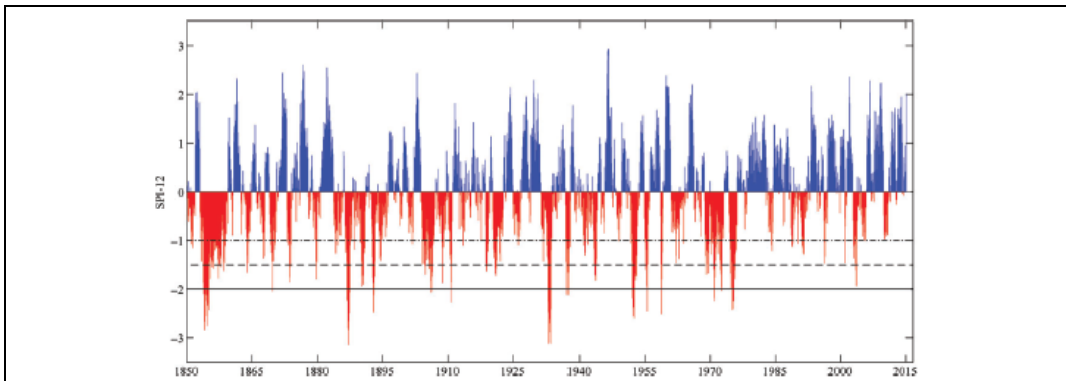


Figure 28A, Standard precipitation Index for the Island of Ireland, 1850-2015, where the red areas represent drought severity (for example -2 being severe drought), source [102, its Figure 2]

On rainfall, a recent paper by Murphy et al [91], found inter-decadal and centennial natural variability of precipitation in Ireland was much larger than previously thought. National records also show droughts as far back as 1820. A paper by Noone et al [61] describes Ireland as drought-prone, but that recent decades were unrepresentative of the longer-term drought climatology (Figure 28A). Seven major drought periods were identified, which caused agricultural hardship, water resource crises, with some leading to major famines, the most severe being in 1800-1809 and 1854-1860. The drought of 2018 was not exceptional.

There is insufficient data to come to any conclusion about flooding frequency or severity; Met Eireann records show flooding episodes as far back as 1802. As regards snowfall, Met Eireann records also note significant snowfall in January-April 1917, January-March 1947, January 1982 and January 1987, prior to the snowfalls of February-March 2018.



Independent analysis [40] of the Met Eireann wind speed data indicates slightly reducing gust wind speeds over recent decades at Malin Head, Mullingar and Cork and Dublin Airports (see Figure 28B). This agrees with a prior RIA analysis of 2017.

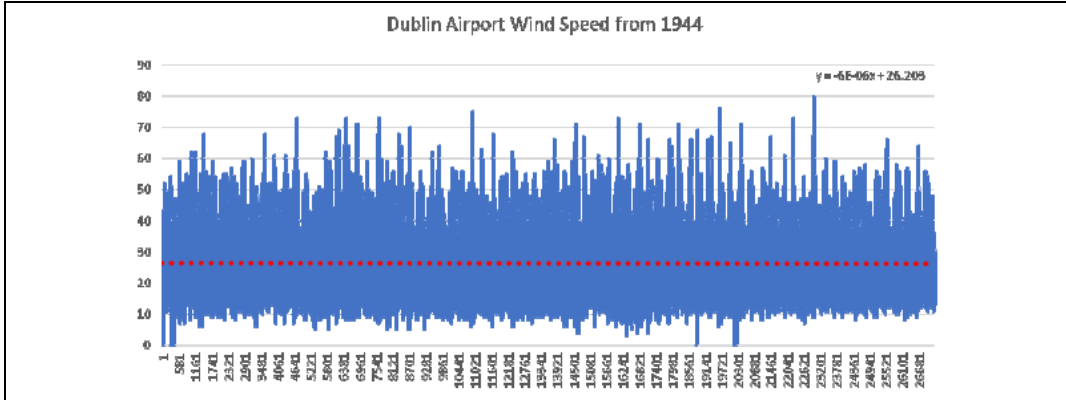


Figure 28B: Trends showing slightly declining air gust wind speeds (in knots) at Dublin Airport since 1944, source [40].

Much has been mentioned in the media about Storm Ophelia, in October 2017, being an “extreme event”. However, this storm was not even in the top ten as regards 10-minute sustained wind speed or gust speed since records began in the early 1940’s (see Figure 28C).

Date	km/h	County
Thu, 18-Jan-1945	131.5	Limerick
Wed, 24-Dec-1997	125.9	Cork
Tue, 3-Jan-2012	125.9	Donegal
Sat, 26-Dec-1998	124.1	Donegal
Tue, 2-Mar-1982	124.1	Donegal
Sat, 16-Sep-1961	122.2	Donegal
Thu, 31-Jan-1957	122.2	Mayo
Wed, 12-Feb-2014	120.4	Galway
Wed, 9-Jan-2008	120.4	Donegal
Mon, 15-Jan-1968	118.5	Donegal
*Sun, 16-Oct-2017	114.8	Cork

**Figure 4** Hurricane Force 10-minute mean winds, including \*Ophelia for reference.

Date	km/h	County
Sat, 16-Sep-1961	181.5	Donegal
Sun, 27-Jan-1974	177.8	Mayo
Tue, 24-Oct-1995	177.8	Wexford
Sat, 26-Dec-1998	177.8	Donegal
Thu, 31-Jan-1957	174.1	Mayo
Sat, 12-Jan-1974	174.1	Cork
Sat, 17-Jan-2009	174.1	Mayo
Tue, 9-Feb-1988	172.2	Mayo
Tue, 5-Feb-1957	172.2	Donegal
Sat, 26-Dec-1998	172.2	Mayo

**Figure 5** Top gusts in Ireland since 1942

Figure 28C: Top 10 storms in Ireland, ranked by 10-minute sustained wind speed or gust speed, based on Met Eireann data on <https://www.met.ie/cms/assets/uploads/2018/10/Ophelia.pdf>.

Likewise much media attention was recently focused on the October 2019 Hurricane Lorenzo as being caused by climate change. In a detailed analysis, Prof Ray Bates [105] concluded that the evidence indicates that Lorenzo’s unusual track and intensity were due to anomalous wind and sea surface temperature patterns associated with natural variability rather than to greenhouse gas-induced Atlantic warming.

Overall, Irish weather records, despite some warming, appear not to indicate any increased incidence of “extreme” weather events in recent times, in fact, the opposite.



### 3. Solar and other Natural Influences

#### 3.1. Influence of the Sun, Cosmic Rays and Clouds on Climate

The Solar influence on climate change has received only modest scientific research funding compared to that provided for studying of the GHG influence, yet the Solar influence is in many ways plausibly linked to past and current climate observations. The Solar influence has hitherto been largely discounted by IPCC as insignificant compared to the GHG influence, a thesis which is now questioned by many scientists [56,57,58,59,80,81,82].

Thanks to pioneering work by Henrik Svensmark and Nir Shaviv, it is now proven that an increase in solar activity, as measured by the number of sunspots, causes a small increase in solar magnetic fields allowing fewer cosmic rays to enter the Earth's atmosphere, so reducing the ionisation of air molecules, thereby creating fewer or smaller cloud nuclei. This produces more transparent clouds and so less reflection of solar radiation back into space [60,62,63,64]. Hence more and stronger solar radiation then reaches the Earth's surface, increasing surface temperatures. The opposite happens when fewer sunspots and hence a lower solar magnetic field produces whiter clouds, reflecting more solar radiation back into space. In other words, solar radiation variability is amplified into climate variability through the influence of cosmic rays, see Figure 29. IPCC does not recognise this amplification factor.

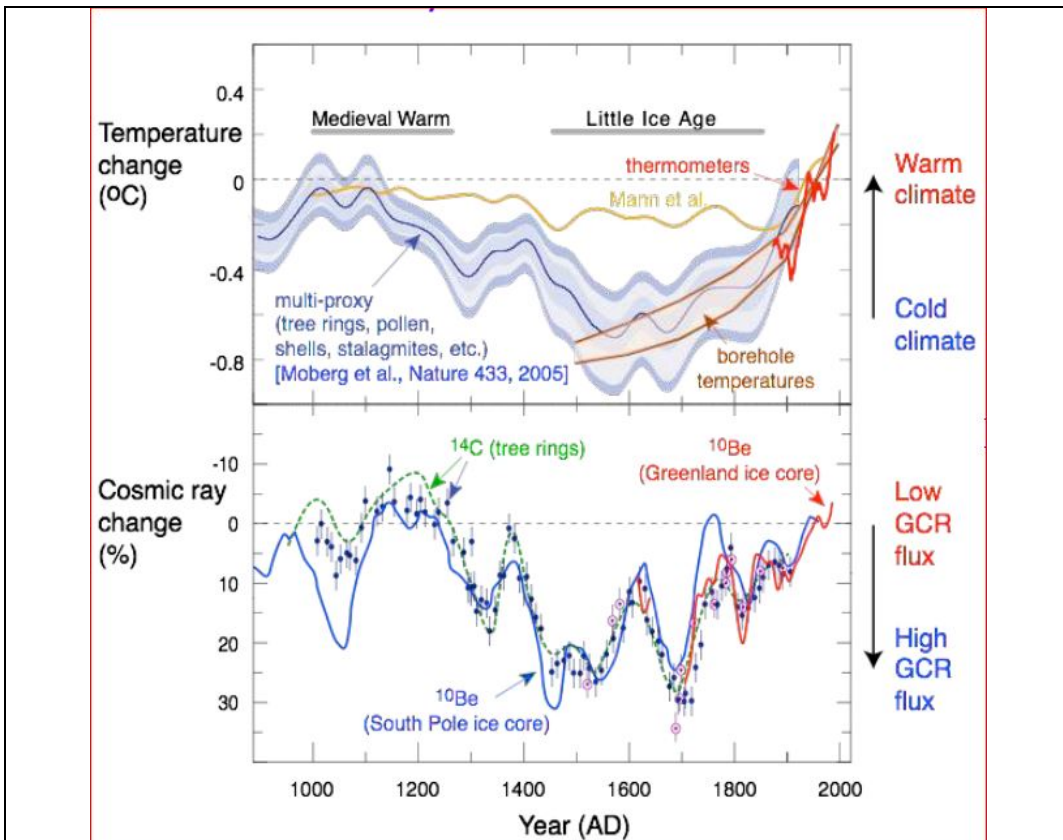


Figure 29: The correlation of cosmic rays with global temperature over a 1,000 year period, where a stronger solar radiation leads to less cosmic rays and a warmer earth, and vice versa. Source [63].

Nir Naviv has also demonstrated that the sun plays a major role in climate change over geologically long time periods. His research also reviews the evidence which proves the existence of and quantifies the physical mechanism linking solar activity and climate, namely through modulation of the galactic cosmic ray ionization of the atmosphere and its effect on cloud cover. In particular, he shows that the link has operated on geological time scales, linking our galactic motion to long term climate variations [73,74,75,76,79].

In accounting for the cosmic ray effect on climate projections, and Nir Shaviv thereby infers that the GHG influence is significantly smaller than IPCC predicts. According he predicts a maximum temperature rise of probably about only 1°C, as in Figure 30 below. IPCC has unfortunately disregarded the multiplicative effect of changes in solar radiation on earth’s climate.

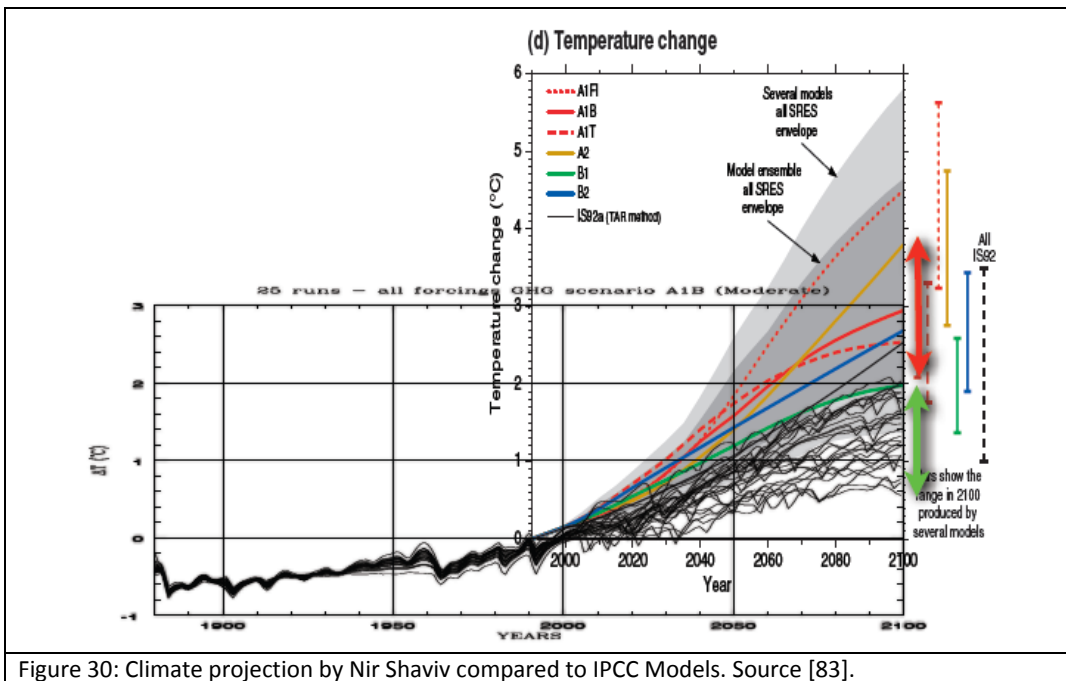


Figure 30: Climate projection by Nir Shaviv compared to IPCC Models. Source [83].

### 3.2. The Possible Influence of Interplanetary Oscillations on Climate

Nicola Scafetta has recently advanced research into natural climate oscillations and the interpretation of the post-2000 temperature standstill [70,71,72]. The period from 2000 to 2017 shows a modest warming trend that clearly diverges from the general circulation model (GCM) simulations after the ENSO effect (e.g. the strong 2015-2016 El Niño peak) is statistically removed from the data [77,78].

The observed pattern is the result of specific natural climatic oscillations plus an anthropogenic contribution. The climate system is characterized by specific oscillations (e.g. with periods of about 9.1, 10.5, 20 and 60-year plus other centennial to millennial oscillations) that are synchronized to specific solar and astronomical oscillations. These oscillations are not reproduced by the IPCC models and imply that astronomical forcing of the climate system have been underestimated or even ignored, and therefore that anthropogenic warming has arguably been significantly overestimated.

The semi-empirical climate models proposed in 2011 and 2013 by Scafetta (Figure 31) agree far better with the observations and project that the 21<sup>st</sup> century climate could be characterized only by a modest warming using the same IPCC emission scenarios. Overall, he predicts a likely temperature anomaly of about 1°C, with only the extreme highly unlikely IPCC RCP8.5 scenario possibly reaching only 2°C.

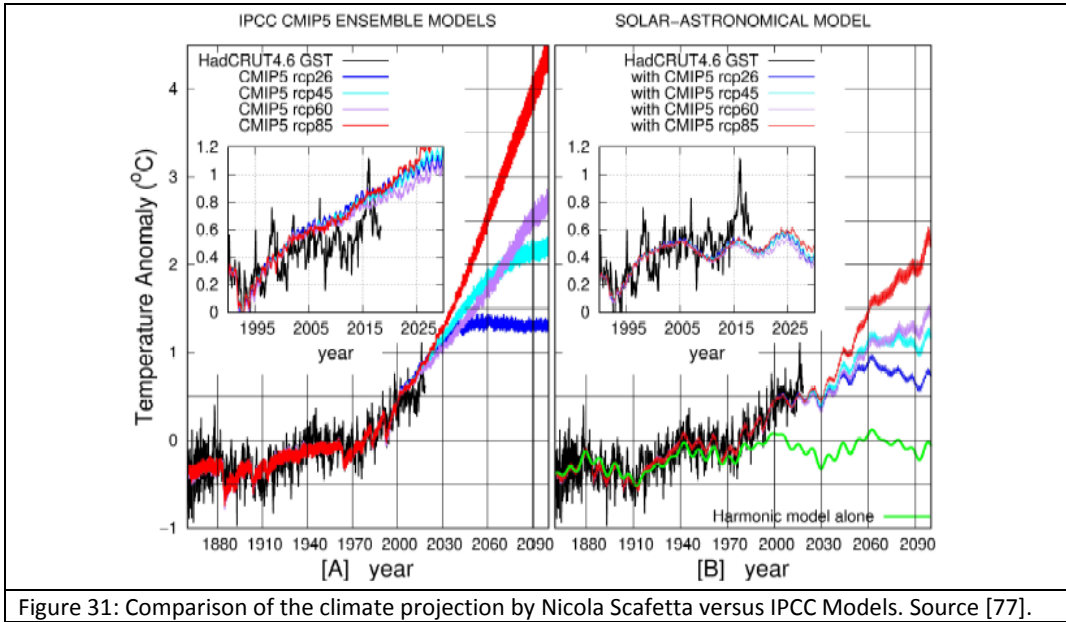


Figure 31: Comparison of the climate projection by Nicola Scafetta versus IPCC Models. Source [77].

Once this thesis is taken into account, a much more consistent picture for the 20<sup>th</sup> century global warming is obtained (as in Figure 31); in it, overall climate sensitivity is probably only of the order of 1°C and future climate change is predicted to be benign [83]. It is notable that both the cosmic ray influence of Svensmark/Shaviv and the interplanetary oscillation influence of Scafetta point to a GHG influence sensitivity of about 1°C, which in turn agree with the more recent GHG sensitivity analyses.

### 3.3. Projections based on Solar Influences including a possible Global Cooling

The sunspot cycle trend since 1600 clearly indicated their influence through the Maunder Minimum, Dalton Minimum and Modern Maximum (Figure 32).

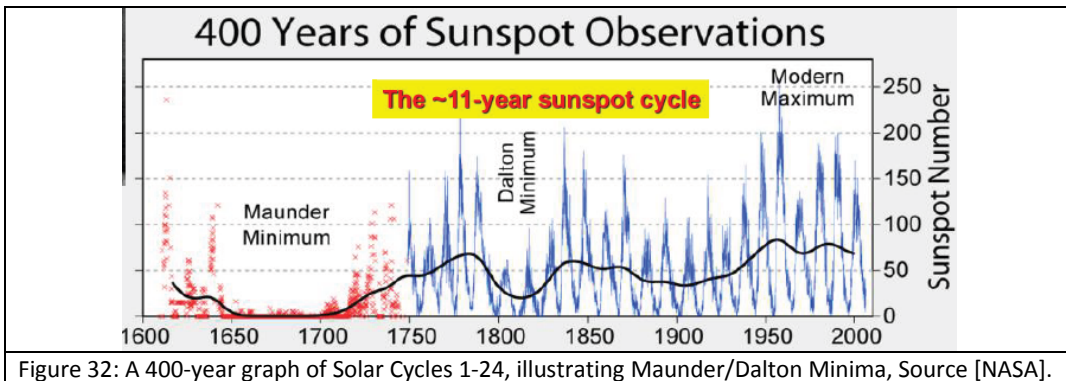


Figure 32: A 400-year graph of Solar Cycles 1-24, illustrating Maunder/Dalton Minima, Source [NASA].

Current indications are that the Sun is entering a low activity phase (that is with less sunspots) after the Grand Maximum of solar cycles 19-23 spanning the latter half of the 20<sup>th</sup> century (Figures 33 and 34), which might in itself be the main, if yet unproven, cause of observed global warming in that time period. There has been a marked decline in sunspot numbers through cycles 23 and 24 so far, which has been compared to the trend in cycles 4 to 6 in 1800 to 1835 which caused the Dalton Minimum and consequently the Little Ice Age.

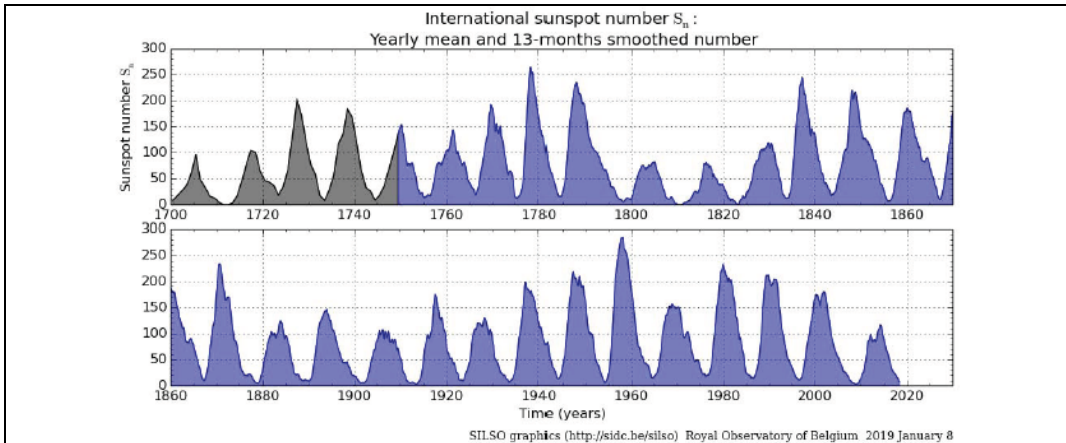


Figure 33: Recent solar cycles may be tending towards a Grand Minimum, Source: [65]

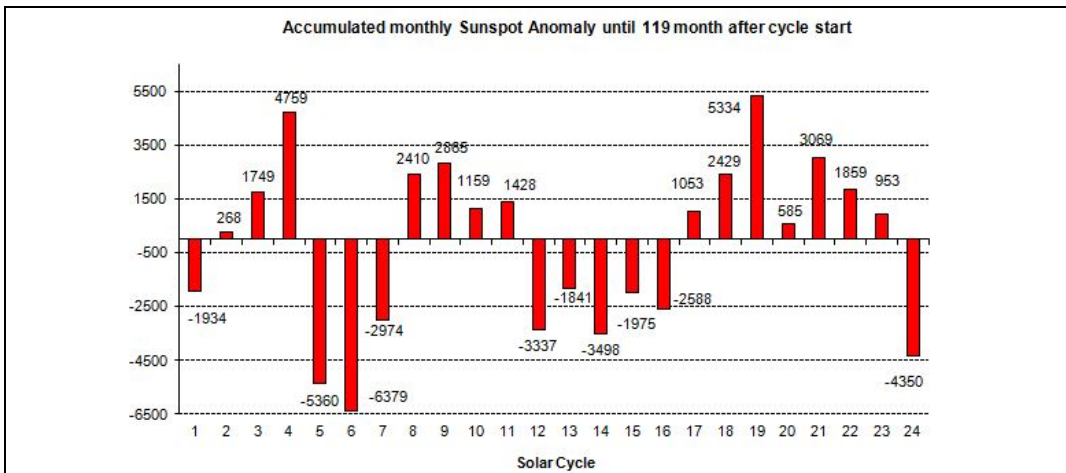


Figure 34: illustrating that the current solar cycle 24 sunspot anomaly is similar to that of cycle 5, which preceded the Maunder Minimum. Source F Bosse and F Vahrenholt

Others [68,69] predict, postulating a weak solar cycle 25, that the Gleissberg and Suess/de Vries cycles will reach low points in 2020-2040, possibly approaching the situation prevailing during the Dalton Minimum in 1790-1820. In that case, the global mean temperature might possibly decline by 0.4°C to 0.6°C by 2035, and then rise again in the 2060s [23]. An analysis by Niroma shows the pattern of solar cycles between 1600 and 1820 to have a strong similarity with those from 1821 to the present, thereby speculatively suggesting the onset of another Little Ice Age. This research has been recently further extended by Zharkova and Abdussamatov [65,66,67]. Zharkova [59,76] has predicted a major decrease in the solar magnetic field in the next 10-20 years when two of its three fields come into opposing polarity thereby leading to a significant degree of solar and hence global cooling.

## 4. Lessons from Paleoclimate, recent Millennia and Centuries

### 4.1. Warming and Cooling Episodes in Paleoclimate

The Earth was formed some 4.5 billion years ago. Single-cell life forms emerged 3.8 billion years ago. Around 630 million years ago (Mya), the climate changed from a “snow-ball Earth” into the cold and glacial Cambrian and Ordovician Periods; since 500Mya, glacial periods alternated with warm humid periods, with Carbon Dioxide (CO<sub>2</sub>) levels at up to 15 times that of current levels, fostering the evolution of today’s life forms (Figures 35 & 36). The climate was particularly hot and humid through during the age of Dinosaurs some 250Mya.

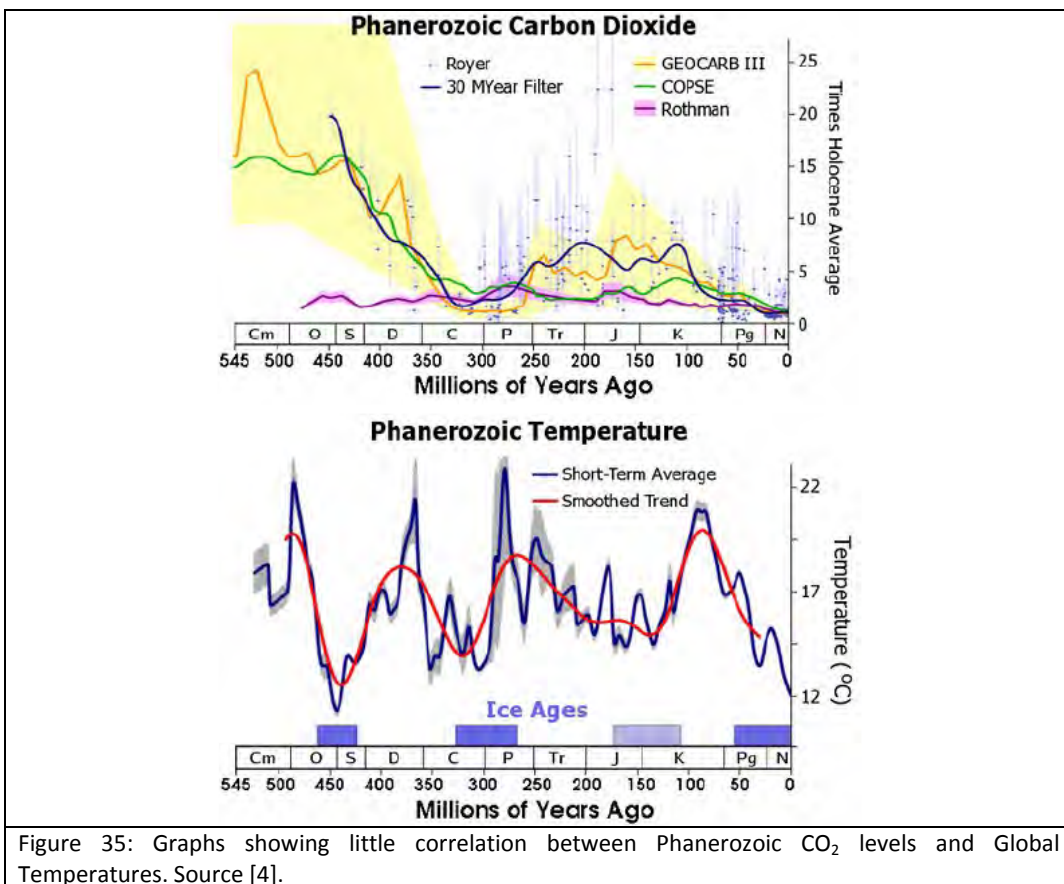
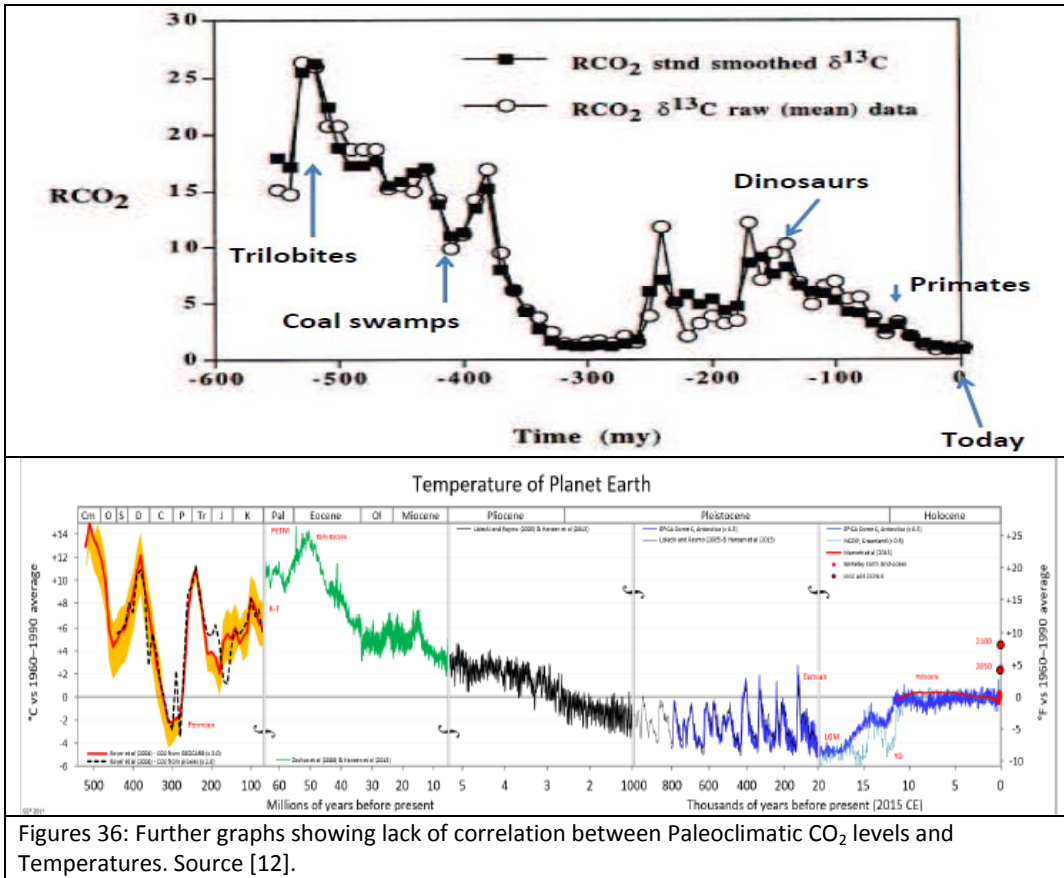


Figure 35: Graphs showing little correlation between Phanerozoic CO<sub>2</sub> levels and Global Temperatures. Source [4].

The Early Eocene Interglacial (152-48Mya) saw CO<sub>2</sub> levels greater than 1000ppm and was a warm period, possibly with sea levels up to 20m higher than today. The Mid-Pliocene Interglacial (3.3-3Mya) saw CO<sub>2</sub> levels of 350-450ppm and was 1.9°C to 3.6°C warmer than now. Over the last 2My, there have been successive Glacials or Ice Ages, the more recent lasting 90-100ky, alternating with warmer Interglacial periods lasting 10-20ky (Figure 37). Generally, the onset of the Interglacial periods appears to have been slow, but abrupt warming changes have been inferred, with up to 10-15°C warming in only 75y. Peak temperatures in these Interglacials were warmer than today, with CO<sub>2</sub> levels below 300ppm during this period.





Figures 36: Further graphs showing lack of correlation between Paleoclimatic CO<sub>2</sub> levels and Temperatures. Source [12].

The Pleistocene/Emian Interglacial was a notably warm period 129-114ky ago with a sea level some 6m higher than now. This was followed by the most recent Ice Age 110ky-17ky ago, where sea levels fell again to some 120m below those prevailing today. After the last Glacial, sea level rose 120m in 20 thousand years (ky), the most rapid stage being a 20m rise in 340 years, see Figure 38.

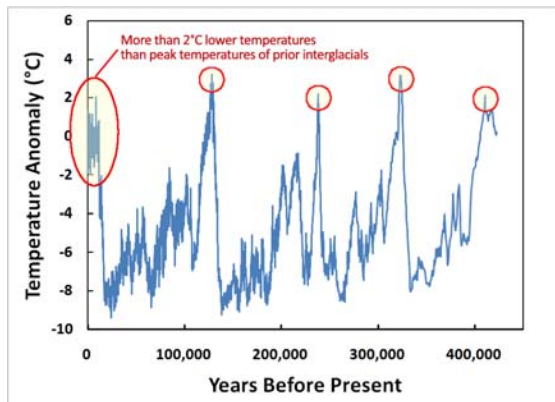


Figure 37: A 420ky history of the Earth's near-surface air temperature, extracted from Antarctic ice cores; temperatures were up to 2°C higher in all four recent interglacials. Source [25].

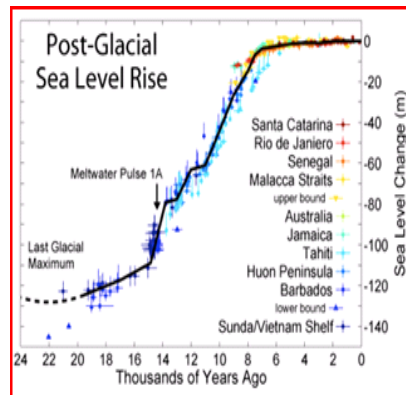


Figure 38: Reconstructed global sea level since the last Glacial Maximum 20kya, based on worldwide peat and coral deposits. Source [25].

#### 4.2 Warming and Cooling Episodes in Recent Millennia

Some 14ky ago there was a sudden warming, and sea levels rose (Figure 36 and 38). Then 12.5kya, the short Younger Dryas cold period occurred. After that, 11.5kya, strong warming occurred within 100y (half of this within 15y), leading to the Atlantic Meridional Overturning Circulation (AMOC) being shut down temporarily because of an ice melt. Some 10ky ago, the present Holocene Interglacial began, leading to a warmer wetter climate, with a further rise in sea level. In particular, the climate during the Holocene Climate Optimum (7000-3000BC) was warmer than today. During that period sea level may have been higher than today.

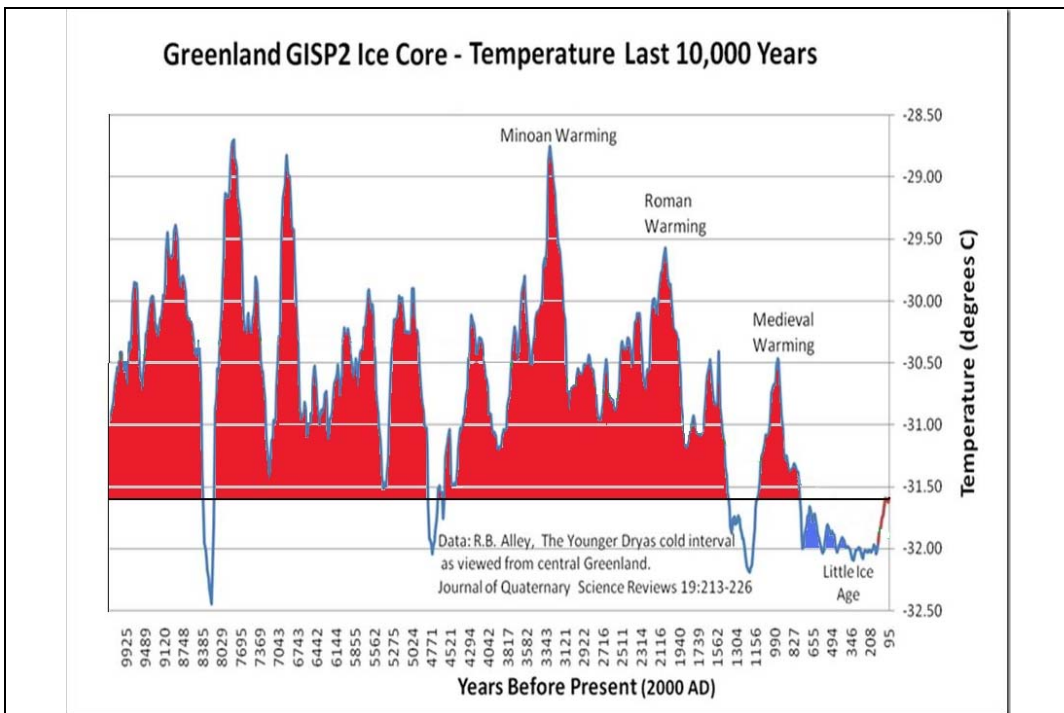


Figure 39: Not only have temperatures been higher than present for pretty much all of the last 10,000 years prior to the Little Ice Age, but the 19thC marked the coldest period of all since the Ice Age, as acknowledged by [Jørgen Peder Steffensen](https://notalotofpeopleknowthat.wordpress.com/2017/07/31/shukman-peddles-more-greenland-nonsense/). Source: <https://notalotofpeopleknowthat.wordpress.com/2017/07/31/shukman-peddles-more-greenland-nonsense/>

Around 800BC saw the transition from the Bronze Age to the warmer Iron Age. In 600-200BC, there was an unnamed cool period (with reports of a frozen river Tiber and silting of the Egyptian Sweetwater canal), where sea level may have again fallen. The period 200BC-500AD is distinguished as the Roman Warming [20,24] period (with grapes growing in Northern Europe and widespread cereal crop production in North Africa), with sea level similar to today.

This trend reversed in 500-900AD with the onset of the Dark Ages, at least in Europe. The worst time was the AD540 event, instigated by a comet or meteors, which led to plague in 542-545. In 590, the Justinian Plague led to the final collapse of Roman Empire. In 800-801, the Black Sea froze and in 829 ice formed on the Nile.



This cold period then faded, and 950-1300AD is known as the Medieval Warming or Little Climate Optimum, with temperatures of 0.6°C to 0.9°C warmer than today. Norse settlers went to a flourishing Greenland, and Europe’s population increased by 50%.

Over the period 1300-1850, the Little Ice Age occurred, with the coldest temperatures of the last 3,000 years. In 1300-1315 there were very wet winters with no grain. In 1347, the Black Death plague reached Europe, and its population fell by one-third in the later 14<sup>th</sup> century. There were successive epidemics in 1580-1620. In 1645-1715 there were very cold summers, coinciding with the Maunder Sunspot Minimum. There were major food shortages in 1690-1700, with more famines in 1725 and 1816. In 1801, William Herschel related the price of wheat to the number of sunspots. The winter of 1813/14 was the last time the Thames froze over. The Irish Famine occurred in 1845-1848.

**4.3. Warming and Cooling Episodes in Recent Centuries**

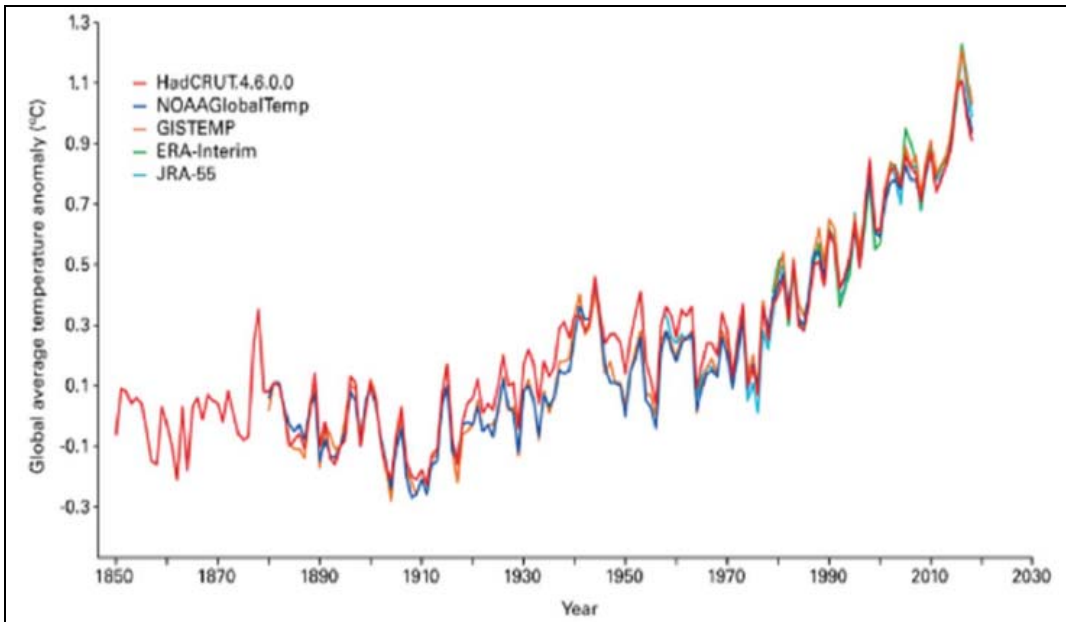


Figure 40: Global mean temperature anomalies with respect to the 1850-1900 baseline for the five global datasets, data source [UK met Office Hadley Centre]; it can be seen that surface temperatures cooled between 1880 and 1910, warmed between then and 1945, cooled again between then and about 1975 and warmed thereafter up to the 2015/16 El Niño peak, and have since declined.

The cool period continued up to 1890, followed by rapid warming from 1910 to 1945. In the USA, there were exceptionally warm years in 1921, 1931 and 1934. Then 1945 to 1978 saw irregular global cooling, followed by rapid warming again from 1978 up to the 1998 El Niño. Since then, as recognised also by IPCC, there was essentially a 20-year climate hiatus up to the El Niño of 2015/16, with cooling thereafter (Figure 40). Parallel studies have been carried out for China [88].

In summary, climate history in the paleoclimate, in recent millennia and centuries, does not indicate that GHG levels have driven global temperatures; if anything, the opposite.

**5. Increasing CO<sub>2</sub> levels are beneficial to Greening of the Planet**

It is little appreciated that the increasing CO<sub>2</sub> level is actually beneficial to the greening through photosynthesis of the planet, and therefore may be beneficial to feeding the global population as it heads towards 9-10 billion.

This has been verified by several researchers, the first being Myneni, who established from satellite observations that there had been a very significant greening of the planet between 1982 and 2015 (see Figure 41). Further studies [50,51,52,53,54,55] have shown that the increased CO<sub>2</sub> level also reduces water requirements of agriculture.

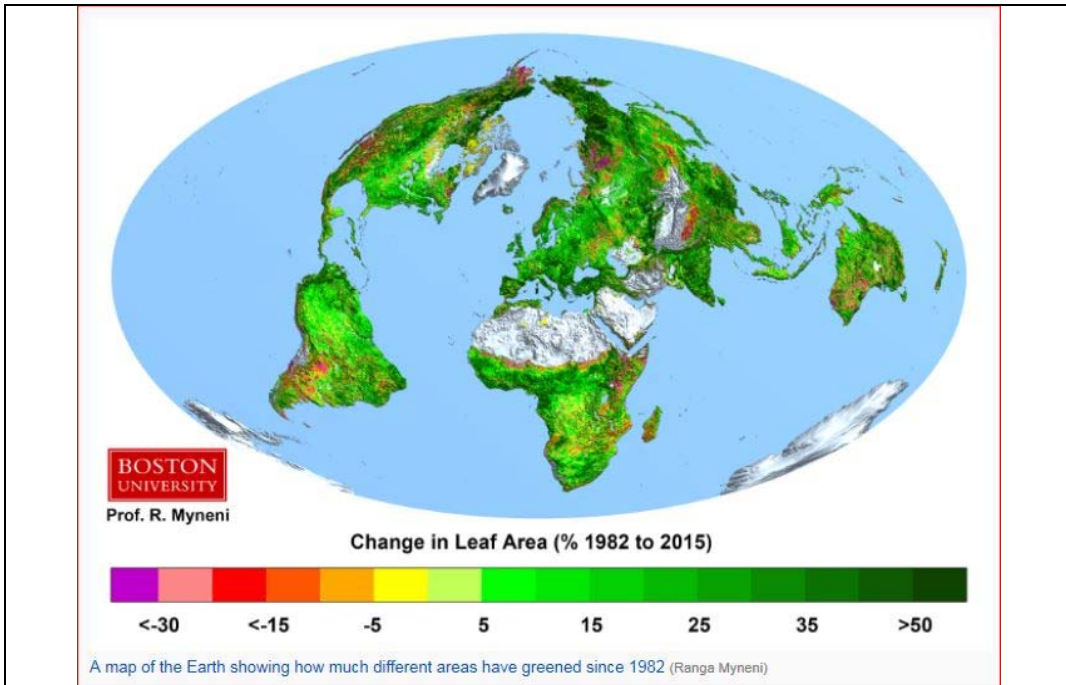


Figure 41: Pictorial representation of greening of the planet between 1982 and 2015, 70% of which is attributed to higher CO<sub>2</sub> levels. Sources [52].

Hence, far from being the “villain”, the increasing CO<sub>2</sub> level (which it should be noted, constitutes only 0.04% of the atmosphere) may actually be beneficial to the planet food chain in feeding 9-10 billion people in 2050.

Recent years have seen record global harvests, see for example for soya beans at <https://www.thegwpc.com/benefits-of-global-warming-us-forecasts-record-soyabean-crop/>. Wheat yields have more than doubled since 1970 in Europe, USA and China, see <http://www.fao.org/faostat/en/#compare>. However to these increased yields must also be ascribed more sophisticated plant breeding, optimization of plant nutrition and the general improvement in agronomic practice, though it can be shown that CO<sub>2</sub> enrichment has also contributed in latter years. Campbell et al [102] estimated the total increase in terrestrial gross primary production through increased photosynthesis at about 30% during the 20<sup>th</sup> century.

## Appendix: List of References

1. "Climate Change 2013: The Physical Science Basis", Working Group 1 contribution to the Fifth Assessment Report (AR5) of the IPCC.
2. "The Tropical Skies, Falsifying Climate Alarm", GWPF Note 17, 2019
3. "Satellite Bulk Tropospheric Temperatures as a Metric for Climate Sensitivity, John R Christy and Richard T McNider, *Asia-Pacific J Atmos Science*, 53(4), 511-518, 2017.
4. "The Science and Politics of Global Warming", a lecture by Prof Richard Lindzen, Alfred P Sloan Prof of Atmospheric Sciences, Emeritus, MIT, to the ICSF on May 4, 2017.
5. "Estimating Climate Sensitivity using Two-Zone Energy Balance Moels", JR Bates, *Earth and Space Science*, 3, 207-225, doi:10.1002/2015EA000154, 2016.
6. "The impact of recent forcing and ocean heat uptake data on estimates of climate sensitivity", by N Lewis & J Curry, *J. Climate*, doi:10.1175/JCLI-D-17-0667.1, in press.
7. "On the Observational Determination of Climate Sensitivity and its Implications", R Lindzen and Y-S Choi, *Asia-Pacific J Atmos Sci*, 47(4), 377-390, doi:10.1007/s13143-011-0023-x, 2011.
8. "Climate Models for the Layman", Judith Curry, GWPF Briefing 24, 2017.
9. See also: <https://principia-scientific.org/recent-co2-climate-sensitivity-estimates-headed-towards-zero/>.
10. Hourdin, F. et al (2017). The art and science of climate model tuning. *Bulletin of the American Meteorological Society*, March 2017. <https://doi.org/10.1175/BAMS-D-15-00135.1>
11. P. Voosen, 27 Oct 2016. Climate scientists open up their black boxes to scrutiny, *Science* **354** (6311), 401-402. [doi: 10.1126/science.354.6311.401].
12. "Irish Agriculture – A New Look at the Influences of Methane, Nitrous Oxide and Carbon Dioxide", a lecture by Prof William Happer, Prof of Physics, Emeritus, Princeton University, to the ICSF on June 1, 2017.
13. "Methane: The Irrelevant Greenhouse Gas", by Prof Tom Sheahan, MIT.
14. "A Guide to Understanding Global Temperature Data" by Roy W Spencer, University of Alabama in Huntsville (UAH), July 2016.
15. Satellite-based Temperatures of the Global Lower Atmosphere, University of Alabama in Huntsville (UAH), downloadable from [www.drroyspencer.com](http://www.drroyspencer.com).
16. "State of the Climate 2017", Prof Ole Humlum, GWPF Report 30, March 2018.
17. "Urbanization Bias I: Is it a negligible problem for global temperature estimates?", Ronan & Michael Connolly, *Open Peer Review Journal*.
18. "On the Validity of NOAA, NASA and Hadley CRU Global Average Surface Temperature Data and the Validity of the (US) EPA's CO2 Endangerment Finding", Wallace, D'Aleo and Idso, June 2017.
19. "Towards better Monitoring and Understanding of Climate Change – Estimates of Variability and Change in Atmospheric Temperature and Humidity" a lecture by Prof Adrian Simmons to the ICSF on July 12, 2017.
20. "European Summer Temperatures since Roman Times", *Environmental Research Letters*, 11 (2016) 024001, doi:10.1088/1748-9326/11/2/024001.
21. "Climate, History and the Modern World", HH Lamb, 1982 and 1995.
22. "The Little Ice Age and Medieval Warming in South Africa", by Tyson, Karlén, Holmgren, *South African Journal of Science*, 96, March 2000.
23. "Are cold winters in Europe associated with low solar activity?", by Lockwood et al, *Env Res Ltrrs*, 2010, DOI:10.1088/1748-9326/5/2/024001.

24. “North Atlantic variability and its links to European climate over the last 3000 years”, Paola Moffa-Sánchez & Ian R. Hall, *Nature Communications*, volume 8, article number: 1726 (2017), doi: 10.1038/s41467-017-01884-8.
25. “Climate Change Reconsidered II, Physical Science”, NIPCC, 2013.
26. “Tutorial Overview of Climate Science”, submitted by Profs Lindzen, Koonin and Happer to the District Court of Northern California, March 2018.
27. “ERA-CLIM2 outcomes boost NWP and climate work”, ECMWF Newsletter, No 155. Spring 2018, pp 6-7.
28. “CERA 20-C: A coupled reanalysis of the 20<sup>th</sup> century”, Laloyaux P, et al, *Journal of Advances in Modeling Earth Systems*, 2018, 10, pp 1172-1195.
29. “Recent UK Flooding is not unprecedented”, by Neil McDonald and Heather Sangster, *Hydrology and Earth System Sciences*, 21:1631-1650, June 2017.
30. “The Arctic Fallacy – Sea Ice Stability and the Polar Bear”, Susan Crockford, GWPf, 2015.
31. “State of the Polar Bear Report 2017”, Susan Crockford, GWPf Report 29.
32. “Arctic Sea Ice at its lowest extent for at least 1500 years” debunked by three recent scientific papers, see:  
<https://notalotofpeopleknowthat.wordpress.com/2018/02/21/arctic-sea-ice-extent-at-its-lowest-for-at-least-1500-years-debunked-by-three-scientific-papers/>.
33. Antarctic climate variability on regional and continental scales over the last 2000 years, Barbara Stenni et al, *Clim. Past*, 13, 1609-1634, 2017  
<https://doi.org/10.5194/cp-13-1609-2017>.
34. “Global Sea Level Reconstruction 1807-2010”, by Jevrejeva, Moore, Grinsted, Matthews and Spada, *Global and Planetary Change*, Vol 113, doi:10.1016/j.gloplacha.2013.12.004.
35. “A 500-Year Record of Sea Level from Goa, India”, Mörner N-A, *Journal of Coastal Research* 33: 421-434, 2017.
36. “Short-Term Tide Gauge Records from One Location are Inadequate to Infer Global Sea-Level Acceleration”, by Albert Parker and Clifford D. Ollier, *Earth Systems and Environment*, October 2017.
37. “Acceleration of European Mean Sea Level? A new insight using improved tools”, by Phil J Watson, *Journal of Coastal Research*, 2016.
38. “Twentieth Century Global Mean Sea Level Rise: Is the Whole Greater Than the sum of the Parts?”, Gregory, JM, et al, *J. Climate*, 26, 4476-4499, 2013, DOI: 10.1175/JCLI-D-12-00319.1
39. Irish Major Weather Events and Extremes as on Met Eireann website [www.met.ie](http://www.met.ie).
40. “A Brief Analysis of Extreme Weather Trends in Ireland in Recent Times”, Fintan Ryan submission to the Citizens’ Assembly, 2017.
41. “Urbanization Bias III, Estimating the Extent of Bias in the Historical Climatology Network Datasets” by Ronan and Michael Connolly, 2014, ref: <http://opri.net/opri-archive/climate-science/34/opri-article-climate-science-34.pdf>.
42. “The Influence of Ocean Variations on the Climate of Ireland”, by GD McCarthy, E Gleeson and S Walsh, 2015, Royal Meteorological Society, DOI 10.1002/wea.2543.
43. “Trends in Extreme Weather Events since 1900 – An enduring Conundrum for Wise Policy Advice”, Kelly MJ, *Journal of Geography and Natural Disasters*, Vol 6, Issue 1, <http://dx.doi.org/10.4172/2167-0587.1000155>.
44. “Climate-driven variability in the occurrence of major floods across North America and Europe”. Hodgkins, G.A. et al. (2017), *Journal of Hydrology* 552, 704–717, <http://dx.doi.org/10.1016/j.jhydrol.2017.07.027>.

45. EU data trend in forest fires: <https://www.eea.europa.eu/data-and-maps/daviz/burnt-forest-area-in-five-1#tab-dashboard-01>.
46. "A revival of Indian summer monsoon rainfall since 2002", by Qinjian Jin & Chien Wang, *Nature Climate Change* 7, 587–594 (July 2017), doi:10.1038/nclimate3348
47. "Characteristics of temperature change in China over the last 2000 years and spatial patterns of dryness/wetness during cold and warm periods", by Quansheng Ge, Haolong Liu, Xiang Ma, Jingyun Zheng & Zhixin Hao, Chinese Academy of Sciences, Beijing, June 2017.
48. Note on Drought in Cape Town:  
<https://notalotofpeopleknowthat.wordpress.com/2018/02/13/cape-towns-drought/>.
49. Note on Atlantic Hurricanes:  
<https://notalotofpeopleknowthat.wordpress.com/2017/11/12/review-of-2017-atlantic-season/#more-30777>.
50. "Climate Change Reconsidered II, Biological Impacts", NIPCC, 2014.
51. "Global Warming Versus Global Greening", Dr Matt Ridley, GWPF, October 2016.
52. "The Greening Earth", Prof Ranga B Myneni, Dept of Earth & Environment, Boston University, 2013.
53. Conclusion of letter to Nature of 6th April 2017 by J. E. Campbell et al
54. "Large historical growth in global terrestrial gross primary production", by Campbell et al, *Nature*, Vol 544, April 2017, DOI: 10.1038/nature22030.
55. Multiple references available on: [www.co2science.org](http://www.co2science.org).
56. Butler, C.J. "Global Warming - Man or Nature." *Weather and Agro-Environmental Management*, Proc. of AgMet Millennium Conference, Feb 2000, Dublin, Met. Eireann 68-77 <http://climate.arm.ac.uk/publications/global-warming-man-or-nature.pdf>.
57. "Harmonic Analysis of Worldwide Temperature Proxies for 2000 Years" by Horst-Joachim Lüdecke and Carl-Otto Weiss, *The Open Atmospheric Science Journal*, April 2017.
58. "Re-evaluating the Role of Solar Variability on Northern Hemisphere Temperature Trends since the 19<sup>th</sup> Century, Willie Soon, Ronan and Michael Connolly, *Earth Science Reviews*, 150, 409-452, 2015.
59. "Prediction of Solar Activity from Solar Background Magnetic Field Variations in Cycles 21-13", by Shepherd, Zharkov and Zharkova, *The Astrophysical Journal*, November 2014, doi:10.1088/0004-637X/795/1/46.
60. "Increased Ionisation supports growth of aerosols into cloud condensation nuclei" by H Svensmark et al. in *Nature Communications*, December 2017.
61. "A 250-year Drought Catalogue for the Island of Ireland (1765-2015)" by Noone et al, *International Journal of Climatology*, 37, (Supplement 1), pp 239-254, 2017, DOI: 10.1002/joc.4999.
62. "Cosmic rays, solar activity and changes in the Earth's Climate" by Stozhkov et al, *Bulletin of the Russian Academy of Sciences*, 2017, DOI: 10.3103/S1062873817020411.
63. "Another Perspective on Climate Change – Solar Influence, Cosmic Rays and Clouds", a lecture by Prof Henrik Svensmark to the ICSF on December 6, 2017.
64. Also see: [www.climateclips.com](http://www.climateclips.com).
65. "Grand Minimum of the Total Solar Irradiance leads to the Little Ice Age", by Habibullo Abdussamatov, *Journal of Geology & Geosciences*, Vol 2, Issue 2, 2013.
66. "Current long-term negative average annual energy balance of the Earth leads to new Little Ice Age", Abdussamatov H.I., *Thermal Science* 19 (Suppl 2), S279-S288.

67. "The new Little Ice Age has started" by H. I. Abdussamatov in Evidence Based Science 2016.
68. Professor Michael Lockwood ref: Environ. Res. Lett. 5 (2010) 024001.
69. "Harmonic Analysis of World-Wide Temperature Proxies for 2000 Years", Horst-Joachim Lüdecke & Carl-Otto Weiss, The Open Atmospheric Science Journal, 2017, 11, 44-53, Sci 47(4), 377-390, 2011.
70. "Solar turbulence in earth's global and regional temperature anomalies", Scafetta, N., Grigolini, P., Imholt, T., Roberts, J.A., West, B.J., 2004, Phys. Rev. E 69, 026303
71. "Natural climate variability, part 1: Observations versus the modeled predictions", by Scafetta et al, The International Journal of Heat & Technology September, Vol 35, ppS9-S17, special issue 1, Sept 2017, doi: 10.18280/ijht.35Sp0102.
72. "Natural Climate Variability, Part 2: Interpretation of the Post-2000 Temperature Standstill", by Scafetta, Mirandola and Bianchini, International Journal of Heat and Technology, Vol 35, Special Issue 1, Sept 2017, pp S18-S26, DOI: 10.18280/ijht.35Sp0103.
73. Shaviv N. J. & J. Veizer, 2003, National Geographical Society of America, Vol 13, Issue 7, pp 4-10.
74. "Variation of cosmic ray flux and global cloud coverage - a missing link in solar-climate relationships", Svensmark, H. & Friis-Christensen, E.. J. Atmos. Sol. -Terr. Phys. 59, 1225-1232 (1997).
75. "Increased ionization supports growth of aerosols into cloud condensation nuclei", Svensmark, H. Nature Communications December 2017 8: 2199.
76. "Heartbeat of the Sun from Principal Component Analysis and prediction of solar activity on a millennium timescale", Zharkova et al. Nature Scientific Reports **2015** 5:15689 | DOI: 10.1038/srep15689.
77. "Natural Climate Oscillations and the Interpretation of the Post-2000 Temperature Standstill", lecture by Nicola Scafetta to the ICSF on February 14, 2018.
78. "Discussion on climate oscillations: CMIP5 general circulation models versus a semi-empirical harmonic model based on astronomical cycles", by N. Scafetta, Earth-Science Reviews 126, 321-357, 2013.
79. "Low cloud properties influenced by cosmic rays", by Marsh, N. and Svensmark, H. 2000. Phys. Rev. Letts 85, 5004-5007.
80. "Galactic cosmic ray and El Niño-Southern Oscillation trends in International Satellite Cloud Climatology project D2 - low cloud properties", by Marsh, N. and Svensmark, H. 2003.. J. Geophys. Res. 108, 4195.
81. "The influence of cosmic rays on terrestrial clouds and global warming", by Palle, E. and Butler, C.J., 2000.. Astronomy and Geophysics 41, 18-22.  
<http://star.arm.ac.uk/~ambn/341epb.pdf>.
82. "The possible connection between ionization in the atmosphere by cosmic rays and low level clouds", by Palle, E., Butler, C.J. and O'Brien, K. 2004. J. Atmospheric and Solar Terrestrial Physics 66, 1779-1790. <http://www.arm.ac.uk/preprints/433.pdf>.
83. "The Cosmic Ray Link – from Geological Timescales to 20<sup>th</sup> Century Climate Change", a lecture by Nir Shaviv to the ICSF on April 9, 2018.
84. "Climate-change-driven accelerated sea-level rise detected in the altimeter era", by RS Nerem et al, [www.pnas.org/cgi/doi/10.1073/pnas.1717312115](http://www.pnas.org/cgi/doi/10.1073/pnas.1717312115), January 2018.
85. "A Comparison of the Early 21<sup>st</sup> Century Drought in the US to the 1930s and 1950s Drought Episodes", by RR Heim Jr, pp 2579-2592, DOI:10.1175/BAMS-D-16-0080.1, Dec 2017.



86. Comparison of ECS Estimates, see:  
<https://science.house.gov/sites/republicans.science.house.gov/files/documents/HH-RG-115-SY18-WState-PMichaels-20170228.pdf>.
87. "Examination of space-based bulk atmospheric temperatures used in climate research", by JR Christy, RW Spencer, UAH, Intl Journal of Remote Sensing, Vol 39, No 11, pp3580-3607, <https://doi.org/10.1080/01431161.2018.1444293>.
88. "Comparing the current and early 20<sup>th</sup> century warm periods in China", Willie Soon, Ronan and Michael Connolly et al, Earth-Science Reviews 185 (2018), <https://doi.org/10.1016/j.earscirev.2018.05.013>.
89. "Mass Balance of the Antarctic Ice Sheet from 1992 to 2017", by Andrew Shepherd et al, IMBIE Team, June 2018, Analysis, <https://doi.org/10.1038/s41586-018-0179-y>.
90. "Weather, Climate and Human Affairs", a book of essays and other papers, by HH Lamb. First published 1988.
91. "A 305-year continuous monthly rainfall series for the island of Ireland (1711-2016)", by Conor Murphy et al, Clim. Past, <https://doi.org/10.5194/cp-14-413-2018>.
92. "BBC mislead public with fake heat record scares", by Paul Holmwood, July 2018, <https://notalotofpeopleknowthat.wordpress.com/tag/heatwave/>.
93. "Managing the Risks of Extreme Events and Disasters to Advance Climate Change Adaptation", SREX Report, IPCC, 2012.
94. "An updated review about Carbon Dioxide and climate change", Fleming RJ, Env Earth Sciences (2018), 77:262, <https://doi.org/10.1007/s12665-018-7438-y>.
95. "Reconstruction of Four Centuries of Temperature-Induced Coral Bleaching on the Great Barrier Reef", NA Kamenos & SJ Hennige, Frontiers in Marine Science, Aug 2018, Volume 5, Article 283, doi: 10.3389/fmars.2018.00283.
96. "Sea Level and Climate Change", Special Report by Judith Curry, Climate Forecast Applications Network, November 2018.
97. "Global Warming of 1.5°C: An IPCC Special Report on the impacts of global warming of 1.5°C above pre-industrial levels and related global greenhouse gas emission pathways, in the context of strengthening the global response to the threat of climate change, sustainable development, and efforts to eradicate poverty", WMO, Geneva, Switzerland, 2018, <https://www.ipcc.ch/sr15/>.
98. "Deficiencies in the IPCC's Special Report on 1.5 Degrees – Revised and Updated Version", a paper by Prof J Ray Bates, published by the GWPF, January 2019, see [www.thegwpf.org/content/uploads/2019/01/Bates-2018b.pdf](http://www.thegwpf.org/content/uploads/2019/01/Bates-2018b.pdf).
99. Draft paper on "Relative Forcings of Greenhouse Molecules", by W A van Wijngaarden of York University, and W Happer of Princeton University.
100. "The Lukewarm Alternative to the IPCC", an ICSF Lecture by Dr Patrick J Michaels of the CATO Institute, on November 29, 2018.
101. "Perceptions and Reality about Climate Change", PJ Michaels, January 2019, see <https://www.cato.org/blog/perceptions-reality-about-climate-change>.
102. "Large Historical Growth in Global Terrestrial Gross Primary Production", Campbell et al, Nature, Vol 544, April 2017, DOI: 10.1038/nature22030.
103. Retraction Note: "Quantification of ocean heat uptake from changes in Atmospheric O<sub>2</sub> and CO<sub>2</sub> Composition", Nature, 573, 614 (2019).
104. Personal Communication to DCC on Irish Sea Levels, by Peter O'Neill, University College, Dublin.
105. "What Caused Hurricane Lorenzo?", Prof Ray Bates, GWPF Note 19, October 2019, see <https://www.thegwpf.org/content/uploads/2019/10/Lorenzo-1.pdf>.