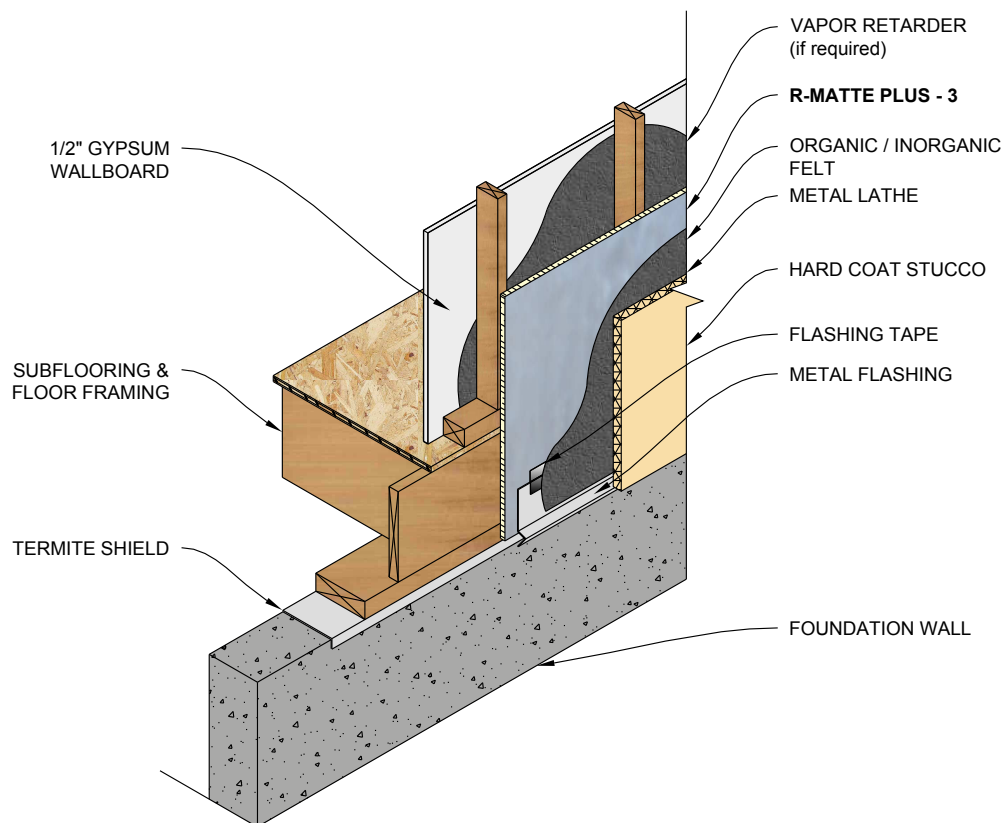


R-Matte® Plus-3: Insulation for the Building Envelope

Exterior Stucco Application

R-Matte® Plus-3 may be used as the insulative sheathing under hard coat stucco finishes. It may be secured to the studs with bugle-head screws, galvanized roofing nails or common-nails driven through cap washers. Cover the R-Matte® Plus-3 with a suitable separation layer such as an organic or inorganic felt. Then, attach conventional metal wire lath and expansion joints with appropriate fasteners as dictated by the local Building Code. Rmax does not recommend the direct attachment of stucco, such as Portland cement or polymer-modified types, directly to the face of the insulation product. Consult stucco manufacturers for details.

Refer to R-Matte® Plus-3 data sheet for additional application/installation, compliances, thermal and physical properties, limitations and warnings.



Notes:

1. Stud walls must be properly braced for lateral loads according to the requirements of local Building Codes.
2. Either the white matte or reflective surface can be facing out. Additional thermal value achieved if reflective surface faces an existing air space.

Warranty: See Rmax "Sales Policy" and applicable warranties for terms and conditions. Rmax does not assume any responsibility or liability for the performance of any products other than those manufactured by Rmax. **NOTE: All Rmax products must be tarped, placed on skids and kept dry before and throughout construction.**

2017-12