



Stolt Tankers



Stolthaven
Terminals



Stolt Tank
Containers



Stolt-Nielsen
Gas



Stolt Bitumen
Services



Stolt Sea Farm

Digital Ship

3rd Maritime CIO Forum - Rotterdam
29 September 2016 - Hilton Hotel, Rotterdam

I-Shipping RoadMap

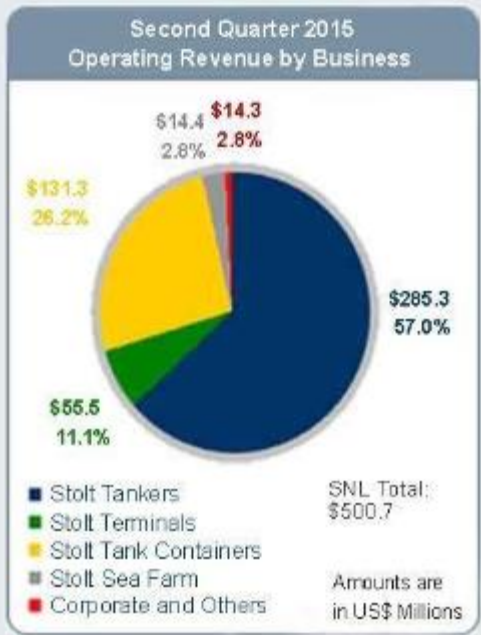
Presented by: Jose Milhazes

Stolt-Nielsen - Global Manager
Stolt Tankers B.V - Business Process Manger SNSO

j.milhazes@stolt.com

Mobile: +31 6 21507845

<http://www.stolt-nielsen.com>



Stolt Tankers Overview

- Total Operating – 157 Ships
- Total Shipmanager – 89 Ships
- Shipowning Global presence in:
 - Rotterdam; Singapore; Manila; Houston

- Total assets of \$4.0 Billion
- 2Q15 Net Profit of \$42.8 Million
- Tanker fleet of 2.5 Million DWT
- Storage capacity of around 4.4 Million cbm
- Tank container fleet of around 35,000 tanks
- Capacity of 5,400 tonnes of Turbot per year and 1000 tonnes of Sole per year

Agenda:

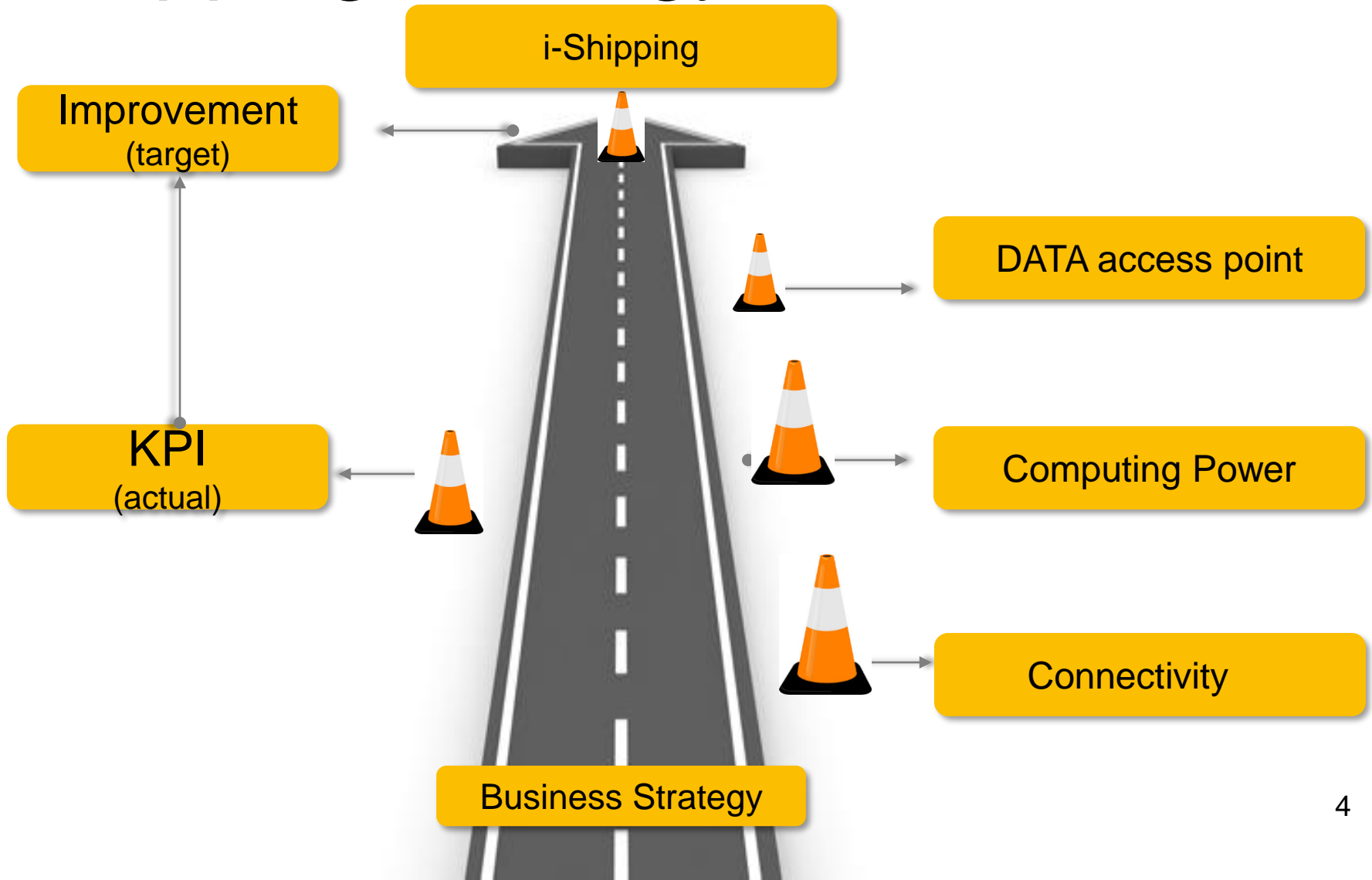
 1 i-Shipping Strategy Structure

 2 What now?

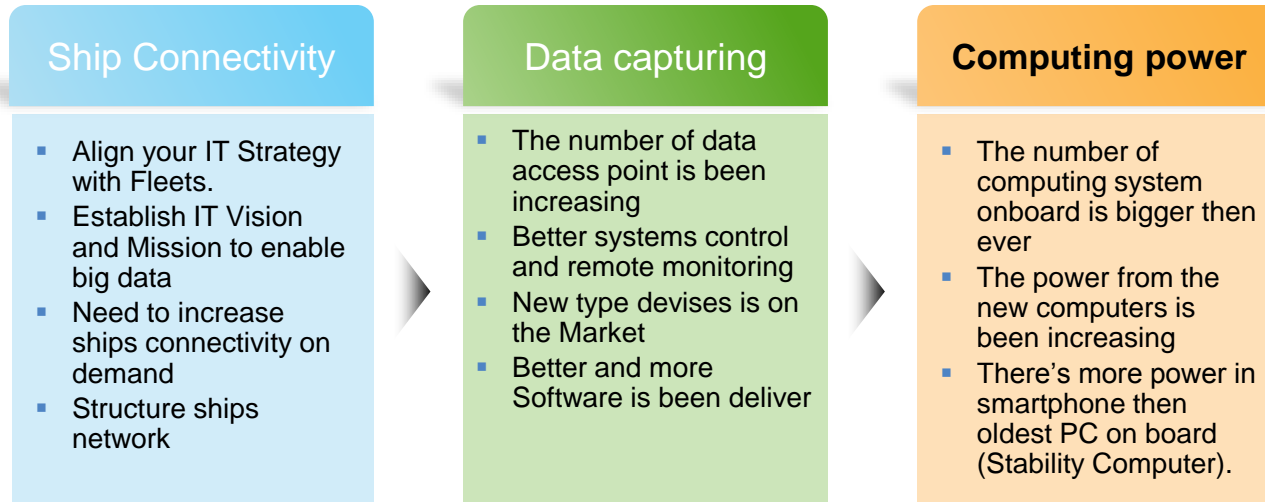
 3 Timely requirement

 4 Business case

i-Shipping Strategy Structure



What now:



Others

- Define and Deploy good Project implementation plan
 - Set up a Management SC to follow project implementation
 - Involve Supplier in the project implementation

Timely requirements

- Improve systems connectivity and interaction
- Improve systems intelligence
- Allow systems to take action
- Having the system Determine environment hazards conditions
- Have the system provide continuous risk assessment

Safety

- Improve system interaction to automate blockage
- Provide online alerts of environment conditions to crew
- Crew Health assessment
- Deliver system interactions within shore facilities
- Minimize ships waste
- Introduction of formal Crew Welfare services

Health & Environment

- Improve activity's automate operations log
- Improve algorithms to stream Cargo Operations
- Improve Cargo continuous monitoring
- Improve online interaction with cargo handling stakeholders
- Improve systems interaction to avoid cargo lost and improve operation performance

Stream Operations

- Improve system self deliver complex automation ship predefine performance
- Automate individual equipment's performance as required
- Better plug and play equipment's solutions allowing ship continuous improvement
- Support continuous systems improvements to improve ship/fleet performance.

Performance

Business case / ROI:

- Minimize accidents in severity and number
- Improve ship performance reducing time/money waste
- Reduce Shipmanagement FTE's
- Reduce company A&G cost
- Reduce number of crew.

Thank you

Questions?

Jose Milhazes
j.milhazes@stolt.com