



JACQUELINE • CULLEN

## INTRODUCTION

With diverse inspiration ranging from the clean and structural lines of minimalist architecture, to a placid sky ripped open by a slash of lightning, Jacqueline Cullen's darkly sensual contemporary Whitby jet jewellery seduces with its luxurious cascades of diamonds. Flowing from hand carved fissures or glittering diamond coated panels, the jewellery highlights the drama found between light and shade. Super lightweight, this soft and sensual heritage material lends itself perfectly to dramatic sculptural but eminently wearable jewellery with a classic but darkly edgy glamour.

Whitby jet is a rare 180 million year old fossil made popular by Queen Victoria and sourced from the North Yorkshire coast in the U.K. Jacqueline Cullen's Whitby based supplier abseils down the cliffs on ropes to source raw specimens in disused mines and caves. All our collections are entirely hand made in our ateliers based in Whitby and Central London - all fissures and crevices are hand carved by Jacqueline herself.



## THE ATOMIC COLLECTION

A beautiful, innovative and comprehensive new collection featuring a pure spherical shape embedded with tiny twinkling black diamonds that burst and flow out of hand carved crevices. With beautiful hand-made 18ct gold details, this collection encompasses dramatic and bold earrings, stacking bracelets and necklaces and a ring set that can be mixed and matched in different configurations.



## ATOMIC MULTI CASCADE EARRINGS

With their shoulder skimming drama and cascading multiple spheres split open to release tiny black diamonds, these hand carved lightweight Whitby jet earrings have both impact and glamour

JC/E/AT/1



---

● ATOMIC DISCO BALL EARRINGS

Lightweight and dramatic Whitby jet earrings with a superb swinging movement the hundreds of embedded black diamonds shooting out pinpricks of light from the hand carved surface

JC/E/AT/2



JC/E/AT/3



JC/E/AT/4



JC/S/AT/1

### ATOMIC MULTI CASCADE AND DISCO BALL EARRINGS (MINI)

With all the drama and impact of the Atomic multi cascade and disco ball earrings packaged into a day to day version – dress up or dress down or maybe pair with our classic and elegant Atomic spherical studs





JC/N/AT/1



JC/N/AT/2



JC/N/AT/SD1

---

## ATOMIC STACKING NECKLACES

Enliven a classic LBD or bring a touch of edgy glamour to an open neck white shirt with our Atomic stacking necklaces – with adjustable lengths these necklaces really are go anywhere and can be mixed with our pendant featuring a 0.7 carat glittering solitaire black diamond



JC/B/AT/1



JC/B/AT/2



JC/B/AT/SD1

ATOMIC STACKING  
BRACELETS

Our stacking Atomic bracelets featuring discreet hand carved glittering spheres on 18CT gold chain are eminently wearable and luxuriously playful – wear solo or mix and match to build up texture and pattern – and not forgetting the solitaire black diamond which is simplicity itself





JC/R/AT/1



JC/R/AT/2



JC/R/AT/3



JC/R/AT/SD1



JC/R/AT/WR1

## ATOMIC STACKING RING SET

Introducing our Atomic stacking ring set – each ring is a work of wearable art or mix and match into a personalised statement



## THE FACETED COLLECTION

Inspired by the sharp angles and dynamic lines of modernist architecture, the hand formed Faceted collection has asymmetrical panels washed with hundreds of tiny black diamonds creating a chiaroscuro effect highlighting the drama found between light and shade.

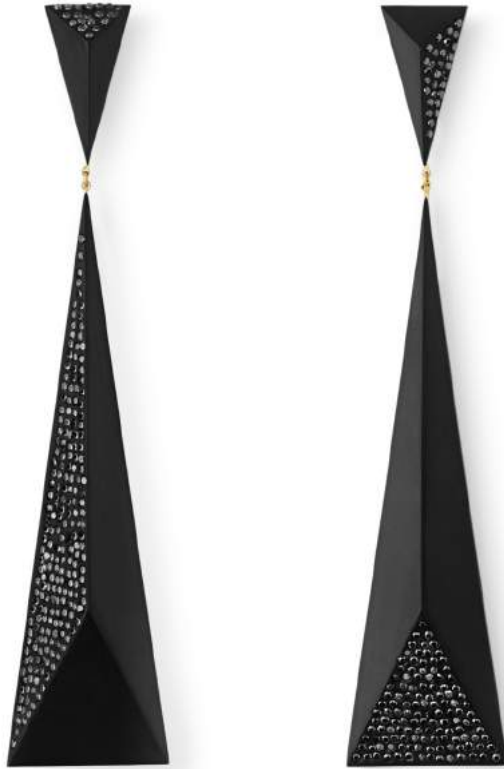


## FACETED CUFF AND BRACELET

If you are looking for a dynamic statement piece, then there is nothing like this hand-cut Faceted cuff with its dynamic, angular edges and asymmetrical panels of light embedded with over 6 carats of tiny black diamonds. This flexible cuff with its 18kt gold catch hugs and wraps itself sensually around the wrist.

Our faceted bracelet offers all the glamour and impact of the full-size cuff but in an everyday, wearable size.

JC/B/F/1



---

FACETED DROP EARRINGS

Dramatically angular and incredibly lightweight, the asymmetrical panels glimmer and shine with hundreds of embedded tiny black diamonds which come alive as these shoulder touching earrings swing and sway with every movement.

JC/E/F/1

JC/E/F/2



---

GOLD TOPPED FACETED  
EARRINGS AND NECKLACE

These eminently wearable faceted earrings and drop necklace, with their 18ct gold triangular tops are the perfect accessories to go from day to night. Asymmetrical panels of twinkling black diamonds add an edgy and darkly stylish glamour.



JC/N/F/1



JC/N/F/2



JC/R/F/1



JC/S/F/1

## FACETED NECKLACES, STACKING RINGS AND STUDS

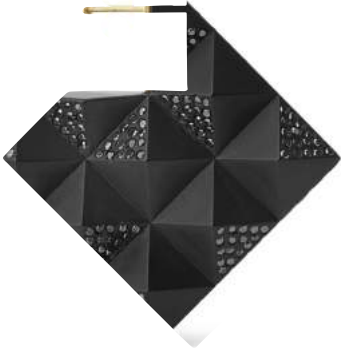
Lightweight and perfect for everyday wear, these stackable faceted necklaces studded with tiny black diamonds hang from a light-reflecting 18ct gold diamond trace chain, with a small but mighty glamorous presence.

Pair with a duo of our stacking faceted rings and on hand made 18ct gold shanks or our mismatched angular studs.



## THE PYRAMID COLLECTION

Inspired by Italian architect Carlo Scarpa and the chevron details of Brion Altvole, the Pyramid collection is constructed by hand from hand-cut Whitby jet units embedded with opposing panels of shimmering black diamonds. Bold, dynamic and graphic with a strong silhouette, the double-sided earrings, sinuous bracelet and pointed studs are all time classics.



JC/E/PY/1

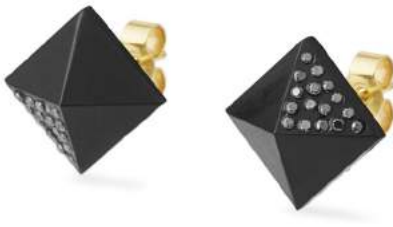


DOUBLED SIDED PYRAMID  
EARRINGS AND STUDS



JC/S/PY/1

Innovative and dynamic with a strong silhouette, these large but supremely lightweight double-sided Pyramid earrings inspire awe and desire from every angle. For extra edge glamour, why not pair a or mismatch with one of our 18ct gold lined pointy or square Pyramid studs?



JC/S/PY/2





## PYRAMID BRACELET

Our studded Pyramid bracelet slinks around the wrist like a sinuous, darkly glamorous snake with the shiny alternating panels of twinkling black diamonds giving this bracelet a punky attitude.

JC/B/PY/1



JC/N/PY/1



JC/N/PY/2



JC/R/PY/1

## PYRAMID NECKLACES AND RING

Everyday glamour epitomised! The stackable Pyramid bar and solo stud necklace will enliven any open necked short t-shirt with their glitter diamond fascia, and also effortlessly take you into the night with a crossover cocktail appeal.

Why not pair with our classic solo stud Pyramid ring with 18ct gold shank?



Studio E8  
Cockpit Arts  
Northington Street  
London  
WC1N 2NP  
UK

[www.jacquelinecullen.com](http://www.jacquelinecullen.com)  
[info@jacquelinecullen.com](mailto:info@jacquelinecullen.com)  
+44 (0) 7989 470246

Portrait photography by Mark Read  
Product shots by Shoot Solutions