

# Bryan County Mega Site

U.S. Highway 280 | Bryan County



## Regional Assets

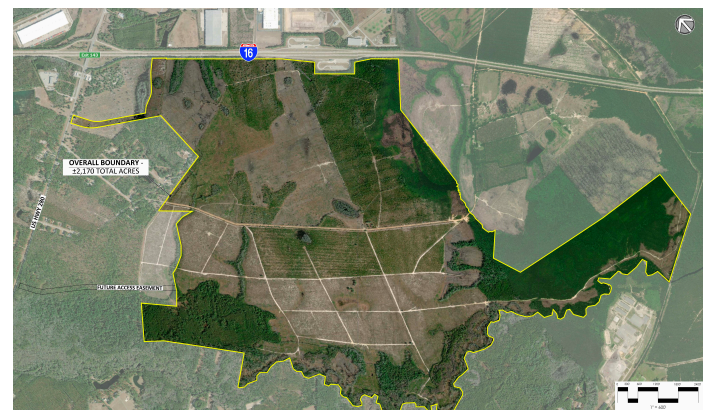
- Immediate access from I-95 and I-16 to 250 major metro areas including Atlanta, Birmingham, Charlotte, Memphis, and Orlando
- Home to Port of Savannah, the single largest and fastest-growing container terminal in the U.S. with two Class I rail facilities on site
- Savannah/Hilton Head International Airport offers 32 daily direct flights including Atlanta, Chicago, New York, Dallas, and Washington D.C.
- 453,000+ workforce within 60 mile radius
- 350+ military exits per month from Ft. Stewart/Hunter Army Airfield offer supplemental workforce solution
- Georgia Southern University has 26,000+ students and offers industry-specific programming including a B.S. in Manufacturing Engineering

## Property Specifics

- 2,170 Total Acres
- Interstate 16 Adjacent
- New Temporary Access Road Has Been Constructed
- Draft Wetlands Permit Has Been Obtained
- Rail Service Provided By Georgia Central Shortline (Connects To CSX In Savannah And Norfolk Southern Near Macon)
- All Industrial Utilities Adjacent
- Extensive Due Diligence Reports Available
- Military Zone State Job Tax Credits
- Freeport Exemption For All Four Classifications Of Inventory, Including E-Commerce

## Contact

Anna Chafin  
CEO, Development Authority of Bryan County  
anna.chafin@bryan-county.org  
(912) 653-4967



Savannah Harbor-Interstate 16 Corridor  
Joint Development Authority

BRYAN • BULLOCH • CHATHAM • EFFINGHAM

savannahjda.com