

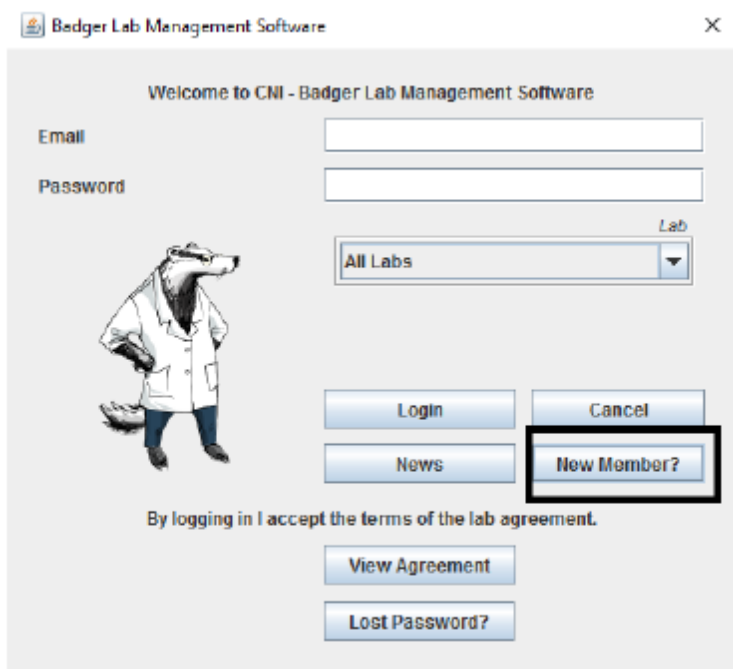
## Installation instructions:

1. Before registering to 'Badger' please subscribe to our Newsletter



Account\_form\_for\_  
Badger.docx

2. Fill out '[Account\\_form\\_for\\_Badger.docx](#)' and send it to [cnicleanroom@columbia.edu](mailto:cnicleanroom@columbia.edu).
3. Install the Java Runtime Environment from the [Oracle website](#).  
<http://www.oracle.com/technetwork/java/javase/downloads/index-jsp-138363.html>  
Click on Java Download and choose the file compatible with your operation system that has the extension "exe".
4. Install and Log-in to [Badger](#) system:  
<http://columbia.badgerlms.com/badger/etc/badger.jnlp>
5. New member – click on new member:



When you enter the PI Account number make sure it is in this format:

**Unit Department PC BusUnit Project Activity Initiative Segment**

**Examples:**

COLUM 1234567 SPONS GG123456 01 12345 SMITH1

COLUM 1234567 GENRL UR123456 01 00000 00000000

CNI accounts may have another suffix. Ask the cni clean room staff for assistance at [cnicleanroom@columbia.edu](mailto:cnicleanroom@columbia.edu).

You can search your PI name in the system by the 2 first letters of the last name.

Once your account is activated you'll receive an email confirmation.

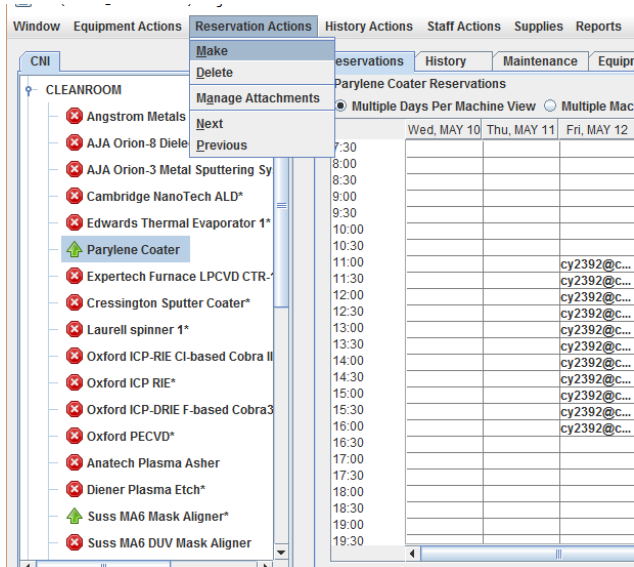
6. To view equipment status, tool reservations, and shutdowns please see the [dashboard](#) page.

**Dashboard:** <http://columbia.badgerlms.com/badger/DashboardCNI.html>

**Use Instructions:**

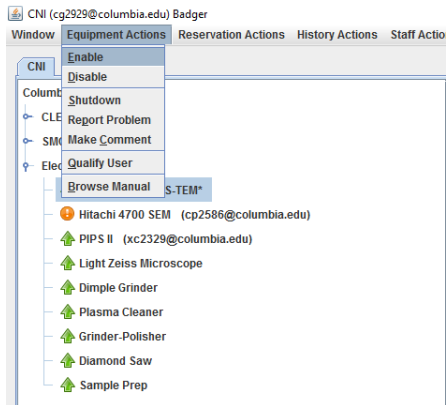
**Reservation:**

To make reservation in Badger click on the lab and the machine you're interested in using. Mark the times you wish to reserve on the calendar, click on "Reservation Actions" and "Make".



## Enable/Disable:

In order to use an equipment you are certified on please go to “Equipment Actions” and click on Enable. Please note that you cannot enable a tool that is down unless you have special privileges on the tool. When your session is complete disable the tool. If you forget to disable the tool please send an email as soon as possible to [cnicleanroom@columbia.edu](mailto:cnicleanroom@columbia.edu).



## Report a Problem:

To report a problem please go to Equipment Actions, Report a Problem. You'll be able to see the information on the maintenance tab:

CNI (na2661@columbia.edu) Badger

Window Equipment Actions Reservation Actions History Actions Staff Actions Supplies Reports Utilities Help

Enable  
 Disable  
 Shutdown  
 Report Problem  
 Make Comment  
 Qualify User  
 Browse Manual

Edwards Thermal Evaporator 1\*  
 Parylene Coater  
 Expertech Furnace LPCVD CTR-1  
 Cressington Sputter Coater\*  
 Laurell spinner 1\*  
 Oxford ICP-RIE CI-based Cobra II  
 Oxford ICP-RIE\*  
 Oxford ICP-DRIE F-based Cobra3  
 Oxford PECVD\*  
 Anatech Plasma Asher  
 Diener Plasma Etch\*  
 Suss MA6 Mask Aligner\*  
 Suss MA6 DUV Mask Aligner

Reservations History Maintenance Equipment Status Staff Charges

Parylene Coater Maintenance Record

Unresolved  
 Resolved

Comments  
 Problems  
 Shutdowns

YYYYMM/DD

From: 2017 / 2 / 9

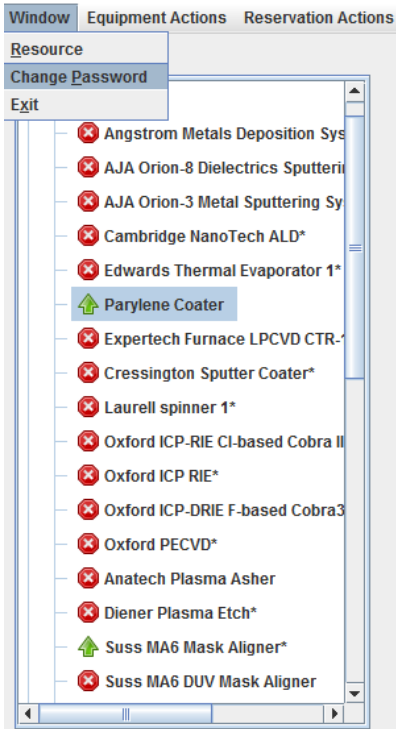
To: 2017 / 5 / 10

Search

Resolved?	Type	Time Submitted	Submitter	Subject
Showing 0 record(s)				

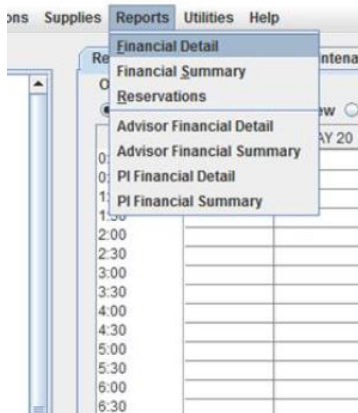
## Change Password:

To change your password go to: Window and then Change Password.

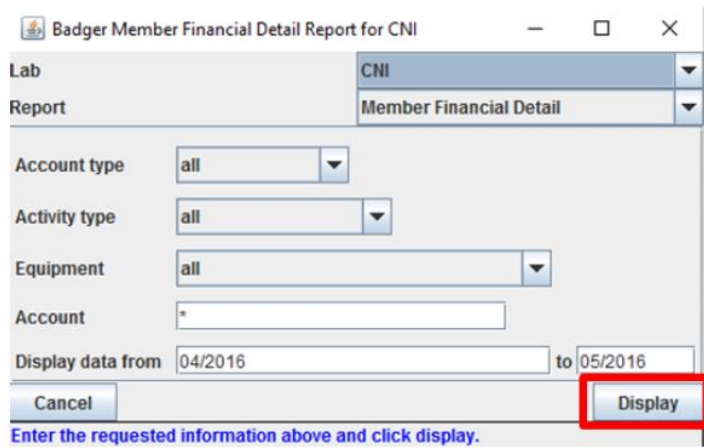


## View Reports:

To view your activity report and financial information click on Reports and then Financial Detail.



Select the dates to display and a detailed report will be displayed.



Badger Member Financial Detail Report for CNI

Lab: CNI

Report: Member Financial Detail

Account type: all

Activity type: all

Equipment: all

Account: \*

Display data from: 04/2016 to 05/2016

Buttons: Cancel, Display

Enter the requested information above and click display.

For more information please visit Badger [website](http://www.badgerlms.com/):

<http://www.badgerlms.com/>