



The Greater Santa Fe Fireshed Coalition
Wednesday, July 17, 2024 | Q3 Quarterly Meeting
Tijeras Field Tour

Attendance

Forest Stewards Guild	Carlos Saiz, Gabe Kohler, Maya Hilty, Alyssa Mineau
NM Forest & Watershed Restoration Institute	Alejandro Collins
NM Forestry Division	Abigail Plecki, Lawrence Crane
Pueblo of Tesuque	Chris Tafoya, Joshua Dasheno, Joseph Abeyta, Ryan Swazo-Hinds
Santa Fe Conservation Trust	Ariel Patashnik
Santa Fe Fire Department	Porfirio Chavarria
Santa Fe Watershed Association	Mori Hensley
US Forest Service	Brent Baca, Alfred Garcia, Shawn Martin, Korey Largo, Steve Romero

Agenda & Notes

Meeting called to order at 09:05.

Partner Updates

Forest Stewards Guild	<ul style="list-style-type: none">• The summer FSYC is up and running, gearing up to hire our fall FSYC, doing another small Rx winter crew.• Helping with Glorieta Rx outreach.• Southwest Fire Ecology Conference this November.• The Guild has continued to do home hazard assessments, and has integrated the fire department into the system with newer ESRI tools like Field Maps.• Alyssa will be leaving in August, and her role will be taken over by Maya.
NM Forest & Watershed Restoration Institute	<ul style="list-style-type: none">• Alejandro Collins is new to the NM Forest & Watershed Restoration Institute, and will be filling in for Alan Barton when the need arises.
NM Forestry Division	<ul style="list-style-type: none">• Entering cycle 3 of CWDG funding.• Collaborating with Forest Service, BLM, Game & Fish, and State Forestry to undertake large landscape-scale projects on private land to complement work on the national forest side.• Upcoming projects: Highway 337 and Highway 55, with plans to extend 337 north to I-40.• Several new hires in Santa Fe.• Hotshots are trying to get up and running, with hiring efforts in Vegas.• Administrative changes and efforts to initiate the Cedro project.• Potential need for a video of a masticator in action for public knowledge.

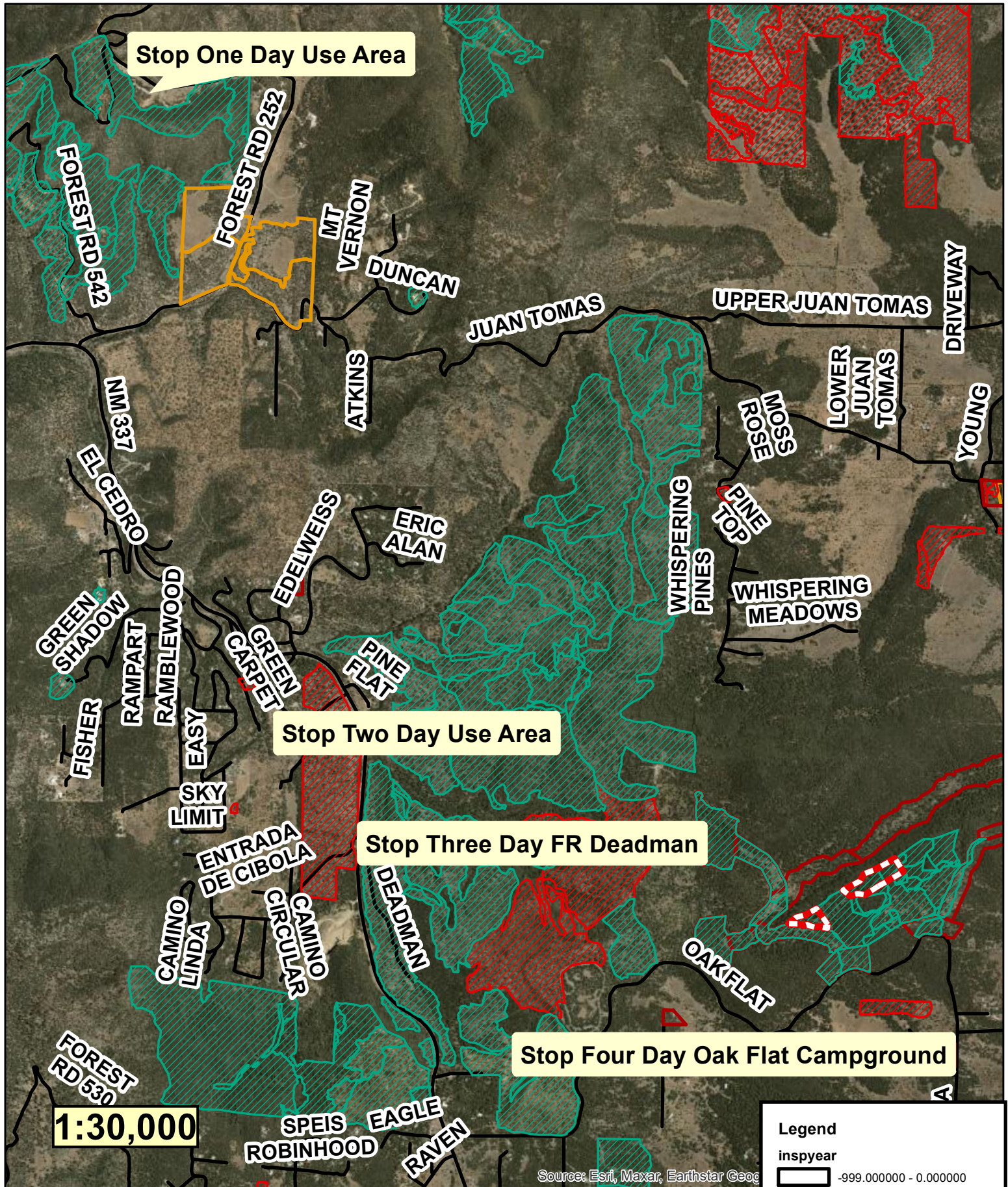


The Greater Santa Fe Fireshed Coalition

Pueblo of Tesuque	<ul style="list-style-type: none">• New staff members starting.• Preparing for some prescribed burns.• Established 4 water monitoring sites in the Santa Fe National Forest.• Submitted a proposal to the National Forest Foundation.
Santa Fe Conservation Trust	<ul style="list-style-type: none">• The State of NM has funds from the Forest Service to assist landowners interested in forest legacy conservation easements. Please inform Ariel about any interested landowners. Landowners receive a portion of the value of the development rights.
Santa Fe Fire Department	<ul style="list-style-type: none">• Conducting home assessments and exploring ways to help with access to insurance.• Conducted the WiRe study, sent out 900 surveys, received 400 responses, with data analysis expected this fall.• Creating a committee to conduct the WiRe study in the Fireshed landscape.
Santa Fe Watershed Association	<ul style="list-style-type: none">• Gearing up for fall field trips.• Continuing to provide field trips into the watershed for adults, colleagues from NFF joined a recent hike, and FSG will join in a future hike.
US Forest Service	<ul style="list-style-type: none">• Prescribed Fire Training Center is organizing an agency workshop in October.• Aiming for prescribed fire in key WUI areas, with a goal of 800 acres by the end of the year.• North Sandia fuels reduction project is in progress, with planned development fuels treatment.• Entering Phase 4 of project, resuming mastication this fall for 936 acres. Completed 914 acres last year.• North Sandia fuels reduction will cover approximately 3000 acres.• Positive public feedback on the work in the Cibola Forest. Conversations in the field have been the best way to garner interest and support.

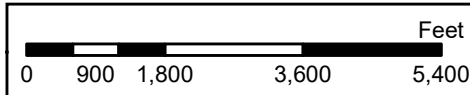
Meeting adjourned at 10:05.

Next meeting: October 17, 2024



Georeferenced Map Map Created by L.R.Crane

Date: 6/27/2024 Time: 2:22:09 PM



Datum: NAD83 Projection: UTM Zone 13N
No warranties are made regarding the accuracy of this data.
Produced by NM EMNRD Forestry Division, Timber Forester

Legend

insyear

- 999.000000 - 0.000000
- 0.000001 - 8.000000
- 8.000001 - 12.000000
- 12.000001 - 17.000000
- 17.000001 - 24.000000
- All_NM_Roads_RGIS_2021



Cedro Landscape Restoration Project Environmental Assessment (February 2017)

Proposed Action

The Sandia Ranger District of the Cibola National Forest and Grasslands (NF&NG) proposes the following actions to improve conditions in the Cedro Landscape Restoration Project:

1. Vegetation treatments, including individual tree selection and temporary regeneration openings, thinning, and mastication;
2. Fuelwood gathering;
3. Prescribe burning in certain forest types;
4. Improvement of riparian areas;
5. Treatment of invasive plant species, using various methods;
6. Closure of the analysis area to cross-country non-pedestrian travel;
7. Closures of unauthorized roads and trails (Decommission 6.43 miles of trail);
8. Relocations of sections of trails (10.23 miles); Construction of trails (8.03 miles);
9. Decommissioning of Deadman Recreation Area and NFSR (National Forest System Road) 515 into the recreation area; and
10. Installation of fire rings within designated camping corridors.

Need for the Proposal

The proposed analysis area encompasses approximately 18,756 acres. The proposed invasive plant species treatments and proposed trail work would occur within the entire analysis area. The vegetation restoration treatments and scenery management would occur on 13,175 acres within the analysis area.

The purpose of the project is to restore the ecosystem to the desired conditions. High tree density and severe competition have created conditions compromising overall forest health, wildlife habitat, scenic quality, and leading to an increase in the likelihood of uncharacteristic wildfire.

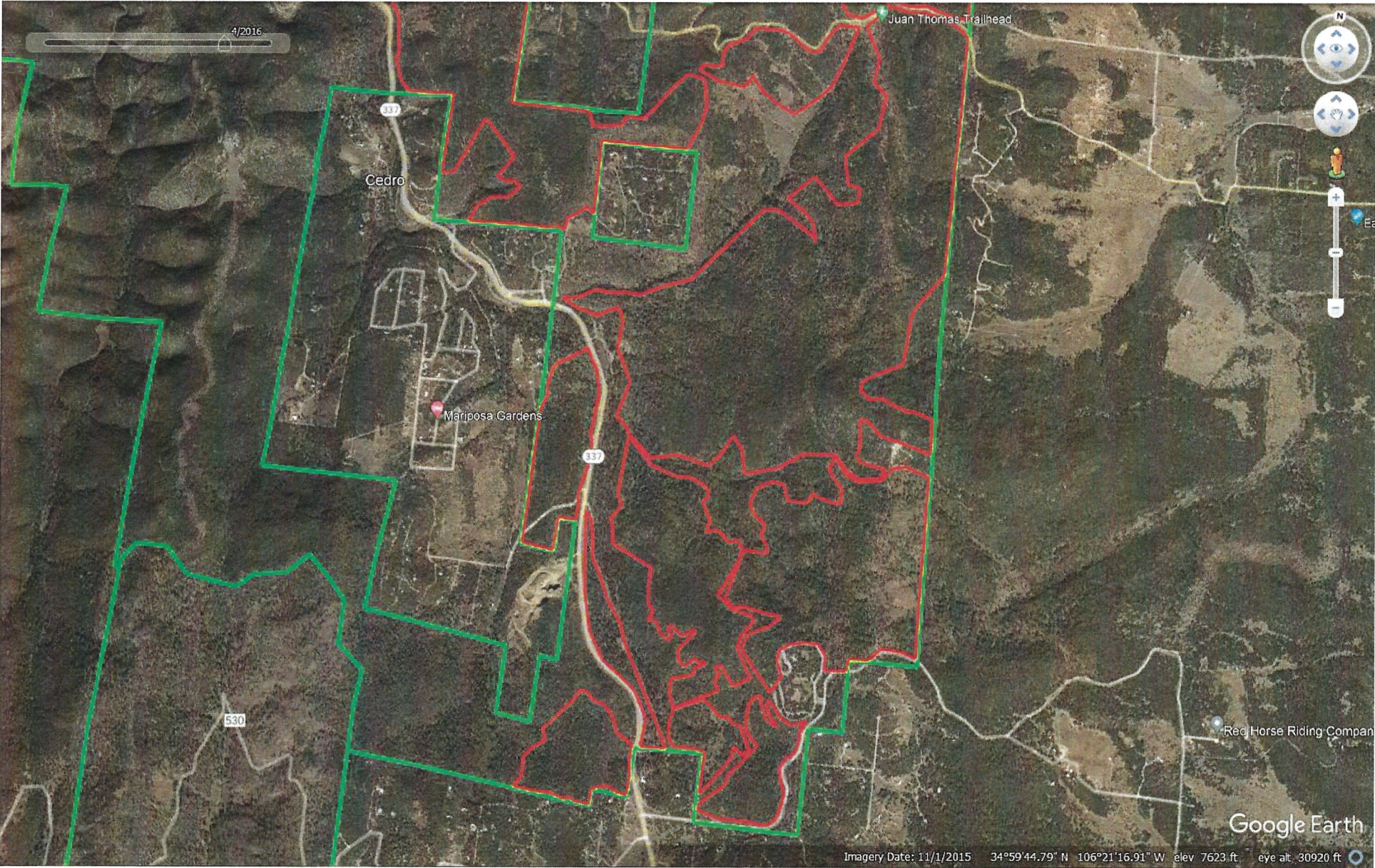
The old and current road system has altered the hydrology and reduced the floodplain of the Cedro Creek Watershed. This has increased erosion and lessened wetland development. Roads have helped to disperse invasive species such as Siberian Elm and altered water flow within the drainage resulting in reduced riparian species diversity, headcuts, embedded stream reaches, decreased meander lengths, altered stream channels, and increased stream width. The proposed installation of structures, such as one rock dams, will help to address these concerns.

Also, increased mountain biking and equestrian use on existing and non-system trails has contributed to soil erosion and sedimentation and there is a need to relocate some existing trails and obliterate non-system trails. These unregulated and unauthorized impacts have also contributed to infestation of invasive plants.

Proposed Vegetation Treatments

Product/ Non- Product Removal Area	Treatment Type	Cutting Methods How will excess trees be cut or otherwise handled?	Tree Removal Will cut trees be removed from the areas?	Slash Treatment What happens to tree tops and other material that remains on the site after cutting?
Product Removal Area	1 – Satisfactory soils on less than 40% slope: within 0.25 mile along national forest system (NFS) roads, NFS trails, or unauthorized roads. Approx acres 2,450.	Mechanical mastication Chainsaws – contract or Forest Service Mechanized feller	None where mastication occurs Commercial fuelwood, service contracts and/or timber sale contracts. Where good access exists, material removed under permits for personal use firewood	Masticated material would be spread on site to a depth of 0"-4", other cut material lopped and scattered to a depth of 18" max. Hand piles may be created where needed and piles will not exceed 10'x10' Broadcast burning and/or pile burning when management prescription conditions are met.
Product Removal Area	2 - Impaired soils on less than 40% slope and satisfactory soils with severe erosion hazard rating: within 0.25 mile along NFS roads, NFS trails, or unauthorized roads. Approx. acres 2,200	Mechanical mastication	None where mastication occurs	Masticated material would be spread on site to a depth of 0"-4", other cut material lopped and scattered to a depth of 18" max. Hand piles may be created where needed and piles will not exceed 10'x10' Broadcast burning and/or pile burning when management prescription conditions are met.
		Chainsaws – contract or Forest Service Mechanized feller	Commercial fuelwood, service contracts and/or timber sale contracts.	
Non-Product Removal Area	3 –Areas with 30%+ slope and unsatisfactory soils: within 0.25 mile along NFS roads, NFS trails, or unauthorized roads. Approx. acres 2,460.	None- these areas would be prescribe burned only	None	None
Non-Product Removal Area	4 – All areas with greater than 30% slope. Approx. acres 1,600.	Chainsaws – contract or Forest Service and/or Prescribe burned only	None	Cut material will be lopped and scattered to a depth of 18" max. Hand piles may be created where needed and piles will not exceed 10'x10' Broadcast burning and/or pile burning when management prescription conditions are met.
Non-Product Removal Area	5 – All forest vegetation types that are inaccessible for wood product removal. Approx. acres 4,350.	Mechanical mastication Chainsaws – contract or Forest Service Mechanized feller and/or prescribe burned only	None	Masticated material would be spread on site to a depth of 0"-4", other cut material will be lopped and scattered to a depth of 18" max. Hand piles may be created where needed and piles will not exceed 10'x10'. Broadcast burning and/or pile burning when management prescription conditions are met.

Cedro Project Area 2016



Cedro Project Area 2023 – Treated Approximaetly 10,000 acres to date

