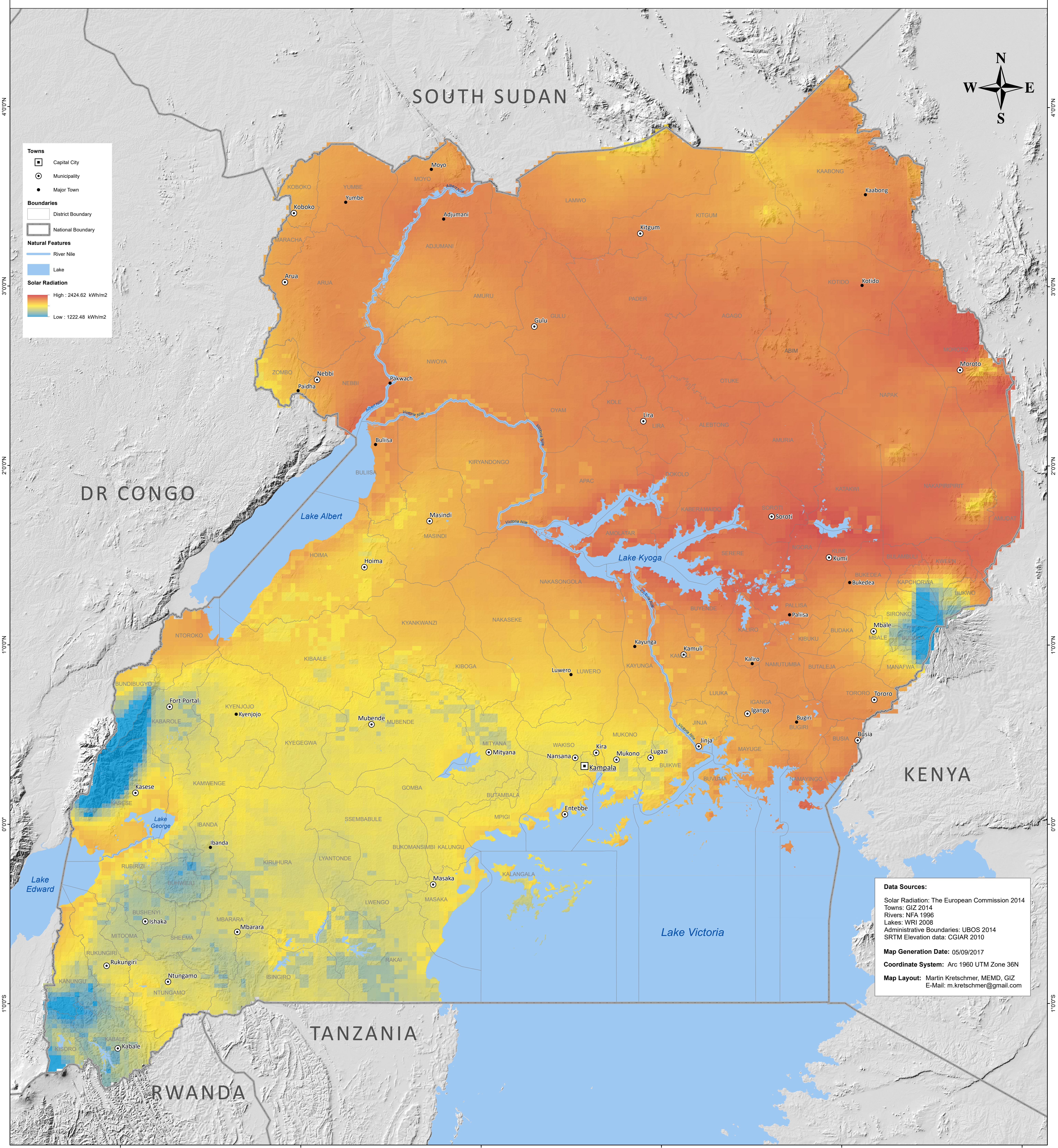
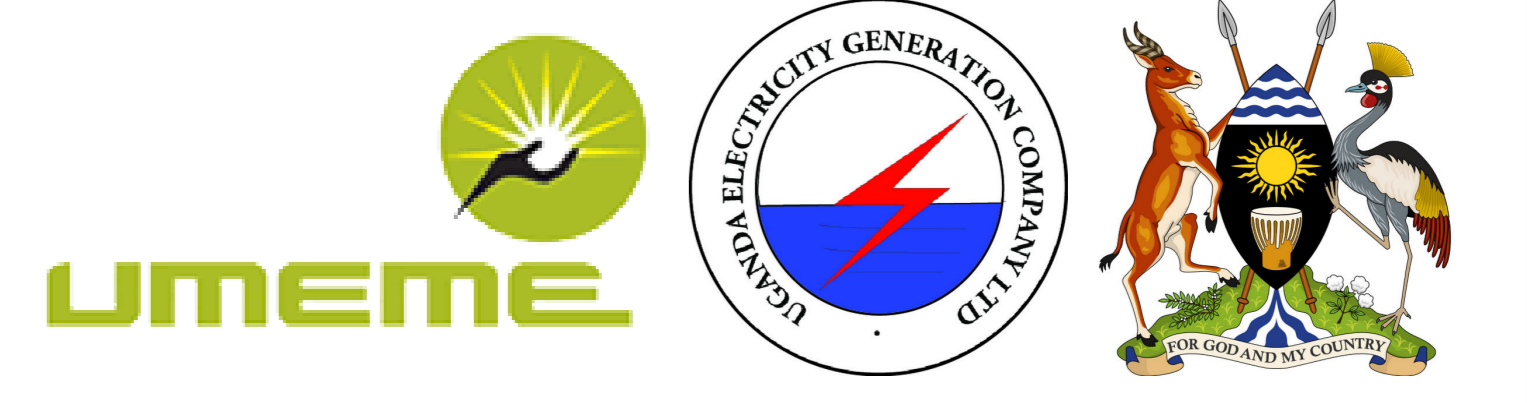


30°00'E 31°00'E 32°00'E 33°00'E 34°00'E 35°00'E



Solar Radiation in Uganda

0 50 100 200 Kilometers



Towns

- Capital City
- Municipality
- Major Town

Boundaries

- District Boundary
- National Boundary

Natural Features

- River Nile
- Lake

Solar Radiation

High : 2424.62 kWh/m2
Low : 1222.48 kWh/m2



Data Sources:

- Solar Radiation: The European Commission 2014
- Towns: GIZ 2014
- Rivers: NFA 1996
- Lakes: WRI 2008
- Administrative Boundaries: UBOS 2014
- SRTM Elevation data: CGIAR 2010

Map Generation Date: 05/09/2017

Coordinate System: Arc 1960 UTM Zone 36N

Map Layout: Martin Kretschmer, MEMD, GIZ
E-Mail: m.kretschmer@gmail.com

30°00'E 31°00'E 32°00'E 33°00'E 34°00'E 35°00'E