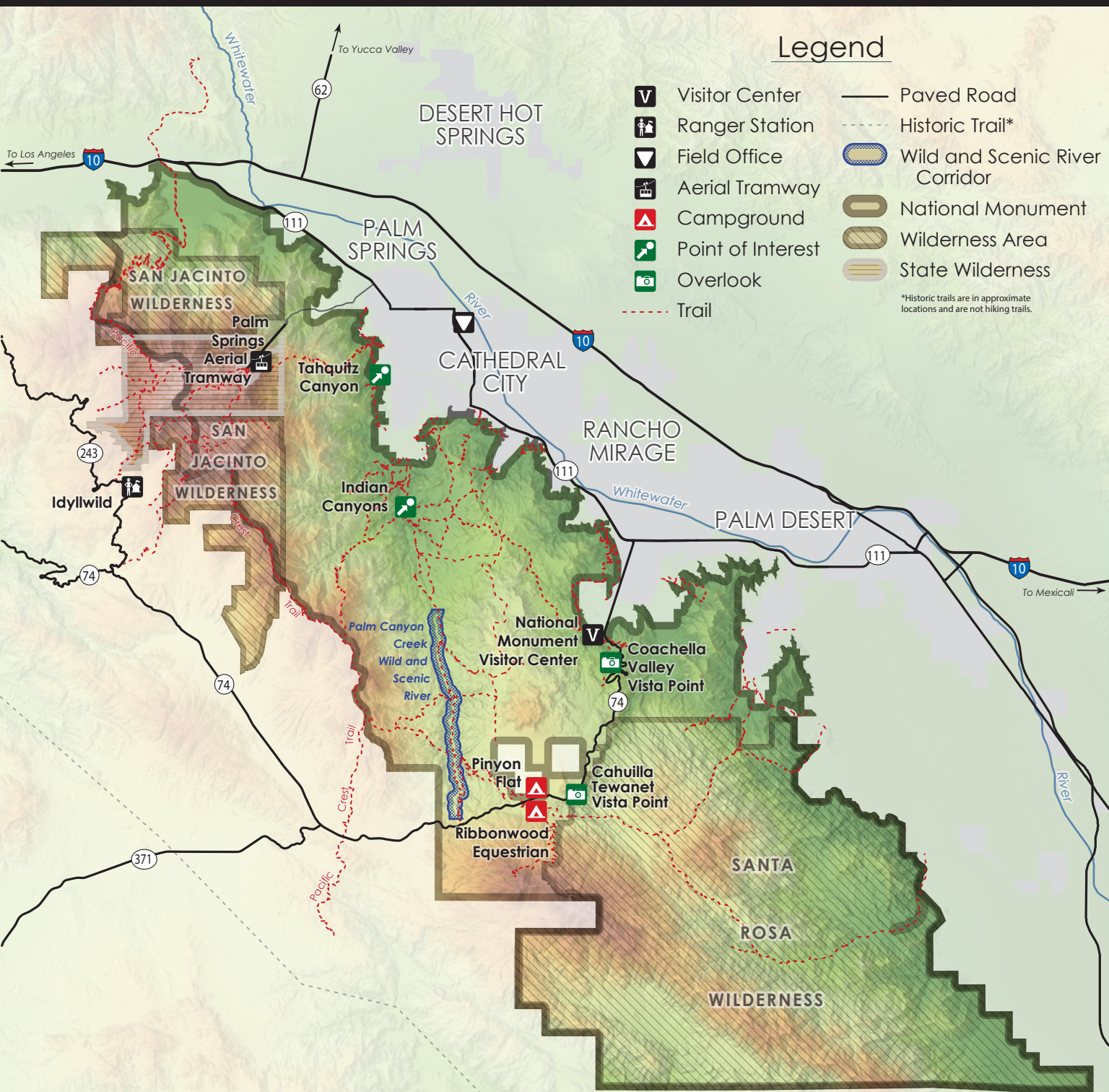
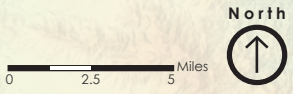


# Santa Rosa and San Jacinto Mountains National Monument



## Legend

- |  |                   |  |                                |
|--|-------------------|--|--------------------------------|
|  | Visitor Center    |  | Paved Road                     |
|  | Ranger Station    |  | Historic Trail*                |
|  | Field Office      |  | Wild and Scenic River Corridor |
|  | Aerial Tramway    |  | National Monument              |
|  | Campground        |  | Wilderness Area                |
|  | Point of Interest |  | State Wilderness               |
|  | Overlook          |  |                                |
|  | Trail             |  |                                |
- \*Historic trails are in approximate locations and are not hiking trails.



No warranty is made by the BLM as to the accuracy, reliability, or completeness of these data for use or for purposes not intended by BLM.