

# Level 3b- Novice

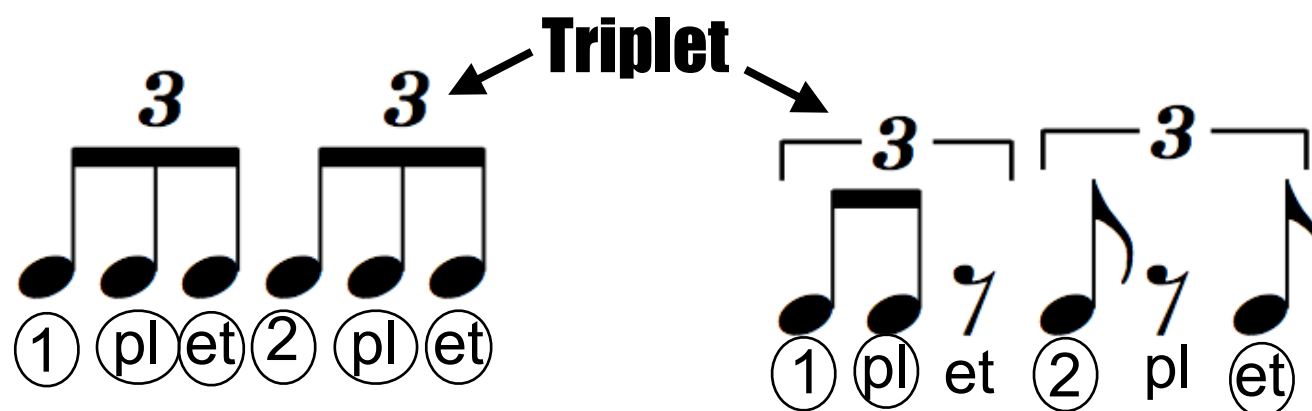
Triplet subdivision, eighth note triplets, and quarter note triplets

## Triplet subdivision

A triplet subdivision is a beat divided into three equal parts. There aren't any subdivisions in triplet that align with eighth or sixteenth notes. The subdivision syllables for triplet subdivision are the number, pl, and let.



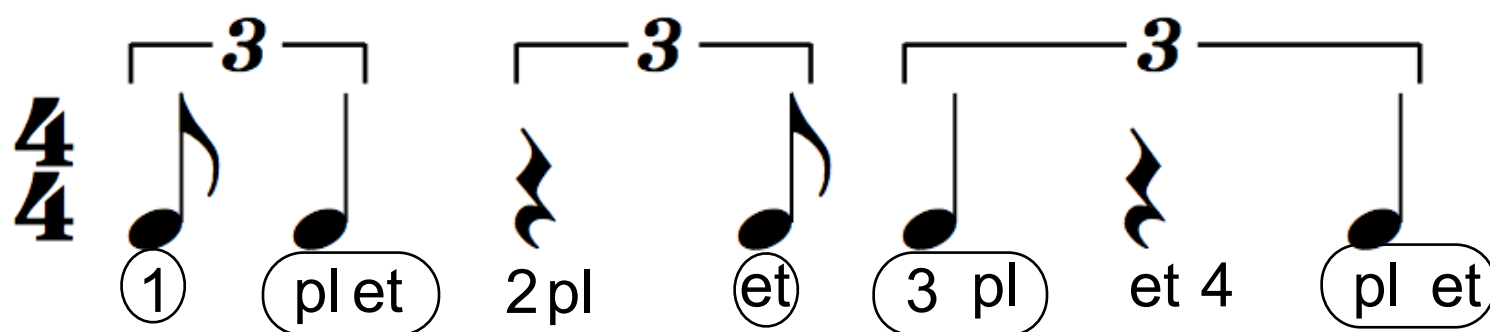
## Eighth note triplets and rests



An eighth note triplet gets 1/3 of a count. Eighth note triplets look like eighth notes, but they are beamed in groups of three and have a small three above them. When rests are in a triplet rhythm, brackets are added to clarify what is included in the triplet rhythm.

## Quarter note triplets and rests

A quarter value is equal to two eighth values. When writing in counts for a quarter note/ rest triplet, use two triplet subdivisions. Three quarter note triplets equal two beats of music.



*A quarter note triplet is equal to two eighth note triplets*

Another way to notate a quarter note triplet is with a ratio. There are three notes evenly distributed over two beats in a quarter note triplet creating a **polyrhythm** (two or more rhythmic feels occurring at the same time). The ratio of 3:2 shows this relationship. Ratios will be used later to show other polyrhythmic identities.

