



GreenWeld Presentation

100% Recycled Armored Flashing System



Presentation Objectives

1. Understand GreenWeld's Features/Benefits
2. What are the Benefits to the Contractor?
Why Should They Buy?
3. What is Coming for Marketing/Training?



Understanding GreenWeld's Features/Benefits



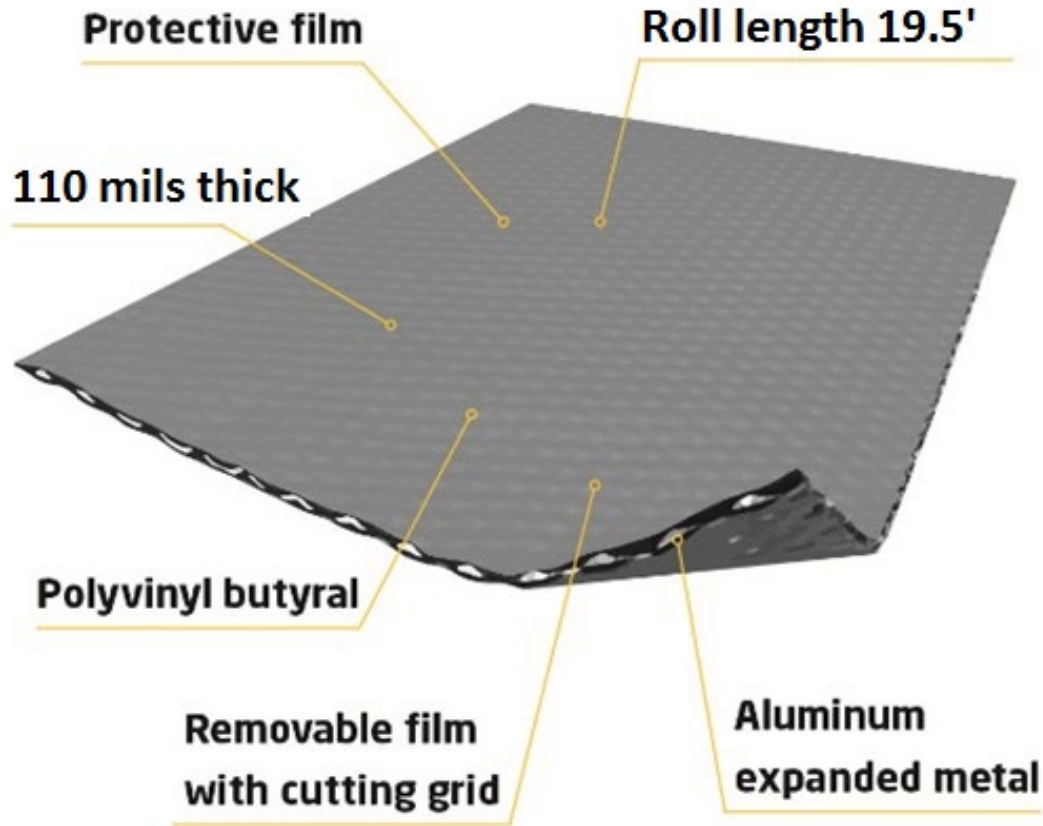
The GreenWeld Concept

- GreenWeld is a multi-purpose membrane, made out of waste
- From a linear to a circular economy
 - *R-PVB (Recycled Polyvinyl Butyral)*
 - PVB Recycling from windshields and laminated building glass
 - Unique Properties
 - 1 Billion Kg per Year Available





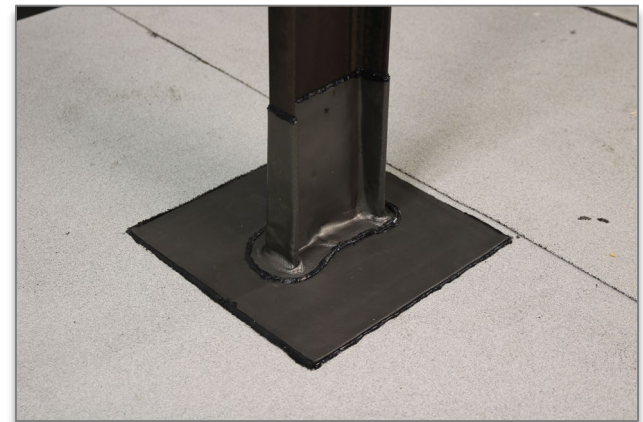
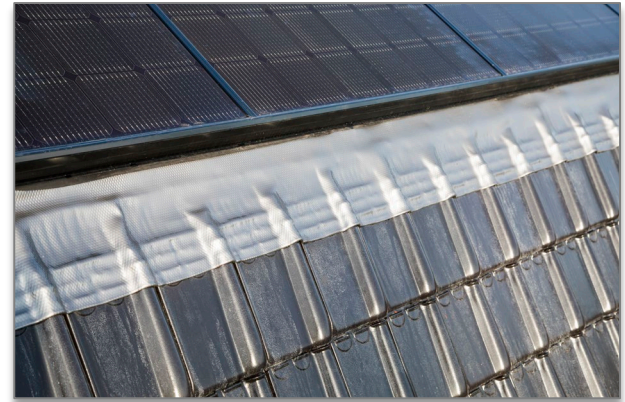
GreenWeld Composition





What Does GreenWeld Do?

- Residential & Commercial Applications
- Replaces Lead Flashings
 - GreenWeld is 75% of the Weight of Lead
 - Environmentally/Installer Safe
 - Quicker Install/Less Cost
- Replaces Liquid Flashing
 - 20 Year Warranty (GreenWeld) versus 10 Year Warranty (Liquid Flashing)
 - Highly UV Resistant
 - Can be Coated with Approved Urethane
 - Quicker Install/Less Cost
- Replaces Single-Ply/Coating Flashings
 - Interior Gutter Liner
 - Difficult Flashings
 - Longer Lasting





Applications

- Vent-to-Roof Pipes
- Angle Iron
- Drain Flashing
- Lining Deteriorated Interior Gutters
- Valleys/Ridges
- Higher Temperature Flashing
- Step Flashing
- Chimney Flashing
- Sil Flashing
- Through-Wall Flashing
- Roof-to-Wall Flashing





Features & Benefits Versus Lead

- **GreenWeld**
 - 100% Recycled Membrane
 - Heat-weldable Seams
 - High UV Resistance
 - 20 Year Warranty
 - Not Eaten by Animals
 - 3 Roll Sizes and Custom Pre-Manufactured Options
 - Light Weight
- **Lead**
 - Considered Hazardous
 - Outlawed in Several States
 - Welding/Soldering Required
 - No Warranty
 - Eaten by Animals
 - Heavy Weight
 - Sheets Only
 - Tears Easily

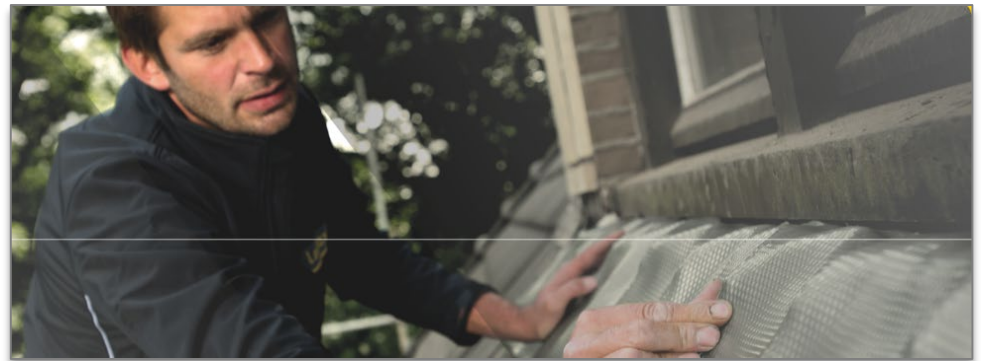


Understanding the Benefits to the Contractor



Features & Benefits for a Contractor

- Quick Install = Labor Savings
- 100% Recycled Membrane
- Easy to Install
- Can be Pre-Manufactured
- Heat-welded Seams
- High UV Resistance
- 20 Year Warranty
- Less Call Backs
- Safer for Installer and the Environment





GreenWeld vs. Lead Pipe Install

- **GreenWeld Roll**
 - Cut and Weld Boot (30 Mins)
 - Apply Sealant (3 Mins)
 - Install Boot (3 Mins)
 - Seal Boot (3 Mins)
- **Total Time: 39 Mins**
- **Total Cost: \$125.00/Ea.**
- **Lead Sheet Install**
 - Cut and Weld Lead (60 Mins)
 - Apply Target Flashing (10 Mins)
 - Install Boot (5 Mins)
 - Install Base/Cap Flashing (15 Mins)
- **Total Time: 90 Mins**
- **Total Cost: \$150.00/Ea.**



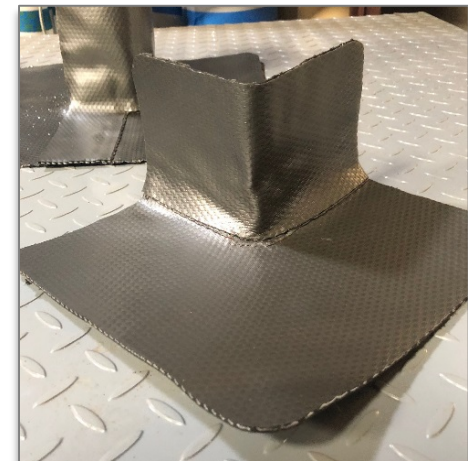
GreenWeld vs. Lead Pipe Install

- **GreenWeld Pre-Mfg.**
 - Prep Roof (3 Mins)
 - Apply Sealant (3 Mins)
 - Install Boot (3 Mins)
 - Seal Boot (3 Mins)
- **Total Time: 12 Mins**
- **Total Cost: \$125.00/Ea.**
- **Lead Sheet Install**
 - Cut and Weld Lead (60 Mins)
 - Apply Target Flashing (10 Mins)
 - Install Boot (5 Mins)
 - Install Base/Cap Flashing (15 Mins)
- **Total Time: 90 Mins**
- **Total Cost: \$150.00/Ea.**



Rolls or Pre-Manufactured

Some forms
are available in
pre-manufactured
shapes.





Superior Features of GreenWeld



GreenWeld is a recycled product: made from waste and fully recyclable end of lifetime.



GreenWeld is Non-toxic and does not contain any heavy metals. The expected lifetime is over 30 years.

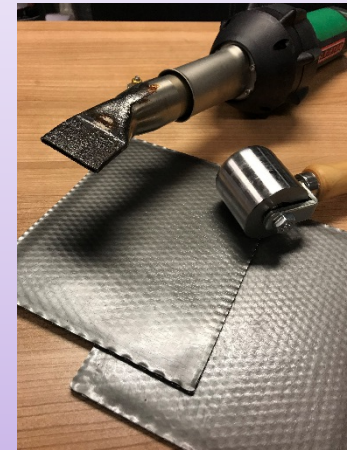


75% lighter than Code 4 lead.



Longer roll lengths (19.5') - GreenWeld doesn't expand or shrink with temperature differences. No expansion joints, thus saving materials and labor.

**Waterproof overlap
with heat gun**





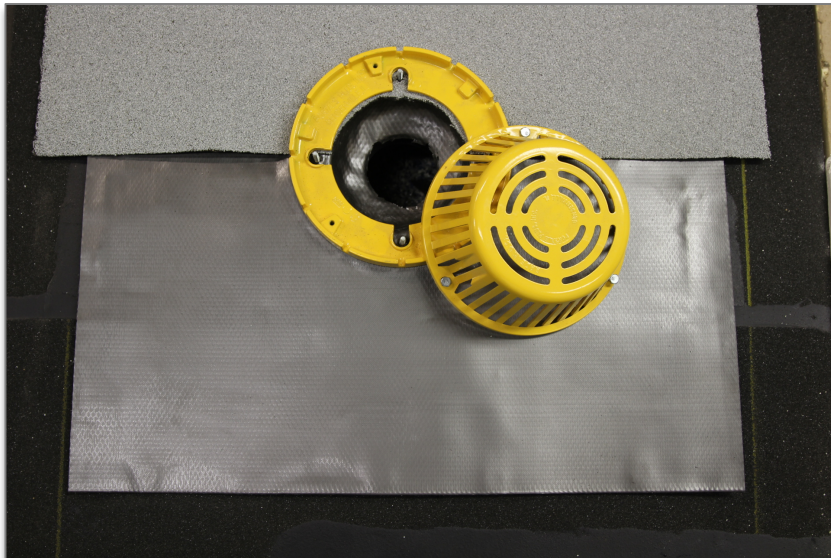
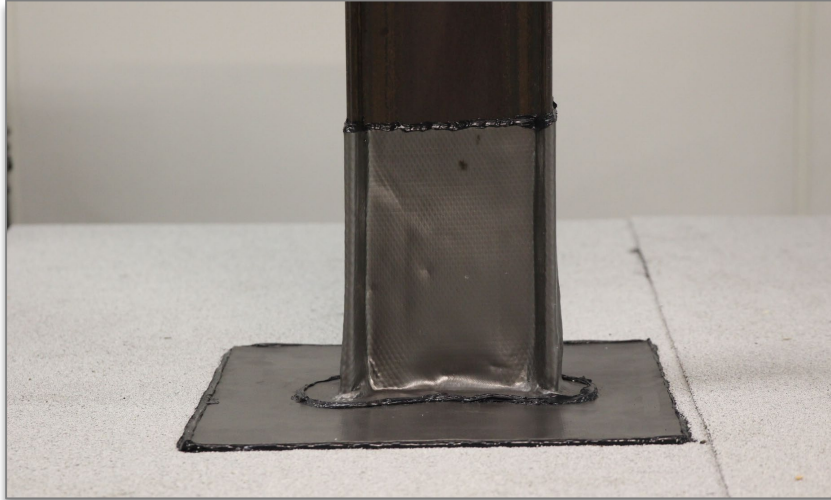
GreenWeld can Replace Many Old Technologies = Labor Saving





GreenWeld Application Photos







Marketing/Training






Technical Literature

GREENWELD: ARMORED FLASHING SYSTEM

STRENGTH MEETS VERSATILITY

Versatile Solution... Lead Free!
With aluminum reinforcement for superior strength and modified polyvinyl coating for exceptional flexibility, GreenWeld delivers dependable waterproofing protection in one monolithic sheet. Ideal for a variety of flashing applications, this system can even replace lead or zinc products used to flash and seal rooftop drains and pipes - lead free! This is the first material in the world to offer the benefits of lead without the harmful effects of actual lead. As an alternative to lead flashing products, GreenWeld is even easier, faster, and less expensive to install.



FEATURES

GREENWELD: ARMORED FLASHING SYSTEM

GREENWELD APPLICATIONS

- Flashing material for pipe penetrations & support beams
- Water barrier for cavity walls and beneath casings
- Connection between outside walls and extensions
- Liner for gutters
- Protection for ridges on sloped roofs
- Liner for valleys of shingle, tile and aluminum metal roofs
- Joint between dormers and skylights to side walls and tiled roofs
- Through wall flashing conditions

Performance & Installation Benefits
Independent tests show that GreenWeld has the same water properties of traditional lead used to seal roof penetrations in hostile environments. GreenWeld can be used in extreme conditions without trouble - down to -4F (-20C) material is also very easy to heat-weld which means attractive weight savings.

Material
GreenWeld is made up of expanded aluminum mesh reinforced with a monolithic layer of modified polyvinyl butyl release liner of each side of the material roll makes unroll simple and includes a printed grid for simple, accurate installation.
Available in:
• Extra-long lengths
• Multiple widths
• Various colors

SYSTEM INCLUDES

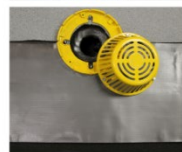
- GreenWeld PVB membrane with release liner
- Flashing clips for masonry applications
- Compatible high-performance sealant
- Compatible high-performance adhesive

APPLICATION TIPS

- Required tools may include a sharp knife or scissors for cutting material as well as a heat gun and aluminum hand roller for heat-welded applications
- Use the 2"x2" grid printed on the release liner to make cutting material efficient
- After application, remove the top protective liner (it can be beneficial to leave the liner in place until the pointing is complete to keep the flashing clean)
- Use the aluminum hand roller to easily wrap the material around details and penetrations
- Remember to use approved sealant at heat welded seams and under the material (especially anywhere strong winds are expected)
- Use approved adhesive for target patches and to adhere to substrate

Distributed by:
Viking Products Group, Inc.
3812 East 91st Street, Cleveland OH 44105
1-800-350-0142
www.vikingpgp.com

Viking Products Group owns sole commercial distribution rights in U.S.A. GreenWeld is a trademark of Viking Products Group. This product is a lead-free product.



GREENWELD® PVB

Commercial (Flat) Roofing Installation Guide

The GreenWeld PVB armored flashing system is a high-performance PVB (Polyvinyl Butyral) membrane enhanced with an aluminum mesh superior weathering.

Independent tests show that GreenWeld has the same waterproofing properties of traditional lead and liquid

GREENWELD® PVB

Commercial (Flat) Roofing Installation Guide Cont.

Roofs and containers that are waterproofed for prolonged periods.

IMPORTANT APPLIC CONSIDERATIONS

- Do not install in ice/snow in the forecast of are lower than 50°F (10°C) guidelines applied by the
- Store all roofing material application
- Do not apply roofing material stored or exposed to moisture
- Refer to the roof system requirements
- Substrates must be free of moisture
- Primer, if used with hot asphalt cannot be applied in particular job. Where applicable apply roll lengths and allow to dry

FLASHING APPLICA

These application recommend a reference. Applicator need contained in the approved guide

For pipe penetrations and approved sheets mentioned by the GreenWeld PVB Flashing

A. Pipe/Angle from Cold Installation

- Properly install the membrane patch beneath the GreenWeld Structural Adhesive/sealant in base penetration, or Gardlex® to the substrate and a rate of 2-3 gallons per
- Pre-Manufactured Closed over the penetration and Pre-Manufactured Split-E manufactured boot and

GREENWELD® PVB

Commercial (Flat) Roofing Installation Guide Cont.

C. Drain Flashing for Cold/Hot Installation (Lead Alternative)

- Plug drain to prevent debris from entering plumbing.
- Install insulation and membrane system per manufacturer's recommendations.
- If using a hot asphalt system, install hot asphalt for piles up to GreenWeld PVB membrane. Then, use approved cold adhesive for membrane over the GreenWeld PVB membrane as drain flashing.
- Set GreenWeld PVB as drain flashing (30" square minimum) in 1/4" bed of approved cold adhesive or mastic. Run GreenWeld PVB into drain a minimum of 2" (50 mm).
- Install base flashing ply per manufacturer's recommendation (40" square minimum) in approved cold adhesive over GreenWeld PVB.
- Install cap membrane (48" square minimum) in hot asphalt or approved cold adhesive per manufacturer's recommendations.
- Remove drain plug and install strainer.

APPLICATION ILLUSTRATIONS & IMAGES

D. Internal Gutter Liner/Flashing Installation

- Remove all loose debris, coating and membrane.
- Pressure clean the existing gutter and remove debris to workable surface.
- Install GreenWeld PVB Membrane set in approved adhesive/sealant at 6" o.c. in the field and up the penetration, or Gardlex Green-Lock Flashing Adhesive to the substrate and a min. 6" (150-4mm) onto the field at a rate of 2-3 gallons per 100 sq. ft. (0.52-1.2 m²).
- Work to slope the GreenWeld from high side to low side of the gutter.
- Heat-welded seams of membrane keeping high edge of top to high side of gutter, seal with approved adhesive/sealant.
- Tie in GreenWeld PVB Membrane on each side of gutter at top side using sealant and barrier if needed and seal with approved sealant/adhesive.
- Seal all penetrations with proper flashing detail and approved sealant/adhesive.

Through-Wall Flashing

- All masonry surfaces receiving through-wall flashings shall be free from loose materials, and reasonably smooth. There shall be no slopes that will form pockets or prevent free drainage of water to the exterior surfaces of the wall. All work shall be executed in conformance with accepted trade practice.
- Install GreenWeld PVB Membrane in dimensions out to fit as follows.
- Extend flashing 6" (152-4mm) minimum beyond opening. Fold flashing ends at end of openings or

GREENWELD® PVB

Commercial (Flat) Roofing Installation Guide Cont.


horizontal flashing terminations to form end dam or use premanufactured units made of 26 gauge stainless steel

- Flashing width, required to start flush with outside face of exterior wythe, extending through cavity rising height required to extend 6" (152.4mm) above weep level or 2" (50.8mm) minimum above lintel stool, whichever is higher.
- Seam end joints by overlapping them a minimum of 4" (101.6mm). Heat-welded seams of membrane and seal with approved adhesive/sealant
- Back up wall attachment. Surface apply after air/water barrier installation is completed in accordance with manufacturer's requirements. Fasten to back up wall at top of flashing using aluminum termination bar. Fasteners shall be appropriate for back up wall type and spaced minimum every 3' (76.2mm) o.c. Seal the top edge to back up wall with compatible sealant.
- Install weep and monitor blocking netting according to project specifications.


GREENWELD® PVB

Commercial (Flat) Roofing Installation Guide Cont.

APPLICATION ILLUSTRATIONS & IMAGES



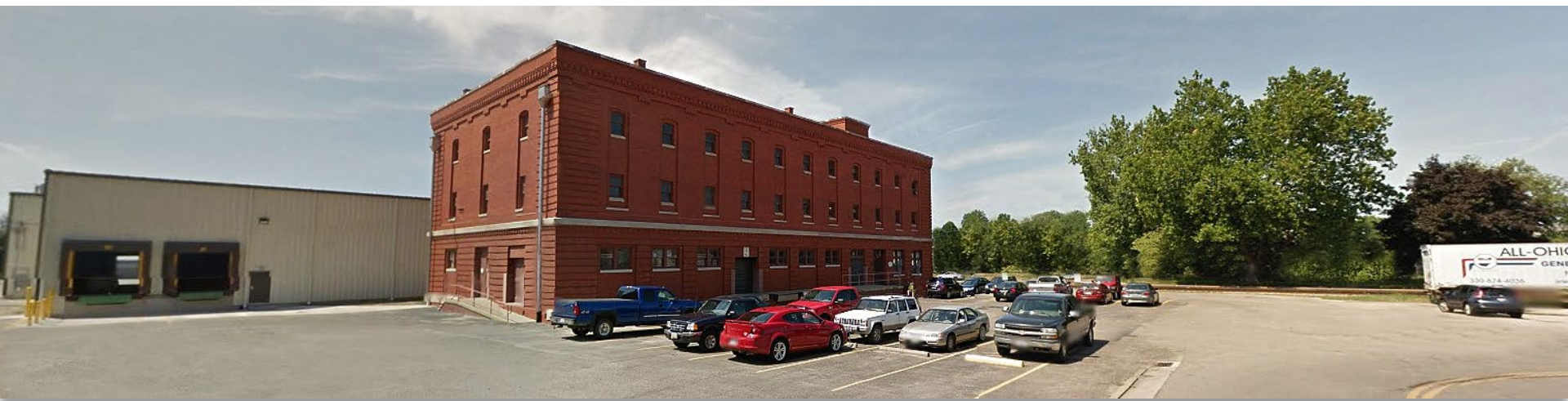
Overlap area/ Heat welded





Available Marketing

- **Videos**
- **Animations**
- **Contractor/Supply House Lunch & Trainings**
- **End Cap Displays & Consignment**
 - **Small End Cap Displays with Samples**
 - **Small Selection of Rolls**
 - **Video Monitor on Loop**
- **Options on These Programs Coming Soon!**



mfm BUILDING PRODUCTS CORP.



525 Orange Street ▪ PO Box 340
Coshocton, Ohio 43812



800-882-7663
www.mfmbp.com ▪ info@mfmbp.com