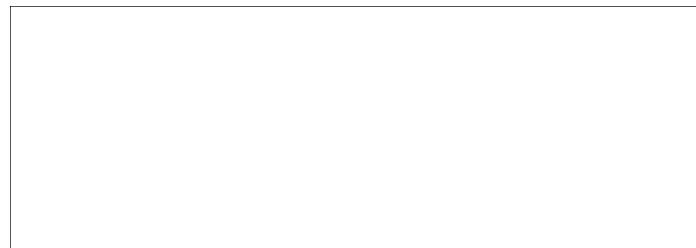
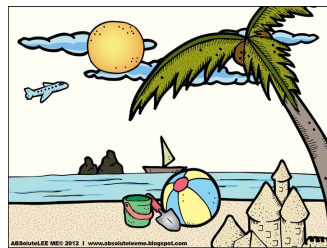


Bethesda United Methodist Church
406 N. Division Street
Salisbury, MD 21801
Bethesda-umc@outlook.com

Return Service Requested

NON PROFIT ORG.
U. S. POSTAGE PAID
SALISBURY, MD 21801
PERMIT NUMBER 77



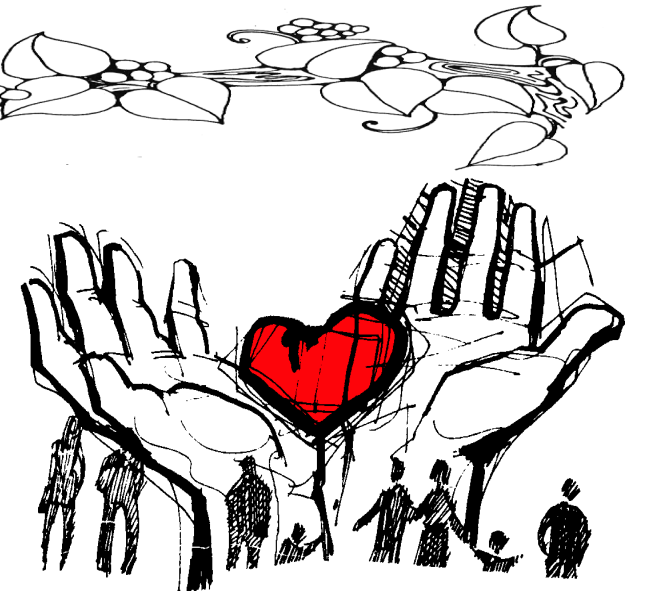
Bethesda United
Methodist Church

AGAPE GRAPEVINE

A Calling to Serve God

By Cres Long

August 2017



A few years ago, as Bethesda was going through a transition, several other members and I experienced a profound calling to serve God. The calling had come to us in different ways, but each of us sensed the need to pursue a deeper relationship with God and to discern how He was calling us to serve.

In the Spring of 2015, four of us, Betty and Courtland Cropper, Pam Ward and I enrolled in the Salisbury District's Lay Servant Academy's Basic course. I am sure that over the years many other members of Bethesda have also participated in this program. The course met once week in the evening for about eight weeks. It gave each of us a quick introduction to Methodist governance and doctrine, and it devoted considerable time to preparing us for preaching a sermon. Many of us admitted to some apprehensions, but in the end, one of the fundamental parts of our faith is sharing it with others.

The course is designed to increase confidence and help participants think through the actual process of "building" a sermon. The course culminated with an evening of presenting our sermons in front of our peers. While I don't speak for everyone, I think it is safe to say that we all got a lot out of the course, and we came away with a sense that we had taken step one in the long journey of discernment.

Lay Servants cooperate with the pastors of the church and also initiate ministries

of their own. A couple of ways that several of us are enhancing the ministry of Bethesda is by contributing to the Agape and by helping fulfill our commitment to bring the Word to Pine Bluff. By taking on these responsibilities we have the opportunity to serve God and serve Bethesda and to share dimensions of our faith. We are all called, and for now, these activities make up an important part of our answer to the call.

I am certain there are others in our congregation who have felt called in one way or another. A Lay Servant can pursue virtually any ministry. The following is language from the conference website's section on Lay Servant Ministries: "A Lay Servant is an active, supportive member of a United Methodist congregation who is eager to be in ministry through the church. He/she is well-informed on scripture, doctrine, heritage, organization and life of the United Methodist Church and is committed to witnessing through church and community leadership, care giving ministries and spoken communication. A Lay Servant is willing to initiate ministry in partnership with clergy and other Lay Servants and willing to improve his/her skills for service."

If you think God is calling you in this direction, please talk to Pastor Bob, Pam Ward, or me....

Creston Long,
Chair S/PPRC
Deacon, Bethesda United Methodist Church

Midsummer's Eve



Where are you going, summer breeze?
Off beyond the fields and trees.

What do you see when you blow that way?
Children jumping from bales of hay.

What do you hear as you travel the land?
People dancing to an outdoor band.

What do you smell as you rush about?
The perfume of blossoms bursting out.

What do you taste as you soar up high?
Fresh corn on the cob and apple pie.

What do you feel as you climb to great heights?
The heat of the day and the warmth of the nights.

What do you wish for as you leave?
Let all folks enjoy this midsummer's eve

Agape Grapevine
is published monthly by



Bethesda United Methodist Church

406 N. Division Street
Salisbury, MD 21801
Phone: 410-742-8855

E-mail: bethesda-umc@outlook.com
Web Address: www.umcbethesda.org
Editor: Sandra S. Mills

Sunday Schedule

9:00 AM—Contemporary Worship—Memorial Room
The Garden Sunday school
9:00 AM—Adult Sunday school—Fireside Room
Nursery
10:30 AM—Traditional Worship—Sanctuary
One Room Sunday school
Nursery

Alzheimer's Update Swimming Against the Tide

Recently the local Alzheimer's Assn. kicked off the forthcoming "Walk for a Cure" with the first annual "Great Rubber Duckie Race" at Riverwalk Park in Salisbury. Several hundred bathtub-sized rubber ducks set forth floating eastward on the incoming tide making painfully slow-but-steady progress. Just as the first four duckies stepped across the finish line the wind suddenly whipped up the water and the remaining ducks stalled or began

swimming in the wrong direction. Suddenly the sky opened; rain pelted duckies and spectators alike. Most spectators rushed to rescue their "wares" and missed the end of the race.

The confusion the storm caused among the rubber toys made me think how caring for someone with dementia can be like swimming against the tide — no matter how hard, or how long, you swim toward the beach, you feel yourself drifting farther out to sea!

After I spoke to the congregation in 2016 about
(continued on Page 5)

Bulletin Board for Seniors

By Ann Suthowski

Last Spring while attending an event at Christ UMC, I saw a bulletin board especially for seniors. It was made of slats and had bins attached to it that contained information for seniors. This is different from a one-dimensional board as that now you can take information with you.

Shortly after, a member of Bethesda asked me about organizations in the community for seniors. He was amazed at the number of opportunities.

I attended a Bethesda Council Meeting, explained my idea for the bulletin board, they approved my plan and allotted me the amount of money needed. The slat board is now in the hall of the church by the elevator.

In the bins, Bethesda seniors can find information on:

1. Activities at the MAC Center (Maintaining Active Citizens)
2. AARP—local chapter
3. Institute for Retired Persons at Salisbury University (IRP)

4. Association for Lifelong Learning (ALL)
5. Programs at Salisbury University—most of them are free.
6. Happy Timers

If you know of any other information that you would like to have included please let me know.

The **MAC Center** offers exercise facilities, computers, meals, and activities for seniors.

IRP meets every Tuesday that the University is in session at the MAC Center. The programs consist of speakers on a large variety of topics. There are sponsored clubs which include book club, bridge, tour club, and walking and bicycle clubs.

AARP meets the first Thursday of each month at the MAC Center.



ALL is an organization for seniors who are interested in continuing to learn and explore ideas through members led courses—once a week—1 1/2 hours. Courses are from 4-8 weeks. Seventeen courses are offered this semester. Meet at MAC Center and Bethany Lutheran Church.

Wor-Wic College Continuing Education Dept. offers free courses for seniors. You need only pay a small fee. Catalogue is sent in mail to all Wicomico County residents.

Happy Timers in an organization sponsored by the Wicomico County Recreation and Parks Dept. They meet on Monday and Wednesday at the Civic Center. Activities include games, trips meals and crafts.



Time to Think About Our Fall Bazaar!



FALL BAZAAR
October 7th, 2017
9 AM—2 PM
Bring your Friends and Family!

Have you ever heard the phrase "One man's trash is another's treasure"? Well, we really don't want your trash BUT what could you do with those things around your home that you just don't need or want anymore? What about that gift that is still in the package but you know that you will never use it. We can help!

As we begin our plans for the silent auction and yard sale for Bethesda's Fall Bazaar, we are encouraging you to look around your home. If you have nice things that you have never used or things that have been lightly used but are in mint condition, please consider contacting us so that we can use them in the **Silent Auction**. Please call **Nancy Rowe (443 880 6867)** if you have items to donate or questions.

Likewise, please set aside things that would be appropriate for our yard sale. The **Yard Sale** will include small pieces of furniture, children's games, toys, baby equipment, kitchen equipment, home decorations, glassware, dishes, books, sports equipment, jewelry, etc. and this year we are accepting clothing.

Watch the bulletin for drop off times. Please contact **Melanie Donophan (443 880 1743)** with questions @ the yard sale.

NOTE: Please **do NOT bring old tv sets** or anything others may deem as "trash". We simply cannot put these items out for sale. Thank You!

From the Music Department

By Dr. Jeffrey Baer, Director of Traditional Music

Last month I outlined the photo challenge I gave to the choir members for their summer vacations. At this point of the summer I would like to show you some of the exemplars for this competition. Jana submitted several pictures from her Norse cruise. Another member countered with an entry for the category of "Church Named Bethesda."

Please know that these competitors will be back together starting on **September 6th and 7th** to begin the new worship schedule. They may compete for the picture prize, but they will cooperate to provide inspirational worship music for our traditional services.

Thank you so much to all of those who provided Special Music for our worship services during the summer.

Enjoy the pictures and see you in church.

Jeff



Pockets Club Jokes (from POKETS for kids who love GOD)

1. What do you call it when a t-rex makes a goal in soccer? A dino-score!
2. Why did the soccer player bring string to the game? She wanted to tie the score!
3. Why is a basketball court always wet? Because the players dribble all over it!

Hero Central...
V B S Success!
By Kyle Beebe

Thank you to all at Bethesda for meeting the VBS challenge and helping make our week in June a great success. For the 5th year running, **Bethesda** joined forces with **Trinity United Methodist** and **Wicomico Presbyterian** to host our community VBS. I can not thank all our Bethesda volunteers enough for their energy and presence at Hero Central. Here are some statistics from the week:

- 48 families represented
- 23 preschoolers 50 children ages K through grade 4
- 20 middle school and high school volunteers
- 40 adult volunteers
- 7 adults who participated at least one evening in adult VBS
- 170 fed at our last night together in our Memorial Room.
- \$179 raised to be sent to the Congo... That is 359 kids being fed a meal! Amen... Amen!
- 30 collected meals in a bag for Salisbury Urban Ministries
- Persons being blessed by it all..... too many to mention!

Many, Many Thanks!

Thank you to Pastor Bob and Dr. Dan for their comforting visits while I was on the hospital.

Thank you to everyone for their lovely get well cards and kind thoughts.

To those who brought us food, thank you for thinking of us in such a special way. Your thoughtfulness was truly appreciated after my recent surgery and illness.

God’s Blessings to all,
Lora Adkins



Youth News
Pam Ward, Director

It is with great joy and excitement to have this opportunity to work with Bethesda’s youth and young adults. They truly are the future of Bethesda!

A short bio of who is Pam Ward... I am a mother of two teenage young men, wife of a super supportive husband, daughter, friend and child of God. I have had the opportunity to travel on work camp mission trips, youth rally in OC, weekly gatherings and other youth outings. It has been my privilege to be a member of Bethesda for over 20 years. My goal is to walk alongside the youth as they grow in their relationship with Jesus.

Tauren Wells sings a Contemporary song called “Hills and Valleys.” Adults and youth alike go through hills and valleys of life. I want to be like Jesus and be with the youth through their journeys of ups and downs, celebrating and living! Please encourage your son or daughter to be a part of this adventure.

Details are being ironed out for the upcoming fall events:

Mark your calendars for **Sunday August 20th for - annual Pool Party!**

- Look for information about....
- =Car Wash /Hamburger, Hot Dog Event
 - =REACH Interest Meeting for Travels in summer of 2018
 - =Survey for Youth and Parent Input
 - =Weekly Gatherings will begin in September
 - =Sunday Morning Fellowship will begin in September
 - =Young Adult/College Student Get-together

PLEASE SHARE YOUR EMAIL ADDRESS WITH ME OR TEXT ME!
pamward5863@gmail.com or 410-726-5863



Thanks, Many Thanks

Dear Bethesda family:
Thank you for gifting me with a scholarship. Your generosity means so much to me. Bethesda has been my church since birth and has played a vital role in my spiritual growth and now helped shape me into the person I am today. Thank You so much for believing in me and for helping me continue my education.

Sincerely, Makenzie Shreeves

From the Editor: Makenzie will attend SU in the fall and plans to major in Nursing.

“Not God”

A play written by an oncologist, (Mark J. Straus) being produced as a fundraiser for **The Relay for Life** and being directed by Ann Northam. Fri. & Sat., August 25th and 26th At 7:00 PM @ Wor-Wic Community College. For more information: Call Ann Northam 443 235 9184

“Not God” is being presented with permission by Northwestern University. This production is a collaborative partnership between Wor-Wic Community College, the Lower Shore Performing Arts Company, the Community Players, Avery Hall Insurance, and the Salisbury chapter of the American Cancer Society.

Thank You

A huge thank you for all who supported the Youth on their REACH Mission Trip. The encouragement, prayers, and financial support is so appreciated.

Proverbs 22:6 “*Start children off on the way they should go, and even when they are old they will not turn from it.*”

Bethesda Youth have started on the way they should go

SUM/Lazarus Fund

June 2017 Report

(Phone 410-749-1563)

FOOD PANTRY DATA:

We saw	179	Families	423	Singles
	3	Families requesting \$ assist.		
	20	Persons receiving Prescriptions		
	17	New clients		
We issued	1	Denial (food and assist.)		
We distributed	226	Bags of food		
	210	Bags of government food		
	16	Bags of donated food		

We are in need of **ready-to-eat foods** like canned ham, Spam, beef stew, chili, Vienna Sausages, corned beef, complete boxed dinners, pasta, rice, fruit, peanut butter, jelly and crackers, **breakfast foods** like cereal, oatmeal, pop tarts, fruit bars, **Boxed Dinners** like Hamburger/Chicken/Tuna Helper, canned/dry soups, drinks/juices, snack items like fruits and puddings. **Large diapers sizes 3, 4 or 6 are needed.** **Personal Hygiene** Items such as deodorant, soap bars, shampoos, lotions, tooth brushes & tooth pastes, women’s personal items, razors, shaving cream, chap stick, etc. are needed. Funds disbursed this month: \$3,673.41 **Urgent Volunteer Needs:** If you are able to volunteer but are not sure what it involves, please come visit us on **Tuesdays or Thursdays between 10 AM and 2 PM** to see how this service to the community works. **You do not have to commit every week, as even once would be a big help.** Please give this a try. Thanks and God bless!

Stories from the Basement
Help and Outreach Point of Entry, Inc.

By Donna Clark RN, Director

Just as July 1st marks the beginning of the church’s fiscal year it is the beginning of our fiscal year. We were blessed with a great deal of grant money for adult dental care during 2016/2017 allowing us to serve 136 different people with 158 appointments. As I gathered data for the grant reports I was amazed at what God allowed us to do with the money. During those appointments we paid for : 53 Initial exams, 18 Surgical Consultations, 48 x-rays (Bite Wings), 15 panoramic x-rays, 25 cleanings, 18 surgical consultations, 268 extractions, 36 surgical extractions, two oral biopsies, four full mouth debridements, 177 fillings, Perio Scaling of 32 quadrants, three crowns with buildup, and six root canals. Collaborating dentists provided 18 extractions, 1 Alveoplasty, and 10 fillings pro bono. The total cost of the program was \$49,331 (average \$362 per person.) PRMC ED reported that in CY 2015 they had a total of 2,150 dental related visits at a cost of \$315,525. From November 2016 until June, 27, 2017 they had 1229 dental related visits at a cost of \$279,376. Although these numbers reflect only 8 months this is 821 (38%) fewer people seeking emergency dental care and costing the hospital ED \$36,149 less than previous year. We feel we have made a significant impact of the dental health of the community we serve.

The grant money has been used up and we are waiting to hear about another grant. The Parson’s Foundation here in Salisbury continues to provide funding for people over the age of 60 and living in Wicomico County. As we see our seniors obtain relief from painful teeth we feel it is a blessing to be able to help people’s lives improve.

Proverbs 21:13

Senior Singles

will eat and fellowship at

RED ROOST RESTAURANT

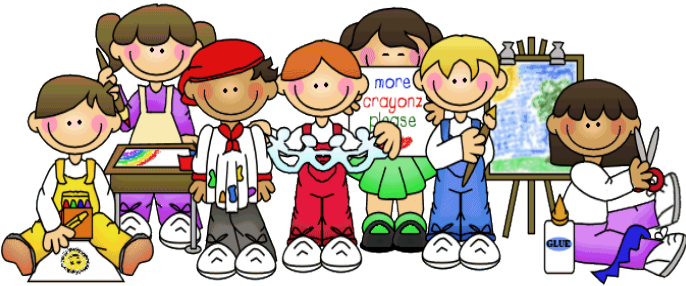
Thursday, August 10th
5:30 PM



Come and enjoy good food and the soothing sounds of Banjo by Matt Creamer

RSVP to Sandy 410 742 8855
By Wednesday, August 9th

CHILDCARE DURING 9:00 AM
CONTEMPORARY SERVICE



Parents are welcome to bring children, **age 5 and under**, to the **nursery** for child care during the 9:00 contemporary service, until our regular Sunday School schedule begins in the fall.

Six Things God Sees About YOU

1. God sees your heart.
 2. God sees your potential
 3. God sees you making good choices.
 4. God sees your spiritual growth.
 5. God sees your thoughts.
 6. God sees your future.
- God knows and loves you the way you are today. God also loves the person you’re becoming. We can trust God to always be with us - no matter what the future brings!

Checking on Healthy Habits

- 1 Eat meals that include veggies and fruit.
2. Make sure you eat healthy snacks.
3. Drink plenty of water.
4. Be active throughout the day.
5. Rest and sleep when needed.
6. Take time to do things you really enjoy.
7. Take quiet time to be by yourself.
8. Spend some time outdoors.
9. Share your feelings with others.
10. Take time to pray and listen to God daily.

College
Addresses!

As your college student begins school this fall, please remember to forward their new address (dorm or off-campus) to the church so that we may include your student in Agape Grapevine, College Communications and (Goodie Boxes)!!!!!!

Also, if your child/student has the same post office box all 4 years, please confirm each year for us!

We love keeping in touch with our college students! Thank You!

Alzheimer’s Update
(continued from Pg. 2)

The toll Alzheimer’s takes on patients and caregivers, I learned of the need for a support group that met when working people could attend. I wasn’t sure I could do it; I wasn’t sure I wanted to, but that made me feel guilty. I prayed about it until one-by-one God erased my doubts. The church offered us a meeting room. I completed Facilitator Training and, with Jan McCabe’s help, we started our group. As a new member told me recently, sometimes, just having someone to listen means a lot! Some of our members and friends walked in the “Walk for a

Cure” before the support group has its first meeting. Bethesda Caregivers will walk again on **November 4, 2017**. It appears we will more than double the size of our team” If you want to walk with us, sign up on-line by going to: Or paper registration form. Thanks again for your continued prayers and support! Ann Wilmer 443 493 0268

