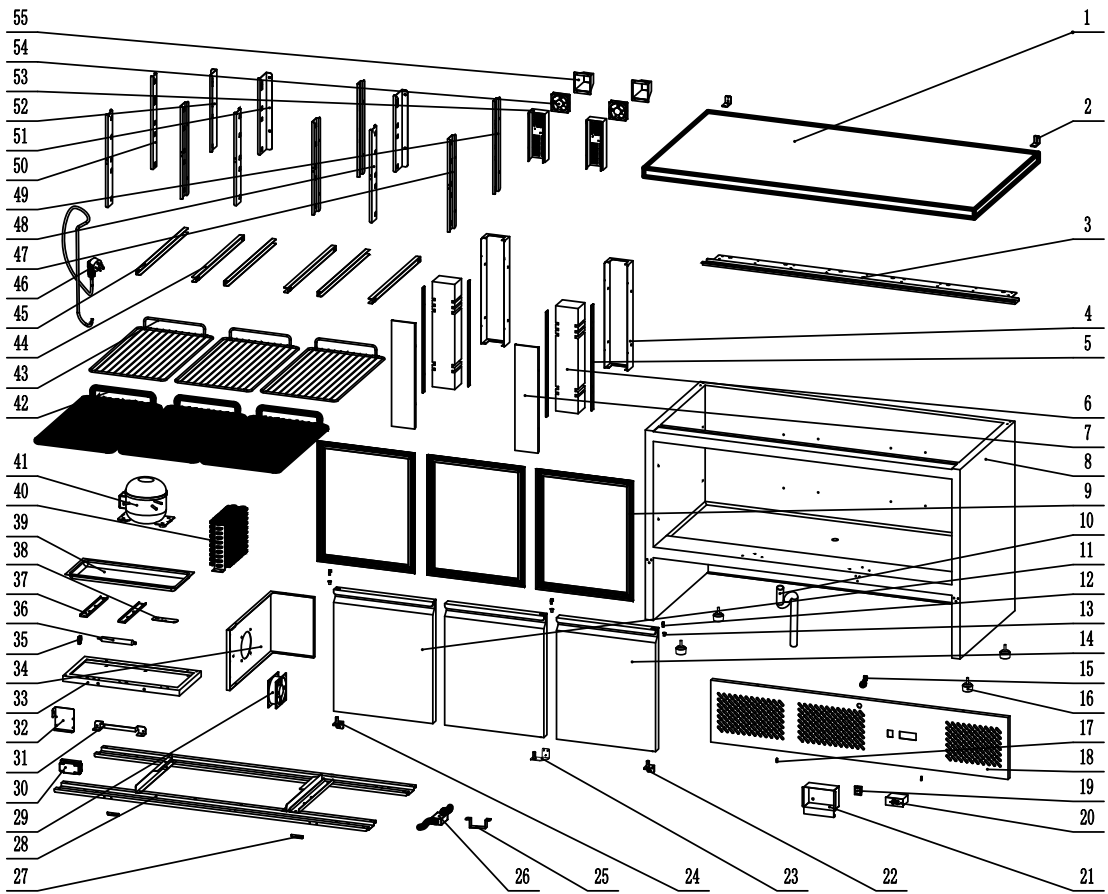


ESL3851GR



NO	NAME	ENGLISH NAME	CODE	MATERIAL	QTY
1	ESL3851GR顶盖组件(201)		ESL3851GR.01-201	1365×700×35	1
2	2顶盖支架	Canopy Bracket	38010103	φ 1.5×73×24/镀锌板	2
3	1SSC03 GR-3851台面下梁	Under Desktop Mullion	385140110	1.2×1355×136/201油磨横纹	3
4	ASSC01 2015竖中梁后板	Back Plate Of Mullion	38000455	SUS430/0.5×226×483/油磨	2
5	(装配)2015竖中梁拼连条	Plastic	W0410235	长452/灰色PVC	4
6	2015竖中梁泡沫块	Foam	W0499090	452×97×78/EPS/21kg/m3	2
7	ASSC01 2015竖中梁前板	Front Plate Of Mullion	38000454	SUS430/0.5×126×462/油磨	2
8	ESL3851GR箱体部件(201)	Cabinet Part	ESL3851GR.20-201		1
9	新沙拉柜门封条	Gasket	W0404902	插脚安装尺寸493×398/软PVC截面VJ1	3
10	水封	Drain Pipe	W0409025	φ 25 φ 18 半软白色塑料 长198mm	1
11	ESL3800GR左门组件(201)	Left Door	ESL3800GR.15-201	430×35×525	1
12	6 GR-上轴	Axis	38005110	201	3
13	ESL门上轴套	Door Shaft Sleeve	W0409300	尼龙66	3
14	ESL3800GR右门组件(201)	Right Door	ESL3800GR.26-201	430×35×525	2
15	冰箱锁	Locker	W0604007	锁舌长度:46mm/钥匙通用于任何锁	1
16	调整脚	Leg	W0409004	塑料脚、高度30(318用、制冰机、沙拉柜)	4
17	前置下轴	Axis	38008630	201	2
18	4SSC01 GR-3850前置板	Front Cover	385020220	0.6×1330×338/201油磨横纹	1
19	RLEIL防水船形开关	Power Switch	W0308019	31×22/绿色(四脚双刀单掷联动/RL2型/250V16A)	1
20	220V电子温控器(R)	Digital Controller	W0302150	蓝色显示/220V50Hz/冷藏单点20(8)A/帝思小精灵	1
21	L ESL-电气盒罩	Wire Box Cover	380002011	镀锌板/0.5×360×351/	1
22	6 GR-右下铰链		3800.5070	3.0/201	1
23	GR-中铰链		3850.0506	201	1
24	6 GR-左下铰链		3850.5130	3.0/201	1
25	2电源适配器支架	Transformer Bracket	27500257	1.0×137×25/镀锌板	1
26	1.5A适配器	Transformer	W0399112	输入100-240V/50/60Hz /输出24V(DC)/1.5A/36W	1
27	2 GR-3800前置支架	Front Cover Bracket	38000862	1.2×50×30.5/镀锌板	2
28	GR-底框架	Bottom Framework	S903 STD.27		1
29	12038直流风机引线加长到900	Fan Motor	W03011011	DC12~26.8V/0.3A/3W/3200RPM/大于132CFM	1
30	接线盒	Wire Box	W0309001	DC-2/250V/2.5mm2/阻燃ABS/	1
31	2 GR-3800机器底板支架	Bottom Plate Bracket	38000859	1.2×270×56.6/镀锌板	1
32	2 GR-3800接线盒衬板	Wire Box plate	380008611	1.5×114.5×110/镀锌板	1
33	2SSC01 GR-3850机器底板	Bottom Plate	38500856	0.35×719×354/镀锌板	1
34	2SSC01 GR-3850风道板12038	Airflow Plate	385008551	0.5×869.5×297/镀锌板	1
35	日光灯卡子(小)	Clip	W0409255	白色塑料	1
36	干燥过滤器	Dry Filter	W0204101	φ2.5-φ5.2-φ19×165/XH-9	1
37	2压缩机搁档		90450854	1.2×240×42/430-2B	2
38	2 ESL-冷凝器底板	Bottom Plate	38000858	0.7×105×35/镀锌板	1
39	机器底板接水盘	Drain Pan	W0411077	1.5×482×207(内深23)/ABS吸塑	1
40	钢丝冷凝器07-04A	Condenser	W0203211	φ 4.75/钢丝冷凝器	1
41	R600a压缩机	Compressor	W0201162	R600a/220~240V50HzCOPI1.9/97.4W.6A/RSIR/华意	1
42	GR食品架2	Shelf	W04024042	外形尺寸351×590/A3浸塑φ5+φ2.5中间二根φ5	3
43	GR食品架1	Shelf	W04024041	外形尺寸335×590/A3浸塑φ7+φ2.5中间二根φ7	3
44	2搁档(食品架搁档)右	Pilaster	380070301	1.0×552×54/201磨砂	3
45	2搁档(食品架搁档)左	Pilaster	38007030	1.0×552×54/SUS201磨砂	3
46	法式电源线	Power Cord	W0305114	法式插头16A/3×1.0mm2/长2600/3×UT4-5/黑色	1
47	L前搁条右	Pilaster	380070101	0.8×330×87/430磨砂	3
48	L前搁条左	Pilaster	38007010	0.8×330×87/SUS430磨砂	3
49	L后搁条右	Pilaster	380070201	0.8×330×77/430磨砂	1
50	L后搁条左	Pilaster	38007020	0.8×330×77/430磨砂	1
51	L后中间搁条右	Pilaster	380070501	0.8×330×106.9/430磨砂	2
52	L后中间搁条左	Pilaster	38007050	0.8×330×106.9/SUS430磨砂	2
53	BSSC03 GR-竖中梁支架		038006022	0.5×346×321/430油磨	2
54	12038直流风机引线加长到900	Fan Motor	W03011011	DC12~26.8V/0.3A/3W/3200RPM/大于132CFM	2
55	直拉沙拉柜蒸发器风机罩	Fan Cover	W0409867	120×120×120/沙拉柜/灰色无毒ABS	2