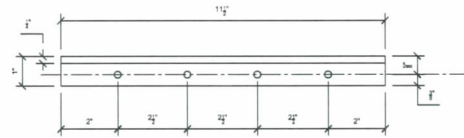


PLAN VIEW OF SHUTTER RAILS

SCALE: 6"=1'-0"

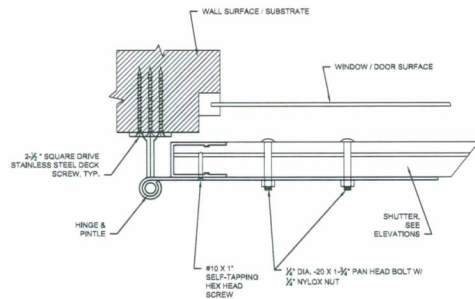
- NOTES**
- THIS SHUTTER IS PROTECTED BY U.S. PATENT 7,036,286
 - OTHER PATENTS ARE PENDING
 - GLUE USED FOR ASSEMBLY OF LAMINATIONS TO BE BOSTIC 820 MARINE GRADE URETHANE SEALANT
 - POLYCARBONATE LAYER TO BE LEXAN 8034 UNCOATED POLYCARBONATE SHEET BY GE STRUCTURED PRODUCTS



STORM BAR DETAIL

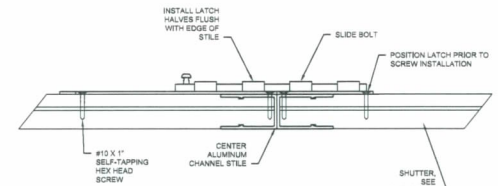
SCALE: 6"=1'-0"

- NOTES**
- THIS SHUTTER IS PROTECTED BY U.S. PATENT 7,036,286
 - OTHER PATENTS ARE PENDING
 - STORM BAR MATERIAL TO BE 6061 ALUMINUM



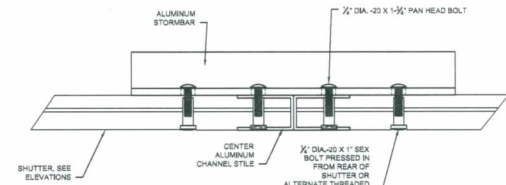
HINGE ATTACHMENT TO SUBSTRATE

SCALE: 6"=1'-0"



SLIDEBOLT ATTACHMENT

SCALE: 6"=1'-0"



STORMBAR ATTACHMENT

SCALE: 6"=1'-0"