



CITY OF REFUGE

BALTIMORE



Table of Contents

- Introduction
- Development Plan
- Fundraising



INTRODUCTION



About us

City of Refuge (CORB) is a registered 501(c)3 faith-based organization that helps individuals transition out of crisis. CORB exists to bring light, hope, and transformation to individuals, families, and communities.

For 20 years, the organization has been committed to developing programs centered on intentional assistance and meaningful relationships to all people in the Baltimore area, no matter the stage of their life or their background.



The Team



Billy Humphrey

Founder & CEO

Pastor Billy Humphrey is committed to bringing light, hope and transformation to the South Baltimore community and beyond. He began working in a food pantry 20 years ago and transformed that small program into the organization that City of Refuge has become today.



Keith Hunley

Vice President of Operations



Deanna Hunley

Vice President of Finance



Randyl Music

Vice President of Development



Neal Carter

Director of Youth Empowerment



Euclides Bravo

Director of Housing



Althea Whieldon

Director of Rapha



Board Members



Aaron Jones

President, New Hope Church



Betsy Lewis

Treasurer, MedStar Health



George Greene

Secretary, Red Star Productions



Heather Chapman

United Way of Central Maryland



Kelly Baker-Wiese

Comal Independent School District



Chris Maynard

Tuerk House



Denise McCumbers

MedStar Harbor Hospital



James Izzard

US Federal Government



The Journey

2003

Pastor Billy begins organizing a team that delivers basic necessities such as food, hygiene, and household items to communities in need through their church, Pathway Church of God, located in Brooklyn.

2018

The team separates the business from the church and becomes City of Refuge Baltimore (CORB), obtaining status as a registered 501(c)3. A small space is rented from their church to house CORB in Brooklyn.

2020

CORB purchases a new, larger property in Brooklyn at 3501 Seventh Street in December 2020 to provide a facility that can accommodate all programs under one roof.

2021

All programs become fully operational at the new property in February 2021. CORB doubles the size of its staff in March of 2021.



City of Refuge Baltimore's philosophy of assistance is to offer a "hand up" rather than a "hand out." The goal of this organization is to create a deeper, more meaningful impact in the community and in the lives of individuals in order to break the cycles of poverty. CORB continues to strive to be a "one-stop shop" for people in need.



Core Values



PASSION

CORB works with energy and excitement toward fulfilling its mission and seeing lives changed for the good. The team deeply loves their community and considers it a great honor and responsibility to care in any way they can, any time they can. CORB remains attentive and faithful to the work.

DIGNITY

CORB seeks to meet people in whatever stage of life, from whatever background, and walk with them in intentional relationships. As much as CORB has the privilege to serve, so too is there much to learn as a part of the whole community.

EXCELLENCE

CORB refuses to cut corners. Instead, with great attention to detail, the organization serves its community to the best of its ability. In order to do the most good, CORB must remain dedicated and faithful to the tasks at hand. Every task and every conversation shall be treated as the most important part of the day.

INTEGRITY

CORB values diversity within its board, staff, and volunteers to bring in ideas and experiences from different individuals. An open dialogue is encouraged regarding inequalities within surrounding communities and the nation. It is of utmost importance to live and work in an honest and open manner.



Current Partners

CORB partners with multiple organizations and non-profits in the Baltimore area to meet the needs of its communities.

- United Way
- Maryland Foodbank
- Amazon Donations
- World Central Kitchen
- Mera Kitchen (MK Foundation)
- Baltimore City Office of Sustainability Resiliency HUB
- Anne Arundel County Partnership for Youth, Children, & Families
- Greater Baybrook Alliance
- SB7 Coalition
- Medstar Harbor Hospital
- Mercy Hospital
- Drink at the Well
- Araminta
- Rowdy Orbit
- Project Opportunity
- The Mission Continues
- ReigniteED
- Grow Home
- City of Refuge Atlanta
- House of Cherith



Understanding the Need

City of Refuge is located in the midst of one of Baltimore's most struggling neighborhoods, where one will find the state's highest incidences of poverty, incarceration rates, and teen pregnancies. In South Baltimore, the problems are pervasive, and the needs are enormous.

- 31% of residents and 28% of families in South Baltimore live below the Federal Poverty Level.
- Our neighborhood is one of the most violent neighborhoods in America with a ranking of 4 (100 is the safest).
- 36% annual unemployment rate, compared to just 5% county-wide.
- 69% of children are living in single-parent households.
- On the Hardship index—which calculates six socioeconomic indicators: housing, poverty, unemployment, education, income, and dependency—our neighborhood measures 76 (100 = most hardship).



Our Programs

Over two decades of research and experience in community development has proven that for individuals born into poverty, neglect or absence of services leaves individuals with only a **13% chance to escape poverty**.

Through supportive services fueled by innovation and a collective impact approach, CORB seeks to lead individuals and families on a journey to self-sufficiency for generations to come.



Our Programs



HEALTH & WELLNESS

CORB provides access to fresh and healthy food for 2,000 individuals weekly through daily lunches, a weekly food pantry which gives an average of 50lbs per household per week, a baby pantry that serves 150 infants per month, and childrens hygiene supplies.



WORKFORCE TRAINING

Programming that provides skills and resources such as hard and soft skill training, GED prep, IT Training, and entrepreneurship serves 25 students weekly to help them secure employment. Classes beginning in January 2022 include solar panel installation and plumbing.



SUPPORTIVE HOUSING

The housing team provides low-barrier assessment bridge housing in conjunction with short- and long-term case management and a variety of supportive services that cater to each individual's specific needs, as well as beds for 10 individuals on campus.



YOUTH EMPOWERMENT

CORB serves up to 45 high school students weekly through enriching year-round programs to help them maintain grade levels, participate in extra-curricular activities, and break the cycle of poverty. The Level Up after-school program provides a recording studio for students to record and mix music and podcasts.



ANTI-HUMAN TRAFFICKING

Rapha, CORB's anti-human trafficking outreach program, works to raise awareness on the issue of human trafficking. Through weekly programs that serve up to 8 individuals at a time, relationships are facilitated for individuals who have been or are currently being exploited.



Expected Reach

CORB currently serves an average of 2,000 people per week. With your help, the organization can serve an average of **3,000 people per week** in holistic ways, meeting people in every area of crisis and connecting them to the programs and services that would help them most.



WORKFORCE TRAINING

Increase from **25 to 375 students** enrolled per week.



YOUTH EMPOWERMENT

Increase from **45 to 250 students** in programs weekly.



ANTI-HUMAN TRAFFICKING

Increase from **8 to 24 women and children** served per week.



Impact

A 10-year study by the Brookings Institution found that there are four keys to entering the middle class in this country:



**WORKFORCE
TRAINING**



**YOUTH
EMPOWERMENT**



**SUPPORTIVE
HOUSING**



**HEALTH &
WELLNESS**

If all four of these key areas are addressed, there is a **93% chance** that individuals will be middle class by middle age.

If just one of these key areas is missed, there is an **87% chance** that the individual will live in poverty all of their life.



Program Expansion

With an expanded and renovated facility, City of Refuge Baltimore will be empowered to improve and expand upon many of their current programs and services.



- This renovation will provide enough space for up to 100 beds on campus, a **10X increase** over current capacity. This will include 20 units designated for women and their children who are in crisis and 15 beds designated for women who have experienced sex trafficking or sex exploitation.
- A larger, updated workshop space will allow space and resources to provide trade-specific classes in the Workforce Development space. CORB currently provides four career paths and, with this expansion, will provide as many as **25 career paths**. Funding will enable CORB to provide classes such as plumbing and construction, which require lab rooms designed for their training equipment and programs.
- With updated facilities and in-house resources, CORB's social work team can increase its caseload from 40 cases to **over 200 cases per month**.



Future Programs

In addition to the expansion of the current programs, a renovated facility will allow CORB to provide the following programs and services to its communities:

- Childhood development center that can care for **20-30 children at a time.**
- Accessible health clinic that offers basic primary care functions including health, dental, and vision services with the potential to serve **over 300 people per month.**
- Cafe that will provide food to the community while offering a chance to sit and enjoy a meal, rather than just move through a line.



Case Study

CITY OF REFUGE ATLANTA

In July of 1997, Pastor Bruce Deel was asked to travel to Atlanta to assist with the closing of a church. A few weeks into the process, he realized that the congregation was not dwindling, but growing—with people desperately in need of basic life necessities.

City of Refuge Atlanta was miraculously donated a sprawling warehouse complex in the heart of the Westside neighborhood in 2003, and opened its doors to the community. From this new hub, City of Refuge Atlanta provides more than food and shelter; help getting into recovery centers, service as an advocate in court, and workforce development. When City of Refuge Atlanta was asked for something it could not provide, the team collaborated with corporations that could provide, including Delta, Coca-Cola, Northern Properties, and Chik-Fil-A.

As a result, City of Refuge Atlanta grew. The organization has expanded to provide programs and services including a kitchen, health clinic, job training, two housing programs, a scholarship fund, and four youth development programs to serve children from six weeks old to high school graduation. **In 2020 alone, the organization placed 492 jobs, housed 484 people, and served 257,400 meals.**



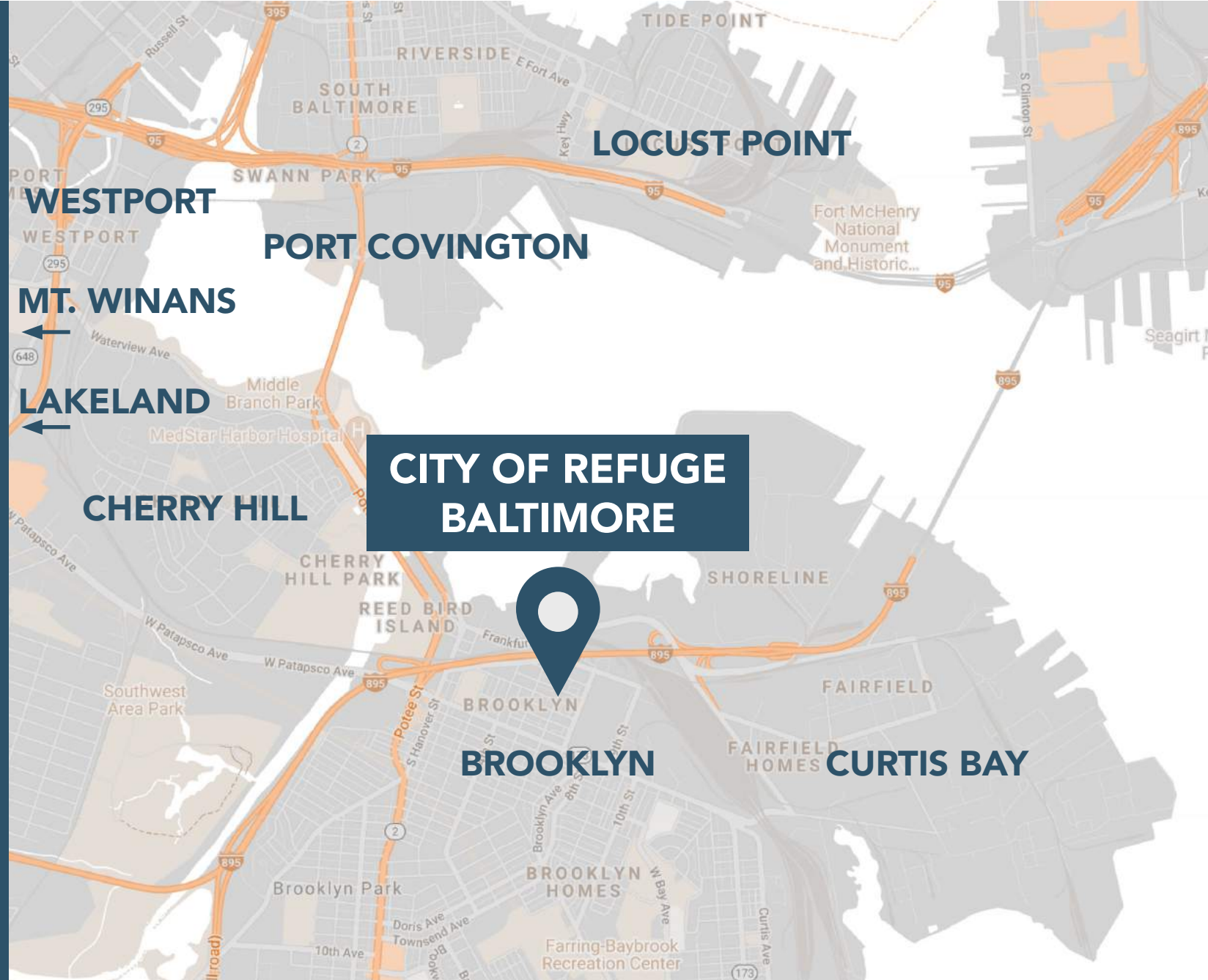
DEVELOPMENT PLAN



Existing Site

3501 7th St, Baltimore, MD 21225

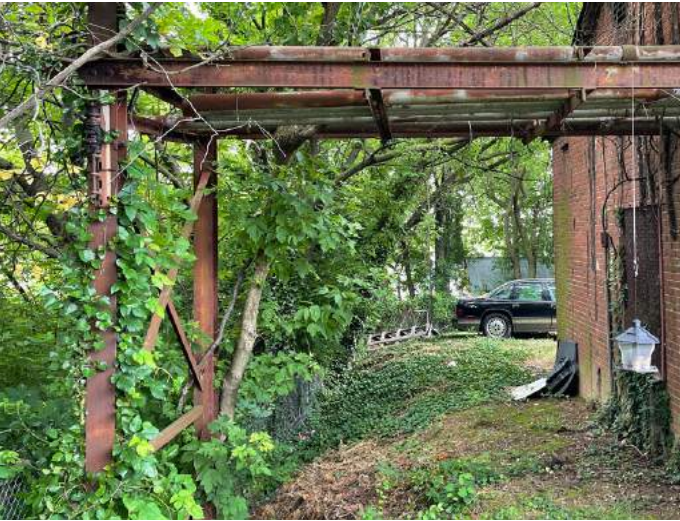
CORB is centrally located on a 3 acre lot in Brooklyn, just a few blocks over from Pontiac Avenue. The facility offers over 30,000 square feet of existing space, with room to grow. This larger space offers greater opportunity to bring light, hope, and transformation to the surrounding communities.



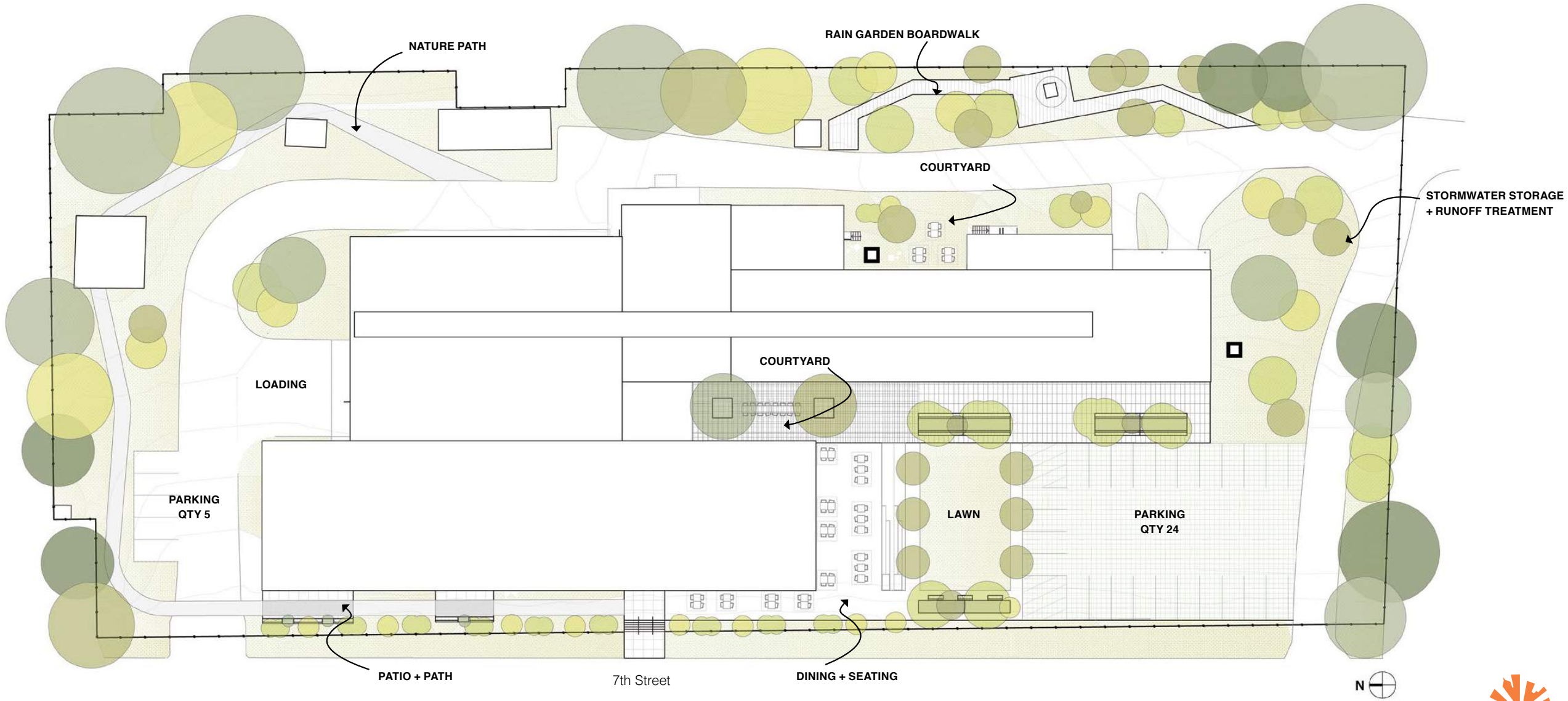
Existing Site



Existing Facilities



Proposed Site Plan



Proposed Programming

FIRST FLOOR



1st FLOOR PLAN

7th Street



Proposed Programming

SECOND & THIRD FLOOR

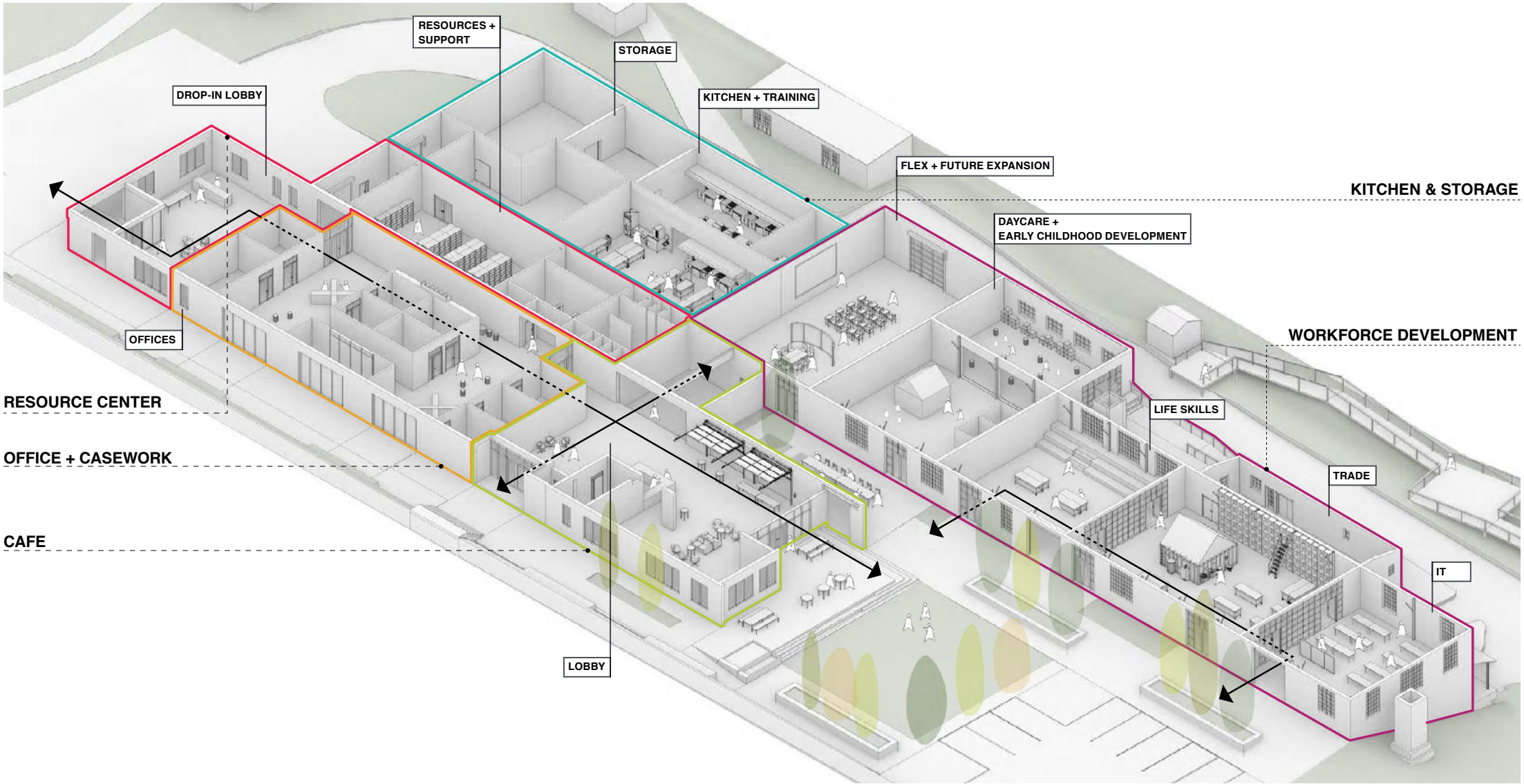


1st FLOOR PLAN

7th Street



First Floor Plan

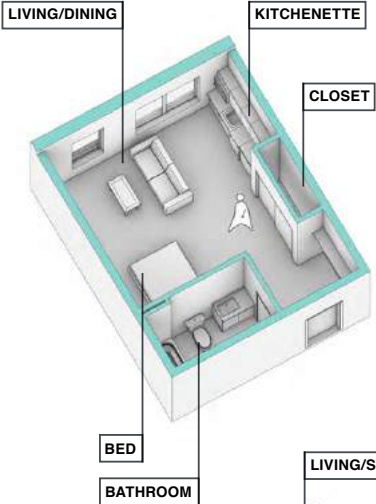


FIRST FLOOR PLAN

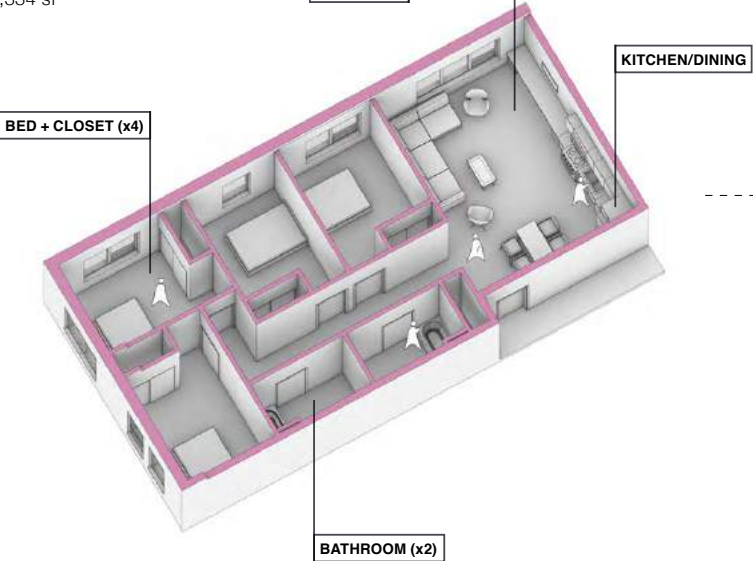


Second Floor Housing Plan

Single Studio
1 Bed
+/-396 sf



Co-Living
4 Bed
+/-1,334 sf

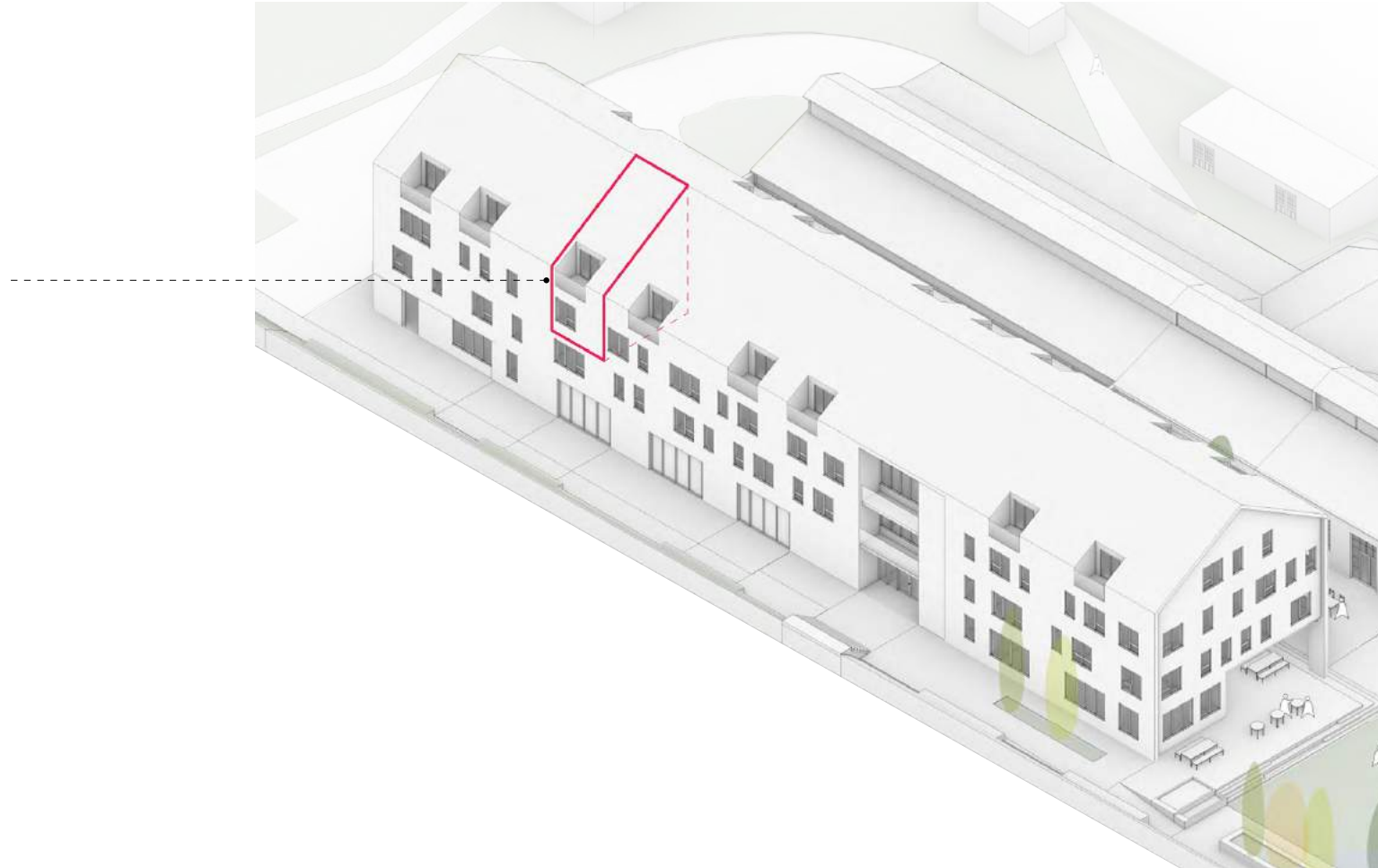
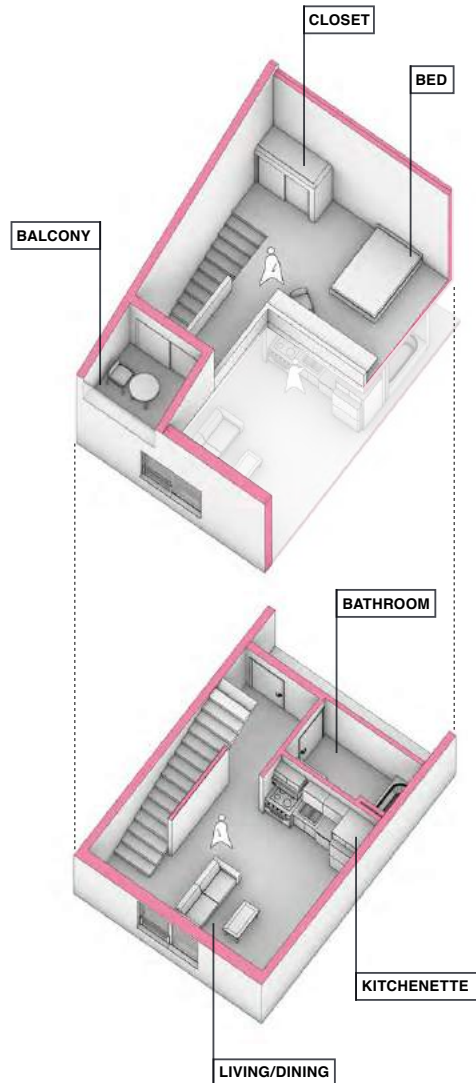


SECOND FLOOR HOUSING PLAN



Third Floor Housing Plan

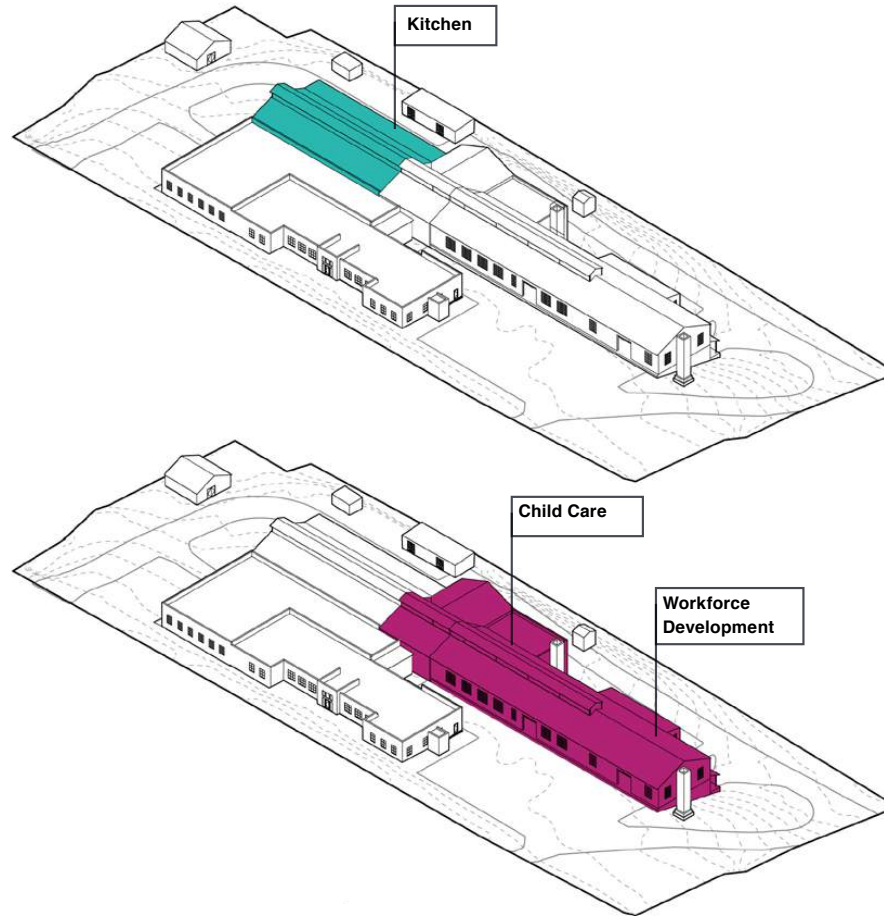
Loft
1 Bed
+/- 636 sf



THIRD FLOOR HOUSING LOFTS WITH BALCONIES

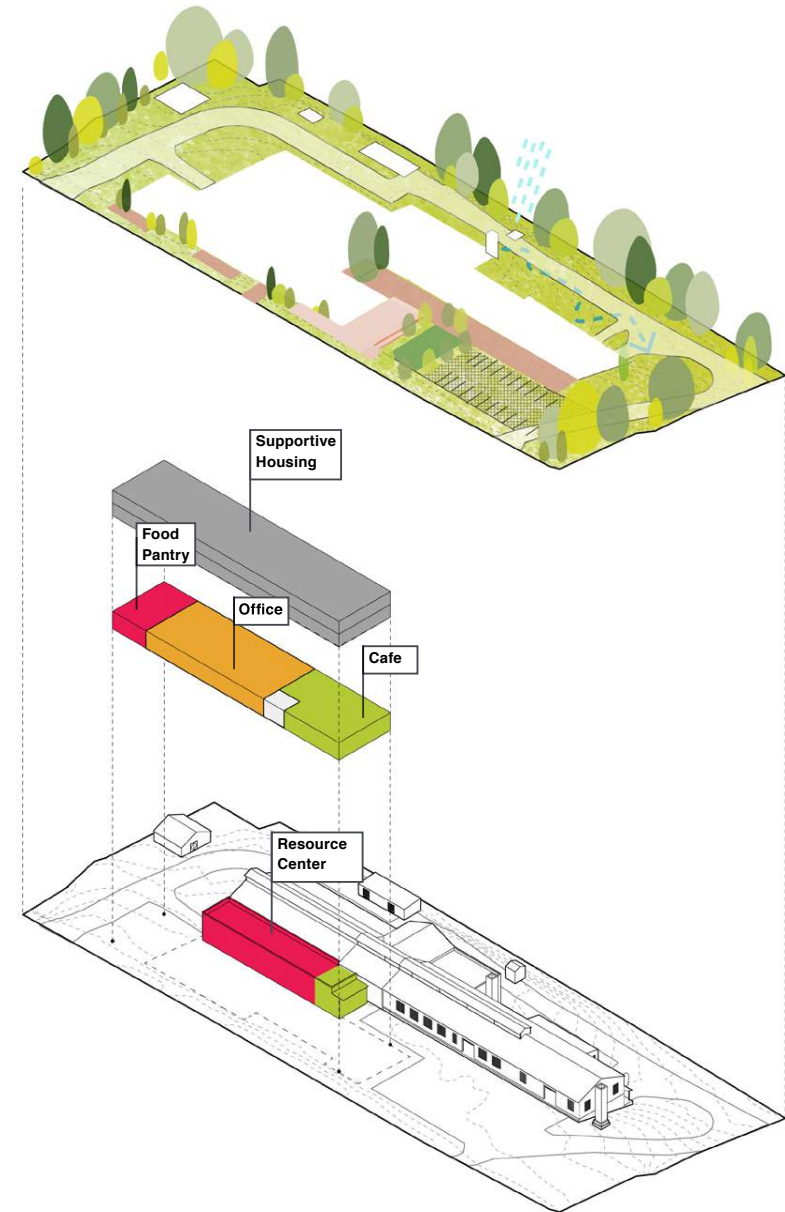


Phasing



Phase I

Kitchen, Child Care, and Workforce Development Renovation



Phase II

New Resource Center, Café, Housing, and Office, Landscape and Site Development



Aerial View from the South East



Exterior & Commons



Resource & Child Development Center



Workforce Center & Kitchen



Cafe & Courtyard



Residential Housing



Permanent supportive housing for women experiencing crisis, homelessness, and/or sexual exploitation



Schedule & Cost Estimate

Design & Permitting

Schedule: 10 months

Phase I: Renovation

Schedule: 12 months

Renovation Cost: \$4,065,215.61

Phase II: New Construction

Schedule: 14 months

Construction Cost: \$8,681,581.37

Site Work Cost: \$519,346.55

Expected Schedule: 36 months

Total Cost: \$13,266,143.53



OPPORTUNITY



Current Sponsors & Supporters

Sponsors

- Port Covington
- Livingston Financial
- Amazon
- G&R Services
- Ambassador Services
- BGE
- Solid Images Inc.
- Weller Development Company
- Tuerk House
- Chick-Fil-A
- Little Eggs Daycare
- Trademark Properties

Foundation Support

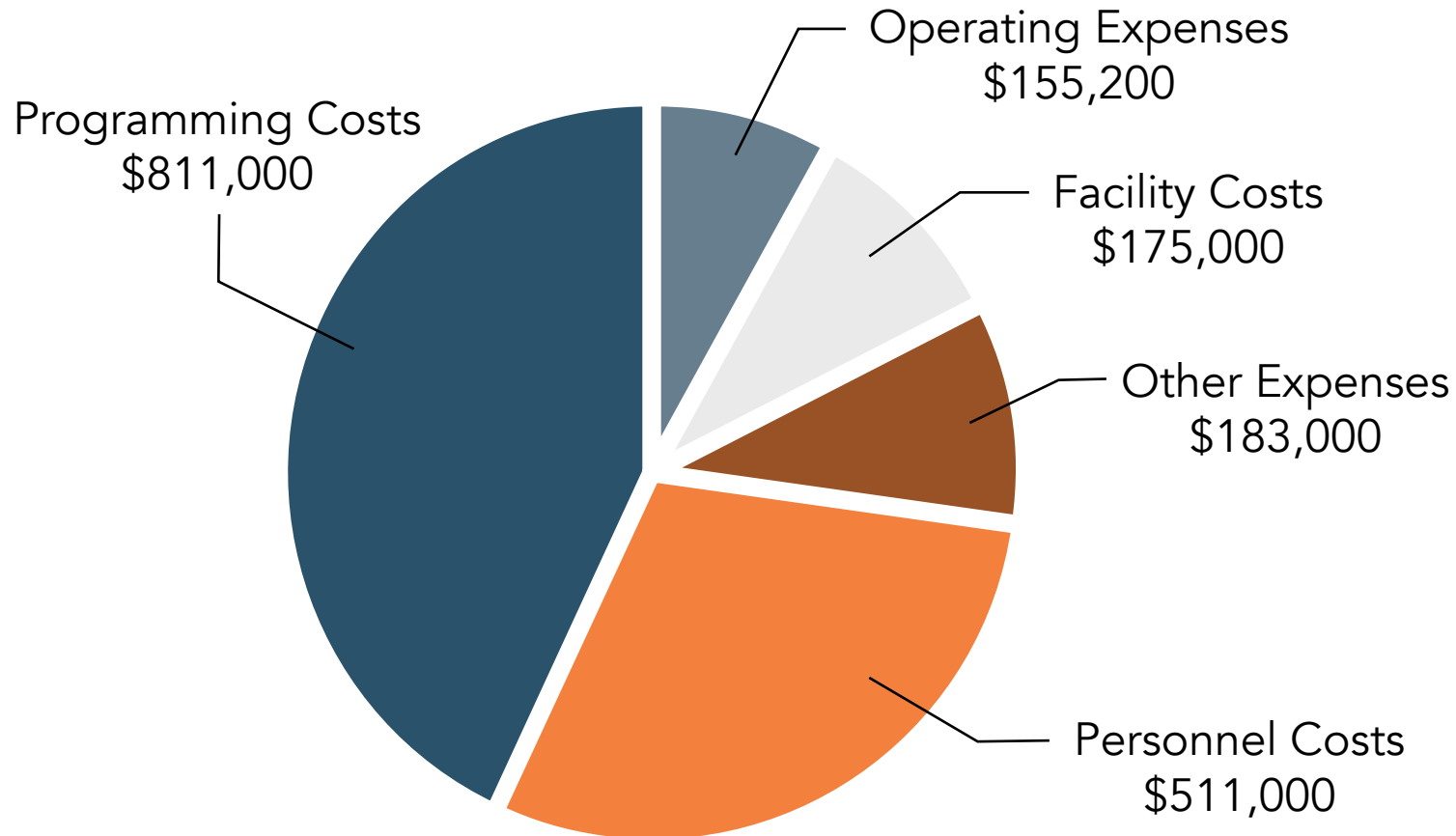
- Leonard and Helen Stulman Foundation
- Abel Foundation
- CTG Foundation
- OSI (Open Society Institute)
- United Way of Central Maryland
- Maryland Food Bank
- Greater Baybrook Alliance
- South Baltimore 7 (SB7)
- Fund for Educational Excellence
- State of Maryland, Baltimore City, Anne Arundel County
- Chaney Enterprises Foundation Fund
- Baltimore Healthy Neighborhoods
- Renewal Foundation Fund



Operating Budget

FY 2022 Operating Budget

Total Expenses: \$1,884,200



Five Year Projected Operating Budget

- FY '22: \$1,884,200
- FY '23: \$2,063,850
- FY '24: \$2,340,285
- FY '25: \$2,533,845
- FY '26: \$3,068,596



The Ask

Capital Campaign Goal:
\$15,000,000



Your support will enable CORB to:

- Serve an additional 1,000 community members per week;
- Increase bed capacity from 10 to 100 beds for women and children;
- Serve an additional 200 high school students weekly in after-school and year-round programming;
- Increase monthly social work caseload from 40 to 200 cases with updated in-house resources;
- Enroll up to 375 students weekly in job training programs, including 50 youth;
- Expand the workforce development center to provide up to 25 career paths for students; currently, we only have four (4); and,
- Provide a health clinic, cafe, and child development center with these renovations.



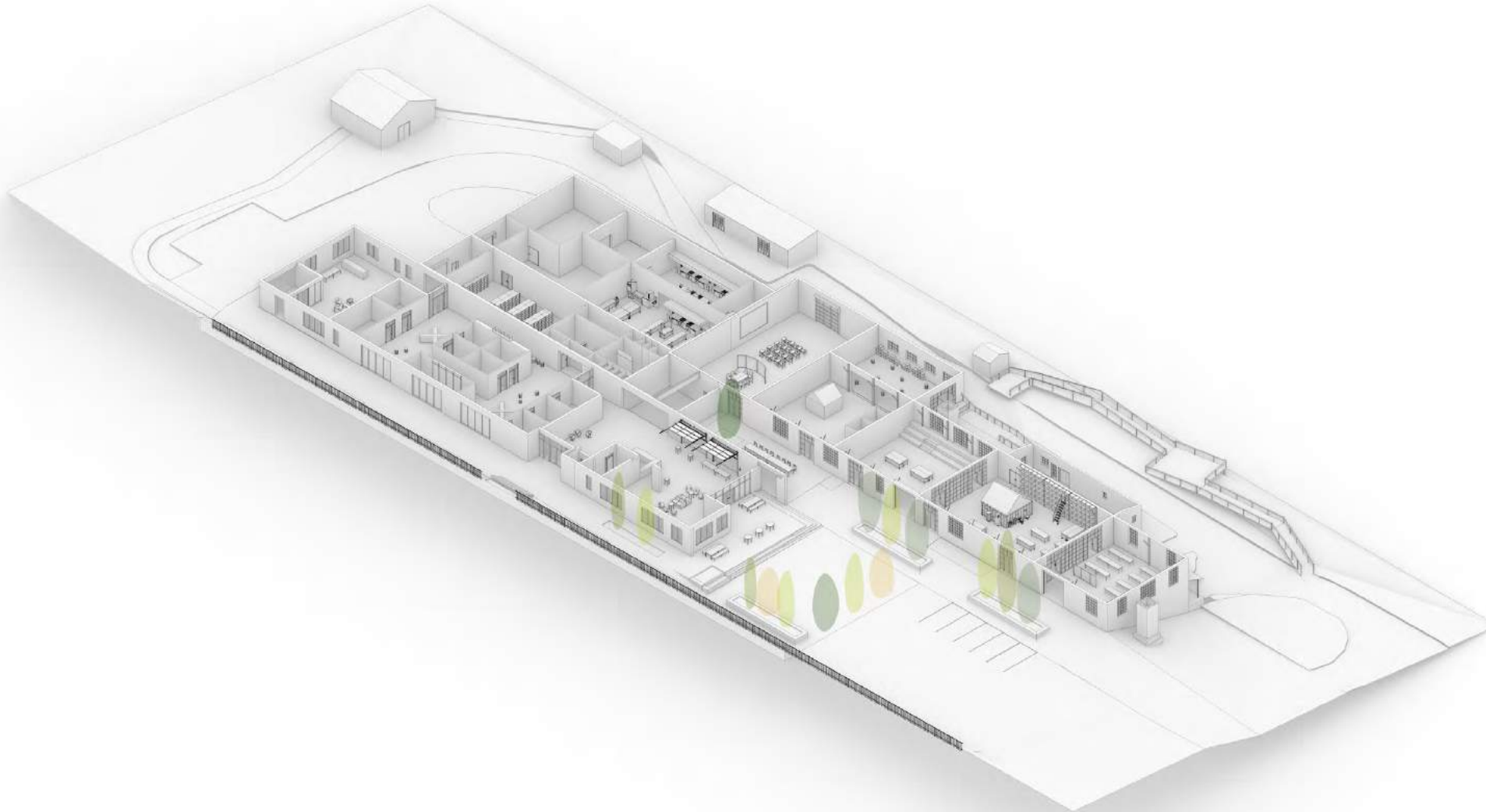
THANK YOU



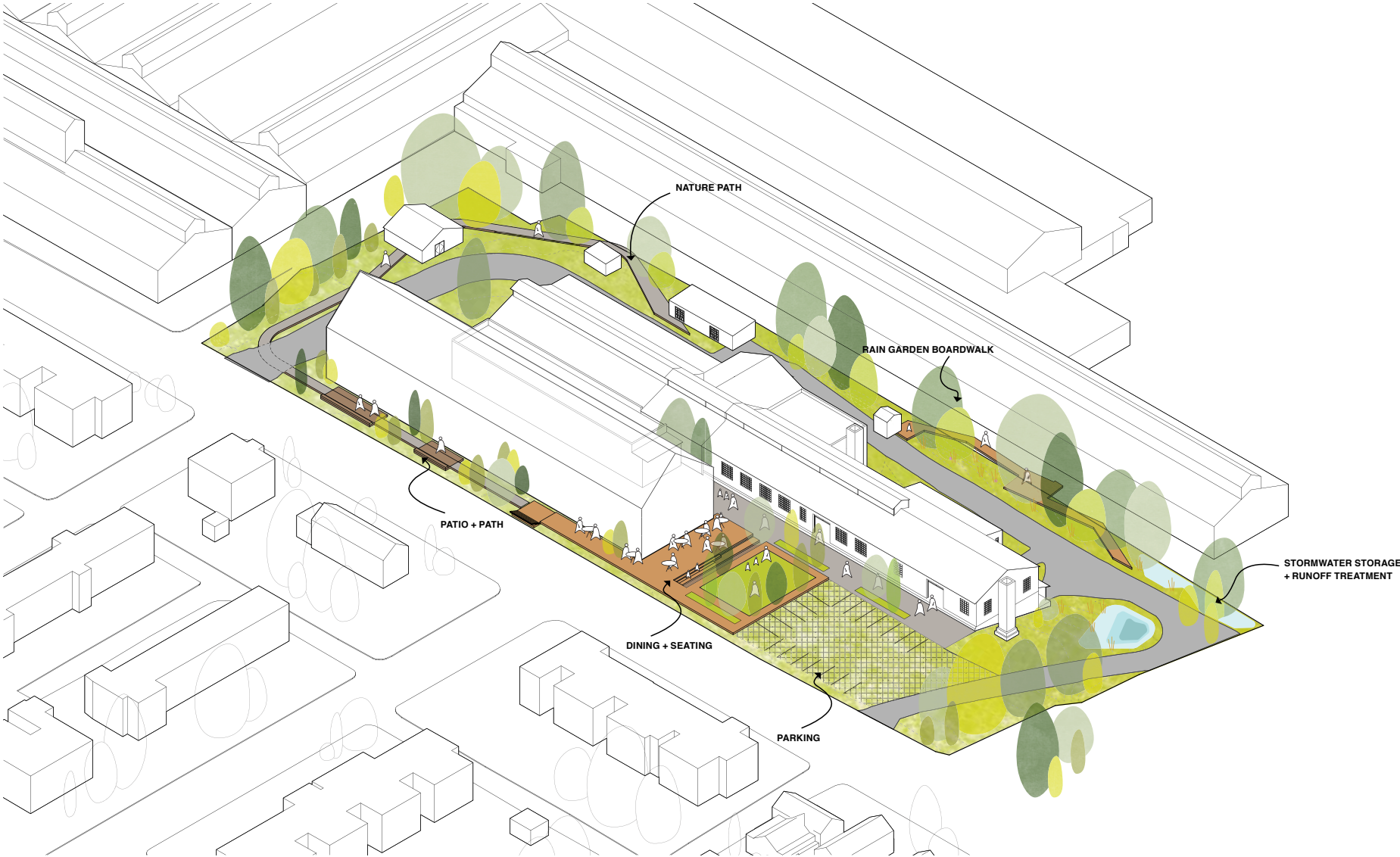
INDEX



Proposed Concept Plan



Proposed Master Plan



Case Studies – Adaptive Reuse



Open Works - Baltimore, Maryland



City of Refuge Atlanta - Atlanta, Georgia



Case Studies – Indoor/Outdoor Spaces



Le Boureg Dwellings - Archi5
Montreuil, France



Thurohus - Effekt
Copenhagen, Denmark



Case Studies – Commons & Courtyards



Core City Park - Prince Concepts
Detroit, Michigan



Core City Park - Prince Concepts
Detroit, Michigan

