

Code of conduct for Jellyfish lakes

In order to keep all jellyfish lakes pristine and healthy, please observe the following rules:

Wash equipment, camera & gear before going into the lake



Don't wear sunscreen or insect repellent. Wear protective clothing instead



No fins and swim slow

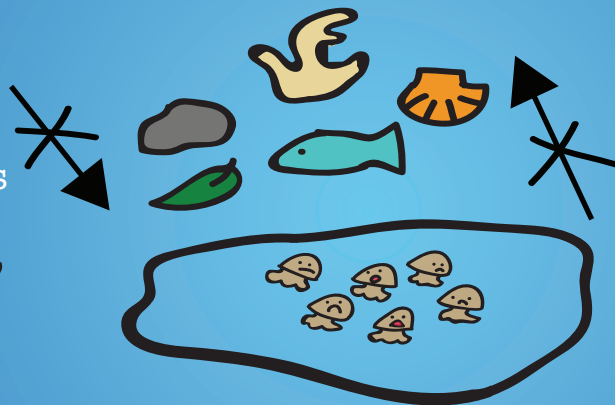


Just look, don't touch

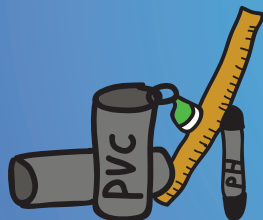
Leave lake behind clean. Take garbage with you



Don't bring anything into lakes



Don't take anything out of lakes



Don't move or touch research equipment

Don't swim to the bottom lake



Enter lake via 1 point



There is a dangerous toxic layer!



Don't SCUBA dive

No fishing or aquaculture

