

Jellyfish Lakes

Some fun facts about the unique jellyfish lakes of Indonesia

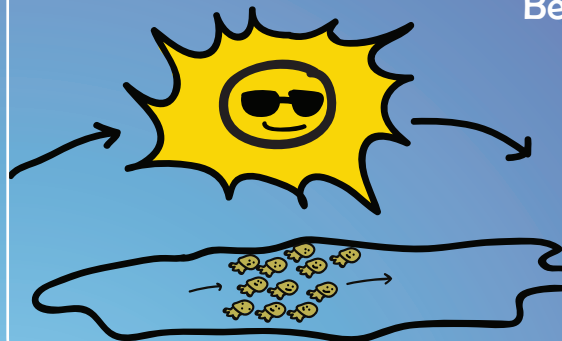


What are marine lakes?

- o Islands of sea
- o 6,000 to 10,000 years old
- o 2-60 meters deep, 50 meters - 1 km long
- o Some species are only found in marine lakes!
- o Less than 20 jellyfish lakes known worldwide
- o Lakes can harbour millions of jellyfish



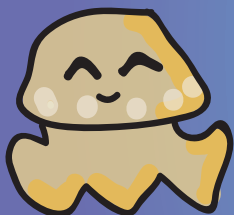
Behaviour of Golden Jellyfish



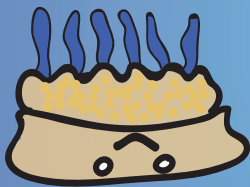
Aggregations of jellyfish can move around the lake, following the sun.

They probably do this to allow their zooxanthellae to produce as much food as possible.

Three jellyfish species you could see in lakes:



Mastigias papua
or the 'Golden Jellyfish'



Cassiopeia sp.
or the 'Upside-Down Jellyfish'



Aurelia aurita
or the 'Moon Jellyfish'

Evolution of Golden Jellyfish

The jellyfish can take on different forms to adapt to the different lakes. The one with the long tentacles is also found in the ocean, while the other ones have evolved in isolated lakes.



Threats to Golden Jellyfish lakes..

There are several major threats to jellyfish lakes:

- o Climate change
- o Invasive species
- o Unregulated tourism

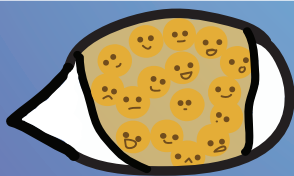
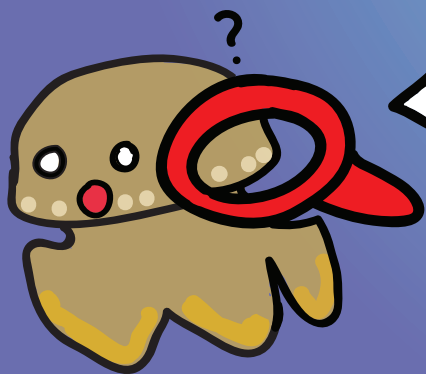


Monitoring projects

A team of scientists, NGOs and students are monitoring jellyfish density and health. They also record biodiversity. The teams visit the jellyfish lakes 2 times a year to keep an eye on the jellyfish populations.

We all have to work together to keep these unique habitats and their inhabitants safe and sound!

Facts about golden jellyfish!



Golden jellyfish have many tiny plant friends in their tissue, who give them food!

They are called 'zooxanthellae' and make food from the energy of the sun.

