



The work of Jennifer Keeler-Milne focuses on the beauty of nature in its many forms as she transforms blossoms, plants, clouds and marine life into objects of desire. The natural world has engaged and provided source material for the artist through direct observation however it's not merely about recording what is seen, it's about creating and sharing the experience of what she feels in the works.

The works on paper are intriguing and masterly in their conception and execution. Initially it may appear that white chalk or gouache has been applied onto black paper to create the images which emerge before us, however the reverse is true. Charcoal is deftly applied with control and skill so that we are deceived by the negative space which offers the viewer an alternative illusion of reality. This is evident in works such as Sea sponge taxonomy (2012) and the other large scaled drawings Wattle 2020 and Japanese Maple (Mt Wilson).

The paintings of natural forms appear from the darkest backgrounds – with subtle, subdued tones to vibrant explosions of colour - the joy in these works is palpable. The soft focus is countered with definition; delicate and precise by bringing the background into the foreground, the illusion of space is created.

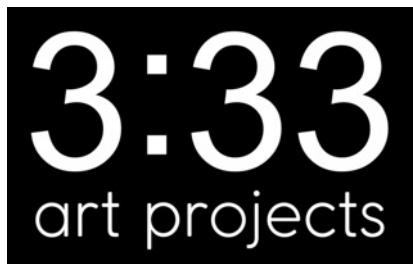
Some of the forms appear to fall away into space giving the work depth and mystery -Gum blossoms (Corymbia ficifolia (2021) and Corymbia (2021) - whilst in other paintings - Wattle's light (2010), Descending green light (2010) and Murano Light (2012) - the forms almost dissolve before us into blurs of colours creating a visual sensation with the ghostly quality of a daguerreotype. These works possess 'another' worldliness, whilst earlier pieces with their Turnersque skies, Night's whisper (2003), Open air swimming (1999) and Surrender (2003), are atmospheric investigations with the sensation of mood enveloping the viewer.

Jennifer Keeler-Milne is a disciplined artist who works within parameters that suit her practice and as a result creates impressive works with strong aesthetic qualities as well as detail and precision. She paints the things that she finds visually engaging particularly Australia's distinctive flora yet it's the transformations of colour, texture and composition that transcend the work beyond the plane of everyday observation.

This is achieved with what appears to be a limited palette but on closer inspection you can see the layers of colour in the background that are progressively built up to create a background of soft textures. A recent residency in Mount Wilson has provided further inspiration and allowed her to expand her vision with delicate leaves depicted in Golden maple (2022) and Maple branch (2022) and fields of saturated colour in Meadow (2022).

The English Romantic poet Keats once said that 'beauty is truth and truth is beauty' and the works of Jennifer Keeler-Milne embody this with sensitivity and sophistication that give her work an aesthetic dimension in which even the most commonplace transcends into an image of great beauty. - *Jane Watters, Director, S.H. Ervin Gallery*

Jennifer Keeler-Milne appears courtesy of Australian Galleries, Sydney. Available works are subject to change, including prices and GST. All prices include GST.



m +61 414 303 036

info@333artprojects.com

333artproject.com

AUSTRALIAN GALLERIES

<https://australiangalleries.com.au>

15 Royston Street [PO Box 282] Paddington 2021



Bundanon Rainforest

2020-2021

Oil on Linen Canvas

92 x 198 cm

\$15,000



Golden Wattle
2022
Oil on Linen Canvas
92 x 198 cm
\$15,000



***Gum Blossoms (Corymbia
Ficifolia)***

2022

Oil on Linen Canvas

92 x 198 cm

\$15,000



Jacaranda Mimosifolia

2021

Oil on Linen Canvas

92 x 198 cm

\$15,000



Wattle
2020
Charcoal on pre
painted paper
114 x 180 cm
\$15,000



Japanese Maple (Mt Wilson)

2022

Charcoal on Prepared Paper

114 x 180 cm

\$15,000



Corymbia
2021
Charcoal on Linen Canvas
77 x 57 cm
\$5,500



Wattle

2020

Oil on Linen Canvas

77 x 71cm

\$6,750



Descending Green Light

2010

Oil on Linen Canvas

61 x 61 cm

\$5,500



Ephemeral Circle of Light

2012

Oil on Linen Canvas

61 x 76 cm

\$6,000



Wattle's Light

2010

Oil on Linen Canvas

61 x 61 cm

\$5,500



Murano Light

2012

Oil on Linen Canvas

61 x 76 cm

\$6,000



Shimmering Lights Venice #4

2012

Oil on Linen Canvas

92 x 122 cm

\$9,750



Venetian Lamps

2012

Oil on Linen Canvas

92 x 122 cm

\$9,750



Surrender

2003

Oil on Linen Canvas

51 x 76 cm

\$5,500



Night's Whisper

2003

Oil on Linen Canvas

62 x 112 cm

\$9,000



Open Air Swimming

1999

Oil on Linen Canvas

61 x 91 cm

\$6,750



Rainforest (Mt Wilson)

2022

Oil on Linen Canvas

41 x 217 cm

\$12,500



Golden Maple
2022
Oil on Linen Canvas
31 x 41 cm
\$3,000



Maple Branch

2022

Oil on Linen Canvas

41 x 62 cm

\$4,750



Beech Branch

2022

Oil on Linen Canvas

31 x 82 cm

\$4,750



Dandelion

2022

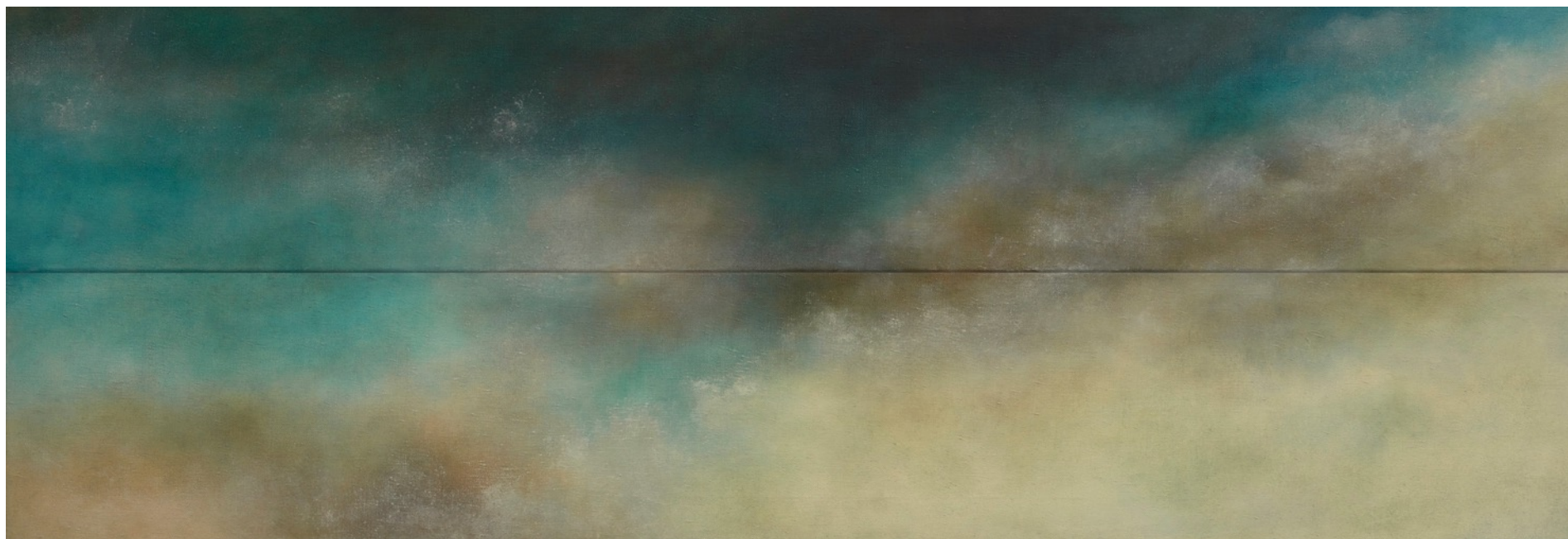
Oil on Linen Canvas

41 x 62 cm

\$4,750



Meadow
2022
Oil on Linen Canvas
61 x 102 cm
\$8,000



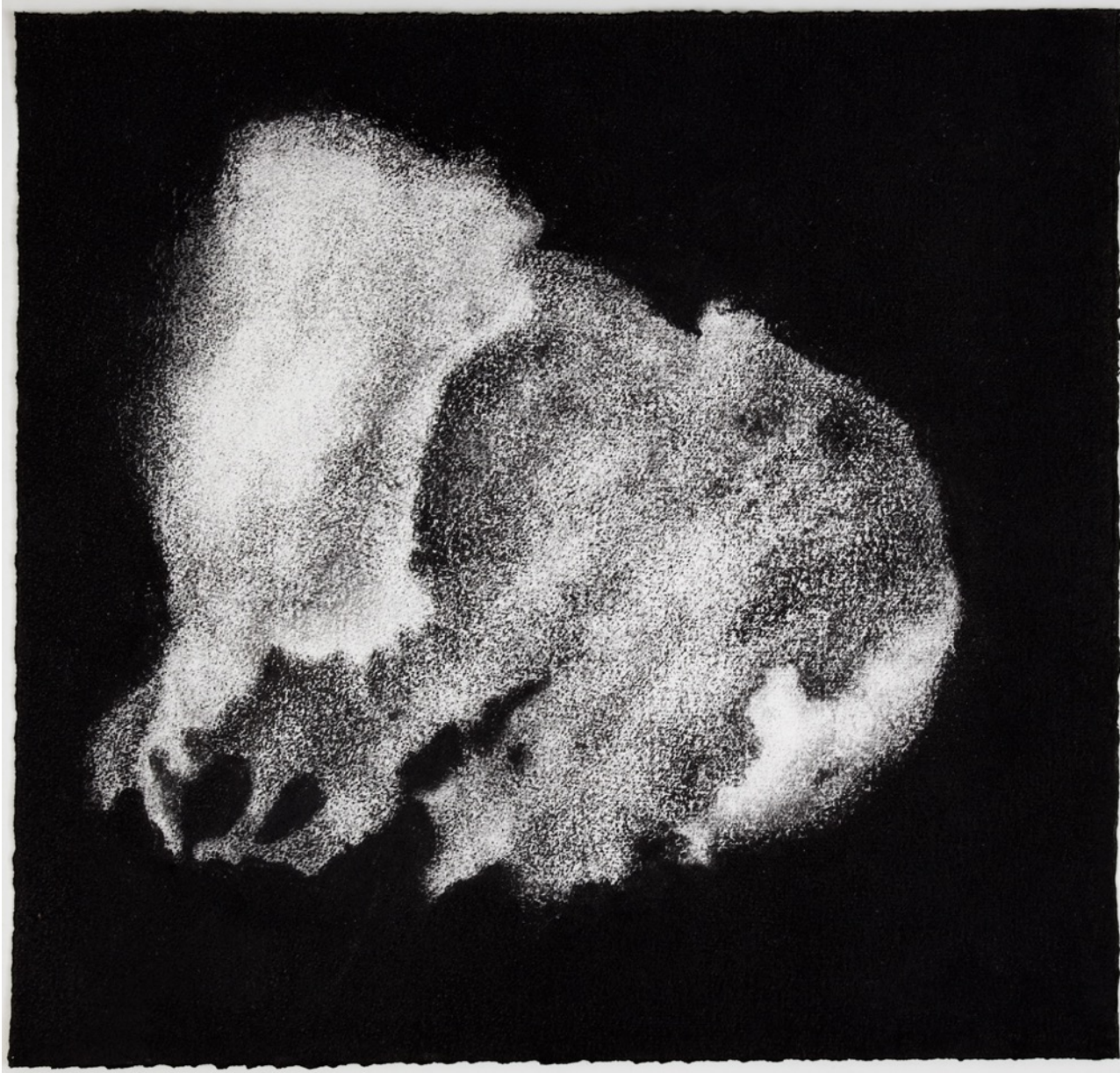
Morning Cloud

2001

Oil on Linen Canvas

62 x 203 cm

\$12,500



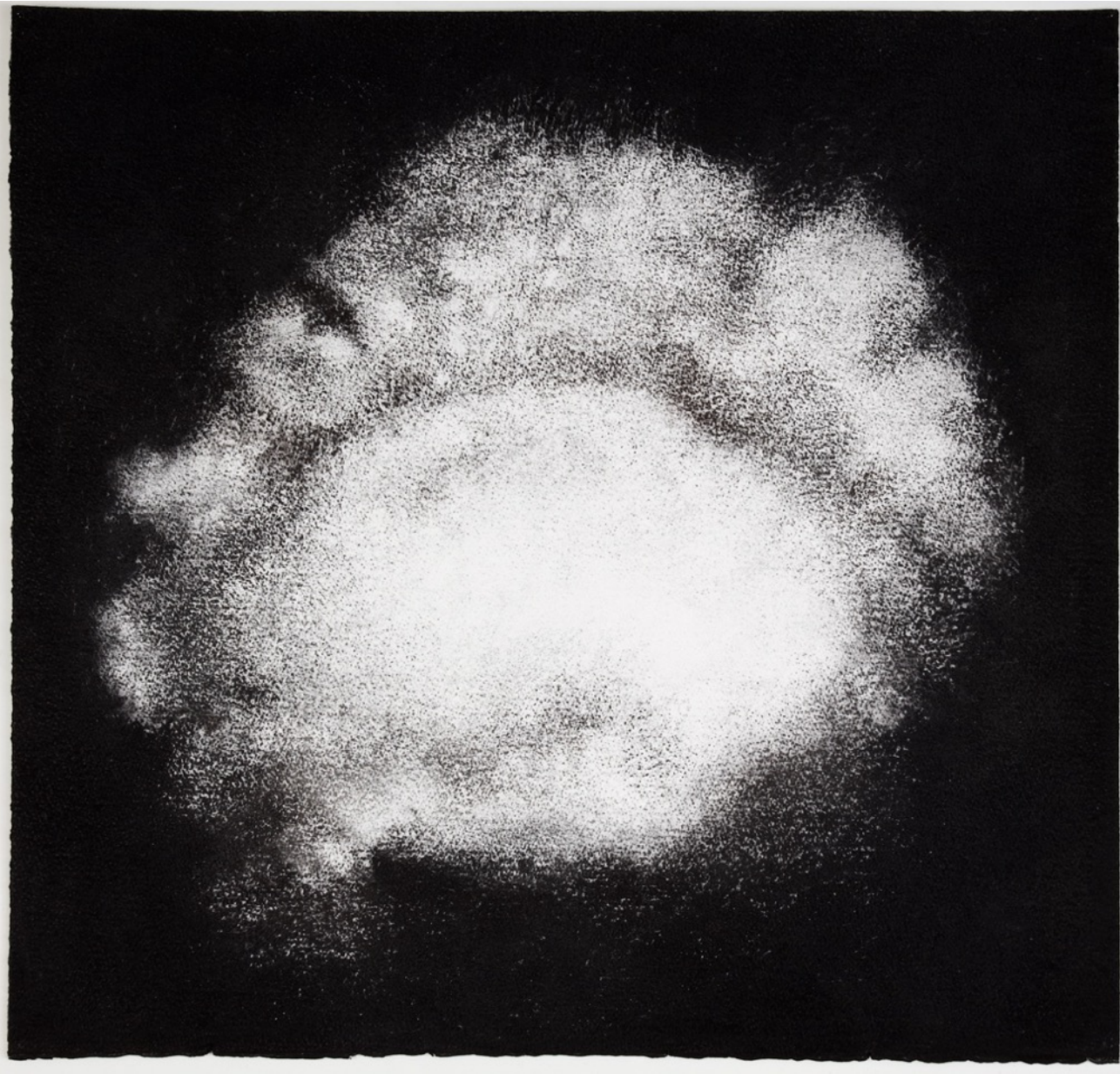
Sea Sponge #1

2012

Charcoal on Paper

57 x 60 cm

\$3,750



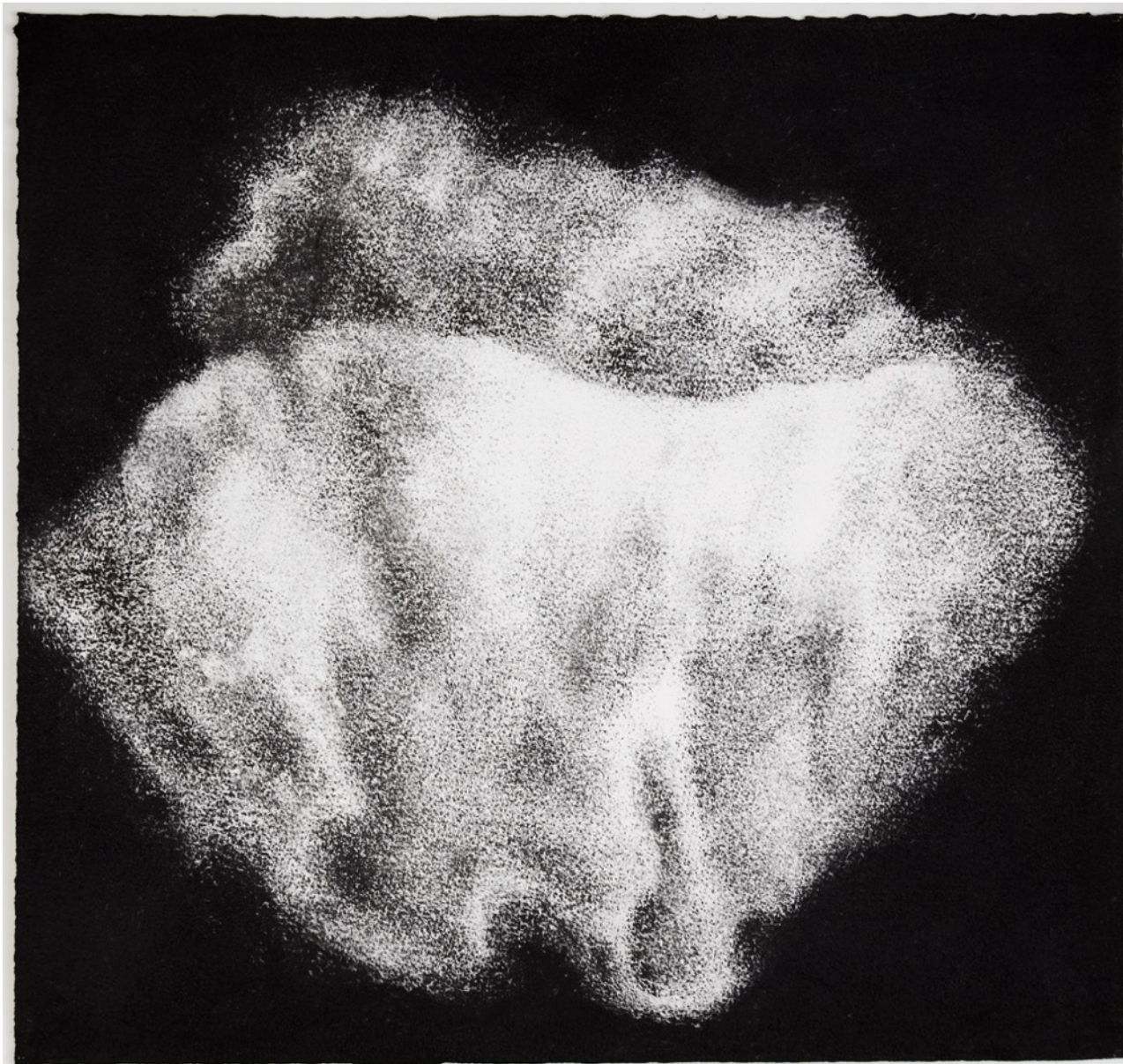
Sea Sponge #2

2012

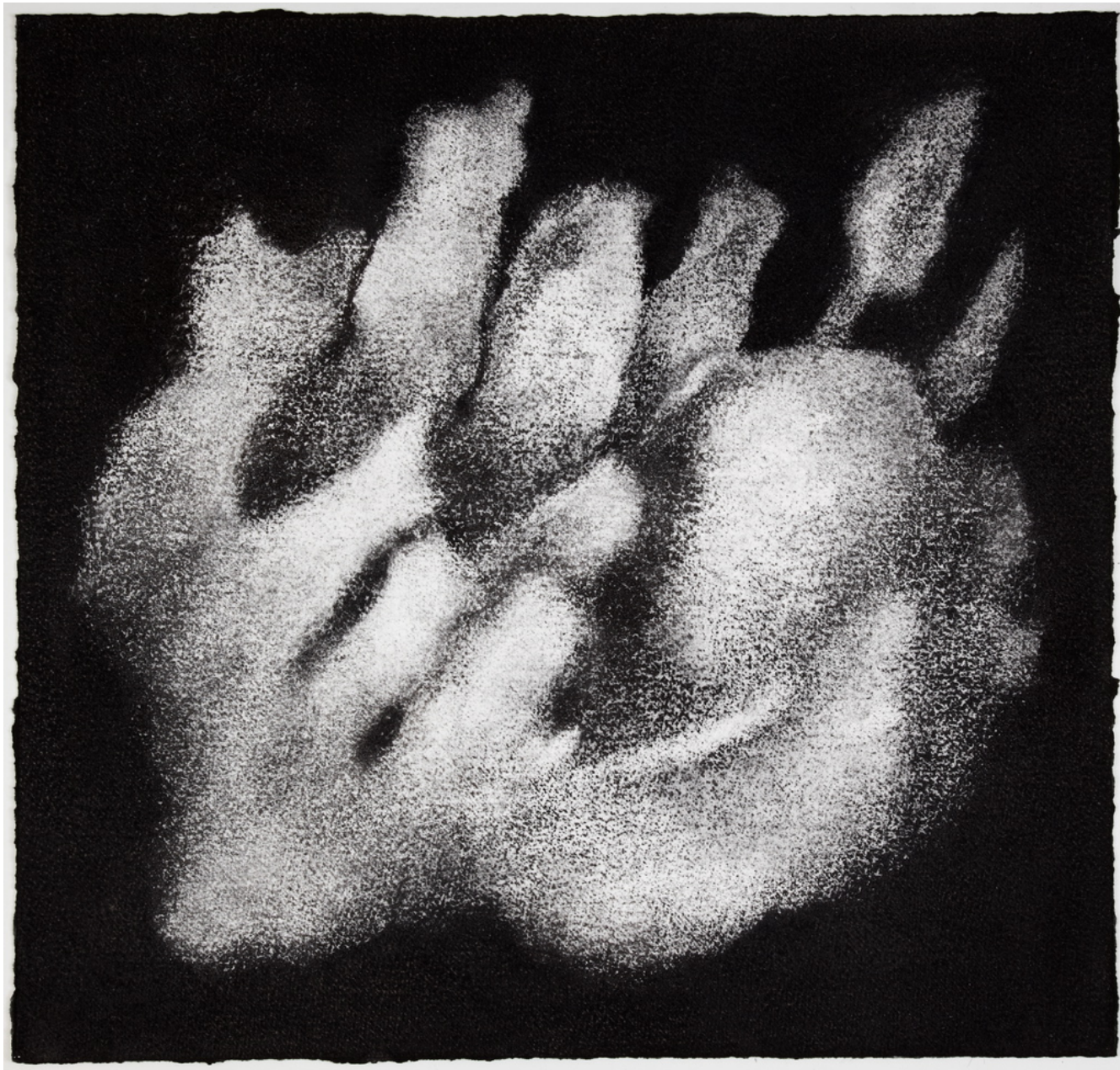
Charcoal on Paper

57 x 60 cm

\$3,750



Sea Sponge #5
2012
Charcoal on Paper
57 x 60 cm
\$3,750



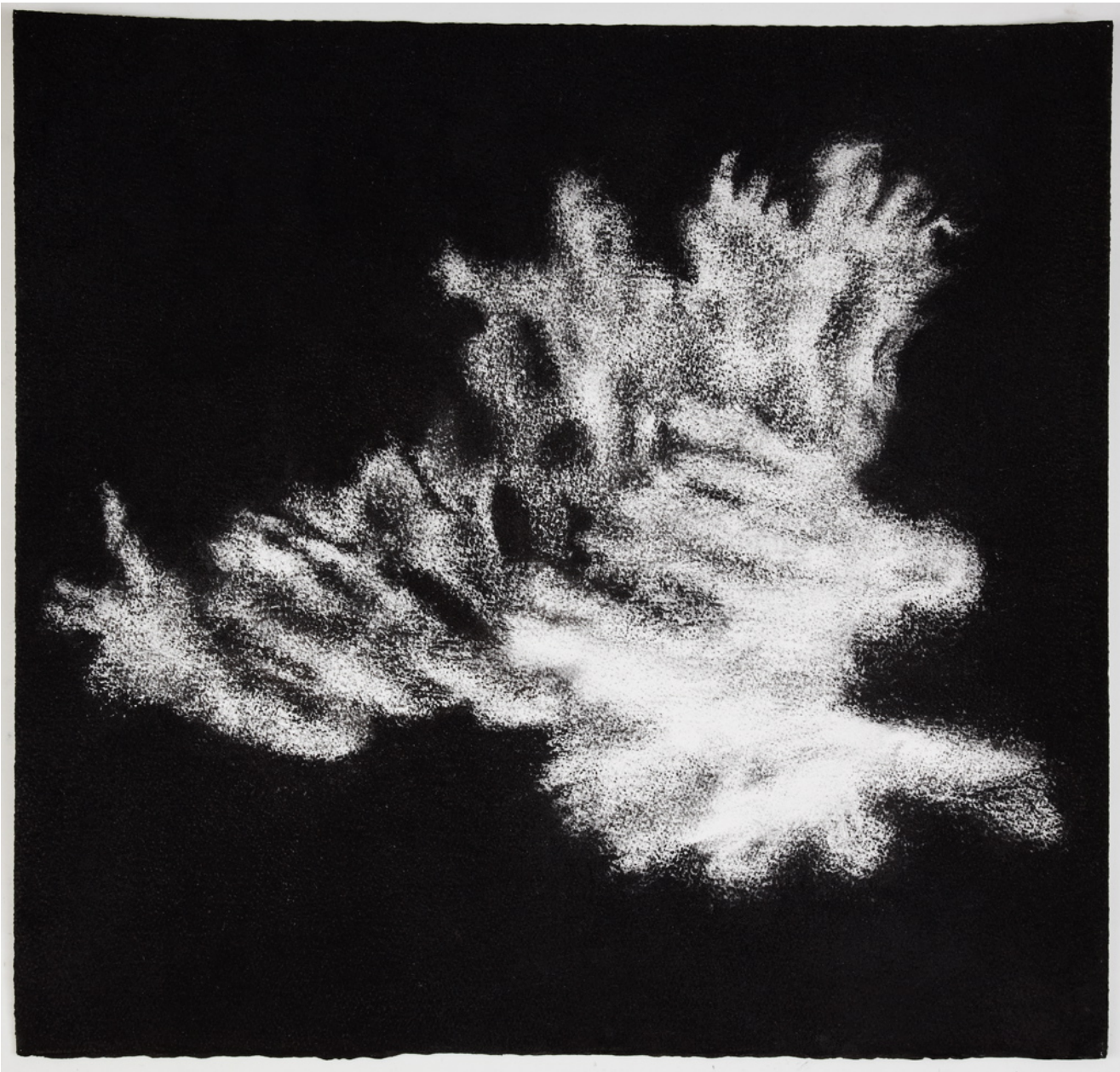
Sea Sponge #6

2012

Charcoal on Paper

57 x 60 cm

\$3,750



Sea Sponge #7

2012

Charcoal on Paper

57 x 60 cm

\$3,750



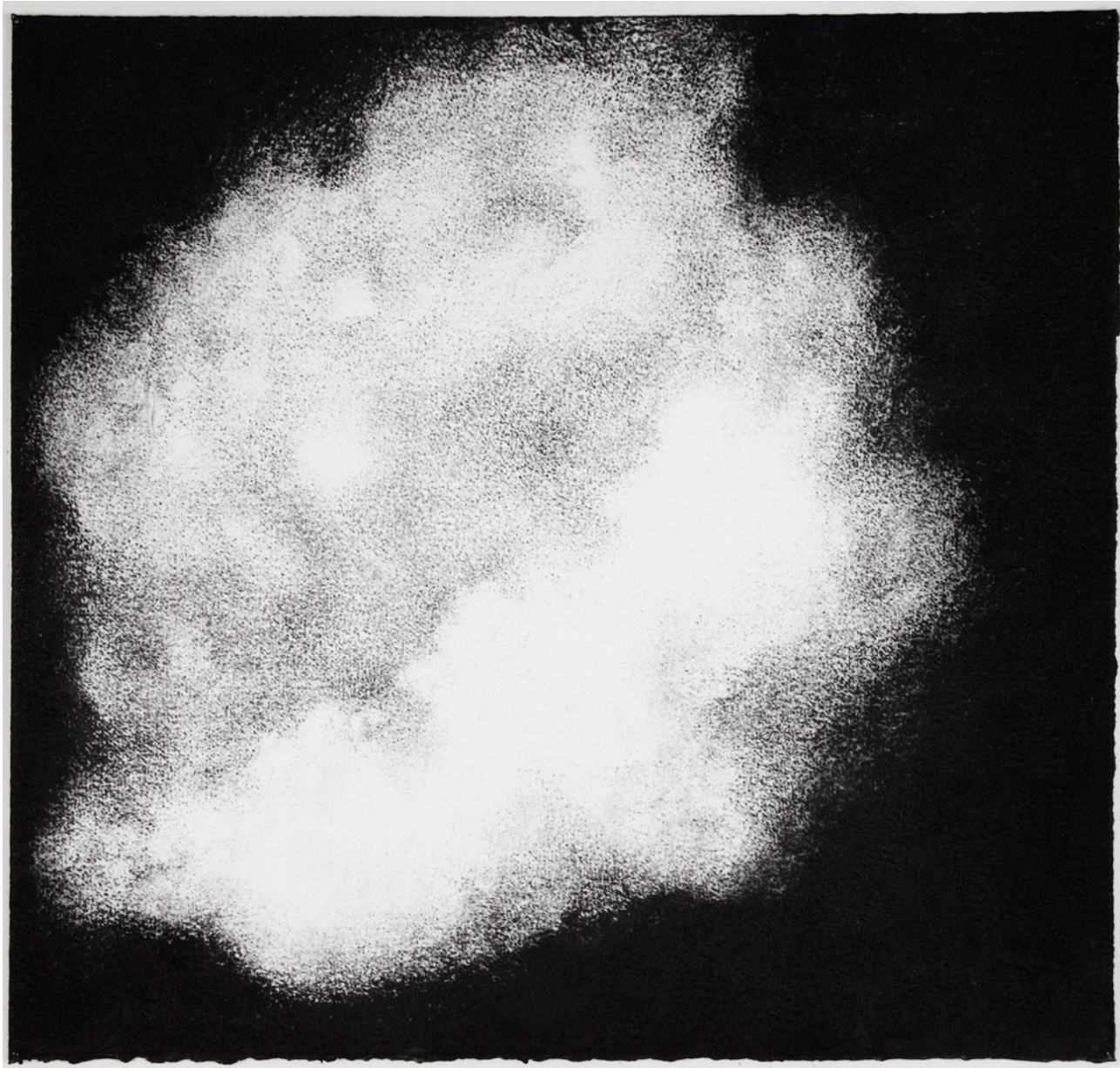
Sea Sponge #9

2012

Charcoal on Paper

57 x 60 cm

\$3,750



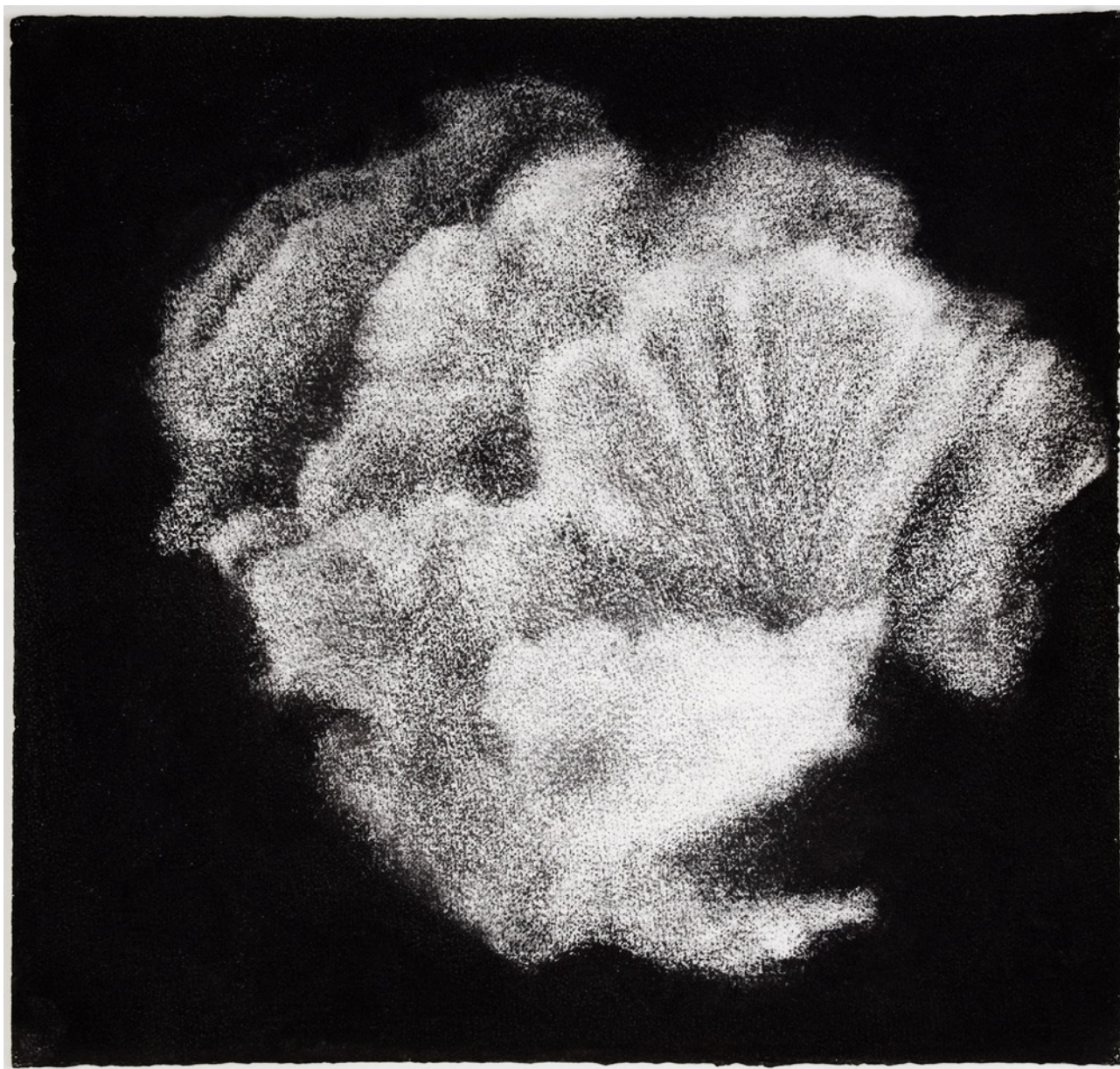
Sea Sponge #10

2012

Charcoal on Paper

57 x 60 cm

\$3,750



Sea Sponge #12

2012

Charcoal on Paper

57 x 60 cm

\$3,750