

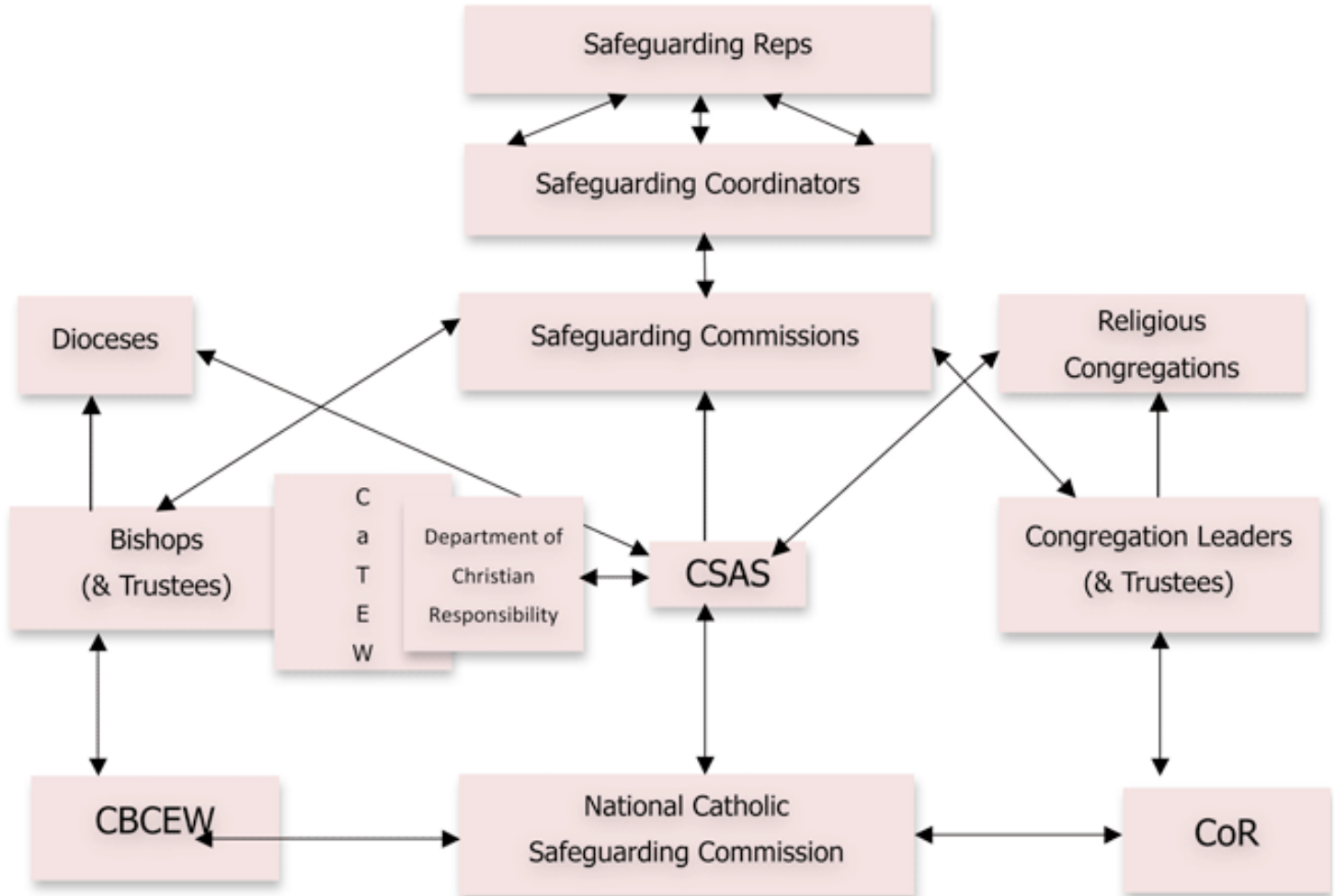


Alignment of Religious Orders

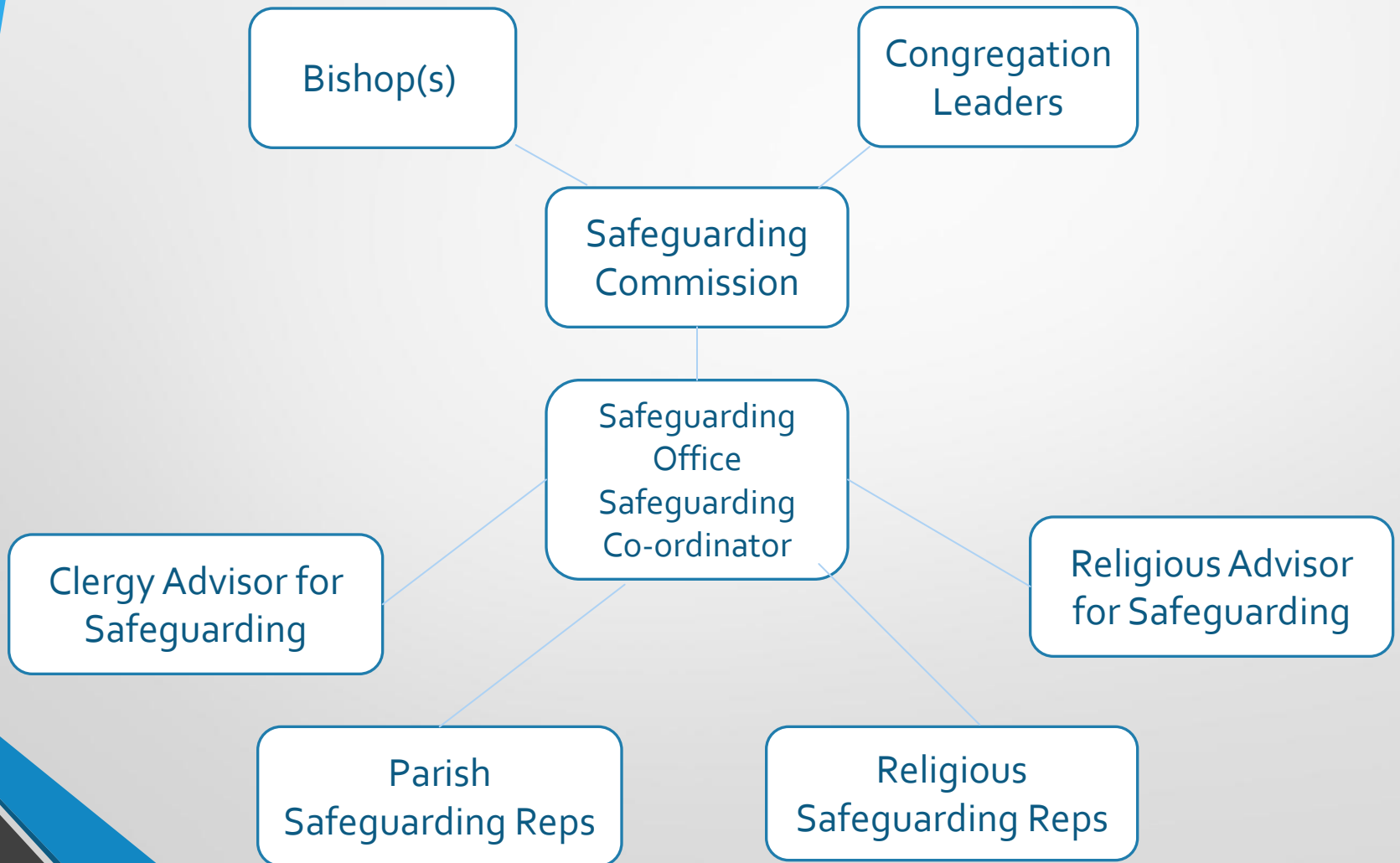
Presented by: Dawn Lundergan

Safeguarding Co-ordinator, Salford Catholic Safeguarding Commission

NATIONAL SAFEGUARDING STRUCTURE – DIAGRAM



Safeguarding Structure



Role of Religious with the Commission

- Championing safeguarding within the Religious Congregations.
- Promoting safeguarding with fellow Religious.
- Providing contextual advice to the Safeguarding Co-ordinator and to the Commission.
- Providing support to the Safeguarding Co-ordinator.
- Ensuring there is an adequate and balanced membership to include the necessary mix of skills and experience.
- Assisting with the work of safeguarding .

Engagement

- Name of Commission
- Initial Contact / Induction / Development Day
- Identifying Need & Strengths
- Understanding Individual Religious Order's Charisms
- Agreeing Arrangements (General & Specific)
- Representation on Safeguarding Commission
- Establishing Roles

What Worked Well

- Regular Contact with Religious Safeguarding Representatives (Sharing Good Practice)
- Episcopal Vicars for Religious
- Peer Mentoring / Links
- Establishing Relationships with Congregational Leaders
- Training / Conferences
- Links to Statutory Agencies (LSCBs / LSABs)
- Oversight & Monitoring of Casework
- Assisting Broader Safeguarding Initiatives (Support for Asylum Seekers & Refugees)

Challenges

- Language
- Understanding the Congregational Structures / Charisms
- Confusion re: Roles (including Diocesan Bishops Trustees)
- Confusion re: Congregation Leader / Safeguarding Representative
- Openness & Transparency
- 'Elected' Congregation Leaders
- Cross Boundary Working (Relationships & Responsibilities – Aligned & Non-Aligned)
- Multiple Jurisdictions
- Memorandum of Understanding / Safeguarding Office Capacity / Inconsistency
- Establishing Broader Forums to Share Practice

Moving Forward

- Greater Connections Geographically
- Greater Communication / Understanding (incl. Specific Training / Presentations)
- Greater Consistency in Practice
- Developing an Audit
- Greater Voice / Integration – “Natural”
- Greater Confidence (Safeguarding Representatives / Congregation Leaders / Trustees)

What Does This Mean For You?

- Clarifying Roles and Responsibilities (including Trustees and Diocesan Bishops)
- Communicating Charism / Structure / Ethos / Concerns
- Recognising Strengths
- Integrating Safeguarding as Central to Ministry
- Celebrating Safeguarding and what it brings to our Communities