



Schedule Tour

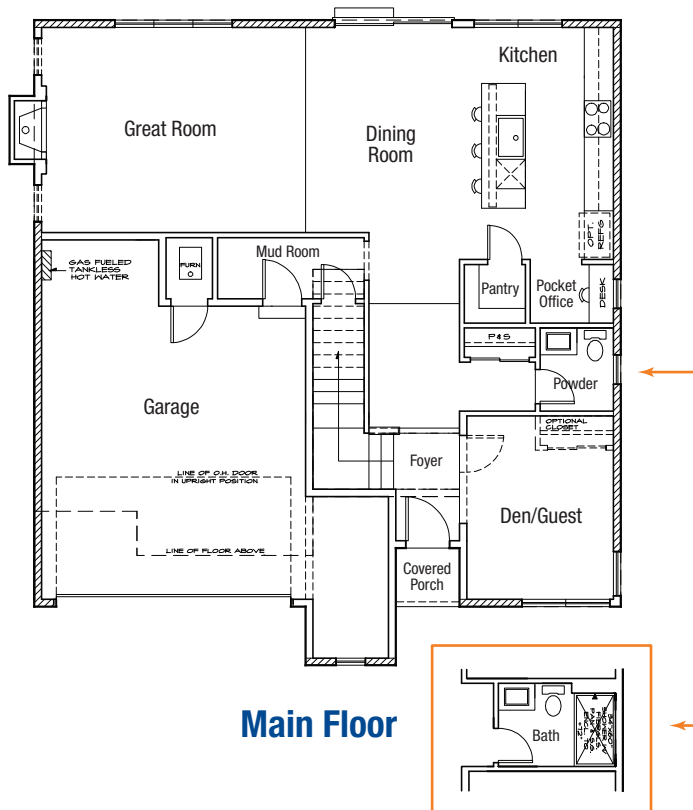
Gail Eshleman // Listing Broker

(425) 248-1545 // gceshleman@hotmail.com

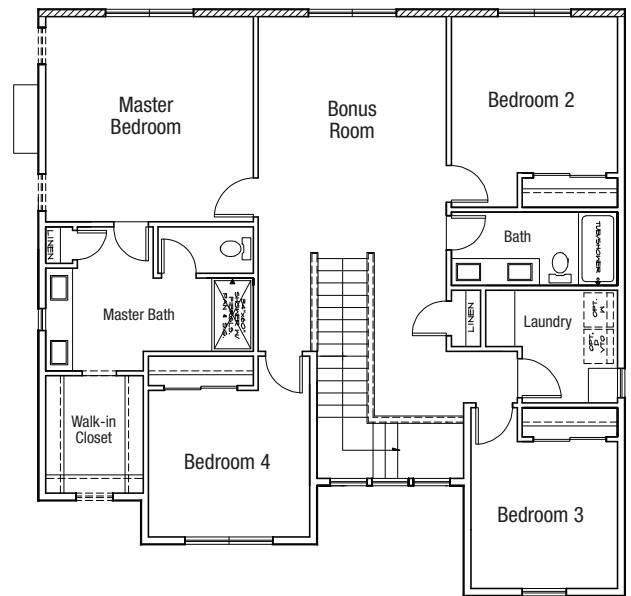
www.gamut360.com

Olympic Plan // 2,485 SF

- » 4 Bedroom
- » 2.5 Bath
- » 2-Car+ Garage
- » Open Floorplan
- » Master Suite
- » Main Floor Den/Guest Suite
- » Pocket Office
- » Upper Floor Laundry
- » Upper Floor Bonus Room
- » Lake Stevens Schools



Optional 3/4 Bath at Den/Guest



Home and community information, including: pricing, included features, terms, availability and amenities are subject to change and prior sale at any time without notice or obligation. Drawings, pictures, photographs, video, square footages, floor plans, elevations, features, colors and sizes are approximate for illustration purposes only and will vary from the homes as built. Images do not reflect a racial or ethnic preference. No representations or warranties are made that the view from the property will remain the same; future development, growth of landscaping and the like may impact any views currently experienced from the property.