



Prospech Limited
ABN 24 602 043 265

16 December 2020

The Manager Companies
ASX Limited
20 Bridge Street
Sydney NSW 2000

(9 pages by email)

Dear Madam

MINE SEQUENCE DRILL HOLE INTERSECTS HIGH GRADE GOLD AND SILVER

- High grade gold and silver intersection confirms the LANF structural target
- Drill hole BADD001 intersected 12.8 g/t Au and 380 g/t Ag from 89.1m to 90.1m downhole
- Individual assay grades up to 17.2 g/t Au and 494 g/t Ag
- Sulphide mineral association potentially amenable to flotation processing

The Directors of Prospech Limited ('Prospech' or 'the Company') (ASX: PRS) are pleased to announce the assay results from the first diamond drill hole on the Bauch prospect within the Company's flagship Hodrusa Hamre exploration licence.

Hole BADD001 was designed to test the extension of a major detachment fault (locally known as a low angle normal fault or LANF) onto the Company's Hodrusa Hamre exploration licence. Mineralisation at the nearby operating Rozalia underground gold mine is controlled by the LANF, the surface trace of which falls mainly on the Company's Hodrusa Hamre exploration licence.

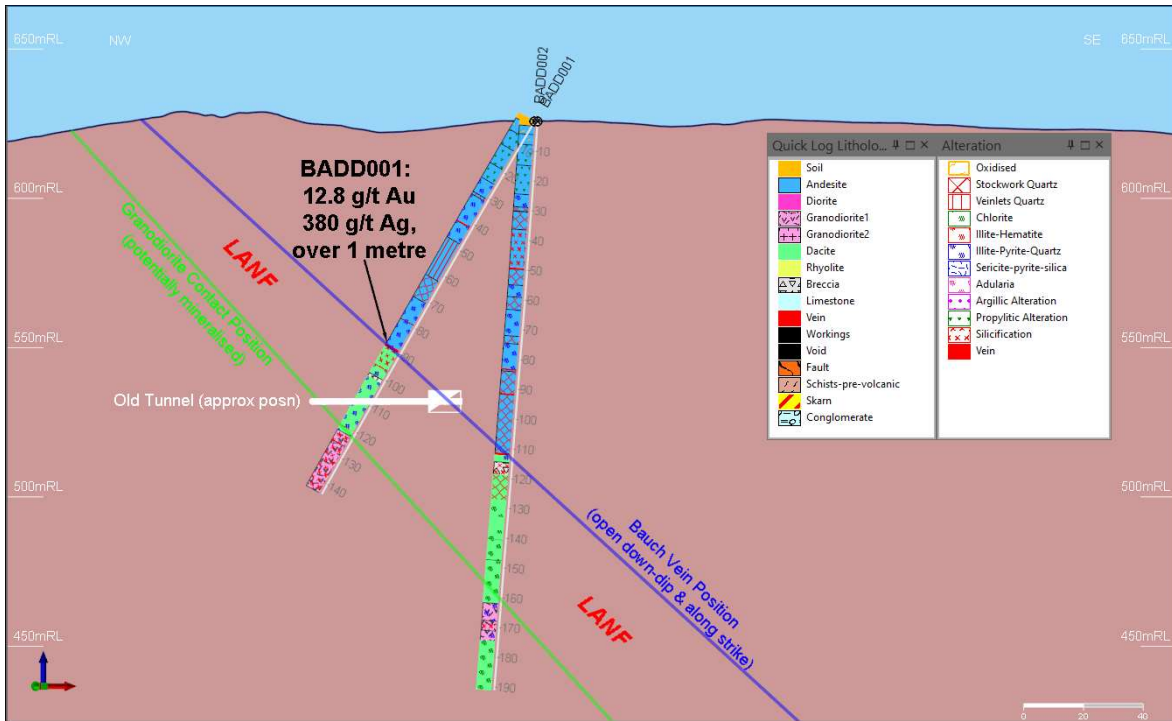
Hole BADD001 intersected high grade gold and silver mineralisation, precisely corresponding to the predicted position of the Bauch vein which was investigated in the past by historic tunnels and surface workings (see cross section below) and interpreted to be an extension of the LANF.

The details of the intersection, which is also rich in base metal sulphides, are as follows:

- **BADD001: 12.8 g/t Au and 380 g/t Ag (2.3% Pb, 1.4% Zn) from 89.1m to 90.1m**

The Bauch vein strikes north-east and dips at 45 degrees to the south-east, in the direction of the nearby Rozalia Mine (historic production ~1.2Mt @ 12 g/t Au, 14 g/t Ag).

Expectations are that not all of the LANF will exhibit high grade gold mineralisation, but the results from BADD001 indicate the existence of at least one, near surface, high grade shoot, which will be a focus for follow-up drilling in 2021.



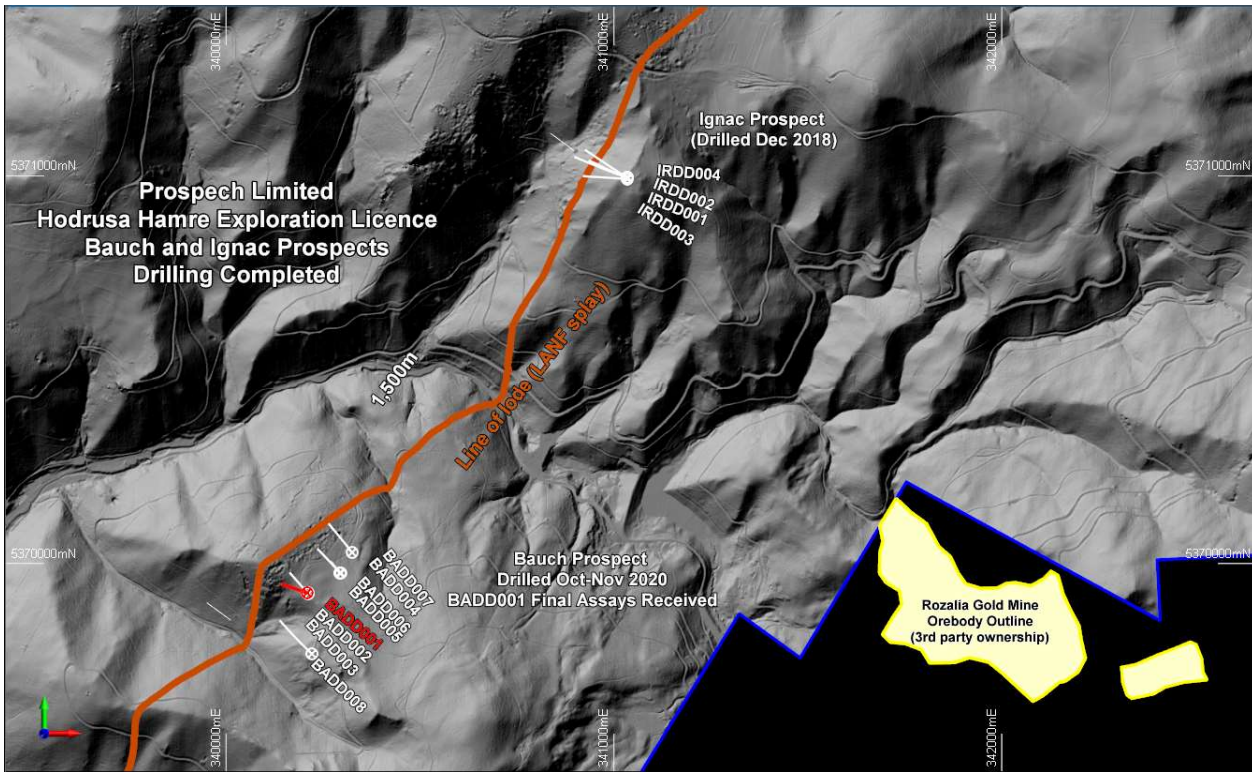
Cross section through the LANS structure showing assay results for BADD001. Mineralisation in the Bauch vein position is open up dip, down dip and along strike. The footwall granodiorite contact also has potential to host mineralised shoots.



Drill core from BADD001.

In detail, the recent drilling has shown that the Bauch vein structure occurs on the contact between two volcanic rock types; a hanging wall andesite and a footwall dacite. Both units are strongly altered and show multiple zones of brecciation and quartz stockwork veining.

The assays from BADD001 are consistent with results from rock chip sampling of the exposed lode in one of the shallow historical tunnels, which returned high grade gold and silver values (28.3 g/t Au and 582 g/t Ag). A nearby in-situ pillar sample also assayed 11.4 g/t Au and 565 g/t Ag.



Locations of the Bauch prospect drilling relative to the nearby operating Rozalia Mine and along the line of lode to the Company's successful Ignac prospect drilling in 2018.

This announcement has been approved by the Managing Director, Jason Beckton.

For further information, please contact:

Jason Beckton
 Managing Director
 Prospech Limited
 +61 (0)438 888 612

Competent Person's Statement

The information in this Report that relates to Exploration Results, Exploration Targets and Mineral Resources is based on information compiled by Mr Jason Beckton, who is a Member of the Australian Institute of Geoscientists. Mr Beckton, who is Managing Director of the Company, has sufficient experience which is relevant to the style of mineralisation and type of deposit under consideration and to the activity which he is undertaking to qualify as a Competent Person as defined in the 2012 edition of the 'Australasian Code for Reporting of Exploration Results, Mineral Resources and Ore Reserves'. Mr Beckton consents to the inclusion in this Report of the matters based on the information in the form and context in which it appears.

pjn10624

Section 1 Sampling Techniques and Data

Criteria	JORC Code explanation	Commentary
Sampling techniques	<ul style="list-style-type: none"> Nature and quality of sampling (eg cut channels, random chips, or specific specialised industry standard measurement tools appropriate to the minerals under investigation, such as down hole gamma sondes, or handheld XRF instruments, etc). These examples should not be taken as limiting the broad meaning of sampling. Include reference to measures taken to ensure sample representivity and the appropriate calibration of any measurement tools or systems used. Aspects of the determination of mineralisation that are Material to the Public Report. In cases where 'industry standard' work has been done this would be relatively simple (eg 'reverse circulation drilling was used to obtain 1 m samples from which 3 kg was pulverised to produce a 30 g charge for fire assay'). In other cases more explanation may be required, such as where there is coarse gold that has inherent sampling problems. Unusual commodities or mineralisation types (eg submarine nodules) may warrant disclosure of detailed information. 	<ul style="list-style-type: none"> Rock chip grab samples were collected from outcrops, spoil heaps and accessible surface and underground workings of quartz veins, and zones of silicification, within Neogene volcanics under the supervision of a qualified geologist. Sample locations were surveyed with a handheld GPS and marked into sample books.
Drilling techniques	<ul style="list-style-type: none"> Drill type (eg core, reverse circulation, open-hole hammer, rotary air blast, auger, Bangka, sonic, etc) and details (eg core diameter, triple or standard tube, depth of diamond tails, face-sampling bit or other type, whether core is oriented and if so, by what method, etc). 	<ul style="list-style-type: none"> Diamond drilling HQ3 size triple tube.
Drill sample recovery	<ul style="list-style-type: none"> Method of recording and assessing core and chip sample recoveries and results assessed. Measures taken to maximise sample recovery and ensure representative nature of the samples. Whether a relationship exists between sample recovery and grade and whether sample bias may have occurred due to preferential loss/gain of fine/coarse material. 	<ul style="list-style-type: none"> Core is measure in the triple tube split before laying in the core boxes to ensure minimum disturbance and most accurate calculation of core recoveries. Overall core recoveries have been very high at 98%. Any relationship between core recovery and grade cannot be determined at this time, but due to the high core recovery, bias is considered very unlikely.
Logging	<ul style="list-style-type: none"> Whether core and chip samples have been geologically and geotechnically logged to a level of detail to support appropriate Mineral Resource estimation, mining studies and metallurgical studies. Whether logging is qualitative or quantitative in nature. Core (or costean, channel, etc) photography. The total length and percentage of the relevant intersections logged. 	<ul style="list-style-type: none"> The complete core is logged in detail by qualified geologists. Core is photographed wet and dry. All core is oriented. Detail structural measurements are collected. Core logging is a combination of qualitative and quantitative information.
Sub-sampling techniques and sample preparation	<ul style="list-style-type: none"> If core, whether cut or sawn and whether quarter, half or all core taken. If non-core, whether riffled, tube sampled, rotary split, etc and whether sampled wet or dry. For all sample types, the nature, quality and appropriateness of the sample preparation technique. Quality control procedures adopted for all sub-sampling stages to maximise representivity of samples. Measures taken to ensure that the sampling is representative of the in situ material collected, including for instance results for field duplicate/second-half sampling. Whether sample sizes are appropriate to the grain size of the material being sampled. 	<ul style="list-style-type: none"> Approximately 1 to 2 Kg of material from each rock chip was sent to the laboratory for analysis. All sampling done under supervision of a qualified geologist. Core is manually split in to 2 equal halves using a diamond saw. The core is split along the core orientation reference line, where available. Half-core is considered to be a high-quality and very representative method of sample. Sample lengths are nominally 1 metre but vary to honour geological contacts.
Quality of assay data and laboratory tests	<ul style="list-style-type: none"> The nature, quality and appropriateness of the assaying and laboratory procedures used and whether the technique is considered partial or total. For geophysical tools, spectrometers, handheld XRF instruments, etc, the parameters used in determining the analysis including instrument make and model, reading times, calibrations 	<ul style="list-style-type: none"> Samples are stored in a secure location in Companies storage facilities and transported to the ALS laboratory in Romania for sample preparation of fine crush, riffle split and pulverizing of 1kg to 85% < 75µm. Pulps are analyzed by ALS Romania using method code ME-ICP61, a 33 element determination using a four acid digestion and 30 gram charge fire assay with AA finish (Au-AA25) for gold. Ore grades are analysed

Criteria	JORC Code explanation	Commentary
	<p><i>factors applied and their derivation, etc.</i></p> <ul style="list-style-type: none"> <i>Nature of quality control procedures adopted (eg standards, blanks, duplicates, external laboratory checks) and whether acceptable levels of accuracy (ie lack of bias) and precision have been established.</i> 	<p>by OG62 – 4 acid digestion method for each element when identified.</p>
Verification of sampling and assaying	<ul style="list-style-type: none"> <i>The verification of significant intersections by either independent or alternative company personnel.</i> <i>The use of twinned holes.</i> <i>Documentation of primary data, data entry procedures, data verification, data storage (physical and electronic) protocols.</i> <i>Discuss any adjustment to assay data.</i> 	<ul style="list-style-type: none"> Laboratory provides assay certificates, which are stored electronically both in ALS and Company's servers. Laboratory CSV files are merged with GPS Location data files using unique sample numbers as the key. No adjustments made to assay data.
Location of data points	<ul style="list-style-type: none"> <i>Accuracy and quality of surveys used to locate drill holes (collar and down-hole surveys), trenches, mine workings and other locations used in Mineral Resource estimation.</i> <i>Specification of the grid system used.</i> <i>Quality and adequacy of topographic control.</i> 	<ul style="list-style-type: none"> Rock chip samples are located using handheld GPS receivers with accuracy from 10-5m. UTM projection WGS84 Zone 34N and local grid SJTSK03. Conversion between local and UTM grid is run through national certified webportal. The topographic control, using handheld GPS, was adequate for the survey. Drill collars are surveyed using a differential GPS or by triangulation depending of the tree cover and other environmental factors. Downhole surveys are taken at nominal 50m intervals down the hole. Excessive deviation is not generally a problem in this field and this interval is considered sufficient. Downhole azimuth readings at magnetic and converted to Grid by adding 6.6 degrees.
Data spacing and distribution	<ul style="list-style-type: none"> <i>Data spacing for reporting of Exploration Results.</i> <i>Whether the data spacing and distribution is sufficient to establish the degree of geological and grade continuity appropriate for the Mineral Resource and Ore Reserve estimation procedure(s) and classifications applied.</i> <i>Whether sample compositing has been applied.</i> 	<ul style="list-style-type: none"> It is not yet determined whether the results from this drilling will be used in a mineral resource estimate.
Orientation of data in relation to geological structure	<ul style="list-style-type: none"> <i>Whether the orientation of sampling achieves unbiased sampling of possible structures and the extent to which this is known, considering the deposit type.</i> <i>If the relationship between the drilling orientation and the orientation of key mineralised structures is considered to have introduced a sampling bias, this should be assessed and reported if material.</i> 	<ul style="list-style-type: none"> No bias is believed to be introduced by the sampling method. Drilling is designed to intersect the target structure as close to normal as is possible given the constraints of topography and access. In this program no holes were drilled at acute angles to the target structure.
Sample security	<ul style="list-style-type: none"> <i>The measures taken to ensure sample security.</i> 	<ul style="list-style-type: none"> Samples were delivered to ALS Minerals laboratory in Romania by Prospech trusted contractor and were not left unattended at any time. There were no incident reports from ALS lab on sample receiver cell.
Audits or reviews	<ul style="list-style-type: none"> <i>The results of any audits or reviews of sampling techniques and data.</i> 	<ul style="list-style-type: none"> No audits or reviews of the data management system have been carried out.

Section 2 Reporting of Exploration Results

Criteria	JORC Code explanation	Commentary
Mineral tenement and land tenure status	<ul style="list-style-type: none"> <i>Type, reference name/number, location and ownership including agreements or material issues with third parties such as joint ventures, partnerships, overriding royalties, native title interests, historical sites, wilderness or national park and environmental settings.</i> <i>The security of the tenure held at the time of reporting along with any known impediments to obtaining a license to operate in the area.</i> 	<ul style="list-style-type: none"> Prospech Limited, through subsidiaries and contractual rights, holds 100% rights on the Hodrusa-Hamre - Banska Stiavnica, Nova Bana, Rudno, Pukanec and Jasenie tenements. The laws of Slovakia relating to exploration and mining have various requirements. As the exploration advances specific filings and environmental or other studies may be required. There are ongoing requirements under Slovakian mining laws that will be required at each stage of advancement. Those filings and studies are maintained and updated as required by Prospech's environmental and permit advisors specifically engaged for such purposes. The Company is the manager of operations in accordance with generally accepted mining industry standards and practices.
Exploration done	<ul style="list-style-type: none"> <i>Acknowledgment and appraisal of exploration by other parties.</i> 	<ul style="list-style-type: none"> Anciently, the target was silver, the currency of the day, and more recently, during the Communist era, the

Criteria	JORC Code explanation	Commentary																																																						
by other parties		<p>targets were industrial base metals, copper, lead, zinc and others. As a result, much of the country, including the Company's exploration license areas, has not been subject to modern western exploration methodology or exploitation.</p> <ul style="list-style-type: none"> Slovakia has a known mining history dating to Celtic times and earlier. Tools used by prehistoric miners at Spania Dolina, near Banska Bystrica are dated as early as 2000-1700 BC. Major production of metals (primarily copper and silver) occurred during the medieval period. The second oldest mining institute in the world is located at Banska Stiavnica and the local population is proud of their mining heritage, holding a three day mining festival every year. The mint at nearby Kremnica has operated for over six hundred years and continues to operate today. Communist era base metal and coal production was substantial and smelting of aluminium and nickel (material imported from Hungary and Albania) was carried out. Coal, gold, silver, talc, anhydrite and magnesite (and limestone, dolomite and gravel), bentonite, zeolite and industrial minerals are being mined in Slovakia today. An underground gold mine on a third party mining lease enclosed within the HHBS exploration license, the Rozalia Mine, continues in operation today, trucking a gravity/flotation concentrate to a smelter in Belgium. Communist era gold assays used in Government and private exploration programs have been proven to be unreliable and this must be taken into account when interpreting reports from the Communist era. Prospect holds 100% of two exploration licences covering approximately 115 square kilometres in the Hodrusa-Hamre/Banska Stiavnica mining district and the nearby Nova Bana goldfield where more than 1,000 years of historical production is estimated to have totalled 2.4 million ounces of gold, 120 million ounces of silver, 70,000 tonnes of zinc, 55,000 tonnes of lead and 8,000 tonnes of copper. The Hodrusa-Hamre/Banska Stiavnica mining district and the Nova Bana goldfield are located approximately 180 kilometres east of Bratislava in Slovakia, a country member of the European Union and Eurozone. 																																																						
Geology	<ul style="list-style-type: none"> Deposit type, geological setting and style of mineralisation. 	<ul style="list-style-type: none"> Located on the western flanks of the Stiavnica Strato Volcano within the Central Slovakian Volcanic Belt, the Nova Bana Exploration Licence covers quartz veins with classically banded, low-sulphidation epithermal textures with sulphidic "ginguro" zones, which are commonly associated with high grades of precious metals. Native gold and silver-sulphide minerals were observed in the hand specimens. 																																																						
Drill hole Information	<ul style="list-style-type: none"> A summary of all information material to the understanding of the exploration results including a tabulation of the following information for all Material drill holes: <ul style="list-style-type: none"> easting and northing of the drill hole collar elevation or RL (Reduced Level – elevation above sea level in metres) of the drill hole collar dip and azimuth of the hole down hole length and interception depth hole length. If the exclusion of this information is justified on the basis that the information is not Material and this exclusion does not detract from the understanding of the report, the Competent Person should clearly explain why this is the case. 	<table border="1"> <thead> <tr> <th>Hole_ID</th> <th>UTM_Grid_ID</th> <th>UTM_East</th> <th>UTM_North</th> <th>RL</th> <th>Max_Depth</th> </tr> </thead> <tbody> <tr> <td>BADD001</td> <td>WGS 84 Zone 34N</td> <td>340,210.03</td> <td>5,369,923.62</td> <td>625.70</td> <td>143.7</td> </tr> <tr> <td>BADD002</td> <td>WGS 84 Zone 34N</td> <td>340,210.99</td> <td>5,369,923.16</td> <td>625.74</td> <td>191.1</td> </tr> <tr> <td>BADD003</td> <td>WGS 84 Zone 34N</td> <td>340,210.68</td> <td>5,369,924.12</td> <td>625.72</td> <td>137.6</td> </tr> <tr> <td>BADD004</td> <td>WGS 84 Zone 34N</td> <td>340,294.43</td> <td>5,369,975.63</td> <td>607.50</td> <td>78.9</td> </tr> <tr> <td>BADD005</td> <td>WGS 84 Zone 34N</td> <td>340,294.99</td> <td>5,369,975.16</td> <td>607.57</td> <td>179.8</td> </tr> <tr> <td>BADD006</td> <td>WGS 84 Zone 34N</td> <td>340,293.78</td> <td>5,369,976.17</td> <td>607.41</td> <td>182.7</td> </tr> <tr> <td>BADD007</td> <td>WGS 84 Zone 34N</td> <td>340,324.14</td> <td>5,370,028.58</td> <td>597.57</td> <td>200.4</td> </tr> <tr> <td>BADD008</td> <td>WGS 84 Zone 34N</td> <td>340,221.23</td> <td>5,369,767.53</td> <td>625.86</td> <td>239.5</td> </tr> </tbody> </table>	Hole_ID	UTM_Grid_ID	UTM_East	UTM_North	RL	Max_Depth	BADD001	WGS 84 Zone 34N	340,210.03	5,369,923.62	625.70	143.7	BADD002	WGS 84 Zone 34N	340,210.99	5,369,923.16	625.74	191.1	BADD003	WGS 84 Zone 34N	340,210.68	5,369,924.12	625.72	137.6	BADD004	WGS 84 Zone 34N	340,294.43	5,369,975.63	607.50	78.9	BADD005	WGS 84 Zone 34N	340,294.99	5,369,975.16	607.57	179.8	BADD006	WGS 84 Zone 34N	340,293.78	5,369,976.17	607.41	182.7	BADD007	WGS 84 Zone 34N	340,324.14	5,370,028.58	597.57	200.4	BADD008	WGS 84 Zone 34N	340,221.23	5,369,767.53	625.86	239.5
Hole_ID	UTM_Grid_ID	UTM_East	UTM_North	RL	Max_Depth																																																			
BADD001	WGS 84 Zone 34N	340,210.03	5,369,923.62	625.70	143.7																																																			
BADD002	WGS 84 Zone 34N	340,210.99	5,369,923.16	625.74	191.1																																																			
BADD003	WGS 84 Zone 34N	340,210.68	5,369,924.12	625.72	137.6																																																			
BADD004	WGS 84 Zone 34N	340,294.43	5,369,975.63	607.50	78.9																																																			
BADD005	WGS 84 Zone 34N	340,294.99	5,369,975.16	607.57	179.8																																																			
BADD006	WGS 84 Zone 34N	340,293.78	5,369,976.17	607.41	182.7																																																			
BADD007	WGS 84 Zone 34N	340,324.14	5,370,028.58	597.57	200.4																																																			
BADD008	WGS 84 Zone 34N	340,221.23	5,369,767.53	625.86	239.5																																																			

Hole_ID	Depth	Dip	MAG_Azimuth	UTM_Azimuth	Tool
BADD001	0.00	-60.00	283.00	289.60	Compass
BADD001	15.00	-59.49	284.95	291.55	Nomad
BADD001	50.00	-60.26	282.94	289.54	Nomad
BADD001	100.00	-60.39	281.91	288.51	Nomad
BADD001	142.00	-60.92	280.14	286.74	Nomad
BADD002	0.00	-85.95	286.30	292.90	Nomad
BADD002	15.00	-85.95	286.30	292.90	Nomad
BADD002	22.00	-85.60	292.67	299.27	Nomad
BADD002	34.00	-86.01	293.61	300.21	Nomad
BADD002	46.00	-86.02	293.15	299.75	Nomad
BADD002	50.00	-85.95	294.20	300.80	Nomad
BADD002	53.00	-86.01	293.80	300.40	Nomad
BADD002	58.00	-85.60	290.39	296.99	Nomad
BADD002	70.00	-85.37	291.68	298.28	Nomad
BADD002	82.00	-85.38	290.97	297.57	Nomad
BADD002	94.00	-85.37	299.08	305.68	Nomad
BADD002	100.00	-85.43	295.18	301.78	Nomad
BADD002	106.00	-85.51	297.57	304.17	Nomad
BADD002	118.00	-85.32	300.55	307.15	Nomad
BADD002	130.00	-85.05	300.67	307.27	Nomad
BADD002	142.00	-85.12	296.42	303.02	Nomad
BADD002	150.00	-85.35	301.43	308.03	Nomad
BADD002	154.00	-85.43	297.11	303.71	Nomad
BADD002	166.00	-85.45	303.63	310.23	Nomad
BADD002	178.00	-85.19	298.82	305.42	Nomad
BADD002	190.00	-85.36	301.21	307.81	Nomad
BADD003	0.00	-60.00	311.00	317.60	Compass
BADD003	12.00	-60.21	311.72	318.32	Nomad
BADD003	18.00	-60.21	311.70	318.30	Nomad
BADD003	29.00	-60.50	311.16	317.76	Nomad
BADD003	41.00	-60.04	311.28	317.88	Nomad
BADD003	50.00	-59.70	311.90	318.50	Nomad
BADD003	53.00	-60.04	312.28	318.88	Nomad
BADD003	65.00	-59.72	311.52	318.12	Nomad
BADD003	77.00	-59.17	311.85	318.45	Nomad
BADD003	89.00	-58.98	311.60	318.20	Nomad
BADD003	100.00	-58.38	312.26	318.86	Nomad
BADD003	101.00	-58.63	311.59	318.19	Nomad
BADD003	113.00	-58.21	312.26	318.86	Nomad
BADD003	125.00	-57.99	312.31	318.91	Nomad
BADD003	137.00	-57.69	312.31	318.91	Nomad

Hole_ID	Depth	Dip	MAG_Azimuth	UTM_Azimuth	Tool
BADD004	0.00	-60.00	312.88	319.48	Nomad
BADD004	30.00	-61.06	312.88	319.48	Nomad
BADD004	50.00	-60.61	314.40	321.00	Nomad
BADD005	0.00	-86.00	320.00	326.60	Nomad
BADD005	15.00	-86.10	320.89	327.49	Nomad
BADD005	35.00	-85.84	320.75	327.35	Nomad
BADD005	47.00	-85.43	321.22	327.82	Nomad
BADD005	50.00	-85.60	323.26	329.86	Nomad
BADD005	59.00	-85.58	322.70	329.30	Nomad
BADD005	71.00	-85.49	321.73	328.33	Nomad
BADD005	83.00	-85.58	318.95	325.55	Nomad
BADD005	95.00	-85.70	324.03	330.63	Nomad
BADD005	100.00	-85.88	323.68	330.28	Nomad
BADD005	107.00	-85.37	323.93	330.53	Nomad
BADD005	119.00	-85.74	320.90	327.50	Nomad
BADD005	131.00	-85.36	323.77	330.37	Nomad
BADD005	143.00	-85.34	323.70	330.30	Nomad
BADD005	150.00	-85.67	326.10	332.70	Nomad
BADD005	155.00	-85.33	324.78	331.38	Nomad
BADD005	167.00	-85.43	326.90	333.50	Nomad
BADD005	179.00	-85.25	324.54	331.14	Nomad
BADD006	0.00	-61.31	310.67	317.27	Nomad
BADD006	15.00	-61.31	310.67	317.27	Nomad
BADD006	50.00	-61.73	310.77	317.37	Nomad
BADD006	100.00	-62.60	309.82	316.42	Nomad
BADD006	150.00	-62.85	309.81	316.41	Nomad
BADD006	180.00	-63.18	309.12	315.72	Nomad
BADD007	0.00	-61.02	317.26	323.86	Nomad
BADD007	23.00	-61.02	317.26	323.86	Nomad
BADD007	50.00	-61.71	313.95	320.55	Nomad
BADD007	100.00	-61.59	313.74	320.34	Nomad
BADD007	150.00	-62.23	313.89	320.49	Nomad
BADD007	200.00	-61.69	314.84	321.44	Nomad
BADD008	0.00	-60.77	307.65	314.25	Nomad
BADD008	18.00	-60.77	307.65	314.25	Nomad
BADD008	50.00	-60.18	307.76	314.36	Devishot
BADD008	100.00	-60.24	308.80	315.40	Devishot
BADD008	150.00	-59.47	310.80	317.40	Devishot
BADD008	200.00	-59.18	311.48	318.08	Devishot

Criteria	JORC Code explanation	Commentary																														
Data aggregation methods	<ul style="list-style-type: none"> In reporting Exploration Results, weighting averaging techniques, maximum and/or minimum grade truncations (eg cutting of high grades) and cut-off grades are usually Material and should be stated. Where aggregate intercepts incorporate short lengths of high grade results and longer lengths of low grade results, the procedure used for such aggregation should be stated and some typical examples of such aggregations should be shown in detail. The assumptions used for any reporting of metal equivalent values should be clearly stated. 	<ul style="list-style-type: none"> No weighted averages reported as equal length intervals of 0.5m sampled and results have been reported with aggregated intercepts. 																														
Relationship between mineralisation widths and intercept lengths	<ul style="list-style-type: none"> These relationships are particularly important in the reporting of Exploration Results. If the geometry of the mineralisation with respect to the drill hole angle is known, its nature should be reported. If it is not known and only the down hole lengths are reported, there should be a clear statement to this effect (eg 'down hole length, true width not known'). 	<ul style="list-style-type: none"> BADD001 intersected 1m at 12.8 g/t Au and 380 g/t Ag from 89.1m downhole with true width >98% of the drilled width. Drilling designed to intercept target at orthogonal angle to report nominal true width. Individual assay results for the reported intercepts area as follows: <table border="1"> <thead> <tr> <th>Hole ID</th> <th>Sample ID</th> <th>From m</th> <th>To m</th> <th>Interval m</th> <th>Au g/t</th> <th>Ag g/t</th> <th>Cu %</th> <th>Pb %</th> <th>Zn %</th> </tr> </thead> <tbody> <tr> <td>BADD001</td> <td>M662913</td> <td>89.1</td> <td>89.6</td> <td>0.5</td> <td>17.2</td> <td>494</td> <td>0.14</td> <td>2.17</td> <td>1.15</td> </tr> <tr> <td>BADD001</td> <td>M662914</td> <td>89.6</td> <td>90.1</td> <td>0.5</td> <td>8.47</td> <td>266</td> <td>0.15</td> <td>2.42</td> <td>1.66</td> </tr> </tbody> </table> 	Hole ID	Sample ID	From m	To m	Interval m	Au g/t	Ag g/t	Cu %	Pb %	Zn %	BADD001	M662913	89.1	89.6	0.5	17.2	494	0.14	2.17	1.15	BADD001	M662914	89.6	90.1	0.5	8.47	266	0.15	2.42	1.66
Hole ID	Sample ID	From m	To m	Interval m	Au g/t	Ag g/t	Cu %	Pb %	Zn %																							
BADD001	M662913	89.1	89.6	0.5	17.2	494	0.14	2.17	1.15																							
BADD001	M662914	89.6	90.1	0.5	8.47	266	0.15	2.42	1.66																							
Diagrams	<ul style="list-style-type: none"> Appropriate maps and sections (with scales) and tabulations of intercepts should be included for any significant discovery being reported These should include, but not be limited to a plan view of drill hole collar locations and appropriate sectional views. 	<ul style="list-style-type: none"> The location and results received for both rock chip and drill-core samples are displayed in the attached maps and/or tables. Coordinates are UTM Zone 34N. 																														
Balanced reporting	<ul style="list-style-type: none"> Where comprehensive reporting of all Exploration Results is not practicable, representative reporting of both low and high grades and/or widths should be practiced to avoid misleading reporting of Exploration Results. 	<ul style="list-style-type: none"> Results for all mineralised samples collected in this program are displayed on the attached maps and/or tables. 																														
Other substantive exploration data	<ul style="list-style-type: none"> Other exploration data, if meaningful and material, should be reported including (but not limited to): geological observations; geophysical survey results; geochemical survey results; bulk samples – size and method of treatment; metallurgical test results; bulk density, groundwater, geotechnical and rock characteristics; potential deleterious or contaminating substances. 	<ul style="list-style-type: none"> No metallurgical or bulk density tests were conducted at the project by Prospech. 																														
Further work	<ul style="list-style-type: none"> The nature and scale of planned further work (eg tests for lateral extensions or depth extensions or large-scale step-out drilling). Diagrams clearly highlighting the areas of possible extensions, including the main geological interpretations and future drilling areas, provided this information is not commercially sensitive. 	<ul style="list-style-type: none"> Prospech is in the processing of submitting samples of the remaining drill core for analysis. Depending of the results, further drilling may be carried out at Bauch 																														