



12 Margaretta Street  
East Bentleigh 3165  
Tel: 03 9563 8139



This office is located on the land of the Boonerwung people of the Kulin nation.

### IMPORTANT DATES

#### FEBRUARY

Monday 13th— Friday 17th

SSG Meetings

Thursday 23rd

School Council Finance Meeting  
5.45pm

School Council Meeting  
7pm

#### MARCH

Sunday 12th

Moorabbin Airport Family Day

Monday 13th

Labour Day Holiday

Tuesday 21st

Harmony Day

Thursday 23rd

School Council Finance Meeting  
5.45pm

School Council AGM 7pm

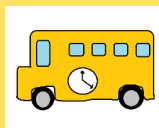
Friday 31st

Last Day Term 1

#### APRIL

Tuesday 18th

First Day Term 2



### Bus Transport

A reminder to parents of students who catch the bus. Please contact Crown Coaches if your child will not be at pickup or dropoff for any reason.

**9845 1455**

# What's News

TERM 1 ISSUE 1 WEDNESDAY 1ST FEBRUARY 2017



## Principal's Report

### Welcome and Happy New Year

Welcome to all students and families to the 2017 school year, and in particular, to those who are new to the school. We also welcome the nineteen new staff including Nat Proctor, School Leader for Upper Primary School.

I am sure many parents are extremely happy to see their children return to the routine of school after the seemingly long summer break. Hopefully, parents can enjoy some much deserved downtime to recharge.

We commence the year with over 110 staff and nearly 215 students including those attending our Early Education Program. With four new classrooms, there are now twenty four classrooms that equate in size to a primary school of nearly 1000 students. Classes continue to vary from four to eight students depending on student needs and classroom capacity.

### Major Facility Improvements

What a difference has been made to our school with approximately \$700,000 of school funded renovations plus the four new classrooms for the secondary students. Renovations have included two new offices for school leaders, major changes to the gym to create three multi-purpose fully air conditioned spaces, playground up-grades and three new outdoor learning spaces (OLS) off classrooms plus patio roofing to six OLS. The photographs in this newsletter highlight some of the exciting renovations and new facilities. Congratulations to our Maintenance Officer, Brad Redmond, who managed much of the demanding renovation process. With flooding of the Administration building adding to the workload, it has been an extremely challenging schedule of works to be completed on time.

We are continuing to consult closely with the South Eastern Education Region for a long term facility plan to accommodate the major enrolment growth by 2020. In addition to more classrooms SAS requires new professional offices, staff study and resource spaces, shared community health services, and multi-purpose spaces for students. Achieving new quality facilities will underpin the schools future as a centre of expertise.

### Annual Family Airport Day

Once again, our incredible friend Les Coleman has organized the unique joy flights for students and family at Moorabbin Airport. This major family event will be held on Sunday 12 March so please put this in your family calendar. More details will be included in our Week 3 newsletter.

*Jeff Innes*

### Online Resources

Check our SAS website for further information for programs and events at:

[www.southernautistic.vic.edu.au](http://www.southernautistic.vic.edu.au)

**Photos of building works to date**



Photo removed for privacy reasons

Photo removed for privacy reasons

Photo removed for privacy reasons

Photo removed for privacy reasons



Photo removed for privacy reasons

**New Staff 2017—A big welcome to new faces at SAS**



Sammi Babbage  
Education Support



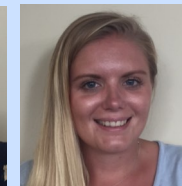
Lara Bosi  
Education Support



Liam Corkill  
Education Support



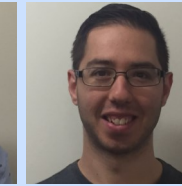
Marisol Faundez  
Education Support



Grace Gibbons  
Education Support



Collette Hunt  
Teacher



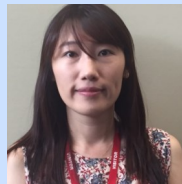
Daniel Koutsoumbos  
Education Support



Halle Ladd  
Teacher



Dylan Leigh  
Education Support



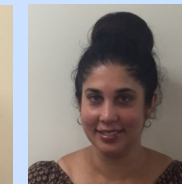
Sue Moon  
Education Support



Yvonne Mooyman  
Education Support



Rachel O'Connor  
Education Support



Tennille Patternott  
Teacher



Nicole Penrose  
Teacher



Nat Proctor  
Upper Primary School  
Leader



Paisley Rogers  
Education Support



Annalise Smith  
Speech Therapist



Robyn Tan  
Teacher



Belinda Welburn  
Teacher