

# Ice Cube Prisms

Approximately 96"x96"

To make the quilt pictured:



## You need:

- About 4-5 yards of various scraps for the 2" squares. (You need to make 41 blocks laid out in an 8x8 grid or 2624 2" squares.)
- 3 1/8 yards dark red for sashing and cornerstones
- 2 yards brown for sashing and cornerstones
- 1 3/4 off white/cream for sashing
- 1/2-5/8 yard of fabric for the binding.

## Cut:

**For the blocks :** (Make 41 blocks)

- From your various scraps:  
64 - 2" squares for each 8x8 block – total of 2624 squares for 64 blocks OR use strip piecing.  
(I used strip piecing to make these blocks. See explanation below.)

**For sashing sets:** (Make 64)

- From red :  
128 – 1½" x 12½" strips
- From brown:
- 64 – 1½" x 12½" strips
- From off white:
- 128 – 1½" x 12½" strips

**For cornerstones:** (Make 36)

From brown:

Cut 19 - 1½"xWOF pieces for making the pieces needed.

From red:

Cut 21 - 1½"xWOF pieces for making the pieces needed.

**Construct blocks:** *This quilt is one block (plus sashings/cornerstones blocks.) This block will finish at 12½" until it is sewn into the quilt.*

**Main block:**



8x8 block.

1. You can either just sew 2" squares together to make a 64 patch block like this:  
or  
strip piece:

- I strip pieced this using various colors of strips that I already had cut.  
Strip piecing: I sew 8 strips together like this from my already cut up 2" strips: (of course they aren't that even on the ends!)



Then, I press seams all in one direction. Then, I cut off 2" segments like this:



Now you have strips of 8 squares together that looks like this:



Do this a multitude of times with a variety of different color combinations to get 8 strips like this for each block you need. Sew those strips together until you have an 8x8 block.

Make 41 blocks.

**How to make the sashing blocks:**

Using your previously cut 1½" x 12½" strips, sew together cream, red, brown, red, and cream together to make a block that is 5½" x 12½".

Use this diagram:



Press the red towards itself.  
Make 64.

**How to make the cornerstone blocks:**

Using strips previously cut 1½" x WOF.

Make 5 strip sets like this:

Red, brown, red, brown, red:



Press the red towards itself.  
Cut off 1 ½" segments.

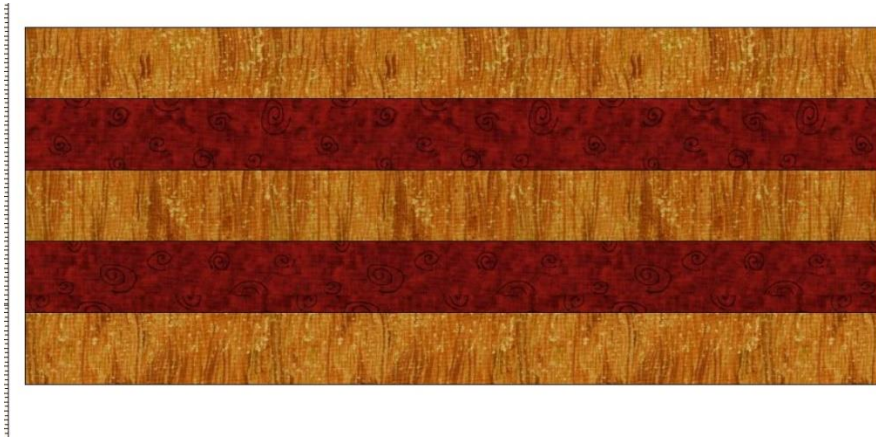


You will 108 of these segments.

AND

Make 3 strip sets with this color placement:

Brown, red, brown, red, brown



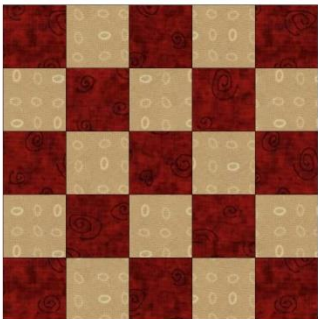
Press the red towards itself.

Cut off 1 1/2" segments.



You will need 72 such segments.

Now sew together those segments --as a 25 patch, until it looks like this:

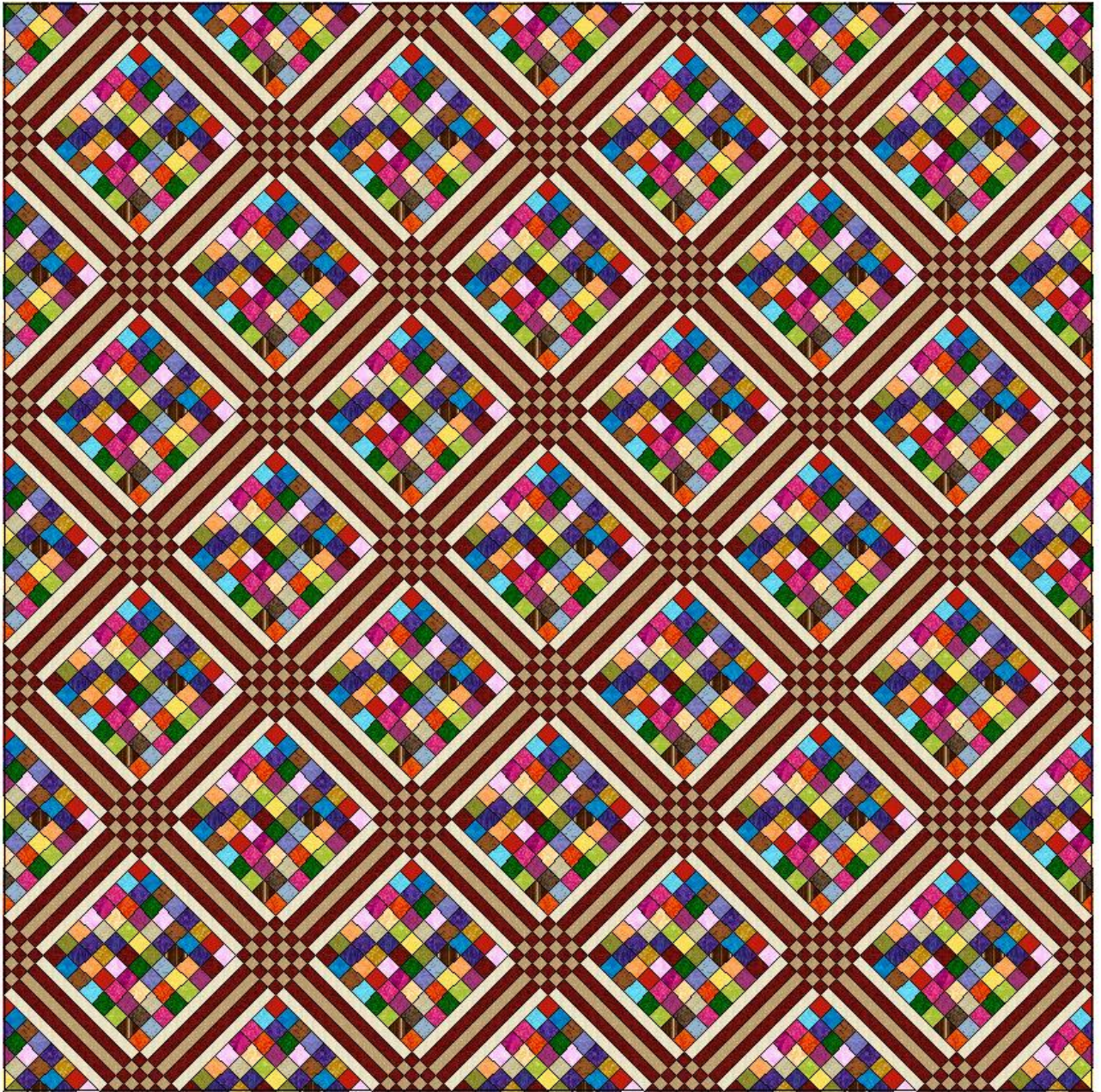


Make 36.

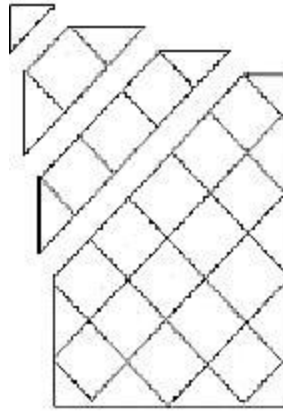
### How to put together this quilt:

1. **Construct your blocks as described above.**
2. **Get your sashing strips, cornerstones and blocks ready to lay out as follows.**

The layout of the quilt looks like this:



3. **Sew together in rows.** I usually first sew the rows together and then sew a row of sashing to the finished row. Continue until all the whole quilt is put together. Add the corners last. Here is a line drawing. I leave the blocks whole so that the edges will not be even like this diagram. Look at my photo below this diagram.



*Close up of my top before I trimmed it.*

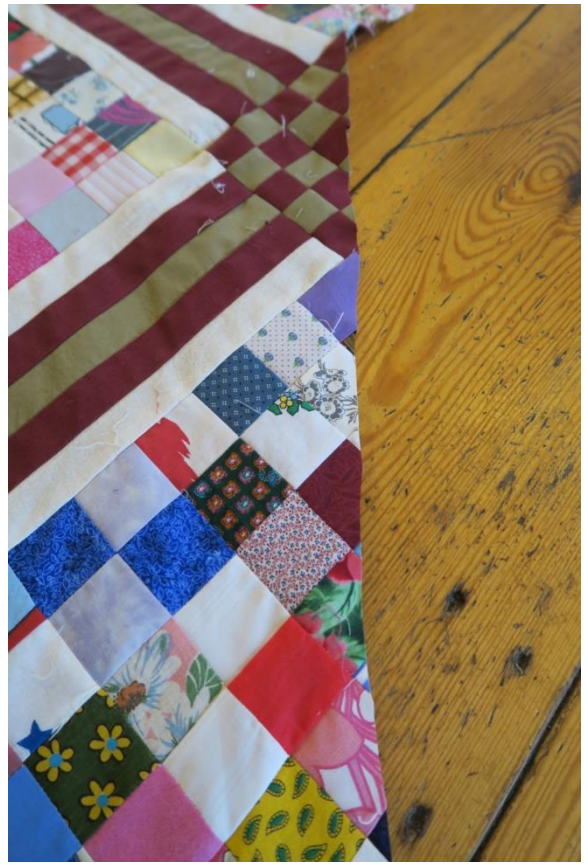


*After sewing the whole top together as above, you need to trim the sides. I used the blocks to mark the place where I needed to trim. Trim to  $\frac{1}{4}$ " to the OUTSIDE of the center of the block.*



Becky Tillman Petersen









*I threw the extra cut off pieces into my crumb/strings bag.*

4. **Press well.**
5. **Sandwich**, using whatever type of batting and backing you prefer.
6. **Quilt** as desired. I did an all over loop de loop:



7. **Bind**, using whatever method you wish.

**Congratulations! Your quilt is finished!**

**Enjoy!**

© 2017 Becky Tillman Petersen

\*WOF = Width of fabric